

Harsco Metals Group Ltd.
Bradmarsh Business Park,
The Point,
Bradmarsh Way
Rotherham
South Yorkshire,
S60 1BW

Tel: +44 (0)7788 754381
Email: jvernon@harsco.com

16th January 2019

Dear Sir/Madam

RE: Proposed Planning Application – Construction of an Asphalt Plant at Celsa Steel Works, 82 Seawall Road, Cardiff, CF24 5TH

In accordance with The Town and Country Planning (Environmental Impact Assessment) (Wales) Regulations 2017 Harsco would like to request a Screening Opinion to determine whether the proposed planning application will require an Environmental Impact Assessment (EIA) and subsequent Environmental Statement as part of the application. Should an EIA be deemed necessary we would also like to request a Scoping Opinion.

Harsco will construct and operate the plant on behalf of Celsa Steel at Celsa Steel Works, 82 Seawall Road, Cardiff, CF24 5TH

The location of the proposed plant is annotated on Appendix 1 included with this letter. A copy of the plant plan is also included as Appendix 2. **Please note that this planning application does not include the Interim Aggregate Production Area which is also detailed on the plan.**

The area covered by the proposed asphalt plant is estimated to cover 10,022m².

The asphalt plant has the capacity to produce 250 tonnes per hour of asphalt materials. The process uses slag (a waste generated on site by Celsa's production process) which has been crushed and screened to remove the metallic fraction leaving a quality aggregate. The arising slag aggregate will be fed into the asphalt plant with the addition of bitumen, Road Asphalt Planning's, cellulose, fibres and filler in varying proportions to produce different specifications of asphalt.

Materials are dried using a rotary drier prior to being fed into internal storage hoppers within the plant. Process steam and particulates generated from the drying process pass through a dust extraction system and are then discharged via a chimney stack. The plant is enclosed, and any dust generated is collected via a bag filter unit. The dust extraction system includes a pre-skimmer and interconnecting pipework to the rotary drier screen, mixer, elevator and filler silo. The bag filter unit incorporates a collecting hopper to store the collected dust which is used in the asphalt mix. A Continuous Emissions Monitor will be installed, and the plant specification is designed to achieve particulate emissions of less than 25mg/m³.

The asphalt is produced in accordance with the Slag Quality Protocol to a required specification enabling it to achieve 'end of waste status'.

The process enables the recovery of slag from the steel making process thus reducing reliance on disposal to landfill. By recovering waste materials, the need to source virgin materials is also reduced.

It is intended that Harsco will operate this plant under Celsa's environmental permit.

Harsco operate a similar plant at Steelphalt in Rotherham, South Yorkshire:

<http://www.steelphalt.com/>



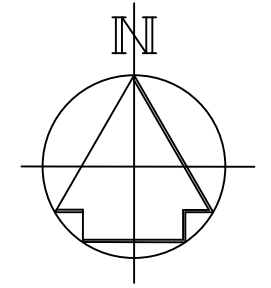
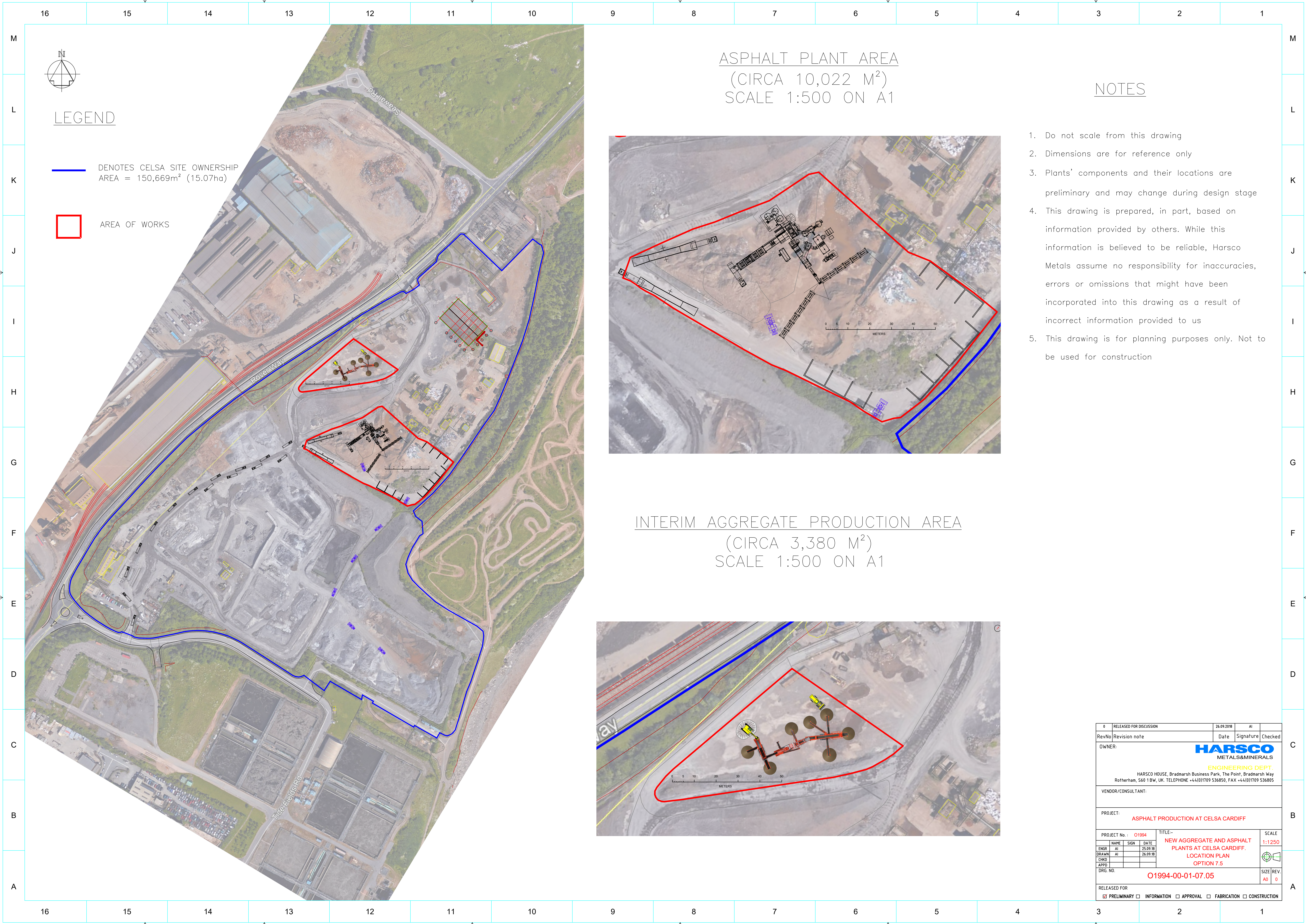
Similar Asphalt Plant at Steelphalt Rotherham, South Yorkshire

Should you require any further information please do not hesitate to contact me.

Yours sincerely,
Jeanette Vernon
(*Environmental Compliance*)

Location of proposed development (Asphalt Plant) by Harsco at Celsa Cardiff





LEGEND

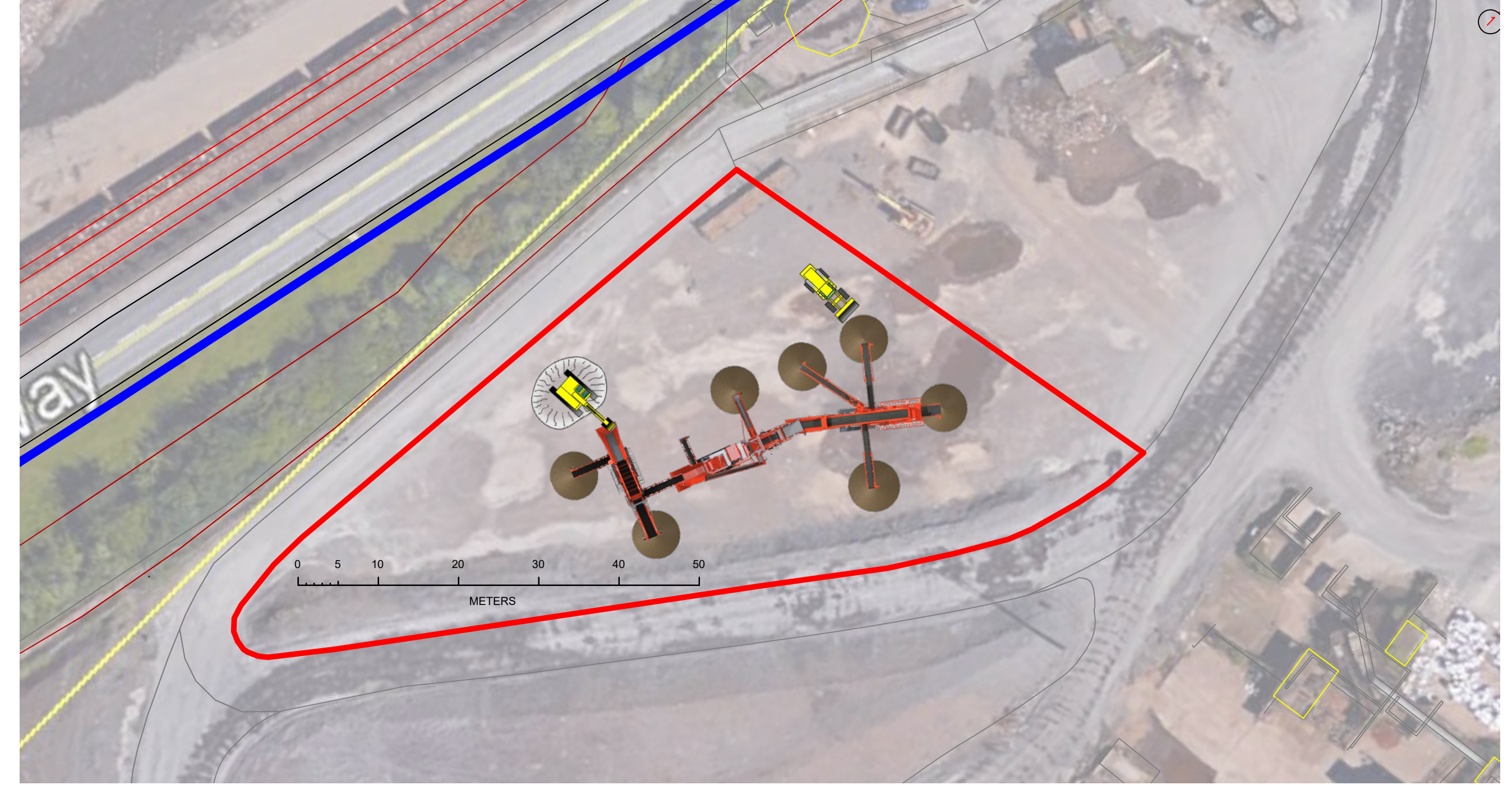
DENOTES CELSA SITE OWNERSHIP
AREA = 150,669m² (15.07ha)

AREA OF WORKS

ASPHALT PLANT AREA
(CIRCA 10,022 M²)
SCALE 1:500 ON A1



INTERIM AGGREGATE PRODUCTION AREA
(CIRCA 3,380 M²)
SCALE 1:500 ON A1



NOTES

1. Do not scale from this drawing
2. Dimensions are for reference only
3. Plants' components and their locations are preliminary and may change during design stage
4. This drawing is prepared, in part, based on information provided by others. While this information is believed to be reliable, Harsco Metals assume no responsibility for inaccuracies, errors or omissions that might have been incorporated into this drawing as a result of incorrect information provided to us
5. This drawing is for planning purposes only. Not to be used for construction

0	RELEASED FOR DISCUSSION	26.09.2018	AI	
RevNo	Revision note	Date	Signature	Checked
OWNER:		<div>HARSCO</div> <div>METALS&MINERALS</div> <div>ENGINEERING DEPT.</div> <div>HARSCO HOUSE, Bradmarsh Business Park, The Point, Bradmarsh Way Rotherham, S60 1BW, UK. TELEPHONE +44(0)1709 536850, FAX +44(0)1709 536805</div>		
VENDOR/CONSULTANT:				
PROJECT:				
ASPHALT PRODUCTION AT CELSA CARDIFF				
PROJECT No.: O1994		TITLE:-		SCALE
NAME		SIGN	DATE	1:1250
ENGR	AI		25.09.18	
DRAWN	AI		26.09.18	
CHKD				
APPD				
DRG. NO.		O1994-00-01-07.05		SIZE REV
				A0 0
RELEASED FOR				
<input checked="" type="checkbox"/> PRELIMINARY <input type="checkbox"/> INFORMATION <input type="checkbox"/> APPROVAL <input type="checkbox"/> FABRICATION <input type="checkbox"/> CONSTRUCTION				