

1. WELCOME

Carter Jonas

ASPHALT PLANT, CARDIFF

INTRODUCTION

Harsco Metals & Minerals welcome you to this public consultation event on their proposals for an Asphalt Plant on the existing Celsa Steel site at Rover Way, Cardiff.

Thank you for taking the time to attend our consultation event.

We are in the process of preparing a Full Planning Application which will be accompanied by an Environmental Statement and this is to be formally submitted to Cardiff Council in the coming weeks.

This public consultation provides information about our proposals for the site and an opportunity for interested parties to comment on them. We would appreciate it if you could take the time to complete one of our comments forms.

The proposals involve the erection of an asphalt plant to recycle steel slag which is a bi-product of the steel making process. SteelPhalt has been developing and manufacturing high performance asphalt products for the UK roadmaking industry since the 1960's. The proposed asphalt plant site is ideally located to source slag cost-effectively from Celsa steel works - a sustainable way of making asphalt since at least 95% of the product is recycled.



SITE LOCATION PLAN



WHO IS HARSCO

Harsco is a diversified, worldwide company serving industries that are fundamental to worldwide economic progress. We have been in business since 1853 and have 170 operating site in 35 countries and employ more than 12,000 people.

Our core markets include:

- Steel and metal producers;
- Railways; and
- Energy.

Harsco is unmatched in its ability to globally harness and share its comprehensive insight, expertise and talent, bringing them into focused action onsite for the unparalleled complete edge of our clients.

Our beliefs:

- We believe working together builds success
- We believe that human life is priceless
- We believe in always keeping our promises
- We believe integrity is absolute

Metals & Minerals

- World's largest contract services partner to the steel and metals industries
- Onsite material handling services for the raw materials and co-products of production
- Recovery of industrial minerals for environmentally beneficial commercial use
- Major relationships with the world's leading producers
- Industry-leading innovation and safety
- 170 locations, 35 countries

SITE IMAGES

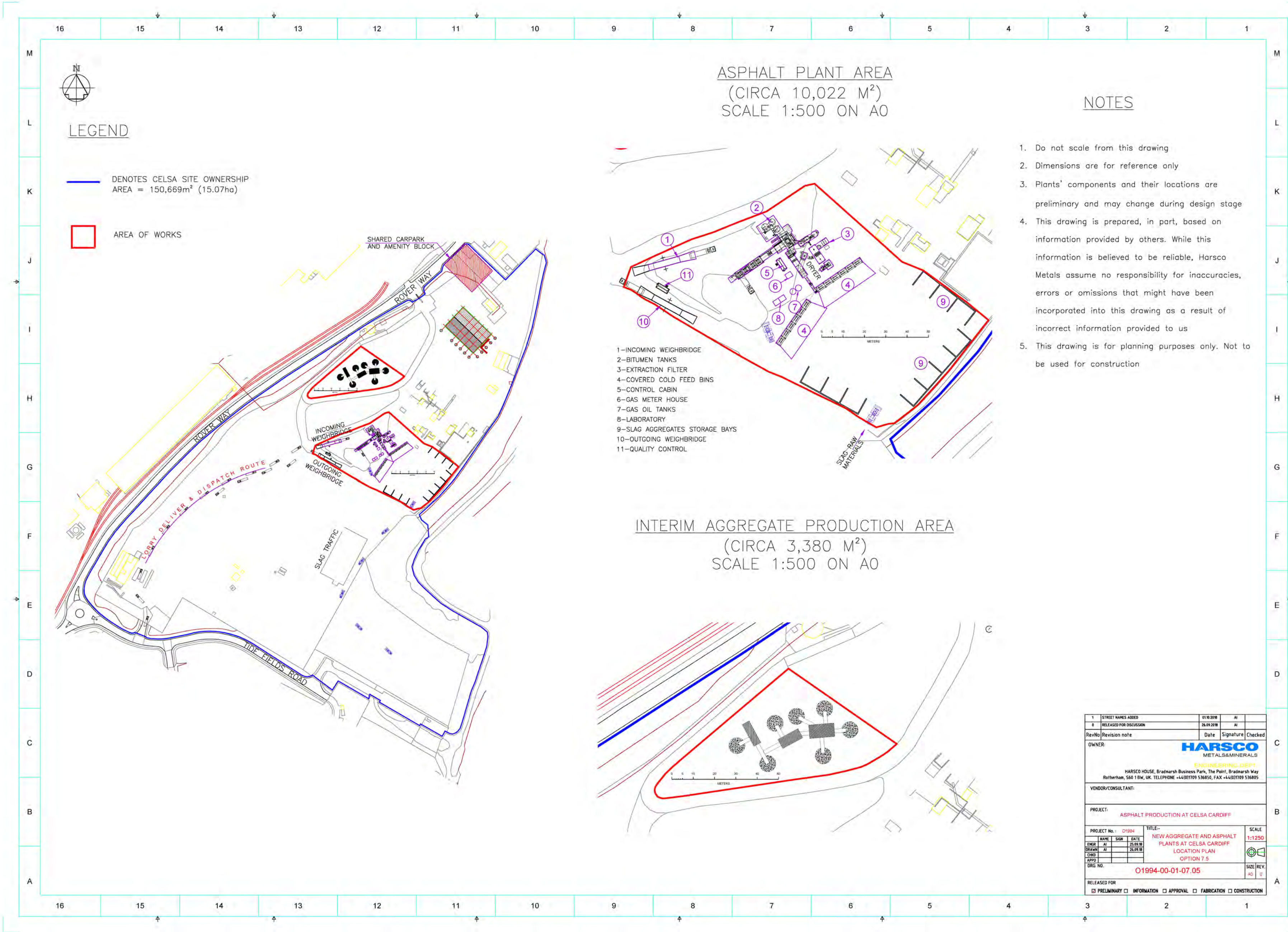


2. The Proposals

Carter Jonas

ASPHALT PLANT, CARDIFF

Proposed Site Plan Layout



3. NEXT STEPS

Carter Jonas

ASPHALT PLANT, CARDIFF

Existing Plant at Rotherham



Proposed Plant to be installed on site



Indicative Programme

- Application Submission May 2019
- Decision notice issued August 2019
- Installation of Plant 4-6 Weeks
- Asphalt Plant operational Autumn 2019

We welcome your comments and suggestions and ask that you provide us with feedback either by completing a comments form today or by submitting your comments by email to:

Peter.mckeown@carterjonas.co.uk

4. Environmental Matters

Carter Jonas

ASPHALT PLANT, CARDIFF

Environmental Impacts & Controls

AIR



Controls

- Stack fitted with a bag filter system to collect particles - preventing emission to atmosphere
- Emission limits tightly controlled by environmental permit
- Continuous (24/7) emissions monitoring (proactive not reactive)
- Only process steam is emitted

DUST



Controls

- Purpose built storage bays
- Dampening down of stockpiles
- Dust suppression sprays/cannons
- Road sweepers/water bowzers
- Restrict vehicle speed
- Minimise load drop-height
- Enclosed conveyors
- Plant clad with sheeting
- Visual monitoring and checks
- Restrict/stop activities in strong winds

TRAFFIC



Controls

- Limited increase in the number of vehicle movements (slag processed on site instead of being sent off-site for recovery/disposal)
- Designated on-site vehicle waiting area to avoid queuing on highway
- Carefully scheduled / timed deliveries & collections to minimise congestion

NOISE



Controls

- Restrict operating hours (to between 06:00 – 16:00 hours)
- Restrict vehicle speed
- Minimise load drop-height
- Plant clad with sheeting
- Regular Maintenance & pre-start checks for all plant and machinery

Environmental Benefits

95%
Recycled
Material



Reduce
waste to
landfill



Reduce
use of raw
materials



Reduce Carbon
Footprint



Slag can be processed on site instead of being transported to South Yorkshire

Minimise
Contribution to
Climate Change



Community Projects – Giving something back!

New car park for Rotherham Hospice



Located on a busy main road with double yellow lines parking was an issue for visitors to the hospice.

Harsco teamed up with customers and suppliers. Together they created a new car park for the hospice

Restoration of Wentworth Woodhouse Driveway



Harsco teamed up with Total and Rotherham Council's Highway Delivery Service to resurface the driveway of this locally important stately home

Benefits

- Benefits are both direct and in-direct employment opportunities, estimate around 40-50 which includes plant operating personnel, site admin, HGV driver etc
- Recycles all slag waste generated from the steelworks and converts into high performing asphalt products.
- Reduces the need to quarry natural aggregates.
- SteelPhalt are proud to work closely with the local community to deliver CSR projects, see attached some examples previously delivered.



- Local children had no recreational facility.
- Local community trust appealed for support to local business community to unlock funding from Sport England.



£1000 donated to Thorpe Hesley Primary School – books for schools project



- SteelPhalt coordinated a combined effort to deliver the project effecting £300k



Swinton Brookfield Academy – Hi-vis vests and road / site safety visit

HARSCO
METALS & MINERALS