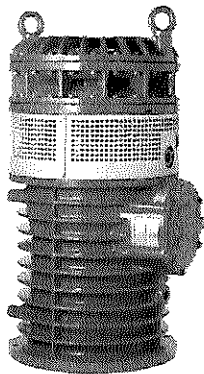


BS 2400 HT 3~ 243

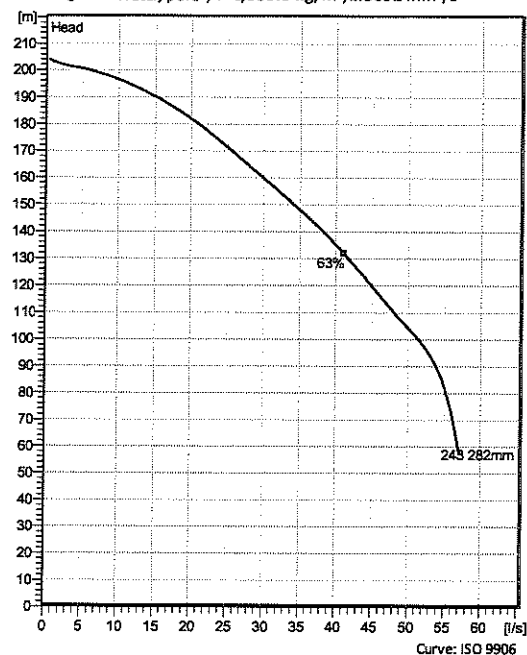
Portable pumps ideal for applications in which the water or liquid contains concentrations of abrasives.



Technical specification



Curves according to: Water, pure, 4 °C, 999.9 kg/m³, 1.5692 mm²/s



Configuration

| | |
|--|---|
| Motor number B2400.402 42-26-2FF-W 90KW | Installation type S - Portable Semi permanent, Wet |
| Impeller diameter 282 mm | Discharge diameter 100 mm |

Pump information

| |
|--|
| Impeller diameter 282 mm |
| Discharge diameter 100 mm |
| Inlet diameter |
| Maximum operating speed 2955 rpm |
| Number of blades 3 |
| Max. fluid temperature 40 °C |

Materials

| |
|--|
| Impeller Hard-Iron |
| Stator housing material Grey cast iron |

Project
Block

Created by Paul Jenkins
Created on 10/18/2021 **Last update** 10/18/2021

BS 2400 HT 3~ 243

Technical specification



Motor - General

| | | | |
|--|-------------------------------|--------------------------------|-----------------------------|
| Motor number B2400.402 42-26-2FF-W 90KW | Phases 3~ | Rated speed 2955 rpm | Rated power 90 kW |
| Approval No | Number of poles 2 | Rated current 146 A | Stator variant 44 |
| Frequency 50 Hz | Rated voltage 400 V | Insulation class H | Type of Duty S1 |
| Version code 402 | | | |

Motor - Technical

| | | | |
|--|--|--|-----------------------------------|
| Power factor - 1/1 Load 0.94 | Motor efficiency - 1/1 Load 94.0 % | Total moment of inertia 1.14 kg m ² | Starts per hour max. 30 |
| Power factor - 3/4 Load 0.93 | Motor efficiency - 3/4 Load 94.0 % | Starting current, direct starting 1040 A | |
| Power factor - 1/2 Load 0.88 | Motor efficiency - 1/2 Load 93.5 % | Starting current, star-delta 347 A | |

Project
Block

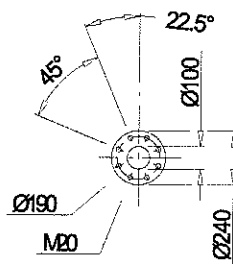
Created by
Created on

Paul Jenkins

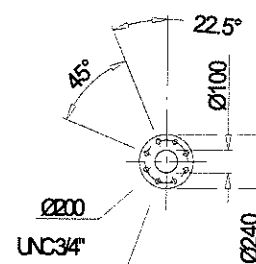
10/18/2021 **Last update** 10/18/2021

BS 2400 HT 3~ 243

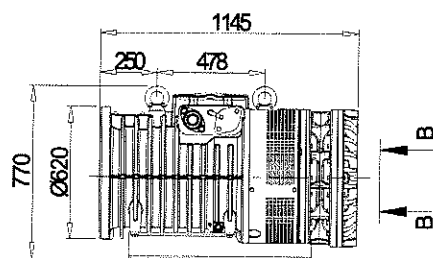
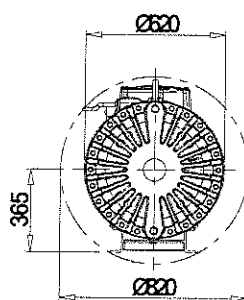
Dimensional drawing



ALT1 B-B



ALT2 B-B



SCREEN OPENING 10x10

| BS | Weight (kg) |
|----------|-------------|
| 2400.390 | 1015 |
| 2400.402 | 985 |
| 2400.490 | 985 |

| | | | | | | | | |
|--|-------------|------|----|------------|-------------------------------------|-------------------|---------------------------|------------------|
| | BS | 2400 | HT | Horizontal | Discharge pilot pump pilot | Dis 100 DN 100 | Scale 1:20 | Date 18/09/21 |
| | 390,402,490 | | | | Pump inlet | | Drawing number 6159600 | Revision 3 |

Project

Block

Created by

Paul Jenkins

Created on

10/18/2021 Last update 10/18/2021