

SECTION DRAWING - HIGHLIGHTING PROPOSAL #1



IMAGE HIGHLIGHTING OVERFLOW CULVERTS, UPSTREAM ELEVATION AND LOCATION FOR UPSTREAM FRAME DAM

- NOTES:
- FOLLOWING THE SITE COMPOUND SET UP, OPERATIVES WILL PROCEED TO INSTALL THE FRAME DAM SYSTEMS TO BOTH UPSTREAM AND DOWNSTREAM.
  - OPERATIVES WILL ALSO INSTALL ACCESS POINTS TO THE DOWNSTREAM.
  - THE CRANE WILL THEN PROCEED TO INSTALL THE PUMPS. THE DISCHARGE HOSES WILL BE BUILT AND THEN PLACED THROUGH THE DISCHARGE CULVERTS.
  - FOLLOWING THE INSTALLATION OF THE DISCHARGE HOSES OPERATIVES WILL THEN PROCEED TO INSTALL THE SCOUR PROTECTION, ENSURING THAT NO BANK EROSION OCCURS AS A RESULT OF THE OVER PUMPING.
  - A SILT CURTAIN WILL THEN BE PLACED AROUND THE DOWNSTREAM FRAME DAM, MITIGATING POTENTIAL POLLUTION INCIDENTS.
  - THE WATER WITHIN THE CULVERT WILL THEN BE OVER PUMPED INTO THE WATER CONTAINED BY THE SILT CURTAIN.
  - ONCE THE CULVERT HAS BEEN DE-WATERED, ENGINEERS WILL ENTER THE CULVERT FROM THE DOWNSTREAM AND ASSESS THE DAMAGE.
  - IF ALL PARTIES ARE HAPPY TO PROCEED, OPERATIVES WILL THEN BEGIN TO REMOVE THE DEBRIS/INFILL MATERIAL.
  - THIS WILL BE ACHIEVED BY OPERATIVES UTILIZING WATER JETS. FROM A POSITION OF SAFETY (A SUFFICIENT DISTANCE UPSTREAM), OPERATIVES WILL EMULSIFY THE DEBRIS. THIS SPOIL WILL THEN NATURALLY MIGRATE DOWNSTREAM, WHERE IT WILL BE OVER PUMPED INTO THE AREA CONTAINED BY THE SILT CURTAIN.
  - AT THIS POINT, ONLY ENOUGH DEBRIS FOR THE INSTALLATION OF THE RAILS IS REQUIRED TO BE REMOVED.
  - THROUGHOUT THIS PROCESS THE SITE MANAGER WILL CONTINUALLY ASSESS THE CONDITION OF THE COLLAPSED SECTION.
  - IF AT ANY STAGE THE WORKS BECOME UNSAFE, OPERATIVES ARE TO LEAVE THE ASSET VIA THEIR CLOSEST EXIT I.E. VIA THE ACCESS DOWNSTREAM OR VIA THE MAN-RIDING BASKET UPSTREAM.



IMAGE HIGHLIGHTING OVERFLOW CULVERTS (DOWNSTREAM ALONG WITH LOCATION OF SCOUR PROTECTION

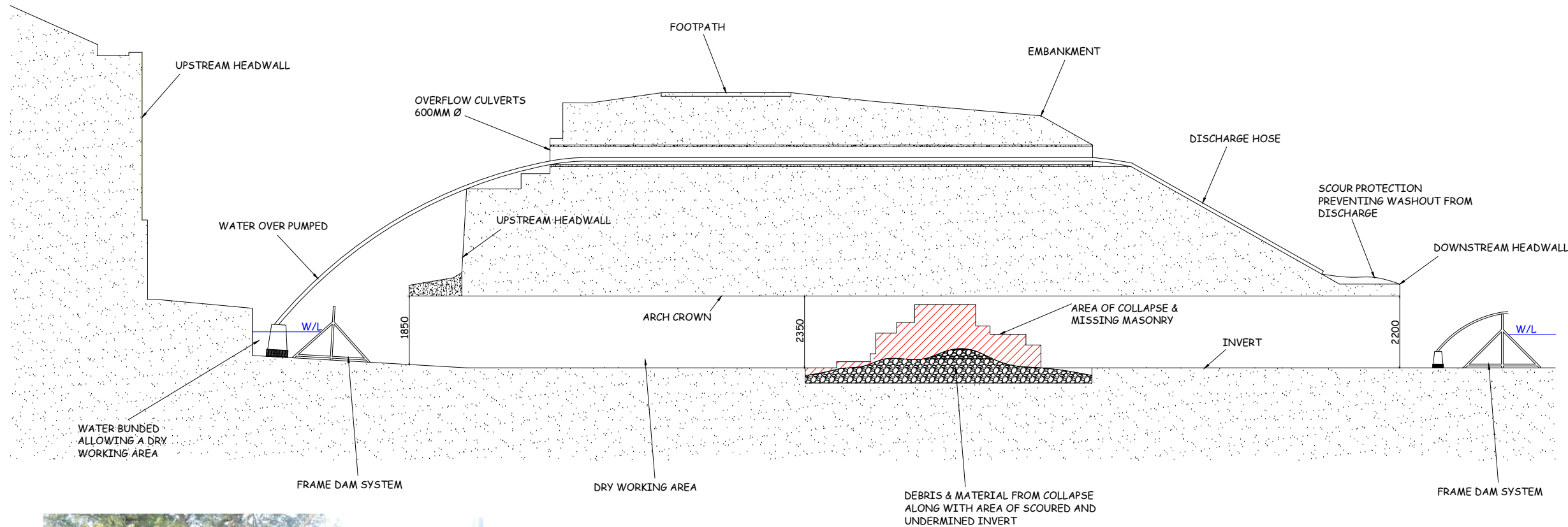
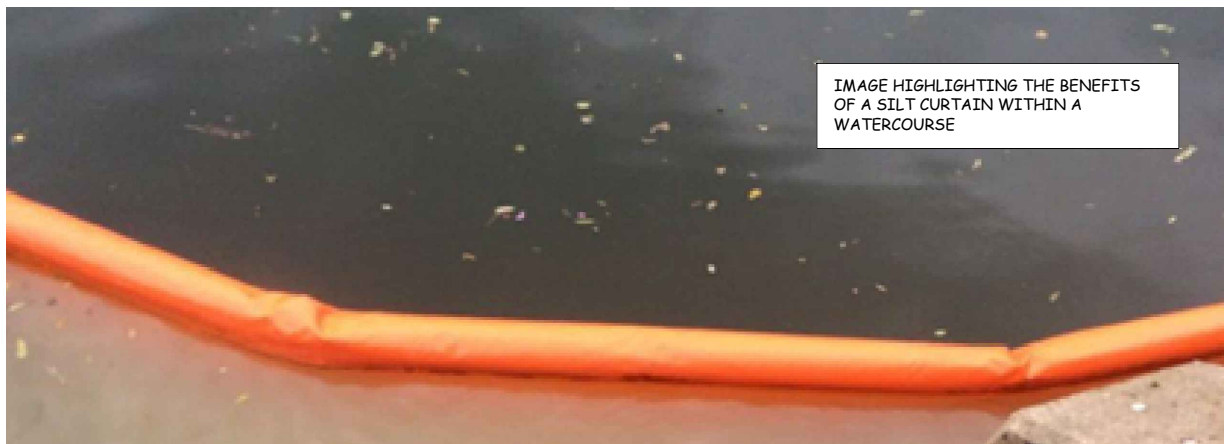


IMAGE HIGHLIGHTING TYPICAL EXAMPLE OF FRAME DAM SYSTEM



IMAGE HIGHLIGHTING THE BENEFITS OF A SILT CURTAIN WITHIN A WATERCOURSE



LEGEND:

NOTES:

--	--	--	--

Rev	Date	By	Rev Description
Drawing Status:			
FOR INFORMATION ONLY			

CLIENT:  
SWANSEA CITY COUNCIL

PROJECT REF:  
ECI - MORFA CULVERT

DRAWING TITLE:  
ECI - MORFA CULVERT

DRAWING NUMBER:  
NO. 1

ISSUE DATE:  
N/A

SCALE:  
NTS



Head Office & Accounts  
Osprey Business Park  
Byng Street, Landore,  
Swansea, SA1 2NR  
Tel: (01792) 301818  
Fax: (01792) 645698

Bristol Office  
St. Andrews House  
St. Andrews Road  
Avonmouth  
Bristol BS11 9DQ  
Tel: (01179) 382603