

REFERENCE DOCUMENTS

NUMBER	TITLE
1025H08SDN84002	OVERALL FACILITY SCHEMATIC
1025H08GRV09422	PIPELINE/CABLE ROUTE ENGINEERING GEOLOGICAL GROUND MODEL
1025H08GRV09420	PHASE 2C NEARSHORE ENGINEERING GEOLOGICAL GROUND MODEL

KEY PLAN

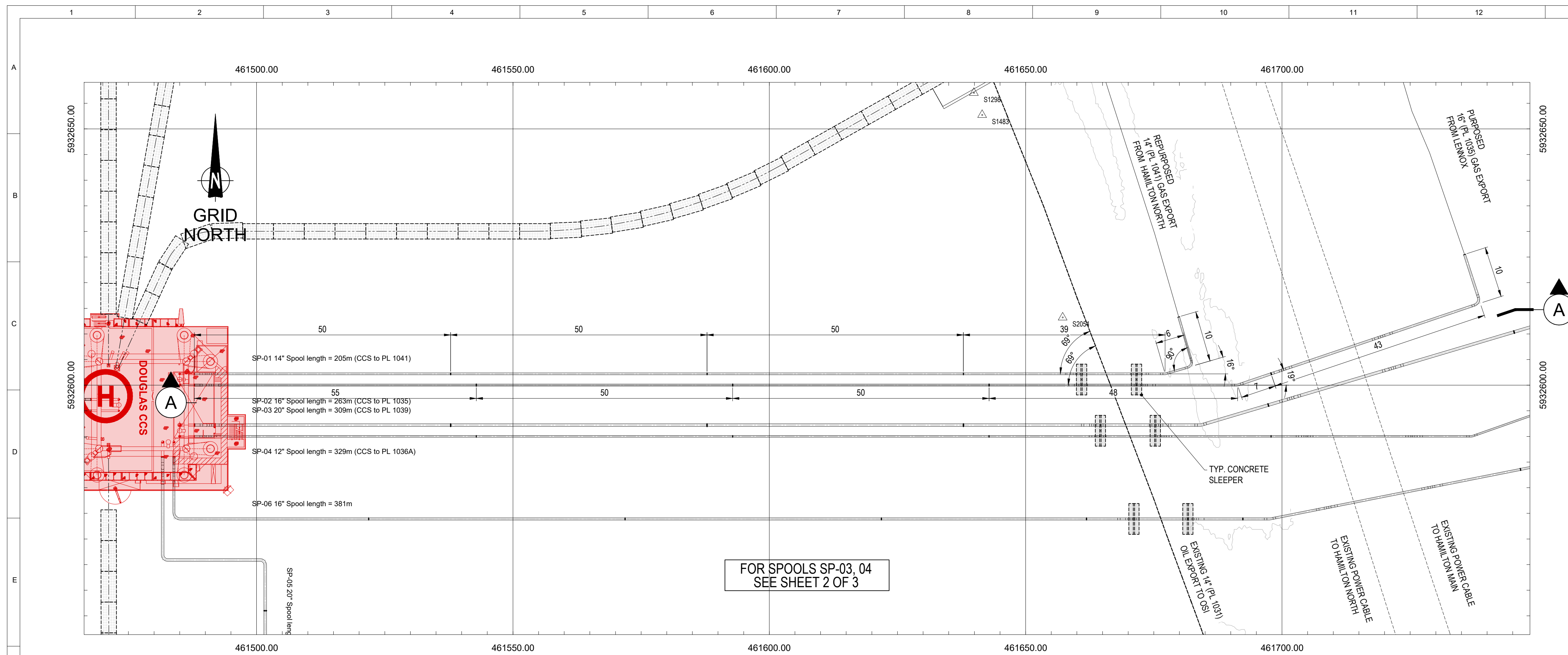
GENERAL NOTES

- ALL DIMENSIONS AND COORDINATES ARE IN METRES UNLESS NOTED OTHERWISE.
- GLOBAL COORDINATE REFERENCE SYSTEM: European Datum 1950 UTM Zone 30N (EPSG: 23030)
PROJECTED COORDINATE SYSTEM
PROJECTION
LINEAR UNIT
TRANSVERSE MERCATOR
METERS (1.0)
FALSE EASTING
500000.0
FALSE NORTHING
0.0
CENTRAL MERIDIAN
-3.0
SCALE FACTOR
0.9996
LATITUDE OF ORIGIN
0.0
- GEOGRAPHIC COORDINATE SYSTEM
European Datum 1950
ANGULAR UNIT
DEGREE (0.0174532925199433)
PRIME MERIDIAN
GREENWICH (0.0)
DATUM
European 1950
SPHEROID
International 1924
SEMI-MAJOR AXIS
6378388.0
SEMI-MINOR AXIS
6356911.946127946
INVERSE FLATTENING
297
- PIPELINE ROUTING IS PRELIMINARY AND SUBJECT TO CHANGE BASED ON SURVEY INFORMATION.
- WATER DEPTHS GIVEN FOR INFORMATION ONLY.
- LAYOUT IS COMPILED FROM VARIOUS SOURCES AND THEREFORE IS SUBJECT TO CONFIRMATION.
- PRELIMINARY ROUTING BASED ON EXISTING SEA-BED ARCHITECTURE AROUND EACH PLATFORM.
- DOUGLAS ACCOMMODATION AND WELLHEAD PLATFORMS TO BE IN-PLACE AT THE TIME OF THE INSTALLATION OF NEW PIPELINES AT THE DOUGLAS CCS PLATFORM.
- PIPELINE APPROACH TO EACH PLATFORM AND SPOOL DETAILS TO BE CONFIRMED.
- FIELD LAYOUT BASED ON THE PRELIMINARY LOCATION OF NEW RISERS AT EXISTING PLATFORMS (HAMILTON MAIN, HAMILTON NORTH, LENNOX AND DOUGLAS CCS PLATFORM).
- FINAL LOCATION OF RISERS AT EACH PLATFORM TO BE CONFIRMED.
- DRILLING JACK-UP CORRIDOR AND FOOTPRINT AROUND PLATFORMS TO BE CONFIRMED.
- FIELD LAYOUT TO BE REVIEWED AGAINST THE DECOMMISSIONING SCOPE FOR THE PROJECT.
- FOR OFFSHORE NEW PIPELINES FIELD LAYOUT, SEE DRAWING No. 1023DS8SDN84003.
- FOR OFFSHORE POWER CABLES & FIBRE OPTIC FIELD LAYOUT, SEE DRAWING No. 1025H08SDG84104.
- NUMBER AND TYPE OF PROTECTION AT TIE-IN LOCATION FOR REPURPOSED PIPELINES (SP01 TO SP05) TO BE CONFIRMED.
- SIZE OF TARGET BOX SHOWN IN DRAWING IS INDICATIVE ONLY, ACTUAL SIZE IS 6 x 3m REFER TO DOC. No. 23025 ENG-PLI-PRG DESIGN OF OFFSHORE PIPELINES.
- CONCRETE SLEEPER SUPPORTS TO BE COATED WITH NEOPRENE.
- THE CONTRACTOR NEEDS TO VERIFY THAT THE EXISTING CABLES TO HAMILTON NORTH AND HAMILTON MAIN FROM DOUGLAS PLATFORM WILL BE DECOMMISSIONED AND REMOVED PRIOR TO INSTALLING THE NEW SUBSEA CABLE. TO BE REVIEWED AGAINST THE DECOMMISSIONING SCOPE.

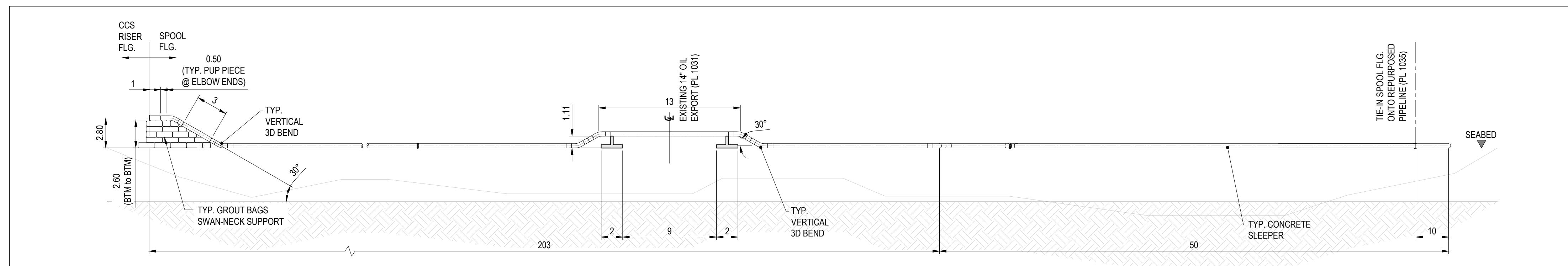
LEGEND


	FUTURE DENSE PHASE PIPELINE - DOUGLAS CCS TO HAMILTON NORTH.
	FUTURE DENSE PHASE PIPELINE - DOUGLAS CCS TO LENNOX.
	FUTURE DENSE PHASE PIPELINE - DOUGLAS CCS TO HAMILTON MAIN.
	NEW POWER CABLES.
	EXISTING PIPELINES / UMBILICALS / POWER CABLES.
	TIE-IN SPOOL TO RE-PURPOSED PIPELINE.
	CONCRETE MATTRESS PROTECTION (6 x 3 x 0.3m) U.N.O.
	JACK-UP RIG EXCLUSION ZONE.
	PROHIBITED ANCHORING EXCLUSION ZONE 200m RADII.
	ROCK DUMP EXTENTS OVER NEW PIPELINES (100m EXTENT), OVER REPURPOSED PIPELINE TIE-INS (50m EXTENT).

CD-FE	03	07.09.2023	RE-ISSUED FINAL	N.Z.	M.R.	S.G.	
CD-FE	02	18.08.2023	RE-ISSUED FOR COMMENT	N.Z.	M.R.	S.G.	
CD-FE	01	07.07.2023	ISSUED FINAL	N.Z.	M.R.	S.G.	
CD-FE	01	13.06.2023	ISSUED FOR COMMENT	N.Z.	M.R.	S.G.	
Validity	Rev.	Date	Description	Prepared	Checked	Approved	Eni UK
Revision Index							
Company logo and business name			Company Document ID	105600BSDN84152			
Facility and Sub Facility Name	DOUGLAS SUBSEA		Project Name	LBA CCS Transport and Storage		Scale	Sheet of Sheets
Document Title	OFFSHORE PIPELINES APPROACH DRAWING - DOUGLAS CCS PLATFORM		Scale	1:1000 @A1		1/3	
			Superseded by N.	Plant Area		Plant Unit	
			NA	NA		NA	



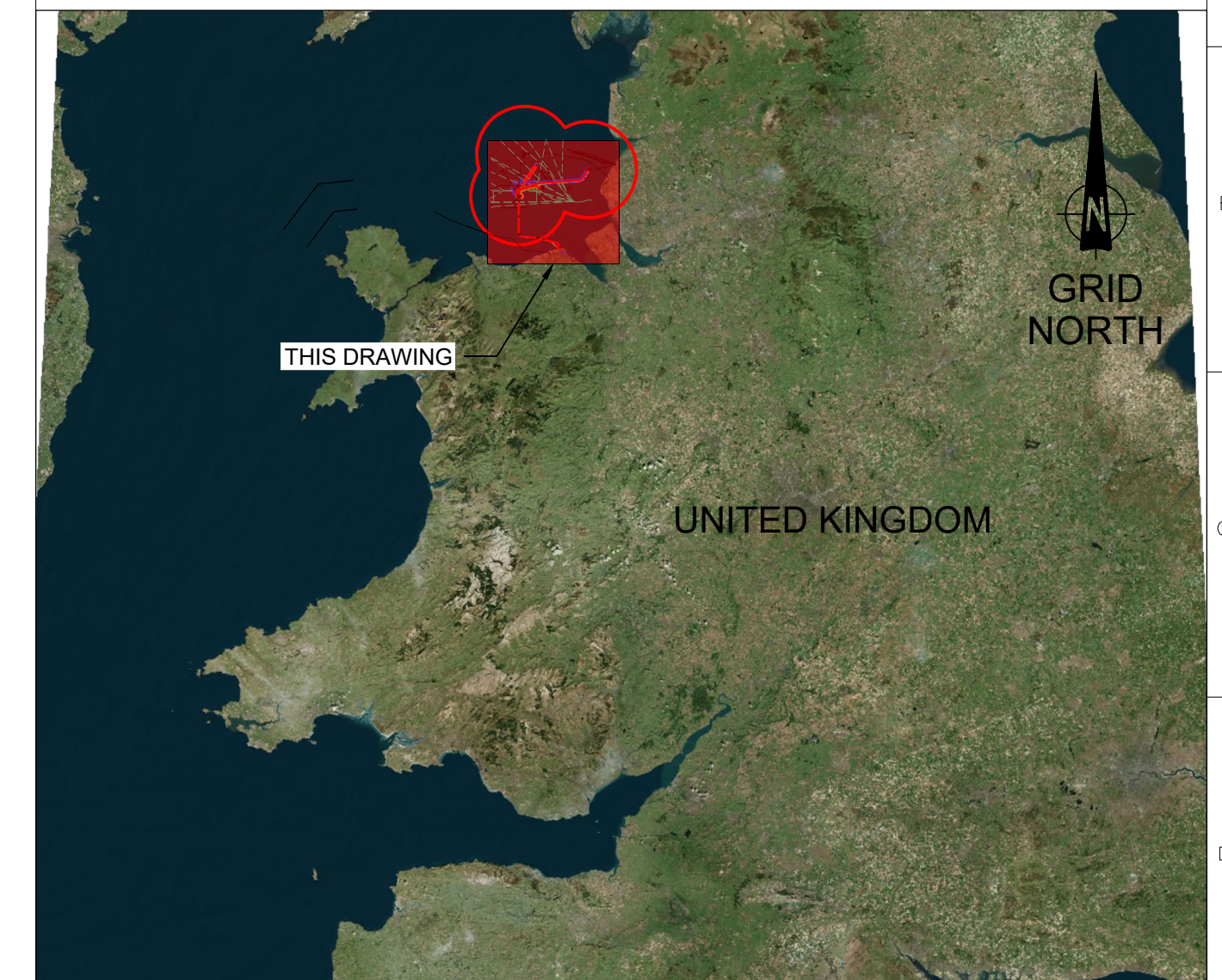
PLAN VIEW
SP- 01 & 02 (14" & 16" CROSSINGS)
SCALE 1:500
CONCRETE MATTRESSES ARE OMITTED FOR CLARITY



VIEW 
SCALE 1:250
TYPICAL SPOOL ELEVATION
SP-02 16" SPOOL

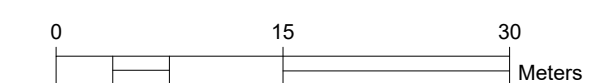
REFERENCE DOCUMENTS	
NUMBER	TITLE
1025H0BSDN84002	OVERALL FACILITY SCHEMATIC
1025H0BGRV09422	PIPELINE/CABLE ROUTE ENGINEERING GEOLOGICAL GROUND MODEL
1025H0BGRV09420	PHASE 2C NEARSHORE ENGINEERING GEOLOGICAL GROUND MODEL

KEY PLAN






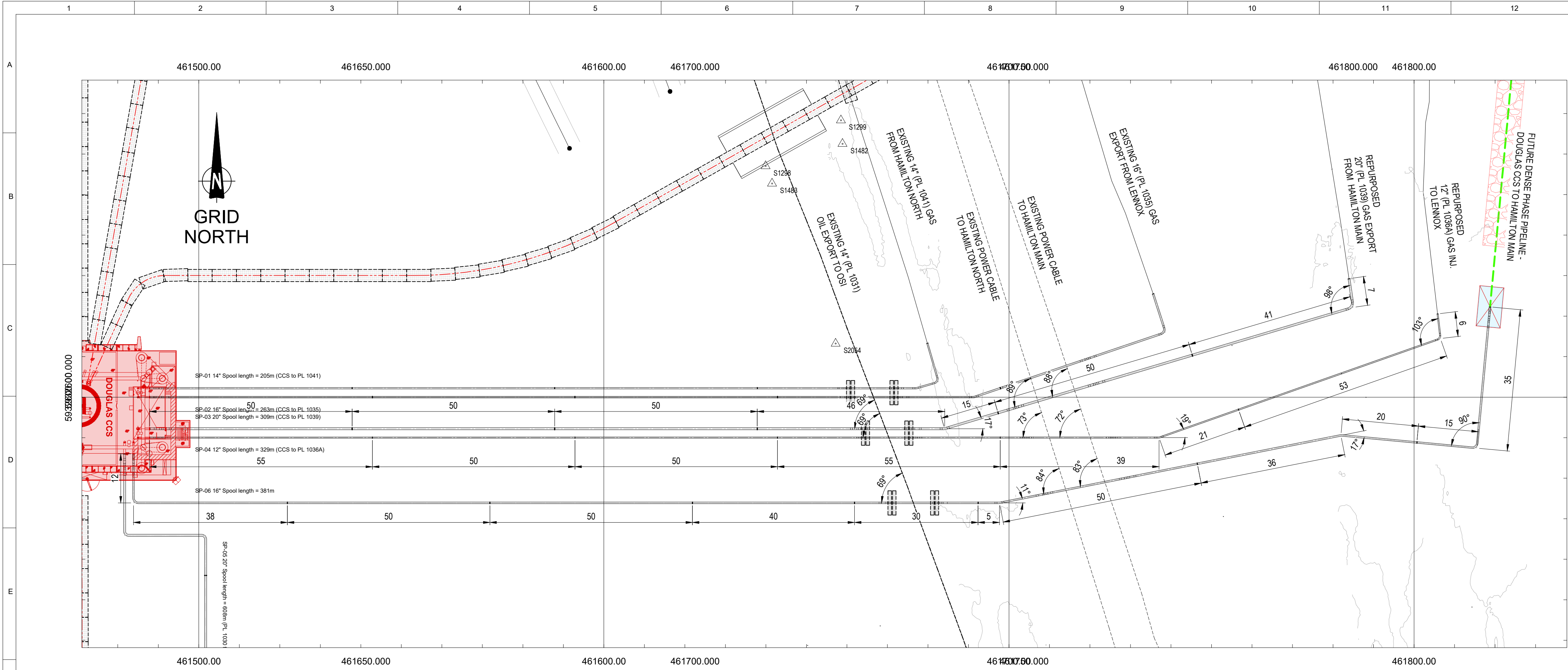
GENERAL NOTES

- | | | |
|----|--|----------------------------------|
| 1. | ALL DIMENSIONS AND COORDINATES ARE IN METRES UNLESS NOTED OTHERWISE. | |
| 2. | GLOBAL COORDINATE REFERENCE SYSTEM: European Datum 1950 UTM Zone 30N (EPSG: 23030) | |
| | PROJECTED COORDINATE SYSTEM | European Datum 1950 UTM Zone 30N |
| | PROJECTION | TRANSVERSE MERCATOR |
| | LINEAR UNIT | METERS (1.0) |
| | FALSE EASTING | 500000.0 |
| | FALSE NORTHING | 0.0 |
| | CENTRAL MERIDIAN | -3.0 |
| | SCALE FACTOR | 0.9996 |
| | LATITUDE OF ORIGIN | 0.0 |
| | GEOGRAPHIC COORDINATE SYSTEM | European Datum 1950 |
| | ANGULAR UNIT | DEGREE (0.0174532925199433) |
| | PRIME MERIDIAN | GREENWICH (0.0) |
| | DATUM | European 1950 |
| | SPHEROID | International 1924 |
| | SEMI-MAJOR AXIS | 6378388.0 |
| | SEMI-MINOR AXIS | 6356911.946127946 |
| | INVERSE FLATTENING | 297 |
| 3. | ALL SPOOL BENDS TO HAVE 500mm PUP PIECE WELDED AT BOTH ENDS OF ELBOW. | |
| 4. | ALL VERTICAL & HORIZONTAL BENDS TO BE 3D, SUITABLE FOR INTELLIGENT TOOL INSPECTION ROUTINES. | |

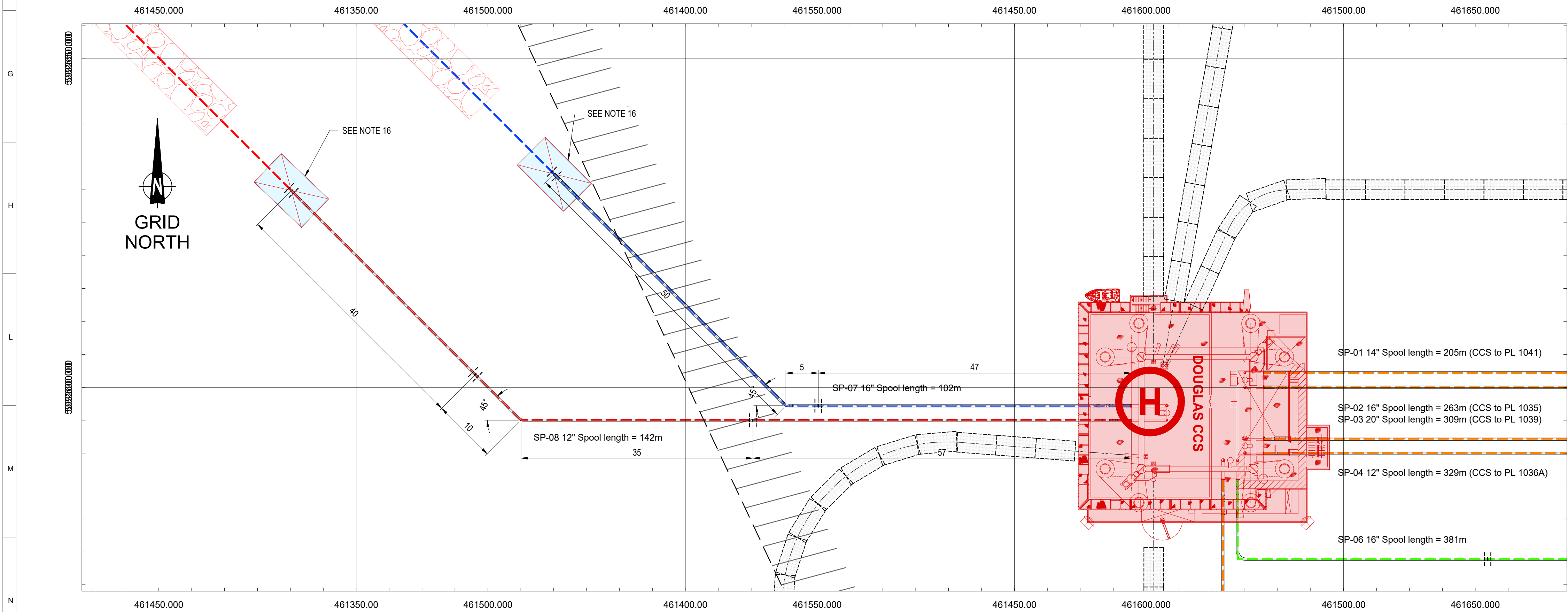


LEGEND

CD-FE	03	07.06.2023	RE-ISSUED FINAL		N.Z	M.R	S.G
CD-FE	02	16.08.2023	RE-ISSUED FOR COMMENT		N.Z	M.R	S.G
CD-FE	01	07.07.23	ISSUED FINAL		N.Z	M.R	S.G
CD-FE	00	13.06.2023	ISSUED FOR COMMENT		N.Z	M.R	S.G
Utility Status	Revision Number	Date	Description	Prepared	Checked	Approved	Approved EIT UK
Company logo and business name				  			
Facility and Sub Facility Name				Company Document ID			
DOUGLAS SUBSEA				105600BSDN84152			
Project Name				Job N. JA9814			
LBA CCS Transport and Storage				Scale 1500 @A1			
Document Title				Sheet of Sheets			
OFFSHORE PIPELINES APPROACH DRAWING - DOUGLAS CCS PLATFORM				Supersedes N.			
				Superseded by N.			
				Plant Area N/A		Plant Unit N/A	



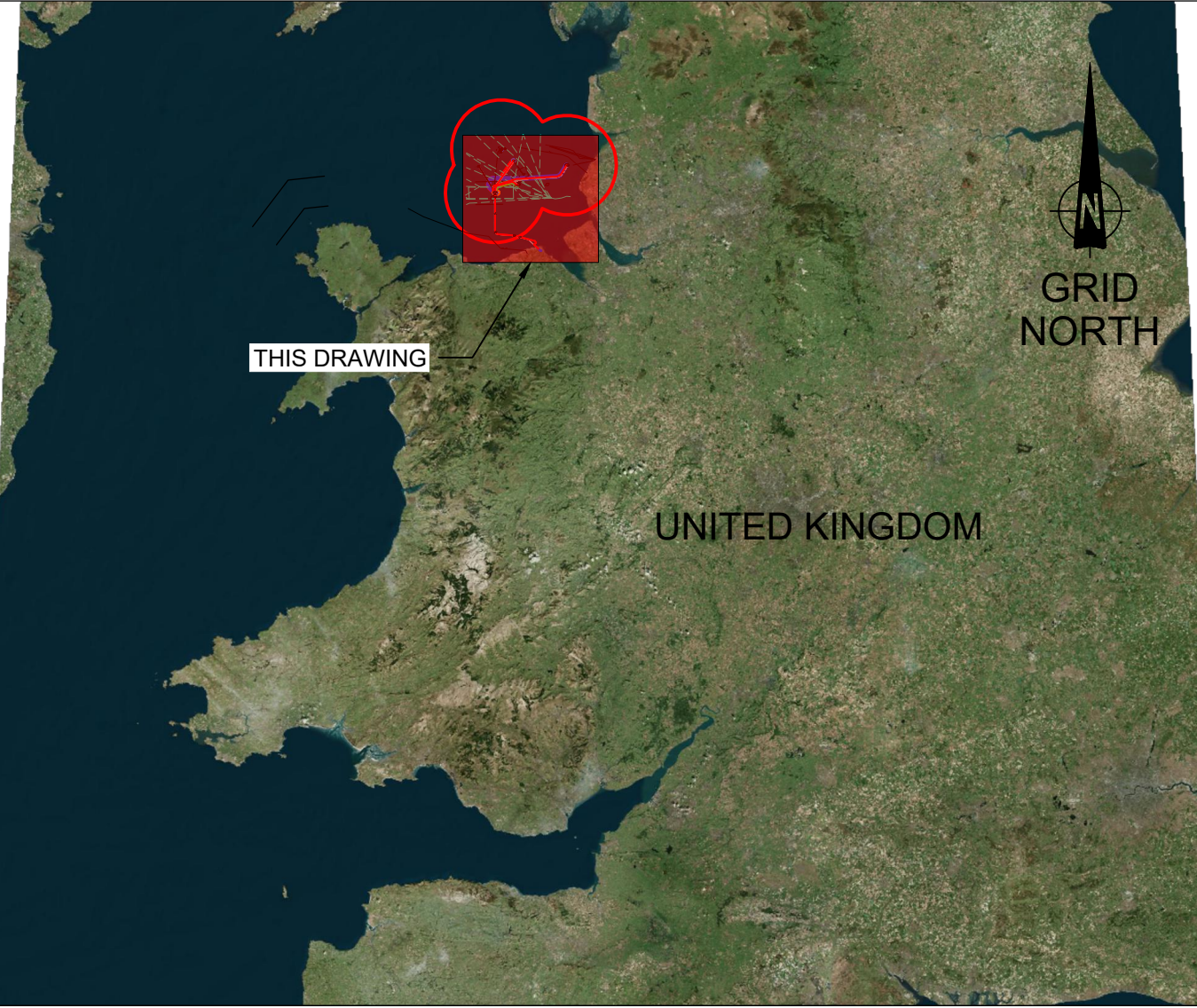
PLAN VIEW
SP- 03, 04 & 06 (20" / 12" & 16" SPOOL CROSSINGS)
SCALE 1:650
CONCRETE MATTRESSES OMITTED FOR CLARITY



PLAN VIEW
SP- 07 & 08 (12" & 16" SPOOL CROSSINGS)
SCALE 1:400
CONCRETE MATTRESSES OMITTED FOR CLARITY

REFERENCE DOCUMENTS	
NUMBER	TITLE
1025H0BSDN84002	OVERALL FACILITY SCHEMATIC
1025H0BGRV09422	PIPELINE/CABLE ROUTE ENGINEERING GEOLOGICAL GROUND MODEL
1025H0BGRV09420	PHASE 2C NEARSHORE ENGINEERING GEOLOGICAL GROUND MODEL

KEY PLAN



GENERAL NOTES

- ALL DIMENSIONS AND COORDINATES ARE IN METRES UNLESS NOTED OTHERWISE.
 - GLOBAL COORDINATE REFERENCE SYSTEM: European Datum 1950 UTM Zone 30N (EPSG: 23030)
- | | |
|-----------------------------|----------------------------------|
| PROJECTED COORDINATE SYSTEM | European Datum 1950 UTM Zone 30N |
| PROJECTION | TRANSVERSE MERCATOR |
| LINEAR UNIT | METERS (1.0) |
| FALSE EASTING | 500000.0 |
| FALSE NORTHING | 0.0 |
| CENTRAL MERIDIAN | -3.0 |
| SCALE FACTOR | 0.9996 |
| LATITUDE OF ORIGIN | 0.0 |
-
- | | |
|------------------------------|-----------------------------|
| GEOGRAPHIC COORDINATE SYSTEM | European Datum 1950 |
| ANGULAR UNIT | DEGREE (0.0174532925199433) |
| PRIME MERIDIAN | GREENWICH (0.0) |
| DATUM | European 1950 |
| SPHEROID | International 1924 |
| SEMMIAJOR AXIS | 6378388.0 |
| SEMINOR AXIS | 6356911.946127946 |
| INVERSE FLATTENING | 297 |
- ALL SPOOL BENDS TO HAVE 500mm PUP PIECE WELDED AT BOTH ENDS OF ELBOW.
 - ALL VERTICAL & HORIZONTAL BENDS TO BE 3D, SUITABLE FOR INTELLIGENT TOOL INSPECTION ROUTINES.

LEGEND

CD-FE	03	07.09.2023	RE-ISSUED FINAL	N.Z	M.R	S.G	
CD-FE	02	18.08.2023	RE-ISSUED FOR COMMENT	N.Z	M.R	S.G	
CD-FE	01	07.07.2023	ISSUED FINAL	N.Z	M.R	S.G	
CD-FE	00	13.06.2023	ISSUED FOR COMMENT	N.Z	M.R	S.G	
Validity	Rev.	Date	Description	Prepared	Checked	Approved	Approved
Status	Number						Eni UK
Revision Index							
Company logo and business name				Company Document ID			
				105600BSDN84152			
Facility and Sub Facility Name				Job: N. JA0614			
DOUGLAS SUBSEA				Project Name			
				LBA CCS Transport and Storage			
Document Title				Scale			
				AS SHOWN			
				Sheet of Sheets			
				3 / 3			
				Supersedes N.			
				Plant Area			
				NA			
				Plant Unit			
				NA			

OFFSHORE PIPELINES APPROACH
DRAWING - DOUGLAS CCS PLATFORM