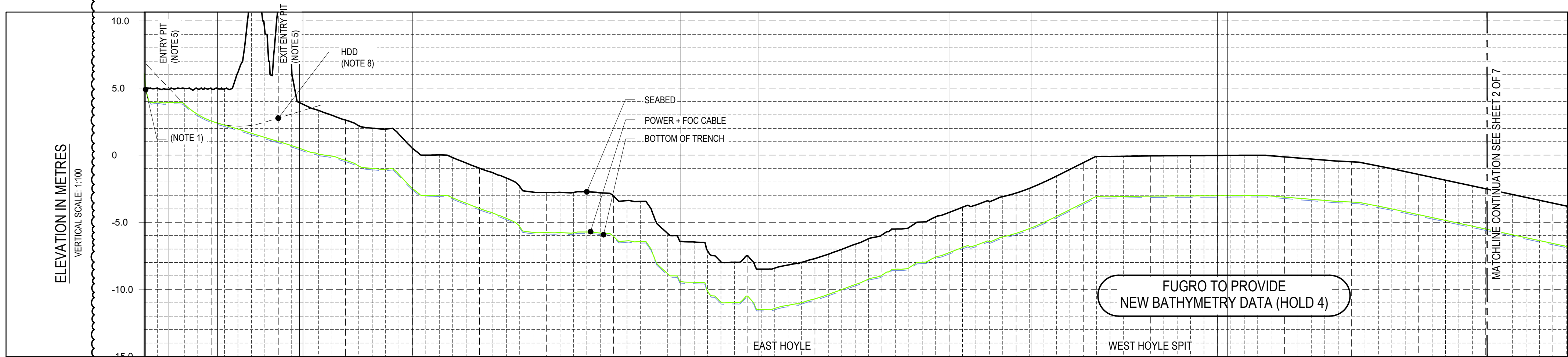


BATHYMETRY & SEABED FEATURES  
HORIZONTAL SCALE 1:10,000



SEABED PROFILE  
HORIZONTAL SCALE 1:10,000

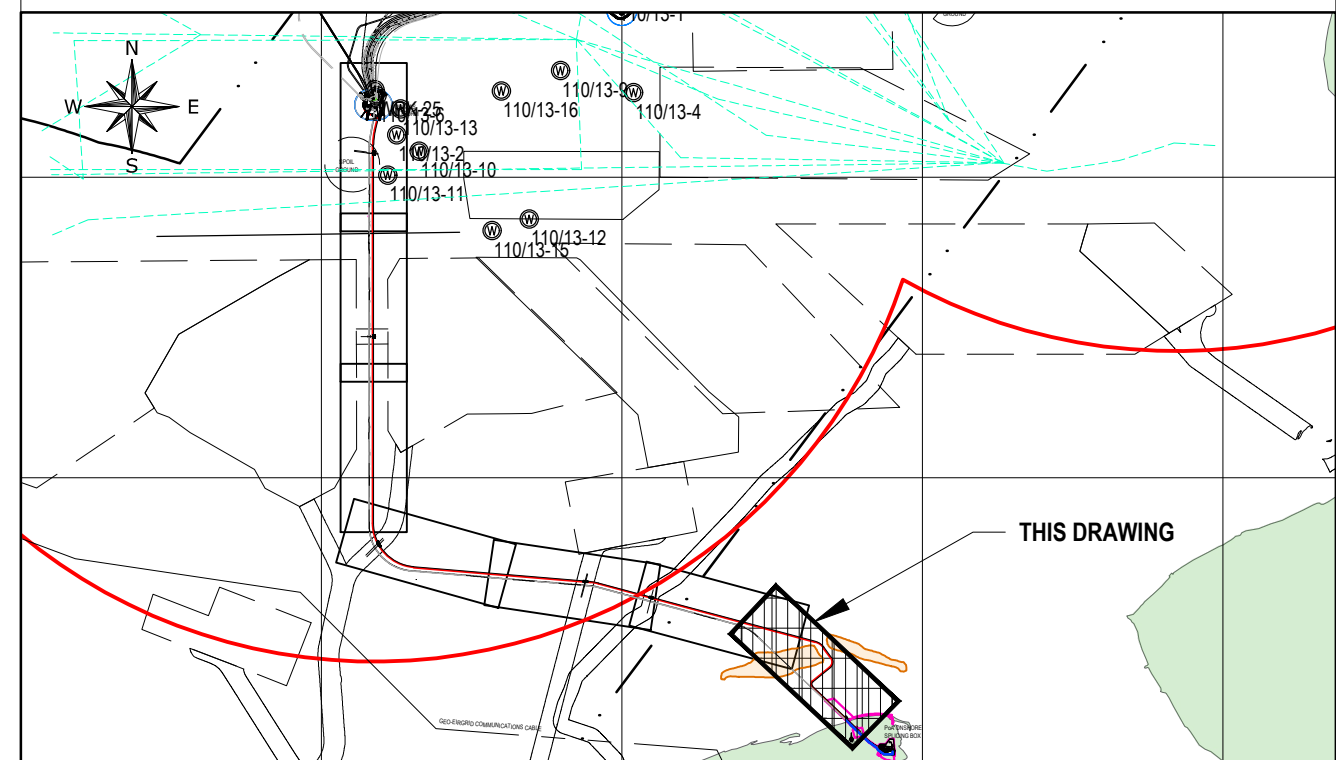
COMMENTS	<div>START POINT JUNCTION BOX KP 0+000</div> <div>HDD ENTRY PIT KP 0+062</div> <div>RDX-1 KP 0+274</div> <div>IP-01 RHB R100m HDD EXIT PIT KP 0+592</div> <div>IP-02 RHB R130m</div> <div>IP-03 LHB R220m</div> <div>IP-04 LHB R470m</div> <div>1. TO BE CONFIRMED.</div> <div>2. TO BE CONFIRMED.</div> <div>3. TO BE CONFIRMED.</div> <div>4. TO BE CONFIRMED.</div>											
KP ALONG ROUTE	0.09	0.27	0.57	0.59	1.0	2.0	2.28	3.0	3.30	4.0	4.03	5.0
SIZE / NAME / TAG	156.0mm O.D. / SINGLE ARMoured SUBMARINE POWER & TELECOMMUNICATION CABLE / 19/33(36)kV POWER CABLE + 48 CORE FIBRE OPTIC CABLE											
DETAILS	COPPER CONDUCTOR + XLPE + COPPER WIRES + COPPER FOIL BONDED TO PE SHEATH											
MIN BEND RADIUS (OPERATIONAL)	3m (HOLD-1)											
APPROX. WEIGHT (AIR / WATER)	47 kg/m / 30 kg/m (HOLD-2)											
TRENCH DETAILS	BURIED											
COVER REQUIREMENTS	1.1m MIN. COVER TOP OF POWER + FOC CABLE 3.0m MIN. COVER TOP OF POWER + FOC CABLE											
LAY TOLERANCE	±0.5m HDD TBC BY CONTRACTOR ±3.0m											
CROSSING DETAILS	NONE											
MINIMUM BREAKING LOAD	45.6 kNm² (HOLD-3)											
SOIL TYPE (TOP LAYER)	SAND											

MATCHLINE CONTINUATION SEE SHEET 2 OF 7

DETAILS  
SCALE 1:10,000

REFERENCE DOCUMENTS	
NUMBER	TITLE
1025H0BSDG84104	NEW OFFSHORE POWER CABLE AND FIBRE OPTIC FIELD LAYOUT (OFFSHORE SECTION)
1025H0BSDN84112	OFFSHORE POWER CABLE APPROACH DRAWINGS
1025H0BSDG84100	NEW OFFSHORE POWER CABLE AND FIBRE OPTIC FIELD LAYOUT (ONSHORE SECTION)

### KEY PLAN



### LEGEND

#### ABBREVIATIONS

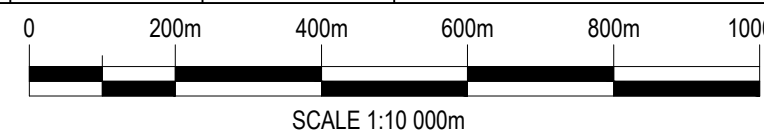
KP	-	KILOMETRE POINT	DP	-	DOUGLAS PLATFORM
IP-XX	-	INTERSECTION POINT	HN	-	HAMILTON NORTH PLATFORM
TG-XX	-	TANGENT POINT OF BEND	LNX	-	LENNOX PLATFORM
TOP	-	TOP OF PIPE	HM	-	HAMILTON MAIN PLATFORM
BOP	-	BOTTOM OF PIPE	SHT	-	SHEET
FOC	-	FIBRE OPTIC CABLE	XX-PLX-01	-	LINE No - PIPELINE CROSSING - No.
NTS	-	NOT TO SCALE	XX-FLX-01	-	LINE No - FAULT LINE CROSSING - No.
OD	-	OUTSIDE DIAMETER	XX-FOX-01	-	LINE No - FOC / POWER CABLE CROSSING - No.
SP	-	START POINT	XX-UX-01	-	LINE No - UMBILICAL CROSSING - No.
EP	-	END POINT	XX-FEX-01	-	LINE No - FENCELINE CROSSING - No.
PC	-	POINT OF CURVATURE (ENTRY)	XX-RDX-01	-	LINE No - ROAD CROSSING - No.
PT	-	POINT OF TANGENT (EXIT)			

	EXISTING PROFILE.		SHIP WRECK LOCATION AND ID NUMBER.
	PROPOSED PROFILE.		ABANDONED WELL LOCATION AND ID NUMBER.
	BOTTOM OF TRENCH PROFILE.		

#### NOTES

- START POINT OF KP 0+00 IS TAKEN FROM ONSHORE SPLICING JUNCTION BOX. SEE DRAWING SUBMARINE CABLE JUNCTION BOX COMPOUND (TYPICAL) ELECTRICAL LAYOUT. No. 1025H0BEDP47307 FOR FURTHER DETAILS.
- BATHYMETRY HAS BEEN DEVELOPED FROM AVAILABLE CONTOURS. BATHYMETRY TO BE CONFIRMED ONCE SURVEY HAS BEEN CONDUCTED.
- CABLE PROTECTION TO CONFORM 1025H0BSRV84107, OFFSHORE POWER CABLE PROTECTION REQUIREMENT.
- INSTALLATION REQUIREMENTS TO CONFORM 1025H0BSSA84108, POWER CABLE INSTALLATION SPECIFICATION.
- HDD ENTRY AND EXIT PIT LOCATIONS SHOWN IN THIS ALIGNMENT SHEET ARE PRELIMINARY AND HAVE BEEN TAKEN FROM CONSTRUCTABILITY REPORT - POINT OF AYR AND FORESHORE 1025H0BJRV09235. TOTAL LENGTH, ALLOWABLE RADIUS AT ENTRY AND EXIT PIT LOCATIONS TO BE CONFIRMED BY CONTRACTOR DURING DETAILED DESIGN ENGINEERING.
- FOR ONSHORE TYPICAL ROAD CROSSING DETAIL SEE DRAWING No. 1025HXBLLDQ80030 & 1025HXBLLDQ80032.
- OBSTRUCTIONS AND GEOHAZARD INFORMATION ALONG SEABED CABLE CORRIDOR TO BE CONFIRMED. INFORMATION SHOWN IN THIS ALIGNMENT SHEET IS PRELIMINARY.
- HDD CABLE PROFILE TO BE CONFIRMED BY CONTRACTOR DURING DETAILED DESIGN ENGINEERING.
- INTER-TIDAL BEACH PROFILE TAKEN FROM ENVIRONMENT GOV.UK (SJ18nw\_DTM\_2m), EAST HOYLE AND WEST HOYLE SPIT SEABED PROFILE TAKEN FROM DRAWING No. D-250-QL-001& 002, POINT OF AYR / DOUGLAS 20" GAS EXPORT PIPELINE 3" CONDENSATE LINES ALIGNMENT SHT 1.
- FOR NEARSHORE CABLE MARINE OPERATIONS / INSTALLATION SEE DWG No. 1025HTBNDN8502.

(POINT OF AYR - DOUGLAS CCS) ROUTE CROSSING TABLE - CABLE #2 (Offshore Overall length = 34.46 Km)				
Tag No.	KP	Eastings	Northings	Description of Crossing
RDX-1	0+274	477686.70	5911758.88	ROAD CROSSING (ONSHORE)
PoA-X-1	9+842	470974.84	5916002.39	BURBO BANK Wind Farm
PoA-X-2	12+089	468795.03	5916535.10	NORTH HOYLE Wind Farm (Export Cable)
PoA-X-3	12+108	468776.17	5916536.68	NORTH HOYLE Wind Farm (Export Cable)
PoA-X-4	19+276	461904.20	5917763.30	GWYNT-Y-MOR Wind Farm (Export Cable)
PoA-X-5	19+338	461875.07	5917817.57	GWYNT-Y-MOR Wind Farm (Export Cable)
PoA-X-6	26+248	461713.35	5924702.50	GWYNT-Y-MOR Wind Farm (Inter Array Cable)
PoA-X-7	32+333	461713.35	5930787.10	WESTERN LINK HVDC CABLES - POLE 1
PoA-X-8	32+364	461713.35	5930818.38	WESTERN LINK HVDC CABLES - POLE 2
PoA-X-9	33+671	461757.62	5932038.30	EXISTING 2 x 3" CONDENSATE (PL 1032 + 1033) TO PoA
PoA-X-10	33+682	461747.58	5932042.82	EXISTING 20" GAS (PL 1030) TO PoA



SCALE 1:10 000m

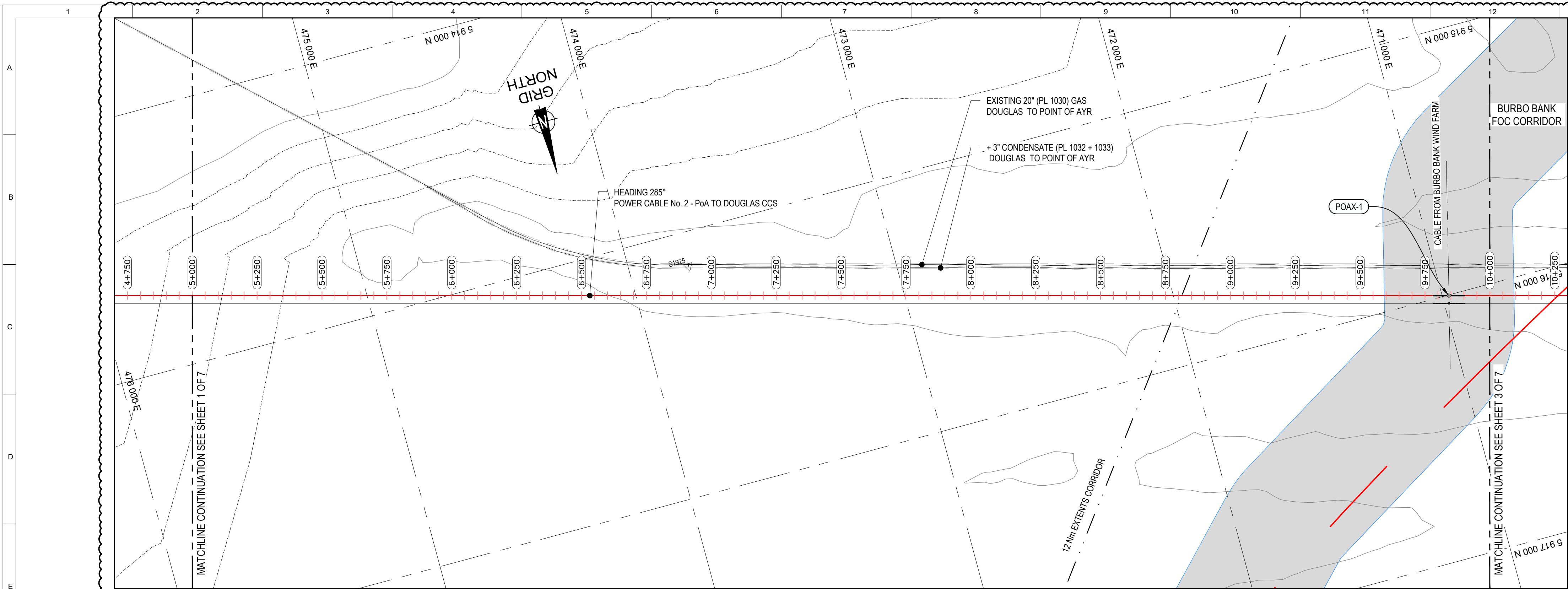
### GEODETIC PARAMETERS

ELLIPSOID	: INTERNATIONAL 1924
DATUM	: EUROPEAN 1950 (ED50)
PROJECTION	: UNIVERSAL TRANSVERSE MERCATOR (UTM)
GRID ZONE	: 30N
CENTRAL MERIDIAN	: 3° E
LATITUDE OF ORIGIN	: 0° N
FALSE EASTING	: 500 000 m
FALSE NORTHING	: 0
SCALE FACTOR ON CL	: 0.9996

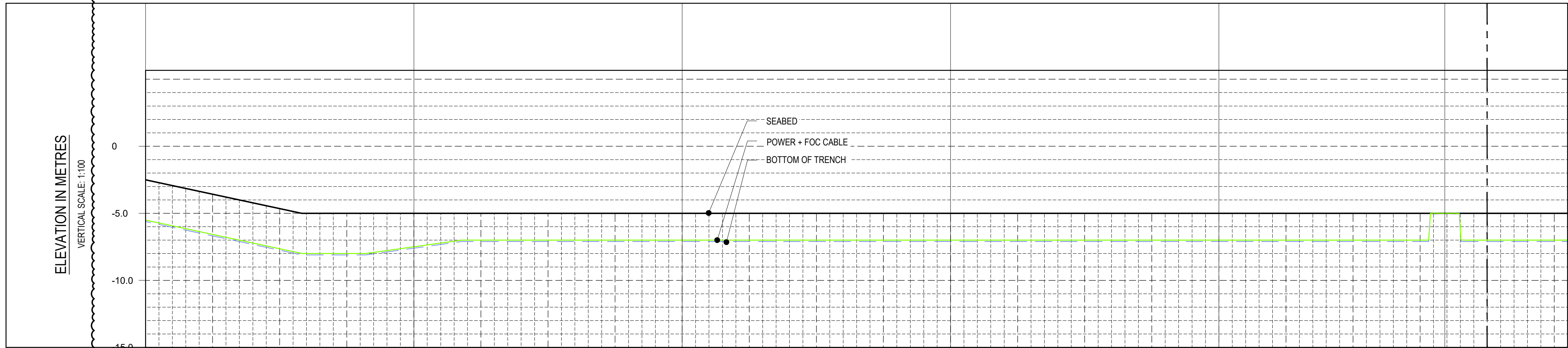
CD-FE	02	06.10.2021	RE-ASSUED FOR COMMENT				
CD-FE	01	21.11.2021	ISSUED FINAL				
CD-FE	00	31.10.2021	ISSUED FOR COMMENT				
Validity	Rev.	Number	Date	Description	Prepared	Checked	Approved
Revision Index							
Company logo and business name				Company Document ID			
Facility and Sub Facility Name				Project Name			
DOUGLAS SUBSEA				LBA CCS Transport and Storage			
Job N. JA0614				Scale			
1:10K @A1				Sheet of Sheets			
1/7							

OFFSHORE POWER CABLE No. 2 - PoA TO DOUGLAS CCS  
ALIGNMENT SHEET KP 0+000 - KP 5+000





BATHYMETRY & SEABED FEATURES  
HORIZONTAL SCALE 1:10,000



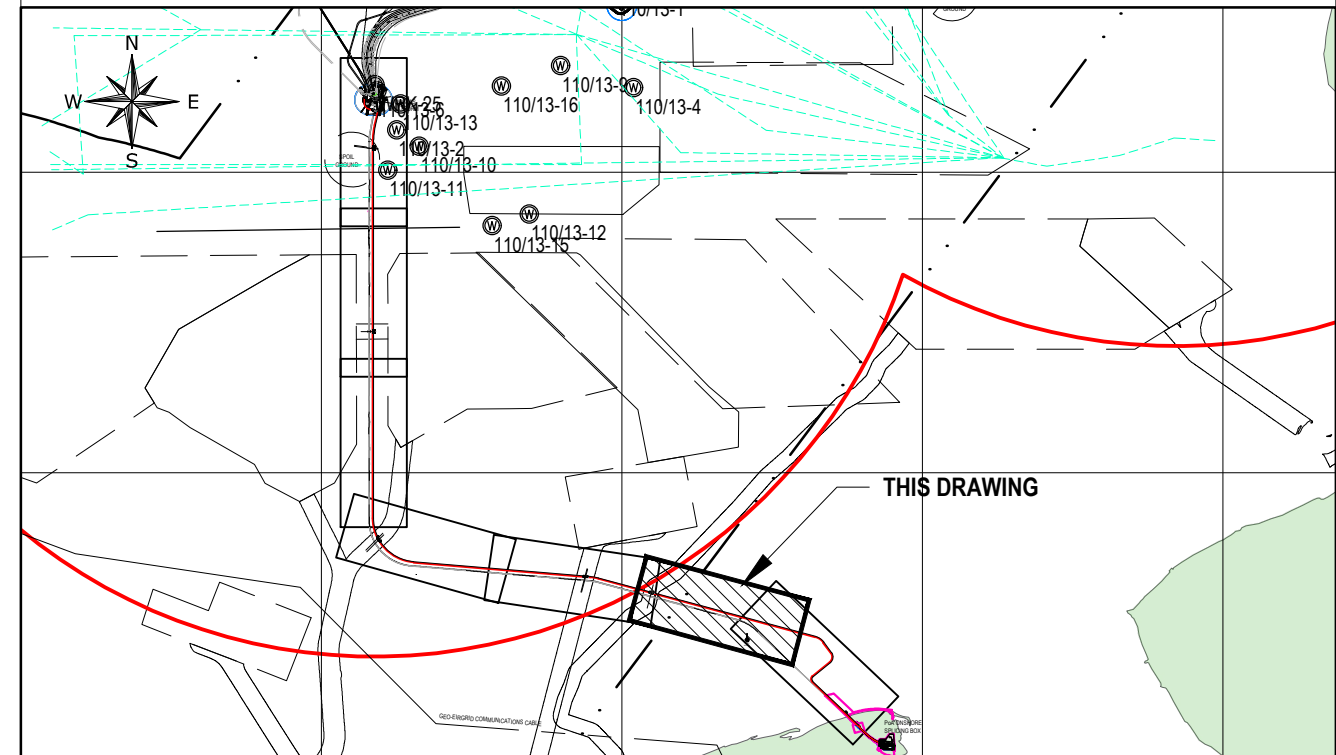
SEABED PROFILE  
HORIZONTAL SCALE 1:10,000

COMMENTS	
KP ALONG ROUTE	5.0 6.0 7.0 8.0 9.0 9.84 10.0
SIZE / NAME / TAG	156.0mm O.D. / SINGLE ARMoured SUBMARINE POWER & TELECOMMUNICATION CABLE / 19/33(36)kV POWER CABLE + 48 CORE FIBRE OPTIC CABLE
DETAILS	COPPER CONDUCTOR + XLPE + COPPER WIRES + COPPER FOIL BONDED TO PE SHEATH
MIN BEND RADIUS (OPERATIONAL)	3m (HOLD-1) 2m (HOLD-1)
APPROX. WEIGHT (AIR / WATER)	47 kg/m / 30 kg/m (HOLD-2)
TRENCH DETAILS	BURIED
COVER REQUIREMENTS	3.0m MIN. COVER TOP OF POWER + FOC CABLE 2.0m MIN. COVER TOP OF POWER + FOC CABLE
LAY TOLERANCE	±3.0m ±10.0m
CROSSING DETAILS	NONE
MINIMUM BREAKING LOAD	45.6 kNm <sup>2</sup> (HOLD-3)
SOIL TYPE (TOP LAYER)	SAND

DETAILS  
SCALE 1:10,000

REFERENCE DOCUMENTS	
NUMBER	TITLE
1025H0BSDG84104	NEW OFFSHORE POWER CABLE AND FIBRE OPTIC FIELD LAYOUT (OFFSHORE SECTION)
1025H0BSDN84112	OFFSHORE POWER CABLE APPROACH DRAWINGS
1025H1BSDG84174	TYPICAL CROSSING GA DRAWING FOR POWER CABLE FROM POA TO DOUGLAS CCS (POAX-1)

## KEY PLAN



## LEGEND

### ABBREVIATIONS

KP	-	KILOMETRE POINT	DP	-	DOUGLAS PLATFORM
IP-XX	-	INTERSECTION POINT	HN	-	HAMILTON NORTH PLATFORM
TG-XX	-	TANGENT POINT OF BEND	LNX	-	LENNOX PLATFORM
TOP	-	TOP OF PIPE	HM	-	HAMILTON MAIN PLATFORM
BOP	-	BOTTOM OF PIPE	SHT	-	SHEET
FOC	-	FIBRE OPTIC CABLE	XX-PLX-01	-	LINE No - PIPELINE CROSSING - No.
NTS	-	NOT TO SCALE	XX-FLX-01	-	LINE No - FAULT LINE CROSSING - No.
OD	-	OUTSIDE DIAMETER	XX-FOX-01	-	LINE No - FOC / POWER CABLE CROSSING - No.
SP	-	START POINT	XX-UX-01	-	LINE No - UMBILICAL CROSSING - No.
EP	-	END POINT	XX-FEX-01	-	LINE No - FENCELINE CROSSING - No.
PC	-	POINT OF CURVATURE (ENTRY)	XX-RDX-01	-	LINE No - ROAD CROSSING - No.
PT	-	POINT OF TANGENT (EXIT)			

	EXISTING PROFILE.		SHIP WRECK LOCATION AND ID NUMBER.
	PROPOSED PROFILE.		ABANDONED WELL LOCATION AND ID NUMBER.
	BOTTOM OF TRENCH PROFILE.		

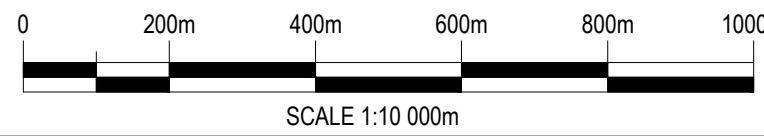
## NOTES

- BATHYMETRY HAS BEEN DEVELOPED FROM AVAILABLE CONTOURS. BATHYMETRY TO BE CONFIRMED ONCE SURVEY HAS BEEN CONDUCTED.
- OBSTRUCTIONS AND GEOHAZARD INFORMATION ALONG SEABED CABLE CORRIDOR TO BE CONFIRMED. INFORMATION SHOWN IN THIS ALIGNMENT SHEET IS PRELIMINARY.
- FOR CABLE PROTECTION AND SEABED COVER REQUIREMENTS SEE OFFSHORE POWER CABLE PROTECTION REQUIREMENT DOC. No. 1025H0BSRV84107 AND OFFSHORE CABLES PRELIMINARY CROSSING DESIGN REPORT DOC No. 1025DSBSC284173.
- FOR POWER CABLE INSTALLATION REQUIREMENTS SEE POWER CABLE INSTALLATION SPECIFICATION DOC. No. 1025H0BSSA84108.

## HOLDS

- TO BE CONFIRMED.
- TO BE CONFIRMED.
- TO BE CONFIRMED.

(POINT OF AYR - DOUGLAS CCS) ROUTE CROSSING TABLE - CABLE #2 (Offshore Overall length = 34.46 Km)				
Tag No.	KP	Eastng	Northing	Description of Crossing
RDX-1	0+274	477686.70	5911758.88	ROAD CROSSING (ONSHORE)
PoAX-1	9+842	470974.84	5916002.39	BURBO BANK Wind Farm
PoAX-2	12+089	468795.03	5916535.10	NORTH HOYLE Wind Farm (Export Cable)
PoAX-3	12+108	468776.17	5916536.68	NORTH HOYLE Wind Farm (Export Cable)
PoAX-4	19+276	461904.20	5917763.30	GWYNT-Y-MOR Wind Farm (Export Cable)
PoAX-5	19+338	461875.07	5917817.57	GWYNT-Y-MOR Wind Farm (Export Cable)
PoAX-6	26+248	461713.35	5924702.50	GWYNT-Y-MOR Wind Farm (Inter Array Cable)
PoAX-7	32+333	461713.35	5930787.10	WESTERN LINK HVDC CABLES - POLE 1
PoAX-8	32+364	461713.35	5930818.38	WESTERN LINK HVDC CABLES - POLE 2
PoAX-9	33+671	461757.62	5932038.30	EXISTING 2 x 3" CONDENSATE (PL 1032 + 1033) TO PoA
PoAX-10	33+682	461747.58	5932042.82	EXISTING 20" GAS (PL 1030) TO PoA



## GEODETC PARAMETERS

ELLIPSOID	: INTERNATIONAL 1924
DATUM	: EUROPEAN 1950 (ED50)
PROJECTION	: UNIVERSAL TRANSVERSE MERCATOR (UTM)
GRID ZONE	: 30N
CENTRAL MERIDIAN	: 3° E
LATITUDE OF ORIGIN	: 0° N
FALSE EASTING	: 500 000 m
FALSE NORTHING	: 0
SCALE FACTOR ON CL	: 0.9996

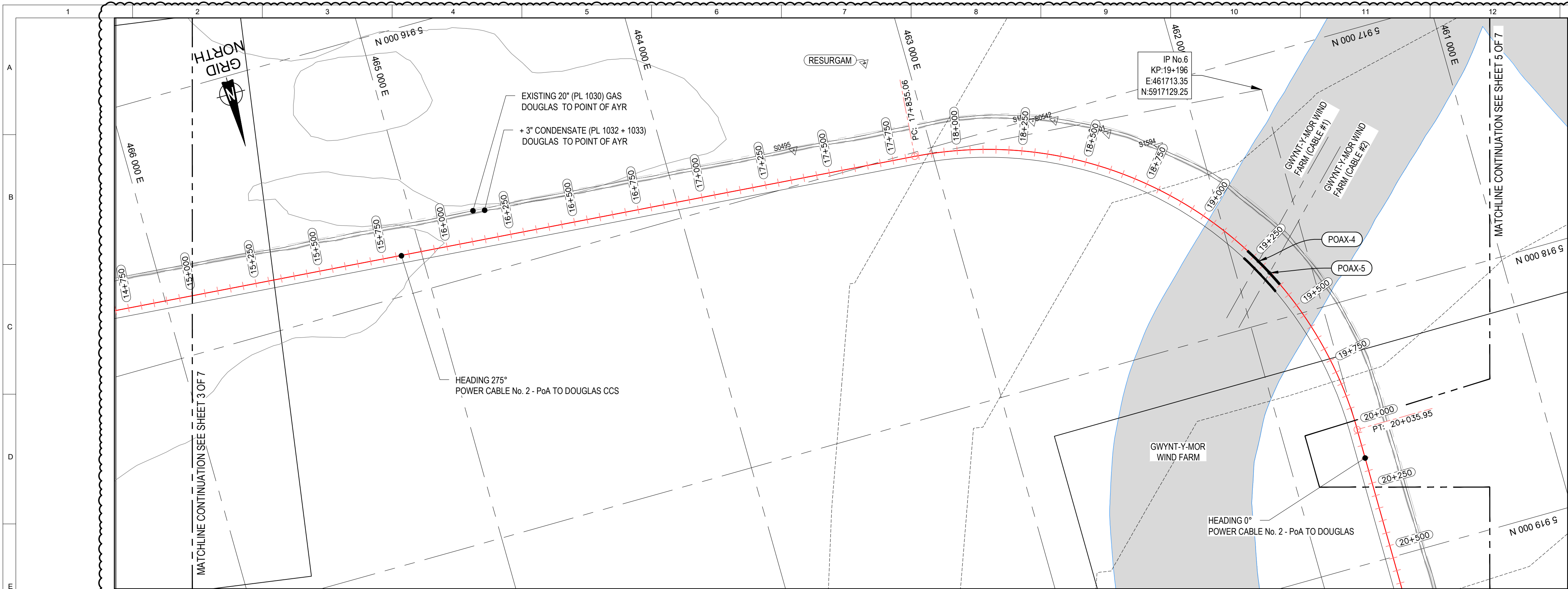
CD-FE	02	06.10.2021	RE-ASSUED FOR COMMENT	N.Z	E.R	S.G	
CD-FE	01	21.11.2022	ISSUED FINAL	N.Z	S.R	S.G	
CD-FE	00	31.10.2022	ISSUED FOR COMMENT	N.Z	S.R	S.G	
Validity	Rev.	Number	Date	Description	Prepared	Checked	Approved
Revision Index							
Company logo and business name				Company Document ID			
Facility and Sub Facility Name				Project Name	Scale	Sheet of Sheets	
DOUGLAS SUBSEA				LBA CCS Transport and Storage	1:10K @A1	2 / 7	
Document title				Drawn by N.	Checked by N.	Plant Unit	
				NA	NA	NA	

## OFFSHORE POWER CABLE No. 2 - PoA TO DOUGLAS CCS ALIGNMENT SHEET KP 5+000 - KP 10+000

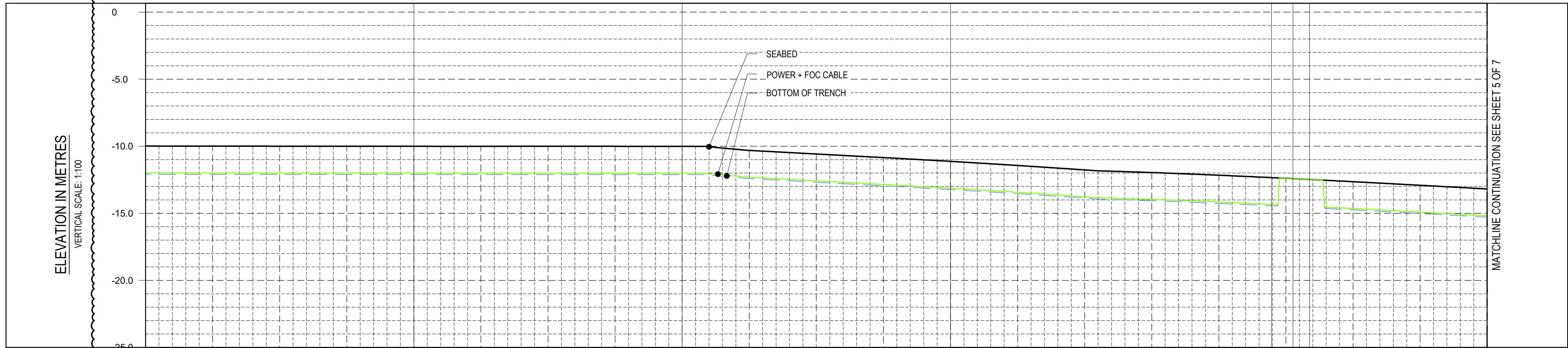








BATHYMETRY & SEABED FEATURES  
HORIZONTAL SCALE 1:10,000



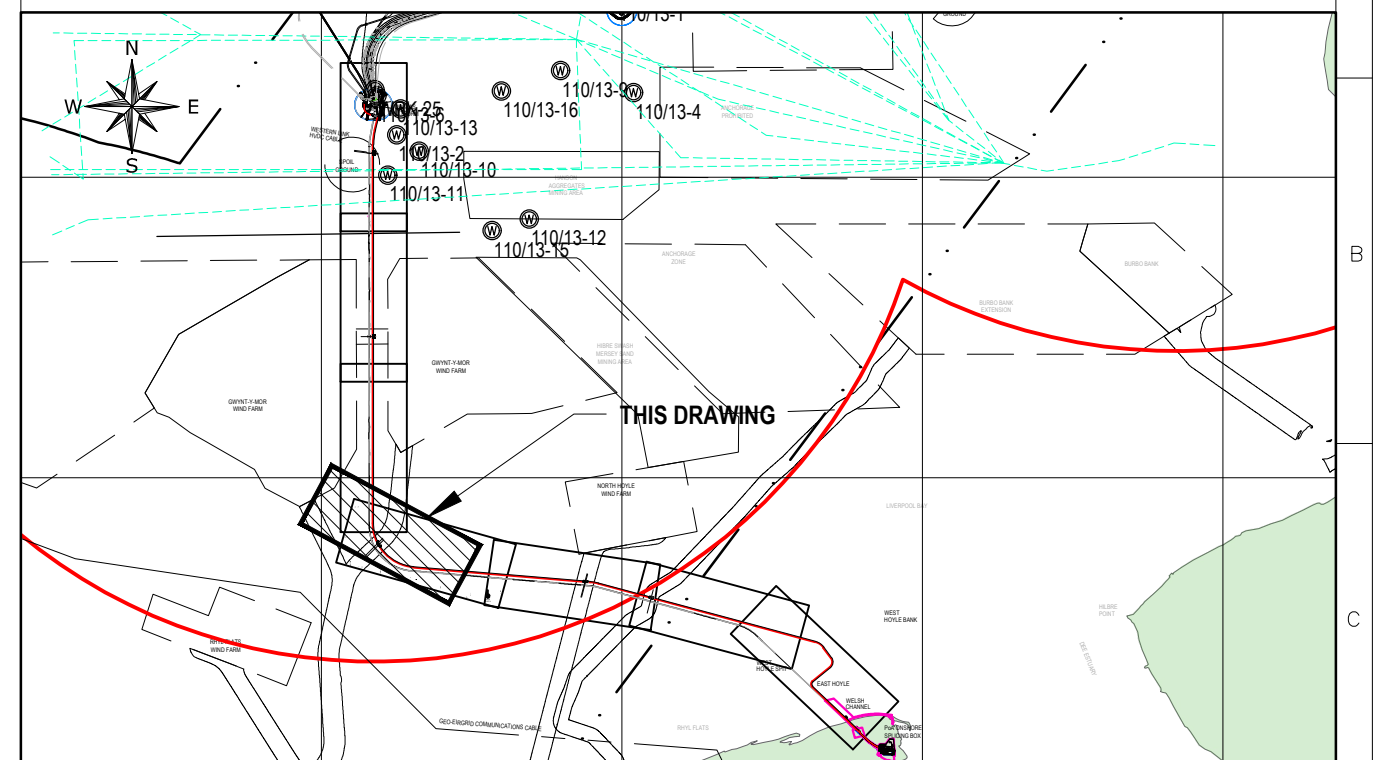
SEABED PROFILE  
HORIZONTAL SCALE 1:10,000

COMMENTS	15.0	16.0	17.0	18.0	19.0	19.20	19.27	19.34	20.0
KP ALONG ROUTE	15.0	16.0	17.0	18.0	19.0	19.20	19.27	19.34	20.0
SIZE / NAME / TAG	156.0mm O.D. / SINGLE ARMoured SUBMARINE POWER & TELECOMMUNICATION CABLE / 19/33/36kV POWER CABLE + 48 CORE FIBRE OPTIC CABLE								
DETAILS	COPPER CONDUCTOR + XLPE + COPPER WIRES + COPPER FOIL BONDED TO PE SHEATH								
MIN BEND RADIUS (OPERATIONAL)	2m (HOLD-1)								
APPROX. WEIGHT (AIR / WATER)	47 kg/m / 30 kg/m (HOLD-2)								
TRENCH DETAILS	BURIED								
COVER REQUIREMENTS	2.0m MIN. COVER TOP OF POWER + FOC CABLE								
LAY TOLERANCE	±10.0m								
CROSSING DETAILS	NONE								
MINIMUM BREAKING LOAD	45.6 kNm <sup>2</sup> (HOLD-3)								
SOIL TYPE (TOP LAYER)	SAND								

DETAILS  
SCALE 1:10,000

REFERENCE DOCUMENTS			
NUMBER	TITLE		
1025H0BSDG84104	NEW OFFSHORE POWER CABLE AND FIBRE OPTIC FIELD LAYOUT (OFFSHORE SECTION)		
1025H0BSDN84112	OFFSHORE POWER CABLE APPROACH DRAWINGS		
1025H0BSDG84176	TYPICAL CROSSING GA DRAWING FOR POWER CABLE FROM PoA TO DOUGLAS CCS (PoAX-4)		

## KEY PLAN



## LEGEND

### ABBREVIATIONS

KP	-	KILOMETRE POINT	DP	-	DOUGLAS PLATFORM
IP-XX	-	INTERSECTION POINT	HN	-	HAMILTON NORTH PLATFORM
TG-XX	-	TANGENT POINT OF BEND	LNX	-	LENNOX PLATFORM
TOP	-	TOP OF PIPE	HM	-	HAMILTON MAIN PLATFORM
BOP	-	BOTTOM OF PIPE	SHT	-	SHEET
FOC	-	FIBRE OPTIC CABLE	XX-PLX-01	-	LINE No - PIPELINE CROSSING - No.
NTS	-	NOT TO SCALE	XX-FLX-01	-	LINE No - FAULT LINE CROSSING - No.
OD	-	OUTSIDE DIAMETER	XX-FOX-01	-	LINE No - FOC / POWER CABLE CROSSING - No.
SP	-	START POINT	XX-UX-01	-	LINE No - UMBILICAL CROSSING - No.
EP	-	END POINT	XX-FEX-01	-	LINE No - FENCELINE CROSSING - No.
PC	-	POINT OF CURVATURE (ENTRY)	XX-RDX-01	-	LINE No - ROAD CROSSING - No.
PT	-	POINT OF TANGENT (EXIT)			

	EXISTING PROFILE.		SHIP WRECK LOCATION AND ID NUMBER.
	PROPOSED PROFILE.		ABANDONED WELL LOCATION AND ID NUMBER.
	BOTTOM OF TRENCH PROFILE.		

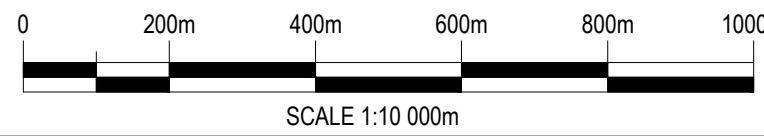
## NOTES

- BATHYMETRY HAS BEEN DEVELOPED FROM AVAILABLE CONTOURS. BATHYMETRY TO BE CONFIRMED ONCE SURVEY HAS BEEN CONDUCTED.
- OBSTRUCTIONS AND GEOHAZARD INFORMATION ALONG SEABED CABLE CORRIDOR TO BE CONFIRMED. INFORMATION SHOWN IN THIS ALIGNMENT SHEET IS PRELIMINARY.
- FOR CABLE PROTECTION AND SEABED COVER REQUIREMENTS SEE OFFSHORE POWER CABLE PROTECTION REQUIREMENT DOC. No. 1025H0BSRV84107 AND OFFSHORE CABLES PRELIMINARY CROSSING DESIGN REPORT DOC No. 1025DSBSC284173.
- FOR POWER CABLE INSTALLATION REQUIREMENTS SEE POWER CABLE INSTALLATION SPECIFICATION DOC. No. 1025H0BSA84108.

## HOLDS

- TO BE CONFIRMED.
- TO BE CONFIRMED.
- TO BE CONFIRMED.

(POINT OF AYR - DOUGLAS CCS) ROUTE CROSSING TABLE - CABLE #2 (Offshore Overall length = 34.46 Km)				
Tag No.	KP	Eastings	Northings	Description of Crossing
RDX-1	0+274	477686.70	5911758.88	ROAD CROSSING (ONSHORE)
PoAX-1	9+842	470974.84	5916002.39	BURBO BANK Wind Farm
PoAX-2	12+089	468795.03	5916535.10	NORTH HOYLE Wind Farm (Export Cable)
PoAX-3	12+108	468776.17	5916536.68	NORTH HOYLE Wind Farm (Export Cable)
PoAX-4	19+276	461904.20	5917763.30	GWYNT-Y-MOR Wind Farm (Export Cable)
PoAX-5	19+338	461875.07	5917817.57	GWYNT-Y-MOR Wind Farm (Export Cable)
PoAX-6	26+248	461713.35	5924702.50	GWYNT-Y-MOR Wind Farm (Inter Array Cable)
PoAX-7	32+333	461713.35	5930787.10	WESTERN LINK HVDC CABLES - POLE 1
PoAX-8	32+364	461713.35	5930818.38	WESTERN LINK HVDC CABLES - POLE 2
PoAX-9	33+671	461757.62	5932038.30	EXISTING 2 x 3" CONDENSATE (PL 1032 + 1033) TO PoA
PoAX-10	33+682	461747.58	5932042.82	EXISTING 20" GAS (PL 1030) TO PoA

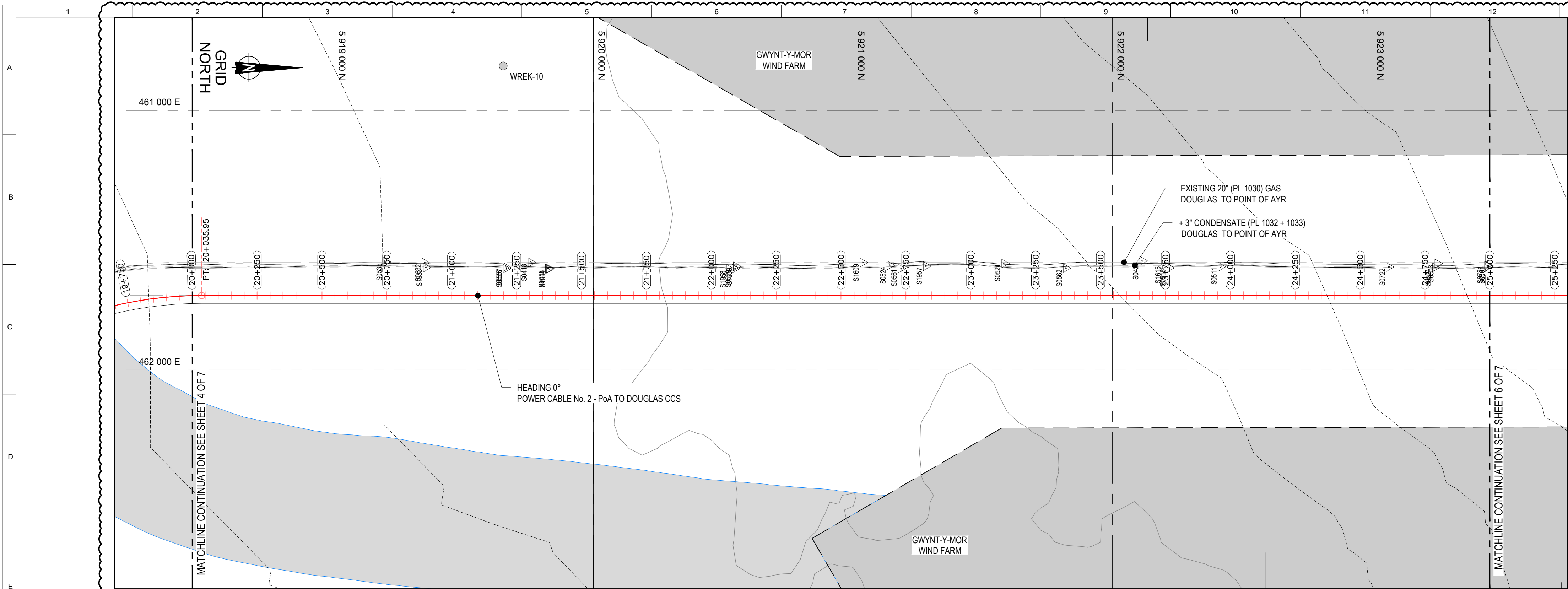


## GEODETIC PARAMETERS

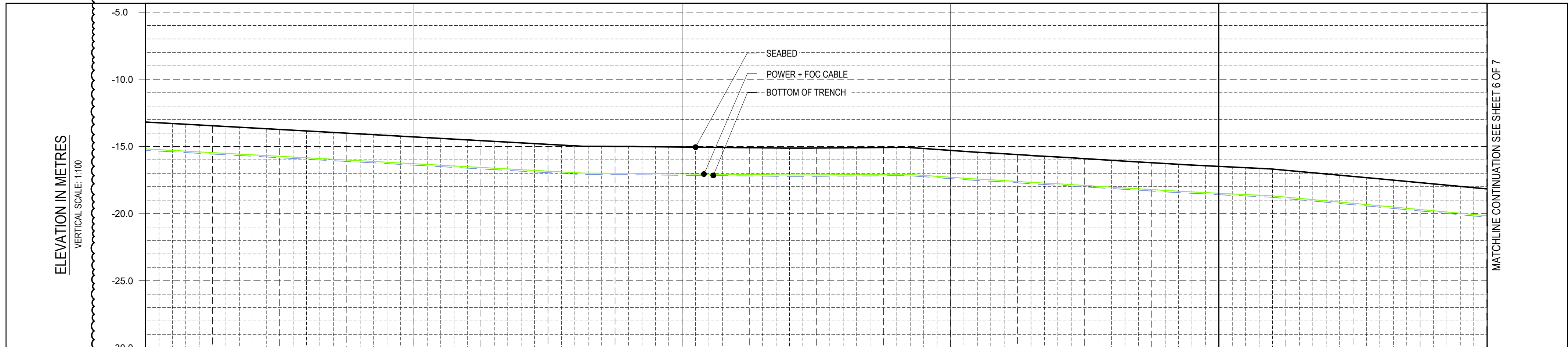
ELLIPSOID	: INTERNATIONAL 1924
DATUM	: EUROPEAN 1950 (ED50)
PROJECTION	: UNIVERSAL TRANSVERSE MERCATOR (UTM)
GRID ZONE	: 30N
CENTRAL MERIDIAN	: 3° E
LATITUDE OF ORIGIN	: 0° N
FALSE EASTING	: 500 000 m
FALSE NORTHING	: 0
SCALE FACTOR ON CL	: 0.9996

CD-FE	02	06.10.2021	RE-ISSUED FOR COMMENT	N.Z	E.R	S.G	
CD-FE	01	21.11.2021	ISSUED FINAL	N.Z	S.R	S.G	
CD-FE	00	31.10.2021	ISSUED FOR COMMENT	N.Z	S.R	S.G	
Validity	Rev.	Number	Date	Description	Prepared	Checked	Approved
Revision Index							
Company logo and business name				Company Document ID			
Facility and Sub Facility Name				Project Name	Scale	Job	Sheet of Sheets
DOUGLAS SUBSEA				LBA CCS Transport and Storage	1:10K @A1	N. JA0614	4 / 7
Document title				Document ID	Revised by N.	Plant Area	Plant Unit
OFFSHORE POWER CABLE No. 2 - PoA TO DOUGLAS				1025H0BSDG84141	NA	NA	NA
ALIGNMENT SHEET KP 15+000 - KP 19+000							





BATHYMETRY & SEABED FEATURES  
HORIZONTAL SCALE 1:10,000



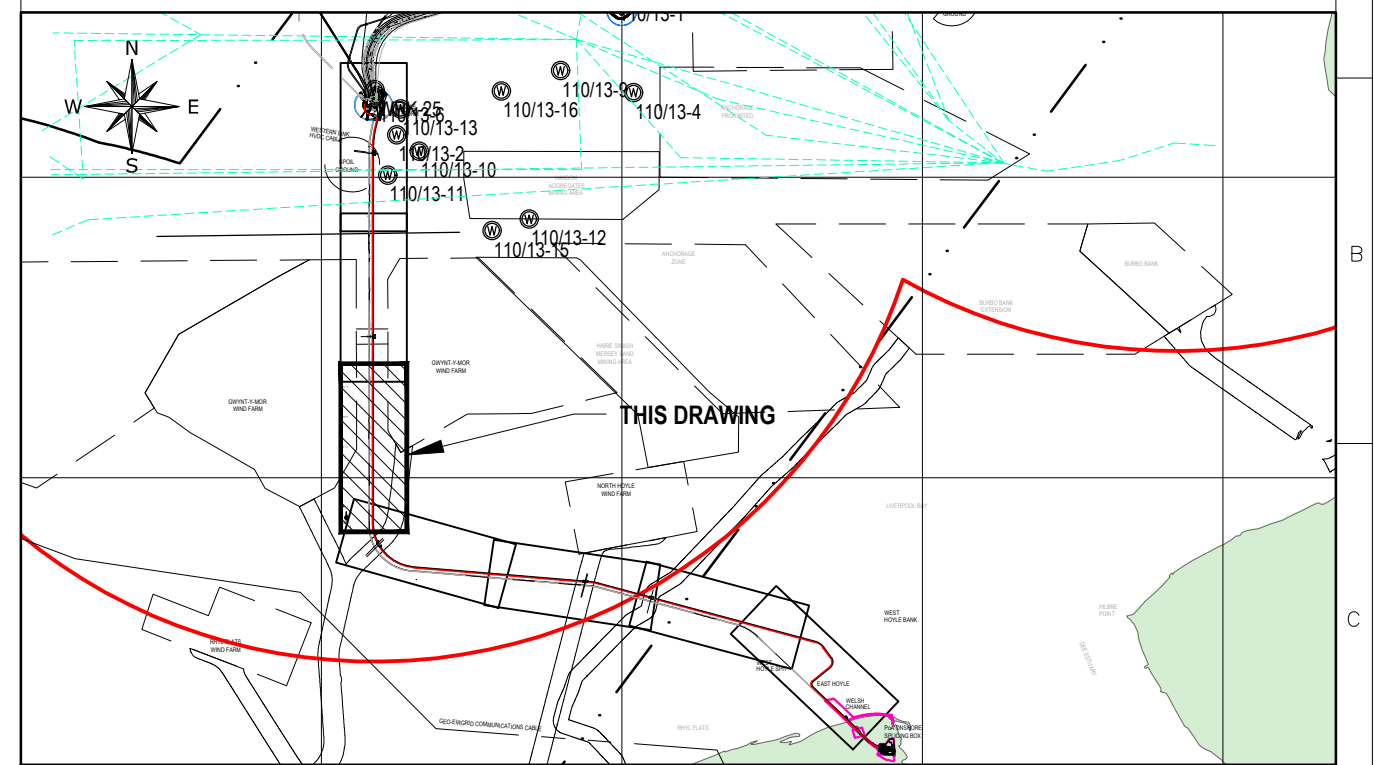
SEABED PROFILE  
HORIZONTAL SCALE 1:10,000

COMMENTS	20.0	21.0	22.0	23.0	24.0	25.0
KP ALONG ROUTE	20.0	21.0	22.0	23.0	24.0	25.0
SIZE / NAME / TAG	156.0mm O.D. / SINGLE ARMoured SUBMARINE POWER & TELECOMMUNICATION CABLE / 19/33(36)kV POWER CABLE + 48 CORE FIBRE OPTIC CABLE					
DETAILS	COPPER CONDUCTOR + XLPE + COPPER WIRES + COPPER FOIL BONDED TO PE SHEATH					
MIN BEND RADIUS (OPERATIONAL)	2m (HOLD-1)					
APPROX. WEIGHT (AIR / WATER)	47 kg/m / 30 kg/m (HOLD-2)					
TRENCH DETAILS	BURIED					
COVER REQUIREMENTS	2.0m MIN. COVER TOP OF POWER + FOC CABLE					
LAY TOLERANCE	±10.0m					
CROSSING DETAILS	NONE					
MINIMUM BREAKING LOAD	45.6 kNm² (HOLD-3)					
SOIL TYPE (TOP LAYER)	SAND					

DETAILS  
SCALE 1:10,000

REFERENCE DOCUMENTS	
NUMBER	TITLE
1025H0BSDG84104	NEW OFFSHORE POWER CABLE AND FIBRE OPTIC FIELD LAYOUT (OFFSHORE SECTION)
1025H0BSDN84112	OFFSHORE POWER CABLE APPROACH DRAWINGS

KEY PLAN



LEGEND

ABBREVIATIONS

KP	-	KILOMETRE POINT	DP	-	DOUGLAS PLATFORM
IP-XX	-	INTERSECTION POINT	HN	-	HAMILTON NORTH PLATFORM
TG-XX	-	TANGENT POINT OF BEND	LNX	-	LENNOX PLATFORM
TOP	-	TOP OF PIPE	HM	-	HAMILTON MAIN PLATFORM
BOP	-	BOTTOM OF PIPE	SHT	-	SHEET
FOC	-	FIBRE OPTIC CABLE	XX-PLX-01	-	LINE No - PIPELINE CROSSING - No.
NTS	-	NOT TO SCALE	XX-FLX-01	-	LINE No - FAULT LINE CROSSING - No.
OD	-	OUTSIDE DIAMETER	XX-FOX-01	-	LINE No - FOC / POWER CABLE CROSSING - No.
SP	-	START POINT	XX-UX-01	-	LINE No - UMBILICAL CROSSING - No.
EP	-	END POINT	XX-FEX-01	-	LINE No - FENCELINE CROSSING - No.
PC	-	POINT OF CURVATURE (ENTRY)	XX-RDX-01	-	LINE No - ROAD CROSSING - No.
PT	-	POINT OF TANGENT (EXIT)			

	EXISTING PROFILE.		SHIP WREK LOCATION AND ID NUMBER.
	PROPOSED PROFILE.		ABANDONED WELL LOCATION AND ID NUMBER.
	BOTTOM OF TRENCH PROFILE.		

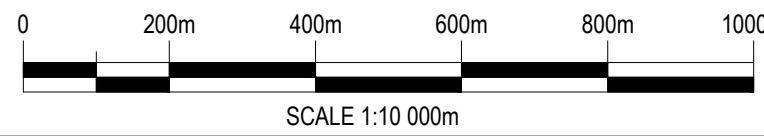
NOTES

- BATHYMETRY HAS BEEN DEVELOPED FROM AVAILABLE CONTOURS. BATHYMETRY TO BE CONFIRMED ONCE SURVEY HAS BEEN CONDUCTED.
- OBSTRUCTIONS AND GEOHAZARD INFORMATION ALONG SEABED CABLE CORRIDOR TO BE CONFIRMED. INFORMATION SHOWN IN THIS ALIGNMENT SHEET IS PRELIMINARY.
- FOR CABLE PROTECTION AND SEABED COVER REQUIREMENTS SEE OFFSHORE POWER CABLE PROTECTION REQUIREMENT DOC. No. 1025H0BSRV84107 AND OFFSHORE CABLES PRELIMINARY CROSSING DESIGN REPORT DOC No. 1025DSBSC284173.
- FOR POWER CABLE INSTALLATION REQUIREMENTS SEE POWER CABLE INSTALLATION SPECIFICATION DOC. No. 1025H0BSA84108.

HOLDS

- TO BE CONFIRMED.
- TO BE CONFIRMED.
- TO BE CONFIRMED.

(POINT OF AYR - DOUGLAS CCS) ROUTE CROSSING TABLE - CABLE #2 (Offshore Overall length = 34.46 Km)				
Tag No.	KP	Eastings	Northings	Description of Crossing
RDX-1	0+274	477686.70	5911758.88	ROAD CROSSING (ONSHORE)
PoAX-1	9+842	470974.84	5916002.39	BURBO BANK Wind Farm
PoAX-2	12+089	468795.03	5916535.10	NORTH HOYLE Wind Farm (Export Cable)
PoAX-3	12+108	468776.17	5916536.68	NORTH HOYLE Wind Farm (Export Cable)
PoAX-4	19+276	461904.20	5917763.30	GWYNT-Y-MOR Wind Farm (Export Cable)
PoAX-5	19+338	461875.07	5917817.57	GWYNT-Y-MOR Wind Farm (Export Cable)
PoAX-6	26+248	461713.35	5924702.50	GWYNT-Y-MOR Wind Farm (Inter Array Cable)
PoAX-7	32+333	461713.35	5930787.10	WESTERN LINK HVDC CABLES - POLE 1
PoAX-8	32+364	461713.35	5930818.38	WESTERN LINK HVDC CABLES - POLE 2
PoAX-9	33+671	461757.62	5932038.30	EXISTING 2 x 3" CONDENSATE (PL 1032 + 1033) TO PoA
PoAX-10	33+682	461747.58	5932042.82	EXISTING 20" GAS (PL 1030) TO PoA



GEODETIC PARAMETERS

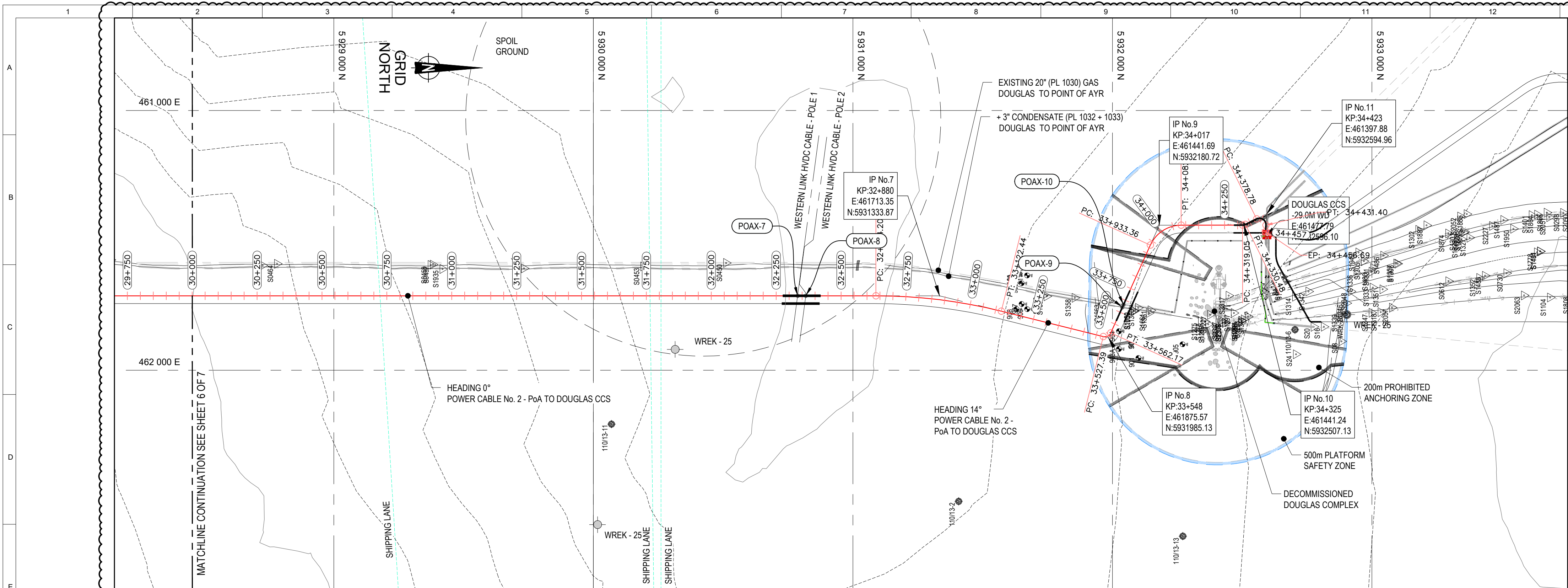
ELLIPSOID	: INTERNATIONAL 1924
DATUM	: EUROPEAN 1950 (ED50)
PROJECTION	: UNIVERSAL TRANSVERSE MERCATOR (UTM)
GRID ZONE	: 30N
CENTRAL MERIDIAN	: 3° E
LATITUDE OF ORIGIN	: 0° N
FALSE EASTING	: 500 000 m
FALSE NORTHING	: 0
SCALE FACTOR ON CL	: 0.9996

CD-FE	02	06.10.2021	RE-ASSUED FOR COMMENT	N.Z	E.R	S.G	
CD-FE	01	21.11.2022	ISSUED FINAL	N.Z	S.R	S.G	
CD-FE	00	31.10.2022	ISSUED FOR COMMENT	N.Z	S.R	S.G	
Validity	Rev.	Number	Date	Description	Prepared	Checked	Approved
Revision Index							
Company logo and business name				Company Document ID			
				1025H0BSDG84141			
Facility and Sub Facility Name				Job: N. JA0614			
DOUGLAS SUBSEA				Scale			
				1:10K @A1			
DOUGLAS SUBSEA				Sheet of Sheets			
				5 / 7			
Document title				Revised by N.			
OFFSHORE POWER CABLE No. 2 - PoA TO DOUGLAS CCS				Plant Unit			
ALIGNMENT SHEET KP 20+000 - KP 25+000				NA			

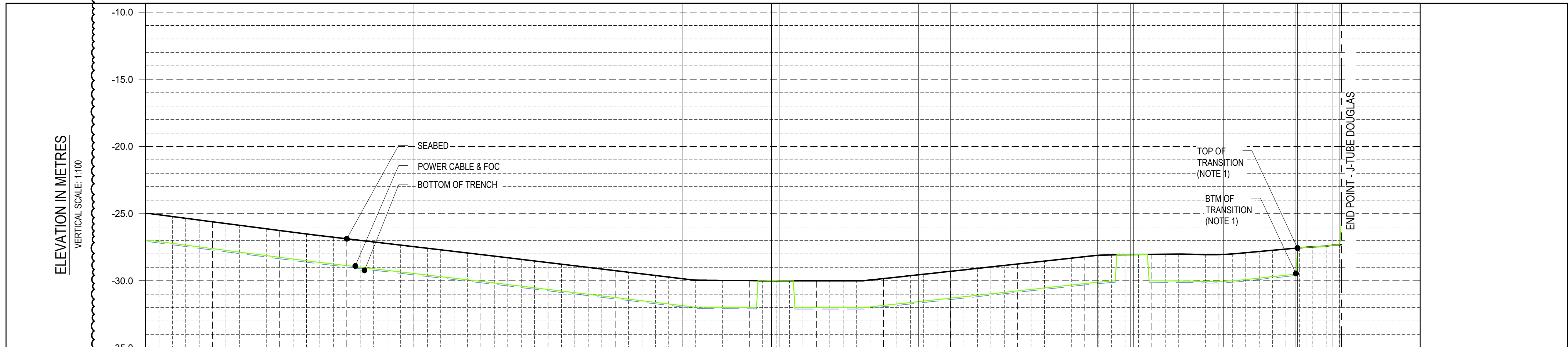








BATHYMETRY & SEABED FEATURES  
HORIZONTAL SCALE 1:10,000



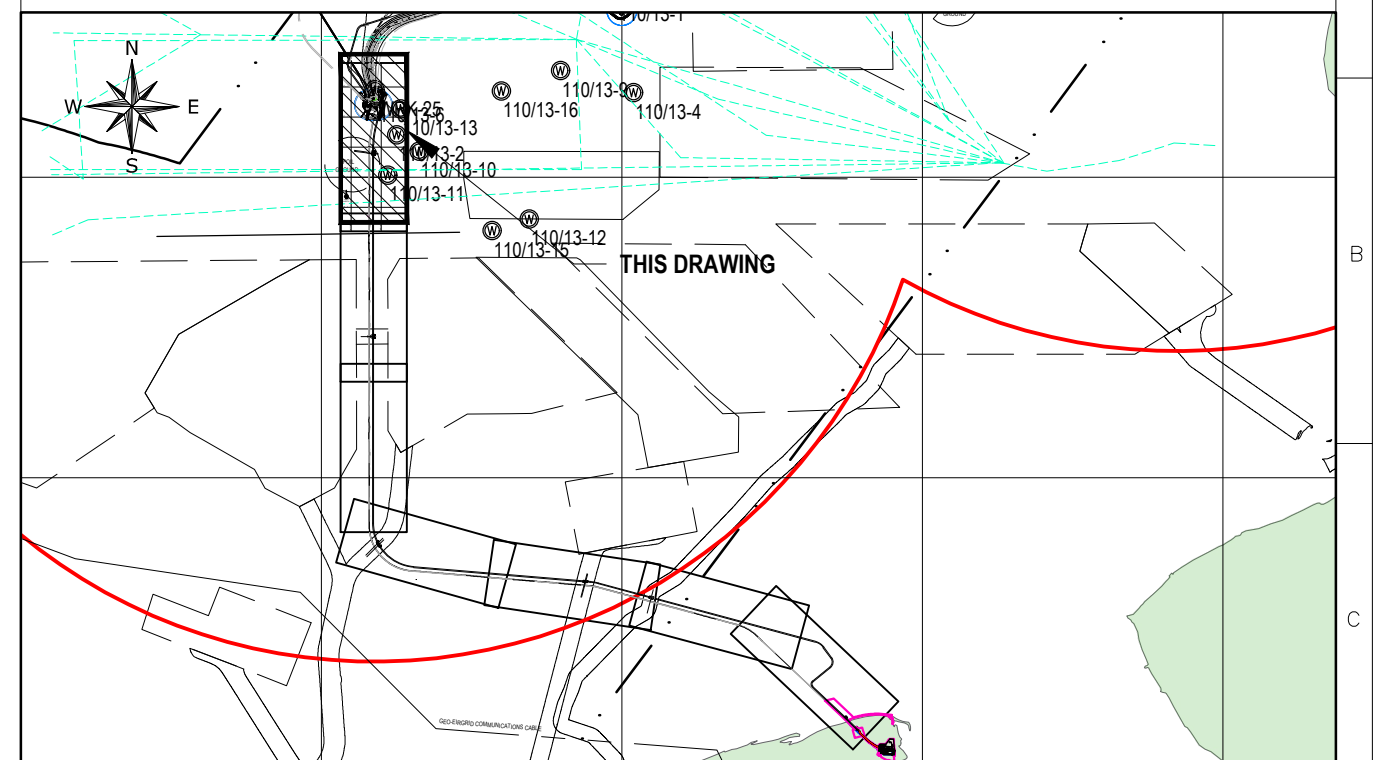
SEABED PROFILE  
HORIZONTAL SCALE 1:10,000

COMMENTS	30.0	31.0	32.0	32.33	32.36	32.88	33.0	33.55	33.67	33.68	34.01	34.33	34.43	34.456
KP ALONG ROUTE	30.0	31.0	32.0	32.33	32.36	32.88	33.0	33.55	33.67	33.68	34.01	34.33	34.43	34.456
SIZE / NAME / TAG	156.0mm O.D. / SINGLE ARMoured SUBMARINE POWER & TELECOMMUNICATION CABLE / 19/33/36kV POWER CABLE + 48 CORE FIBRE OPTIC CABLE													
DETAILS	COPPER CONDUCTOR + XLPE + COPPER WIRES + COPPER FOIL BONDED TO PE SHEATH													
MIN BEND RADIUS (OPERATIONAL)	2m (HOLD-1)													
APPROX. WEIGHT (AIR / WATER)	47 kg/m / 30 kg/m (HOLD-2)													
TRENCH DETAILS	BURIED													
COVER REQUIREMENTS	2.0m MIN. COVER TOP OF POWER + FOC CABLE													
LAY TOLERANCE	±1.5m													
CROSSING DETAILS	NONE													
MINIMUM BREAKING LOAD	45.6 kNm <sup>2</sup> (HOLD-3)													
SOIL TYPE (TOP LAYER)	SAND													

DETAILS  
SCALE 1:10,000

REFERENCE DOCUMENTS	
NUMBER	TITLE
1025H0BSDG84104	NEW OFFSHORE POWER CABLE AND FIBRE OPTIC FIELD LAYOUT (OFFSHORE SECTION)
1025H0BSDN84112	OFFSHORE POWER CABLE APPROACH DRAWINGS
1025H0BSUG84177 & 84101	TYPICAL CROSSING GA DRAWING FOR POWER CABLE FROM PoA TO DOUGLAS CCS (PoAX-7, 8 & 10)

## KEY PLAN



## LEGEND

### ABBREVIATIONS

KP	- KILOMETRE POINT	DP	- DOUGLAS PLATFORM
IP-XX	- INTERSECTION POINT	HN	- HAMILTON NORTH PLATFORM
TG-XX	- TANGENT POINT OF BEND	LNX	- LENNOX PLATFORM
TOP	- TOP OF PIPE	HM	- HAMILTON MAIN PLATFORM
BOP	- BOTTOM OF PIPE	SHT	- SHEET
FOC	- FIBRE OPTIC CABLE	XX-PLX-01	- LINE No - PIPELINE CROSSING - No.
NTS	- NOT TO SCALE	XX-FLX-01	- LINE No - FAULT LINE CROSSING - No.
OD	- OUTSIDE DIAMETER	XX-FOX-01	- LINE No - FOC / POWER CABLE CROSSING - No.
SP	- START POINT	XX-UX-01	- LINE No - UMBILICAL CROSSING - No.
EP	- END POINT	XX-FEX-01	- LINE No - FENCELINE CROSSING - No.
PC	- POINT OF CURVATURE (ENTRY)	XX-RDX-01	- LINE No - ROAD CROSSING - No.
PT	- POINT OF TANGENT (EXIT)		

	EXISTING PROFILE.		SHIP WRECK LOCATION AND ID NUMBER.
	PROPOSED PROFILE.		ABANDONED WELL LOCATION AND ID NUMBER.
	BOTTOM OF TRENCH PROFILE.		

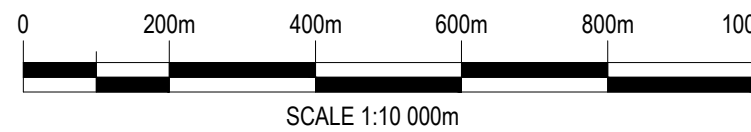
## NOTES

- TRENCH TRANSITION HORIZONTAL LENGTH OF 6m SLOPE 3:1 (BOTTOM OF TRENCH = KP 34+287, TOP OF TRENCH = KP 34.283).
- BATHYMETRY HAS BEEN DEVELOPED FROM AVAILABLE CONTOURS. BATHYMETRY TO BE CONFIRMED ONCE SURVEY HAS BEEN CONDUCTED.
- OBSTRUCTIONS AND GEOHAZARD INFORMATION ALONG SEABED CABLE CORRIDOR TO BE CONFIRMED. INFORMATION SHOWN IN THIS ALIGNMENT SHEET IS PRELIMINARY.
- FOR CABLE PROTECTION AND SEABED COVER REQUIREMENTS SEE OFFSHORE POWER CABLE PROTECTION REQUIREMENT DOC. No. 1025H0BSRV84107 AND OFFSHORE CABLES PRELIMINARY CROSSING DESIGN REPORT DOC. No. 1025H0BSUG84177.
- FOR POWER CABLE INSTALLATION REQUIREMENTS SEE POWER CABLE INSTALLATION SPECIFICATION DOC. No. 1025H0BSSA84108.

## HOLDS

- TO BE CONFIRMED.
- TO BE CONFIRMED.
- TO BE CONFIRMED.

(POINT OF AYR - DOUGLAS CCS) ROUTE CROSSING TABLE - CABLE #2 (Offshore Overall length = 34.46 Km)				
Tag No.	KP	Eastings	Northing	Description of Crossing
RDX-1	0+274	477686.70	5911758.88	ROAD CROSSING (ONSHORE)
PoAX-1	9+842	470974.84	5916002.39	BURBO BANK Wind Farm
PoAX-2	12+089	468795.03	5916535.10	NORTH HOYLE Wind Farm (Export Cable)
PoAX-3	12+108	468776.17	5916536.68	NORTH HOYLE Wind Farm (Export Cable)
PoAX-4	19+276	461904.20	5917763.30	GWYNT-Y-MOR Wind Farm (Export Cable)
PoAX-5	19+338	461875.07	5917817.57	GWYNT-Y-MOR Wind Farm (Export Cable)
PoAX-6	26+248	461713.35	5924702.50	GWYNT-Y-MOR Wind Farm (Inter Array Cable)
PoAX-7	32+333	461713.35	5930787.10	WESTERN LINK HVDC CABLES - POLE 1
PoAX-8	32+364	461713.35	5930818.38	WESTERN LINK HVDC CABLES - POLE 2
PoAX-9	33+671	461757.62	5932038.30	EXISTING 2 x 3" CONDENSATE (PL 1032 + 1033) TO PoA
PoAX-10	33+682	461747.58	5932042.82	EXISTING 20" GAS (PL 1030) TO PoA



## GEODETIC PARAMETERS

ELLIPSOID	: INTERNATIONAL 1924
DATUM	: EUROPEAN 1950 (ED50)
PROJECTION	: UNIVERSAL TRANSVERSE MERCATOR (UTM)
GRID ZONE	: 30N
CENTRAL MERIDIAN	: 3° E
LATITUDE OF ORIGIN	: 0° N
FALSE EASTING	: 500 000 m
FALSE NORTHING	: 0
SCALE FACTOR AT ORIGIN	: 0.9996

CD-FE	02	06.10.2023	RE-ASSUED FOR COMMENT	N.Z	E.R	S.G	
CD-FE	01	21.11.2022	ISSUED FINAL	N.Z	S.R	S.G	
CD-FE	00	31.10.2022	ISSUED FOR COMMENT	N.Z	S.R	S.G	
Validity	Rev.	Number	Date	Description	Prepared	Checked	Approved
Revision Index							
Company logo and business name				Company Document ID			
Facility and Sub Facility Name				Project Name	Scale	Sheet of Sheets	
DOUGLAS SUBSEA				LBA CCS Transport and Storage	1:10K @A1	7 / 7	

## OFFSHORE POWER CABLE No. 2 - PoA TO DOUGLAS CCS ALIGNMENT SHEET KP 30+000 - KP 34+456