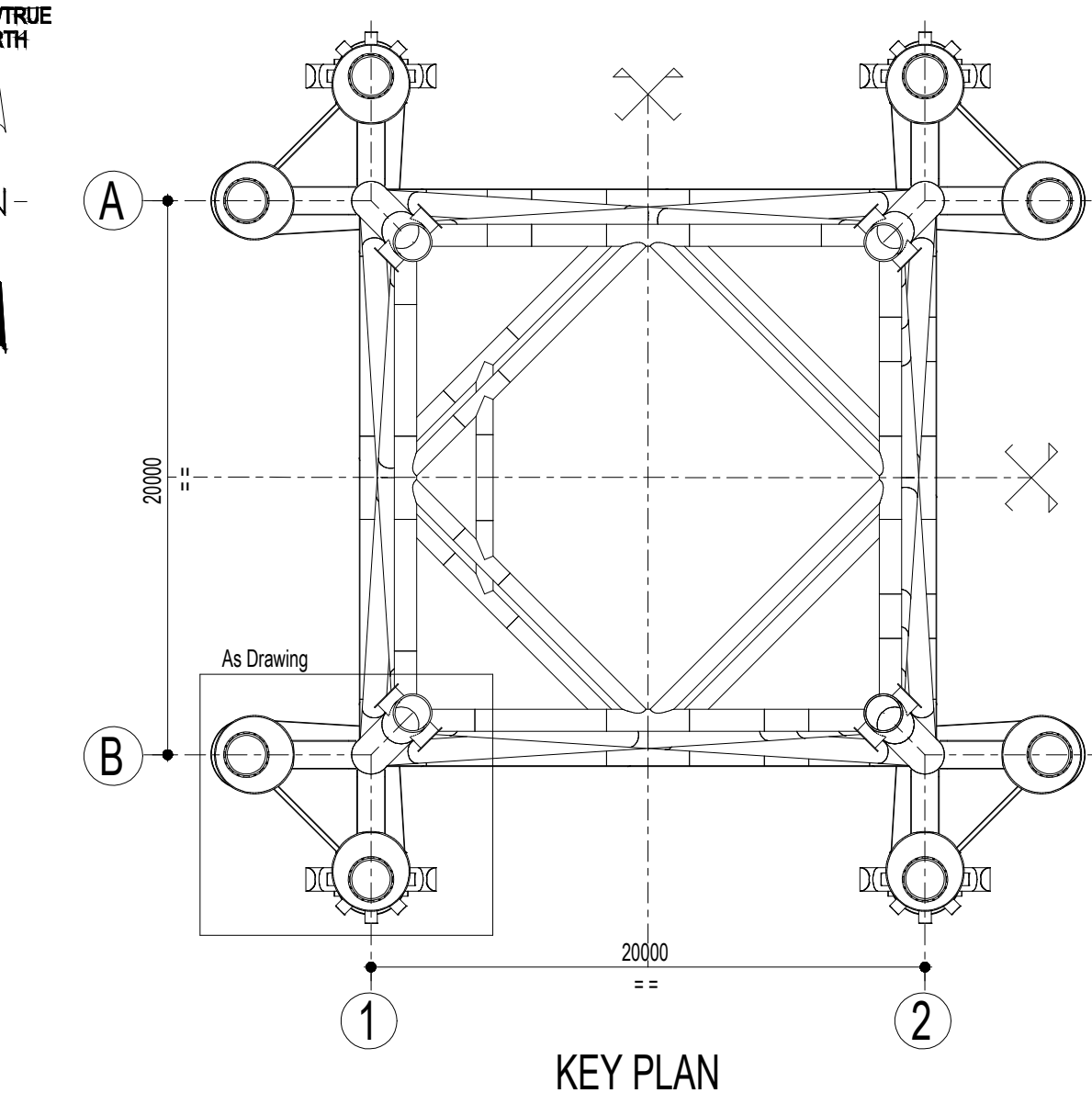



- NOTES :
- 1) ALL DIMENSIONS ARE IN MILLIMETERS UNLESS NOTED OTHERWISE (U.N.O.).
 - 2) ALL ELEVATIONS ARE REFERRED TO ± 0.00 L.A.T.
 - 3) ALL TUBULAR MEMBER SIZE ARE OUTSIDE DIAMETER x WALL THICKNESS.
(O.D. * W.T.).
 - 4) UNLESS OTHERWISE INDICATED ALL WELDS ARE FULL PENETRATION.
 - 5) THE OFFSET OF THE LOWER SHIM PLATE TO THE KEEPER PLATE TO BE 28mm MIN.
TO BE VERIFIED AT EACH SHIM PLATE BEFORE INSTALLATION OF THE GROUT SEAL.



CD-FE	01	25.09.2023	FINAL ISSUE				EPIK TEAM	A. WICKSONO	L. VIGORETTI	
CD-FE	00	08.09.2023	ISSUED FOR COMMENT				EPIK TEAM	A. WICKSONO	L. VIGORETTI	
Revision Index		Date	Description				Prepared	Checked	Approved	Approved Epi UK
Company logo and business name							Company Document ID			
							105600BODE90137			
							Job N. J0014			
Facility and Sub Facility Name			Project Name				Scale		Sheet of Sheets	
DOUGLAS CCS			LBA CCS Transport and Storage				1 : 50		2 OF 2	
DOUGLAS CCS GENERAL										
Document Title							Supervised by N.			
DOUGLAS CCS PLATFORM JACKET PILE SLEEVES ASSEMBLY AND DETAILS							Supervised by N.			
							Plant Area		Plant Unit	
							n.a.		n.a.	