

NUMBER	TITLE






NOTES :

1. ALL DIMENSIONS AND LEVELS ARE IN MILLIMETRES UNLESS OTHERWISE NOTED.
2. PLANT CO-ORDINATE (N 100000, E 100000) IS EQUIVALENT TO GEOGRAPHICAL CO-ORDINATE (N 5924096.00 E 453108.00) AND IS DEFINED WITH RESPECT TO TRUE NORTH. ALL OTHER CO-ORDINATES IN THE PLATFORM ARE DEFINED AND READ WITH RESPECT TO PLANT NORTH.
2. POWER FROM SHORE WILL BE AVAILABLE FROM POINT OF AYR (50K).
3. MUSTER SHELTER WITH PROVISION FOR OVERNIGHT STAY FOR APPROX. 8 PEOPLE FOR NEW SHELTER LAYOUT SEE DRAWING NO. 1023D0B06E9840.
4. PIPING LAYOUT SHOWN IS INDICATIVE ONLY AND SUBJECT TO CHANGE.
5. FOR ALL ELECTRICAL AND INSTRUMENT EQUIPMENT LAYOUT DRAWINGS TO BE CONFIRMED.
6. LIFE BOAT, NEW RISERS, 'J' TUBES AND CPM CAISSON LOCATION TO BE CONFIRMED.
7. COORDINATES FOR DOUGLAS CCS PLATFORM TO BE CONFIRMED.
8. DELETED.
9. FOR ALL LER DRAWINGS REFER TO ELECTRICAL DRAWING NO. 105600BEDP47302 AND INSTRUMENT DRAWING NO. 105600BIDL57153.
10. ALL RISERS, J-TUBES AND CAISSONS ARE INSTALLED IN THE YARD. STAGE 4 PIPELINES ARE FUTURE.
11. ALL STRUCTURES AND EQUIPMENT ARE NEW UNLESS OTHERWISE NOTED.
12. ELEVATIONS ARE REFERRED TO LAT AND AT 20400MM ELEVATION IS MAXIMUM WAVE CREST PLUS MARGIN ACCORDING TO ISO 15902.
13. POSITION OF L.O.S DISH TO BE CONFIRMED AFTER RESULTS OF L.O.S SURVEY.
14. POWER AND OPTICAL SUBMARINE TOPSIDE TERMINATION JB SIZES TO BE CONFIRMED.

HOLDS:

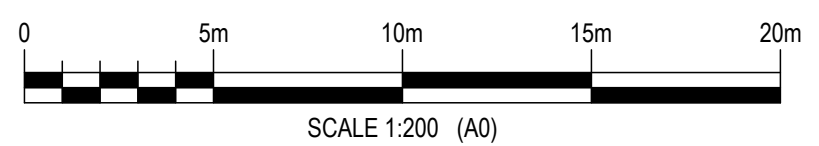
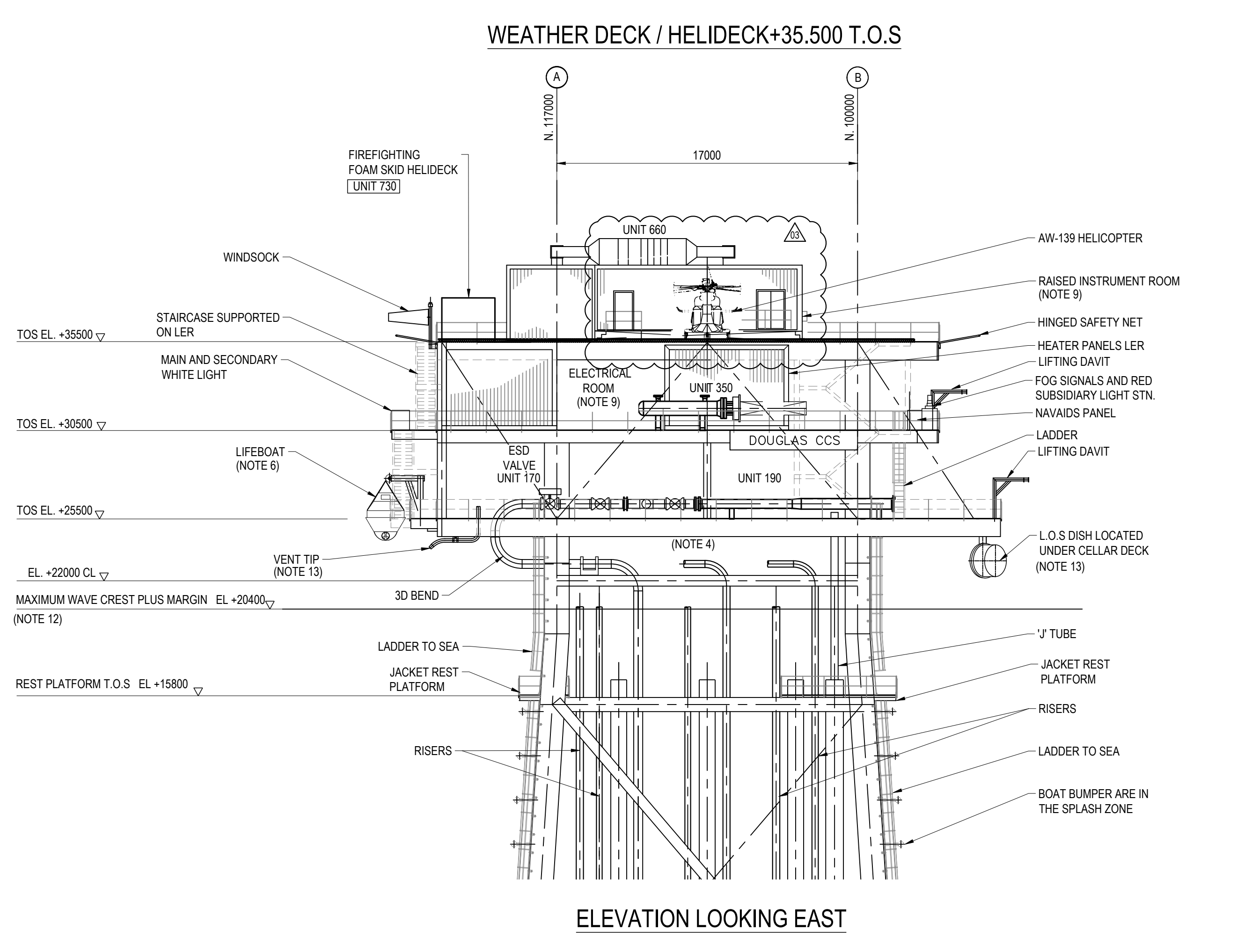
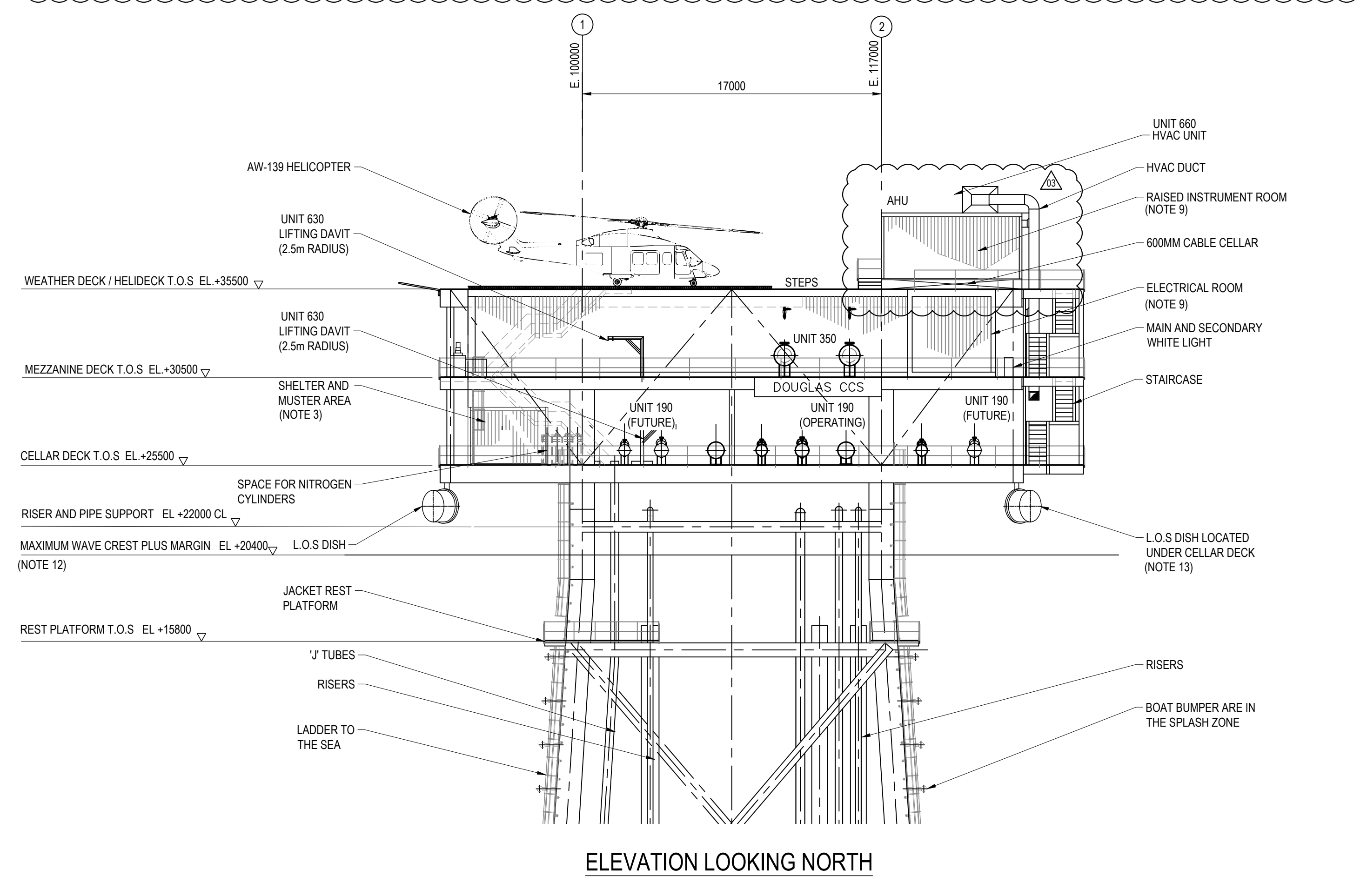
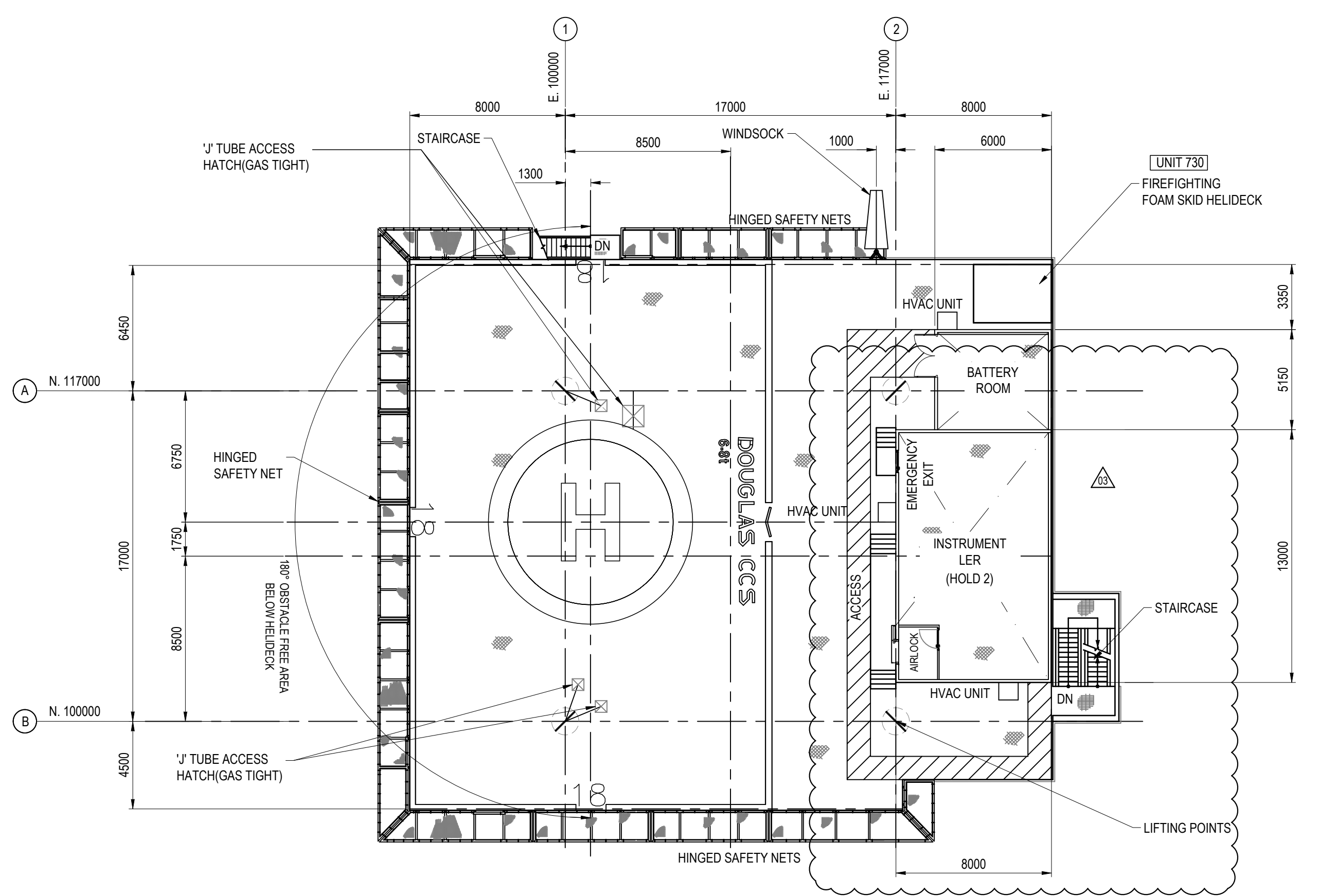
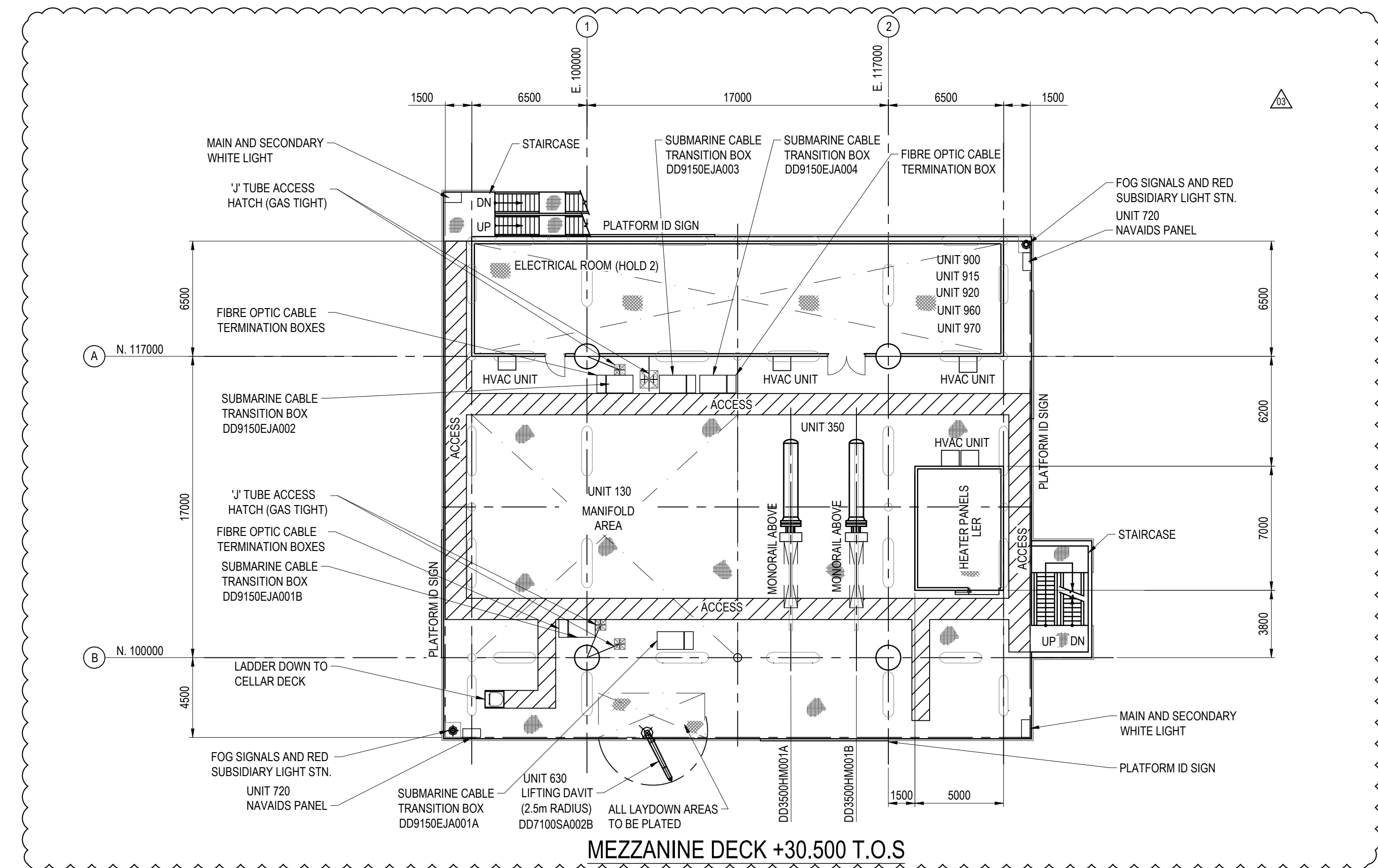
1. DELETED
2. DELETED
3. DELETED
4. DELETED
5. DELETED
6. DELETED

LEGEND:

	PLATE FLOORING
	OPEN GRATE FLOORING
	SAFETY NETTING
	ESCAPE WAY
	FUTURE

LIST OF UNITS	
UNIT NO.	DESCRIPTION
UNIT 130	MANFOLD
UNIT 170	GAS PIPELINE/REALMES
UNIT 190	PIG LAUNCHERS / RECEIVERS
UNIT 230	VENT AND RELIEF SYSTEM
UNIT 300	GAS HEATING
UNIT 600	INERT GAS
UNIT 630	HANDLING AND LIFTING EQUIPMENT
UNIT 660	HVAC UNITS
UNIT 710	ESCAPE AND PERSONNEL SAFETY
UNIT 720	NAVIGATE
UNIT 730	WATER FOAM FIREFIGHTING SYSTEM
UNIT 900	UNINTERRUPTABLE POWER SUPPLY SYSTEM
UNIT 915	MAIN ELECTRIC POWER DISTRIBUTION HIGH VOLTAGE > 20KV
UNIT 920	MAIN ELECTRIC POWER DISTRIBUTION > 1000 V
UNIT 960	TELECOMMUNICATIONS
UNIT 970	CONTROL SYSTEM

EQUIPMENT LIST			ELEVATION
EQUIPMENT NO.	DESCRIPTION		
DD190VL001	PL1039 20" PIPELINE PLUG LAUNCHER	-	-
DD190VL002	PL1041 14" PIPELINE PLUG LAUNCHER	-	-
DD190VL003	PL1033 16" PIPELINE PLUG LAUNCHER	-	-
DD190VL005	PL10304 12" PIPELINE PLUG LAUNCHER	-	-
DD190V0001	P0008 100' 20" PIPELINE PLUG RECEIVER	-	-
DD190VL011	10" PIPELINE PLUG LAUNCHER TO HAMILTON NORTH MAN (STAGE 4 FUTURE)	-	-
DD190VL012	12" PIPELINE PLUG LAUNCHER TO HAMILTON NORTH (STAGE 4 FUTURE)	-	-
DD190VL103	16" PIPELINE PLUG LAUNCHER TO LENNOX (STAGE 4 FUTURE)	-	-
DD300X001	VENT PACKAGE	-	-
DD300HM000A	DOUGLAS ELECTRIC VALVE	-	-
DD300HM002AB	DOUGLAS TEMPSC DAVITS	-	-
DD7105A003	DOUGLAS ESCAPE CHUTE LIFE BOAT	-	-
DD7380A001	DOUGLAS PLATFORM FRESHWATER FOAM PACKAGING	-	-
DD79150EJ001S	DOUGLAS SUBMARINE CABLE TRANSITION BOX	-	-

[illegible]