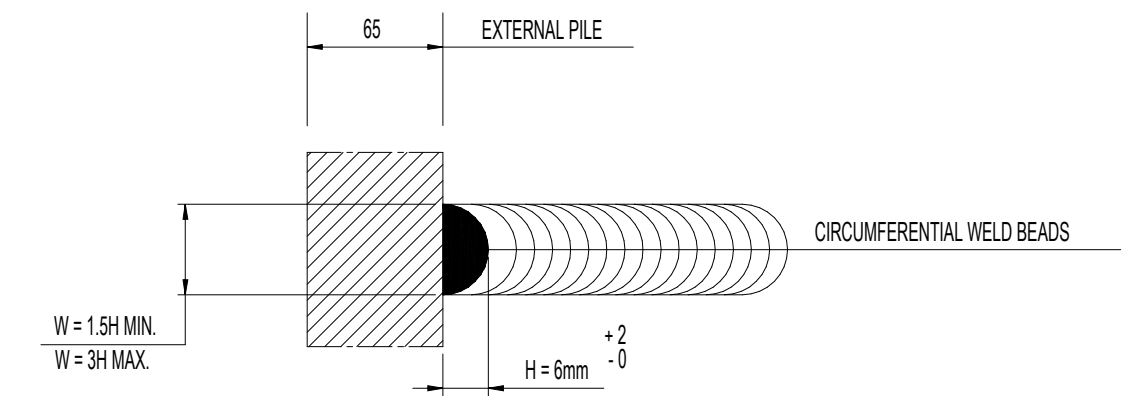


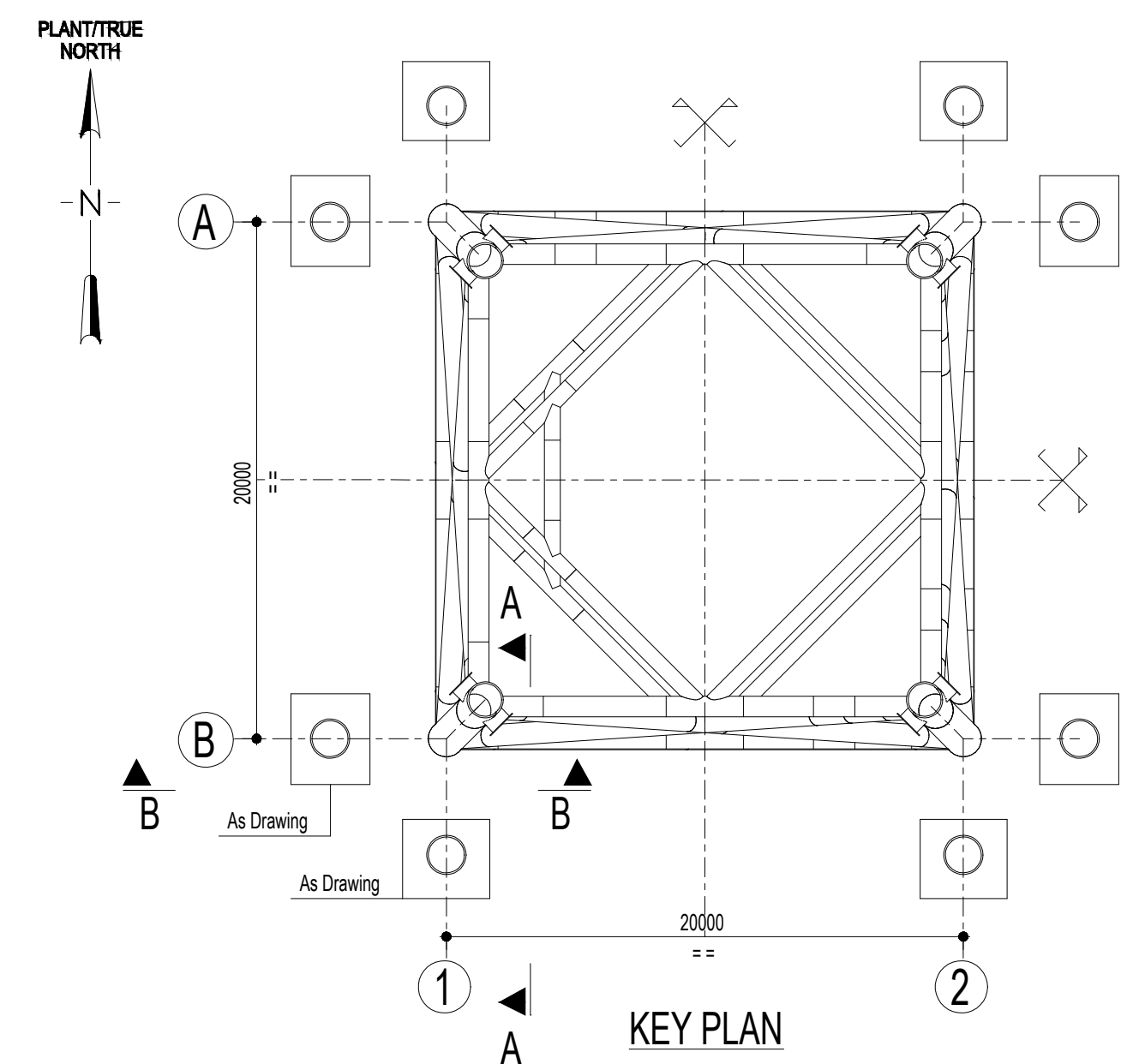
REFERENCE DOCUMENTS	
NUMBER	TITLE
10560180DE0130	DOUGLAS CCS PLATFORM - JACKET - DRAWING LIST AND GENERAL NOTES



NOTES :

- 1) ALL DIMENSIONS ARE IN MILLIMETERS UNLESS NOTED OTHERWISE (U.N.O.).
- 2) ALL ELEVATIONS ARE REFERRED TO ± 0.00 L.A.T.
- 3) ALL TUBULAR MEMBER SIZE ARE OUTSIDE DIAMETER x WALL THICKNESS.
(O.D. * W.T.).
- 4) UNLESS OTHERWISE INDICATED ALL WELDS ARE FULL PENETRATION.
- 5) WELD BEAD LOCATIONS TO BE ADJUSTED TO SUIT POSITIONS OF CIRCUMFERENTIAL WELDS, BUT MAXIMUM SPACING NOT TO EXCEED THAT SPECIFIED.



TYPICAL WELD BEAD DETAIL
SCALE 1:2
(See Note 5)



CO-Fe	01	25.09.2023	FINAL ISSUE		EPUK TEAM	A. WICKSONO	L. VIGLIOTTI		
CO-Fe	00	08.09.2023	ISSUED FOR COMMENT		EPUK TEAM	A. WICKSONO	L. VIGLIOTTI		
Validity Status	Rev. Number								
Revision index		Date	Description			Prepared	Checked	Approved	Approved in UK
Company logo and business name						Company Document ID 105600B0DE90136			
 						Job. n. J00514 Scale 1 : 50 Sheet of Sheets 1 OF 1			
Facility and Sub Facility Name DOUGLAS CCS DOUGLAS CCS GENERAL			Project Name LBA CCS Transport and Storage			Superseded N. Superseded by N.			
Document Title DOUGLAS CCS PLATFORM JACKET FOUNDATION PILES ASSEMBLY AND DETAILS						Plant Area n.a.		Plant Unit n.a.	