

MONA OFFSHORE WIND PROJECT

Offshore Historic Environment Plan

Document Reference: MOCNS-J3303-RPS-10016

Document Reference: B12

APFP Regulations: 5(2)(m)

February 2024

F01



Image of an offshore wind farm

MONA OFFSHORE WIND PROJECT

Document status

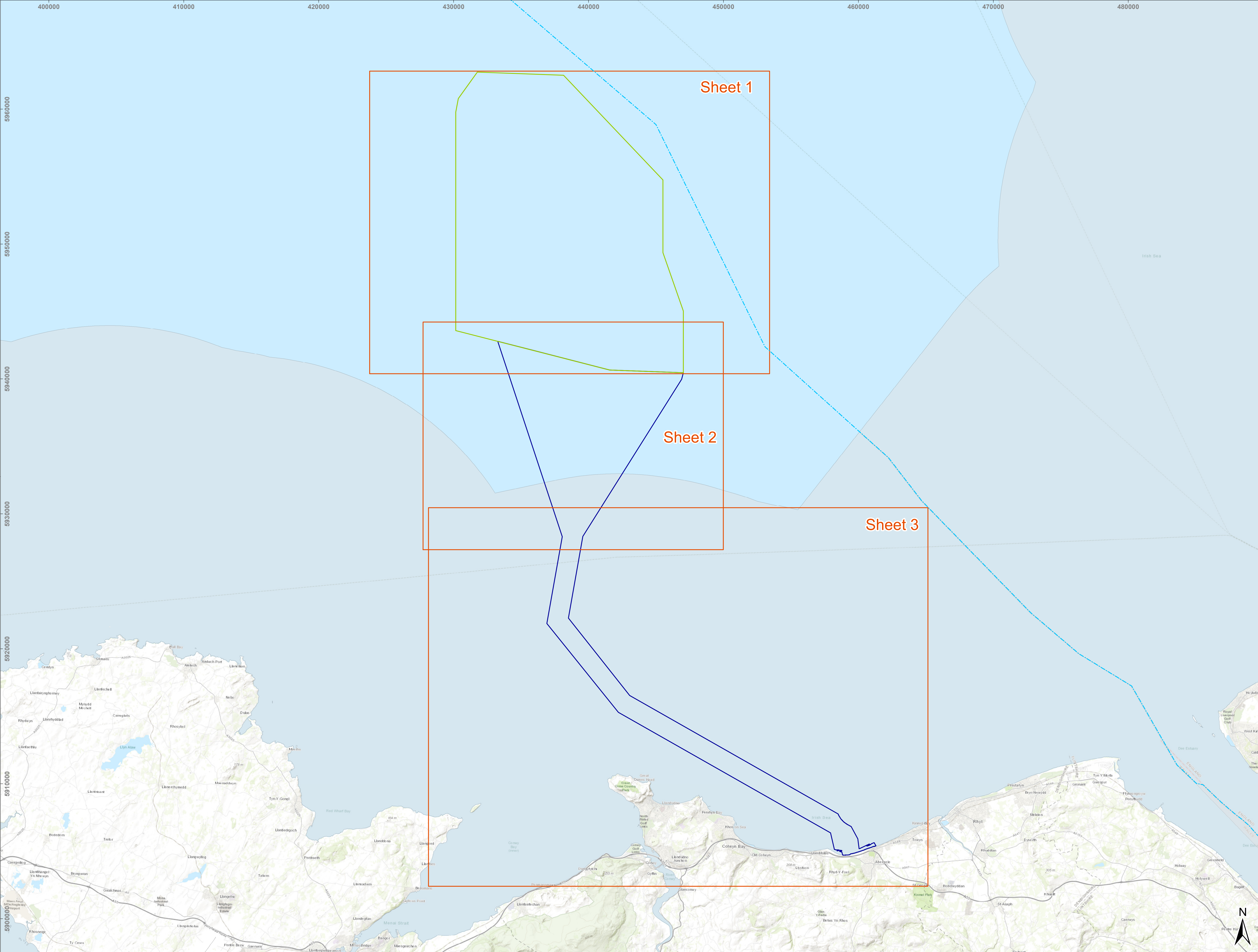
Version	Purpose of document	Authored by	Reviewed by	Approved by	Review date
F01	Application	RPS	Mona Offshore Wind Ltd.	Mona Offshore Wind Ltd.	February 2024

Prepared by:

RPS

Prepared for:

Mona Offshore Wind Ltd.



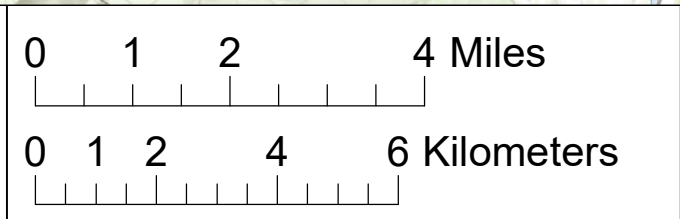
- Legend**
- Mona Array Area
BPGBR-MONA-DAT0114
 - Mona Offshore Cable
Corridor and Access Areas
MO_PRJ_BP_0207_Rev06
 - Map Extents
 - Jurisdictional Boundary
 - Inshore Waters



Drawing Number:
RPSE-MN-ES-MISC-104-03

Project Name:
MONA OFFSHORE WIND PROJECT

Drawing Title:
OFFSHORE HISTORIC ENVIRONMENT PLAN - INDEX SHEET

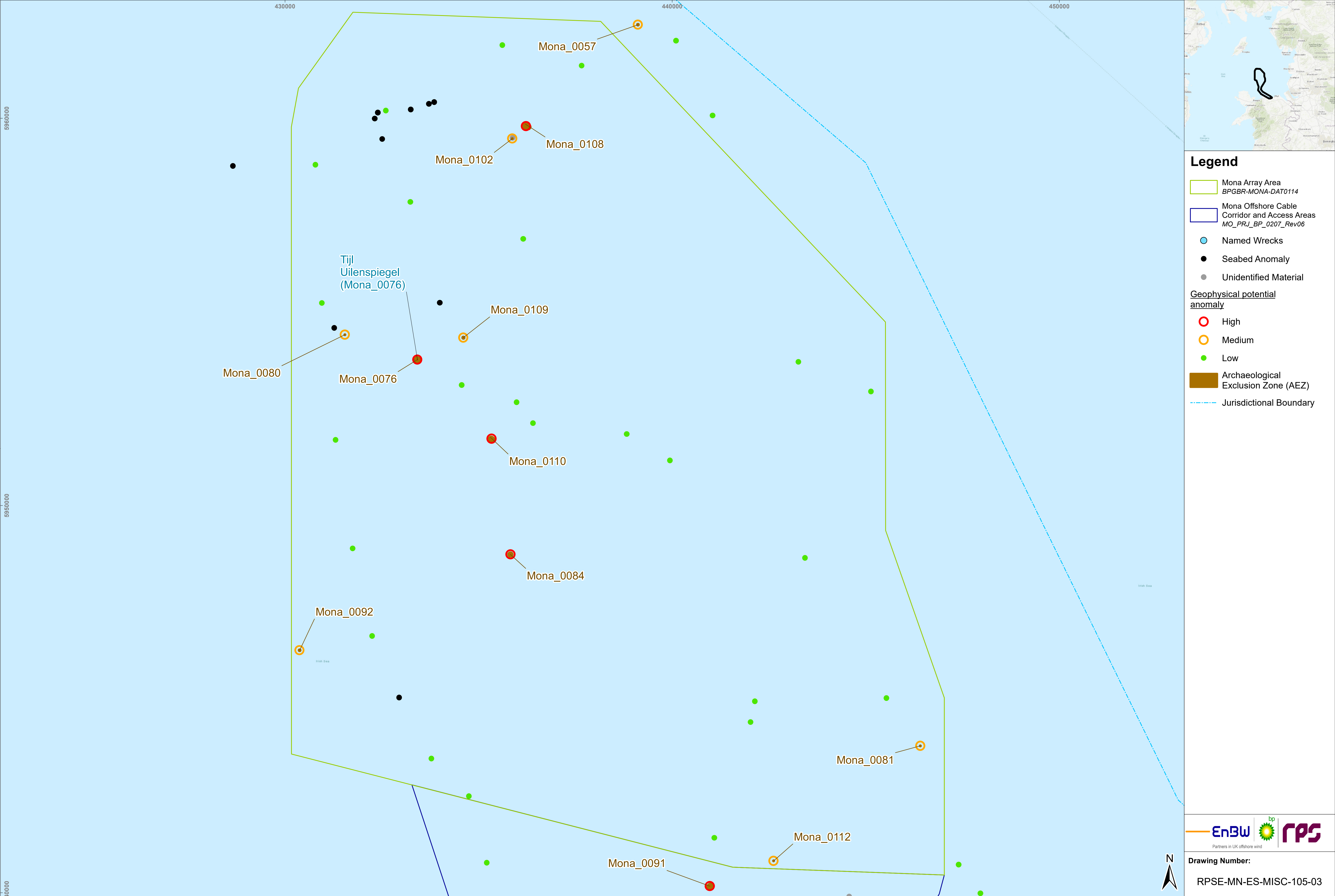


Geodetic Information:
Datum: ETRS 1989
Projection: ETRS 1989 UTM Zone 30N
Scale@ A1: 1:125,000

Data Sources: Client, Natural Resources Wales, NatureScot. MMO, Marine Regions.org

Service Layer Credits: Sources: Esri, HERE, Garmin, Intermap, increment P Corp., GEBCO, USGS, FAO, NPS, NRCAN, GeoBase, IGN, Kadaster NL, Ordnance Survey, Esri Japan, METI, Esri China (Hong Kong), (c)

VER	DATE	DETAILS	BY	CHECK
00	02/08/23	Initial Issue	NG	JC
03	29/09/23	Revision	NG	SS



Legend

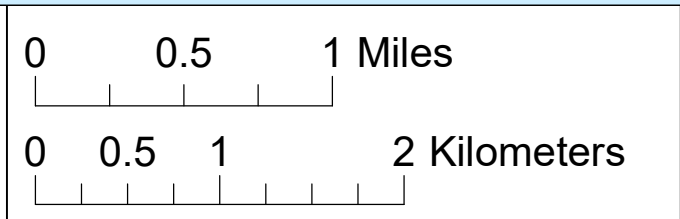
- Mona Array Area
BPGBR-MONA-DAT0114
- Mona Offshore Cable
Corridor and Access Areas
MO_PRJ_BP_0207_Rev06
- Named Wrecks
- Seabed Anomaly
- Unidentified Material
- Geophysical potential
anomaly
 - High
 - Medium
 - Low
- Archaeological
Exclusion Zone (AEZ)
- Jurisdictional Boundary



Drawing Number:
RPSE-MN-ES-MISC-105-03

Project Name:
MONA OFFSHORE WIND PROJECT

Drawing Title:
OFFSHORE HISTORIC ENVIRONMENT PLAN -
SHEET 1

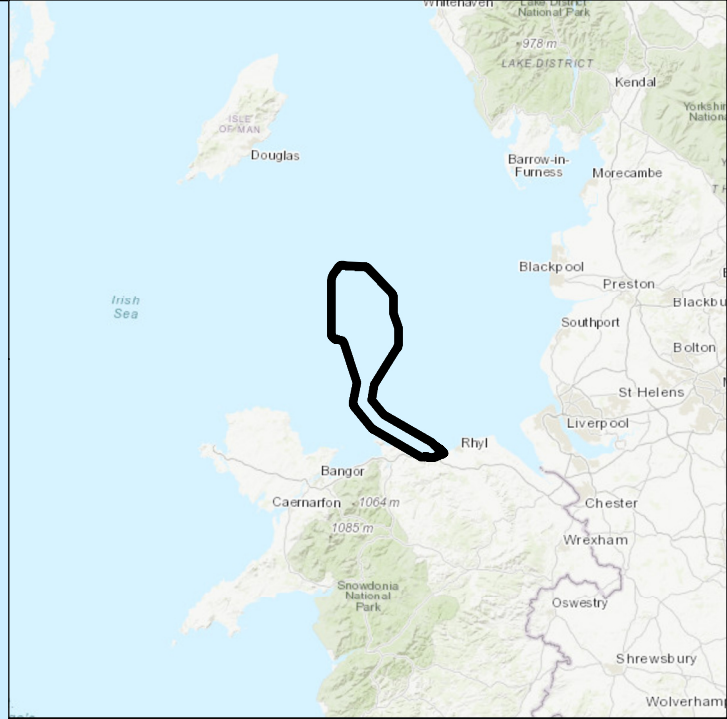
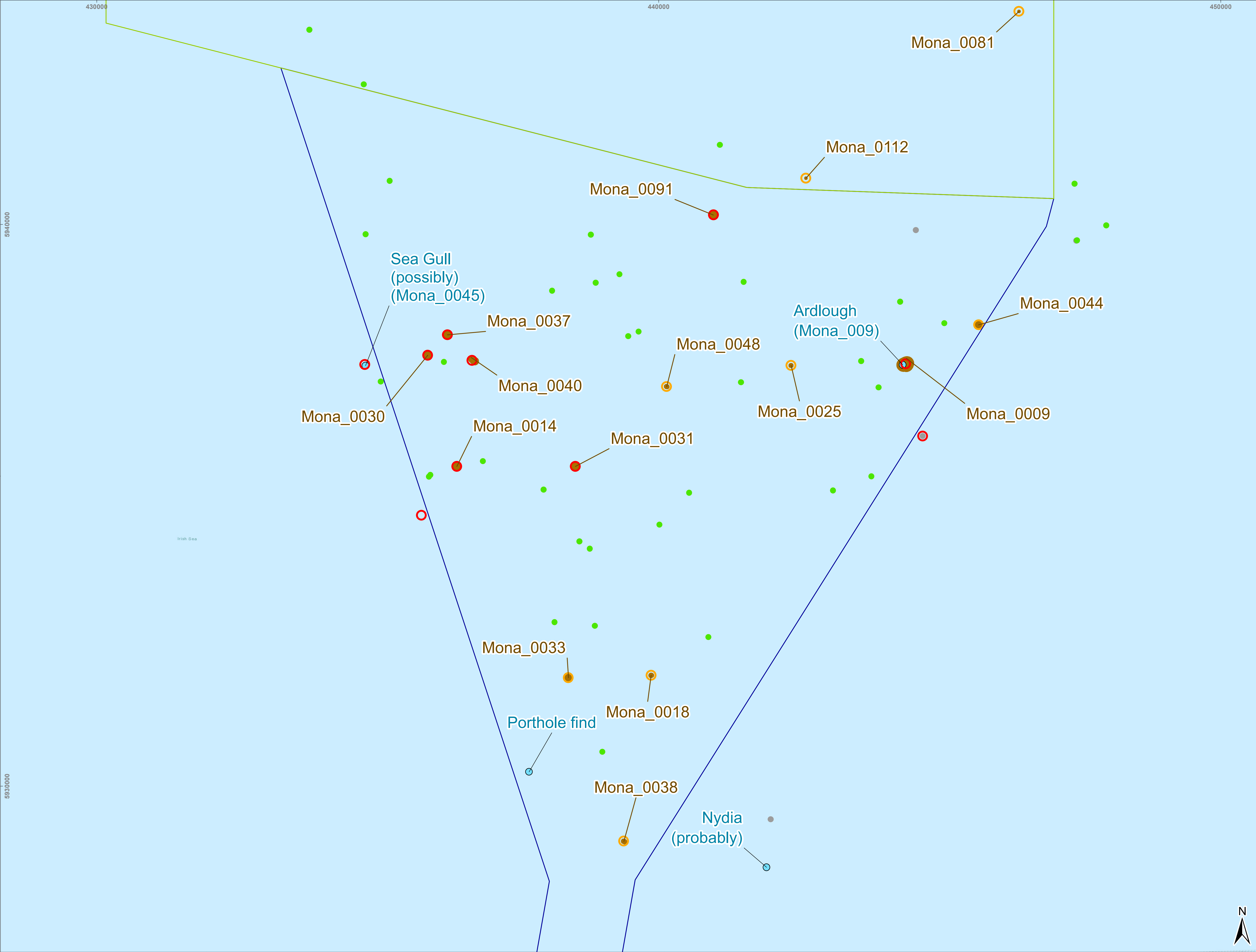


Geodetic Information:
Datum: ETRS 1989
Projection: ETRS 1989 UTM Zone 30N
Scale@ A1: 1:41,000

Data Sources: Client, Natural Resources Wales, NatureScot,
MMO, Marine Regions.org, NHRE, NMRW, UKHO
Wrecks/Obstructions Data: © British Crown and OceanWise,
2022. All rights reserved. License No. EK001-EMS-791512.
Not to be used for Navigation

Service Layer Credits: Sources: Esri, HERE, Garmin,
Intermap, increment P Corp., GEBCO, USGS, FAO, NPS,
NRCAN, GeoBase, IGN, Kadaster NL, Ordnance Survey,
Esri Japan, METI, Esri China (Hong Kong), (c)

VER	DATE	DETAILS	BY	CHECK
00	02/08/23	Initial Issue	NG	JC
03	04/12/23	Revision	NG	SS



Legend

Mona Array Area
BPGBR-MONA-DAT0114

Mona Offshore Cable
Corridor and Access Areas
MO_PRJ_BP_0207_Rev06

Named Wrecks

Unidentified Material

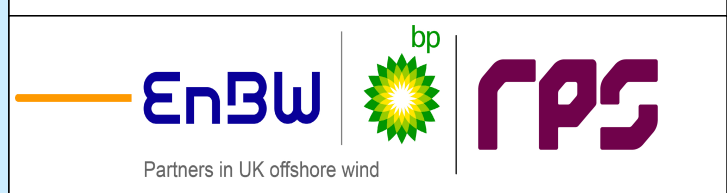
**Geophysical potential
anomaly**

High

Medium

Low

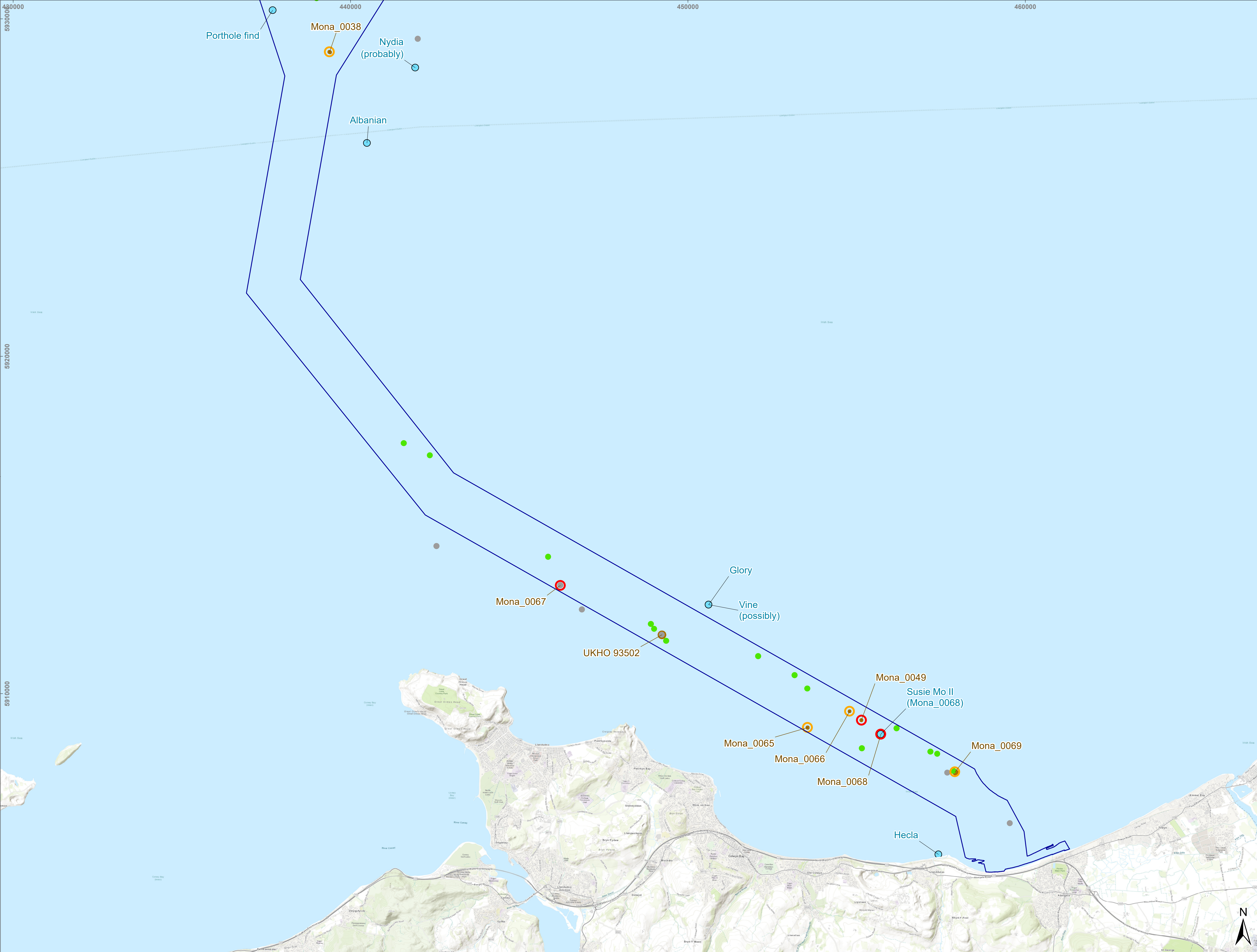
Archaeological
Exclusion Zone (AEZ)



Drawing Number:

RPSE-MN-ES-MISC-106-03

VER	DATE	DETAILS	BY	CHECK
00	02/08/23	Initial Issue	NG	JC
03	04/12/23	Revision	NG	SS



Legend

Mona Offshore Cable Corridor and Access Areas
MO_PRJ_BP_0207_Rev06

Named Wrecks

Unidentified Material

Geophysical potential anomaly

High

Medium

Low

Archaeological Exclusion Zone (AEZ)



Drawing Number:

RPSE-MN-ES-MISC-113-02

Project Name:

MONA OFFSHORE WIND PROJECT

Drawing Title:

OFFSHORE HISTORIC ENVIRONMENT PLAN - SHEET 3

0 0.5 1 2 Miles

0 0.5 1 2 Kilometers

Geodetic Information:

Datum: ETRS 1989

Projection: ETRS 1989 UTM Zone 30N

Scale@ A1: 1:50,000

Data Sources:

Client, Natural Resources Wales, NatureScot, MMO, Marine Regions.org, NHRE, NMRW, UKHO Wrecks/Obstructions Data: © British Crown and OceanWise, 2022. All rights reserved. License No. EK001-EMS-791512. Not to be used for Navigation

Service Layer Credits:

Sources: Esri, HERE, Garmin, Intermap, increment P Corp., GEBCO, USGS, FAO, NPS, NRCAN, GeoBase, IGN, Kadaster NL, Ordnance Survey, Esri Japan, METI, Esri China (Hong Kong), (c)

VER	DATE	DETAILS	BY	CHECK
00	24/08/23	Initial Issue	NG	JC
02	29/09/23	Revision	NG	SS