

# MONA OFFSHORE WIND PROJECT

## Technical Engagement Plan

Document Number: MOCNS-J3303-RPS-10034

Document Reference: E4

APFP Regulations: 5(2)(q)

February 2024

F01



Image of an offshore wind farm

## MONA OFFSHORE WIND PROJECT

### Document status

Version	Purpose of document	Authored by	Reviewed by	Approved by	Review date
F01	Application	RPS	Mona Offshore Wind Ltd	Mona Offshore Wind Ltd	Feb 2024

Prepared by:

Prepared for:

**RPS**

**Mona Offshore Wind Ltd.**

## Contents

<b>1</b>	<b>TECHNICAL ENGAGEMENT PLAN .....</b>	<b>1</b>
1.1	Introduction .....	1
1.1.2	Aims of the report .....	3
1.2	Evidence Plan Process .....	6
1.2.1	Overview .....	6
1.2.2	Evidence Plan Technical consultation .....	11
1.3	Engagement forums .....	37
1.3.1	Marine Navigation Engagement Forum .....	37
1.3.2	Archaeology and Heritage Engagement Forum - offshore .....	44
1.3.3	Archaeology and Heritage Engagement Forum - onshore .....	47
1.4	Other Technical Consultation .....	49
1.4.1	Commercial fisheries consultation .....	49
1.4.2	Shipping and navigation consultation .....	52
1.4.3	Aviation and radar consultation .....	56
1.4.4	Other sea users consultation .....	57
1.4.5	Seascape and visual resources consultation .....	58
1.4.6	Geology, hydrogeology and ground conditions consultation .....	61
1.4.7	Hydrology and flood risk consultation .....	61
1.4.8	Land use and recreation consultation .....	62
1.4.9	Traffic and transport consultation .....	63
1.4.10	Noise and vibration consultation .....	64
1.4.11	Socio-economics consultation .....	65
1.5	References .....	67

## Tables

Table 1.1:	Technical Engagement Plan appendix list. ....	5
Table 1.2:	Participants in the Evidence Plan Process. ....	8
Table 1.3:	Participants in the EWGs. ....	11
Table 1.4:	Steering Group consultation held to date and anticipated to take place during the pre-application phase. ....	12
Table 1.5:	Benthic ecology, Fish and shellfish ecology and Physical processes EWG consultation held to date and anticipated to take place during the pre-application phase. ....	14
Table 1.6:	Issues agreed with the Benthic ecology, Fish and shellfish ecology and Physical processes EWG. ....	15
Table 1.7:	Issues still under discussion with the Benthic ecology, Fish and shellfish ecology and Physical processes EWG. ....	20
Table 1.8:	Marine mammal EWG consultation held to date and anticipated to take place in the pre-application phase. ....	23
Table 1.9:	Issues agreed with the Marine mammal EWG. ....	24
Table 1.10:	Issues still under discussion with the Marine mammal EWG. ....	26
Table 1.11:	Offshore ornithology EWG consultation held to date and anticipated to take place. ....	28
Table 1.12:	Issues agreed with the Offshore ornithology EWG. ....	29
Table 1.13:	Issues under discussion with the Offshore ornithology EWG. ....	31
Table 1.14:	Onshore ecology and onshore and intertidal ornithology EWG meetings. ....	33
Table 1.15:	Issues agreed with the Onshore ecology and onshore and intertidal ornithology EWG. ....	34
Table 1.16:	Issues under discussion with the Onshore ecology and onshore and intertidal ornithology EWG. ....	35
Table 1.17:	Participants in the MNEF process. ....	39
Table 1.18:	MNEF consultation held to date and anticipated to take place in the pre-application phase. ....	41
Table 1.19:	Issues agreed with the MNEF. ....	43
Table 1.20:	Participants in the AHEF- offshore. ....	45
Table 1.21:	AHEF - offshore consultation held to date and anticipated to take place during the pre-application phase. ....	46

## MONA OFFSHORE WIND PROJECT

Table 1.22: AHEF – onshore meetings held to date and anticipated to take place. ....	49
Table 1.23: Commercial fisheries consultation held to date and anticipated to take place during the pre-application phase. ....	50
Table 1.24: Shipping and navigation consultation held to date and anticipated to take place during the pre-application phase. ....	53
Table 1.26: Aviation and radar consultation held to date and anticipated to take place during the pre-application phase. ....	56
Table 1.28: Other sea users consultation held to date and anticipated to take place during the pre-application phase. ....	57
Table 1.29: Seascape and visual consultation held to date and anticipated to take place during the pre-application phase. ....	58
Table 1.31: Hydrology and flood risk consultation held to date and anticipated to take place throughout the pre-application phase. ....	62
Table 1.32: Land use and recreation consultation held to date and anticipated to take place throughout the pre-application phase. ....	63
Table 1.33: Traffic and transport consultation held to date and anticipated to take place throughout the pre-application phase. ....	64
Table 1.34: Noise and vibration consultation held to date and anticipated to take place throughout the pre-application phase. ....	64
Table 1.35: Socio-economics consultation held to date and anticipated to take place throughout the pre-application phase. ....	65

## Figures

Figure 1.1: Location of the Mona Offshore Wind Project. ....	2
--	---

## Appendices

### APPENDIX A – EVIDENCE PLAN STEERING GROUP

### APPENDIX B – BENTHIC ECOLOGY, FISH AND SHELLFISH AND PHYSICAL PROCESSES EWG

### APPENDIX C – MARINE MAMMALS EWG

### APPENDIX D – OFFSHORE ORNITHOLOGY EWG

### APPENDIX E – ONSHORE ECOLOGY EWG

### APPENDIX F – MNEF

### APPENDIX G – AHEF OFFSHORE

### APPENDIX H – COMMERCIAL FISHERIES

### APPENDIX I – SHIPPING NAVIGATION

### APPENDIX J – AVIATION AND RADAR

### APPENDIX K – OTHER SEA USERS

### APPENDIX L – SEASCAPE AND VISUAL RESOURCES

### APPENDIX M – SOCIO-ECONOMICS

### APPENDIX N - AHEF-ONSHORE

### APPENDIX O - GEOLOGY, HYDROGEOLOGY AND GROUND CONDITIONS

### APPENDIX P - HYDROLOGY AND FLOOD RISK

### APPENDIX Q - LAND USE AND RECREATION

### APPENDIX R - TRAFFIC AND TRANSPORT

### APPENDIX S - NOISE AND VIBRATION

## MONA OFFSHORE WIND PROJECT

### Glossary

Term	Meaning
Applicant	Mona Offshore Wind Limited.
Development Consent Order (DCO)	An order made under the Planning Act 2008 granting development consent for one or more Nationally Significant Infrastructure Project (NSIP).
Marine licence	The Marine and Coastal Access Act 2009 requires a marine licence to be obtained for licensable marine activities. Section 149A of the Planning Act 2008 allows an applicant for a DCO to apply for 'deemed marine licences' as part of the DCO process. In addition, licensable activities within 12nm of the Welsh coast require a separate marine licence from Natural Resource Wales (NRW).
Mona Array Area	The area within which the wind turbines, foundations, inter-array cables, interconnector cables, offshore export cables and offshore substation platforms (OSPs) forming part of the Mona Offshore Wind Project will be located.
Mona Offshore Cable Corridor	The corridor located between the Mona Array Area and the landfall up to MHWS, in which the offshore export cables will be located.
Mona Offshore Cable Corridor and Access Areas	The corridor located between the Mona Array Area and the landfall up to MHWS, in which the offshore export cables will be located and in which the intertidal access areas are located.
Mona Offshore Wind Project	The Mona Offshore Wind Project is comprised of both the generation assets, offshore and onshore transmission assets, and associated activities.
Non-statutory consultee	Organisations that an applicant may choose to consult in relation to a project who are not designated in law but are likely to have an interest in the project.
Offshore Wind Leasing Round 4	The Crown Estate auction process which allocated developers preferred bidder status on areas of the seabed within Welsh and English waters and ends when the Agreements for Lease (AfLs) are signed.
The Secretary of State for the Department for Energy Security and Net Zero	The decision maker with regards to the application for development consent for the Mona Offshore Wind Project.
Statutory consultee	Organisations that are required to be consulted by an applicant pursuant to the Planning Act 2008 in relation to an application for development consent. Not all consultees will be statutory consultees (see non-statutory consultee definition).
Wind turbines	The wind turbine generators, including the tower, nacelle and rotor.
The Planning Inspectorate	The agency responsible for operating the planning process for NSIPs.

### Acronyms

Acronym	Description
AEol	Adverse Effects on Integrity
AHEF	Archaeology and Heritage Engagement Forum
ANIFPO	Anglo-North Irish Fish Producers Organisation
AONB	Area of Outstanding Natural Beauty
ARC	Amphibian and Reptile Conservation Trust

## MONA OFFSHORE WIND PROJECT

Acronym	Description
BE	Benthic Ecology
CBC	County Borough Council
CC	County Council
CEA	Cumulative Effects Assessment
Cefas	Centre for Environment, Fisheries and Aquaculture Science
CFLO	Commercial Fisheries Liaison Officer
CPAT	Conwy and Powys Archaeological Trust
CRM	Collision Risk Modelling
CRNRA	Cumulative Regional NRA
DBA	Desk-Based Assessment
DCO	Development Consent Order
Defra	Department for Environment, Food and Rural Affairs
DESNZ	Department for Energy Security and Net Zero
EA	Environment Agency
EDR	Effective Deterrent Range
EIA	Environmental Impact Assessment
EPS	European Protected Species
EWG	Expert Working Group
FIR	Fishing Industry Representative
FLCP	Fisheries Liaison and Coexistence Plan
FSF	Fish and Shellfish
GCN	Great Crested Newt
HE	Historic England
HMCG	His Majesty's Maritime Coastguard
HP MMMU	Harbour Porpoise Marine Mammal Management Unit
HRA	Habitats Regulations Assessment
IEF	Important Ecological Feature
IFPO	Irish Fish Producers Organisation
IoM	Isle of Man
IoM Defa	Isle of Man Department for Environment, Food and Agriculture
IoMSPC	Isle of Man Steam Packet Company Limited
IS&EFPO	Irish South & East Fish Producers Organisation
ISAA	Information to Support Appropriate Assessment
ISEFPO	Irish South and East Fish Producers Organisation
JNCC	Joint Nature Conservation Committee

## MONA OFFSHORE WIND PROJECT

Acronym	Description
LEP	Local Enterprise Partnership
LPA	Local Planning Authority
LSE	Likely Significant Effects
MCA	Maritime and Coastguard Agency
MCZ	Marine Conservation Zone
MFPO	Manx Fish Producers Organisation
MHWS	Mean High Water Springs
MIEU	Major Infrastructure Environment Unit
MLWS	Mean Low Water Springs
MMO	Marine Management Organisation
MNEF	Marine Navigation Engagement Forum
MOD	Ministry of Defence
MSA	Minimum Safety Altitude
MU	Management Unit
NFFO	National Federation of Fisherman's Organisations
NHV	Noordzee Helikopters Vlaanderen
NIFPO	Northern Ireland Fish Producers' Organisation
NMWTRA	North and Mid Wales Trunk Road Agent
NRA	Navigation Risk Assessment
NRW	Natural Resources Wales
NSIP	Nationally Significant Infrastructure Project
NVC	National Vegetation Classification
ODPM	Office of the Deputy Prime Minister
PEIR	Preliminary Environmental Information Report
PP	Physical Processes
pSPA	potential Special Protection Area
PSA	Particle Size Analysis
PSR	Primary Surveillance Radar
RCAHMW	Royal Commission on the Ancient and Historical Monuments of Wales
RSPB	Royal Society for the Protection of Birds
RYA	Royal Yachting Association
SAC	Special Area of Conservation
SFF	Scottish Fishermen's Federation
SFPA	Sea-Fisheries Protection Authority
SN	Shipping and Navigation



## MONA OFFSHORE WIND PROJECT

Acronym	Description
SNCB	Statutory Nature Conservation Body
SoCG	Statement of Common Ground
SoS	Secretary of State
SPA	Special Protection Area
SSC	Suspended Sediment Concentrations
SSSI	Site of Special Scientific Interest
SWFPA	Scottish White Fish Producers Association
TCE	The Crown Estate
TH	Trinity House Lighthouse Service
TWT	The Wildlife Trusts
UK	United Kingdom
UXO	Unexploded Ordnance
WCSP	West Coast Sea Products Ltd
WFA	Welsh Fishermen's Association
WFC	Whitehaven Fishermen's Cooperative
WFPO	Western Fish Producers Organisation
WG	Welsh Government
ZoI	Zone of Influence



# 1 Technical engagement plan

## 1.1 Introduction

### 1.1.1 Overview

1.1.1.1 The Mona Offshore Wind Project is a joint venture of bp Alternative Energy Investments (hereafter referred to as bp) and Energie Baden-Württemberg AG (hereafter referred to as EnBW). The Mona Offshore Wind Project (Figure 1.1) is a proposed offshore wind farm located in the east Irish Sea. As part of the Offshore Wind Leasing Round 4 by The Crown Estate (TCE) Mona Offshore Wind Limited (the Applicant) entered into Agreement for Lease in early 2023.

1.1.1.2 As part of the United Kingdom (UK) government commitment to combat climate change and reduce fossil fuel reliance the generation of clean, renewable energy from offshore wind is an integral component to meet these goals. The current aim for offshore wind in the UK is to generate 50 GW of energy by 2030. Figures released by the Department for Business and Trade in 2023 show that the UK currently has 13.9 GW of installed offshore wind capacity (Department for Business and Trade, 2023). The Mona Offshore Wind Project is expected to commence construction in 2026 with the aim of being fully operational by 2030. The Mona Offshore Wind Project will therefore have an important role in reaching these UK government aims for offshore wind generation and net zero greenhouse gas emissions.

1.1.1.3 At the same time as developing the Mona Offshore Wind Project, the joint venture of bp and EnBW is also developing the Morgan Offshore Wind Project: Generation Assets (hereafter known as the Morgan Generation Assets). Both the Mona Offshore Wind Project and the Morgan Generation Assets Development Consent Order (DCO) applications have been discussed under one Evidence Plan with separate agreement logs for the Mona Offshore Wind Project and the Morgan Generation Assets. This has ensured that any overlap or common issues (including cumulative/in-combination effects) between the two projects have been considered throughout the pre-application phase, while ensuring that any differences are properly and accurately recorded.

MONA OFFSHORE WIND PROJECT

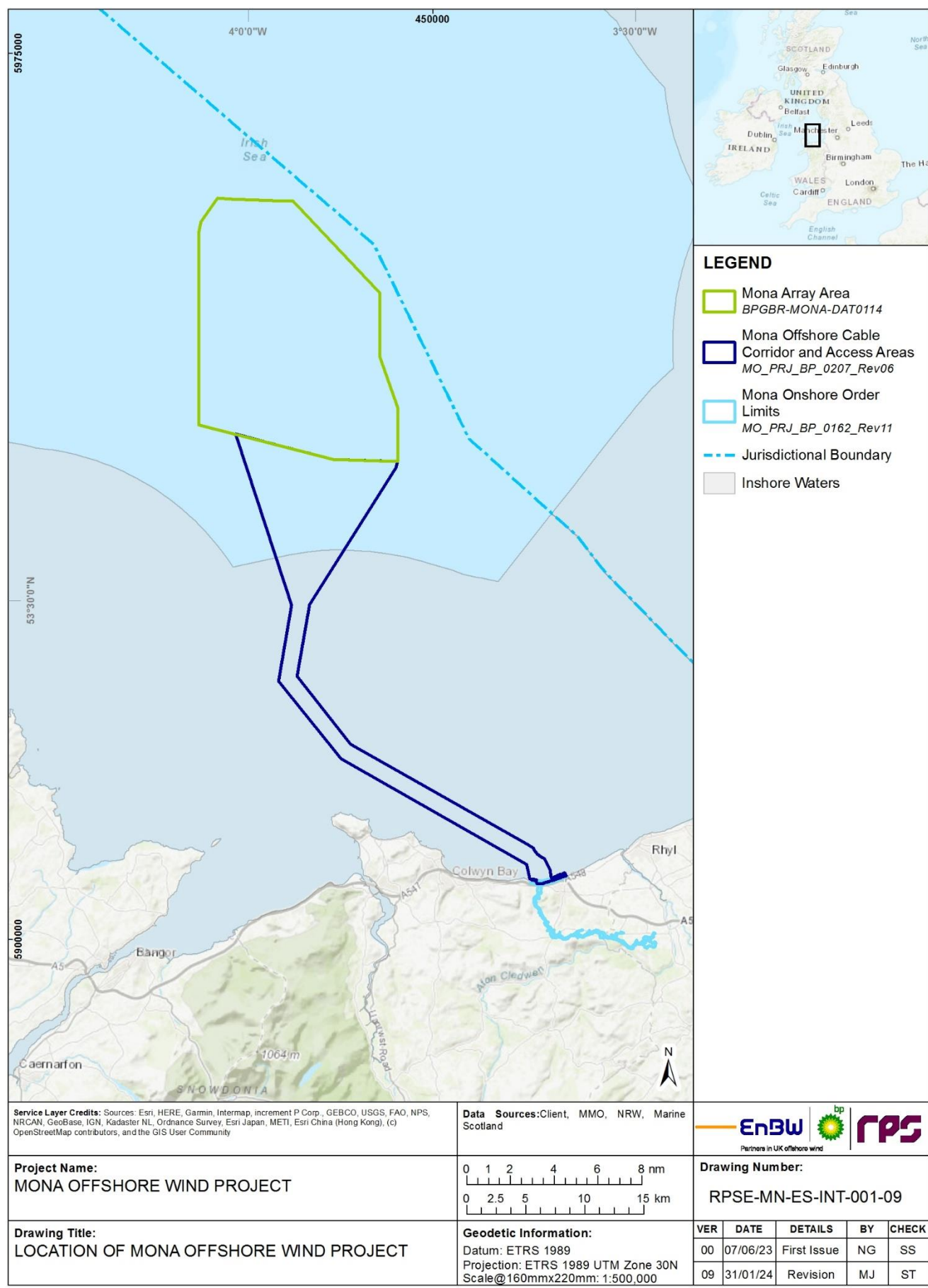


Figure 1.1: Location of the Mona Offshore Wind Project.

## 1.1.2 Aims of the report

1.1.2.1 Consultation has been undertaken as part of the pre-application phase of the Mona Offshore Wind Project. The Consultation report (Document Reference E.3) describes the consultation process that the Applicant has followed both in terms of the non-statutory consultation and the statutory consultation, and publicity stages as required under sections 42, 47 and 48 of the Planning Act 2008. The Consultation report (Document Reference E.3) outlines the feedback received and explains how the feedback received has been taken into account by the Applicant. The purpose of this Technical Engagement Plan is to summarise the technical consultation that has been undertaken for the Mona Offshore Wind Project, to provide the information and evidence required for Environmental Impact Assessment (EIA) and Habitats Regulations Assessment (HRA) processes. Specifically, this Technical Engagement Plan provides a summary of the stakeholder engagement undertaken for the following topics:

- Physical processes (Volume 2, Chapter 1: Physical processes of the Environmental Statement (Document Reference F2.1))
- Benthic subtidal and intertidal ecology (Volume 2, Chapter 2: Benthic subtidal and intertidal ecology of the Environmental Statement (Document Reference F2.2))
- Fish and shellfish ecology (Volume 2, Chapter 3: Fish and shellfish ecology of the Environmental Statement (Document Reference F2.3))
- Marine mammals (Volume 2, Chapter 4: Marine mammals of the Environmental Statement (Document Reference F2.4))
- Offshore ornithology (Volume 2, Chapter 5: Offshore ornithology of the Environmental Statement (Document Reference F2.5))
- Commercial fisheries (Volume 2, Chapter 6: Commercial fisheries of the Environmental Statement (Document Reference F2.6))
- Shipping and navigation (Volume 2, Chapter 7: Shipping and navigation of the Environmental Statement (Document Reference F2.7))
- Seascape and visual resources (Volume 2, Chapter 8: Seascape and visual resources of the Environmental Statement (Document Reference F2.8))
- Marine archaeology (Volume 2, Chapter 9: Marine archaeology of the Environmental Statement (Document Reference F2.9))
- Other sea users (Volume 2, Chapter 10: Other sea users of the Environmental Statement (Document Reference F2.10))
- Geology, hydrogeology and ground conditions (Volume 3, Chapter 1: Geology, hydrogeology and ground conditions of the Environmental Statement (Document Reference F3.1))
- Hydrology and flood risk (Volume 3, Chapter 2: Hydrology and flood risk of the Environmental Statement (Document Reference F3.2))
- Onshore ecology (Volume 3, Chapter 3: Onshore ecology of the Environmental Statement (Document Reference F3.3))
- Onshore and intertidal ornithology (Volume 3, Chapter 4: Onshore and intertidal ornithology of the Environmental Statement (Document Reference F3.4))

## MONA OFFSHORE WIND PROJECT

- Historic environment (Volume 3, Chapter 5: Historic environment of the Environmental Statement (Document Reference F3.5))
- Land use and recreation (Volume 3, Chapter 7: Land use and recreation of the Environmental Statement (Document Reference F3.7))
- Traffic and transport (Volume 3, Chapter 8: Traffic and transport of the Environmental Statement (Document Reference F3.8))
- Noise and vibration (Volume 3, Chapter 9: Noise and vibration of the Environmental Statement (Document Reference F3.9))
- Aviation and radar (Volume 4, Chapter 1: Aviation and radar of the Environmental Statement (Document Reference F4.1))
- Socio-economics (Volume 4, Chapter 3: Socio-economics of the Environmental Statement (Document Reference F4.3))
- Information to support the Appropriate Assessment (Document Reference E1.1, E1.2, E1.3)
- Marine Conservation Zone Assessment (Document Reference E2).

1.1.2.2 Technical consultation was ongoing throughout the pre-application phase of the Mona Offshore Wind Project, with the Applicant considering feedback for the preparation of assessments within the EIA and HRA.

### **Structure of the report**

1.1.2.3 The report has been structured to introduce the Mona Offshore Wind Project, present the different groups under which consultation has taken place and then present the technical engagement per topic. The structure of this report is as follows:

- Introduction – this section introduces the Mona Offshore Wind Project and the aims of this report
- Evidence Plan Process – this section introduces the Evidence Plan Process and presents the technical consultation that has been undertaken under the Evidence Plan Process
- Engagement forums – this section introduces the other engagement forums that have been adopted for the Mona Offshore Wind Project consultation and presents the technical consultation that has been undertaken under these engagement forums
- Other Technical Consultation – this presents the technical consultation that has been undertaken for other topics that are not covered in by the Evidence Plan or engagement forums
- Appendices – these set out the detail of the technical engagement, meeting minutes and any additional information for consultation separated by technical topic. Table 1.1 below outlines the appendices.

## MONA OFFSHORE WIND PROJECT

**Table 1.1: Technical Engagement Plan appendix list.**

Appendix	Title
Appendix A:	Evidence Plan Steering Group
Appendix B:	Benthic ecology, Fish and shellfish ecology and Physical processes Expert Working Group (EWG)
Appendix C:	Marine mammals EWG
Appendix D:	Offshore ornithology EWG
Appendix E:	Onshore ecology EWG
Appendix F:	Marine Navigation Engagement Forum (MNEF)
Appendix G:	Archaeology and Heritage Engagement Forum (AHEF) – offshore
Appendix H:	Commercial fisheries
Appendix I:	Shipping and navigation
Appendix J:	Aviation and radar
Appendix K:	Other sea users
Appendix L:	Seascape and visual resources
Appendix M:	Socio-economics
Appendix N:	AHEF – onshore
Appendix O –	Geology, hydrogeology and ground conditions
Appendix P –	Hydrology and flood risk
Appendix Q –	Land use and recreation
Appendix R –	Traffic and transport
Appendix S –	Noise and vibration



## 1.2 Evidence Plan Process

### 1.2.1 Overview

#### Aims of the Evidence Plan

- 1.2.1.1 The Applicant has undertaken an Evidence Plan Process for the Mona Offshore Wind Project. The Evidence Plan Process was initially developed by the Major Infrastructure Environment Unit (MIEU) of the Department for Environment Food and Rural Affairs (Defra) to provide a formal mechanism to agree, between applicants and statutory bodies, what information and evidence an applicant should submit in support of an application for a Nationally Significant Infrastructure Project (NSIP), with a specific focus on HRA matters. It is a voluntary process, and an Evidence Plan is a non-legally binding agreement between the Applicant, relevant Statutory Nature Conservation Bodies (SNCBs) and key consultees.
- 1.2.1.2 The Evidence Plan is a mechanism to agree upfront what information the Applicant needs to supply to the Planning Inspectorate as part of the DCO applications for the Mona Offshore Wind Project. Whilst the process was initially aimed at ensuring compliance with the Habitats Regulations (Defra, 2012), it has increasingly also been applied to relevant EIA matters, as well as the Marine Conservation Zone (MCZ) assessment process.
- 1.2.1.3 Both the Mona Offshore Wind Project and the Morgan Offshore Wind Project: Generation Assets (hereafter referred to as the Morgan Generation Assets) DCO applications have been discussed under one Evidence Plan with separate agreement logs for the Mona Offshore Wind Project and the Morgan Offshore Wind Project. This has ensured that any overlap or common issues (including cumulative/in-combination effects) between the two projects have been considered throughout the pre-application phase, while ensuring that any differences are properly and accurately recorded. The onshore ecology and ornithology EWG has not included any discussion regarding the Morgan Generation Assets as there are no onshore components to that project.
- 1.2.1.4 As stated in the Defra Guidance Note (Defra, 2012) and the Planning Inspectorate Advice Note 11 (Annex H) (Planning Inspectorate, 2017), an Evidence Plan aims to reduce the risk of NSIPs being delayed by issues relating to the Habitats Regulations (also EIA and MCZ matters for this Evidence Plan) during the evolution of a proposed DCO application, by:
- Giving greater certainty to all participants on the amount and range of evidence an applicant should gather and analyse
  - Helping to address and agree issues early in the pre-application phase in order that robust, streamlined advice can be given and decisions taken. This will also help to reduce the complexity of issues considered during examination, which is governed by strict statutory deadlines
  - Exploring opportunities to avoid, reduce or mitigate potential impacts to designated sites and protected features through changes in project design as well as exploring opportunities for ecological enhancement
  - Demonstrating to the Planning Inspectorate that the data analysis supporting the DCO application is appropriate and agreed with key consultees
  - Focusing the evidence requirements so they are proportionate to the NSIP's potential impacts and costs to applicants are minimised.

## MONA OFFSHORE WIND PROJECT

- 1.2.1.5 The Planning Inspectorate Advice Note 11 suggests that an Evidence Plan should be designed to fit the DCO application process, including EIA scoping and the formal pre-application consultation process. It is also recommended that the Applicant considers how information collected in order to complete the Evidence Plan may prove helpful in preparing an Environmental Statement (Planning Inspectorate, 2017).

### The Evidence Plan Process

- 1.2.1.6 In line with latest best practice (including advice published by Natural England, 2022), it was agreed with all participants (Table 1.2) that the Evidence Plan will cover topics relevant to both HRA and EIA regulations, and assessment requirements for MCZs according to the Marine and Coastal Access Act 2009, including assessment of cumulative and in-combination effects.
- 1.2.1.7 It has considered those topics which affect features designated under:
- The Council Directive 2009/147/EC on the conservation of wild birds (the 'Birds Directive')
  - The Council Directive 92/43/EEC on the Conservation of natural habitats and of wild fauna and flora (as amended) (the 'Habitats Directive') as implemented by the Conservation of Habitats and Species Regulations 2017 (as amended) (the Habitats Regulations)
  - The Conservation of Offshore Marine Habitats and Species Regulations 2017 (as amended).
  - The Wildlife and Countryside Act 1981 (as amended).
  - The ecological features of relevance to the Infrastructure and Planning (Environmental Impact Assessment) Regulations 2017 (as amended); and
  - Internationally important wetland sites designated under the Ramsar Convention 1971 ('Ramsar sites') are afforded the same protection as Special Areas of Conservation (SACs) and Special Protection Areas (SPAs) when considering development proposals (as stated in Office of the Deputy Prime Minister (ODPM) Circular 06/2005).
- 1.2.1.8 Natural England advice (2022) has recommended that the Evidence Plan Process for offshore wind projects should also be expanded to include other sites designated for ecological features that could be impacted by the project. As outlined above, this includes MCZs designated under the Marine and Coastal Access Act 2009 and Sites of Special Scientific Interest (SSSIs) under the Wildlife and Countryside Act 1981 (as amended).
- 1.2.1.9 The process that the Defra (2012) guidance sets out and the process that this Evidence Plan has followed is to:
- Ensure that sufficient and proportionate information is provided within the relevant assessments of the Mona Offshore Wind Project, so as to enable the Planning Inspectorate and the Secretary of State (SoS) to form a view on the Likely Significant Effects (LSE) of the Mona Offshore Wind Project, potential for adverse effects on the integrity of the National Site Network (update to the Conservation of Habitats and Species Regulations 2017 (as amended) included the creation of a National Site Network which comprises the protected sites already designated under the Natura Directives, and any further sites designated under these Regulations) and the conclusions of the EIA



## MONA OFFSHORE WIND PROJECT

- Document agreement on information supplied by the Applicant to SNCBs (and other relevant participants)
- Provide greater certainty for all participants that the survey methods, baseline data and the methods and analyses used for the EIA and the HRA satisfy the relevant legislation
- Identify issues early on in the process and approach to the resolution of those issues
- Agree the evidence and data that supports the HRA and EIA for the Mona Offshore Wind Project.

1.2.1.10 An Evidence Plan Steering Group has been established for the Mona Offshore Wind Project, which has met at key milestones throughout the EIA process. In addition, EWGs have been established to discuss topic-specific issues with relevant stakeholders. EWG meetings have been held at key stages in the EIA process or when new information becomes available for each topic, to provide the opportunity for stakeholders to provide feedback and advice to inform the proposals at an early stage. Further detail on the remit and discussion topics of the technical EWGs, inputs required throughout the pre-application phase and progress to agreements are set out for each of the technical EWGs in section .

1.2.1.11 During the Evidence Plan Process the relevant information, as provided by the Applicant, was passed to members before meetings (wherever possible) at key project stages or when new information became available. The Steering Group and EWG meetings then provided the opportunity for the stakeholders to review, discuss and provide feedback and advice. A draft of the meeting minutes was shared with all members for comment prior to a final version being issued. Comments on the draft meeting minutes were required after two weeks of the draft minutes being issued and the aim was to issue final minutes within two weeks thereafter.

### Roles and responsibilities of the evidence plan stakeholders

1.2.1.12 The Evidence Plan Process was led by the Applicant. Table 1.2 provides a list of all participants involved in the Evidence Plan Process.

**Table 1.2: Participants in the Evidence Plan Process.**

#### Participants

The Applicant

Applicant's HRA and EIA Consultant (RPS)

The Planning Inspectorate

Natural Resources Wales (NRW)

Natural England

The Marine Management Organisation (MMO)

Isle of Man Department of Environment, Food & Agriculture (Defa)

The Royal Society for the Protection of Birds (RSPB)

The Wildlife Trusts (TWT)

North Wales Wildlife Trust

Joint Nature Conservation Committee (JNCC)

## MONA OFFSHORE WIND PROJECT

### Participants

Amphibian and Reptile Conservation Trust (ARC)

Welsh Government (WG)

Local Planning Authorities (LPAs)

### The Steering Group

- 1.2.1.13 In developing the Evidence Plan, stakeholder engagement and input was of principal importance. The development and monitoring of the Evidence Plan and its subsequent progress has been undertaken by the Steering Group. The Steering Group comprises the Applicant, Planning Inspectorate, NRW, Natural England, JNCC and the MMO as the key regulatory and SNCBs.
- 1.2.1.14 The Steering Group met at the start of the Evidence Plan Process in November 2021 and then have met at key milestones throughout the programme (see Table 1.4 for timings of Steering Group meetings).
- 1.2.1.15 The Steering Group has overseen the development and monitoring of the Evidence Plan and its subsequent progress. The focus of the Steering Group was initially to agree the aims, scope and content of the Evidence Plan. Subsequent meetings have focused on updating the Steering Group on the progress made within the EWGs and discussing any key issues that arose. The Steering Group meetings have been used as a forum to check progress against the evidence plan milestones, ensuring that there is scope for the Steering Group to guide and inform the process.
- 1.2.1.16 In addition, the Steering Group meetings have provided key project updates to regulators and SNCBs and have ensured clarity on the timescales for inputs from members of the Steering Group to ensure resources were available during these key consultation periods.

### The Applicant

- 1.2.1.17 The Applicant has the following roles and responsibilities:
- Act as chair and secretariat
  - Organise all Steering Group and EWG meetings, including agreeing dates, times, attendees and agenda for meetings
  - Disseminate any relevant information in good time ahead of each Steering Group meeting
  - Respond to queries on the Mona Offshore Wind Project
  - Circulate meeting minutes after each Steering Group meeting
  - Collate, record and take account of any responses and comments provided following meetings.
- 1.2.1.18 RPS has been instructed by the Applicant to lead on the EIA, HRA and Evidence Plan Process for the Mona Offshore Wind Project. RPS worked on the Applicants behalf as chair and secretariat.

## The Planning Inspectorate

- Provide comment on the Steering Group process and content. Where appropriate, provide advice under Section 51 of the Planning Act 2008
- The Planning Inspectorate will not provide comment on the merits or concerns of the Mona Offshore Wind Project.

## Natural Resources Wales Advisory

- Provide comments on the onshore and offshore elements of the Mona Offshore Wind Project on Welsh land or in Welsh waters (within and outside of 12 nm from the Welsh coast).

## Joint Nature Conservation Committee

- Provide comments on the offshore elements of the Mona Offshore Wind Project in UK offshore waters (outside of 12 nm from the UK coast).

## Natural England

- Provide comments on the onshore and offshore elements of the Mona Offshore Wind Project on English land or in English waters (within and outside of 12 nm from the English coast). Both the offshore and onshore elements of the Mona Offshore Wind Project are wholly within Welsh waters or within Wales, but the Mona Potential Array Area (presented at the Preliminary Environmental Information Report (PEIR) stage) was partially within English offshore waters before being refined to the version presented at application (shown on Figure 1.1).

## Marine Management Organisation

- Provide comments on all offshore elements of the Mona Offshore Wind Project in English inshore and offshore waters (below Mean High Water Springs (MHWS), within and outside of 12 nm from the English coast).

## Expert Working Groups

- 1.2.1.19 EWGs were set up to discuss topic specific issues with the relevant stakeholders. The aim of the EWGs was to discuss and agree (where possible) key elements of the EIA and HRA during the pre-application phases. The process has been iterative and each group has worked through the discussion points to reach agreement, as far as possible, during the pre-application phases. Meetings have been held at key stages or when new information became available for each topic (e.g. when survey data had been analysed) to provide the opportunity for stakeholders to provide feedback and advice at an early stage.
- 1.2.1.20 The EWGs and relevant participants are summarised in Table 1.3.
- 1.2.1.21 The remit of each EWG was discussed and agreed at the first EWG meeting, with an overview of the remit and inputs required for each of the EWGs set out in section 1.2.2.

## MONA OFFSHORE WIND PROJECT

**Table 1.3: Participants in the EWGs.**

Expert Working Group	Participants
Benthic ecology, Fish and shellfish and Physical processes	Natural England MMO Centre for Environment, Fisheries and Aquaculture Science (Cefas) JNCC NRW Environmental Agency (EA) TWT Isle of Man Department for Environment, Food and Agriculture (IoM Defa)
Marine mammals	Natural England JNCC MMO TWT Cefas NRW IoM Defa
Offshore ornithology	Natural England RSPB MMO NRW TWT JNCC IoM Defa
Onshore ecology Onshore and intertidal ornithology	Conwy County Borough Council Denbighshire County Council RSPB NRW North Wales Wildlife Trust ARC WG Woodland Trust

### 1.2.2 Evidence Plan Technical consultation

#### Steering Group

- 1.2.2.1 The Steering Group consultation focus and process has been outlined in section 1.2.1.15.
- 1.2.2.2 The programme of consultation is outlined within Table 1.4 and full meeting minutes and any additional information has been included within Appendix A. Agreement on

## MONA OFFSHORE WIND PROJECT

consultation items has been sought under the EWGs and therefore no agreement logs or summary of agreements are included for the Steering Group.

**Table 1.4: Steering Group consultation held to date and anticipated to take place during the pre-application phase.**

Date	Participants	Focus of consultation
16 November 2021	The Applicant, RPS, Natural England, NRW, MMO, JNCC, Planning Inspectorate	<ul style="list-style-type: none"> <li>Introduce and gain feedback on Evidence Plan</li> <li>Identify key contacts and roles and responsibilities</li> <li>Discuss establishment of EWGs and key contacts for these.</li> </ul>
13 December 2021	The Applicant, RPS, Natural England, MMO, JNCC, Environment Agency (EA), Planning Inspectorate	<ul style="list-style-type: none"> <li>Introduce the cable route selection study</li> <li>To procure high level feedback on the cable routing process</li> <li>To identify any red flags.</li> </ul>
14 December 2021	The Applicant, RPS, NRW, Wood <sup>1</sup>	<ul style="list-style-type: none"> <li>Introduce the cable route selection study</li> <li>To procure high level feedback on the cable routing process</li> <li>To identify any concerns.</li> </ul>
20 July 2022	The Applicant, RPS, Natural England, NRW, MMO, JNCC, Planning Inspectorate	<ul style="list-style-type: none"> <li>Approach to cable route selection</li> <li>LSE screening methodology</li> <li>Opportunities to discuss points from the Scoping Opinion.</li> </ul>
14 February 2023	The Applicant, RPS, Natural England, NRW, MMO, JNCC, Planning Inspectorate	<ul style="list-style-type: none"> <li>HRA Stage 1 Screening and Information to Support Appropriate Assessment (ISAA) methodology</li> <li>Consultation on the PEIR and building towards the Statements of Common Ground (SoCGs)</li> <li>Cable route site selection study updates</li> <li>Engineering considerations towards SACs.</li> </ul>
29 June 2023	The Applicant, RPS, Natural England, NRW, MMO, JNCC, Planning Inspectorate	<ul style="list-style-type: none"> <li>HRA Stage 1 Screening and ISAA methodology</li> <li>Section 42 responses</li> <li>Agreement logs.</li> </ul>
17 October 2023	The Applicant, RPS, Natural England, NRW, MMO, JNCC, Planning Inspectorate	<ul style="list-style-type: none"> <li>HRA Stage 1 Screening and ISAA methodology</li> <li>Underwater Sound Management Strategy</li> <li>Agreement logs.</li> </ul>

## Benthic ecology, Fish and shellfish ecology and Physical processes EWG

### Overview

1.2.2.3 Benthic ecology, fish and shellfish and physical processes were consulted on in one EWG due to the inter-related nature of the three topics. The remit and input required for the benthic ecology, fish and shellfish and physical processes EWG was as follows (as discussed in the first EWG). As the Mona Offshore Wind Project developed, some aspects of the EWGs remit were no longer required

<sup>1</sup> Wood attended the Steering Group meeting on the 14 December 2021 representing the Applicant for the cable route site selection assessment.

## MONA OFFSHORE WIND PROJECT

- To agree survey methodologies and extent (i.e. project specific study areas) to adequately characterise the baseline environment
- To agree survey data analysis methodologies and expected outputs
- To agree any modelling requirements (physical processes/underwater noise), parameters and methodologies
- To agree regional study areas, if relevant
- To discuss the evidence base and agree that the baseline environment information (from desktop and site-specific survey data) is appropriate for the purpose of the relevant assessments, noting any agreed limitations to the baseline data and solutions to address these limitations (e.g. identifying other evidence sources). This included more detailed surveys within Marine Protected Areas (e.g. SACs and SPAs)
- To discuss and agree the impacts to be assessment in the EIA and those that can be scoped out
- To discuss and agree potential for effects on protected habitats and/or species
- To agree assessment methodologies and risk assessment tools for the purposes of the HRA and EIA (including SSSIs and MCZs)
- To discuss and agree the scope of cumulative (for EIA) and in-combination assessments (for HRA)
- To agree approach for determining LSE on European sites, and consideration of other potential impacts on European sites as appropriate
- To discuss the initial findings of the EIA
- To discuss any evidence to support the design of compensatory measures if an 'in principal' Habitats Regulations derogation case and/or Stage 2 MCZ Assessment, this was not deemed to be required by the Applicant and EWG
- To agree appropriate avoidance, mitigation and management measures to ensure effects are reduced to an acceptable level. Discussion to include how key mitigation measures are secured in the DCO. Development of project specific mitigation will give full consideration to the mitigation hierarchy (as per Natural England 2022) throughout the Evidence Plan Process and the pre-application phase
- To discuss proposals from the Applicant for environmental enhancements
- To agree proposed monitoring, if applicable, which is outlined in the Offshore In-Principle Monitoring Plan (Document Reference J15).

1.2.2.4 The outline programme of meetings is outlined within Table 1.5 and full meeting minutes and any additional information has been included within Appendix B.

## MONA OFFSHORE WIND PROJECT

**Table 1.5: Benthic ecology, Fish and shellfish ecology and Physical processes EWG consultation held to date and anticipated to take place during the pre-application phase.**

Date	Participants	Focus of consultation
17 February 2022	The Applicant, RPS, Natural England, MMO, Cefas, JNCC, NRW, EA, TWT	<ul style="list-style-type: none"> <li>Introduce and gain feedback on Evidence Plan</li> <li>Discuss stakeholder comments on the survey scopes to date and any further data required</li> <li>Update on the progress of surveys and data analysis.</li> </ul>
01 April 2022	The Applicant, RPS, Natural England, MMO, Cefas, JNCC, NRW, TWT	<ul style="list-style-type: none"> <li>Provision of the benthic survey scope of works.</li> </ul>
29 November 2022	The Applicant, RPS, Natural England, MMO, Cefas, JNCC, NRW, TWT, IoM Defa	<ul style="list-style-type: none"> <li>Key project updates</li> <li>Baseline characterisation and modelling approach</li> <li>Initial outputs of impact assessment.</li> </ul>
14 March 2023	The Applicant, RPS, Natural England, MMO, Cefas, JNCC, NRW, TWT, IoM Defa	<ul style="list-style-type: none"> <li>Baseline characterisation and initial outputs of impact assessment</li> <li>Cumulative assessment approach and initial impact assessment approach to agreement.</li> </ul>
11 July 2023	The Applicant, RPS, Natural England, MMO, Cefas, JNCC, NRW, TWT, IoM Defa	<ul style="list-style-type: none"> <li>Discussion of statutory consultation responses</li> <li>Updated baselines</li> <li>Agreement logs.</li> </ul>
14 August 2023	The Applicant, RPS, Natural England, MMO, Cefas, JNCC, NRW, TWT, IoM Defa	<ul style="list-style-type: none"> <li>Provision of a technical note presenting the approach to physical processes modelling for the application.</li> </ul>
12 October 2023	The Applicant, RPS, Natural England, MMO, Cefas, JNCC, NRW, TWT, IoM Defa	<ul style="list-style-type: none"> <li>To present the updates to the benthic ecology baseline characterisation to address statutory consultation responses. Physical processes and fish and shellfish ecology were not discussed.</li> </ul>
07 December 2023	The Applicant, RPS, Natural England, MMO, Cefas, JNCC, NRW, TWT, IoM Defa	<ul style="list-style-type: none"> <li>Presentation of the final impact assessment, mitigation measures and progress to agreement.</li> </ul>

### Issues agreed

1.2.2.5 Table 1.6 presents the agreement areas for the Benthic ecology, Fish and shellfish ecology and Physical processes EWG members – the full agreement log is presented in Appendix B. Only NRW, JNCC, Natural England and TWT provided responses in the agreement logs circulated after each EWG meeting.



## MONA OFFSHORE WIND PROJECT

**Table 1.6: Issues agreed with the Benthic ecology, Fish and shellfish ecology and Physical processes EWG.**

Area where agreement is sought	Topic	EWG member	Progress of agreement
Agreement on the remit and inputs to the EWG	Benthic ecology, Fish and shellfish ecology and Physical processes	NRW	Agreed
		JNCC	Agreed
		Natural England	Agreed
		TWT	Agreed
Agreement on Ways of Working document, including timescales	Benthic ecology, Fish and shellfish ecology and Physical processes	NRW	Agreed
		JNCC	Agreed
		Natural England	Agreed
		TWT	Agreed
Agreement on broad approach to surveys	Benthic ecology	NRW	Agreed
		JNCC	Agreed
		Natural England	Agreed
		TWT	Agreed
Agreement on broad approach to baseline characterisation for benthic subtidal and intertidal ecology	Benthic ecology	NRW	Agreed
		Natural England	Agreed
		Cefas	No comments in agreement log
Agreement on broad approach to baseline characterisation for fish and shellfish ecology	Fish and shellfish ecology	NRW	Agreed
		Natural England	Agreed
		JNCC	Fish and shellfish ecology falls outside of JNCC's remit, defer to NRW
Agreement to the scoping of impacts for the EIA and HRA for benthic subtidal and intertidal ecology	Benthic ecology	NRW	Agreed
		Natural England	Agreed
		JNCC	Agreed with caveats
The approach used for determining LSE on European sites with Annex I habitats and features is appropriate and that all sites within the Zone of Influence (ZoI) of indirect effect from suspended sediment concentrations (SSC) and changes in physical processes have been identified (noting that the Dee Estuary SAC falls outside the ZoI and will be screened out of the LSE screening for the final application)	Benthic ecology	NRW	Agreed
		JNCC	No sites designated for Annex I habitats occur in the offshore area of the Mona project. JNCC therefore have no further comments.
		Natural England	Defer to NRW

## MONA OFFSHORE WIND PROJECT

Area where agreement is sought	Topic	EWG member	Progress of agreement
		Cefas	No comments in agreement log
The regional benthic subtidal and intertidal ecology study area that was defined in the PEIR is appropriate for the baseline characterisation	Benthic ecology	NRW	Agreed
		JNCC	Agreed
		Natural England	Defer to NRW
Sufficient site-specific and desktop data has been collated to appropriately characterise the baseline benthic subtidal and intertidal ecology environment to inform the EIA	Benthic ecology	NRW	Agreed
		Natural England	Defer to NRW
		Cefas	No comments in agreement log
The benthic intertidal ecology baseline, including identification of important ecological features (IEF), is agreed	Benthic ecology	NRW	Agreed
		JNCC	Defer to NRW
		Natural England	Defer to NRW
		Cefas	No comments in agreement log
No Annex I habitat features of the Menai Strait and Conwy Bay SAC are present in the overlap with the Mona Offshore Cable Corridor	Benthic ecology	NRW	Agreed
		JNCC	Defer to NRW
		Natural England	Defer to NRW
		Cefas	No comments in agreement log
The appropriate designated site (i.e. the Menai Strait and Conwy Bay SAC), and appropriate benthic habitat features, have been identified and taken forward for consideration in the EIA and all other designated sites (including MCZs) with benthic features fall outside the Zol and do not require assessment	Benthic ecology	JNCC	Agreed
		Cefas	No comments in agreement log
On the basis that there is no direct overlap with any Annex I habitat features of the SAC, there will be no LSE from long term habitat loss and temporary habitat disturbance and so these impact pathways can be screened out of the ISAA for the Menai Strait and Conwy Bay SAC (i.e. due to no overlap with any designated features and so no direct impacts)	Benthic ecology	NRW	Agreed
		JNCC	Defer to NRW
		Natural England	Defer to NRW
		Cefas	No comments in agreement log
It is appropriate to scope out accidental pollution from the benthic subtidal and intertidal ecology chapter (noting that effects from the release of bentonite (a chemically inert, natural clay) are assessed in the increased in SSC and sediment deposition impact pathway)	Benthic ecology	NRW	Agreed
		JNCC	Agreed
		Natural England	Defer to NRW
		Cefas	No comments in agreement log

## MONA OFFSHORE WIND PROJECT

Area where agreement is sought	Topic	EWG member	Progress of agreement
<p>Noting the clarification points bulleted below, the potential impacts assessed represent a comprehensive list of potential effects on benthic ecology from the Mona Offshore Wind Project.</p> <ul style="list-style-type: none"> <li>Habitat alteration/physical change to another sediment type is fully described and assessed in the assessment of long term habitat loss.</li> <li>Secondary scour is scoped out of Volume 2, Chapter 1: Physical processes and an assessment is therefore no required in the benthic chapter<sup>2</sup></li> </ul> <p>Impacts associated with the removal of marine growth from foundations during the maintenance phase spans several impact pathways. As such this impact has been considered within two impact pathway assessments: 1) increased SSC and sediment deposition (i.e. in relation to the deposition and smothering element) and 2) in the assessment of the introduction of artificial structures and the potential for this to extend the reef effect in the vicinity of foundations</p>	Benthic ecology	NRW	Agreed
		Natural England	Defer to NRW
		Cefas	No comments in agreement log
The list of projects screened into the CEA in the EIA and the in-combination assessment in the HRA are appropriate	Benthic ecology	JNCC	Agreed
Agreement to the scoping of impacts for the EIA and HRA for fish and shellfish ecology	Fish and shellfish ecology	NRW	Agreed
		Natural England	Agreed
		JNCC	Fish and shellfish ecology falls outside of JNCC's remit, defer to NRW
Agreement to the scoping of impacts for the EIA and HRA for physical processes	Physical processes	NRW	Agreed
		Natural England	Agreed
		JNCC	Agreed
		Cefas	Agreed
There will be no significant effects on physical processes in EIA terms for the project alone or cumulatively with other plans and projects	Physical processes	JNCC	Defer to NRW
Agreement on approach to sound modelling and approach to assessment	Fish and shellfish ecology	NRW	Agreed
		Natural England	Agreed

<sup>2</sup> Wording included as per the agreement log sent to the EWG. The Applicant has now included an assessment of secondary scour in Volume 2, Chapter 1: Physical processes of the Environmental Statement (Document Reference F2.1)

## MONA OFFSHORE WIND PROJECT

Area where agreement is sought	Topic	EWG member	Progress of agreement
		JNCC	Fish and shellfish ecology falls outside of JNCC's remit, defer to NRW
Agreement on physical processes modelling strategy for the Environmental Statement	Physical processes	NRW	Agreed with caveats
		JNCC	Defer to NRW
		MMO/Cefas	Agreed
Agreement that the fish and shellfish ecology study area that was defined in the PEIR is appropriate for the baseline characterisation	Fish and shellfish ecology	NRW	Agreed
		Natural England	Agreed
		JNCC	Fish and shellfish ecology falls outside of JNCC's remit, defer to NRW
		Cefas	Agreed
The appropriate designated sites and appropriate fish and shellfish ecology features have been identified within the baseline characterisation and considered where appropriate in the EIA and HRA	Fish and shellfish ecology	NRW	Agreed
		Natural England	Agreed
		JNCC	Fish and shellfish ecology falls outside of JNCC's remit, defer to NRW
		Cefas	Agreed
The approach used for determining LSE on European sites with Annex II diadromous fish as features is appropriate and that all the relevant sites have been identified	Fish and shellfish ecology	NRW	Agreed
		Natural England	Defer to NRW
		JNCC	Fish and shellfish ecology falls outside of JNCC's remit, defer to NRW
		Cefas	No comments in the agreement log
There will be no adverse effects on integrity (AEoI) for SACs designated for fish features for any impacts for the project alone or in combination	Fish and shellfish ecology	NRW	Agreed
		JNCC	Fish and shellfish ecology falls outside of JNCC's remit, defer to NRW
		Natural England	Defer to NRW
		Cefas	No comments in the agreement log
The approach to underwater sound modelling, including soft starts and ramp ups is appropriate, noting that these will not be effective for all fish and shellfish receptors	Fish and shellfish ecology	NRW	Agreed
		Cefas	Agreed
		JNCC	Fish and shellfish ecology falls outside of JNCC's remit, defer to NRW

## MONA OFFSHORE WIND PROJECT

Area where agreement is sought	Topic	EWG member	Progress of agreement
		Natural England	Defer to NRW
The approach to underwater sound modelling based on presentation of both static receptors and those moving away from the source is appropriate	Fish and shellfish ecology	NRW	Agreed
		Natural England	Defer to NRW
		JNCC	Fish and shellfish ecology falls outside of JNCC's remit, defer to NRW
		Cefas	No comments in the agreement log
Cod and herring should be considered of high sensitivity to underwater sound	Fish and shellfish ecology	Cefas	Agreed
		NRW	Agreed
The characterisation of sandeel potential is sufficient to inform the EIA with the caveat that PSA data is presented for the Environmental Statement to allow for data cross-checking by stakeholders and that additional Particle Size Analysis (PSA) sample data is extracted from the Cefas OneBenthic tool for the project region to provide a wider context regarding substrate suitability	Fish and shellfish ecology	NRW	Agreed
		JNCC	Fish and shellfish ecology falls outside of JNCC's remit, defer to NRW
		Natural England	Defer to NRW
The characterisation of herring spawning potential is sufficient to inform the EIA, with the caveat that additional heat mapping of herring larval data is presented for the Environmental Statement, that PSA data is presented for the Environmental Statement to allow for data cross-checking by stakeholders and that additional PSA sample data is extracted from the Cefas OneBenthic tool for the project region to provide a wider context regarding substrate suitability	Fish and shellfish ecology	NRW	Agreed
		Natural England	Agreed
		JNCC	Agreed
		Cefas	Agreed
On the basis that there is no direct overlap with fish features of MCZs of sound contours with the potential to cause injury or behavioural responses, there will be no risk of hindering conservation objectives of any MCZs with fish features (from underwater sound or any other impacts)	Fish and shellfish ecology	NRW	Agreed
		JNCC	Fish and shellfish ecology falls outside of JNCC's remit, defer to NRW
		Natural England	Defer to NRW
		Cefas	No comments in the agreement log
For piling impacts, no significant effects are predicted on fish and shellfish receptors, other than cod and herring during the spawning period	Fish and shellfish ecology	NRW	Agreed
		JNCC	Fish and shellfish ecology falls outside of JNCC's remit, defer to NRW
		Natural England	Defer to NRW

## MONA OFFSHORE WIND PROJECT

Area where agreement is sought	Topic	EWG member	Progress of agreement
		Cefas	No comments in agreement log
Measures adopted as part of the project (as set out in Table 8.17 of the PEIR) are appropriate and agreed to ensure significant effects are avoided, other than underwater sound	Fish and shellfish ecology	NRW	Agreed
		JNCC	Fish and shellfish ecology falls outside of JNCC's remit, defer to NRW
		NE	Defer to NRW
		Cefas	No comments in agreement log

### Issues under discussion

1.2.2.6 The following areas are still under discussion with the EWG members, the full agreement log is presented in Appendix C.

**Table 1.7: Issues still under discussion with the Benthic ecology, Fish and shellfish ecology and Physical processes EWG.**

Area where agreement is sought	Topic	EWG member	Progress of agreement
There will be no significant effects on physical processes in EIA terms for the project alone or cumulatively with other plans and projects	Physical processes	NRW, Natural England, Cefas	Under discussion
The list of projects screened into the Cumulative Effects Assessment (CEA) in the EIA and the in-combination assessment in the HRA are appropriate	Physical processes	All	Under discussion
The characterisation of sandeel potential is sufficient to inform the EIA with the caveat that PSA data is presented for the Environmental Statement to allow for data cross-checking by stakeholders and that additional Particle Size Analysis (PSA) sample data is extracted from the Cefas OneBenthic tool for the project region to provide a wider context regarding substrate suitability	Fish and shellfish ecology	Cefas	Under discussion
For piling impacts, although a significant effect (in EIA terms) is predicted on herring and cod spawning, the magnitude of any such effects will be reduced through measures set out in the Underwater Sound Management Strategy, which will be agreed with stakeholders post consent	Fish and shellfish ecology	NRW, Cefas	Under discussion
		JNCC	Fish and shellfish ecology falls outside of JNCC's remit, defer to NRW
		Natural England	Defer to NRW
The list of projects screened into the CEA in the EIA and the in-combination assessment in the HRA are appropriate	Fish and shellfish ecology	All	Under discussion
Agreement on broad approach to baseline characterisation for benthic subtidal and intertidal ecology	Benthic ecology	JNCC	Under discussion

## MONA OFFSHORE WIND PROJECT

Area where agreement is sought	Topic	EWG member	Progress of agreement
The regional benthic subtidal and intertidal ecology study area that was defined in the PEIR is appropriate for the baseline characterisation	Benthic ecology	Cefas	Under discussion
Sufficient site-specific and desktop data has been collated to appropriately characterise the baseline benthic subtidal and intertidal ecology environment to inform the EIA	Benthic ecology	JNCC	Under discussion
The appropriate designated site (i.e. the Menai Strait and Conwy Bay SAC), and appropriate benthic habitat features, have been identified and taken forward for consideration in the EIA and all other designated sites (including MCZs) with benthic features fall outside the Zol and do not require assessment	Benthic ecology	NRW, Natural England	Under discussion
The impact pathways assessed for benthic subtidal ecology will not result in AEol of the Menai Strait and Conwy Bay SAC (or any other SAC) given the implementation of the measures adopted as part of Mona Offshore Wind Project	Benthic ecology	All	Under discussion
<p>Noting the clarification points bulleted below, the potential impacts assessed represent a comprehensive list of potential effects on benthic ecology from the Mona Offshore Wind Project.</p> <ul style="list-style-type: none"> <li>Habitat alteration/physical change to another sediment type is fully described and assessed in the assessment of long term habitat loss.</li> <li>Secondary scour is scoped out of Volume 2, Chapter 1: Physical processes and an assessment is therefore no required in the benthic chapter<sup>3</sup></li> <li>Impacts associated with the removal of marine growth from foundations during the maintenance phase spans several impact pathways. As such this impact has been considered within two impact pathway assessments: 1) increased SSC and sediment deposition (i.e. in relation to the deposition and smothering element) and 2) in the assessment of the introduction of artificial structures and the potential for this to extend the reef effect in the vicinity of foundations</li> </ul>	Benthic ecology	JNCC	Under discussion
The list of projects screened into the CEA in the EIA and the in-combination assessment in the HRA are appropriate	Benthic ecology	NRW, Natural England	Under discussion
The impact pathways assessed for benthic subtidal ecology (intertidal detailed separately) will not result in significant effects in EIA terms given the implementation of the measures adopted as part of Mona Offshore Wind Project	Benthic ecology	All	Under discussion

<sup>3</sup> Wording included as per the agreement log sent to the EWG. The Applicant has now included an assessment of secondary scour in Volume 2, Chapter 1: Physical processes of the Environmental Statement (Document Reference F2.1)



## MONA OFFSHORE WIND PROJECT

Area where agreement is sought	Topic	EWG member	Progress of agreement
None of the impacts on benthic intertidal IEFs at the landfall will result in significant effects, in EIA terms, given the implementation of the measures adopted as part of Mona Offshore Wind Project (including avoidance of direct impacts to clay and piddocks IEF in the intertidal)	Benthic ecology	All	Under discussion
No cumulative effects that are significant in EIA terms are predicted	Benthic ecology	All	Under discussion
The measures adopted as part of the Mona Offshore Wind Project are sufficient and no additional measures are necessary as a result of the assessment conclusions	Benthic ecology	All	Under discussion

### Summary of progress

- 1.2.2.7 The Applicant has received agreement on a number of key areas (e.g. agreement to certain aspects of the baseline characterisations, agreement on impacts scoped out). There are a number of agreements outstanding (e.g. agreement on the conclusions of the EIA and HRA) which will continue to be discussed with the EWG.

### Marine mammals

#### Overview

- 1.2.2.8 The remit and input required for the marine mammal EWG was as follows (as discussed in the first EWG). As the Mona Offshore Wind Project developed, some inputs were no longer required:
- To agree the extent of the study areas for the assessment of the Mona Offshore Wind Project alone and cumulatively with other plans and projects
  - To agree survey methodologies and extent of survey area to adequately characterise the baseline environment
  - To agree the survey data analysis methodologies and expected outputs
  - To discuss the evidence base and agree that the baseline environment information (from desktop and site-specific survey data) was appropriate for the purposes of the relevant assessment, noting any agreed limitations to the baseline data and solutions to address these limitations (e.g. identifying other evidence sources)
  - To discuss and agree the impacts to be assessed in the EIA and those that can be scoped out
  - To agree assessment methodologies and risk assessment tools for the purposes of the HRA and EIA (including designated sites)
  - To discuss and agree the scope of cumulative/in-combination assessments
  - To agree any modelling requirements, to agree the input parameters, marine mammal hearing thresholds and the project scenarios to be modelled

## MONA OFFSHORE WIND PROJECT

- To agree approach for determining LSE on marine mammal features of SACs and consideration of other potential impacts on European sites as appropriate
- To discuss any evidence to support the design of compensatory measures if an 'in principal' Habitats Regulations derogation case, this was not deemed to be required by the Applicant and EWG
- To agree appropriate avoidance, mitigation and management measures to ensure effects are reduced to an acceptable level. Discussion to include how key mitigation measures are secured in the DCO. Development of project specific mitigation will give full consideration to the mitigation hierarchy (as per Natural England 2022 advice) throughout the Evidence Plan Process and the pre-application phase
- To discuss proposals from the Applicant for environmental enhancements
- To agree proposed monitoring if applicable, which is outlined in the Offshore In-Principle Monitoring Plan (Document Reference J15).

1.2.2.9 The outline programme of meetings is outlined within Appendix C. Further details on marine mammal consultation and how it has been addressed in the EIA is presented in Volume 2, Chapter 4: Marine mammals of the Environmental Statement (Document Reference F2.4).

**Table 1.8: Marine mammal EWG consultation held to date and anticipated to take place in the pre-application phase.**

Date	Participants	Focus of consultation
17 February 2022	The Applicant, RPS, Natural England, JNCC, MMO, TWT, Cefas, NRW	<ul style="list-style-type: none"> <li>• Introduce and gain feedback on Evidence Plan</li> <li>• Discuss stakeholder comments on the survey scopes to date (i.e. prior to Evidence Plan) and any further data required</li> <li>• Update on the progress of surveys and data analysis.</li> </ul>
19 July 2022	The Applicant, RPS, Natural England, JNCC, MMO, TWT, Cefas, NRW	<ul style="list-style-type: none"> <li>• Agree the marine mammal study areas</li> <li>• Approach to baseline characterisation</li> <li>• Approach to the EIA, including impact scoping.</li> </ul>
17 November 2022	The Applicant, RPS, Natural England, JNCC, MMO, TWT, Cefas, NRW	<ul style="list-style-type: none"> <li>• Baseline characterisation</li> <li>• Approach to the underwater sound assessment and population modelling approach.</li> </ul>
09 February 2023	The Applicant, RPS, Natural England, JNCC, MMO, TWT, Cefas, NRW, IoM Defa	<ul style="list-style-type: none"> <li>• Updated baseline characterisation</li> <li>• Underwater sound modelling outputs</li> <li>• Cumulative assessment.</li> </ul>
26 June 2023	The Applicant, RPS, Natural England, JNCC, MMO, TWT, Cefas, NRW	<ul style="list-style-type: none"> <li>• To present the updated assessment and to discuss statutory consultation responses.</li> </ul>
03 August 2023	The Applicant, RPS, Manx Wildlife Trust, Manx Whale and Dolphin Watch, IoM Defa	<ul style="list-style-type: none"> <li>• To present the updated assessment and to discuss statutory consultation responses.</li> </ul>
10 October 2023	Natural England, RPS, JNCC, MMO, TWT, Cefas, NRW, IoM Defa	<ul style="list-style-type: none"> <li>• Provision of technical note with approach to addressing outstanding items for agreement.</li> </ul>

## MONA OFFSHORE WIND PROJECT

Date	Participants	Focus of consultation
05 December 2023	The Applicant, RPS, Natural England, JNCC, MMO, TWT, Cefas, NRW, IoM Defa	<ul style="list-style-type: none"> <li>Final impact assessment</li> <li>Final mitigation and monitoring requirements</li> <li>Progress to agreement.</li> </ul>

### Issues agreed

1.2.2.10 The Applicant has agreed the following areas with the EWG members, the full agreement log is presented in Appendix C.

**Table 1.9: Issues agreed with the Marine mammal EWG.**

Area where agreement is sought	EWG member	Progress of agreement
Agreement on the remit and inputs to the EWG	NRW	Agreed
	JNCC	Agreed
	Natural England	Agreed
	MMO/Cefas	Agreed
Agreement on Ways of Working document, including timescales	NRW	Agreed
	JNCC	Agreed
	Natural England	Agreed
	MMO/Cefas	Agreed
Agreement on aerial surveys with respect to marine mammals, in particular the use of an appropriate buffer around the Mona Array Area	NRW	Agreed
	Natural England	Defers to NRW
	JNCC	Agreed
	MMO/Cefas	Defers to Natural England
Agreement on extent of regional marine mammal study area to be used for providing additional context and for the purposes of CEA screening. Species-specific Management Units (Mus) have been used in the impact assessment to aid quantifying population impacts and to define reference populations.  Some disagreement with NRW regarding the appropriate CEA screening area for grey seal	NRW	Agreed
	Natural England	Agreed
	JNCC	Agreed
	MMO/Cefas	Defers to Natural England
Agreement on approach to HRA Stage 1 Screening. Agreement on extent of Regional Marine Mammal study area to be used for providing additional context and for the purposes of HRA Stage 1 screening. Species specific Mus have been used for screening with additional information provided by telemetry studies (seals) to inform which sites to screen in for consideration	NRW	Agreed
	JNCC	Agreed
	Natural England	Agreed
Agreement on approach to the baseline characterisation	NRW	Agreed
	JNCC	Agreed
Agreement on approach to underwater sound modelling	NRW	Agreed

**MONA OFFSHORE WIND PROJECT**

Area where agreement is sought	EWG member	Progress of agreement
	Natural England	No comments in agreement log
	MMO/Cefas	Agreed
Agreement that white beaked dolphin can be scoped out of the EIA and HRA	NRW	Agreed
	JNCC	Agreed
	Natural England	Agreed
	MMO/Cefas	Defers to Natural England
Agreement that the Celtic and Irish Sea harbour porpoise marine mammal management unit (HP MMMU) is an appropriate study area for harbour porpoise, minke whale and Risso's dolphin	NRW	Agreed
Agreement on approach to densities and reference populations – harbour porpoise	NRW	Agreed
	JNCC	Agreed
	Natural England	Agreed
Agreement on approach to densities and reference populations – grey seal	JNCC	Agreed
	Natural England	Agreed
Agreement on approach to densities and reference populations – bottlenose dolphin	NRW	Agreed
	JNCC	Agreed
	Natural England	Agreed
	Cefas	Defer to Natural England
Agreement on approach to densities and reference populations – Risso's dolphin, short beaked dolphin, minke whale	NRW	Agreed
	JNCC	Agreed
	Natural England	Agreed
Agreement on the CEA screening area for site investigation surveys and use of a maximum number of site investigation surveys occurring concurrently	NRW	Agreed
	JNCC	Defer to NRW
	Natural England	Agreed
Agreement on the use of the area-based approach for HRA based on Effective Deterrent Range (EDR) and 143 Db threshold	JNCC	Agreed
	NRW	Agreed
	Natural England	Agreed
Agreement on presenting a 6-year time step in the iPCoD model, assessing temporal maximum design scenario and to add in additional cumulative projects	JNCC	Agreed
	NRW	Agreed
	Natural England	Agreed
There will be no AEoI on SACs with marine mammal features for the project alone.	JNCC	Agreed
	NRW	Agreed
	MMO/Cefas	Agreed

## MONA OFFSHORE WIND PROJECT

Area where agreement is sought	EWG member	Progress of agreement
Approach to present both with and without ADD and to base the conclusions of the assessment on the impacts which take into account any designed-in measures, including the use of ADDs	JNCC	Agreed

### Issues under discussion

1.2.2.11 The following areas are still under discussion with the EWG members – the full agreement log is presented in Appendix C.

**Table 1.10: Issues still under discussion with the Marine mammal EWG.**

Area where agreement is sought	EWG member	Progress of agreement
Agreement on approach to the baseline characterisation.	Natural England	Under discussion
	MMO/Cefas	Defers to Natural England
Agreement on approach to underwater sound modelling.	JNCC	Under discussion
Other than unexploded ordnance (UXO) impacts, there will be no significant effects on marine mammal receptors in EIA terms for the project alone.	All	Under discussion
There will be no AEoI on SACs with marine mammal features for the project alone.	NRW, Natural England	Under discussion
	MMO/Cefas	Defer to Natural England
Other than piling and UXO impacts, there will be no significant effects on marine mammal receptors in EIA terms for the project cumulatively.	All	Under discussion
Other than piling impacts, there will be no AEoI on SACs with marine mammal features for the project in-combination with other plans and projects.	All	Under discussion
For UXO impacts, although a significant effect (injury) on harbour porpoise is predicted any such effects will be managed and avoided through measures set out in the MMMP, which will be agreed with stakeholders post consent.	All	Under discussion
For piling impacts, although a significant cumulative effect (in EIA terms)/in-combination AEoI (in HRA terms) is predicted on bottlenose dolphin, any such effects will be managed and avoided through measures set out in the Underwater Sound Management Strategy, which will be agreed with stakeholders post consent.	All	Under discussion
The mitigation and management measures are appropriate to ensure all other significant effects and AEoI are avoided for marine mammal receptors, including the Measures to Minimise Impacts to Marine Mammals and Rafting Birds.	All	Under discussion
Approach to present both with and without ADD and to base the conclusions of the assessment on the impacts which take into account any designed-in measures, including the use of ADDs	Natural England	Not agreed

## Summary of progress

- 1.2.2.12 The Applicant has received agreement on a number of key areas (e.g. agreement to the baseline characterisation, agreement on species scoped out and agreement on the densities and reference populations on which the assessment is based). There are a number of agreements outstanding (e.g. agreement on the conclusions of the EIA and HRA) which will be discussed with the EWG ahead of the application for consent.

## Offshore ornithology

### Overview

- 1.2.2.13 The remit and input required for the offshore ornithology EWG is as follows (as discussed in the first EWG). As the Mona Offshore Wind Project developed, some inputs were no longer required:
- To agree survey methodologies and extent to adequately characterise the baselines and to address key issues in relation to offshore ornithological features, particularly in relation to features of SPAs, potential SPAs (pSPAs) and Ramsar sites if appropriate, rare and vulnerable birds (as listed on Annex I of the Birds Directive), and for regularly occurring migratory species
  - To agree the survey data analysis methodologies and expected outputs
  - To agree any modelling requirements, parameters and methodologies
  - To discuss the evidence base and agree that the baseline environment information (from desktop and site specific survey data) was appropriate for the purposes of the relevant assessments, noting any agreed limitations to the baseline data and solutions to address these limitations (e.g. identifying other evidence sources).
  - To discuss and agree the scope of the assessments of potential effects on key species, including those that have been be scoped out of the assessment
  - To agree analytical and assessment methodologies and risk assessment tools for the purposes of the HRA and EIA (including SSSIs)
  - To discuss and agree the scope of cumulative/in-combination assessments
  - To agree approach for determining LSE on European Sites, and consideration of other potential impacts on European sites as appropriate
  - To discuss any evidence to support the design of compensatory measures if an 'in principal' Habitats Regulations derogation case, this was not deemed to be required by the Applicant and EWG
  - To agree appropriate avoidance, mitigation and management measures to ensure effects are reduced to an acceptable level. Discussion to include how key mitigation measures are secured in the DCO. Development of Mona Offshore Wind Project specific mitigation has given full consideration to the mitigation hierarchy (as per Natural England 2022 advice) throughout the Evidence Plan Process and the pre-application phase
  - To discuss proposals from the Applicant for environmental enhancements
  - To agree proposed monitoring if applicable, which is outlined in the Offshore In-Principle Monitoring Plan (Document Reference J15).



## MONA OFFSHORE WIND PROJECT

1.2.2.14 The outline programme of meetings is outlined within Table 1.11 and full meeting minutes and any additional information has been included within Appendix D. Further details on offshore ornithology consultation and how it has been addressed in the EIA is presented in Volume 2, Chapter 5: Offshore ornithology of the Environmental Statement (Document Reference F2.5).

**Table 1.11: Offshore ornithology EWG consultation held to date and anticipated to take place.**

Date	Participants	Focus of consultation
18 February 2022	The Applicant, RPS, NRW, Natural England, RSPB, MMO, JNCC, TWT	<ul style="list-style-type: none"> <li>Introduce and gain feedback on Evidence Plan</li> <li>Discuss stakeholder comments on the survey scopes to date (i.e. prior to Evidence Plan) and any further data required</li> <li>Update on the progress of surveys and data analysis.</li> </ul>
27 May 2022	The Applicant, RPS, NRW, Natural England, RPS, RSPB, MMO, JNCC, TWT	<ul style="list-style-type: none"> <li>Provision of technical notes outlining the Applicants approach to the offshore ornithology baseline characterisation, displacement and Collision Risk Modelling (CRM) technical reports.</li> </ul>
13 July 2022	The Applicant, RPS, NRW, Natural England, RSPB, MMO, JNCC, TWT	<ul style="list-style-type: none"> <li>Agree the approach to baseline characterisation, cumulative study area to agree the approach to EIA, including impact scoping</li> <li>Presentation of the interim baseline characterisation and discuss and agree the approach to data analyses, including relevant modelling techniques and parameters.</li> </ul>
30 November 2022	The Applicant, RPS, NRW, Natural England, RSPB, MMO, JNCC, TWT	<ul style="list-style-type: none"> <li>To agree key receptor species and to present the interim assessment of impacts</li> <li>Relevant regional populations and protected sites/qualifying interests for assessment</li> <li>Approach to HRA Stage 1 screening.</li> </ul>
23 February 2023	The Applicant, RPS, NRW, Natural England, RSPB, MMO, JNCC, TWT, IoM Defa	<ul style="list-style-type: none"> <li>To agree key receptor species and to present the interim assessment of impacts</li> <li>Relevant regional populations and protected sites/qualifying interests for assessment and approach to HRA Stage 1 screening</li> <li>Discuss and agree scope of cumulative impact assessment and transboundary considerations</li> <li>To discuss and agree population assessment approaches and thresholds for LSE and integrity.</li> </ul>
05 May 2023	Natural England, NRW, Natural England, RSPB, MMO, JNCC, TWT, IoM Defa	<ul style="list-style-type: none"> <li>Provision of the updated methodology for offshore ornithology HRA Stage 1 screening and the ISAA.</li> </ul>
30 June 2023	The Applicant, RPS, Natural England, NRW, RSPB, MMO, JNCC, TWT, IoM Defa	<ul style="list-style-type: none"> <li>Update to baseline characterisation for complete baseline data set</li> <li>Amendments to previously agreed approaches</li> <li>Statutory consultation responses.</li> </ul>
10 July 2023	Natural England, NRW, RSPB, MMO, JNCC, TWT, IoM Defa	<ul style="list-style-type: none"> <li>Provision of the technical note presenting the power analysis undertaken at the request of the EWG.</li> </ul>



## MONA OFFSHORE WIND PROJECT

Date	Participants	Focus of consultation
19 October 2023	The Applicant, RPS, Natural England, NRW, RSPB, MMO, JNCC, TWT, IoM Defa	<ul style="list-style-type: none"> <li>Presentation of updated baseline characterisation</li> <li>Impact assessment for the Environmental Statement.</li> </ul>
23 November 2023	NRW, Natural England, RSPB, MMO, JNCC, TWT, IoM Defa	<ul style="list-style-type: none"> <li>Provision of the technical note outlining the Applicants position regarding using species specific avoidance rates from Ozsanlav-Harris <i>et al.</i> (2023).</li> <li>Provision of the technical note outlining the final updated methodology for offshore ornithology HRA Stage 1 screening and the ISAA.</li> </ul>
29 November 2024	NRW, Natural England, RSPB, MMO, JNCC, TWT, IoM Defa	<ul style="list-style-type: none"> <li>Provision of the technical note outlining the Applicants position regarding calculating the regional breeding population.</li> </ul>
08 December 2023	The Applicant, RPS, NRW, Natural England, RSPB, MMO, JNCC, TWT, IoM Defa	<ul style="list-style-type: none"> <li>Presentation of final impact assessment</li> <li>Comments on draft Environmental Statement</li> <li>Final mitigation and monitoring requirements.</li> </ul>
26 January 2024	NRW, Natural England, RSPB, MMO, JNCC, TWT, IoM Defa	<ul style="list-style-type: none"> <li>Joint response from the Mona, Morgan Generation and Morecambe Generation Projects to the 'Proposed methodology for 'gap-filling' the Irish Sea R4 cumulative &amp; in-combination assessments' advice from Natural England.</li> </ul>

### Issues agreed

1.2.2.15 The Applicant has agreed the following areas with the EWG members, the full agreement log is presented in Appendix D.

**Table 1.12: Issues agreed with the Offshore ornithology EWG.**

Area where agreement is sought	EWG member	Progress of agreement
Agreement on the remit and inputs to the EWG	NRW	Agreed
	JNCC	Agreed
	Natural England	Agreed
Agreement on Ways of Working document, including timescales	NRW	Agreed
	JNCC	Agreed
	Natural England	Agreed
Agreement on broad approach to aerial surveys	NRW	Agreed
	JNCC	Agreed
	Natural England	Agreed
Agreement on broad approach to characterisation for the Mona Offshore Cable Corridor using desktop data sources only	NRW	Agreed
	JNCC	Agreed
	Natural England	Agreed
Agreement on the approach to baseline characterisation	JNCC	Agreed

## MONA OFFSHORE WIND PROJECT

Area where agreement is sought	EWG member	Progress of agreement
Agreement on the approach to displacement	NRW	Agreed
	Natural England	Agreed
	JNCC	Agreed
Agreement to the approach to the approach to CRM	NRW	Agreed
	Natural England	Agreed
	JNCC	Agreed
Agreement on the approach to identification of sites and features in the HRA Stage 1 Screening	NRW	Agreed
	Natural England	Agreed
	JNCC	Agreed
Agreement on approach to HRA Stage 1 Screening using outputs for CRM, displacement assessment and associated apportioning	NRW	Agreed
	Natural England	Agreed
	JNCC	Agreed
Agreement on the provision, scope and results of the power analysis	NRW	Agreed
	Natural England	Agreed
	JNCC	Agreed
Agreement on the methodology used to improve auk ID rates	NRW	Agreed
	Natural England	Agreed
	JNCC	Agreed
Agreement on approach to CRM for migratory seabirds	NRW	Agreed
	Natural England	Agreed
	JNCC	Agreed
Agreement on approach to estimating regional breeding populations	NRW	Agreed
	Natural England	Agreed
Agreement on proposed foraging ranges to be used in EIA and for apportioning impacts to designated sites	NRW	Agreed
	Natural England	Agreed
	JNCC	Agreed
The Offshore EMP will include a timing restriction of no offshore export cable installation during the period 01 November to 31 March within the Liverpool Bay SPA	NRW	Agreed
	Natural England	Agreed
	JNCC	Agreed
Use of the latest species-specific avoidance rates from Ozsanlav-Harris et al. (2023) in the non-migratory CRM.	NRW	Agreed
	Natural England	Agreed
	JNCC	Agreed

## MONA OFFSHORE WIND PROJECT

### Issues under discussion

1.2.2.16 The following areas are still under discussion with the EWG members – the full agreement log is presented in Appendix D.

**Table 1.13: Issues under discussion with the Offshore ornithology EWG.**

Area where agreement is sought	EWG member	Progress of agreement
Agreement on broad approach to aerial surveys	RSPB	Under discussion
Agreement on approach to estimating regional breeding populations	JNCC	Under discussion
Agreement on approach to cumulative assessment for projects where impact magnitudes are unavailable	All	Under discussion
There will be no significant effects on ornithology receptors in EIA terms for the project alone	All	Under discussion
There will be no AEol on SPAs with ornithology features for the project alone	All	Under discussion
There will be no significant effects on ornithology receptors in EIA terms for the project cumulatively with other plans and projects	All	Under discussion
There will be no AEol on SPAs with ornithology features for the project in-combination with other plans and projects	All	Under discussion
The mitigation and management measures are appropriate to ensure significant effects and AEol are avoided for marine ornithological receptors	All	Under discussion
Trenchless techniques at the Mona landfall will not be included in this restriction but vessel movements will be managed to minimise effects on features of Liverpool Bay SPA via the Measures to Minimise Impacts to Marine Mammals and Rafting Birds	All	Under discussion

### Summary of progress

1.2.2.17 The Applicant has received agreement on a number of key areas (e.g. agreement to the baseline characterisation, agreement on approach to displacement and CRM analysis). There are a number of agreements outstanding (e.g. agreement on the conclusions of the EIA and HRA) which will be discussed with the EWG ahead of the application for consent.

## Onshore ecology

### Overview

- 1.2.2.18 The remit and input required for the onshore ecology EWG is as follows:
- To agree the scope and extent of survey methodologies, to ensure that the baselines are adequately characterised and to address key issues in relation to onshore ecology and onshore and intertidal birds, particularly in relation to protected habitats and species
  - To agree the methodologies for analysing the survey data and the expected outputs
  - To discuss key survey findings and how these were used to inform the assessment, including mitigation requirements
  - To discuss the evidence base and agree that the baseline environment information (from desktop and site-specific survey data) was appropriate for the purposes of the relevant assessments, noting any agreed limitations to the baseline data and solutions to address these limitations (e.g. identifying other evidence sources)
  - To discuss and agree the scope of the assessments of potential effects on onshore ecological receptors including all protected sites
  - To agree assessment methodologies and risk assessment approaches for the purposes of the EIA
  - To discuss and agree the scope of cumulative/in-combination assessments
  - To agree appropriate avoidance, mitigation and management measures to ensure effects are reduced to an acceptable level. Discussion to include how key mitigation measures are secured in the DCO. Development of Mona Offshore Wind Project specific mitigation has given full consideration to the mitigation hierarchy (as per Natural England 2022 advice) throughout the Evidence Plan Process and the pre-application phase
  - To discuss and agree the approach for environmental enhancement assessment (i.e. the use of the Defra metric or if a bespoke method is required), the potential to exclude habitats from the assessment (e.g. arable land), and the value of key habitats
  - To discuss local enhancement priorities, particularly for the Onshore Substation
  - To discuss and agree proposed avoidance, mitigation, enhancement and monitoring measures, outlined in the Landscape and Ecology Management Plan (Document Reference J22).
- 1.2.2.19 The outline programme of meetings is outlined within Appendix E. Further details with respect to onshore ecology and onshore and intertidal ornithology consultation and how it has been addressed in the EIA is presented in Volume 3, Chapter 3: Onshore ecology and Volume 3, Chapter 4: Onshore and intertidal ornithology of the Environmental Statement (Document Reference F3.3 and F3.4).

## MONA OFFSHORE WIND PROJECT

**Table 1.14: Onshore ecology and onshore and intertidal ornithology EWG meetings.**

Date	Participants	Focus of Meeting
16 June 2022	The Applicant, RPS, NRW, Denbighshire County Council, RSPB	<ul style="list-style-type: none"> <li>Introduce and gain feedback on Evidence Plan</li> <li>Discuss Natural England and NRW comments on the survey scopes to date (i.e. prior to Evidence Plan) and the survey strategy</li> <li>Update on the progress of surveys and data analysis.</li> </ul>
08 December 2022	The Applicant, RPS, NRW, Conwy County Borough Council, NRW, RSPB,	<ul style="list-style-type: none"> <li>Meeting to agree the approach to baseline characterisation, including relevant study areas</li> <li>Discuss comments within Scoping Opinion</li> <li>Discuss approach to the PEIR</li> <li>Update on progress of surveys.</li> </ul>
24 April 2023	The Applicant, RPS, NRW, Conwy County Borough Council, RSPB, NRW, Amphibian and Reptile Conservation Trust (ARC)	<ul style="list-style-type: none"> <li>Meeting to discuss the methodologies and proposed locations of the protected species surveys</li> <li>Discuss assumptions on presence/absence of key receptor species</li> <li>Meeting to discuss approach to biodiversity benefit requirements</li> </ul>
19 July 2023	The Applicant, RPS, NRW, Conwy County Borough Council, Denbighshire County Council, RSPB, NRW, ARC,	<ul style="list-style-type: none"> <li>Discussed key technical, engineering, and environmental work undertaken following the previous EWG, including key design changes since publication of the PEIR</li> <li>Discussed the approach to onshore ecology and onshore and intertidal ornithology surveys, including the survey programme, survey progress to date and notable interim survey results</li> <li>Discussed mitigation requirements, including measures to be incorporated into the Outline Code of Construction Practice (Document Reference J26), Outline Landscape and Ecological Management Plan (Document Reference J22)</li> <li>Discussed relevant consultation responses received in response to statutory consultation (section 42) and how these would be considered.</li> </ul>
04 October 2023	The Applicant, RPS, NRW, Conwy County Borough Council, Denbighshire County Council, RSPB, NRW, Woodland Trust	<ul style="list-style-type: none"> <li>Discussed key technical, engineering, and environmental work undertaken, including key design changes since the previous EWG</li> <li>Discussed the approach to onshore ecology and onshore and intertidal ornithology surveys, including the survey programme, survey progress to date and notable interim survey results</li> <li>Discussed mitigation requirements, including measures to be incorporated into the Outline Code of Construction Practice (Document Reference J26), Outline Landscape and Ecological Management Plan (Document Reference J22)</li> <li>Discussed the approach to landscape and ecology planting at the Onshore Substation, including key design/environmental constraints and visualisations.</li> </ul>
08 December 2023	The Applicant, RPS, NRW, Conwy County Borough Council	<ul style="list-style-type: none"> <li>Discussed key technical, engineering, and environmental work undertaken, including key design changes since the previous EWG</li> <li>Discussed the approach to onshore ecology and onshore and intertidal ornithology surveys, including the survey programme, survey progress to date and notable interim survey results</li> <li>Discussed mitigation requirements, including measures to be incorporated into the Outline Code of Construction Practice (Document Reference J26) and Outline Landscape and Ecological Management Plan (Document Reference J22).</li> </ul>

## MONA OFFSHORE WIND PROJECT

### Issues agreed

1.2.2.20 The Applicant has agreed the following areas with the EWG members, the full agreement log is presented in Appendix E. Only NRW, Conwy County Borough Council, Denbighshire County Council, RSPB, ARC, WG provided responses in the agreement logs circulated after each EWG meeting.

**Table 1.15: Issues agreed with the Onshore ecology and onshore and intertidal ornithology EWG.**

Area where agreement is sought	EWG member	Progress of agreement
The remit and inputs to the onshore ecology and onshore and intertidal ornithology EWG	RSPB	Agreed
Agreement on Ways of Working document, including timescales	RSPB	Agreed
Agreement on the desk top data sources to be used for baseline characterisation	RSPB	Agreed
Agreement on the onshore ecology and onshore and intertidal ornithology study areas for baseline characterisation, field surveys and assessment	RSPB	Agreed
Agreement that the assessment for onshore ecology and onshore and intertidal ornithology will include assumptions regarding the presence/absence of protected based on desk-based analysis and extended phase 1 habitat surveys	RSPB	Agreed
Agreement that population size class assessment surveys for Great Crested Newt (GCN) do not have to be undertaken for ponds at the Onshore Substation, which are subject to ongoing monitoring associated with previous developments, or ponds that have been surveyed within the last two years (at the time of DCO application submission)	NRW	Agreed
	Conwy County Borough Council	Agreed
	RSPB	Agreed
Agreement on onshore ecology survey methodologies, including the location and geographic extent of surveys for the following: aquatic invertebrates; badger; GCN; hazel dormouse; National Vegetation Classification (NVC); otter; water vole; reptile; terrestrial invertebrates; and Invasive and Non-native Species (INNS)	NRW	Agreed
	Conwy County Borough Council	Agreed
	RSPB	Agreed
Agreement that the proposed approach for sharing protected survey findings via Field Maps is appropriate.	NRW	Agreed
	Conwy County Borough Council	Agreed
	RSPB	Agreed

### Issues under discussion

1.2.2.21 The following areas are still under discussion with the EWG members – the full agreement log is presented in Appendix E.

## MONA OFFSHORE WIND PROJECT

**Table 1.16: Issues under discussion with the Onshore ecology and onshore and intertidal ornithology EWG.**

Area where agreement is sought	EWG member	Progress of agreement
Agreement on the provision of two years of survey data for the purposes of baseline characterisation and assessment of intertidal and breeding birds	NRW	Under discussion
	Conwy County Borough Council	Under discussion
	Denbighshire County Council	Under discussion
	RSPB	Under discussion
	ARC	Under discussion
Agreement on the provision of one year of survey data for the purposes of baseline characterisation and assessment of wintering and passerine raptors	NRW	Under discussion
	Conwy County Borough Council	Under discussion
	Denbighshire County Council	Under discussion
	RSPB	Under discussion
	ARC	Under discussion
Agreement on the outline mitigation measures to be included in the Breeding Bird Protection Plan, which is to be incorporated into the Outline Landscape and Ecological Management Plan (Document Reference J22)	NRW	Under discussion
	Conwy County Borough Council	Under discussion
	Denbighshire County Council	Under discussion
	RSPB	Under discussion
	ARC	Under discussion
Agreement on the utilisation of badger sett monitoring surveys for the purpose of identifying the presence/absence of polecat, particularly within the vicinity of the Onshore Substation	NRW	Under discussion
	Conwy County Borough Council	Under discussion
	Denbighshire County Council	Under discussion
	RSPB	Under discussion
	ARC	Under discussion
Agreement on the proposed approach to the assessment of GCN, including the requirement for further surveys post-application in 2024 to inform an Environmental Statement addendum and satisfy the requirements of relevant European Protected Species (EPS) mitigation licenses	NRW	Under discussion
	Conwy County Borough Council	Under discussion
	Denbighshire County Council	Under discussion
	RSPB	Under discussion
	ARC	Under discussion
Agreement on the proposed approach to the assessment of hazel dormouse, including the requirement for further surveys post-application in 2024 to inform an Environmental Statement addendum and satisfy the requirements of relevant EPS mitigation licenses	NRW	Under discussion
	Conwy County Borough Council	Under discussion
	Denbighshire County Council	Under discussion
	RSPB	Under discussion
	ARC	Under discussion
Agreement on the provision of one year of survey data for the purposes of baseline characterisation and assessment of wintering and passerine raptors (having reviewed the technical note shared after the 4 <sup>th</sup> EWG).	NRW	Under discussion
	Conwy County Borough Council	Under discussion
	Denbighshire County Council	Under discussion
	RSPB	Under discussion



## MONA OFFSHORE WIND PROJECT

Area where agreement is sought	EWG member	Progress of agreement
Agreement on the proposed approach to the assessment of bats, badgers, GCN and hazel dormouse including the requirement for further surveys in 2024 to inform an Environmental Statement addendum (post-application) and satisfy the requirements of relevant EPS mitigation licenses	ARC	Under discussion
	NRW	Under discussion
	Conwy County Borough Council	Under discussion
	Denbighshire County Council	Under discussion
	Welsh Government	Under discussion
	Woodland Trust	Under discussion
	RSPB	Under discussion
Agreement that the onshore ecology and onshore and intertidal ornithology EWG are happy to receive and review the Draft GCN Mitigation Strategy on the 31 October 2023 and provide feedback to the Mona Offshore Wind Project by 30 November 2023	ARC	Under discussion
	NRW	Under discussion
	Conwy County Borough Council	Under discussion
	Denbighshire County Council	Under discussion
	Welsh Government	Under discussion
	Woodland Trust	Under discussion
	RSPB	Under discussion
Agreement on the proposal to exclude the Onshore Cable Corridor from further GCN surveys	ARC	Under discussion
	NRW	Under discussion
	Conwy County Borough Council	Under discussion
	Denbighshire County Council	Under discussion
	Welsh Government	Under discussion
	Woodland Trust	Under discussion
	RSPB	Under discussion
Agreement on the initial proposals for temporary and permanent mitigation areas at the Onshore Substation	ARC	Under discussion
	NRW	Under discussion
	Conwy County Borough Council	Under discussion
	Denbighshire County Council	Under discussion
	Welsh Government	Under discussion
	Woodland Trust	Under discussion
	RSPB	Under discussion
Agreement on whether one year's survey data for the wintering passerine and raptors is acceptable after reviewing the technical note shared on the 18 September 2023	ARC	Under discussion
	NRW	Under discussion
	Conwy County Borough Council	Under discussion
	Denbighshire County Council	Under discussion
	Welsh Government	Under discussion
	Woodland Trust	Under discussion
	RSPB	Under discussion
	ARC	Under discussion
	NRW	Under discussion
	Conwy County Borough Council	Under discussion
	Denbighshire County Council	Under discussion
	Welsh Government	Under discussion
	Woodland Trust	Under discussion
	RSPB	Under discussion

## MONA OFFSHORE WIND PROJECT

Area where agreement is sought	EWG member	Progress of agreement
Agreement on the general measures to be included in the BPP	ARC	Under discussion
	NRW	Under discussion
	Conwy County Borough Council	Under discussion
	Denbighshire County Council	Under discussion
	Welsh Government	Under discussion
	Woodland Trust	Under discussion
	RSPB	Under discussion
Agreement on the general measures to be included in the Outline GCN Mitigation Strategy for the Mona Offshore Wind Project	ARC	Under discussion
	NRW	Under discussion
	Conwy County Borough Council	Under discussion
	Denbighshire County Council	Under discussion
	Welsh Government	Under discussion
	Woodland Trust	Under discussion
	RSPB	Under discussion
	ARC	Under discussion

### Summary of progress

- 1.2.2.22 Applicant has received agreement on a number of key areas, including desktop data sources, study areas for baseline characterisation and survey methodologies. The only outstanding items under discussion with the EWG relate to the number of years of survey data required for intertidal and breeding birds and wintering and passerine raptors; measures to be included in the Breeding Bird Protection Plan, requirements for post application surveys; and measures to be included in the Outline GCN Mitigation Strategy.

## 1.3 Engagement forums

### 1.3.1 Marine Navigation Engagement Forum

#### Aims of the MNEF

- 1.3.1.1 The objectives of the MNEF are to provide a platform for the exchange of information, knowledge and experience, allowing marine developers and relevant shipping and navigation stakeholders to coexist in the marine environment.
- 1.3.1.2 The overarching strategy was to establish and actively maintain a structured basis by which the project and relevant shipping and navigation stakeholders engage with each other and share information, evidence and feedback. The objectives were:
1. To allow marine developers the opportunity to present their plans for development of offshore projects to representatives of the shipping and navigation stakeholders

## MONA OFFSHORE WIND PROJECT

2. To enable the Mona Offshore Wind Project to share details on the proposed evidence base (quantitative and qualitative data, material and evidence) being used for consideration of shipping and navigation within the development of the Mona Offshore Wind Project. To also enable shipping and navigation stakeholders to share and contribute relevant data and evidence to the Mona Offshore Wind Project
3. To enable the Mona Offshore Wind Project to share details on the proposed methodologies being used for consideration of shipping and navigation within the development of the Mona Offshore Wind Project and consider comments that may be provided by shipping and navigation stakeholders
4. To provide shipping and navigation stakeholders the opportunity to put forward suggestions and observations, to promote better understanding of their existing and planned future operations, specifically in the areas to be developed
5. To encourage dialogue on key concerns and issues, for both shipping and navigation stakeholders and marine developers
6. To quantify the degree to which co-existence can be reasonably delivered and to discuss the principles and methodological processes to be applied to the development of mitigation options
7. To discuss co-existence offshore working practices and communication from both the developer's and the shipping and navigation stakeholders' point of view, where required
8. To develop potential mitigation options and solutions to mitigate/minimise/manage impact the marine development may cause to shipping and navigation stakeholders
9. To consider potential cumulative effects of marine developments and other appropriate marine stakeholders
10. To maintain a formal record of discussions between the interested parties in order to provide evidence to regulatory bodies and others on areas of agreement and disagreement
11. To communicate information through MNEF meetings to a wider audience in the organisations represented.

1.3.1.3 The MNEF aimed to focus on matters which relate to:

- Risk to safety of marine operations and navigation
- Impact on marine operations and navigation.

1.3.1.4 The MNEF aimed to ensure that relevant shipping and navigation stakeholders and marine developers views and needs are discussed and considered during the pre-construction, construction, operations and maintenance, and decommissioning phases of the Mona Offshore Wind Project.

### **The MNEF process**

1.3.1.5 The MNEF included key user groups and organisations which are identified as having potential shipping and navigation interface with the Mona Offshore Wind Project. Interests of the fishing industry will be represented and co-ordinated through the Commercial Fisheries Liaison Officer (CFLO) and are discussed in more detail in

## MONA OFFSHORE WIND PROJECT

section 1.4.1. The MNEF met regularly during the pre-application phase to complete key tasks, which included:

- Agree the existing baseline information and identify other relevant datasets to use
- Agree maximum design parameters for the assessment(s)
- Agree methods for impact assessment(s) (including where possible interpretation of impact and levels of significance)
- Discussions on key potential impacts
- Agree on methods employed to determine significance of effect
- Provide feedback on key areas and progress in each topic area
- Looking ahead to submission targets.

1.3.1.6 The MNEF meetings provided an opportunity for stakeholders to discuss, provide feedback and advice on key project updates. A draft of the meeting minutes, and the slide pack from the meetings, was shared with all members for comment prior to a final version being issued. Comments on the draft meeting minutes were required within two weeks of the draft minutes being issued and the aim was to issue final minutes within two weeks thereafter.

### Roles and responsibilities of the MNEF

1.3.1.7 The MNEF outlined key user groups and organisations which are identified as having potential shipping and navigation interface with the Mona Offshore Wind Project and are invited into the MNEF, presented in Table 1.17. All organisations were asked to commit to ensuring, insofar as is reasonable and practical, consistent representation at meetings to aid continuity and maximise value and to take individual responsibility for delivering actions within agreed timescales.

**Table 1.17: Participants in the MNEF process.**

User group	Organisation
Aggregate Industry	Boskalis
Commercial Navigation Users	WS Mezeron
Emergency Service	Lancashire Fire And Rescue
Ferry Operator	Isle of Man Steam Packet Company Limited (IoMSPC)
Ferry Operator	Seatruck Group
Ferry Operator	Stena Line
Ferry Operator	P&O Ferries
Fishing Industry	Anglo-North Irish Fish Producers Organisation (ANIFPO)
Fishing Industry	Isle of Man Fishermen
Fishing Industry	Irish South & East Fish Producers Organisation (IS&EFPO)
Fishing Industry	National Federation of Fishermen's Organisations (NFFO)
Fishing Industry	Northern Ireland Fish Producers' Organisation (NIFPO)
Fishing Industry	Scottish Fishermen's Federation (SFF)

## MONA OFFSHORE WIND PROJECT

User group	Organisation
Fishing Industry	Scottish White Fish Producers Association (SWFPA)
Fishing Industry	Sea-Fisheries Protection Authority (SFPA)
Fishing Industry	Offshore Fisheries Liaison Officer (OFLO)
Fishing Industry	Welsh Fishermen's Association - Cymdeithas Pysgotwyr Cymru,
Fishing Industry	West Coast Sea Products Ltd
Governmental Department	Marine Management Organisation (MMO)
Governmental Department	Ministry of Defence (MOD)
Marine Developers	Floatation Energy
Marine Developers	Orsted
National Body (Recreation)	Royal Yachting Association (RYA)
National Body (Recreation)	Cruising Association
National Institution	Royal National Lifeboat Institution
Oil & Gas Operators	ENI
Oil & Gas Operators	Harbour Energy
Oil & Gas Operators	Spirit Energy
Project Team	bp and EnBW (Project Development Partners)
Project Team	RPS (Project EIA and HRA lead)
Project Team	NASH Maritime (Project shipping and navigation consultant)
Port Operators	ABP
Port Operators	Belfast Harbour
Port Operators	Dublin Port
Port Operators	Peel Ports
Port Operators	Port of Mostyn
Port Operators	Warrenpoint Harbour
Statutory Authority	Maritime and Coastguard Agency (MCA)
Statutory Authority	His Majesty's Maritime Coastguard (HMCG)
Statutory Authority	Trinity House Lighthouse Service (TH)
Statutory Authority	Northern Lighthouse Board
Statutory Authority	North Western Inshore Fisheries And Conservation Authority (NW IFCA)
Trade Association	International Chamber of Shipping
Trade Association	Irish Chamber of Shipping
Trade Association	UK Chamber of Shipping

## MONA OFFSHORE WIND PROJECT

- 1.3.1.8 Other individuals or organisations were identified as agreed from time to time by the MNEF for the purpose of briefing, sharing knowledge or to seek directly any views or information relative to the business of the MNEF. These included, for example, Representatives of District or County Councils, and local or national government.
- 1.3.1.9 There was no third party right to attend the MNEF meetings, although members carefully considered any request to put a view directly to the MNEF which concerned maritime navigation. The MNEF, as a whole, had the ability to invite individuals or bodies to attend meetings for the purpose of briefing, sharing knowledge or to seek directly any views or information relative to the business of the MNEF.

### The project team

- 1.3.1.10 The Mona Offshore Wind Project appointed NASH Maritime Ltd to establish and maintain a MNEF for relevant maritime stakeholders. The forum also engaged relevant government, regulatory agencies and statutory consultees. NASH Maritime Ltd. had the following responsibilities:
- Administer stakeholder consultation log as a factual record of meetings
  - Liaise with stakeholders/attendees to disseminate meetings
  - Collate meeting materials/disseminate pre-meeting
  - Facilitate meetings and progress the meeting agenda
  - Provide records of meetings including meeting minutes.

### MNEF consultation

#### Overview

- 1.3.1.11 The purpose of the MNEF was to provide a platform for the exchange of information, knowledge and experience that will enable marine developers, and relevant shipping and navigation stakeholders to coexist in the marine environment.
- 1.3.1.12 The outline programme of meetings is outlined within Table 1.18 and full meeting minutes and any additional information has been included within Appendix F.

**Table 1.18: MNEF consultation held to date and anticipated to take place in the pre-application phase.**

Date	Participants	Focus of consultation
MNEF 1 10 November 2021	The Applicant, RPS, Seatruck Ferries, IoMSPC, Stena Line, Spirit Energy, Conwy Fields, Harbour Energy, Boskalis Westminster, CFLO, Irish Chamber of Shipping, Cobra – Flotation-Energy, Peel Ports, ABP, Belfast Harbour Commissioners, The Port of Mostyn, MCA, Trinity House, NASH Maritime	<ul style="list-style-type: none"> <li>• Project introduction and proposed approach</li> <li>• Site selection in relation to shipping and navigation constraints</li> <li>• Impacts of COVID-19 on data collection</li> <li>• Impacts to ferry operators (safety and commercial)</li> <li>• Relation of impacts on ferry routes with regulation and guidance</li> <li>• Sensitivity of ferry operator schedules.</li> </ul>

## MONA OFFSHORE WIND PROJECT

Date	Participants	Focus of consultation
MNEF 2 06 May 2022	The Applicant, RPS, Seatruck Ferries, IoMSPC, Stena Line, Spirit Energy, Conwy Fields, Harbour Energy, Boskalis Westminster, CFLO, UK Chamber of Shipping, Cobra – Floatation Energy, Peel Ports, ABP, Belfast Harbour Commissioners, Port of Holyhead, The Port of Mostyn, MMO, MOD, Trinity House, NASH Maritime	<ul style="list-style-type: none"> <li>• Project update</li> <li>• Cumulative impacts of multiple projects on ferry operations</li> <li>• How the cumulative impacts will be assessed or examined</li> <li>• Impacts of projects on Isle of Man economy/society</li> <li>• Extent of incident data</li> <li>• Safety of navigating in gaps</li> <li>• Consequences of allisions with wind turbines.</li> </ul>
MNEF 3 10 October 2022	The Applicant, RPS, Royal Haskoning DHV, Flotation Energy, IoM Department of Infrastructure, Seatruck Ferries, IoMSPC, Cruising Association, Stena Line, Spirit Energy, Harbour Energy, CFLO, Kirkcudbright, UK Chamber of Shipping, Peel Ports, RYA, MCA, Trinity House, NASH Maritime (in addition approximately 5 MNEF attendees attended on MS Teams as 'unknown user')	<ul style="list-style-type: none"> <li>• Project update</li> <li>• Application process</li> <li>• Approach to cumulative assessment</li> <li>• Introduction to Morgan/Morecambe combined transmission project.</li> </ul>
MNEF 4 18 January 2023	The Applicant, RPS, RWE, Royal Haskoning DHV, SWFPA, Cairn Risk, Cruising Association, Floatation Energy, IoM Department of Infrastructure, IS&EFPO, NIFPO, Harbour Energy, MMO, MOD, IoMSPC, MCA, Orsted, Port of Mostyn, Peel Ports, RYA, Seatruck Ferries, Spirit Energy, Stena Line, CFLO, UK Chamber of Shipping, NASH Maritime	<ul style="list-style-type: none"> <li>• Project update</li> <li>• Cumulative assessment approach and progress</li> <li>• Update on assessment work completed since MNEF 3 – HAZID workshop, PEIR deliverables Mona NRA and cumulative regional NRA</li> <li>• PEIR process and statutory consultation</li> <li>• Project revisions and commitments</li> <li>• Planned activities and next steps.</li> </ul>
MNEF 5 21 September 2023	The Applicant, RPS, Boskalis Westminster, Cairn Risk, Cobra – Floatation Energy, Harbour Energy, IoM Department of Infrastructure, Irish South & East Fish Producers Organisation, MCA, NASH Maritime, Orsted, Port of Mostyn, Royal Haskoning DHV, Saipem, Scottish Fisheries Federation, Scottish White Fish Producers Association, Seatruck Ferries, Spirit Energy, Stena Line, United Utilities	<ul style="list-style-type: none"> <li>• Project update</li> <li>• PEIR assessment and key findings</li> <li>• Project revisions</li> <li>• Update on assessment work undertaken since MNEF 4</li> <li>• DCO application process</li> <li>• Planned activities and next steps.</li> </ul>



## MONA OFFSHORE WIND PROJECT

### Issues agreed

1.3.1.13 Table 1.19 presents the items agreed with the MNEF.

**Table 1.19: Issues agreed with the MNEF.**

Area where agreement is sought	Progress of agreement
Baseline information and data used to inform assessment	Agreed
Maximum design parameters for the assessment(s)	Agreed
Impact assessment methodology (including interpretation of impact and levels of significance)	Agreed

### Issues under discussion

1.3.1.14 Potential impacts on commercial operators in adverse weather conditions is still under discussion with the MNEF members. This relates to commercial impacts associated with the potential for additional delays and cancellations to ferry services. In addition, co-existence of commercial fisheries still under discussion with the MNEF members (see section 1.4.1).

### Summary of progress

- 1.3.1.15 There were been six meetings of the MNEF during the pre-application process. The forum was engaged throughout the development of the Mona Offshore Wind Project environmental assessment. Forum meetings were held to discuss key elements of the project at each stage of the assessment process, EIA Scoping, PEIR and the development of the shipping and navigation assessment for the Environmental Statement.
- 1.3.1.16 The Applicant received agreement on a number of key areas including baseline data and surveys to inform the assessment work, parameters for assessment and the impact assessment methodology, and the maximum design parameters which informed the assessment.
- 1.3.1.17 Potential cumulative impacts were raised by the MNEF and identified early in the PEIR stage assessment. The Applicant has worked collaboratively with other round four offshore wind farm developers in the Irish Sea to address these potential cumulative impacts. This has included the development of the Cumulative Regional NRA (CRNRA) (Volume 6, Annex 7.2: Cumulative regional navigation risk assessment of the Environmental Statement (Document Reference F6.7.2)). The CRNRA has looked at the risks and hazards associated with the potential cumulative impacts of the round four Irish sea offshore wind projects – Mona Offshore Wind Project, Morgan Offshore Wind Project and Morecambe Offshore Wind Farm.
- 1.3.1.18 The objective of the CRNRA is to enable The Planning Inspectorate and stakeholders to engage with, and understand, the potential cumulative effects of the three round four Irish sea projects. Adopting a regional (collaborative) approach to assessment has enabled the individual projects to quantify and manage the cumulative effects in a coordinated, consistent and efficient manner.

## 1.3.2 Archaeology and Heritage Engagement Forum - offshore

### Aims of the AHEF - offshore

- 1.3.2.1 The aims of the offshore Archaeology and Heritage Engagement Forum (AHEF – offshore) were to identify and agree the information the Applicant will supply to the Planning Inspectorate as part of the DCO application for the Mona Offshore Wind Project.
- 1.3.2.2 The AHEF – offshore aimed to address and decide upon issues early on in pre-application process, streamlining these decisions whilst also focussing on the evidence requirements which aim to be proportionate to the potential impacts.
- 1.3.2.3 The overall aim of the forum was to ensure that impacts on offshore archaeology and heritage were identified, reduced, assessed and mitigated during the DCO and marine licence application process by:
- Ensuring that the Applicant provided sufficient and proportionate information in the assessment of the Mona Offshore Wind Project and the Morgan Generation Assets
  - Documenting agreement on information supplied by the Applicant to archaeology stakeholders
  - Outlining how baseline data and the methods and analyses used for the EIA satisfies the relevant legislation
  - Identification of issues early in the EIA process and approach to the resolution of those issues
  - Agreeing the results of the technical reports that support the EIA for the Mona Offshore Wind Project
  - Providing a direct link between the EIA and development of SoCGs.

### The AHEF - offshore process

- 1.3.2.4 The AHEF - offshore process involves a roadmap where agreed key tasks involving project milestones, such as EIA Scoping, the PEIR, Environmental Statement and consultation on draft SoCGs were the focus of stakeholder engagement whilst progressing through the EIA process. Key tasks within the AHEF – offshore process included:
- Agreeing on the existing baseline information
  - Agreeing on methods for impact assessment(s) (including where possible interpretation of impact and levels of significance)
  - Agreeing on methods employed to determine significance of effect
  - Providing feedback on key areas and progress in each topic area.
- 1.3.2.5 During the AHEF - offshore process the relevant information was passed to members before meetings at the key stages or when new information became available. The AHEF - offshore meetings then provided the opportunity for the stakeholders to discuss, provide feedback and advice as early as possible. A draft of the meeting minutes was shared with all members for comment prior to a final version being issued. Comments on the draft meeting minutes were required within two weeks of the draft

## MONA OFFSHORE WIND PROJECT

minutes being issued and the aim was to issue final minutes within two weeks thereafter.

### Roles and responsibilities of the AHEF – offshore

1.3.2.6 The AHEF - offshore was led by the Applicant. Table 1.20 provides a list of all participants involved in the AHEF - offshore.

**Table 1.20: Participants in the AHEF- offshore.**

Participants
The Applicant
Applicant's HRA and EIA Consultant (RPS)
MMO
Historic England (HE)
Cadw
Royal Commission on the Ancient and Historical Monuments of Wales (RCAHMW)

### **The Applicant**

1.3.2.7 The Applicant has the following roles and responsibilities:

- Act as chair and secretariat.
- Organise all AHEF - offshore meetings, including agreeing dates, times, attendees and agenda for meetings
- Disseminate any relevant information in good time ahead of each AHEF - offshore meeting
- Respond to queries on the Mona Offshore Wind Project
- Circulate meeting minutes after each AHEF - offshore meeting
- Collate, record and take account of any responses and comments provided, following meetings.

1.3.2.8 RPS has been instructed by the Applicant to lead on the EIA process for Mona Offshore Wind Project. RPS are therefore working on the Applicant's behalf as chair and secretariat.

### **Marine Management Organisation**

1.3.2.9 Provide comments on all offshore elements of the Mona Offshore Wind Project in English inshore and English offshore waters (within and outside of 12 nm from the English coast).

### **Historic England**

1.3.2.10 Provide comments on the onshore and offshore elements of the Mona Offshore Wind Project on English land or in English waters (within and outside of 12 nm from the English coast). Both the offshore and onshore elements of the Mona Offshore Wind Project are wholly within Welsh waters or within Wales, but the Mona Potential Array

## MONA OFFSHORE WIND PROJECT

Area (presented at the PEIR stage) was partially within English offshore waters before being refined to the version presented at application (shown on Figure 1.1).

### Cadw

- 1.3.2.11 Provide comments on the offshore elements of the Mona Offshore Wind Project in Welsh offshore waters seaward of MHWS.

### Royal Commission on the Ancient and Historical Monuments of Wales

- 1.3.2.12 Provide comments on the offshore elements of the Mona Offshore Wind Project in Welsh offshore waters seaward of MHWS.

### AHEF - offshore consultation

#### Overview

- 1.3.2.13 The remit and input required for the AHEF - offshore was as follows:
- Ensuring that the Applicant provides sufficient and proportionate information in the assessment of the Mona Offshore Wind Project
  - Documenting agreement on information supplied by the Applicant to archaeology stakeholders
  - Outlining how baseline data and the methods and analyses used for the EIA satisfies the relevant legislation and government policy for marine archaeology
  - Identification of issues early in the EIA process and approach to the resolution of those issues
  - Agree the results of the technical reports that support the EIA for the Mona Offshore Wind Project.
- 1.3.2.14 The outline programme of meetings is outlined within Table 1.21 and full meeting minutes and any additional information has been included within Appendix G.

**Table 1.21: AHEF - offshore consultation held to date and anticipated to take place during the pre-application phase.**

Date	Participants	Focus of consultation
30 November 2022	The Applicant, RPS, MMO, CADW – Historic Environment, Historic England	<ul style="list-style-type: none"> <li>• Presentation of the AHEF - offshore remit, ways of working and Road Map</li> <li>• Discussion of baseline approach to assessments.</li> </ul>
16 March 2023	The Applicant, RPS, MMO, CADW – Historic Environment, Historic England, RCAHMW	<ul style="list-style-type: none"> <li>• Presentation of conclusions of the marine archaeology technical report.</li> </ul>
13 July 2023	The Applicant, RPS, MMO, Historic England	<ul style="list-style-type: none"> <li>• Discussion of key issues raised by key stakeholders in the statutory consultation responses.</li> </ul>
13 October 2023	The Applicant, RPS, MMO, Historic England	<ul style="list-style-type: none"> <li>• Presentation of updated assessment and technical reports to address statutory consultation responses.</li> </ul>

## Issues agreed

1.3.2.15 The following issues are agreed:

- Key impacts addressed
- The methods employed for desktop data analysis
- The baseline characterisation formed from desktop data and site-specific survey
- The scope, approach and methodologies employed for geophysical survey and assessment of those data
- The methods for impact assessment(s).

## 1.3.3 Archaeology and Heritage Engagement Forum - onshore

### Aims of the AHEF - onshore

- 1.3.3.1 The aims of the onshore Archaeology and Heritage Engagement Forum were to identify and agree the information the Applicant is to supply to the Planning Inspectorate as part of the DCO application for the Mona Offshore Wind Project.
- 1.3.3.2 The AHEF – onshore provides greater certainty to all parties, on the amount and range of evidence the Applicant will collect and assess as part of the EIA process. Evidence requirements will be proportionate to the potential impacts. The forum also provides the mechanism to identify and address key issues early in pre-application process.
- 1.3.3.3 The overall aim of the forum is to ensure that there is a reduction in the risk of delay to the Mona Offshore Wind Project due to issues related to Archaeology and Heritage during the DCO application process.

### The AHEF - onshore process

- 1.3.3.4 The AHEF - onshore process used a road map to document the discussions with the AHEF - onshore on key tasks whilst progressing through the EIA process. Key tasks within the AHEF - onshore process include:
- Agreeing the survey information to be used in the PEIR
  - Agreeing the scope of the geophysical surveys
  - Agreeing the approach and scope of the trial trenching campaign
  - Agreeing worst case parameters for the assessment(s)
  - Agreeing methods for impact assessment(s) (including where possible interpretation of impact and levels of significance)
  - Providing feedback on key areas and progress in each task.
- 1.3.3.5 During the AHEF - onshore process the relevant information was passed to members before meetings at the key stages or when new information became available. The AHEF – onshore meetings then provided the opportunity for the stakeholders to discuss, provide feedback and advice as early as possible. AHEF - onshore meetings were recorded in meeting minutes and an agreement log compiled in order to summarise the feedback of members and record matters which are agreed or still under discussion. Both minutes and agreement log were circulated to members of the AHEF - onshore and agreed upon and then recorded within the roadmap document.

## MONA OFFSHORE WIND PROJECT

Additional information such as relevant email correspondence was also included within the roadmap for AHEF - onshore records.

### Roles and responsibilities of the AHEF – onshore

#### The Applicant

- 1.3.3.6 The Applicant has the following roles and responsibilities:
- Act as chair and secretariat
  - Organise all AHEF - onshore meetings, including agreeing dates, times, attendees and agenda for meetings
  - Disseminate any relevant information in good time ahead of each AHEF - onshore meeting
  - Respond to queries on the Mona Offshore Wind Project
  - Circulate meeting minutes after each AHEF - onshore meeting
  - Collate, record and take account of any responses and comments provided following meetings.
- 1.3.3.7 RPS has been instructed by the Applicant to lead on the EIA process for the Mona Offshore Wind Project and is working on the Applicant's behalf as chair.

#### Cadw

- 1.3.3.8 Provide comments on the onshore elements of the Mona Offshore Wind Project landward of Mean Low Water Springs (MLWS).

### Royal Commission on the Ancient and Historical Monuments of Wales

- 1.3.3.9 Provide comments on the onshore elements of the Mona Offshore Wind Project landward of MLWS.

#### Conwy and Powys Archaeological Trust

- 1.3.3.10 Provide comments on the onshore elements of the Mona Offshore Wind Project landward of MLWS.

### AHEF - onshore consultation

#### Overview

- 1.3.3.11 The remit and input required for the AHEF - onshore was as follows:
- Ensuring that the Applicant provides sufficient and proportionate information in the assessment of the Mona Offshore Wind Project
  - Documenting agreement on information supplied by the Applicant to archaeology stakeholders
  - Outlining how baseline data and the methods and analyses used for the EIA satisfies the relevant legislation and government policy for onshore archaeology
  - Identification of issues early in the EIA process and approach to the resolution of those issues



## MONA OFFSHORE WIND PROJECT

- Agree the results of the technical reports that support the EIA for the Mona Offshore Wind Project.

1.3.3.12 The outline programme of meetings is outlined within Table 1.22 and full meeting minutes and any additional information has been included within Appendix N.

**Table 1.22: AHEF – onshore meetings held to date and anticipated to take place.**

Date	Participants	Focus of meeting
30 November 2022	The Applicant, Cadw, RCHAMW, Conwy and Powys Archaeological Trust (CPAT)	<ul style="list-style-type: none"> <li>• AHEF - onshore remit and the ways of working and Road map</li> <li>• Discussion of desk top sources in baseline characterisation</li> <li>• Discussion of surveys undertaken and ongoing.</li> </ul>
9 May 2023	The Applicant, , CPAT	<ul style="list-style-type: none"> <li>• Discussion of findings from DBA</li> <li>• Discussion of finding from geographical survey</li> <li>• Discussion of trial trenching strategy</li> <li>• Discussion of strategy for heritage intertidal survey.</li> </ul>
12 July 2023	The Applicant, CPAT	<ul style="list-style-type: none"> <li>• Discussion of approach to Written Scheme of Investigation for construction</li> <li>• Discussion of impacts and mitigation identified in PEIR</li> <li>• Discussion of locations for trial trenching</li> <li>• Discussion of key issues from stakeholders raised in PEIR</li> </ul>
14 November 2023	The Applicant, , CPAT	<ul style="list-style-type: none"> <li>• Discussion of early findings from trial trenching</li> <li>• Discussion of how comments from PEIR to be addressed in the Environmental Statement</li> <li>• Discussion of information to be included in the DCO application.</li> </ul>

### Issues agreed

1.3.3.13 The following issues are agreed:

- Key impacts addressed
- The data sources used in the desk-based review
- The agreement on the trial trenching strategy and WSI
- The proposed locations for the trial trenching survey
- Interim survey results from the trial trenching campaign to be included in the DCO application.

## 1.4 Other technical consultation

### 1.4.1 Commercial fisheries consultation

#### Overview

1.4.1.1 The approach to commercial fisheries consultation was to identify commercial fishers that operate within the Irish Sea where there was the potential for their activities to be



## MONA OFFSHORE WIND PROJECT

impacted by the Mona Offshore Wind Project. Consultation focussed on improving understanding of the different fishing methods and practices in the vicinity of the Mona Offshore Wind Project, discussing the potential impacts and possible measures to address these. A number of meetings have taken place between the Applicant and fisheries stakeholders, as detailed in Table 1.23. Full meeting minutes and any additional information has been included within Appendix H.

**Table 1.23: Commercial fisheries consultation held to date and anticipated to take place during the pre-application phase.**

Date	Participants	Focus of consultation
24 June 2021	The Applicant, SFF; SWFPA; and West Coast Sea Products Ltd (WCSP), Fishing Industry Representative (FIR), MarineSpace	<ul style="list-style-type: none"> <li>• Mona Array Area layout</li> <li>• Co-existence during the operations and maintenance phase.</li> </ul>
29 June 2021	The Applicant, Individual fishers from B&M Fishing LLP Fleetwood and Maryport; IS&EFPO; Manx Fish Producers Organisation (MFPO); NFFO; Welsh Fishermen's Association (WFA); Western Fish Producers Organisation (WFPO); and Whitehaven Fishermen's Cooperative (WFC)	<ul style="list-style-type: none"> <li>• Mona Array Area layout</li> <li>• Co-existence during the operations and maintenance phase</li> <li>• Cumulative impacts with other activities and developments in the region</li> <li>• Potential impacts on fish stocks.</li> </ul>
01 July 2021	The Applicant, ANIFPO, NIFPO, Rederscentrale, FIR, MarineSpace	<ul style="list-style-type: none"> <li>• Mona Array Area layout</li> <li>• Co-existence during the operations and maintenance phase</li> <li>• Cumulative impacts with other activities and developments in the region</li> <li>• Potential impacts on fish stocks.</li> </ul>
14 February 2022	The Applicant, ANIFPO, WFPO, Rederscentrale, FIR, MarineSpace	<ul style="list-style-type: none"> <li>• Project update</li> <li>• Outlining 2022 survey programme.</li> </ul>
14 February 2022	The Applicant, SSF, SWFPA, WCSP, FIR, MarineSpace	<ul style="list-style-type: none"> <li>• Project updates</li> <li>• Inter-array cable layout and burial depths</li> <li>• Cumulative impacts with other activities and developments in the region</li> <li>• Potential impacts on fish stocks</li> <li>• Vessel data to inform the environmental assessment.</li> </ul>
15 February 2022	The Applicant, NFFO, WFC, IoM, FIR, MarineSpace	<ul style="list-style-type: none"> <li>• Introduction to project and engagement with fisheries.</li> </ul>
29 March 2022	The Applicant, Welsh Government, FIR, MarineSpace	<ul style="list-style-type: none"> <li>• Vessel data to inform the environmental assessment.</li> </ul>
May/June 2022	The Applicant, Inshore commercial fisheries groups and individuals	<ul style="list-style-type: none"> <li>• Identify vessels affected by cable route surveys</li> </ul>

## MONA OFFSHORE WIND PROJECT

Date	Participants	Focus of consultation
24 November 2022	B&M Fishing LLP	<ul style="list-style-type: none"> <li>Identify vessels affected by cable route surveys</li> <li>Project update</li> <li>Mona array layout and co-existence during the operations and maintenance phase</li> <li>Cumulative impacts with other activities and developments in the region</li> <li>Potential impacts on fish stocks</li> </ul>
24 November 2022	MFPO; local commercial fishermen, IoM Government	<ul style="list-style-type: none"> <li>Identify vessels affected by cable route surveys</li> <li>Project update</li> <li>Mona array layout and co-existence during the operations and maintenance phase</li> <li>Cumulative impacts with other activities and developments in the region</li> <li>Potential impacts on fish stocks</li> </ul>
25 November 2022	Conwy commercial fishermen	<ul style="list-style-type: none"> <li>Identify vessels affected by cable route surveys</li> <li>Project update</li> <li>Mona array layout and co-existence during the operations and maintenance phase</li> <li>Cumulative impacts with other activities and developments in the region</li> <li>Potential impacts on fish stocks</li> </ul>
01 December 2022	Redercentrale (Belgian producer organisation)	<ul style="list-style-type: none"> <li>Identify vessels affected by cable route surveys</li> <li>Project update</li> <li>Mona array layout and co-existence during the operations and maintenance phase</li> <li>Cumulative impacts with other activities and developments in the region</li> <li>Potential impacts on fish stocks</li> </ul>
02 December 2022	Irish Fish Producers Organisation (IFPO) and IS&EFPO	<ul style="list-style-type: none"> <li>Identify vessels affected by cable route surveys</li> <li>Project update</li> <li>Mona array layout and co-existence during the operations and maintenance phase</li> <li>Cumulative impacts with other activities and developments in the region</li> <li>Potential impacts on fish stocks</li> </ul>
15 December 2022	WCSP, SFF, SWFPA	<ul style="list-style-type: none"> <li>Identify vessels affected by cable route surveys</li> <li>Project update</li> <li>Mona array layout and co-existence during the operations and maintenance phase</li> <li>Cumulative impacts with other activities and developments in the region</li> <li>Potential impacts on fish stocks</li> </ul>

## MONA OFFSHORE WIND PROJECT

Date	Participants	Focus of consultation
September - October 2023	The Applicant, MFPO, IoM, Marinspace, RPS, SWFP, WCSP, Seafish,	<ul style="list-style-type: none"> <li>• Project update</li> <li>• Presentation on key issues raised during PEIR consultation</li> <li>• Project commitments to address key issues</li> <li>• Outline Fisheries liaison and coexistence plan</li> </ul>

### Issues agreed

1.4.1.2 The following issues have been agreed with commercial fisheries stakeholders:

- Baseline data used within the assessment and data limitations
- Changes to the project design envelope including, reduction in extent of Mona Array Area, reduction in the maximum number of turbines from 107 to 96, removal of monopile foundations as an option and reduction in the maximum length of array cables reducing cable protection allowance
- Co-existence options including, positions of turbines, orientation of inter-array cabling, minimum spacing between turbines, scallop mitigation zones within the Mona Array Area. A Fisheries Liaison and Coexistence Plan (FLCP) will be developed through consultation with commercial fisheries stakeholders. An outline of this plan has been submitted as part of the Application (Document Reference J11).

### Issues under discussion

1.4.1.3 The following issues are under discussion with commercial fisheries stakeholders:

- Co-existence approach which will be agreed through the development and implementation of the FLCP including; displacement of fishing activity during construction, cable installation methods and cable protection and coexistence of fisheries activity during the operations and maintenance phase of the project.

### Summary of progress

1.4.1.4 The project has made a number of commitments to address coexistence of commercial fishing activity within the Mona Array Area. These commitments have been presented to fishing stakeholders and relevant measures will be secured through the FLCP (Document Reference J11), for which an outline plan has been submitted as part of the Development Consent application. The outline FLCP has been shared with commercial fishing stakeholders for comment and the final plan will be developed with ongoing engagement between the Applicant and commercial fisheries stakeholders.

## **1.4.2 Shipping and navigation consultation**

### Overview

1.4.2.1 In addition to the MNEF, additional stakeholder engagement activities have been carried out to facilitate discussions and agreement between the Applicant and the key stakeholders in relation to the information that will be prepared to support the shipping and navigation assessment of the Environmental Statement. Consultation for different

## MONA OFFSHORE WIND PROJECT

aspects of the shipping and navigation EIA has been undertaken with individual stakeholders or small groups where appropriate rather than through the MNEF.

1.4.2.2 A number of meetings have taken place between the Applicant and various stakeholders, as detailed in Table 1.24 and full meeting minutes and any additional information has been included within Appendix I.

**Table 1.24: Shipping and navigation consultation held to date and anticipated to take place during the pre-application phase.**

Date	Participants	Focus of consultation
14 October 2021	The Applicant, RPS, MCA	<ul style="list-style-type: none"> <li>• Introduction to the Mona Offshore Wind Project</li> <li>• Mona Offshore Wind Project design</li> <li>• Shipping and navigation data to be used for the EIA.</li> </ul>
01 February 2022	The Applicant, MCA, Trinity House	<ul style="list-style-type: none"> <li>• Project update</li> <li>• Confirmation of interpretation and application of relevant policies (NPS EN-3) and guidance</li> <li>• Summarised key impacts and early assessment findings</li> <li>• Proposed approach to assessment and resolution of impacts.</li> </ul>
09 February 2022	The Applicant, BEIS	<ul style="list-style-type: none"> <li>• Introduction to the project</li> <li>• Key potential shipping and navigation impacts and the application's approach to these.</li> </ul>
14 February 2022	The Applicant, MCA, Chamber of Shipping, Seatruck Ferries, Stena Line, IoMSPC	<ul style="list-style-type: none"> <li>• Project update</li> <li>• Key shipping and navigation impacts</li> <li>• Review of proposed approach to assessment.</li> </ul>
04 April 2022	The Applicant, IoMSPC,	<ul style="list-style-type: none"> <li>• To provide the evidential basis behind the current operations and constraints of ferry operations in order to inform the Navigation Risk Assessment (NRA) and EIA.</li> </ul>
05 April 2022	The Applicant, Seatruck	<ul style="list-style-type: none"> <li>• To provide the evidential basis behind the current operations and constraints of ferry operations in order to inform the NRA and EIA.</li> </ul>
14 April 2022	The Applicant, Stena line	<ul style="list-style-type: none"> <li>• To provide the evidential basis behind the current operations and constraints of ferry operations in order to inform the NRA and EIA.</li> </ul>
21 April 2022	The Applicant, RYA	<ul style="list-style-type: none"> <li>• Introduction to the project, membership of the MNEF, hazard workshop attendance and information on summer vessel traffic surveys.</li> </ul>
01 June 2022	The Applicant, IoMSPC	<ul style="list-style-type: none"> <li>• Letter to provide an update on the project and to request additional attendance at the navigation simulation.</li> </ul>
01 June 2022	The Applicant, P&O	<ul style="list-style-type: none"> <li>• Letter to provide an update on the project and to request additional attendance at the navigation simulation.</li> </ul>
01 June 2022	The Applicant, Seatruck	<ul style="list-style-type: none"> <li>• Letter to provide an update on the project and to request additional attendance at the navigation simulation.</li> </ul>
01 June 2022	The Applicant, Stena Line	<ul style="list-style-type: none"> <li>• Letter to provide an update on the project and to request additional attendance at the navigation simulation.</li> </ul>
30 June 2022	The Applicant, Seatruck, HR Wallingford	<ul style="list-style-type: none"> <li>• Bridge navigation simulation preparations</li> <li>• Meeting for familiarisation of navigation simulation procedure for Seatruck by HR Wallingford.</li> </ul>

## MONA OFFSHORE WIND PROJECT

Date	Participants	Focus of consultation
20 – 21 July 2022	The Applicant, IoMSPC, HR Wallingford	<ul style="list-style-type: none"> <li>Bridge navigation simulation preparations</li> <li>Meeting for familiarisation of navigation simulation procedure for IoMSPC by HR Wallingford.</li> </ul>
11 – 12 August 2022	The Applicant, Stena Line, HR Wallingford	<ul style="list-style-type: none"> <li>Bridge navigation simulation preparations</li> <li>Meeting for familiarisation of navigation simulation procedure for IoMSPC by HR Wallingford.</li> </ul>
17 – 19 August 2022	The Applicant, IoMSPC, HR Wallingford	<ul style="list-style-type: none"> <li>PEIR stage bridge navigation simulations.</li> </ul>
23 – 25 August 2022	The Applicant, Stena Line, HR Wallingford	<ul style="list-style-type: none"> <li>PEIR stage bridge navigation simulations.</li> </ul>
8 – 9 September 2022	The Applicant, Seatruck, HR Wallingford	<ul style="list-style-type: none"> <li>PEIR stage bridge navigation simulations.</li> </ul>
3 October 2022	The Applicant, S&N Stakeholders for Hazard workshop	<ul style="list-style-type: none"> <li>Online webinar to run through the approach and process for the Hazard workshop with all S&amp;N stakeholder attendees.</li> </ul>
10 – 11 October 2022	The Applicant, S&N Stakeholders for Hazard workshop	<ul style="list-style-type: none"> <li>Mona Hazard Workshop.</li> </ul>
19 October 2022	The Applicant, Isle of Man Government	<ul style="list-style-type: none"> <li>Consultation meeting.</li> </ul>
20 October 2022	The Applicant, Orsted	<ul style="list-style-type: none"> <li>Consultation meeting.</li> </ul>
23 – 25 May 2023	The Applicant, Stena Line	<ul style="list-style-type: none"> <li>Environmental Statement stage bridge navigation simulations.</li> </ul>
22 – 23 June 2023	The Applicant, Seatruck, HR Wallingford	<ul style="list-style-type: none"> <li>Environmental Statement stage bridge navigation simulations</li> </ul>
05 July 2023	MCGA	<ul style="list-style-type: none"> <li>Email on the Applicant's intention to undertake further vessel traffic surveys to address consultation responses</li> <li>Summary of existing vessel traffic data help by the Applicant.</li> </ul>
13 – 14 September 2023	The Applicant, IoMSPC, HR Wallingford	<ul style="list-style-type: none"> <li>Environmental Statement stage bridge navigation simulations</li> </ul>

### Issues under discussion

- 1.4.2.3 The following issues are under discussion with shipping and navigation stakeholders:
- Potential effects of the Mona Offshore Wind Project on commercial vessel routing
  - Potential effects of the Mona Offshore Wind Project on safety of navigation

## MONA OFFSHORE WIND PROJECT

- Potential cumulative effects with the Mona Offshore Wind Project on commercial vessel routing
- Potential cumulative effects with Mona Offshore Wind Project on safety of navigation.

### Summary of progress

- 1.4.2.4 Navigation simulations were undertaken at the PEIR stage with each commercial operator potentially impacted by the Mona Offshore Wind Project, Stena, SeaTruck and IoMSPC. This work looked at potential routing of vessels under various weather/sea state scenarios with the presence of the Mona Array Area and cumulatively with other Irish Sea round four offshore wind projects (Morgan Offshore Wind Project and Morecambe Offshore Wind Farm) as well as existing offshore wind farms in the Irish sea. The Agreement for Lease boundary for Ørsted's Moor Vannin offshore wind project in Isle of Man waters was also included.
- 1.4.2.5 The results from the navigation simulations fed into a hazard scoring workshop which was held with shipping and navigation stakeholders in October 2022 to review the navigational hazards of the Mona Offshore Wind Project. It was attended by representatives from ferry operators, regulators, commercial bodies, oil and gas, ports, fishing community and recreational users. The hazard workshop looked at the safety of navigation under certain route scenarios with the presence of the Mona Array Area and cumulatively with other proposed round four offshore wind farms and existing offshore wind farms in the Irish sea.
- 1.4.2.6 The results from the hazard workshop fed into the NRA and CRNRA which were prepared for the PEIR and formed the technical basis of the shipping and navigation PEIR assessment chapter. At PEIR stage a number of unacceptable risks were identified both alone and cumulatively (see Volume 2, Chapter 7: Shipping and navigation of the PEIR).
- 1.4.2.7 Following PEIR consultation the Applicant made a number of commitments to address the potential impacts identified on shipping and navigation receptors. These included:
- Mona Array Area boundary changes to increase searoom between the Mona Array Area, Liverpool traffic separation scheme and existing operational wind farms and proposed round 4 offshore wind farms in the Irish Sea
  - Boundary changes to the Morgan Array Area to reduce cumulative impacts with the Mona Offshore Wind Project
  - Array layout commitments including minimum wind turbine spacing and two lines of orientation
  - Commitment to further engagement including a repeat of full bridge navigation simulations to test the changes being made by the Applicant.
- 1.4.2.8 For the preparation of the Environmental Statement further bridge simulations were held with commercial operators between June and September 2023. These simulations tested boundary amendments to the Mona Array Area and potential impacts on vessel routing alone and cumulatively with other proposed offshore wind farms in the Irish sea. The re-run bridge simulations were held with the ferry operators Stena Line, SeaTruck and IoMSPC.
- 1.4.2.9 The results from these navigation simulations fed into a repeat hazard scoring workshop which was held with shipping and navigation stakeholders in September 2023 to review the navigational hazards of the Mona Offshore Wind Project following



## MONA OFFSHORE WIND PROJECT

revisions to the Mona Array Area. It was attended by representatives from ferry operators, regulators, commercial bodies, oil and gas, ports, fishing community and recreational users.

- 1.4.2.10 Following the repeated navigation simulations and hazard workshop there is some outstanding discussion on the scope of the cumulative assessment and potential cumulative effects on commercial operators.

### 1.4.3 Aviation and radar consultation

#### Overview

- 1.4.3.1 The approach to aviation consultation was to identify impacts on specific receptors (airports, aerodromes and radar systems) and work with key stakeholders to identify appropriate mitigation. A number of meetings have taken place between the Applicant and various stakeholders, as detailed in Table 1.25. Full meeting minutes and any additional information has been included within Appendix J.

**Table 1.25: Aviation and radar consultation held to date and anticipated to take place during the pre-application phase.**

Date	Participants	Focus of consultation
01 January 2022	NATS	<ul style="list-style-type: none"> <li>NATS informed that there will be a predicted outcome to certain of their Primary Surveillance Radar (PSR) systems from operational wind turbines and the creation of unwanted radar returns.</li> </ul>
25 April 2022	Manchester Airports Group	<ul style="list-style-type: none"> <li>Manchester Airports Group requested the completion of an Instrument Flight Procedures (IFP) assessment, which has been concluded and is included as Appendix B of Volume 8, Annex 1.1: Aviation and radar technical report of the Environmental Statement (Document Reference F8.1.1).</li> </ul>
04 May 2022	Noordzee Helikopters Vlaanderen (NHV)	<ul style="list-style-type: none"> <li>NHV provide helicopter support to both Spirit Energy (including Harbour Energy) and ENI who stated to NHV, that impacts of varying degrees will be experienced by helicopter operations completed in poor weather conditions to their offshore hydrocarbon platforms due to the creation of obstacles.</li> </ul>
12 July 2022	The Applicant, Liverpool Airport	<ul style="list-style-type: none"> <li>Flight trial requirements</li> <li>Discussion on radar mitigation scheme.</li> </ul>
20 January 2023	The Applicant, Isle of Man Airport	<ul style="list-style-type: none"> <li>Discussion of stakeholder engagement for PEIR, post-PEIR and SoCG.</li> </ul>
28 March 2023	The Applicant, Barrow Walney Airfield and Warton Airfield	<ul style="list-style-type: none"> <li>Discussion of potential impacts to stakeholders.</li> </ul>
31 March 2023	The Applicant, Liverpool Airport	<ul style="list-style-type: none"> <li>Discussion of mitigation possibilities which are to be agreed through SoCG.</li> </ul>
1 August 2023	The Applicant, Isle of Man Airport	<ul style="list-style-type: none"> <li>Discussion of potential impact to stakeholder and agreement of SoCG for mitigation.</li> </ul>
10 August 2023	The Applicant, NATS	<ul style="list-style-type: none"> <li>Discussion of potential impacts to stakeholder and appropriate regional mitigation through SoCG.</li> </ul>
25 August 2023	The Applicant, Blackpool Airport	<ul style="list-style-type: none"> <li>Discussion of potential impact to stakeholder and future engagement for route to mitigation.</li> </ul>

## MONA OFFSHORE WIND PROJECT

Date	Participants	Focus of consultation
05 September 2023	The Applicant, Isle of Man Airport	<ul style="list-style-type: none"> <li>Discussion of potential impact to stakeholder and appropriate mitigation for the PSR at the Isle of Man Airport.</li> </ul>
26 September 2023	The Applicant, Barrow and Walney Aerodromes	<ul style="list-style-type: none"> <li>Discussion of potential impacts to stakeholder and mitigation approach (increase in Minimum Safety Altitude (MSA) in the southwest sector from 1,900 ft to 2,200 ft).</li> </ul>

### Issues under discussion

- 1.4.3.2 The following items are under discussion with all aviation and radar stakeholders.
- Detailed routes to PSR mitigation
  - Detailed routes to mitigation on flight safety procedures
  - Update to the assessments as a result of project design changes between PEIR and the Environmental Statement.

### Summary of progress

- 1.4.3.3 While the baseline characterisation has been satisfactorily agreed on by the Applicant and key stakeholders, along with approaches to mitigation for potential impacts upon these stakeholders, the exact commercial agreements required still have to be drafted and settled where required and work on these is ongoing.

## 1.4.4 Other sea users consultation

### Overview

- 1.4.4.1 The approach to other sea users consultation was to identify receptors within the east Irish Sea. A questionnaire was sent to the major oil and gas operators operating in the area:
- Eni UK Ltd.
  - Harbour Energy Plc
  - Spirit Energy Ltd.
- 1.4.4.2 The description of the assets and operations of these key stakeholders informed the baseline of Volume 2, Chapter 10: Other sea users of the Environmental Statement (Document Reference F2.10), and therefore the impact assessment presented in the same chapter.

**Table 1.26: Other sea users consultation held to date and anticipated to take place during the pre-application phase.**

Date	Participants	Focus of consultation
20 April 2022	Spirit Energy Ltd.	<ul style="list-style-type: none"> <li>Information on assets in the east Irish Sea and future activity.</li> </ul>
24 November 2022	Harbour Energy Plc	<ul style="list-style-type: none"> <li>Information on assets in the east Irish Sea and future activity.</li> </ul>

## MONA OFFSHORE WIND PROJECT

Date	Participants	Focus of consultation
08 December 2022	Eni UK Ltd.	<ul style="list-style-type: none"> <li>Information on assets in the east Irish Sea and future activity.</li> </ul>

1.4.4.3 Engagement is ongoing regarding crossing and proximity agreements.

### 1.4.5 Seascape, landscape and visual resources consultation

#### Overview

1.4.5.1 A summary of the key issues raised during consultation activities undertaken to date specific to seascape, landscape and visual resources is presented in Table 1.27. Consultation on representative viewpoints, substation design strategy and the ecology and landscape design involved the following stakeholders:

- Natural England
- NRW
- Eryri National Park
- Anglesey County Council
- Clwydian Range and Dee Valley Area of Outstanding Natural Beauty (AONB)
- Conwy County Borough Council
- Denbighshire County Council
- Design Council for Wales
- Gwynedd Council
- Isle of Man Government.
- Lake District National Park
- The Woodland Trust.

1.4.5.2 Further detail on consultation is presented in Volume 6, Annex 8.3: Visual baseline technical report – offshore development of the Environmental Statement and Volume 7, Annex 6.3: Visual baseline technical report – onshore development of the Environmental Statement (Document References F6.8.3 and F7.6.3).

**Table 1.27: Seascape, landscape and visual consultation held to date and anticipated to take place during the pre-application phase.**

Date	Participants	Focus of consultation
22 February 2022 (email consultation)	The Applicant, Eryri National Park Authority, Isle of Anglesey County Council, NRW, Conwy County Borough Council, Denbighshire County Council	<ul style="list-style-type: none"> <li>Share photographs from candidate viewpoints and agree the viewpoints to be used in the assessment.</li> </ul>

## MONA OFFSHORE WIND PROJECT

Date	Participants	Focus of consultation
01 March 2022 (email consultation)	NRW Advisory	<ul style="list-style-type: none"> <li>NRW Advisory (A)'s comments related to the proposed viewpoints within National Parks and National Landscapes (NL). <ul style="list-style-type: none"> <li>Ynys Môn NL: the number and geographical distribution along the northern and eastern coastal edges of the NL looked appropriate. NRW (A), however, deferred comment on specific locations to the Isle of Anglesey's Landscape Officer.</li> <li>Snowdonia National Park- VP5 Snowdon – NRW (A) advised deletion of this viewpoint. The Mona Array Area is at some 60km from the summit. There is a considerable area of upland landmass in views looking northwards to the coastline. The coastal edge of Ynys Môn is sometimes just evident from the summit of Snowdon, otherwise there are no obvious views of the North Wales seascape due to the viewing distance</li> <li>VP6 Carnedd Llewelyn – Agreed</li> <li>Additional viewpoints: Foel Lus SH732761 The North Wales Path above Abergwyngregyn SH646711, Clwydian Range and Dee Valley AONB</li> <li>VP 10 Graig Fawr – Agreed.</li> </ul> </li> <li>VP 11 Moel Y Parc summit – NRW (A) advise the deletion of this viewpoint. The North Wales coastline is inconspicuous from here. NRW (A) recommend replacement with a view from Offa's Dyke footpath above Meliden where the path contours Prestatyn Hillside in the area of SJ066808.</li> </ul>
01 March 2022 (email consultation)	Isle of Anglesey County Council	<ul style="list-style-type: none"> <li>Include a similar number of lower Above Ordnance Datum (AOD) viewpoints in assessment compared to Awel y Môr. It is assumed that the likely proposed height of the turbines means that they would also be visible at lower AODs and that there is scope for significant effects at more points along the coast. Some of these should also be considered as cumulative viewpoints.</li> <li>There will be a need for some micro-siting at VP4 (Bwrdd Arthur trig point) as there are more open views from some of the open access land.</li> <li>Onshore - viewpoints appear suitably distributed. Include an additional viewpoint from the A5025 east between Bettws and Neaudd for completeness.</li> </ul>
07 March 2022 (email consultation)	Eryri National Park Authority	<ul style="list-style-type: none"> <li>Suggested viewpoints: <ul style="list-style-type: none"> <li>Carnedd Llywelyn</li> <li>Tal y Fan</li> <li>Mynydd Conwy (Conwy Mountain)</li> <li>Foel Lus and the path by Abergwyngregyn</li> </ul> </li> <li>exclusion of Yr Wyddfa as a viewpoint</li> </ul>
07 March 2022 (email consultation)	Natural England	<ul style="list-style-type: none"> <li>Natural England confirmed that they would not give advice at this early stage of development for landscape and seascape impacts, but instead would provide comments at the PEIR stage, on the visuals.</li> <li>Recommended that the developer look at other offshore windfarm applications to look at their approaches.</li> </ul>

## MONA OFFSHORE WIND PROJECT

Date	Participants	Focus of consultation
12 September 2022 (email consultation)	NRW Advisory	<ul style="list-style-type: none"> <li>No concerns relating to SLVIA and were of the opinion that the likelihood of significant visual effects on North Wales's National Parks and Areas of Outstanding Natural Beauty, singularly or in combination is low. However, should the scale of the project / turbine parameters increase NRW would be keen to be included in further discussions.</li> </ul>
28 September 2022 (virtual meeting)	The Applicant, Denbighshire County Council, Isle of Anglesey County Council, Isle of Man Government, WG, Conwy County Borough Council, Gwyneth Council, NRW, Eryri National Park Authority.	<ul style="list-style-type: none"> <li>Seascape, landscape and visual resources workshop</li> <li>Extent of the buffer to assess seascape impacts</li> <li>Principal guidance/methodology to be used for assessment</li> <li>Characterisation of the baseline environment</li> <li>Identification of the representative viewpoint locations.</li> </ul>
09 November 2022 (email consultation)	Natural England	<ul style="list-style-type: none"> <li>Advised that the visual buffer be extended from 50 km to 60 km due to the height of the turbines</li> <li>Natural England did not have further comment to provide regarding SLVIA and did not consider impacts would be within the setting of any National Park or AONB.</li> </ul>
17 and 31 August 2023 (virtual meeting and report)	The Applicant, Design Commission for Wales (DCFW) Denbighshire County Council	<ul style="list-style-type: none"> <li>Issue of the Design Review Report by the Design Commission for Wales.</li> <li>Substation design strategy</li> </ul>
4 October 2023 (virtual meeting)	Onshore Ecology and Landscape EWG 05 NRW, Conwy County Borough Council, Denbighshire County Council and The Woodland Trust	<ul style="list-style-type: none"> <li>Consultation on the substation design strategy</li> <li>Landscape and ecology strategy</li> <li>Factors that influenced design of the landscape and ecology strategy including existing vegetation, hedgerows and trees</li> <li>Draft visualisations</li> </ul>
8 December 2023 (virtual meeting)	Onshore Ecology and Landscape EWG 06 NRW and Conwy County Borough Council	<ul style="list-style-type: none"> <li>Outline LEMP which confirmed that it will focus on retention and/ or enhancements of key boundary features at the Onshore Substation and additional planting</li> </ul>

### Issues agreed

- 1.4.5.3 The following issues have been agreed with key stakeholders for seascape and landscape:
- The extent of the seascape, landscape and visual resources study area is appropriate
  - The maximum design scenario of an edge weighted layout.
  - Assessment methodology
  - Viewpoints for inclusion
  - Impacts of Mona Offshore Wind Project wind turbines on public and private views
  - Impacts of Mona Offshore Wind Project wind turbines on Special Qualities of nationally designated landscapes.

## MONA OFFSHORE WIND PROJECT

- Substation design, including illustrative ecology and landscape strategy
- Landscape and ecology management plan
- Cumulative impacts.

### Issues under discussion

1.4.5.4 No issues are currently under discussion.

### Summary of progress

1.4.5.5 Stakeholders are engaged with the seascape, landscape and visual resources. Matters arising from consultation have been discussed and agreed where applicable.

## **1.4.6 Geology, hydrogeology and ground conditions consultation**

### Overview

1.4.6.1 The consultation for geology, hydrogeology and ground conditions has predominantly comprised data requests from Conwy CBC and Denbighshire CC regarding private groundwater supplies, contaminated land register entries and the historic Llanndulas Beach landfill site. No meetings have been held with these stakeholders or NRW. Further detail is presented in Volume 7, Annex 1.2: Groundwater sources of supply – hydrogeological risk assessment and Annex 1.1: Aquifers, Groundwater Abstractions and Ground Conditions of the Environmental Statement (Document References F7.1.2 and F7.1.1).

### Issues agreed

1.4.6.2 The geology, hydrogeology and ground conditions study area has been agreed via the consultation process.

### Issues under discussion

1.4.6.3 No issues are currently under discussion.

### Summary of progress

1.4.6.4 The baseline characterisation has been agreed using the information provided and the assessment has been undertaken on this basis.

## **1.4.7 Hydrology and flood risk consultation**

### Overview

1.4.7.1 A summary of key issues raised during consultation undertaken to date specific to hydrology and flood risk is presented in Table 1.28. The consultation for hydrology and flood risk also included requests for flooding modelling data from NRW.

## MONA OFFSHORE WIND PROJECT

**Table 1.28: Hydrology and flood risk consultation held to date and anticipated to take place throughout the pre-application phase.**

Date	Participants	Focus of consultation
7 June 2023	The Applicant, NRW, Conwy County Borough Council Denbighshire County Council	<ul style="list-style-type: none"> <li>• Discussion of Hydrology and flood risk EWG remit and way of working</li> <li>• Discussion of desk top sources for baseline characterisation</li> <li>• Discussion of Hydrology and flood risk constraints</li> <li>• Discussion of coastal flood defences</li> <li>• Discussion of approach of drainage strategy for Onshore substation.</li> </ul>

### Issues agreed

1.4.7.2 The following issues have been agreed with hydrology and flood risk stakeholders:

- The extent of the hydrology and flood risk study area is appropriate
- Baseline data used within the assessment and data limitations
- Main areas of flood risk in relation to the Mona Offshore Wind Project
- The approach for the outline drainage strategy for the Onshore Substation

### Issues under discussion

1.4.7.3 The following points are still under discussion with hydrology and flood risk stakeholders:

- Method statements for the techniques used to cross ordinary watercourses
- The inclusion of the flood risk activity permit provisions within the DCO
- The results of the outline drainage strategy for the Onshore Substation

### Summary of progress

1.4.7.4 The baseline characterisation has been agreed and the assessment has been undertaken on this basis. The outline drainage strategy (Outline Operational Drainage Management Strategy (Document Reference J28) has been prepared in accordance with relevant guidance however, this has not yet been shared with Denbighshire County Council.

## **1.4.8 Land use and recreation consultation**

### Overview

1.4.8.1 A summary of key issues raised during consultation undertaken to date specific to land use and recreation is presented in Table 1.29. Further information on Public Rights of Way is provided in the Outline Public Rights of Way Management Strategy (Document Reference J27).



## MONA OFFSHORE WIND PROJECT

**Table 1.29: Land use and recreation consultation held to date and anticipated to take place throughout the pre-application phase.**

Date	Participants	Focus of consultation
03 October 2023	The Applicant, Denbighshire CBC	<ul style="list-style-type: none"> <li>Discuss the proposed management of affected Public Rights of Way (PRoW) within Denbighshire.</li> </ul>
13 December 2023	The Applicant, Denbighshire CBC, Conwy CBC	<ul style="list-style-type: none"> <li>Email including the draft of the Outline PRoW Management Strategy sent to Denbighshire BC and Conwy CBC</li> </ul>

### Issues agreed

- 1.4.8.2 The following issues have been agreed with the stakeholders for land use and recreation:
- The extent of the land use and recreation study area is appropriate
  - Baseline data used within the assessment and data limitations
  - The proposed measures for managing PRoWs within the local authority area of Denbighshire CC where they interact with construction works.

### Issues under discussion

- 1.4.8.3 Conwy CBC were unable to attend the meeting held on 03 October 2023 to discuss the proposed management of affected PRoW. Therefore, agreement has not yet been reached on the proposed management of PRoW within the local authority area of Conwy CBC. A draft version of the Outline PRoW Management Strategy was subsequently issued to both Conwy CBC and Denbighshire CC on the 13 December 2023 via email for review. However, no comments were received from Conwy CBC or Denbighshire CC in response to the draft version of the Outline PRoW Management Strategy.

### Summary of progress

- 1.4.8.4 The baseline characterisation has been agreed and the assessment has been undertaken on this basis.

## **1.4.9 Traffic and transport consultation**

### Overview

- 1.4.9.1 A summary of key issues raised during consultation undertaken to date specific to traffic and transport is presented in Table 1.30. The consultation also included requests for traffic data from Conwy CBC and Denbighshire Co A summary of key issues raised during consultation undertaken to date specific to traffic and transport is presented in Table 1.30. The consultation also included requests for traffic data from Conwy CBC and Denbighshire County Council.

## MONA OFFSHORE WIND PROJECT

**Table 1.30: Traffic and transport consultation held to date and anticipated to take place throughout the pre-application phase.**

Date	Participants	Focus of consultation
17 May 2023	The Applicant, Conwy CBC Denbighshire CC, NMWTRA, WG	<ul style="list-style-type: none"> <li>• Discussion of Traffic and transport chapter of PEIR</li> <li>• Discussion of access and traffic management</li> <li>• Discussion of existing highway issues along onshore route</li> <li>• Identification of requirements for the Transport Assessment</li> </ul>

### Issues agreed

1.4.9.2 The following issues have been agreed with traffic and transport stakeholders:

- The extent of the traffic and transport study area is appropriate
- Baseline data used within the assessment and data limitations
- Visibility standards would be met for new accesses onto the highway network
- Access for construction traffic routing through Abergele would not be discounted but a survey would be completed to confirm levels of congestion
- Traffic management measures could be implemented on A547.

### Issues under discussion

1.4.9.3 The following issues are still under discussion:

- Information on the design and location of the traffic management measures
- The design of the new access locations onto the public highway.

### Summary of progress

1.4.9.4 The baseline characterisation has been agreed and the assessment has been undertaken on this basis.

## 1.4.10 Noise and vibration consultation

### Overview

1.4.10.1 Consultation to date with stakeholders relevant to noise and vibration has been undertaken via email to confirm the proposed monitoring locations for baseline sound surveys. Further information about the locations is provided in Volume 7, Annex 9.1: Baseline Sound Survey of the Environmental Statement (Document Reference F7.9.1).

**Table 1.31: Noise and vibration consultation held to date and anticipated to take place throughout the pre-application phase.**

Date	Participants	Focus of consultation
September 2022	Conwy CBC and Denbighshire CC	<ul style="list-style-type: none"> <li>• To confirm the proposed monitoring locations and approach for the baseline sound survey</li> </ul>

## MONA OFFSHORE WIND PROJECT

Date	Participants	Focus of consultation
25 August 2023 (via email)	Conwy CBC and Denbighshire CC	<ul style="list-style-type: none"> <li>To confirm the proposed monitoring locations and approach for the baseline sound survey</li> </ul>

### Issues agreed

- 1.4.10.2 The following issues have been agreed with noise and vibration stakeholders:
- The extent of the noise and vibration study area is appropriate
  - The monitoring locations and approach of the baseline sound surveys

### Issues under discussion

- 1.4.10.3 The following issues are under discussion with noise and vibration stakeholders:
- The sound threshold for the operation of the Onshore Substation
  - The noise and vibration mitigation measures.

### Summary of progress

- 1.4.10.4 The baseline characterisation has been agreed and the assessment has been undertaken on this basis.

## 1.4.11 Socio-economics consultation

### Overview

- 1.4.11.1 A summary of the key consultation undertaken with stakeholders relevant to socio-economics is presented in Table 1.32. Further information is provided in Volume 4, Chapter 3: Socio-economics of the Environmental Statement (Document Reference F4.3).

**Table 1.32: Socio-economics consultation held to date and anticipated to take place throughout the pre-application phase.**

Date	Participants	Focus of consultation
January 2023	Barrow Port, Cumbria Local Enterprise Partnership (LEP), Liverpool City Region Combined Authority, WG	<ul style="list-style-type: none"> <li>To consider including Birkenhead Port and Mostyn Port within the same impact area.</li> <li>To consider capacity of ports and suitability of existing infrastructure in handling large scale construction</li> <li>Investment into infrastructure at port locations required to provide support during construction phase</li> <li>Consider sharing work amongst ports across the Offshore Energy Alliance cluster to sustain capability</li> <li>Consider building apprenticeship programmes and using skills and training facilities already in place.</li> <li>Consider how to make skills sustainable beyond construction of single offshore wind farm and understand time scales for demand.</li> </ul>

## MONA OFFSHORE WIND PROJECT

---

### Issues agreed

1.4.11.2 The following issues have been agreed:

- The extent of the economics and social study areas are considered appropriate
- Baseline data used within the assessment and data limitations

### Issues under discussion

1.4.11.3 No issues are currently under discussion.

## **1.5           References**

Defra (2012) Habitats Regulations, Evidence plans for Nationally Significant Infrastructure Projects. September 2012.

Natural England (2022), Offshore Wind Marine Environmental Assessments: Best Practice Advice for Evidence and Data Standards. Phase II: Expectations for pre-application engagement and best practice guidance for the Evidence Plan Process.

The Planning Inspectorate (2017), Advice Note 11 Annex H Evidence Plan for Habitats Regulations Assessments of Nationally Significant Infrastructure Projects.