

MONA OFFSHORE WIND PROJECT

Environmental Statement

Volume 7, Annex 7.3: Published recreational resources plan technical report

Document Number: MOCNS-J3303-RPS-10128

Document Reference: F7.7.3

APFP Regulations: 5(2)(a)

February 2024

F01



Image of an offshore wind farm

MONA OFFSHORE WIND PROJECT

Document status

Version	Purpose of document	Authored by	Reviewed by	Approved by	Review date
F01	Application	RPS	Mona Offshore Wind Ltd	Mona Offshore Wind Ltd	February 2024

Prepared by:

RPS

Prepared for:

Mona Offshore Wind Ltd.

MONA OFFSHORE WIND PROJECT

Contents

1	PUBLISHED RECREATIONAL RESOURCES PLAN TECHINCAL REPORT.....	1
1.1	Introduction	1
1.2	Study area	1
1.3	Methodology	1
1.4	Results	2
1.5	References	7

Tables

Table 1.1:	Summary of key desktop sources.	1
------------	--------------------------------------	---

Figures

Figure 1.1:	Recreational resources within the land use and recreation study area (sheet 1).	3
Figure 1.2:	Recreational resources within the land use and recreation study area (sheet 2).	4
Figure 1.3:	Recreational resources within the land use and recreation study area (sheet 3).	5
Figure 1.4:	Recreational resources within the land use and recreation study area (sheet 4).	6

MONA OFFSHORE WIND PROJECT

Glossary

Term	Meaning
Agricultural Land Classification	Agricultural Land Classification (ALC) is a grading system used to assess and compare the quality of agricultural land in England and Wales. ALC is graded from 1 to 5. Grade 1 to 3a are categorised as Best and Most Versatile Land (BMV).
Farm Holding	Land and buildings used for horticulture, livestock, grazing and various other uses, which are commercial in nature.
Recreational resources	Recreational facilities, such as areas of public access and public rights of way.
National Cycle Network	The National Cycle Network is a UK-wide network of signed paths and routes for walking, cycling, wheeling, and exploring outdoors.
Active Travel Areas/Routes	Areas or walking/cycling routes identified in accordance with Active Travel (Wales) Act.

Acronyms

Acronym	Description
MAFF	Ministry of Agriculture, Fisheries and Food
MAGIC	Multi-agency Geographic Information for the Countryside
MHWS	Mean High Water Springs
NCR	National Cycle Route
PRoW	Public Rights of Way

Units

Unit	Description
%	Percentage
km ²	Square kilometres

1 PUBLISHED RECREATIONAL RESOURCES PLAN TECHINICAL REPORT

1.1 Introduction

1.1.1.1 This technical report provides details of the published recreational resources within the Mona Onshore Development Area. This information has been used to inform the baseline environment and assessment in Volume 3, Chapter 7: Land use and recreation of the Environmental Statement.

1.2 Study area

1.2.1.1 The land use and recreation study area comprises all land within the Mona Onshore Development Area, landward of Mean High Water Springs (MHWS). The following aspects of the environment have been considered within the land use and recreation study area:

- Recreational resources, including recreational facilities (e.g. coastal areas, camp sites, caravan sites, visitor attractions, golf clubs), Public Rights of Way (PRoW) and other promoted routes (e.g. National Cycle Routes (NCRs), Long Distance Footpaths, Active Travel Routes)
- Users of recreational resources, including pedestrians, cyclists, equestrians and other forms of recreational activities
- Land used by the local communities, including public open space (e.g. registered parks and gardens, playgrounds, public beaches), Common Land and village greens, which are either owned by the Local Authority, privately owned, or belong to the Welsh Government.

1.2.1.2 The location and geographic extent of the land use and recreation study area is presented in Figure 1.1 to Figure 1.4 of this technical report below.

1.3 Methodology

Desktop study

1.3.1.1 Information on recreational resources within the land use and recreation study area was collected through a detailed desktop review of existing studies and datasets. These are summarised at Table 1.1 below.

Table 1.1: Summary of key desktop sources.

Title	Source	Year	Author
Access Land and Common Land	DataMapWales	2016	Welsh Government
Active Travel Route mapping data	DataMapWales	2016	Welsh Government
Areas of Public Open Space	DataMapWales	2016	Welsh Government
Multi-agency Geographic Information for the Countryside (MAGIC).	MAGIC	2023	Defra

MONA OFFSHORE WIND PROJECT

Title	Source	Year	Author
National Trails mapping data.	National Trails	2023	National Trails
NCR map data of signed paths and routes for walking, wheeling, cycling and exploring outdoors.	Sustrans	2023	Sustrans
Ordnance Survey 1:25,000 mapping	Ordnance Survey website	2023	Ordnance Survey
Recreation mapping data, including definitive PRow for Conwy County Borough Council	Conwy County Borough Council website	2023	Conwy County Borough Council
Recreation mapping data, including definitive PRow for Denbighshire County Council	Denbighshire County Council website	2023	Denbighshire County Council

1.4 Results

- 1.4.1.1 The location and geographic extent of recreational resources within the land use and recreation study area are presented in Figure 1.1, Figure 1.2, Figure 1.3 and Figure 1.4 of this technical report below. To avoid obscuring important data, labels have only been provided for PRow and other promoted routes that coincide with the land use and recreation study area.

MONA OFFSHORE WIND PROJECT

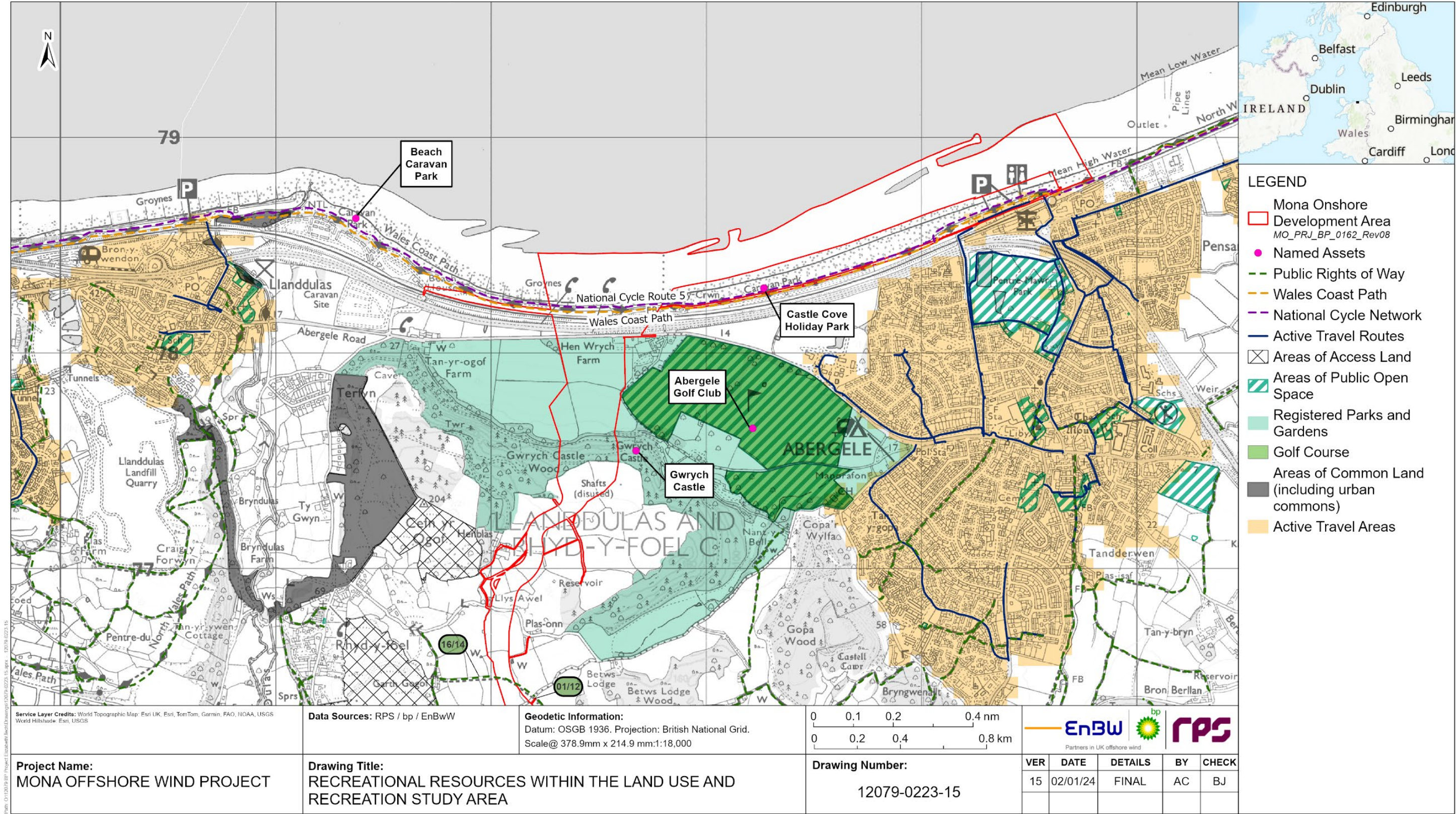


Figure 1.1: Recreational resources within the land use and recreation study area (sheet 1).

MONA OFFSHORE WIND PROJECT

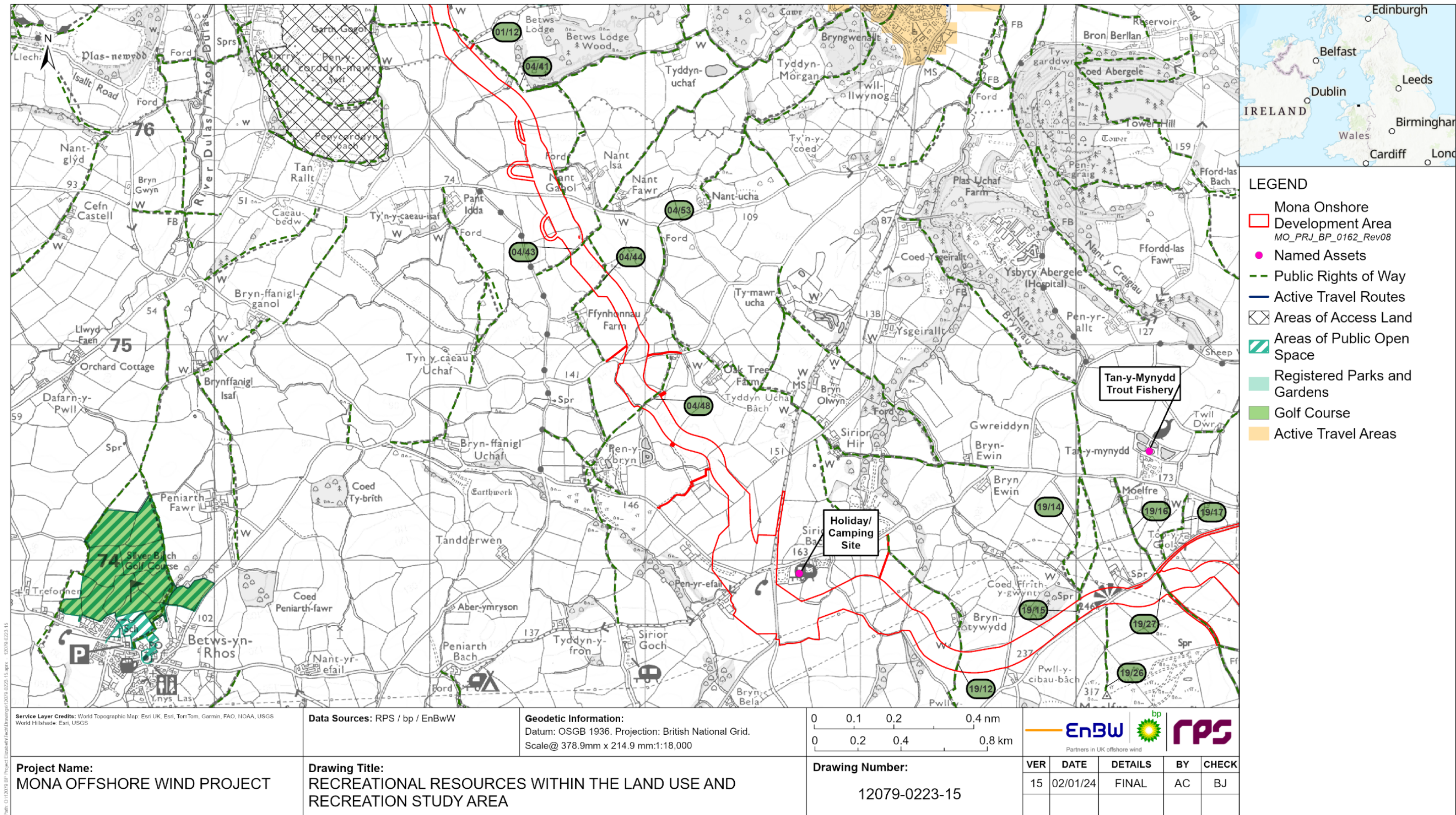


Figure 1.2: Recreational resources within the land use and recreation study area (sheet 2).

MONA OFFSHORE WIND PROJECT

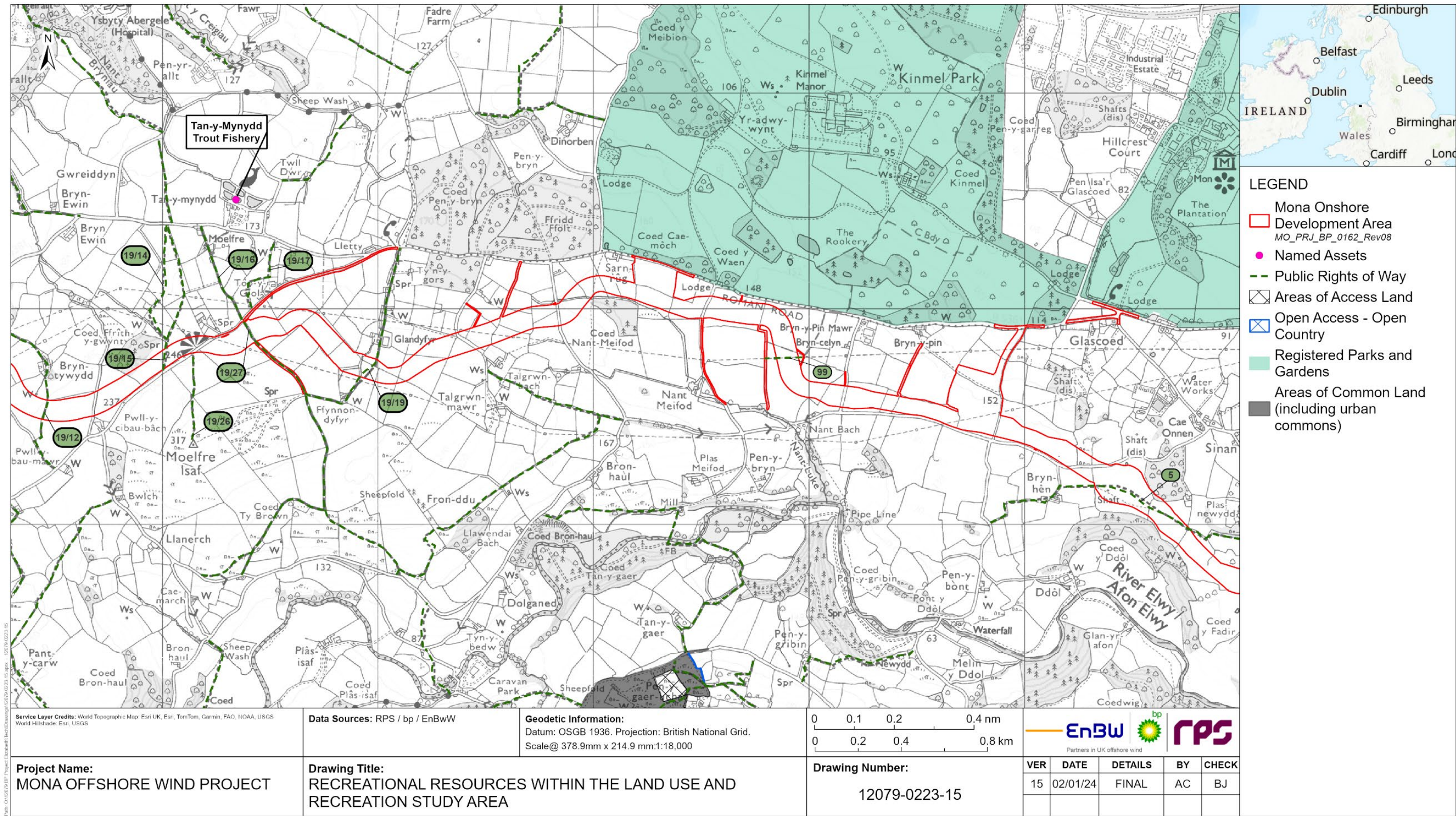


Figure 1.3: Recreational resources within the land use and recreation study area (sheet 3).

MONA OFFSHORE WIND PROJECT

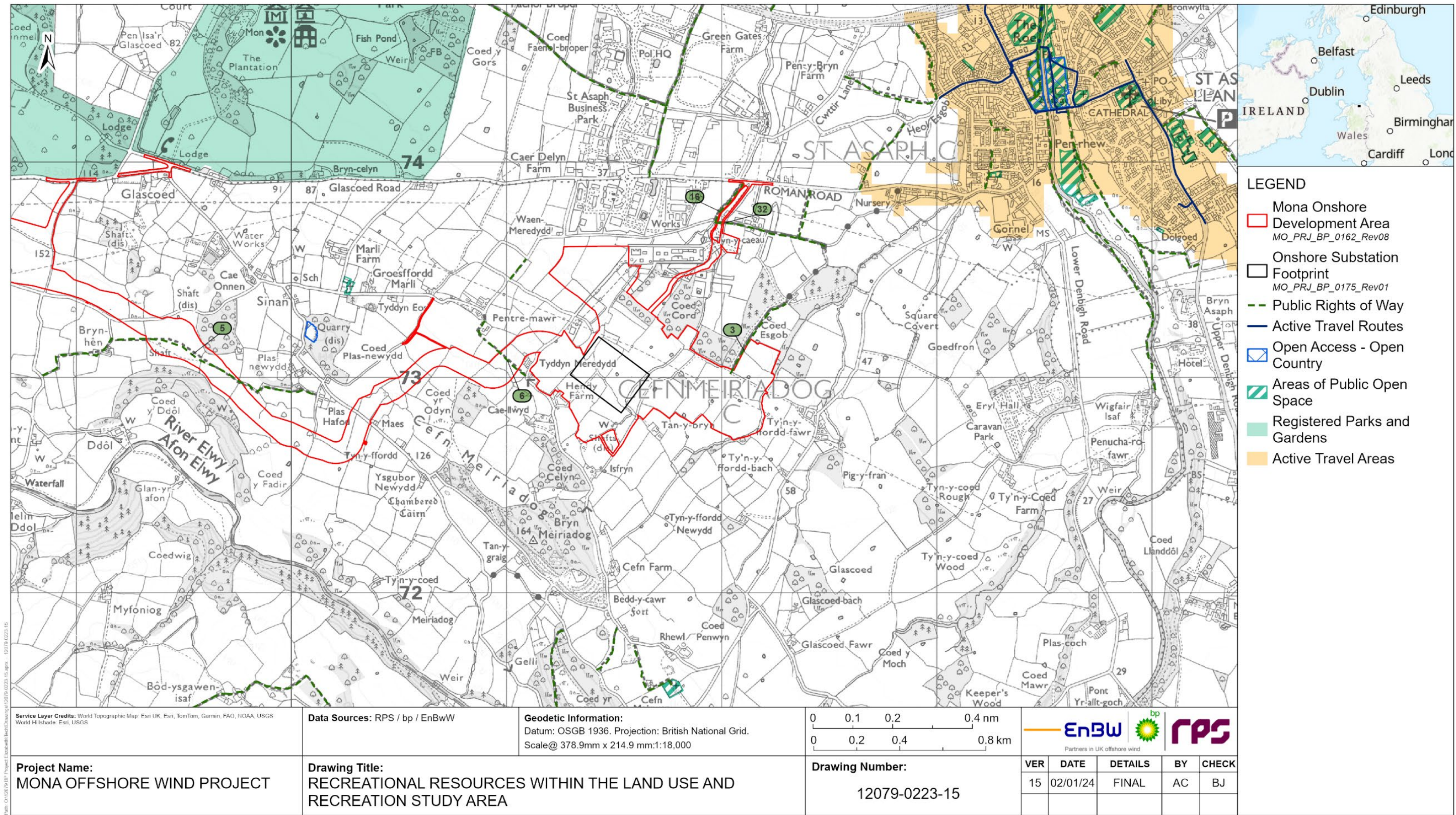


Figure 1.4: Recreational resources within the land use and recreation study area (sheet 4).

1.5 References

Conwy County Borough Council (2023) Recreation mapping data. Available at: <https://www.conwy.gov.uk/en/Resident/Leisure-sport-and-health/Coast-and-Countryside/Public-Rights-of-Way.aspx> Accessed: November 2023

Denbighshire County Borough Council (2023) Recreation mapping data. Available at: <https://maps.denbighshire.gov.uk/MyDenbighshire.aspx> Accessed: November 2023

Sustrans (2023) National Cycle Network mapping data. Available at: <https://www.sustrans.org.uk/> Accessed: November 2023

Welsh Government (2023) DataMapWales. Available at: DataMapWales (gov.wales) Accessed: November 2023

Department for Environment, Food and Rural Affairs (Defra) (2019): MAGIC (geographic information about the natural environment). Available at: <http://magic.defra.gov.uk>. Accessed: November 2023