

MONA OFFSHORE WIND PROJECT

Environmental Statement

Volume 7, Annex 6.3: Visual baseline technical report - onshore development

Reference Number: MOCNS-J3303-RPS-10122

Document Reference: F7.6.3

APFP Regulations: 5(2)(a)

February 2024

F01



MONA OFFSHORE WIND PROJECT

Document status					
Version	Purpose of document	Authored by	Reviewed by	Approved by	Review date
F01	For application	RPS	Mona Offshore Wind Ltd	Mona Offshore Wind Ltd	Feb 2024
Prepared by:		Prepared for:			
RPS		Mona Offshore Wind Ltd.			

MONA OFFSHORE WIND PROJECT

Contents

1	VISUAL BASELINE TECHNICAL REPORT – ONSHORE DEVELOPMENT.....	1
1.1	Introduction	1
1.2	Study area	1
1.3	Consultation.....	1
1.4	Methodology	1
1.5	Site-specific surveys.....	2
1.5.1	Overview	2
1.5.2	Methodology.....	3
1.6	Summary	14
1.7	References	15

Tables

Table 1.1:	Summary of surveys undertaken to inform the landscape and seascape visual baseline.....	2
Table 1.2:	Onshore Substation and Mona Onshore Development Area representative viewpoint descriptions.....	3
Table 1.3:	Mona baseline photographic data at representative viewpoint locations	12

Appendix

APPENDIX A :	PLANS	16
APPENDIX B :	REPRESENTATIVE VIEWPOINTS	18

MONA OFFSHORE WIND PROJECT

Glossary

Term	Meaning
Landfall	The area in which the offshore export cables make contact with land and the transitional area where the offshore cabling connects to the onshore cabling.
Maximum design scenario	The scenario within the design envelope with the potential to result in the greatest impact on a particular topic receptor, and therefore the one that should be assessed for that topic receptor.
Mona Offshore Wind Project Boundary	The area containing all aspects of the Mona Offshore Wind Project, both offshore and onshore.
Visual receptors	People within the study area with potential views of the Mona Offshore Wind Project.
Wind turbines	The wind turbine generators, including the tower, nacelle and rotor.
Zone of Theoretical Visibility	A map, usually digitally produced, showing areas of land within which, a development is theoretically visible.

Acronyms

Acronym	Description
AOD	Above Ordnance Datum
AONB	Area of Outstanding Natural Beauty (now termed a National Landscape)
NL	National Landscape (formerly Area of Outstanding Natural Beauty)
OS	Ordnance Survey
PEIR	Preliminary Environmental Information Report
SLA	Special Landscape Area
SLVIA	Seascape Landscape and Visual Impact Assessment
TGN	Technical Guidance Note
ZTV	Zone of Theoretical Visibility

Units

Unit	Description
km	Kilometres
m	Metres

1 VISUAL BASELINE TECHNICAL REPORT – ONSHORE DEVELOPMENT

1.1 Introduction

1.1.1.1 This technical report describes the visual baseline that will form the onshore part of the Seascape, Landscape and Visual Impact Assessment (SLVIA) provided in Volume 3, Chapter 6: Landscape and visual resources of the Environmental Statement.

1.1.1.2 A separate visual resources technical report relates to the offshore visual baseline and is provided in Volume 6, Annex 8.3: Visual baseline technical report – offshore development of the Environmental Statement. This latter report forms part of the SLVIA within Volume 2, Chapter 8: Seascape and visual resources of the Environmental Statement.

1.2 Study area

1.2.1.1 The SLVIA study area for the Mona Onshore Development Area, hereafter referred to as ‘the SLVIA onshore study area’, is shown in Appendix A, Figure A1. The SLVIA onshore study area is based on the height of the Onshore Substation, which in turn formed the Zone of Theoretical Visibility (ZTV). This was agreed with Natural Resources Wales (NRW) at a SLVIA workshop, held in September 2022 (refer to Table 6.7 of Volume 3, Chapter 6: Landscape and visual resources of the Environmental Statement).

1.2.1.2 The SLVIA onshore study area comprises the area of land to be temporarily and permanently occupied during construction, operations and maintenance and decommissioning of the Mona Offshore Wind Project, which includes areas of the sea, together with:

- 1 km buffer at the landfall and from the Mona onshore cable corridor (i.e. the area landward of Mean Low Water Springs (MLWS)); and
- 10 km buffer from the Onshore Substation.

1.2.1.3 The buffers used to define the SLVIA onshore study area are based on the Maximum Design Scenario (MDS) set out in Volume 3, Chapter 6: Landscape and visual resources of the Environmental Statement.

1.3 Consultation

1.3.1.1 A summary of the Section 42 consultation on the Preliminary Environmental Information Report (PEIR) associated with landscape and seascape for the Mona Onshore Development Area is presented in Volume 3, Chapter 6: Landscape and visual resources of the Environmental Statement. The SLVIA was discussed at the EWG on 04 October 2023. However, no specific requests were made for additional representative viewpoint photography at this stage.

1.4 Methodology

1.4.1.1 The photography follows the Landscape Institute guidance set out in Technical Guidance Note (TGN) 06/19: Visual Representation of Development Proposals (Landscape Institute, 2019). For the PEIR, 13 representative viewpoint locations for the Onshore Substation were identified, based on the ZTV of the Onshore Substation.

MONA OFFSHORE WIND PROJECT

Six representative viewpoints were identified for the Mona Landfall and Onshore Cable Corridor, based on Ordnance Survey (OS) base mapping.

1.4.1.2 Following a reduction in the area that the Onshore Substation required and the size of the substation buildings, post PEIR, another ZTV was generated. This confirmed the location of most of the original representative viewpoints, but as the area of the substation platform and size of the buildings had been reduced, those original representative viewpoints that fell outside the revised ZTV have not been taken forward. The geographical coverage of representative viewpoint locations was considered to be uneven and so viewpoints were changed and more viewpoints added. The revised representative viewpoint locations (representative viewpoints 1 to 22) are shown in Appendix A, Figure A1.

1.4.1.3 The representative viewpoints for the Landfall, Mona Onshore Cable Corridor and Onshore Substation (representative viewpoints 23 to 29) remain the same as within the PEIR, and are also shown in Appendix A, Figure A1. All viewpoints, including those now removed from the assessment (for completeness) are listed and described in Table 1.2. Appendix B contains baseline summer and winter photography of all representative viewpoints listed in Table 1.2.

1.5 Site-specific surveys

1.5.1 Overview

1.5.1.1 A summary of the surveys undertaken to inform the landscape and seascape visual baseline situation is outlined in Table 1.1.

Table 1.1: Summary of surveys undertaken to inform the landscape and seascape visual baseline.

Title	Extent of survey	Overview of survey	Survey contractor	Date
SLVIA Photography	Mona Onshore Development Area	Onshore representative viewpoint photography (winter)	RPS	17 to 18 March 2022
	Onshore Substation	Onshore representative viewpoint photography (summer)	RPS	21 June 2022
	Onshore Substation	Onshore representative viewpoint photography (summer)	RPS	26 to 27 July 2022
	Onshore Substation	Onshore representative viewpoint photography (winter)	RPS	17 to 22 March 2023
	Mona Onshore Development Area	Onshore representative viewpoint photography (summer)	RPS	9 to 10 August 2023
	Onshore Substation	Onshore representative viewpoint photography (summer)	RPS	25 September 2023
	Onshore Substation	Onshore representative viewpoint and character photography	RPS	13 and 14 November 2023

MONA OFFSHORE WIND PROJECT

Title	Extent of survey	Overview of survey	Survey contractor	Date
	Onshore Substation	Onshore representative viewpoint photography (winter)	RPS	11 December 2023

1.5.2 Methodology

Procedure for taking photographs at representative viewpoints

- 1.5.2.1 The representative viewpoint photography was undertaken in favourable weather conditions and clear visibility, where possible. The photography in Appendix B has been used as the baseline for photomontages. Volume 7, Annex 6.4: Landscape, seascape and visual impact assessment methodology of the Environmental Statement, sets out the detailed procedures undertaken for the photography and photomontages in relation to the Mona Onshore Development Area.

Photography

- 1.5.2.2 The photography undertaken during site surveys is presented as a series of panoramas in Appendix B. There are two photographs for each representative viewpoint; one summer and one winter. Both show 180° panoramas, to show the wider context of the landscape. The approximate locations of the Onshore Substation are identified on the photographs (B1 – B22).

Representative viewpoint descriptions

- 1.5.2.3 Table 1.2 provides details of the representative viewpoint location and status, the visual receptor type, and the nature and character of the view (refer to the viewpoint location plan within Appendix A, Figure A1. Viewpoints 23 to 30 relate to the Mona Onshore Development Area as opposed to the Onshore Substation. As such, reference is made to the LANDMAP aspect areas presented in Volume 7, Annex 6.2: Landscape and seascape character baseline technical report of the Environmental Statement.

Table 1.2: Onshore Substation and Mona Onshore Development Area representative viewpoint descriptions.

Representative viewpoint reference	Location/receptor	Representative viewpoint description
1. View southeast along farm track from minor road to Tyddyn Meredydd Appendix B, Representative Viewpoint B1	Walkers using road, cyclists and occupiers of vehicles	The viewpoint lies at approximately 55 m Above Ordnance Datum (AOD) and is located 150 m from the Onshore Substation. This is a filtered view, southeast from the local road which passes through the landscape around the Mona Onshore Development Area, at the junction of a farm track with the lane. The metal gate and timber fence at the access to the National Grid sealing end compound allow views through to the base of the steel lattice pylon, which forms the dominant element in the view. Existing bushy hedgerows and replanted sections of hedgerow screen and filter views into the compound and beyond towards the Onshore Substation. Mature hedgerow trees provide further sporadic vegetation across the view. The land rises to the right of the view at

MONA OFFSHORE WIND PROJECT

Representative viewpoint reference	Location/receptor	Representative viewpoint description
		Cefn Meiriadog, visible as glimpses of pasture, hedgerows and trees. Distant glimpses of the hills of the Clwydian Range and Dee Valley National Landscape (NL) are visible along the farm track on the horizon. This is a distinctive view of energy infrastructure within farmland.
2. View north from minor road to the south of Isfryn Farm Appendix B, Representative Viewpoint B2	Walkers using road, cyclists and occupiers of vehicles	<p>The viewpoint lies at approximately 90 m AOD and is located 139 m from the Onshore Substation.</p> <p>This is a panoramic view north from a local road in an elevated location at the base of Cefn Meiriadog. Pasture fields contained by hedgerows and scattered mature trees slope down to the wide-open landscape of the coastal plain where a patchwork of mixed farmland, trees and dispersed settlements extend to the coast with a narrow sliver of sea on the horizon. The steel lattice pylon adjacent to the Mona Onshore Development Area is prominent in the centre of the view. Lower-level pylons carry overhead power lines to the National Grid substation, partly visible beyond intervening trees as a cluster of pale grey buildings, in the centre of the view. In the distance the rugged, undulating profile of the Clwydian Range rises up as woodland and moorland covered uplands. This is an attractive rural view with recognisable elements of energy infrastructure.</p>
3. View east-southeast from public footpath 105/6 to the southeast of PentreMawr Appendix B, Representative Viewpoint B3	Walkers using public right of way	<p>The viewpoint lies at approximately 82 m AOD and is located 336 m from the Onshore Substation.</p> <p>This is a panoramic view east-southeast from a public footpath which crosses a slightly elevated area of farmland. Pasture fields contained by low, managed hedgerows and post and wire fences and scattered mature trees slope down to the gently undulating landscape of mixed farmland and small, woodland blocks. The steel lattice pylon is prominent in the foreground, with further pylons extending east, across the landscape away from the viewer. Lower-level pylons carry overhead power lines to the National Grid substation, partly visible beyond intervening trees as a cluster of pale grey buildings. The group of farm buildings at Tyddyn Meredydd lies at the base of the slope in the right (south) of the view. The settlement of St Asaph is visible in the distance in the centre of the view. In the distance the rugged, undulating profile of the Clwydian Range appears as woodland and moorland covered uplands. This is an attractive rural view with recognisable elements of energy infrastructure.</p>
4. View southeast from public footpath 105/7 to the southwest of Waen-Meredydd Appendix B, Representative Viewpoint B4	Walkers using public right of way	<p>The viewpoint lies at approximately 55 m AOD and is located 490 m from the Onshore Substation.</p> <p>This is an open view southeast from a public footpath crossing farmland. An open pasture field occupies the foreground. Low, managed hedgerows with scattered mature oak trees form field boundaries. The pasture farmland extends over the landscape as it rises towards the fringes of Cefn Meiriadog. The row of pylons and overhead power lines cross the landscape as prominent features. Smaller pylons carry overhead power lines to the National Grid substation, partly visible beyond intervening trees as a</p>

MONA OFFSHORE WIND PROJECT

Representative viewpoint reference	Location/receptor	Representative viewpoint description
		cluster of pale grey buildings on the left (north) of the view. The tops of mature trees within the Mona Onshore Development Area are visible above intervening hedgerows. In the distance the tops of the Clwydian Range rise up above intervening woodland. This is an attractive rural view with recognisable elements of energy infrastructure.
5. View southeast from junction of farm track with minor road at Waen -Meredydd Appendix B, Representative Viewpoint B5	Walkers using track	The viewpoint lies at approximately 47 m AOD and is located 495 m from the Onshore Substation. This is a partly restricted view southeast from the junction of the local road and farm access track on the edge of the St Asaph Business Park. A low, managed hedgerow and field gate entrance extend across the foreground of the view. Part of the pasture field is visible through the gate, extending up to a line of bushy hedgerow vegetation and trees in front of the Mona Onshore Development Area. The pasture farmland and woodland blocks extend over the landscape as it rises up Cefn Meiriadog. The row of pylons and overhead power line cross the landscape as prominent features. Lower-level pylons carry overhead power lines to the National Grid substation left of the view. Timber poles carry overhead power lines in the foreground. This is a typical rural-edge view over farmland with recognisable elements of energy infrastructure.
6. View northwest from minor road at Ty'n-y-ffordd-fawr Appendix B, Representative Viewpoint B6	Walkers using road, cyclists and occupiers of vehicles	The viewpoint lies at approximately 58 m AOD and is located 817 m from the Onshore Substation. This is an open view northwest from a local road at the access to Ty'n-y-ffordd-fawr farm. A pasture field extends over the majority of the foreground with farm buildings framing the right side of the view. Hedgerows with scattered mature oak trees and blocks of mature woodland extend across the gently undulating middle distance. The land rises to the low ridge of Cefn Meiriadog on the left (south) of the view. The row of pylons which lie adjacent to the Mona Onshore Development Area are prominent crossing the landscape. The tops of mature trees within the site are visible in the distance. This is a typical rural view with recognisable elements of energy infrastructure.
7. View southwest from public footpath 208/13 west of St. Asaph Appendix B, Representative Viewpoint B7	Walkers using public right of way	The viewpoint lies at approximately 39 m AOD and is located 1.55 km from the Onshore Substation. This is an open view southwest from a public footpath crossing farmland. An open, flat, pasture field occupies the foreground. Low managed hedgerows with scattered mature oak trees form field boundaries. Farm and commercial buildings are scattered throughout the landscape. The farmland extends over the landscape as it rises towards Cefn Meiriadog. Power lines cross the foreground of the view, on wooden poles, with a row of pylons beyond, forming prominent features in the landscape. The tops of mature trees within the Mona Onshore Development Area are potentially visible above intervening hedgerows. This is a typical rural view with recognisable elements of energy infrastructure.

MONA OFFSHORE WIND PROJECT

Representative viewpoint reference	Location/receptor	Representative viewpoint description
<p>8. View southeast from field gate off the B5381, Glascoed Road, adjacent to Bryn-celyn</p> <p>Appendix B, Representative Viewpoint B8</p>	Cyclists and occupiers of vehicles	<p>The viewpoint lies at approximately 86 m AOD and is located 1.44 km from the Onshore Substation.</p> <p>This is an open view southeast, from a field gate, to the south of the Glascoed Road and set back from it. Pasture fields contained by low managed hedgerows extend up the landform on the edge of Cefn Meiriadog on the right of the view. Clusters of farm buildings set within mature trees cloth the skyline. The landform slopes down to the left towards low lying, mixed farmland. In the distance the rugged, undulating profile of the Clwydian Range rises up as woodland and moorland covered uplands. The row of pylons which lie adjacent to the Mona Onshore Development Area are prominent crossing the landscape. The tops of mature trees within the site are visible in the distance. This is an attractive rural view with prominent elements of energy infrastructure.</p>
<p>9. View south-southeast from public bridleway 201/9 east of Bodelwyddan Park</p> <p>Appendix B, Representative Viewpoint B9</p>	Equestrians and walkers using bridleway	<p>The viewpoint lies at approximately 19 m AOD and is located 1.68 km from the Onshore Substation.</p> <p>This is a middle-distance, framed view south-east from a bridleway crossing farmland on the edge of the parkland estate, defined by the wall on the right. An open, flat pasture field occupies the foreground between tall bushy hedgerows with dense mature oak trees. Vegetation frames a view of flat farmland with low hedgerows and trees which rises in the distance to the low ridge of Cefn Meiriadog. A row of pylons crosses the landscape at the base of the ridge, forming recognisable features. The tops of mature trees within the Mona Onshore Development Area are visible above intervening hedgerows. This is a typical rural view with recognisable elements of energy infrastructure.</p>
<p>10. View south from public footpath 206/27 and access track to Rhuddlan Castle, adjacent to Twthill</p> <p>Appendix B, Representative Viewpoint B10</p>	Walkers using public right of way/visitors to the castle / heritage assets	<p>The viewpoint lies at approximately 25 m AOD and is located 4.63 km from the Onshore Substation.</p> <p>This is a panoramic view from open space on the southern edge of the settlement of Rhuddlan, near Rhuddlan Castle. The location is elevated above the River Clwyd and forms the location for the Pleasant View Caravan Park, in the left (east) of the viewpoint. The majority of the view is occupied by land at a lower level where the river and tributaries meander through a series of meadows with flood banks, hedgerows and scattered trees. Farmsteads are visible within this agricultural landscape. The settlement of St. Asaph is partially visible within mature trees in the distance. The landform extends to the low, wooded ridge at Cefn Meiriadog, which forms a backdrop in the centre of the view. The landform rises to a higher and more dramatic ridge of the Clwydian Range and Dee Valley NL in the left (east) of the view. This is an attractive, rural view from a settlement edge.</p>
<p>11. View west-southwest from Offa's Dyke Path, to the south of Moel Maenefa</p>	Walkers using National Trail in the Clwydian Range and Dee Valley NL	<p>The viewpoint lies at approximately 250 m AOD and is located 7.09 km from the Onshore Substation.</p> <p>This is a panoramic view west-southwest from the National Trail which crosses the uplands of the Clwydian Range. The elevated location and low moorland vegetation in the</p>

MONA OFFSHORE WIND PROJECT

Representative viewpoint reference	Location/receptor	Representative viewpoint description
Appendix B, Representative Viewpoint B11		foreground allows views over the whole study area for the Mona Onshore Development Area. The steep sided hills slope down to the gently undulating farmed landscape below. A patchwork of mixed arable and pasture fields is defined by hedgerows, scattered mature trees and blocks of woodland. In the distance, to the right of the view, lies the farmed coastal plain, extending to the sea beyond. The land rises in the distance and the distinctive headland of the Great Orme is visible extending out to sea. The mountains of Eryri are shrouded in low cloud. Several overhead power lines are visible crossing the landscape. The clusters of turbines at Rhyl Flats, Gwynt y Môr and North Hoyle Offshore Wind Farms are visible within the distant seascape, forming a distinctive element of the seascape where it extends along the North Wales coast. This is an attractive, elevated view of farmland and settled coastline.
12. View west-southwest from Offa's Dyke Path to the south of Pen-y-Mynydd Appendix B, Representative Viewpoint B12	Walkers using National Trail in the Clwydian Range and Dee Valley NL	The viewpoint lies at approximately 200 m AOD and is located 6.46 km from the Onshore Substation. This is a panoramic view west-southwest from Offa's Dyke Path National Trail which crosses the uplands of the Clwydian Range. The elevated location and low scrubby vegetation in the foreground allow for views over the whole study area for the Mona Onshore Development Area. A line of mature trees and woodland cross the steep sided hills which partly filter views of the gently undulating farmed landscape below. A patchwork of mixed arable and pasture fields is defined by hedgerows, scattered mature trees and blocks of woodland. Scattered farmsteads are in the rural landscape. In the distance, to the right of the view, lies the farmed coastal plain, extending to filtered views of the sea beyond. The land rises in the distance to form an undulating ridge of upland farmland. The mountains of Eryri are partly visible within cloud. Several overhead power lines are visible crossing the landscape. The clusters of turbines at Rhyl Flats, Gwynt y Môr and North Hoyle Offshore Wind Farms are visible within the distant seascape, forming a distinctive element of the seascape where it extends along the North Wales coast. This is an attractive, elevated view of farmland and distant mountains.
13. View southwest from Cwttir Lane, south of the junction with Heol Esgob Appendix B, Representative Viewpoint B13	Walkers using road, cyclists and occupiers of vehicles	The viewpoint lies at approximately 30 m AOD and is located 1.36 km from the Onshore Substation. This is an open view, southwest from Cwttir Lane, to the northeast of St Asaph Business Park. A field access gate with timber post and rail fences allows an open view into a pasture field surrounded by bushy hedgerows with some mature oak trees. Mature, broadleaf woodland is a feature of the view, within the middle-distance and on the Cefn Meiriadog ridge that forms the backdrop to the view (and skyline). The majority of the farmland, in the view is laid to pasture. Isolated farmsteads and houses are also features of the view. The 400 kV power lines are visible in the view. This is a view of a rural landscape with recognisable elements of energy infrastructure.

MONA OFFSHORE WIND PROJECT

Representative viewpoint reference	Location/receptor	Representative viewpoint description
<p>14. View northwest from minor road close to junction with access track to Coed Kendrick/Wigfair Home Farm</p> <p>Appendix B, Representative Viewpoint B14</p>	Walkers using road, cyclists and occupiers of vehicles	<p>The viewpoint lies at approximately 75 m AOD and is located 1.7 km from the Onshore Substation.</p> <p>This is an open view, northwest through a gap in the roadside hedgerow of a minor road. The gently undulating farmed landscape comprises pasture fields defined by low managed hedgerows with scattered mature, remnant oak trees. Woodland copses are characteristic elements in the middle-distance. The pylons carrying the 400 kV power lines are visible to the right (north) of the photograph. In the distance the glimpses of the Clwydian Range are visible through gaps in trees. This is a view of a rural landscape with recognisable elements of energy infrastructure.</p>
<p>15. View south from the North Wales Path (footpath 26/30)/National Cycle Route 84, northwest of Rhuddlan, adjacent to River Clwyd</p> <p>Appendix B, Representative Viewpoint B15</p>	Walkers and cyclists	<p>The viewpoint lies at approximately 5 m AOD and is located 5.54 km from the Onshore Substation.</p> <p>The view is a wide, open panorama, across the floodplain of the River Clwyd and River Elwy. The flat farmland is mostly divided by ditches interspersed with small shrubs and small trees. The Cefn Meiriadog hills and those beyond form the backdrop to the flat farmland and are seen on the skyline. As the land rises up, the field boundaries are marked by more substantial hedgerows and the fields interspersed with mature woodland. The 400 kV line is seen crossing the hills. To the left (east) of the viewpoint, the Clwydian Range forms the skyline and to the right (west) the mountains of Eryri are visible.</p>
<p>16. View southwest from public footpath 206/999 to the southwest of Pengwern College</p> <p>Appendix B, Representative Viewpoint B16</p>	Walkers	<p>The viewpoint lies at approximately 9 m AOD and is located 3.13 km from the Onshore Substation.</p> <p>The view is a wide, open panorama, across the floodplain of the River Clwyd and River Elwy. The flat/very gently undulating farmland is mostly divided by ditches and low, managed hedgerows, some containing isolated trees. The Cefn Meiriadog hills and those beyond form the backdrop to the flat farmland and are seen on the skyline. As the land rises up, the field boundaries are marked by more substantial hedgerows containing trees and the fields are interspersed with small copses and mature woodland. The 400 kV line is seen crossing the hills. To the left (east) of the viewpoint, the Clwydian Range forms the skyline and to the right (west) the mountains of Eryri are visible.</p>
<p>17. View west-southwest from public footpath 208/10, off the Upper Denbigh Road to the south of St. Asaph</p> <p>Appendix B, Representative Viewpoint B17</p>	Walkers	<p>The viewpoint lies at approximately 40 m AOD and is located 2.57 km from the Onshore Substation.</p> <p>This is a wide view, across farmland and the hidden River Elwy, to the Cefn Meiriadog hills. The view is framed by mature trees and woodland, which are a feature of this view. The pylons carrying the 400 kV lines are seen crossing the hills in the distance and crossing the flatter land in the middle of the view. New residential development, on the southern edge of St. Asaph, is seen in the right (north) of the view, in winter, although partly hidden in summer by the mature trees.</p>

MONA OFFSHORE WIND PROJECT

Representative viewpoint reference	Location/receptor	Representative viewpoint description
<p>18. View southwest from panoramic viewpoint at the trig point at Graig Fawr (CRoW Act Access Land) within the Clwydian Range and Dee Valley NL</p> <p>Appendix B, Representative Viewpoint B18</p>	Walkers / people using the Access Land	<p>The viewpoint lies at approximately 153 m AOD and is located 8.50 km from the Onshore Substation.</p> <p>This is a panoramic, 360° view, encompassing the north Wales coast and the Clwydian Hills. The view to the southwest includes the westernmost hills of the Clwydian Range. The town of Dyserth is seen in the middle of the view, with Rhyl on the coast and more distant in the centre of the view the town of Rhuddlan. Rhyl is the closest of the coastal towns to the viewpoint. The north coast of Wales is seen stretching round to the right (north) of the view, with the mountains of Eryri beyond. The wind turbines of the closest offshore wind farms are also visible. The coastal plain to the west of the viewpoint is mixed arable and pastoral farmland. Closer to the coast the land is bounded by ditches and low hedgerows, on the gently undulating land, rising to the Cefn Meiriadog hills, the field boundaries are more substantial hedgerows, with mature trees. Mature trees and woodlands are a feature of the lower and upper slopes of the Cefn Meiriadog hills.</p>
<p>19. View southwest from Offa's Dyke Path National Trail /public footpath 405/12 on Prestatyn hillside within the Clwydian Range and Dee Valley NL</p> <p>Appendix B, Representative Viewpoint B19</p>	Walkers	<p>The viewpoint lies at approximately 200 m AOD and is located 10.05 km from the Onshore Substation.</p> <p>This is an elevated view, towards the top of the hillside marking the western extent of the Clwydian Range, above the north Wales coastal plain. Prestatyn, Rhyl, Abergele and Colwyn Bay are seen extending into the distance, along the coast to the Great Orme. The mountains of Eryri are seen in the distance. The wind turbines of the closest offshore wind farms are also visible. Inland, Galt Melyd and Dyserth are visible at the feet of the Clwydian Range, with Rhuddlan visible in the middle-distance. The coastal plain to the west of the viewpoint is mixed arable and pastoral farmland. Closer to the coast the land is bounded by ditches and low hedgerows, on the gently undulating land, rising to the Cefn Meiriadog hills, the field boundaries are more substantial hedgerows, with mature trees. Mature trees and woodlands are a feature of the lower and upper slopes of the Cefn Meiriadog hills.</p>
<p>20. View southeast from the Wales Coast Path, at Pont y Ddraig footbridge over the River Clwyd, Kinnel Bay</p> <p>Appendix B, Representative Viewpoint B20</p>	Walkers, holiday-makers	<p>The viewpoint lies at approximately 6 m AOD and is located 7.89 km from the Onshore Substation.</p> <p>The view inland, from the bridge, is interrupted by the infrastructure of and along the bridge and the coastal road and rail routes. This is a busy view, with the River Clwyd, its bridges and boats being the main character of the composition. The higher land of the Clwydian Range to the left (east) the tops of Cefn Meiriadog in the centre (south) and the mountains of Eryri in the right (west) of the view, form the skyline in most of the view.</p>
<p>21. View southwest from B5429, adjacent to Criccin Cross, southeast of Rhuddlan</p> <p>Appendix B, Representative Viewpoint B21</p>	Walkers using road, cyclists and occupiers of vehicles	<p>The viewpoint lies at approximately 34 m AOD and is located 4.78 km from the Onshore Substation.</p> <p>The view southwest from this location is across a gently undulating landscape, across the coastal plain, within which lies the confluence of the Rivers Elwy and Clwyd. In the foreground, the land to the east of the rivers is higher and</p>

MONA OFFSHORE WIND PROJECT

Representative viewpoint reference	Location/receptor	Representative viewpoint description
		slopes down to the watercourses. The farmland to the west of the rivers is flatter, and more typical of the coastal plain. The backdrop to the view is the Cefn Meiriadog hills. The majority of the farmland is small to medium-sized fields of mixed arable and pasture, divided by hedgerows, some with mature trees. The fields are interspersed with mature broadleaf woodland. The 400 kV overhead powerline is seen on the horizon, as it crosses the hills onto the coastal plain.
22. View west from public footpath 210/6, north of Wern Ddu Appendix B, Representative Viewpoint B22	Walkers	<p>The viewpoint lies at approximately 25 m AOD and is located 3.94 km from the Onshore Substation.</p> <p>The view west from this location is across the valley of the River Clwyd and the River Elwy (hidden from view). The high ground in the middle distance divides the two rivers. The Cefn Meiriadog hills are seen on the horizon, with higher hills, beyond them in places. The farmland either side of the River Clwyd Valley is laid to pasture. Fields are divided by mature hedgerows, with occasional mature trees. The farmland is interspersed with a mix of broadleaf and coniferous woodland/plantations. Pylons carrying the 400 kV power lines are visible.</p>
23. View east from the Wales Coast Path to the east of Llanddulas Beach Appendix B, Representative Viewpoint B23	Walkers, people accessing the beach	<p>The viewpoint lies below 5 m AOD and is located adjacent to the Mona Onshore Development Area.</p> <p>This view east from the Wales Coast Path is along the north coast of Wales. The cliffs above Terfyn are seen in the right (south) of the panorama, with Gwyrch Castle Wood wrapping around the base of the cliffs and on the lower slopes, further east. The A55 and railway transport corridor lies (hidden) between Gwyrch Woods and the Wales Coast Path. The path separates the land and the beach, which is divided by groynes in places. This stretch of the Irish Sea can be seen from Abergele Road. In the distance, the Clwydian Range is visible. The viewpoint is located in LANDMAP Aspect Area CNWVS062, with most of the middle-range views being of CNWVS052, DNBGHVS004 and DNBGHVS002 in view, further along the coast (refer to Volume 7, Annex 6.2: Landscape and seascape character baseline technical report).</p>
24. View west from the Wales Coast Path to the west of Abergele Beach Appendix B, Representative Viewpoint B24	Walkers, people accessing the beach	<p>The viewpoint lies below 5 m AOD and is located within the Mona Onshore Development Area.</p> <p>This view west from the Wales Coast Path is along the north coast of Wales. The embankment on the left (south) of the viewpoint, divides the A55 and railway transport corridor from the cycle-path. The path separates the land and the beach, which is divided by groynes in places. This stretch of the Irish Sea can be seen from Abergele Road. In the middle-distance, the land curves round to the Llandulas. Beyond this is Colwyn Bay and Great Orme is visible. The viewpoint is located in LANDMAP Aspect Area CNWVS062, with most of the middle-range views being of CNWVS053 (beach and intertidal) CNWVS061 and CNWVS033 (urban) in the view, further along the coast (refer to Volume 7, Annex 6.2: Landscape and seascape character baseline technical report).</p>

MONA OFFSHORE WIND PROJECT

Representative viewpoint reference	Location/receptor	Representative viewpoint description
25. View east from Moelfre Isaf summit on public footpath 19/26 Appendix B, Representative Viewpoint B25	Walkers	<p>The viewpoint lies at approximately 317 m AOD and is located 30 m from the onshore cable corridor.</p> <p>This is an elevated view east, along the Mona onshore cable corridor towards the Onshore Substation (not visible). The panoramic view encompasses the southern Irish Sea/north Wales coast to the left (north) with the existing offshore wind farms, and the high land, including the Cefn Meiriadog hills to the left (southeast). The Clwydian Range forms a backdrop to the view. Behind the development along the coast the farmland on the flat/gently undulating coastal plain is visible. The pylons carrying the 400 kV overhead lines pass to the north of the viewpoint, where they cross the ridge of hills onto the coastal plain. Large woods are visible in the middle-ground. The viewpoint is located in the Rhyd y Foel to Abergele Special Landscape Area (SLA). It lies within LANDMAP Aspect Area CNWVS023 (mosaic rolling lowland), a large Aspect Area and classification type, that forms most of the middle ground in the view (refer to Volume 7, Annex 6.2: Landscape and seascape character baseline technical report).</p>
26. View southeast from public footpath 16/14 at Tan y Gopa Road Appendix B, Representative Viewpoint B26	Walkers (on footpath) cyclists and occupiers of vehicles (on road)	<p>The viewpoint lies at approximately 121 m AOD and is located 0 m from the onshore cable corridor.</p> <p>This viewpoint location is on the cable corridor. The view is of a gently rolling, open valley. Betws Lodge Wood is on the high ground towards the left (west) of the photograph, with Moelfre Isaf in the right (southeast) of the view. The pylons carrying the 400 kV overhead lines are seen on the skyline. The farmland within the view is predominantly medium to large fields in the foreground with smaller more irregular-shaped fields in the middle-ground. In the foreground the hedgerows managed and devoid of trees, further from the viewpoint, the hedgerows are fuller, some with mature trees. Isolated farmsteads/properties are dotted around the farmland. The viewpoint is located on the edge of the Rhyd y Foel SLA, within LANDMAP Aspect Area CNWVS020 (mosaic rolling lowland) which forms the foreground, with CNWVS010 (hill and lower plateau grazing) in the middle ground (refer to Volume 7, Annex 6.2: Landscape and seascape character baseline technical report).</p>
27. View east from B5381 at Bryn-Tirion/Ffynnon Wen Appendix B, Representative Viewpoint B27	Cyclists and occupiers of vehicles	<p>The viewpoint lies at approximately 156 m AOD and is located 10 m from the onshore cable corridor.</p> <p>An open view from Roman Road/B5381 near Bryn Tirion, located within Conwy SLA 2 Rhyd Y Foel to Abergele, looking east along the Mona Onshore Development Area towards the Onshore Substation. The pylons carrying the 400 kV overhead lines are seen crossing the landscape. The view encompasses the rolling, wooded landscape of LANDMAP Visual and Sensory Aspect Area CNWVS020 Kinmel Manor environs, Mosaic Rolling Lowland, which lies within NLCA 9 Rhos Hills (refer to Volume 7, Annex 6.2: Landscape and seascape character baseline technical report).</p>

MONA OFFSHORE WIND PROJECT

Representative viewpoint reference	Location/receptor	Representative viewpoint description
28. View southeast from B5381 Glascoed Road, at Bryn-Tirion/Ffynnon Wen Appendix B, Representative Viewpoint B28	Cyclists and occupiers of vehicles	The viewpoint lies at approximately 99 m AOD and is located 60 m from the main section of the Mona Onshore Development Area. A partly restricted view from Roman Road/B5381 at Glascoed Road junction opposite Bodelwyddan Park entrance looking along the northern boundary of the Mona Onshore Development Area. The view encompasses the wooded landscape of LANDMAP Visual and Sensory Aspect Area DNBGHVS037 Limestone Valley-Cefn, which lies within NLCA 9 Rhos Hills (refer to Volume 7, Annex 6.2: Landscape and seascape character baseline technical report).
29. View northwest from junction of the B5381 at Glascoed Road Appendix B, Representative Viewpoint B29	Cyclists and occupiers of vehicles	The viewpoint lies at approximately 99 m AOD and is located 60 m from the main section of the Mona Onshore Development Area. A view from opposite Bodelwyddan Park entrance at Glascoed Road junction looking west towards the Mona Onshore Development Area and Onshore Substation. The view encompasses the wooded landscape of LANDMAP Visual and Sensory Aspect Area DNBGHVS037 Limestone Valley-Cefn, which lies within NLCA 9 Rhos Hills.
30. View west from southern end of public bridleway 208/3 adjacent to Coed Esgob Appendix B, Representative Viewpoint B30	People on foot, horse, bicycle	The viewpoint lies at approximately 52 m AOD and is located on the boundary of the Mona Onshore Development Area, 387 m from the Onshore Substation. This is a view west-southwest from the junction of the public bridleway and the private track to Tan y Bryn. The view is of mixed farmland, with scattered trees and a mix of boundary types. Coed Esgob lies to the west (right) of the viewpoint and the woodland on Cefn Meiriadog forms the backdrop to the view. Pylons carrying the 400 kV power lines cross the middle ground.

1.5.2.4 The photography was undertaken when Meteorological Office forecasts for visibility were very good or excellent. However, occasionally when the representative viewpoint location was reached, the atmospheric conditions were not as forecast. Table 1.3, records the time and atmospheric conditions. As all views are within 10 km of the Mona Offshore Development Area, the conditions have been deemed to be suitable for an accurate assessment of visual effects.

Table 1.3: Mona baseline photographic data at representative viewpoint locations

Representative viewpoint reference	Date and time	Atmospheric conditions
1. View southeast along farm track from minor road to Tyddyn Meredydd	Winter: 22/03/2023 at 12:34 Summer: 26/07/2022 at 16:21	Winter: Very good, 20.1 km to 40 km visibility Summer: Very good, 20.1 km to 40 km visibility
2. View north from minor road to the south of Isfryn	Winter: 22/03/2023 at 12:18 Summer: 25/09/2023 at 12:17	Winter: Very good, 20.1 km to 40 km visibility Summer: Good, 10.1 km to 20 km visibility

MONA OFFSHORE WIND PROJECT

Representative viewpoint reference	Date and time	Atmospheric conditions
3. View east-southeast from public footpath 105/6 to the southeast of PentreMawr	Winter: 17/03/2022 at 16:39 Summer: 09/08/2023 at 15:21	Winter: Very good, 20.1 km to 40 km visibility Summer: Very good, 20.1 km to 40 km visibility
4. View southeast from public footpath 105/7 to the southwest of Waen-Meredydd	Winter: 22/03/2023 at 13:06 Summer: 26/07/2022 at 16:39	Winter: Good, 10.1 km to 20 km visibility Summer: Very good 20.1 km to 40 km visibility
5. View southeast from junction of farm track with minor road at Waen-Meredydd	Winter: 22/03/2023 at 12:47 Summer: 25/09/2023 at 11:53	Winter: Good, 10.1 km to 20 km visibility Summer: Good, 10.1 km to 20 km visibility
6. View northwest from minor road at Ty'n-y-ffordd-fawr	Winter: 22/03/2023 at 11:10 Summer: 26/07/2022 at 14:31	Winter: Very good, 20.1 km to 40 km visibility Summer: Very good, 20.1 km to 40 km visibility
7. View southwest from public footpath 208/13 west of St. Asaph	Winter: 17/03/2022 at 15:25 Summer: 09/08/2023 at 14:37	Winter: Very good, 20.1 to 40 km visibility Summer:
8. View southeast from farm gate off Glascoed Road adjacent to Bryn-celyn	Winter: 22/03/2023 at 14:29 Summer: 26/07/2022 at 17:38	Winter: Good, 10.1 km to 20 km visibility Summer: Very good, 20.1 km to 40 km visibility
9. View south-southeast from public bridleway 201/9 east of Bodelwyddan Park	Winter: 22/03/2023 at 15:15 Summer: 27/07/2022 at 11:40	Winter: Good, 10.1 km to 20 km visibility Summer: Very good, 20.1 km to 40 km visibility
10. View south, from public footpath 206/27 and access track to Rhuddlan Castle, adjacent to Twthill	Winter: 23/03/2023 at 10:27 Summer: 21/06/2022 at 07:49	Winter: Good, 10.1 km to 20 km visibility Summer: Excellent, greater than 40 km visibility
11. View west-southwest from Offa's Dyke Path, to the south of Moel Maenefa	Winter: 22/03/2023 at 08:33 Summer: 27/07/2022 at 08:45	Winter: Good, 10.1 km to 20 km visibility Summer: Very good, 20.1 km to 40 km visibility
12. View west-southwest from Offa's Dyke Path to the south of Pen-y-Mynydd	Winter: 18/03/2022 at 12:45 Summer: 09/08/2023 at 09:46	Winter: Very good, 20.1 km to 40 km visibility Summer: Very good, 20.1 km to 40 km visibility
13. View southwest from Cwtir Lane, south of the junction with Heol Esgob	Winter: 11/12/2023 at 13:51 Summer: 27/07/2022 at 11:04	Winter: Very good, 20.1 km to 40 km visibility Summer: Very good, 20.1 km to 40 km visibility
14. View northwest from minor road close to junction with access track to Coed Kendrick / Wigfair Home Farm	Winter: 22/03/2023 at 11:24 Summer: 26/07/2022 at 14:45	Winter: Very good, 20.1 km to 40 km visibility Summer: Very good, 20.1 km to 40 km visibility
15. View south from the North Wales Path (footpath 26/30)/National Cycle Route 84, north of Rhuddlan, adjacent to River Clwyd	Winter: 23/03/2023 at 09:59 Summer: 10/08/2023 at 11:26	Winter: Good, 10.1 km to 20 km visibility Summer: Very good, 20.1 km to 40 km visibility
16. View south-southwest from public footpath 206/999 to the southwest of Pengwern College	Winter: 17/03/2022 at 13:08 Summer: 09/08/2023 at 11:10	Winter: Very good, 20.1 km to 40 km visibility Summer: Very good, 20.1 km to 40 km visibility
17. View west-southwest from public footpath 208/10, off the Upper Denbigh Road to the south of St. Asaph	Winter: 17/03/2022 at 14:56 Summer: 25/09/2023 at 11:21	Winter: Very good, 20.1 km to 40 km visibility Summer: Very good, 20.1 km to 40 km visibility

MONA OFFSHORE WIND PROJECT

Representative viewpoint reference	Date and time	Atmospheric conditions
18. View southwest from panoramic viewpoint at the trig point at Graig Fawr (CRoW Act Access Land) within the Clwydian Range and Dee Valley NL	Winter: 11/12/2023 at 11:59 Summer: 21/06/2022 at 09:53	Winter: Good, 10.1 to 20 km visibility Summer: Excellent, greater than 40 km visibility
19. View southwest from Offa's Dyke Path National Trail/public footpath 405/12 on Prestatyn hillside within the Clwydian Range and Dee Valley NL	Winter: 11/12/2023 at 11:01 Summer: 21/06/2022 at 09:03	Winter: Good, 10.1 to 20 km visibility Summer: Excellent, greater than 40 km visibility
20. View south-southeast from the Wales Coast Path, at Pont y Ddraig footbridge over the River Clwyd, Kinmel Bay, Rhyl	Winter: 11/12/2023 at 15:42 Summer: 10/08/2023 at 09:19	Winter: Very good, 20.1 to 40 km visibility Summer: Excellent, greater than 40 km visibility
21. View southwest from B5429, adjacent to Criccin Cross, southeast of Rhuddlan	Winter: 11/12/2023 at 12:39 Summer: 09/08/2023 at 10:30	Winter: Very good, 20.1 to 40 km visibility Summer: Very good, 20.1 km to 40 km visibility
22. View west from public footpath 210/6, north of Wern Ddu	Winter: 11/12/2023 at 13:07 Summer: 25/09/2023 at 10:28	Winter: Very good, 20.1 to 40 km visibility Summer: Very good, 20.1 km to 40 km visibility
23. View east from the Wales Coast Path to the east of Llanddulas Beach	Winter: 18/03/2022 at 11:30 Summer: 10/08/2023 at 10:34	Winter: Very good, 20.1 km to 40 km visibility Summer: Very good, 20.1 km to 40 km visibility
24. View west from the Wales Coast Path to the west of Abergele Beach	Winter: 18/03/2022 at 10:59 Summer: 10/08/2023 at 10:08	Winter: Very good, 20.1 km to 40 km visibility Summer: Very good, 20.1 km to 40 km visibility
25. View east from Moelfre Isaf summit on public footpath 19/26	Winter: 17/03/2022 at 17:18 Summer: 09/08/2023 at 16:33	Winter: Very good, 20.1 km to 40 km visibility Summer: Excellent, greater than 40 km visibility
26. View southeast from public footpath 16/14 at Tan y Gopa Road	Winter: 22/03/2023 at 16:50 Summer: 25/09/2023 at 14:39	Winter: Very good, 20.1 km to 40 km visibility Summer: Very good, 20.1 km to 40 km visibility
27. View east from B5381 at Bryn-Tirion/Ffynnon Wen	Winter: 22/03/2023 at 15:59 Summer: 14/09/2022 at 10:46	Winter: Very good, 20.1 km to 40 km visibility Summer: Good, 10.1 km to 20 km
28. View southeast from B5381 Glascoed Road at Bryn-Tirion/Ffynnon Wen	Winter: 22/03/2023 at 14:12 Summer: 25/09/2023 at 13:54	Winter: Good, 10.1 km to 20 km visibility Summer: Good, 10.1 km to 20 km visibility
29. View northwest from junction of the B5381 at Glascoed Road	Winter: 22/03/2023 at 14:12 Summer: 25/09/2023 at 13:54	Winter: Good, 10.1 km to 20 km visibility Summer: Good, 10.1 km to 20 km visibility
30. View east from southern end of public bridleway 208/3 adjacent to Coed Esgob	Winter: 11/12/2023 at 14:22 Autumn: 13/11/23 at 15:00	Winter: Very good, 20.1 to 40 km visibility Autumn: Very good, 20.1 to 40 km visibility

1.6 Summary

- 1.6.1.1 Following a desktop exercise and consultation process, representative viewpoint locations have been identified. This has enabled a broad range of typical sensitive visual receptors within the SLVIA onshore study area to be identified for consideration within the assessment process of the Environmental Statement. Site surveys have

MONA OFFSHORE WIND PROJECT

been undertaken and photography captured at these representative viewpoint locations.

1.7 References

- 1.7.1.1 Landscape Institute (2019) Technical Guidance Note (TGN) 06/19: Visual Representation of Development Proposals.

Appendix A: Plans

MONA OFFSHORE WIND PROJECT

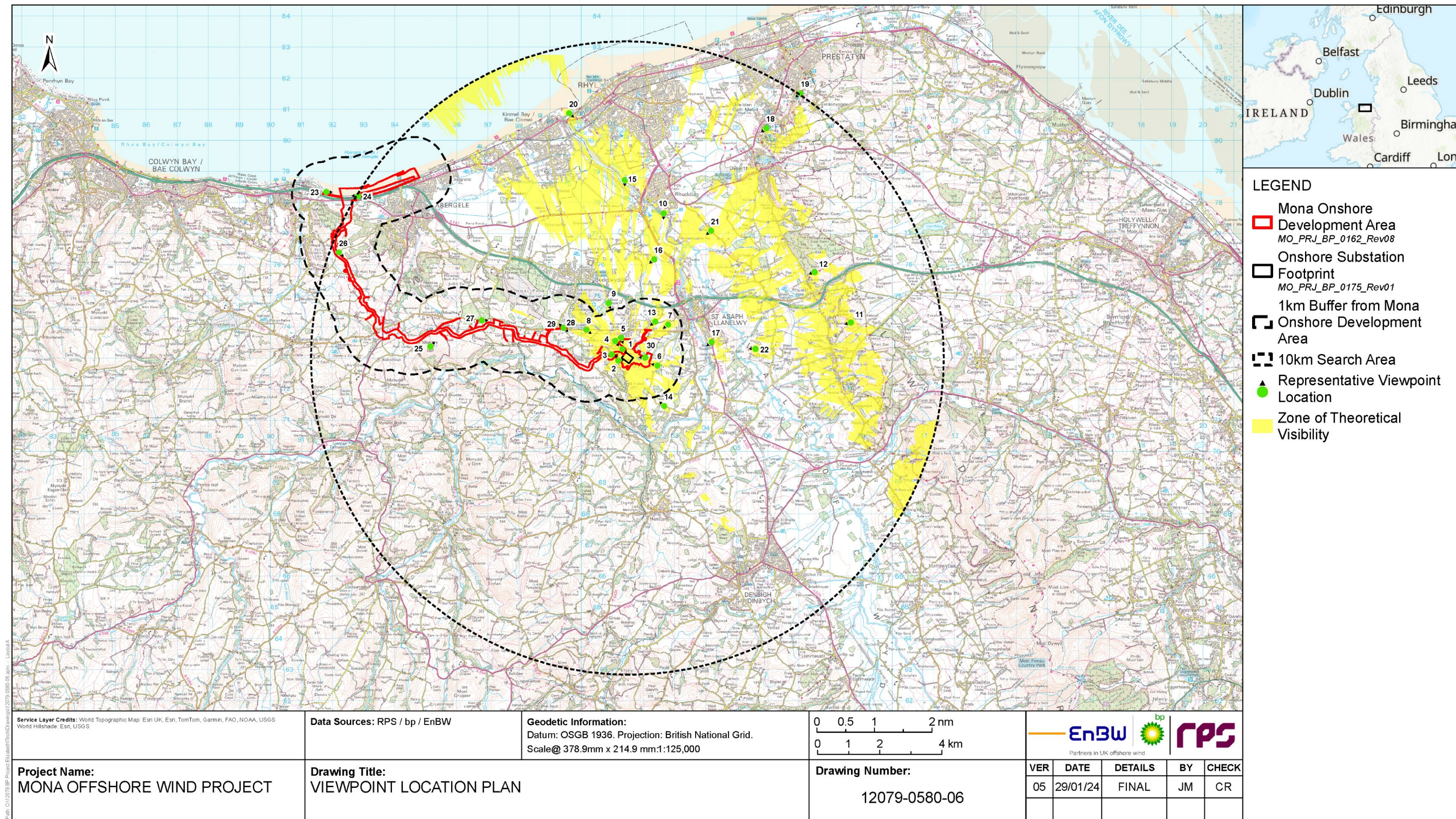


Figure A1: Viewpoint Location Plan

Appendix B: Representative Viewpoints



Winter (Date of photograph: 22/03/2023)



Summer (Date of photograph: 26/07/2022)

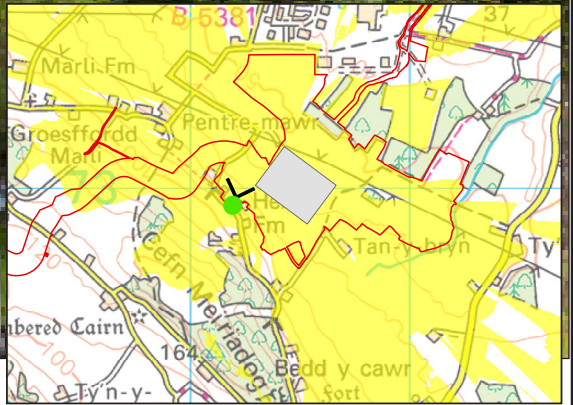
 < indicates the 90° field of view from the respective viewpoint



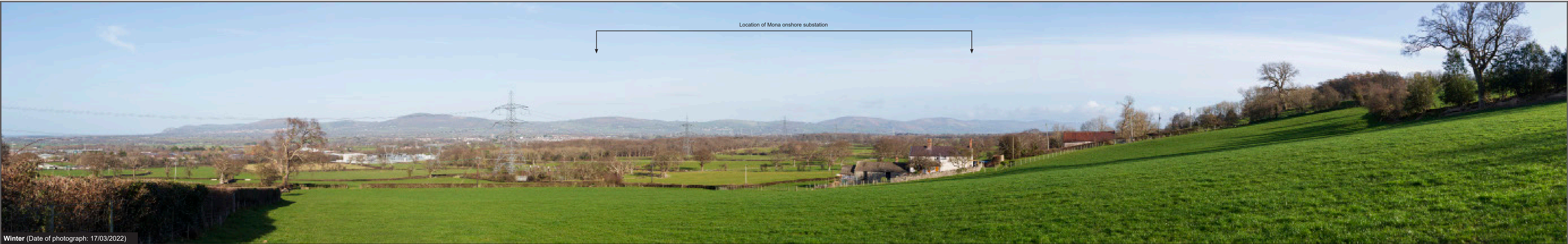
Winter (Date of photograph: 22/03/2023)



Summer (Date of photograph: 25/09/2023)



indicates the 90° field of view from the respective viewpoint



Winter (Date of photograph: 17/03/2022)

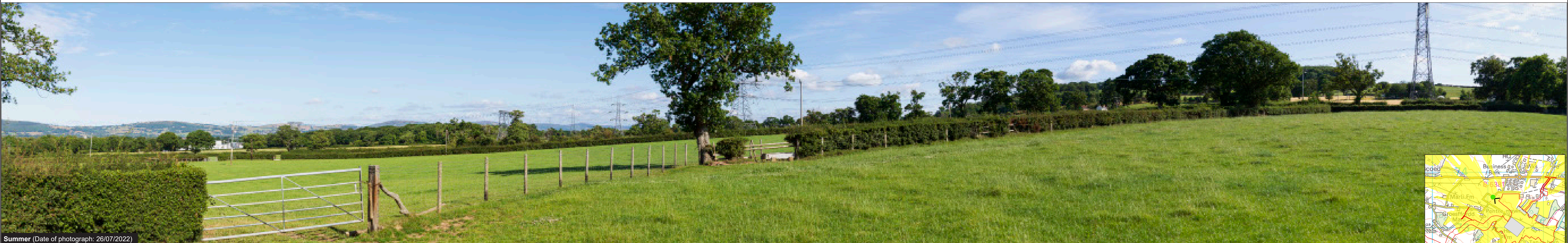


Summer (Date of photograph: 09/08/2023)

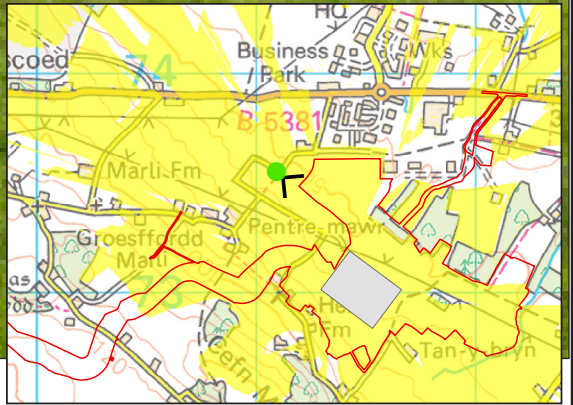
🟢 < indicates the 90° field of view from the respective viewpoint



Winter (Date of photograph: 22/03/2023)



Summer (Date of photograph: 26/07/2022)



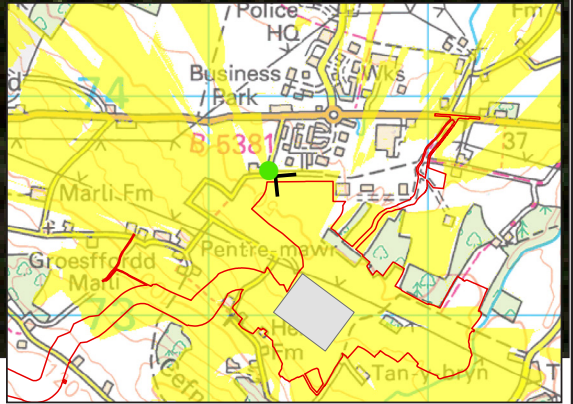
🟢 < indicates the 90° field of view from the respective viewpoint



Winter (Date of photograph: 22/03/2023)



Summer (Date of photograph: 25/09/2023)




< indicates the 90° field of view from the respective viewpoint

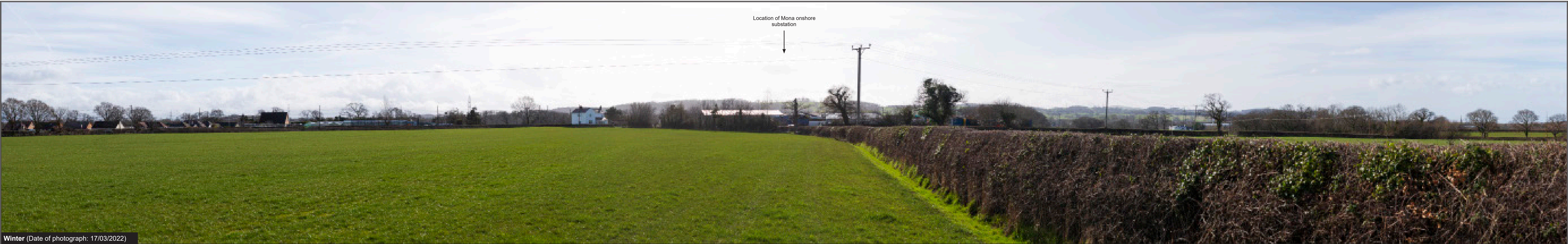


Winter (Date of photograph: 22/03/2023)



Summer (Date of photograph: 26/07/2022)

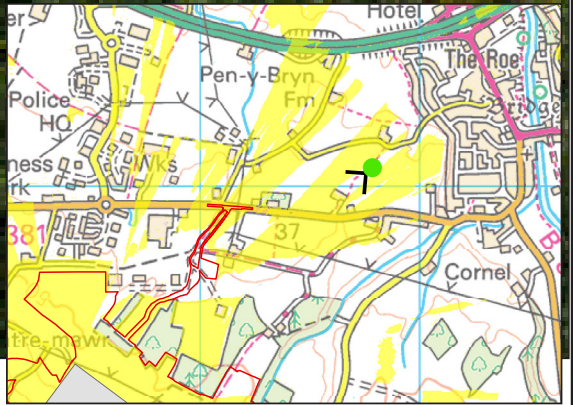
 < indicates the 90° field of view from the respective viewpoint



Winter (Date of photograph: 17/03/2022)



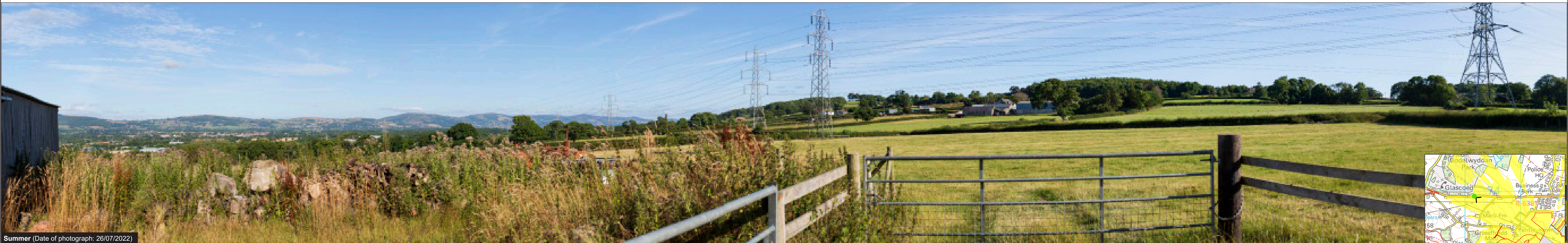
Summer (Date of photograph: 09/08/2023)



< indicates the 90° field of view from the respective viewpoint



Winter (Date of photograph: 22/03/2023)



Summer (Date of photograph: 26/07/2022)

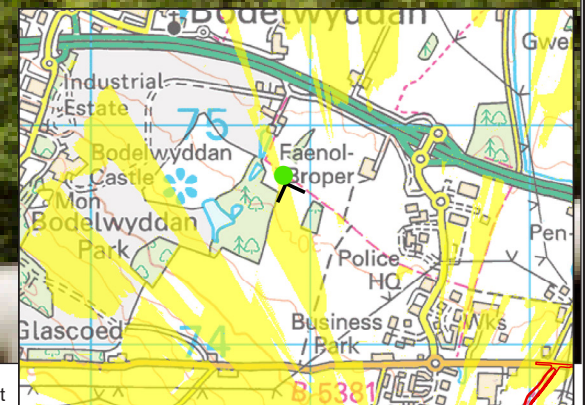
📍 indicates the 90° field of view from the respective viewpoint



Winter (Date of photograph: 22/03/2023)



Summer (Date of photograph: 27/07/2022)



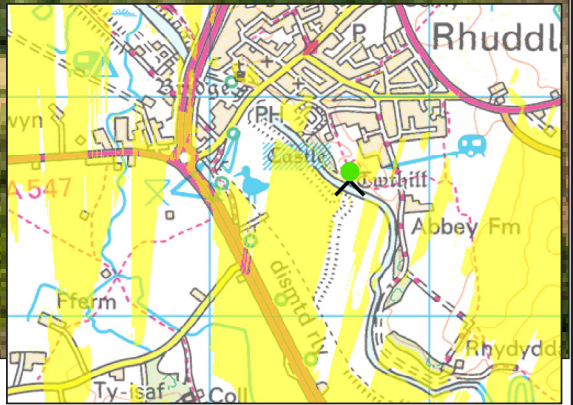
🌿 < indicates the 90° field of view from the respective viewpoint



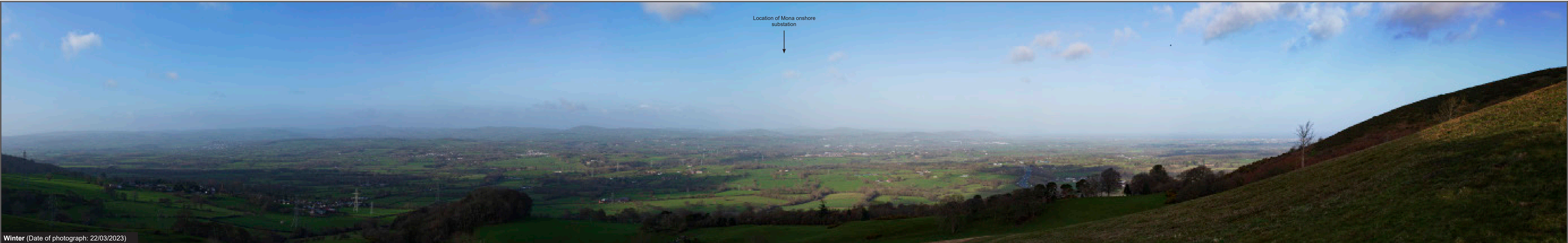
Winter (Date of photograph: 23/03/2023)



Summer (Date of photograph: 21/06/2022)



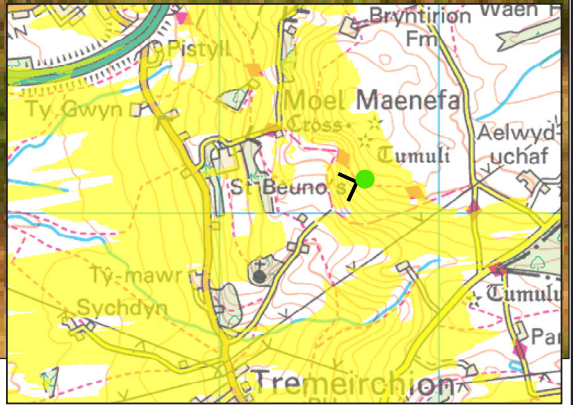
< indicates the 90° field of view from the respective viewpoint



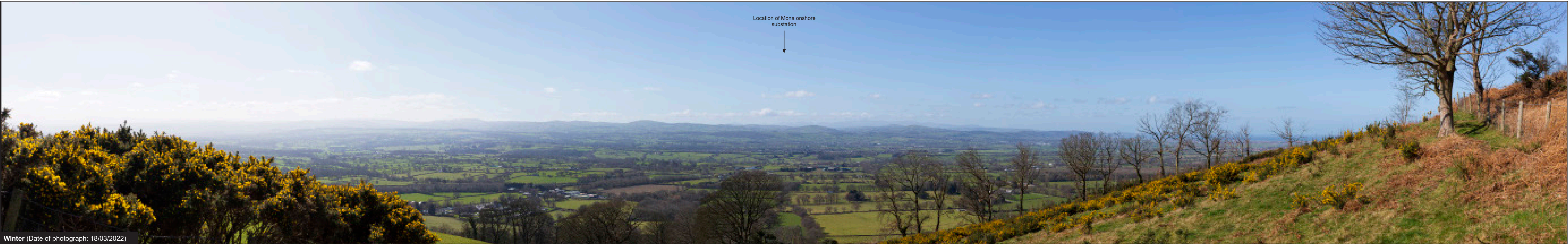
Winter (Date of photograph: 22/03/2023)



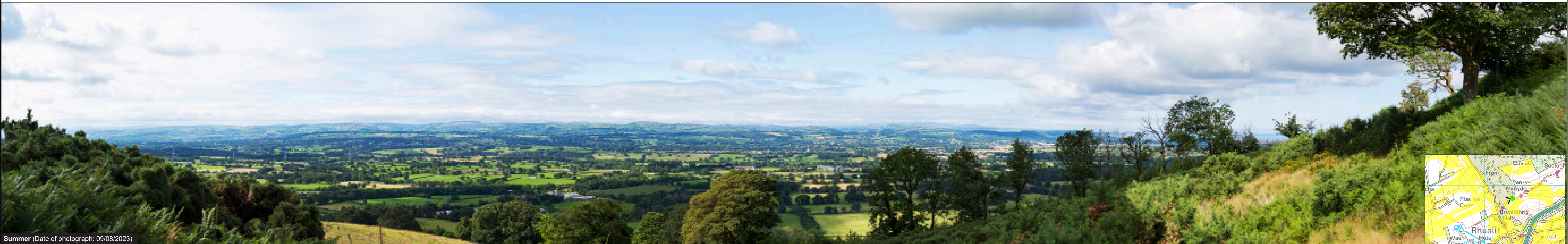
Summer (Date of photograph: 27/07/2022)



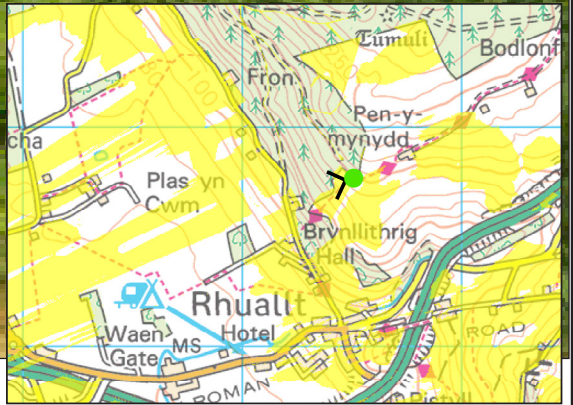
 indicates the 90° field of view from the respective viewpoint



Winter (Date of photograph: 18/03/2022)



Summer (Date of photograph: 09/08/2023)




< indicates the 90° field of view from the respective viewpoint

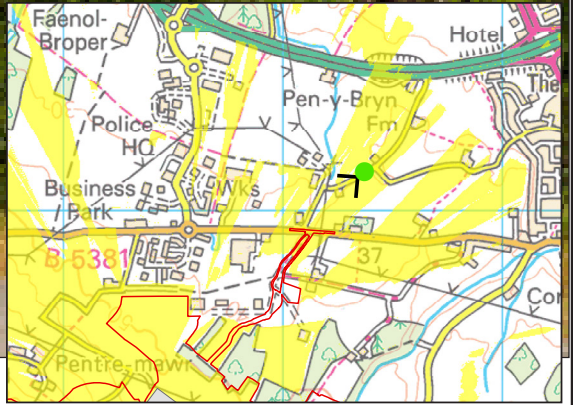


Winter (Date of photograph: 11/12/2023)



Summer (Date of photograph: 27/07/2022)

 < indicates the 90° field of view from the respective viewpoint





Winter (Date of photograph: 22/03/2023)



Summer (Date of photograph: 26/07/2022)

 < indicates the 90° field of view from the respective viewpoint



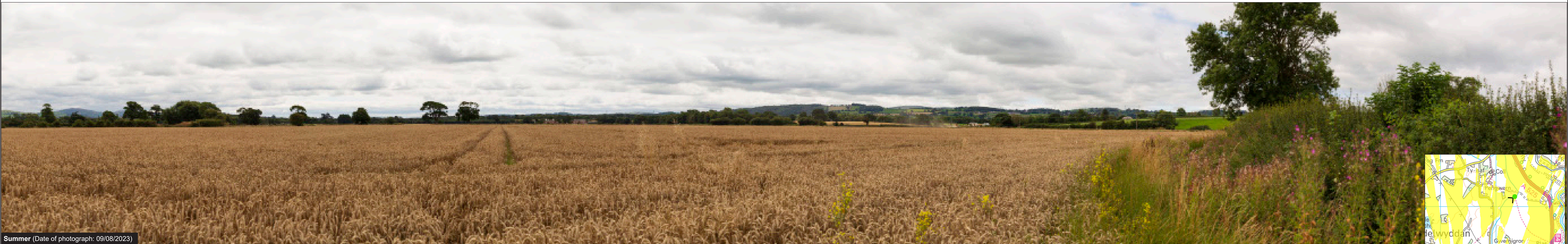
Winter (Date of photograph: 23/03/2023)



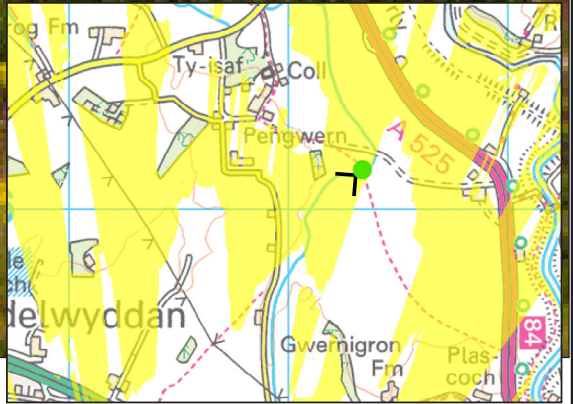
Summer (Date of photograph: 10/08/2023)



Winter (Date of photograph: 17/03/2022)



Summer (Date of photograph: 09/08/2023)



< indicates the 90° field of view from the respective viewpoint

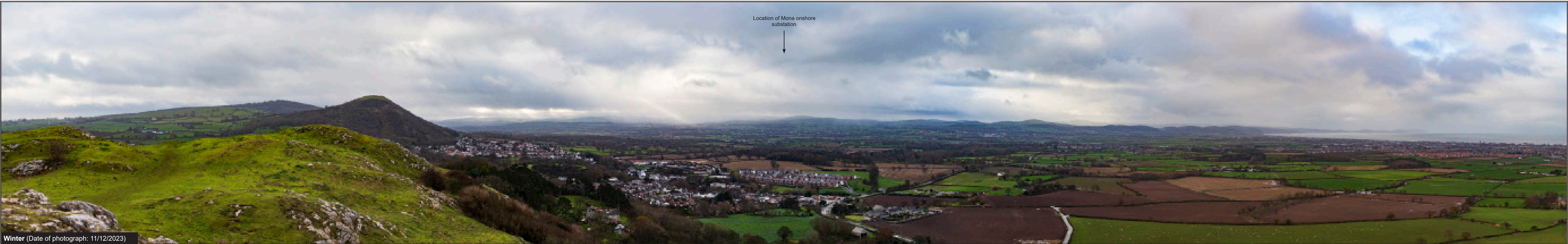


Winter (Date of photograph: 17/03/2022)



Summer (Date of photograph: 25/09/2023)

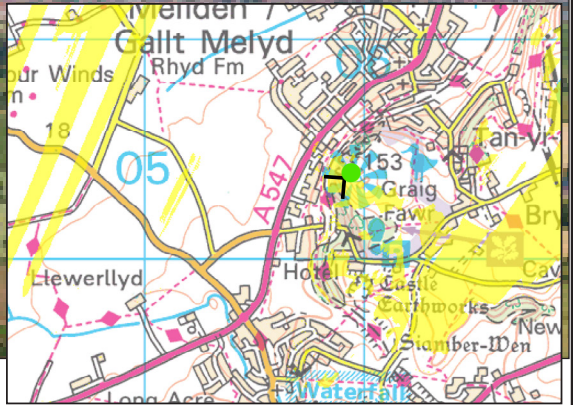
< indicates the 90° field of view from the respective viewpoint



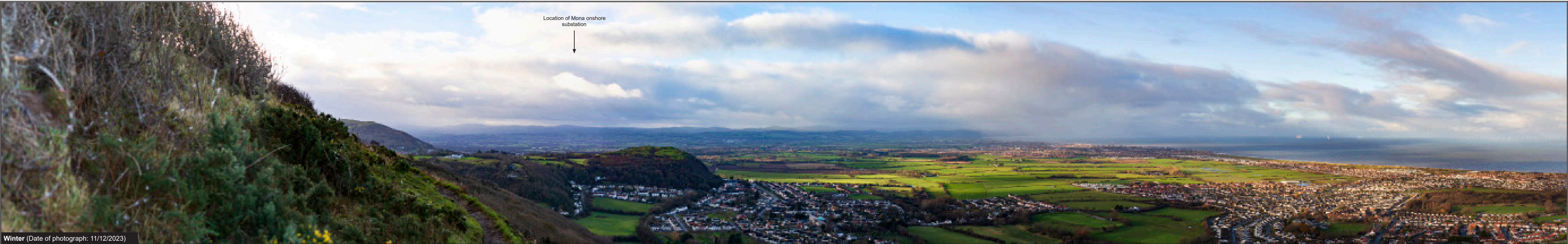
Winter (Date of photograph: 11/12/2023)



Summer (Date of photograph: 21/06/2022)



 < indicates the 90° field of view from the respective viewpoint



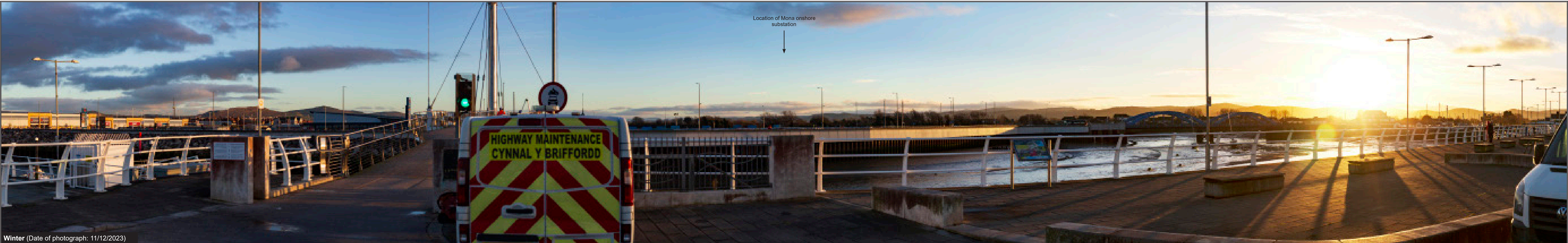
Winter (Date of photograph: 11/12/2023)



Summer (Date of photograph: 21/06/2022)



< indicates the 90° field of view from the respective viewpoint

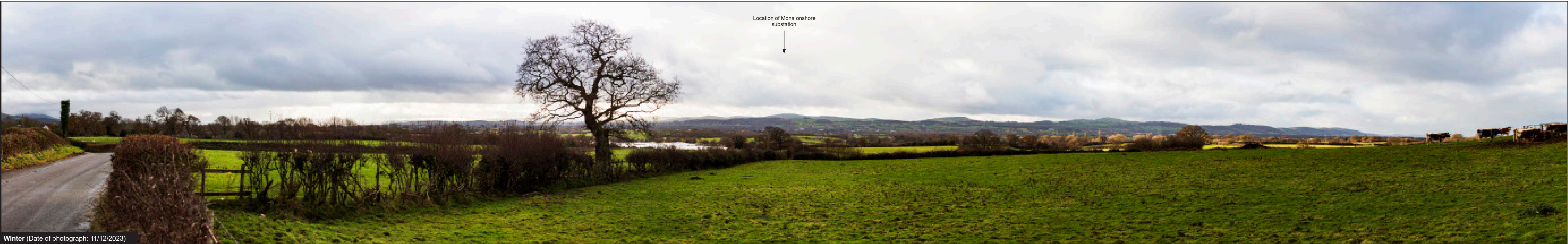


Winter (Date of photograph: 11/12/2023)



Summer (Date of photograph: 10/08/2023)


< indicates the 90° field of view from the respective viewpoint



Winter (Date of photograph: 11/12/2023)



Summer (Date of photograph: 09/08/2023)

 < indicates the 90° field of view from the respective viewpoint



Winter (Date of photograph: 11/12/2023)

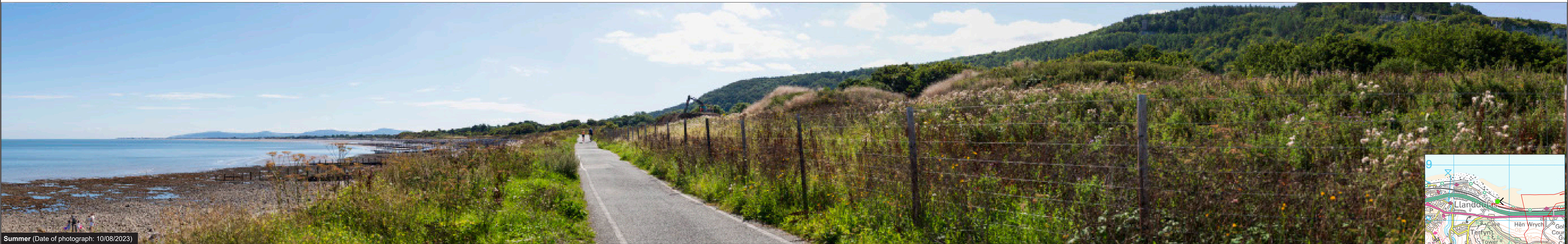


Summer (Date of photograph: 25/09/2023)

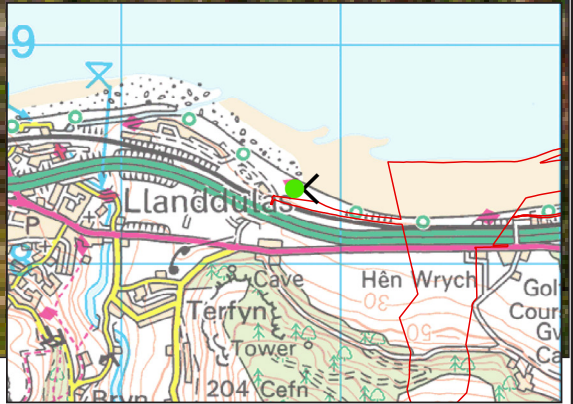
 < indicates the 90° field of view from the respective viewpoint



Winter (Date of photograph: 18/03/2022)



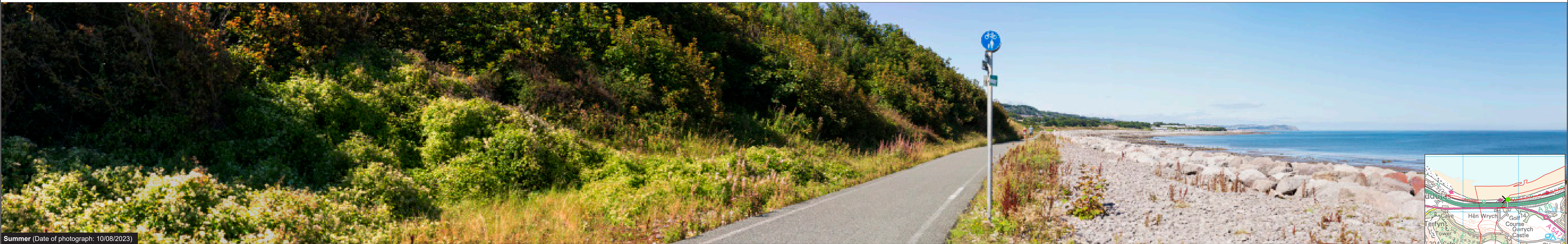
Summer (Date of photograph: 10/08/2023)



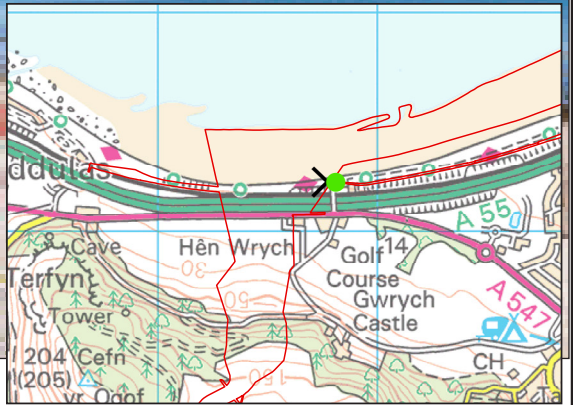
< indicates the 90° field of view from the respective viewpoint



Winter (Date of photograph: 18/03/2022)



Summer (Date of photograph: 10/08/2023)



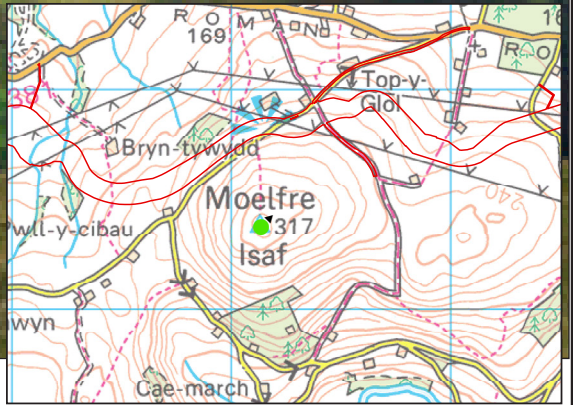
< indicates the 90° field of view from the respective viewpoint



Winter (Date of photograph: 17/03/2022)



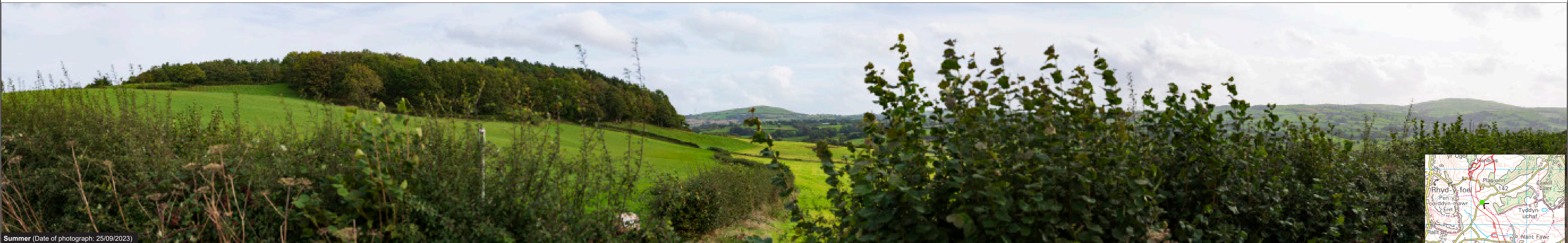
Summer (Date of photograph: 09/08/2023)



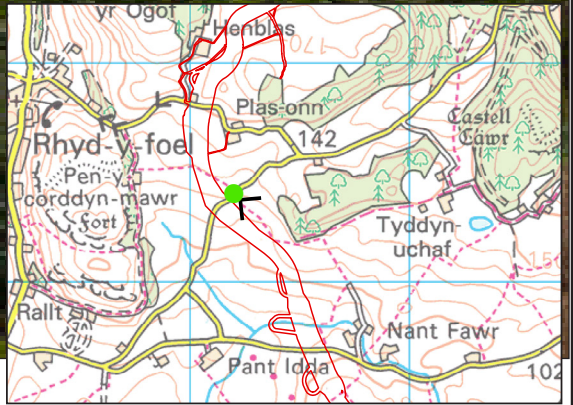
< indicates the 90° field of view from the respective viewpoint



Winter (Date of photograph: 22/03/2023)



Summer (Date of photograph: 25/09/2023)



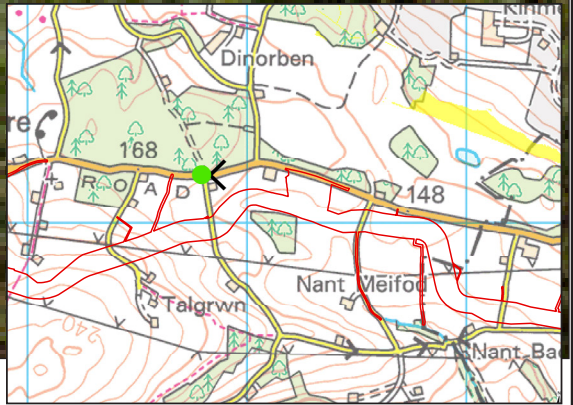
< indicates the 90° field of view from the respective viewpoint



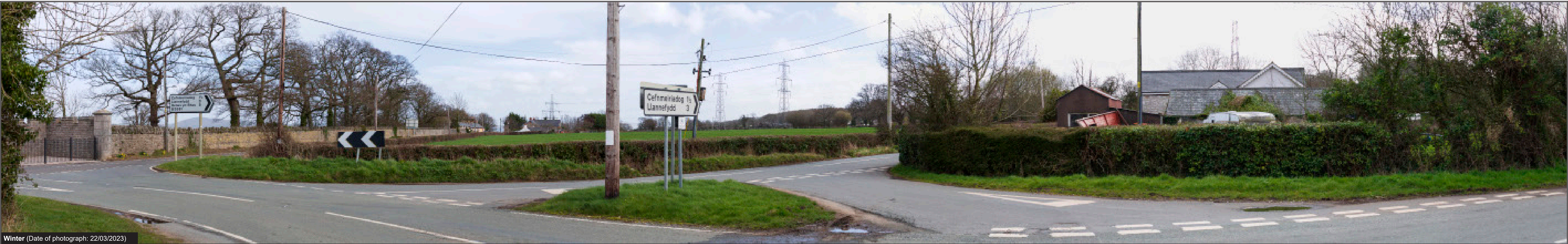
Winter (Date of photograph: 22/03/2023)



Summer (Date of photograph: 14/09/2022)



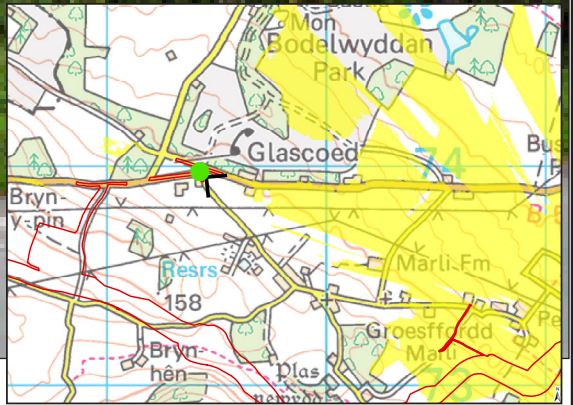
indicates the 90° field of view from the respective viewpoint



Winter (Date of photograph: 22/03/2023)



Summer (Date of photograph: 25/09/2023)



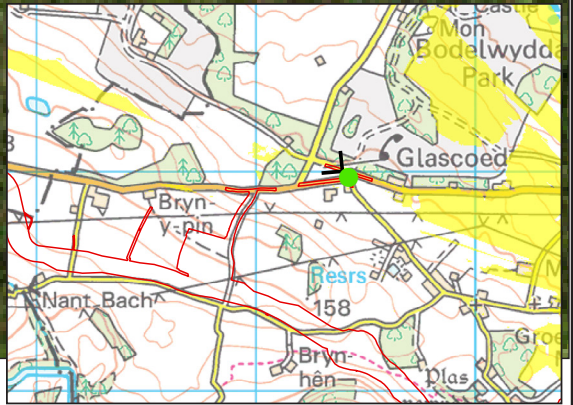
< indicates the 90° field of view from the respective viewpoint



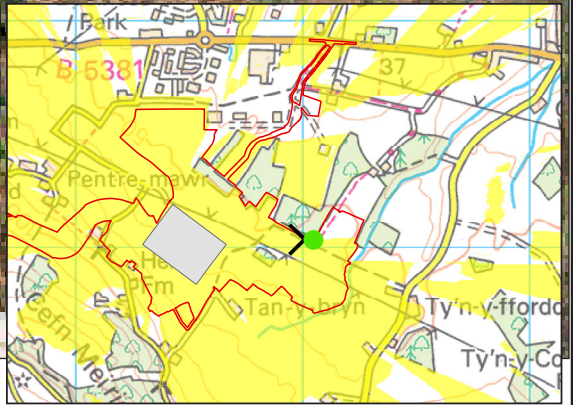
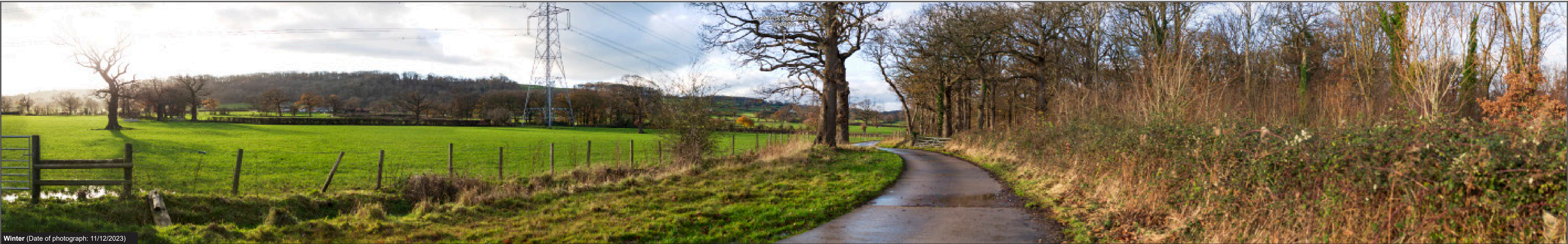
Winter (Date of photograph: 22/03/2023)



Summer (Date of photograph: 25/09/2023)



< indicates the 90° field of view from the respective viewpoint



Green dot indicates the 90° field of view from the respective viewpoint