



# **Colwyn Bay Waterfront Project Phase 2b Environmental Statement**

Volume 2: Technical Appendices  
Technical Appendix 4 - Scheme Construction

September 2021

Mott MacDonald  
Mott MacDonald House  
5 Woodland Road West  
Colwyn Bay LL29 7DH  
United Kingdom

T +44 (0)1492 534601  
mottmac.com

Environment Roads &  
Facilities  
Conwy County Borough  
Council  
Mochdre Council Offices

# **Colwyn Bay Waterfront Project Phase 2b Environmental Statement**

Volume 2: Technical Appendices  
Technical Appendix 4 - Scheme Construction

September 2021

# Issue and Revision Record

Revision	Date	Originator	Checker	Approver	Description
P01	September 2021	A.J	N.S	N.H	First Issue

**Document reference:** 100374-MMD-00-XX-RP-N-0026

## Information class: Standard

This document is issued for the party which commissioned it and for specific purposes connected with the above-captioned project only. It should not be relied upon by any other party or used for any other purpose.

We accept no responsibility for the consequences of this document being relied upon by any other party, or being used for any other purpose, or containing any error or omission which is due to an error or omission in data supplied to us by other parties.

This document contains confidential information and proprietary intellectual property. It should not be shown to other parties without consent from us and from the party which commissioned it.

# Contents

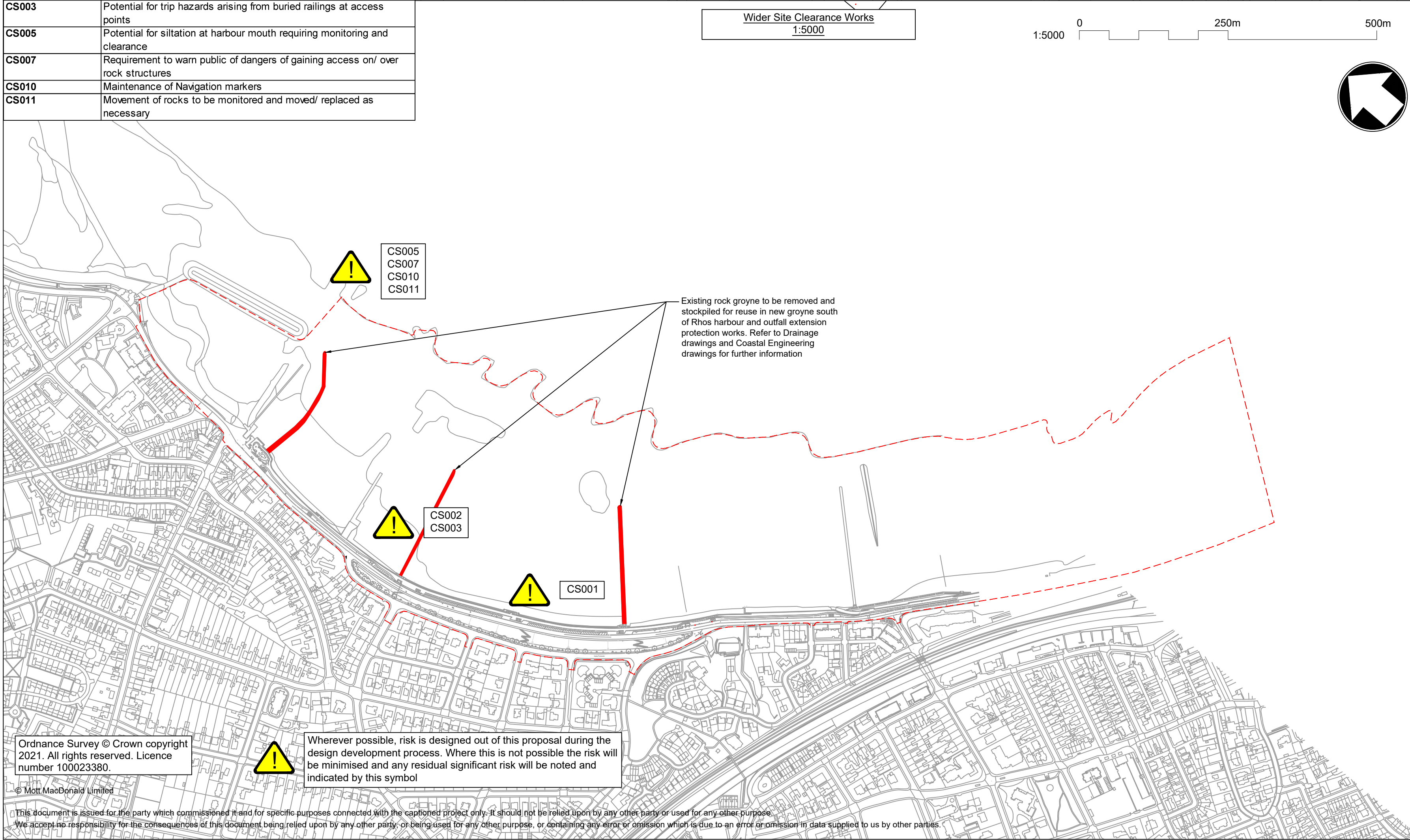
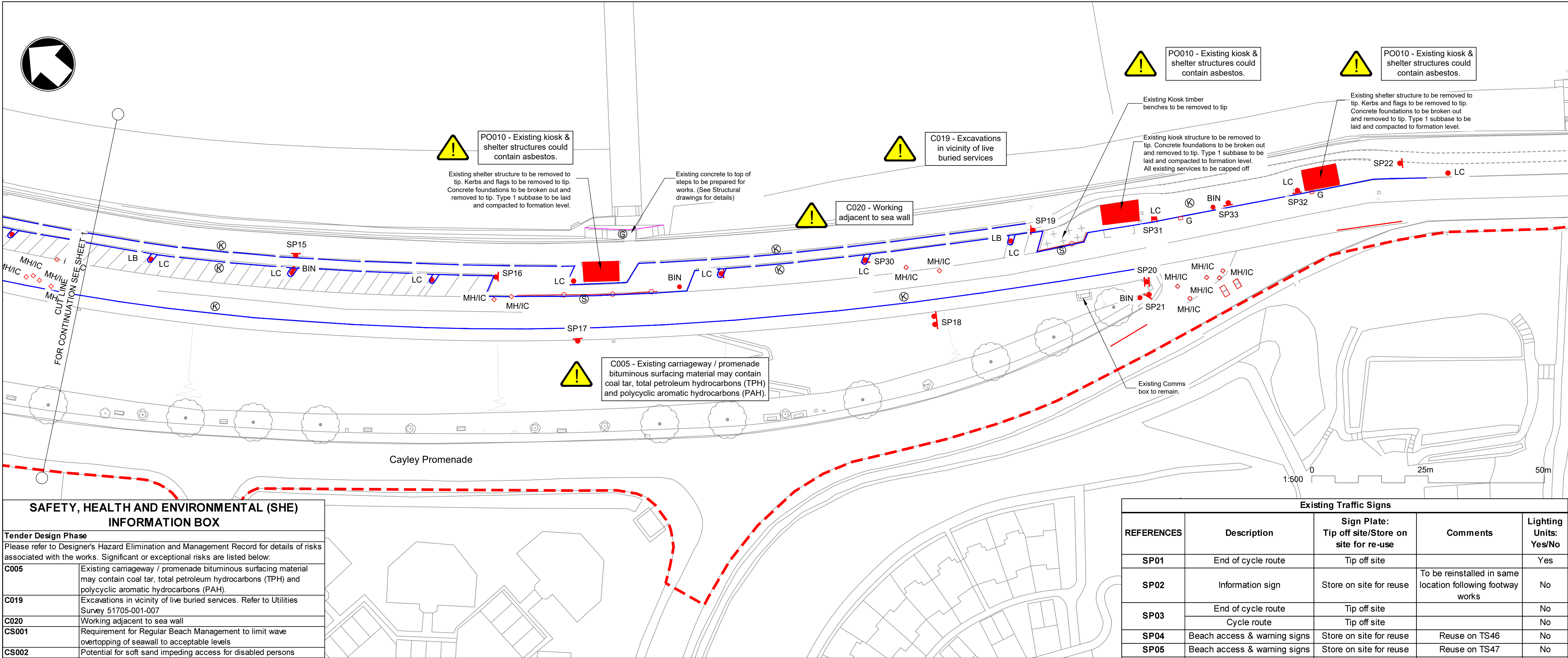
## Appendix 4.1 – Site Clearance Drawings

## **Appendix 4.1 – Site Clearance Drawings**










- Notes
1. This drawing is to be read in conjunction with all related Mott MacDonald, BCA and CCBC specifications and drawings.
  2. Do not scale any items or information from this drawing.
  3. All dimensions are shown in millimetres unless otherwise stated.
  4. All levels are in metres above Ordnance Datum (AOD).
  5. The topographical survey was supplied to us by Survey Operations Ltd in April 2008. We accept no responsibility for errors or omissions in data supplied to us by other third parties.
  6. The Contractor shall ensure that all utilities are adequately protected as a result of the excavation works.
  7. See coastal discipline drawings for details of coastal works
  8. See promenade structures drawings for promenade slabs details.
  9. Extent and phasing of site clearance to be agreed with the project manager.
  10. Removal or cutting back of vegetation to be agreed with the project manager.
  11. Existing inspection chambers and manholes to be raised/tied into proposed works as per statutory undertakers' standards.
  12. See existing lighting asset records in Pre-Construction Information for existing lighting column connections (DNO/private).
  13. Refer to Section 2 of the Specification for Highways Works for Site Clearance details.
  14. Illuminated signs for removal are to have their electrical supply pot ended.
  15. Refer to existing sign schedule on 100374-MMD-03-XX-DR-C-0202 for treatment of sign plates
  16. Contractor to arrange disconnection of kiosk and shelter services prior to commencing demolition works.
  17. All lifebuoys to be stored on site for reuse

- Key to symbols
- Site extents.
  - Road markings to be burned off (outside resurfacing extents)
  - Kerb / edging stones to be removed and disposed off site.
  - Ⓚ Fence - Guardrail to be removed and disposed off site. Contractor to ensure safe edge protection during works.
  - Ⓢ Short guardrail (Visirail) to be removed and disposed off site.
  - ⓁⓈ Lighting column to be removed and disposed off site. Refer to existing sign schedule on 100374-MMD-03-XX-DR-C-0202 for sign plate treatment
  - ⓁⓈ Sign post to be removed and disposed of off site. Refer to existing sign schedule on 100374-MMD-03-XX-DR-C-0202 for sign plate treatment
  - ⓂⓂ / ⓂⓂ Manhole / Inspection chamber (see note 11).
  - ⓂⓂ Bin to be removed and delivered and offloaded to CCBC Llanellan Nurseries.
  - ⓂⓂ Bollard to be removed and disposed off site.
  - ⓂⓂ Lifebuoy to be retained on site for reuse.
  - ⓂⓂ Gully grating and frame to be taken up and disposed of off site. Pot to be backfilled with Class ST2 concrete.

SAFETY, HEALTH AND ENVIRONMENTAL (SHE) INFORMATION BOX	
Tender Design Phase	
Please refer to Designer's Hazard Elimination and Management Record for details of risks associated with the works. Significant or exceptional risks are listed below:	
C005	Existing carriageway / promenade bituminous surfacing material may contain coal tar, total petroleum hydrocarbons (TPH) and polycyclic aromatic hydrocarbons (PAH).
C019	Excavations in vicinity of live buried services. Refer to Utilities Survey 51705-001-007
C020	Working adjacent to sea wall
CS001	Requirement for Regular Beach Management to limit wave overtopping of seawall to acceptable levels
CS002	Potential for soft sand impeding access for disabled persons
CS003	Potential for trip hazards arising from buried railings at access points
CS005	Potential for siltation at harbour mouth requiring monitoring and clearance
CS007	Requirement to warn public of dangers of gaining access on/ over rock structures
CS010	Maintenance of Navigation markers
CS011	Movement of rocks to be monitored and moved/ replaced as necessary

Existing Traffic Signs				
REFERENCES	Description	Sign Plate: Tip off site/Store on site for re-use	Comments	Lighting Units: Yes/No
SP01	End of cycle route	Tip off site		Yes
SP02	Information sign	Store on site for reuse	To be reinstalled in same location following footway works	No
SP03	End of cycle route	Tip off site		No
SP04	Cycle route	Tip off site		No
SP05	Beach access & warning signs	Store on site for reuse	Reuse on TS46	No
SP06	Beach access & warning signs	Store on site for reuse	Reuse on TS47	No
SP07	Coastal access & Information sign	Store on site for reuse	Reuse on TS48	No
SP08	Coastal access & Information sign	Store on site for reuse	Reuse on TS49	No
SP09	Caravan & motor caravan parking restrictions	Store on site for reuse	Reuse on TS50	No
SP10	Tourist information flag sign	Store on site for reuse		No
SP11	7.5t weight restriction with supplementary plate	Store on site for reuse	Reuse on TS01	Yes
SP12	End of weight restriction	Store on site for reuse		No
SP13	Pedestrians ahead	Tip off site		No
SP14	Caravan & motor caravan parking restrictions	Store on site for reuse		No
SP15	Information sign	Store on site for reuse	To be reinstalled in same location following footway works	No
SP16	Pedestrians ahead	Tip off site		No
SP17	Caravan & motor caravan parking restrictions	Store on site for reuse		No
SP18	Croeso I Llandrillo-yn-Rhos/ Welcome to Rhos-on-Sea	Store on site for reuse	Reuse on TS45	No
SP19	Pedestrians ahead	Tip off site		No
SP20	7.5t weight restriction with supplementary plate	Store on site for reuse	Reuse on TS02	Yes
SP21	End of weight restriction	Store on site for reuse		Yes
SP22	Give Way	Tip off site		Yes
SP23	Pedestrians ahead	Tip off site		No
SP24	Coastal access & Information sign	Store on site for reuse	Reuse on TS51	No
SP25	Caravan & motor caravan parking restrictions	Store on site for reuse	Reuse on TS44	No
SP26	Caravan & motor caravan parking restrictions	Store on site for reuse		No
SP27	7.5t weight restriction with supplementary plate	Tip off site		No
SP28	End of weight restriction	Tip off site		No
SP29	Caravan & motor caravan parking restrictions	Store on site for reuse		No
SP30	Pedestrians ahead	Tip off site		No
SP31	Pedestrians ahead	Tip off site		No
SP32	Caravan & motor caravan parking restrictions	Store on site for reuse		No
SP33	Caravan & motor caravan parking restrictions	Store on site for reuse	Reuse on TS43	No
SP34	Street nameplate	Store on site for reuse	Reuse on TS44	No

Reference drawings					
100374-MMD-03-XX-DR-C-0101/2 - General Arrangement	100374-MMD-03-XX-DR-E-1401 to 1413 Street Lighting Drawings				
100374-MMD-03-XX-DR-C-0110 - Standard Details	100374-MMD-03-XX-DR-E-1401 to 1413 Structural Drawings				
100374-MMD-03-XX-DR-C-0301/2 - Fencing & Gates	100374-MMD-03-XX-DR-S-1700 to 1710				
100374-MMD-03-XX-DR-C-0601/2 - Earthworks	Refer also to BCA Landscaping design drawings				
100374-MMD-03-XX-DR-C-0701/2 - Road Pavement	100374-BCA-03-XX-DR-L-0100				
100374-MMD-03-XX-DR-C-1101/2 - Kerbs, Footways & Paved Areas	100374-MMD-03-XX-DR-C-1201/2/3 - Traffic Signs & Road Markings				
100374-MMD-01-XX-DR-D-0510 & 0511					
P01	21/07/21	NB	Issued for Comment	MB	NH
P02	27/08/21	NB	Revised following CCBC comments	AB	---
P03	02/09/21	JF	Updated following CCBC comments	AB	NH
Rev	Date	Drawn	Description	Ch'k'd	App'd

Client					
<div></div>					
Title					
Colwyn Bay Waterfront Phase 2b Site Clearance					
Sheet 2 of 2					
Designed	N.Bergeson	NB	Eng check	A.BARROWMAN	AB
Drawn	J.FINNIGAN	JF	Coordination	A.BARROWMAN	AB
Dwg check	J.FINNIGAN	JF	Approved	N.HAINES	NH
MMD Project Number		Scale at A1		Security	
100374		1:500		STD	
Suitability Description				Suit. Code	
Suitable for Tender				D2	
Drawing Number				Revision	
100374-MMD-03-XX-DR-C-0202				P03	



