

Compliance Assessment Report CAR_NRW0044118

Permit being assessed: BN0072901
 For: CWMDUAD STW, held by DWR CYMRU CYFYNGEDIG
 At: CWMDUAD STW, UNKNOWN, UNKNOWN, UNKNOWN, UNKNOWN.

Type of assessment carried out: Site Inspection, Reason: Routine.
 On 26/03/2024, between 11:20 and 11:40.
 Parts of permit assessed: All

NRW Lead Officer: Gavin Thomas, accompanied by: Joseph Callard.
Report sent to: CARS Mailbox, CARS mailbox, on 25/04/2024.

1. Summary of our findings (full details in section 4)

Part of permitted activity assessed (criteria)	Assessment result	Permit condition
WQ-A1 - Water Quality - Management - General management	Assessed (A)	
WQ-B1 - Water Quality - Operations - Permitted activities	Assessed (A)	
WQ-B2 - Water Quality - Operations - The site	Assessed (A)	
WQ-C1 - Water Quality - Emissions and monitoring - Emissions to water	Assessed (A)	

Result types are explained in more detail in the 'Important Information' section below.

2. What action is required?

No action required.

3. What will happen next?

Any non-compliance we have identified and recorded on this form is an offence. It can result in criminal prosecution and/or suspension or revocation of your permit.

At this time, we do not intend to take any further action.

This statement does not stop us from taking additional enforcement action if further relevant information comes to light or offences continue.

4. Details of our assessment

This was a pre-planned audit carried out by Natural Resources Wales environment officers who were accompanied by a senior operative, pollution technician and performance manager from Dwr Cymru.

The weather was dry with rain experienced in the days leading up to the visit.

General Observations

Officers were taken through the works from the inlet, through the treatment system, before finishing at the final effluent discharge point into the Afon Duad.

The site is a Wastewater Treatment works that processes residential waste and has telemetry in place for monitoring storm overflows. The permit for the site is for the discharge of secondary treated sewage effluent.

The Process

There is a storm overflow present at the inlet, this discharge is covered by a separate permit called SPS at Cwmdud STW (NPSWQD009506) and this will be covered by a separate CAR form. There is no screen in operation at the inlet. There is no flow meter on the site. The treatment is undertaken by a rotating biological contactor treatment plant. The flows enter from the side of the plant, the solids sink before the sewage then flows through the rotating disk then into the final tank. The sludge is emptied quarterly with the full system cleaned annually in the summer when low flows can be tankered away.

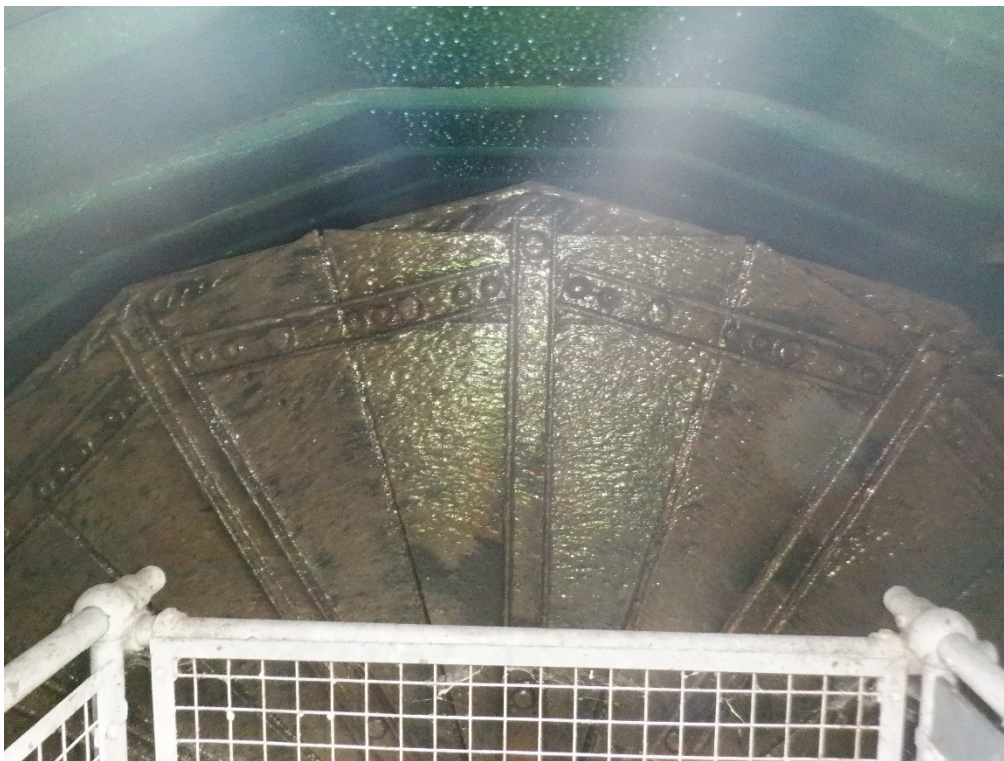


Figure 1: Rotating biological contactor, even coverage of growth, no dry spots



Figure 2: Final settlement tank with lots of solids present on the surface, the rising sludge is skimmed quarterly.



Figure 3 Storm tank with screen

There is a storm overflow at the inlet that discharges to the storm tank. There was plenty of storage capacity in the tank at the time of the visit. There is a screen on the outlet from the storm tank, the screen is open on the top and is manually cleaned by operatives with a telescopic brush. The screen is prone to becoming clogged and allowing solids and rags to flow out of the tank in times of high flows.



-

Figure 5: Discharge point for the works

The final effluent and storm discharge combine in a chamber before discharging from a flap valve on the bank of the Afon Duad. There was evidence of fungal growth on the concrete pad below the outfall with rag and sanitary products present. This will be covered in the CAR for the storm discharge.

If you have any queries about this report, or to discuss completion of any actions, please contact the NRW Officer named above.

Important information

Legal status of this report

Your permit is issued to you under the Environmental Permitting Regulations. You have a responsibility to comply with the conditions of your permit and prevent pollution/harm to the environment. You must also ensure that you comply with any other relevant legislation that may apply to your site's operations.

This report explains the findings of our assessment and any action you are required to take. We categorise non-compliance using our guidance for assessing non-compliance at regulated sites.

When we find potential non-compliance/s we will normally give you advice on how to maintain compliance.

To correct non-compliance, we may:

- require you to take specific actions
- issue a notice
- review the conditions of your permit.

Any advice and guidance we give will be without prejudice to any other enforcement response that we consider may be required.

Assessment results and non-compliance categories (used in section 1):

Assessment result	Description
Assessed (A)	Assessed or assessed in part, no evidence of non-compliance found
Action only (X)	Action only relating to the activity assessment
Ongoing (O)	Ongoing non-compliance, not scored

Non-compliance category	Description
C1 Major	Potential to have a major, serious, persistent and/or extensive impact or effect on the environment, people and/or property
C2 Significant	Potential to have a significant impact or effect on the environment, people and/or property
C3 Minor	Potential to have a minor or minimal impact or effect on the environment, people and/or property
C4 No environmental impact	Non-compliance at a regulated site that cannot foreseeably have any impact on the environment, people and/or property

If your assessment result in Section 1 is suspended, what does this mean?

In line with our guidance, we may suspend non-compliance for up to six months to allow time for remedial action to be taken. These will be re-instated if the action is not completed.

Full list of water quality action criteria (used in section 1 and 2):**WQ A: Management**

- WQ-A1 General management

WQ B: Operations

- WQ-B1 Permitted activities
- WQ-B2 The site
- WQ-B3 Operating techniques
- WQ-B4 Improvement programme
- WQ-B5 Pre-operational conditions

WQ C: Emissions and monitoring

- WQ-C1 Emissions to water
- WQ-C2 Emissions to land
- WQ-C3 Emissions of substances not controlled by emission limits
- WQ-C4 Installation of monitoring boreholes

WQ D: Information

- WQ-D1 Records
- WQ-D2 Reporting
- WQ-D3 Notifications

Enforcement response

Any permit condition non-compliance is an offence and we may take legal action against you. Action we take can include prosecution, serving a notice on you and/or suspension or revocation of your permit. See our Enforcement and Sanctions Guidance for further information.

Data protection notice

You should make sure that anyone named in this report knows that the information it contains will be processed by Natural Resources Wales to fulfil its regulatory and monitoring functions and to maintain the relevant public register(s).

We may also use and/or disclose the report in connection with:

- offering or providing you with our literature or services relating to environmental matters
- consulting with the public, public bodies and other organisations (e.g. Health and Safety Executive, local authorities) on environmental issues
- carrying out statistical analysis, research and development on environmental issues
- providing public register information to enquirers
- investigating possible breaches of environmental law
- assessing customer service satisfaction and improving our service
- Freedom of Information Act or Environmental Information Regulations requests.

We may also pass it on to our agents or representatives to do these things on our behalf.

Disclosure of information – this report will be available to view on-line

If you think this report contains commercially confidential information that should not be placed on our public register, you must contact your local Natural Resources Wales office within **fifteen working days** of receiving this report, using the contact details in the accompanying email or letter. You must give a full explanation of why it should not be

added to our public register, including specifying which information is commercially confidential. We will assess your request and respond to you within 20 working days to let you know if we agree to your request.

What do I do if I disagree with the report or have a complaint?

If you disagree with this compliance assessment report, you should contact the lead officer without delay to discuss your concerns.

If you are unable to resolve the issue with the lead officer or their line manager you should contact our Customer Contact team on 0300 065 3000 (Monday to Friday 08:00 – 18:00), or email enquiries@naturalresourceswales.gov.uk for details of how to raise your dispute further through our Complaints and Commendations procedure.

If you are dissatisfied with our response, you can contact the Public Services Ombudsman for Wales by phone on 0300 7900203 or by email at ask@ombudsman.wales

Welsh Language Standards

We are committed to establishing Natural Resources Wales as a naturally bilingual organisation. We will provide compliance reports in your preferred language.