



PORTS

‘ ST DAVID ’

DAMEN STAN TUG® 1906

**GENERAL**

YARD NUMBER 503314  
 DELIVERY DATE June 2006  
 BASIC FUNCTIONS Towing, mooring and pushing  
 CLASSIFICATION Bureau Veritas  
 NATIONAL AUTHORITIES HULL • MACH Coastal Area  
 MCA workboat code category 2  
 60 miles from safe haven  
 FLAG U.K.  
 OWNER Stena Line Ports Limited - Holyhead  
 BASE PORT Holyhead , Anglesey

**DIMENSIONS**

LENGTH O.A. 19.70 m  
 BEAM O.A. 6.38 m  
 DEPTH AT SIDES 2.70 m  
 DRAUGHT AFT 2.65 m  
 DISPLACEMENT 138 ton

**TANK CAPACITIES**

FUEL OIL 24.3 m<sup>3</sup>  
 FRESH WATER 2.3 m<sup>3</sup>  
 WATER BALLAST 1.7 m<sup>3</sup>  
 SEWAGE 0.7 m<sup>3</sup>  
 SLUDGE 0.5 m<sup>3</sup>

**PERFORMANCES (TRIALS)**

MAX. BOLLARD PULL AHEAD 22.4 ton(m)  
 SPEED 11.7 knots

**PROPULSION SYSTEM**

MAIN ENGINES 2x Caterpillar 3412C TA/B  
 TOTAL POWER 1074 bkW (1440 bhp) at 1800 rpm  
 GEARBOXES 2x Reintjes WAF 364L 1: 4.48  
 PROPELLERS 2x Bronze fixed pitch Promarin  
 NOZZLES 2x 1500 mm van de Giessen Optima

**AUXILIARY EQUIPMENT**

GENERATOR SET Lister DWS 4  
 CAPACITY 27.5 kVA, 50 Hz, 230/400 V, 3 phase  
 HARBOUR GENERATOR SET Lister LPW 4  
 CAPACITY 14 kVA, 50 Hz, 230/400 V, 3 phase  
 BATTERY SET 24 V 200 Ah  
 SECOND BATTERY SET 24 V 200 Ah  
 CENTRAL HEATING Kabola, oil fired boiler

**DECK LAY-OUT**

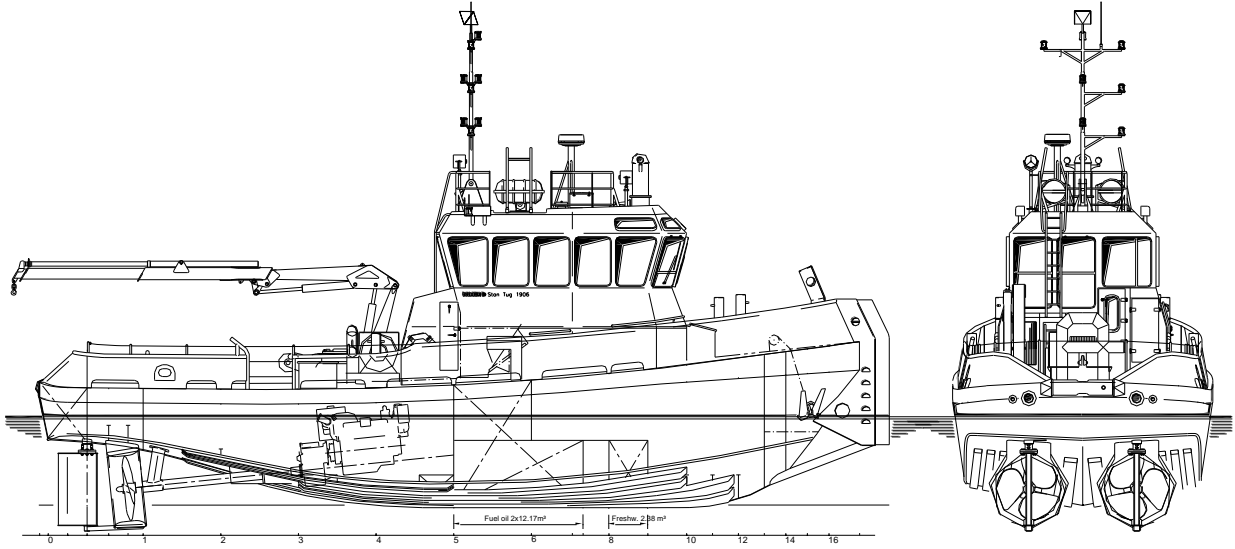
ANCHOR 2x 105 kg Pool (High Holding Power)  
 CHAIN (TOT.) 200 m shortlink 16 mm U2/Q2  
 ANCHOR WINCH Hydraulic  
 TOWING HOOK Mampaey, SWL 250 kN  
 TOWING WINCH Kraayeveld, holding power 45 t  
 DECKCRANE Heila HLM 13-3S, 1.0 ton at 10.97 m,  
 with winch 1.6 ton  
 STERNROLLER Integrated

**ACCOMMODATION**

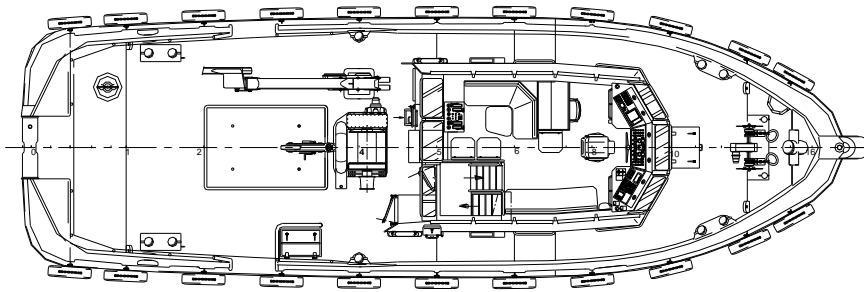
Accommodation for 4 persons consisting of one crew cabin for 4 persons, a galley and sanitary facilities. The Vessel is suited to transport 12 passengers, seated in the wheelhouse.

**NAUTICAL AND COMMUNICATION EQUIPMENT**

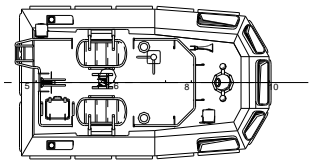
RADAR SYSTEM Furuno FR-7062  
 COMPASS Magnetic, Cassens & Plath, Kotter type  
 AUTOPILOT Simrad AP-50  
 GPS Furuno GP-90  
 VHF 1x Sailor RT5022, 1x Sailor RT2048  
 ECHOSOUNDER Furuno FCV 600L  
 NAVTEX Furuno NX-700  
 SEARCHLIGHT 24 V 250 W Pesch  
 PC PLOTTER Transas software



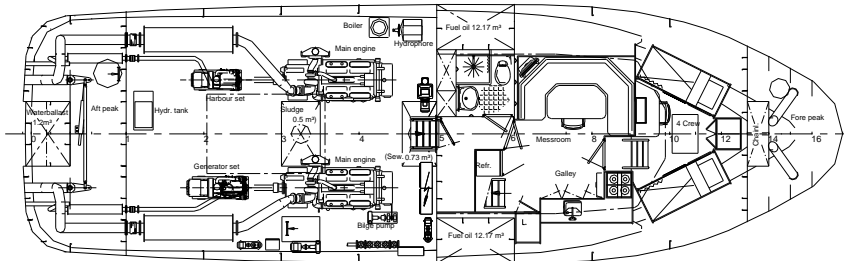
Maindeck



Topdeck



Below Maindeck



PORTS

‘ ST DAVID ’

DAMEN STAN TUG® 1906

Stena Line Ports Limited  
 Stena House  
 Station Approach  
 Holyhead  
 Anglesey  
 LL65 1DQ

Tel No: 01407-606700  
 Fax No: 01407-606622

Registered office  
 1 Suffolk Way  
 Sevenoaks  
 Kent TN13 1XL  
 Registered in England  
 No : 1593558