

Compliance Assessment Report CAR_NRW0044700

Permit being assessed: AN0233301

For: TRERHYNGYLL PS WEST OF JANE HODGE H, held by DWR CYMRU CYFYNGEDIG

At: TRERHYNGYLL PS WEST OF JANE HODG, WEST OF JANE HODGE HOTEL MAENDY, MAENDY ,, MAENDY ,, ,,

Type of assessment carried out: Report/Data Review, Reason: Incident Response (Incident number: 2409784).

On 08/07/2024.

Parts of permit assessed: All

NRW Lead Officer: Alexander Grainger.

Report sent to: DCWW CARS Mailbox, DCWW CARS Mailbox, on 31/07/2024.

1. Summary of our findings (full details in section 4)

Part of permitted activity assessed (criteria)	Assessment result	Permit condition
WQ-C1 - Water Quality - Emissions and monitoring - Emissions to water	C3 Minor	Conditions of consent (1)
WQ-B2 - Water Quality - Operations - The site	C4 No impact	Conditions of consent (9)

Result types are explained in more detail in the 'Important Information' section below.

2. What action is required?

Criteria	Action needed	Complete by
WQ-C1	Carry out more regular maintenance of asset to ensure similar discharges don't occur going forward due to lack of maintenance.	11/10/2024
WQ-B2	Investigate reason(s) for asset comms failure and look to remediate to ensure alarms can be received and responded to, allowing effective monitoring of this asset.	11/10/2024

Action criteria codes are listed in the 'Important information' section below.

3. What will happen next?

Any non-compliance we have identified and recorded on this form is an offence. It can result in criminal prosecution and/or suspension or revocation of your permit.

You are non-compliant with your permit.

We are currently considering taking enforcement action against you for the non-compliance recorded above. We will contact you in due course.

4. Details of our assessment

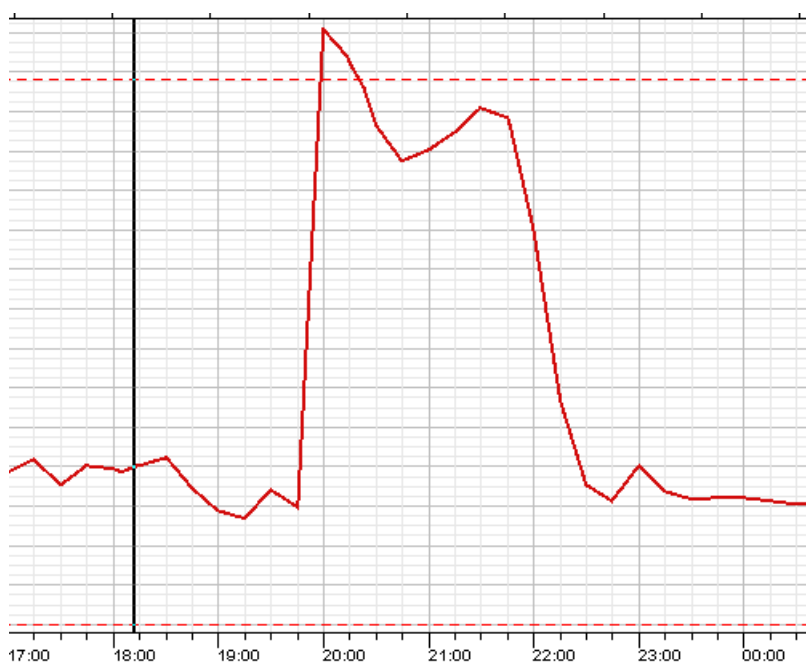
31/07/2024 AMENDMENT: Changed C3 non-compliance condition from conditions of consent (3) to conditions of consent (1) due to input error.

This CAR form is in response to a recent self-report from DCWW (WIRS 2409784) on 24/06/2024 which caused the asset to go into spill.

The asset went into comms failure due to an issue with the level sensor which caused the pumps to not activate. Further inspection from DCWW revealed that there was rag present in the wet well which was causing issues with the level sensor getting readings to allow the pumps to activate when needed. This then caused the asset to go into spill at around 19:40pm and the pumps were activated manually. No samples were taken by DCWW due to the brook being seasonal and having no flow.

The duration of the spill was from 19:40pm to approximately 20:20pm, totalling about 40 minutes of spill time as shown in the data from DCWW:

The solid red line indicating the sump level.
The dotted red line indicating the spill threshold.



ime	Address	Data Type	Intersect Time	Intersect	Units
LEVEL	E25114	Raw Data	24-Jun-2024 18:10:47	0.993651	m

DCWW have said they are discussing internally to get more regular maintenance at this asset and have claimed that the pollution was purely to land due to the brook being seasonal.

Although it has been stated that the discharge is a seasonal brook, this is a tributary which feeds the river Thaw. It is also seen in pictures from DCWW that there is some flow in the watercourse by the point of discharge.



Considering the nature of the discharge on this occasion, NRW have determined that this spill is not within its permitted activities and therefore non-compliant. This has been categorised as C3 non-compliance.

If you have any queries about this report, or to discuss completion of any actions, please contact the NRW Officer named above.

Important information

Legal status of this report

Your permit is issued to you under the Environmental Permitting Regulations. You have a responsibility to comply with the conditions of your permit and prevent pollution/harm to the environment. You must also ensure that you comply with any other relevant legislation that may apply to your site's operations.

This report explains the findings of our assessment and any action you are required to take. We categorise non-compliance using our guidance for assessing non-compliance at regulated sites.

When we find potential non-compliance/s we will normally give you advice on how to maintain compliance.

To correct non-compliance, we may:

- require you to take specific actions
- issue a notice
- review the conditions of your permit.

Any advice and guidance we give will be without prejudice to any other enforcement response that we consider may be required.

Assessment results and non-compliance categories (used in section 1):

Assessment result	Description
Assessed (A)	Assessed or assessed in part, no evidence of non-compliance found
Action only (X)	Action only relating to the activity assessment
Ongoing (O)	Ongoing non-compliance, not scored

Non-compliance category	Description
C1 Major	Potential to have a major, serious, persistent and/or extensive impact or effect on the environment, people and/or property
C2 Significant	Potential to have a significant impact or effect on the environment, people and/or property
C3 Minor	Potential to have a minor or minimal impact or effect on the environment, people and/or property
C4 No environmental impact	Non-compliance at a regulated site that cannot foreseeably have any impact on the environment, people and/or property

If your assessment result in Section 1 is suspended, what does this mean?

In line with our guidance, we may suspend non-compliance for up to six months to allow time for remedial action to be taken. These will be re-instated if the action is not completed.

Full list of water quality action criteria (used in section 1 and 2):**WQ A: Management**

- WQ-A1 General management

WQ B: Operations

- WQ-B1 Permitted activities
- WQ-B2 The site
- WQ-B3 Operating techniques
- WQ-B4 Improvement programme
- WQ-B5 Pre-operational conditions

WQ C: Emissions and monitoring

- WQ-C1 Emissions to water
- WQ-C2 Emissions to land
- WQ-C3 Emissions of substances not controlled by emission limits
- WQ-C4 Installation of monitoring boreholes

WQ D: Information

- WQ-D1 Records
- WQ-D2 Reporting
- WQ-D3 Notifications

Enforcement response

Any permit condition non-compliance is an offence and we may take legal action against you. Action we take can include prosecution, serving a notice on you and/or suspension or revocation of your permit. See our Enforcement and Sanctions Guidance for further information.

Data protection notice

You should make sure that anyone named in this report knows that the information it contains will be processed by Natural Resources Wales to fulfil its regulatory and monitoring functions and to maintain the relevant public register(s).

We may also use and/or disclose the report in connection with:

- offering or providing you with our literature or services relating to environmental matters
- consulting with the public, public bodies and other organisations (e.g. Health and Safety Executive, local authorities) on environmental issues
- carrying out statistical analysis, research and development on environmental issues
- providing public register information to enquirers
- investigating possible breaches of environmental law
- assessing customer service satisfaction and improving our service
- Freedom of Information Act or Environmental Information Regulations requests.

We may also pass it on to our agents or representatives to do these things on our behalf.

Disclosure of information – this report will be available to view on-line

If you think this report contains commercially confidential information that should not be placed on our public register, you must contact your local Natural Resources Wales office within **fifteen working days** of receiving this report, using the contact details in the accompanying email or letter. You must give a full explanation of why it should not be

added to our public register, including specifying which information is commercially confidential. We will assess your request and respond to you within 20 working days to let you know if we agree to your request.

What do I do if I disagree with the report or have a complaint?

If you disagree with this compliance assessment report, you should contact the lead officer without delay to discuss your concerns.

If you are unable to resolve the issue with the lead officer or their line manager you should contact our Customer Contact team on 0300 065 3000 (Monday to Friday 08:00 – 18:00), or email enquiries@naturalresourceswales.gov.uk for details of how to raise your dispute further through our Complaints and Commendations procedure.

If you are dissatisfied with our response, you can contact the Public Services Ombudsman for Wales by phone on 0300 7900203 or by email at ask@ombudsman.wales

Welsh Language Standards

We are committed to establishing Natural Resources Wales as a naturally bilingual organisation. We will provide compliance reports in your preferred language.