

Compliance Assessment Report CAR_NRW0044886

Permit being assessed: AW1004401

For: Newbridge-on-Wye Wastewater Treatment Works, held by DWR CYMRU
CYFYNGEDIG

At: Off A470, Newbridge-on-Wye, Llandrindod Wells, Powys, LD1 6LH.

Type of assessment carried out: Site Inspection, Reason: Routine.

On 29/07/2024, between 11:04 and 11:34.

Parts of permit assessed: See Criteria Below

NRW Lead Officer: Robert Harding.

Report sent to: CARS Mailbox, CARS Mailbox, on 06/08/2024.

1. Summary of our findings (full details in section 4)

Part of permitted activity assessed (criteria)	Assessment result	Permit condition
WQ-A1 - Water Quality - Management - General management	Assessed (A)	
WQ-B1 - Water Quality - Operations - Permitted activities	Assessed (A)	
WQ-B2 - Water Quality - Operations - The site	Assessed (A)	
WQ-B3 - Water Quality - Operations - Operating techniques	Assessed (A)	
WQ-C1 - Water Quality - Emissions and monitoring - Emissions to water	Assessed (A)	

Result types are explained in more detail in the 'Important Information' section below.

2. What action is required?

No action required.

3. What will happen next?

Any non-compliance we have identified and recorded on this form is an offence. It can result in criminal prosecution and/or suspension or revocation of your permit.

At this time, we do not intend to take any further action.

This statement does not stop us from taking additional enforcement action if further relevant information comes to light or offences continue.

4. Details of our assessment

This was a pre-planned OSM site inspection carried out by Natural Resources Wales Officer Robert Harding. I was

shown around the site by the following DCWW representatives.

MH- Operational Supervisor

OB- Process Scientist

The weather during the visit was very warm and dry. I was shown through the works from inlet through to the outfall.

General Observations

The WWTW is an aeration works which process domestic effluent only. It is attended daily by an operator but is not manned, the works has telemetry in place for monitoring. This site has recently received an updated permit with additional effluent quality limits, as a result this site now falls under Operator Self-Monitoring Tier 3 requirements, effective from 22/02/2024)

There is a storm discharge present at the works under Permit AB3497FZ.

Inlet and Storm Channel

The flows into the works are from a combination of gravity and pumped sewers. Incoming flows into the works pass through the storm weir chamber before reaching the inlet. The storm weir on site is a hard-set weir setting within the channel before any screening takes place.

The storm discharge is controlled by a flotation gate within the inlet channel. As the flows into the inlet increase, the level in the flotation chamber rises, which in turn causes the gate to close. The gate closing raises the water level within the storm weir channel/chamber, once this reaches a certain height, flows will begin flowing over the weir into the storm system. When the incoming flows then drops, the level in the chamber will lower to the point where the gate is the opened. At the time of inspection, the gate was not closed and there were no flows entering the storm system. There are screens in place on the storm weir with approximately 6mm aperture. There was no evidence to suggest any recent discharges into the storm channel, as the channel appeared dry and clear of any rag etc. There is no storm storage capacity at this works, therefore any storm discharges are made directly to the watercourse.



Following the storm weir chamber, all flows pass through a powered brush screen, which operates based on a set level at the input. This appeared operational at the time of inspection. There is EDM monitoring equipment in place on the inlet. There were no signs of significant solids or rags passing through to the next stage of treatment.

The MCERT flow meter is located between the inlet and the aeration lanes within the works. The MCERTS display was clearly operational and had appropriate signage and calibration dates displayed.

Aeration (Activated Sludge)

The aeration system present is an oval/hippodrome shaped aeration ditch with two separate aerators. The first Aerator runs continuously and is supported by a second aerator which runs every 15 mins (5-minute run time). The second aerator will additionally kick in if Dissolved Oxygen levels become too low within the aeration lane. There is a dissolved

oxygen meter in operation to monitor DO levels and control the second aerator.

There is a pump in place for Return Activated Sludge, which allows sludge from the treatment process to be returned into the start of the aeration process to maintain an appropriate sludge blanket within the treatment area. Additionally, there is a pump for Surplus Activated Sludge, which is operated when required to remove excess sludge.

The outfall of the aeration ditch is through a weir on the side of the aeration ditch. The height of the outfall weir can be manually altered by operatives if required. There were no signs of significant solids passing over the outfall weir and the aeration system appeared to be operating effectively.



Final Settlement

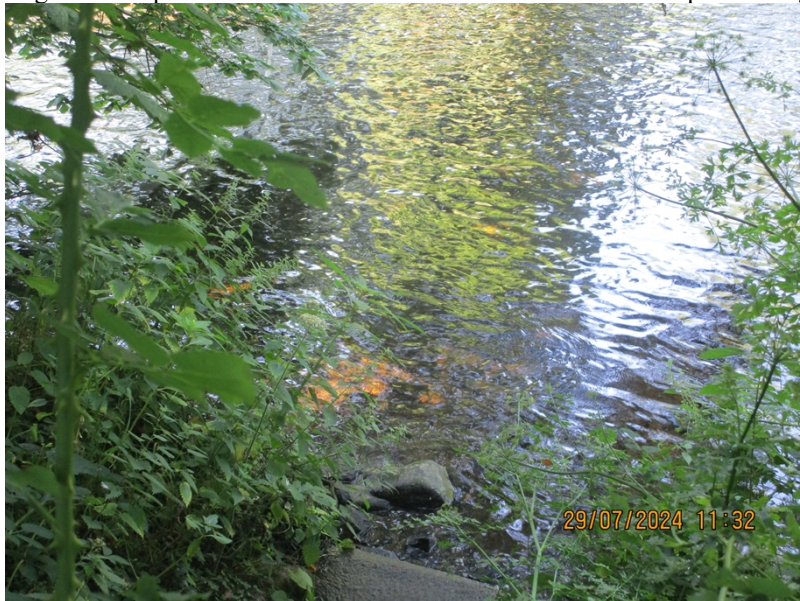
There is a single circular final settlement tank on site, with a rotating bridge and brush on the outfall channel. Monitoring equipment is also in place for when the site is unmanned. The settlement system appeared to be operating effectively, and there were no signs of excessive carry over of solids or sewage fungus present in the outfall channel. Overall, the final settlement system appeared in good working order.



Outfall and Sampling point

The Final effluent sampling point is clearly marked with appropriate signage including the sample point number. The

outfall appeared to be flowing clearly and there were no signs of problems within the effluent. The outfall flows down a channel from the works into the nearby river Wye. On inspection, there were no signs of discolouration, or sewage fungus build up within the outfall channel or downstream of the point of ingress.



The storm outfall was inspected, and the channel appeared completely dry, and there were no signs of recent use. The watercourse appeared clear of any signs of a recent discharge or impact from the storm discharge at the works. There is a storm valve installed on the outfall pipe of the storm discharge,

-

General Comments

-

In terms of works operation, it appears the treatment process is producing effluent within consented limits. The site does not have back up power, meaning if there is a power failure the treatment process will be reduced (screen and aeration). There is a generator at Rhayader WWTW, which can be used in the event of a power failure.

If you have any queries about this report, or to discuss completion of any actions, please contact the NRW Officer named above.

Important information

Legal status of this report

Your permit is issued to you under the Environmental Permitting Regulations. You have a responsibility to comply with the conditions of your permit and prevent pollution/harm to the environment. You must also ensure that you comply with any other relevant legislation that may apply to your site's operations.

This report explains the findings of our assessment and any action you are required to take. We categorise non-compliance using our guidance for assessing non-compliance at regulated sites.

When we find potential non-compliance/s we will normally give you advice on how to maintain compliance.

To correct non-compliance, we may:

- require you to take specific actions
- issue a notice
- review the conditions of your permit.

Any advice and guidance we give will be without prejudice to any other enforcement response that we consider may be required.

Assessment results and non-compliance categories (used in section 1):

Assessment result	Description
Assessed (A)	Assessed or assessed in part, no evidence of non-compliance found
Action only (X)	Action only relating to the activity assessment
Ongoing (O)	Ongoing non-compliance, not scored

Non-compliance category	Description
C1 Major	Potential to have a major, serious, persistent and/or extensive impact or effect on the environment, people and/or property
C2 Significant	Potential to have a significant impact or effect on the environment, people and/or property
C3 Minor	Potential to have a minor or minimal impact or effect on the environment, people and/or property
C4 No environmental impact	Non-compliance at a regulated site that cannot foreseeably have any impact on the environment, people and/or property

If your assessment result in Section 1 is suspended, what does this mean?

In line with our guidance, we may suspend non-compliance for up to six months to allow time for remedial action to be taken. These will be re-instated if the action is not completed.

Full list of water quality action criteria (used in section 1 and 2):**WQ A: Management**

- WQ-A1 General management

WQ B: Operations

- WQ-B1 Permitted activities
- WQ-B2 The site
- WQ-B3 Operating techniques
- WQ-B4 Improvement programme
- WQ-B5 Pre-operational conditions

WQ C: Emissions and monitoring

- WQ-C1 Emissions to water
- WQ-C2 Emissions to land
- WQ-C3 Emissions of substances not controlled by emission limits
- WQ-C4 Installation of monitoring boreholes

WQ D: Information

- WQ-D1 Records
- WQ-D2 Reporting
- WQ-D3 Notifications

Enforcement response

Any permit condition non-compliance is an offence and we may take legal action against you. Action we take can include prosecution, serving a notice on you and/or suspension or revocation of your permit. See our Enforcement and Sanctions Guidance for further information.

Data protection notice

You should make sure that anyone named in this report knows that the information it contains will be processed by Natural Resources Wales to fulfil its regulatory and monitoring functions and to maintain the relevant public register(s).

We may also use and/or disclose the report in connection with:

- offering or providing you with our literature or services relating to environmental matters
- consulting with the public, public bodies and other organisations (e.g. Health and Safety Executive, local authorities) on environmental issues
- carrying out statistical analysis, research and development on environmental issues
- providing public register information to enquirers
- investigating possible breaches of environmental law
- assessing customer service satisfaction and improving our service
- Freedom of Information Act or Environmental Information Regulations requests.

We may also pass it on to our agents or representatives to do these things on our behalf.

Disclosure of information – this report will be available to view on-line

If you think this report contains commercially confidential information that should not be placed on our public register, you must contact your local Natural Resources Wales office within **fifteen working days** of receiving this report, using the contact details in the accompanying email or letter. You must give a full explanation of why it should not be

added to our public register, including specifying which information is commercially confidential. We will assess your request and respond to you within 20 working days to let you know if we agree to your request.

What do I do if I disagree with the report or have a complaint?

If you disagree with this compliance assessment report, you should contact the lead officer without delay to discuss your concerns.

If you are unable to resolve the issue with the lead officer or their line manager you should contact our Customer Contact team on 0300 065 3000 (Monday to Friday 08:00 – 18:00), or email enquiries@naturalresourceswales.gov.uk for details of how to raise your dispute further through our Complaints and Commendations procedure.

If you are dissatisfied with our response, you can contact the Public Services Ombudsman for Wales by phone on 0300 7900203 or by email at ask@ombudsman.wales

Welsh Language Standards

We are committed to establishing Natural Resources Wales as a naturally bilingual organisation. We will provide compliance reports in your preferred language.