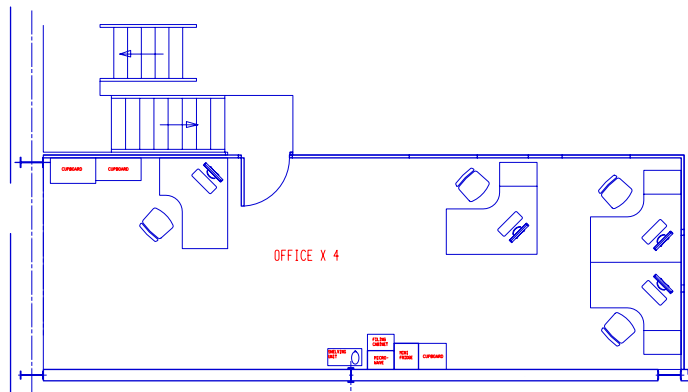


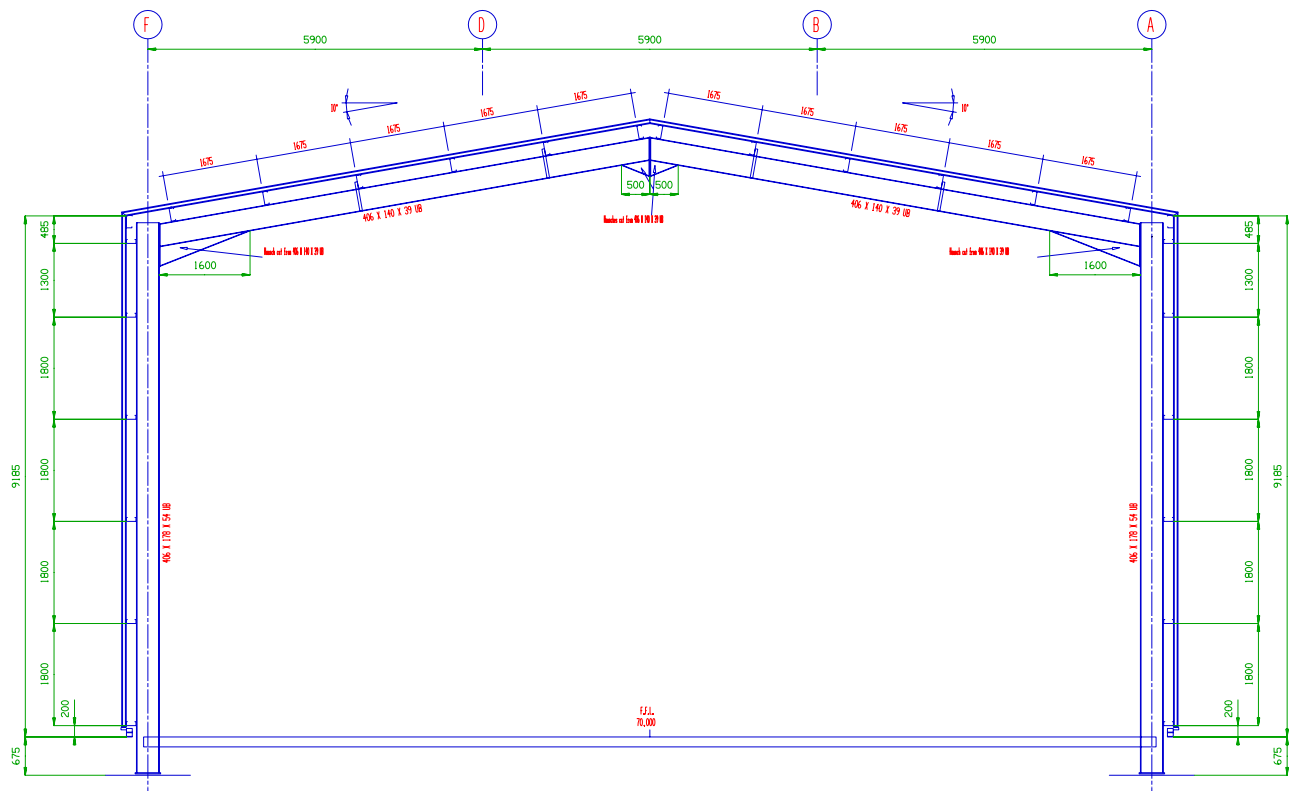
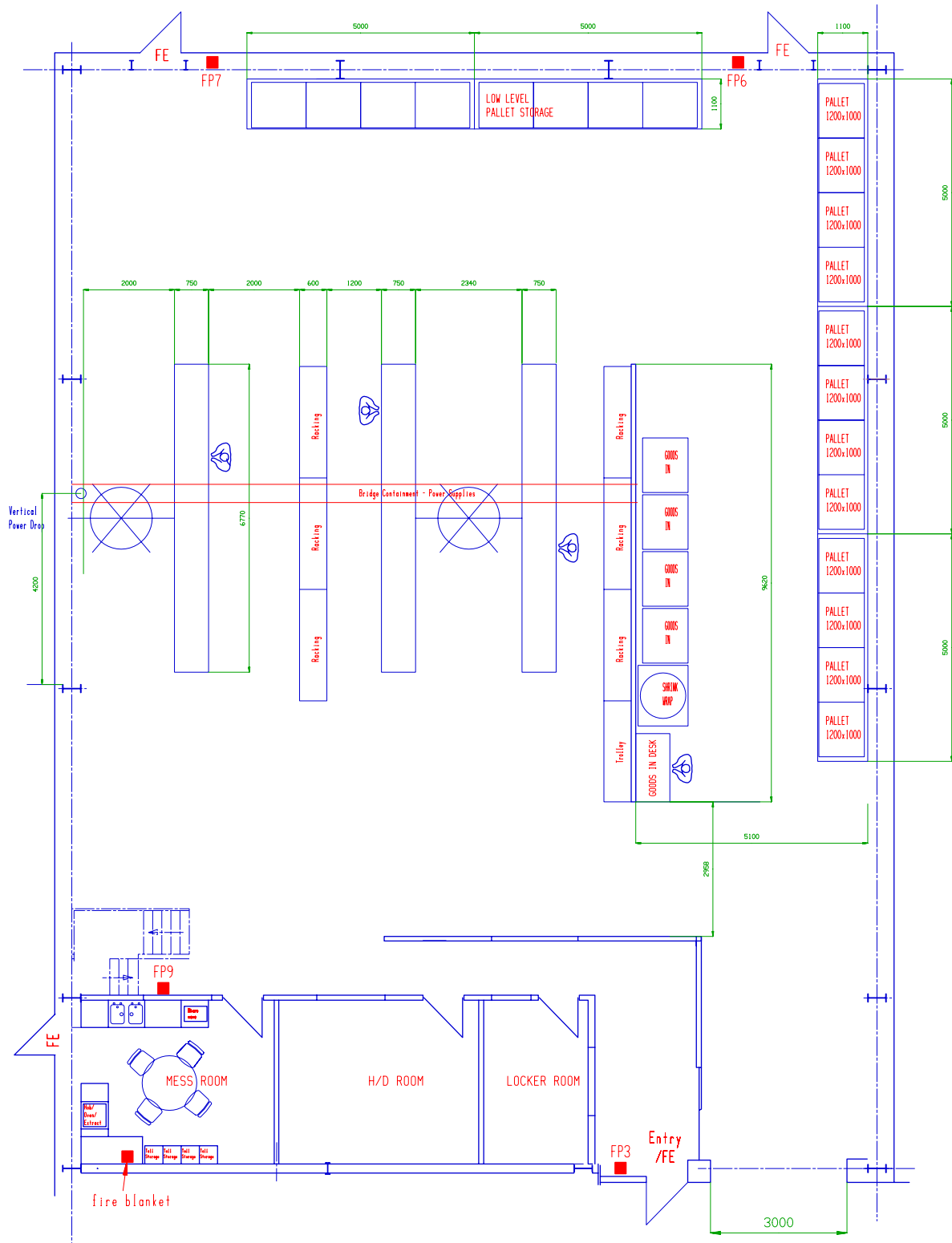
SECTION LOOKING SOUTH

FIRE POINTS

- FP3 - 1x POWDER, 1x CO2
- FP6 - 1x CO2
- FP7 - 1x CO2
- FP9 - 1x CO2



FIRST FLOOR



TYPICAL SECTION LOOKING NORTH

H	Fire Points added	JH 03/12/24
G	Updated Layout	SD 26/11/24
F	UPDATED LAYOUT (FIRST FLOOR)	CC 06/12/16
E	Scale reduced - Elevated section added	JH 30/10/13
D	Updated Layout	JH 30/03/11
C	Updated Layout	RHS 01/10/07
A	INITIAL ISSUE	
ISSUE	REVISION	SIG.&DATE
ROYAL MINT LLANTRISANT		

THIS DRAWING IS THE SOLE PROPERTY OF THE ROYAL MINT AND MUST NOT BE WHOLLY OR PARTLY REPRODUCED WITHOUT PERMISSION	SURFACE FINISH MICROMETRE SYMBOLS ARE TO BS.1134 $\mu m Ra$ SYSTEM SURFACES MARKED THIS TO μm MACHINED TO FINISH INDICATED	NOTE SURFACE FINISH TO BE OR UNDER UNLESS OTHERWISE STATED	3.2 ✓	THREADS TO BS.3643 PT. 2, NUTS CLASS 6H BOLTS CLASS 6g	TOLERANCE UNLESS OTHERWISE STATE		0-50+0.1 50-100+0.2 100-300+0.3 300-1000+0.5 CASTINGS +2.0 ANGULAR +0.25°		VOCAB No	DRWG No.
					MATERIAL	TREATMENT OR FINISH	TITLE	CURRENT LAYOUT - BUILDING 29	90400/29/00/001 -1	
									ISSUE: AXXXXXXH	