

# **RHIZA** Nutrient Management Plan Coombe Farms Manure NMP 2021

---

## **Coombe Farms Harvest Year 2021**

Created by: nathan.lewis

Fertilisers Required			
Product	Total	In Stock	To Buy
<b>Poultry - Broiler/Turkey Litter (60% D.M.) (tonnes)</b>	<b>2400.3</b>	<b>0</b>	<b>2400.3</b>

### NMax Calculations

Crop: Barley (winter, malting)

Year: 2021

Unadjusted NMax Limit: 180

Field Name & Zone Ref	Area (Ha)	Expected Yield (T/Ha)	Adjustments					Adjusted NMax Limit	Maximum limit for applied N
			Shallow Soil	Yield	Milling Wheat	Paper Sludge or Straw	3+ cuts of Grass		
Artesian Well 4 26 - Whole Field	3.8	10	0	70	0	0	0	250	950
Cophill 17 Acres - Whole Field	6.2	10	0	70	0	0	0	250	1550
Trellenny 1 - Whole Field	3.4	10	0	70	0	0	0	250	850
Trellenny 2 - Whole Field	5.6	10	0	70	0	0	0	250	1400
Trellenny 3 - Whole Field	6	10	0	70	0	0	0	250	1500
Trellenny 4 - Whole Field	5	10	0	70	0	0	0	250	1250
Trellenny 5 - Whole Field	2.4	10	0	70	0	0	0	250	600
Trellenny 6 - Whole Field	2.9	10	0	70	0	0	0	250	725
Trellenny 7 - Whole Field	4.9	10	0	70	0	0	0	250	1225
MAXIMUM LIMIT FOR N APPLIED TO THE CROP:									10050

### Livestock Manure N Applications to Barley (winter, malting)

Field Name & Zone Ref	Area (Ha)	Manure Type	Application Rate (t/ha or m3/ha)	Total Applied	Total N Content (kg)	% of N Availability	Total Crop Available N
Artesian Well 4 26 - Whole Field	3.8	Poultry - Broiler/Turkey Litter (60% D.M.)	7	27	802	20	160
Cophill 17 Acres - Whole Field	6.2	Poultry - Broiler/Turkey Litter (60% D.M.)	7	44	1309	20	262
Trellenny 1 - Whole Field	3.4	Poultry - Broiler/Turkey Litter (60% D.M.)	7	24	718	20	144
Trellenny 2 - Whole Field	5.6	Poultry - Broiler/Turkey Litter (60% D.M.)	7	39	1182	20	236
Trellenny 3 - Whole Field	6	Poultry - Broiler/Turkey Litter (60% D.M.)	7	42	1266	20	253
Trellenny 4 - Whole Field	5	Poultry - Broiler/Turkey Litter (60% D.M.)	7	35	1055	20	211
Trellenny 5 - Whole Field	2.4	Poultry - Broiler/Turkey Litter (60% D.M.)	7	17	507	20	101
Trellenny 6 - Whole Field	2.9	Poultry - Broiler/Turkey Litter (60% D.M.)	7	20	612	20	122
Trellenny 7 - Whole Field	4.9	Poultry - Broiler/Turkey Litter (60% D.M.)	7	34	1034	20	207
<b>TOTAL AMOUNT OF CROP AVAILABLE NITROGEN FROM ALL APPLICATIONS OF LIVESTOCK MANURE:</b>							<b>1696</b>

# RHIZA

## Nutrient Management Plan Coombe Farms Manure NMP 2021

### Manufactured Fertiliser N Applications to Barley (winter, malting)

Field Name & Zone Ref	Area (Ha)	Total Nitrogen Rate (kg)	Total N applied to Field (kg)
Artesian Well 4 26 - Whole Field	3.8	0	0
Cophill 17 Acres - Whole Field	6.2	0	0
Trellenny 1 - Whole Field	3.4	0	0
Trellenny 2 - Whole Field	5.6	0	0
Trellenny 3 - Whole Field	6	0	0
Trellenny 4 - Whole Field	5	0	0
Trellenny 5 - Whole Field	2.4	0	0
Trellenny 6 - Whole Field	2.9	0	0
Trellenny 7 - Whole Field	4.9	0	0
<b>TOTAL N FROM MANUFACTURED NITROGEN FERTILISER:</b>			<b>0</b>

TOTAL CROP AVAILABLE N FROM APPLICATIONS OF LIVESTOCK MANURE		TOTAL N FROM MANUFACTURED NITROGEN FERTILISER		TOTAL N APPLIED TO CROP TYPE
1696	+	0	=	1696

MAXIMUM LIMIT FOR APPLIED N	TOTAL N APPLIED TO CROP TYPE
10050	1696

## Nutrient Management Plan Coombe Farms Manure NMP 2021

Crop: Forage maize

Year: 2021

Unadjusted NMax Limit: 150

Field Name & Zone Ref	Area (Ha)	Expected Yield (T/Ha)	Adjustments					Adjusted NMax Limit	Maximum limit for applied N
			Shallow Soil	Yield	Milling Wheat	Paper Sludge or Straw	3+ cuts of Grass		
Back Field - Whole Field	3.7	45	0	0	0	0	0	150	555
Cophill Plough Field - Whole Field	5.6	45	0	0	0	0	0	150	840
Corner Field - A	2.9	45	0	0	0	0	0	150	434.55
Corner Field - B	1.02	45	0	0	0	0	0	150	153.65
Gas Station STU - Whole Field	4.6	45	0	0	0	0	0	150	690
Herns HS - Whole Field	2	45	0	0	0	0	0	150	300
No 1 Dick the Miller - A	2.31	45	0	0	0	0	0	150	345.84
No 1 Dick the Miller - B	1.11	45	0	0	0	0	0	150	166.36
No 2 Dick the Miller - A	3.03	45	0	0	0	0	0	150	453.87
No 3 Dick the Miller - A	1.98	45	0	0	0	0	0	150	297.7
No 3 Dick the Miller - B	1.87	45	0	0	0	0	0	150	280.9
No 3 Dick the Miller - C	2.62	45	0	0	0	0	0	150	393.22
No 3 Dick the Miller - D	2.63	45	0	0	0	0	0	150	395.19
Parkers - A	1.94	45	0	0	0	0	0	150	290.33
Parkers - B	2.19	45	0	0	0	0	0	150	328.41
Parkers - C	2.93	45	0	0	0	0	0	150	438.97
Parkers - D	2.48	45	0	0	0	0	0	150	372.18
Parkers - E	1.93	45	0	0	0	0	0	150	288.93
Parkers - F	2.04	45	0	0	0	0	0	150	305.91
Parkers - G	1.3	45	0	0	0	0	0	150	194.98

Parkers - H	1.79	45	0	0	0	0	0	150	269.18
Penline - A	1.93	45	0	0	0	0	0	150	290.2
Penline - B	2.99	45	0	0	0	0	0	150	448.7
Penline - C	1.93	45	0	0	0	0	0	150	289.69
Penline - D	1.6	45	0	0	0	0	0	150	239.67
Pond Field - Whole Field	7.8	45	0	0	0	0	0	150	1170
Slough HS - Whole Field	3.3	45	0	0	0	0	0	150	495
Triangle STU - Whole Field	5.5	45	0	0	0	0	0	150	825
Under The Wood STU - Whole Field	7.7	45	0	0	0	0	0	150	1155
<b>MAXIMUM LIMIT FOR N APPLIED TO THE CROP:</b>									<b>12708.44</b>

### Livestock Manure N Applications to Forage maize

Field Name & Zone Ref	Area (Ha)	Manure Type	Application Rate (t/ha or m3/ha)	Total Applied	Total N Content (kg)	% of N Availability	Total Crop Available N
Back Field - Whole Field	3.7	Poultry - Broiler/Turkey Litter (60% D.M.)	7	26	781	20	156
Cophill Plough Field - Whole Field	5.6	Poultry - Broiler/Turkey Litter (60% D.M.)	7	39	1182	20	236
Corner Field - A	2.9	Poultry - Broiler/Turkey Litter (60% D.M.)	7	20	612	20	122
Corner Field - B	1.02	Poultry - Broiler/Turkey Litter (60% D.M.)	7	7	216	20	43

Gas Station STU - Whole Field	4.6	Poultry - Broiler/Turkey Litter (60% D.M.)	7	32	971	20	194
Herns HS - Whole Field	2	Poultry - Broiler/Turkey Litter (60% D.M.)	7	14	422	20	84
No 1 Dick the Miller - A	2.31	Poultry - Broiler/Turkey Litter (60% D.M.)	7	16	487	20	97
No 1 Dick the Miller - B	1.11	Poultry - Broiler/Turkey Litter (60% D.M.)	7	8	234	20	47
No 2 Dick the Miller - A	3.03	Poultry - Broiler/Turkey Litter (60% D.M.)	7	21	639	20	128
No 3 Dick the Miller - A	1.98	Poultry - Broiler/Turkey Litter (60% D.M.)	7	14	419	20	84
No 3 Dick the Miller - B	1.87	Poultry - Broiler/Turkey Litter (60% D.M.)	7	13	395	20	79
No 3 Dick the Miller - C	2.62	Poultry - Broiler/Turkey Litter (60% D.M.)	7	18	553	20	111
No 3 Dick the Miller - D	2.63	Poultry - Broiler/Turkey Litter (60% D.M.)	7	19	556	20	111
Parkers - A	1.94	Poultry - Broiler/Turkey Litter (60% D.M.)	7	14	409	20	82
Parkers - B	2.19	Poultry - Broiler/Turkey Litter (60% D.M.)	7	15	462	20	92
Parkers - C	2.93	Poultry - Broiler/Turkey Litter (60% D.M.)	7	21	618	20	124

Parkers - D	2.48	Poultry - Broiler/Turkey Litter (60% D.M.)	7	17	524	20	105
Parkers - E	1.93	Poultry - Broiler/Turkey Litter (60% D.M.)	7	14	407	20	81
Parkers - F	2.04	Poultry - Broiler/Turkey Litter (60% D.M.)	7	14	430	20	86
Parkers - G	1.3	Poultry - Broiler/Turkey Litter (60% D.M.)	7	9	274	20	55
Parkers - H	1.79	Poultry - Broiler/Turkey Litter (60% D.M.)	7	13	379	20	76
Penline - A	1.93	Poultry - Broiler/Turkey Litter (60% D.M.)	7	14	408	20	82
Penline - B	2.99	Poultry - Broiler/Turkey Litter (60% D.M.)	7	21	631	20	126
Penline - C	1.93	Poultry - Broiler/Turkey Litter (60% D.M.)	7	14	408	20	82
Penline - D	1.6	Poultry - Broiler/Turkey Litter (60% D.M.)	7	11	337	20	67
Pond Field - Whole Field	7.8	Poultry - Broiler/Turkey Litter (60% D.M.)	7	55	1646	20	329
Slough HS - Whole Field	3.3	Poultry - Broiler/Turkey Litter (60% D.M.)	7	23	697	20	139
Triangle STU - Whole Field	5.5	Poultry - Broiler/Turkey Litter (60% D.M.)	7	39	1161	20	232



Under The Wood STU - Whole Field	7.7	Poultry - Broiler/Turkey Litter (60% D.M.)	7	54	1625	20	325
<b>TOTAL AMOUNT OF CROP AVAILABLE NITROGEN FROM ALL APPLICATIONS OF LIVESTOCK MANURE:</b>							<b>3575</b>

# RHIZA

## Nutrient Management Plan Coombe Farms Manure NMP 2021

### Manufactured Fertiliser N Applications to Forage maize

Field Name & Zone Ref	Area (Ha)	Total Nitrogen Rate (kg)	Total N applied to Field (kg)
Back Field - Whole Field	3.7	0	0
Cophill Plough Field - Whole Field	5.6	0	0
Corner Field - A	2.9	0	0
Corner Field - B	1.02	0	0
Gas Station STU - Whole Field	4.6	0	0
Herns HS - Whole Field	2	0	0
No 1 Dick the Miller - A	2.31	0	0
No 1 Dick the Miller - B	1.11	0	0
No 2 Dick the Miller - A	3.03	0	0
No 3 Dick the Miller - A	1.98	0	0
No 3 Dick the Miller - B	1.87	0	0
No 3 Dick the Miller - C	2.62	0	0
No 3 Dick the Miller - D	2.63	0	0
Parkers - A	1.94	0	0
Parkers - B	2.19	0	0
Parkers - C	2.93	0	0
Parkers - D	2.48	0	0
Parkers - E	1.93	0	0
Parkers - F	2.04	0	0
Parkers - G	1.3	0	0
Parkers - H	1.79	0	0
Penline - A	1.93	0	0
Penline - B	2.99	0	0
Penline - C	1.93	0	0
Penline - D	1.6	0	0
Pond Field - Whole Field	7.8	0	0
Slough HS - Whole Field	3.3	0	0
Triangle STU - Whole Field	5.5	0	0
Under The Wood STU - Whole Field	7.7	0	0
<b>TOTAL N FROM MANUFACTURED NITROGEN FERTILISER:</b>			<b>0</b>

TOTAL CROP AVAILABLE N FROM APPLICATIONS OF LIVESTOCK MANURE		TOTAL N FROM MANUFACTURED NITROGEN FERTILISER		TOTAL N APPLIED TO CROP TYPE
3575	+	0	=	3575

MAXIMUM LIMIT FOR APPLIED N	TOTAL N APPLIED TO CROP TYPE
12708	3575

## Nutrient Management Plan Coombe Farms Manure NMP 2021

Crop: Grass

Year: 2021

Unadjusted NMax Limit: 300

Field Name & Zone Ref	Area (Ha)	Expected Yield (T/Ha)	Adjustments					Adjusted NMax Limit	Maximum limit for applied N
			Shallow Soil	Yield	Milling Wheat	Paper Sludge or Straw	3+ cuts of Grass		
Big Field HS - Whole Field	7.2	25	0	0	0	0	0	300	2160
Chickory HS - Whole Field	3.2	25	0	0	0	0	0	300	960
Cophill 4 Acres - Whole Field	2	25	0	0	0	0	0	300	600
Crossways - A	2.79	25	0	0	0	0	0	300	837.86
Crossways - B	0.53	25	0	0	0	0	0	300	159.1
Crossways - C	4.1	25	0	0	0	0	0	300	1230.92
Crossways - D	0.47	25	0	0	0	0	0	300	141.45
Crossways - E	2.71	25	0	0	0	0	0	300	811.99
Crossways - F	1.49	25	0	0	0	0	0	300	446.29
Crossways - G	1.49	25	0	0	0	0	0	300	446.77
Crossways - H	4.18	25	0	0	0	0	0	300	1254.51
Crossways - I	2.09	25	0	0	0	0	0	300	625.92
Crossways - J	4.56	25	0	0	0	0	0	300	1369.14
Pond Field Small - Whole Field	1.2	25	0	0	0	0	0	300	360
MAXIMUM LIMIT FOR N APPLIED TO THE CROP:									11403.93

### Livestock Manure N Applications to Grass

Field Name & Zone Ref	Area (Ha)	Manure Type	Application Rate (t/ha or m3/ha)	Total Applied	Total N Content (kg)	% of N Availability	Total Crop Available N
Big Field HS - Whole Field	7.2	Poultry - Broiler/Turkey Litter (60% D.M.)	7	51	1520	20	304
Chickory HS - Whole Field	3.2	Poultry - Broiler/Turkey Litter (60% D.M.)	7	23	675	20	135
Cophill 4 Acres - Whole Field	2	Poultry - Broiler/Turkey Litter (60% D.M.)	7	14	422	20	84
Crossways - A	2.79	Poultry - Broiler/Turkey Litter (60% D.M.)	7	20	590	20	118
Crossways - B	0.53	Poultry - Broiler/Turkey Litter (60% D.M.)	7	4	112	20	22
Crossways - C	4.1	Poultry - Broiler/Turkey Litter (60% D.M.)	7	29	866	20	173
Crossways - D	0.47	Poultry - Broiler/Turkey Litter (60% D.M.)	7	3	100	20	20
Crossways - E	2.71	Poultry - Broiler/Turkey Litter (60% D.M.)	7	19	571	20	114
Crossways - F	1.49	Poultry - Broiler/Turkey Litter (60% D.M.)	7	10	314	20	63
Crossways - G	1.49	Poultry - Broiler/Turkey Litter (60% D.M.)	7	10	314	20	63

## Nutrient Management Plan Coombe Farms Manure NMP 2021

Crossways - H	4.18	Poultry - Broiler/Turkey Litter (60% D.M.)	7	29	883	20	177
Crossways - I	2.09	Poultry - Broiler/Turkey Litter (60% D.M.)	7	15	440	20	88
Crossways - J	4.56	Poultry - Broiler/Turkey Litter (60% D.M.)	7	32	963	20	193
Pond Field Small - Whole Field	1.2	Poultry - Broiler/Turkey Litter (60% D.M.)	7	8	253	20	51
<b>TOTAL AMOUNT OF CROP AVAILABLE NITROGEN FROM ALL APPLICATIONS OF LIVESTOCK MANURE:</b>							<b>1605</b>

# RHIZA

## Nutrient Management Plan Coombe Farms Manure NMP 2021

### Manufactured Fertiliser N Applications to Grass

Field Name & Zone Ref	Area (Ha)	Total Nitrogen Rate (kg)	Total N applied to Field (kg)
Big Field HS - Whole Field	7.2	0	0
Chickory HS - Whole Field	3.2	0	0
Cophill 4 Acres - Whole Field	2	0	0
Crossways - A	2.79	0	0
Crossways - B	0.53	0	0
Crossways - C	4.1	0	0
Crossways - D	0.47	0	0
Crossways - E	2.71	0	0
Crossways - F	1.49	0	0
Crossways - G	1.49	0	0
Crossways - H	4.18	0	0
Crossways - I	2.09	0	0
Crossways - J	4.56	0	0
Pond Field Small - Whole Field	1.2	0	0
<b>TOTAL N FROM MANUFACTURED NITROGEN FERTILISER:</b>			<b>0</b>

TOTAL CROP AVAILABLE N FROM APPLICATIONS OF LIVESTOCK MANURE		TOTAL N FROM MANUFACTURED NITROGEN FERTILISER		TOTAL N APPLIED TO CROP TYPE
1605	+	0	=	1605

MAXIMUM LIMIT FOR APPLIED N	TOTAL N APPLIED TO CROP TYPE
11404	1605

## Nutrient Management Plan Coombe Farms Manure NMP 2021

Crop: Wheat (winter)

Year: 2021

Unadjusted NMax Limit: 220

Field Name & Zone Ref	Area (Ha)	Expected Yield (T/Ha)	Adjustments					Adjusted NMax Limit	Maximum limit for applied N
			Shallow Soil	Yield	Milling Wheat	Paper Sludge or Straw	3+ cuts of Grass		
Artesian Well 11 49 - Whole Field	11.1	10	0	40	40	0	0	300	3330
Artesian Well 2 5 - Whole Field	2.2	10	0	40	40	0	0	300	660
Barley Hill - A	1.65	10	0	40	40	0	0	300	495.71
Barley Hill - B	2.3	10	0	40	40	0	0	300	689.93
Coalpits - A	1.83	10	0	40	40	0	0	300	548.1
Coalpits - B	2.35	10	0	40	40	0	0	300	705.79
Coalpits - C	2.14	10	0	40	40	0	0	300	642.38
Coalpits - D	2.09	10	0	40	40	0	0	300	625.57
Coalpits - E	2.31	10	0	40	40	0	0	300	694.26
Coalpits - F	2.19	10	0	40	40	0	0	300	655.63
Cophill Barnetts - Whole Field	9.1	10	0	40	40	0	0	300	2730
Cophill Big Hospital - Whole Field	7.9	10	0	40	40	0	0	300	2370
Edwards HS - Whole Field	2.4	10	0	40	40	0	0	300	720
Italian Ground Pond - Whole Field	3.3	10	0	40	40	0	0	300	990
Italian Ground Track - Whole Field	6.2	10	0	40	40	0	0	300	1860
Longmead - A	1.65	10	0	40	40	0	0	300	495.9
Longmead - B	2.73	10	0	40	40	0	0	300	819.38
Longmead - C	3.39	10	0	40	40	0	0	300	1017.97
Longmead - D	1.76	10	0	40	40	0	0	300	526.51
Longmead - E	1.56	10	0	40	40	0	0	300	468.88



Longmead - F	1.93	10	0	40	40	0	0	300	577.71
Longmead - G	1.31	10	0	40	40	0	0	300	393.54
Longmead - H	3.95	10	0	40	40	0	0	300	1184.9
Longmead - I	0.4	10	0	40	40	0	0	300	121.39
Longmead - J	3.58	10	0	40	40	0	0	300	1073.85
Main Road STU - Whole Field	5.3	10	0	40	40	0	0	300	1590
Oxenhams HS - Whole Field	1.6	10	0	40	40	0	0	300	480
Parkers STU - Whole Field	3.4	10	0	40	40	0	0	300	1020
Runston Field - Whole Field	4.7	10	0	40	40	0	0	300	1410
Seven View Field - Whole Field	16.6	10	0	40	40	0	0	300	4980
Shellys No 1 - Whole Field	5.1	10	0	40	40	0	0	300	1530
Shellys No 2 - Whole Field	4.8	10	0	40	40	0	0	300	1440
Shepherds - Whole Field	6.58	10	0	40	40	0	0	300	1975.05
Shirenewton Road HS - Whole Field	3.8	10	0	40	40	0	0	300	1140
Stoney Croft - Whole Field	10.4	10	0	40	40	0	0	300	3120
Tank Field - Whole Field	11.8	10	0	40	40	0	0	300	3540
Top Field - Whole Field	9.9	10	0	40	40	0	0	300	2970
Whiterns Pool Field - Whole Field	7.1	10	0	40	40	0	0	300	2130
Woodcocks - Whole Field	5.8	10	0	40	40	0	0	300	1740
<b>MAXIMUM LIMIT FOR N APPLIED TO THE CROP:</b>									<b>53462.44</b>

### Livestock Manure N Applications to Wheat (winter)

Field Name & Zone Ref	Area (Ha)	Manure Type	Application Rate (t/ha or m3/ha)	Total Applied	Total N Content (kg)	% of N Availability	Total Crop Available N
Artesian Well 11 49 - Whole Field	11.1	Poultry - Broiler/Turkey Litter (60% D.M.)	7	78	2343	20	469
Artesian Well 2 5 - Whole Field	2.2	Poultry - Broiler/Turkey Litter (60% D.M.)	7	15	464	20	93
Barley Hill - A	1.65	Poultry - Broiler/Turkey Litter (60% D.M.)	7	12	349	20	70
Barley Hill - B	2.3	Poultry - Broiler/Turkey Litter (60% D.M.)	7	16	485	20	97
Coalpits - A	1.83	Poultry - Broiler/Turkey Litter (60% D.M.)	7	13	386	20	77
Coalpits - B	2.35	Poultry - Broiler/Turkey Litter (60% D.M.)	7	17	497	20	99
Coalpits - C	2.14	Poultry - Broiler/Turkey Litter (60% D.M.)	7	15	452	20	90
Coalpits - D	2.09	Poultry - Broiler/Turkey Litter (60% D.M.)	7	15	440	20	88
Coalpits - E	2.31	Poultry - Broiler/Turkey Litter (60% D.M.)	7	16	488	20	98
Coalpits - F	2.19	Poultry - Broiler/Turkey Litter (60% D.M.)	7	15	461	20	92

Cophill Barnetts - Whole Field	9.1	Poultry - Broiler/Turkey Litter (60% D.M.)	7	64	1921	20	384
Cophill Big Hospital - Whole Field	7.9	Poultry - Broiler/Turkey Litter (60% D.M.)	7	56	1668	20	334
Edwards HS - Whole Field	2.4	Poultry - Broiler/Turkey Litter (60% D.M.)	7	17	507	20	101
Italian Ground Pond - Whole Field	3.3	Poultry - Broiler/Turkey Litter (60% D.M.)	7	23	697	20	139
Italian Ground Track - Whole Field	6.2	Poultry - Broiler/Turkey Litter (60% D.M.)	7	44	1309	20	262
Longmead - A	1.65	Poultry - Broiler/Turkey Litter (60% D.M.)	7	12	349	20	70
Longmead - B	2.73	Poultry - Broiler/Turkey Litter (60% D.M.)	7	19	577	20	115
Longmead - C	3.39	Poultry - Broiler/Turkey Litter (60% D.M.)	7	24	716	20	143
Longmead - D	1.76	Poultry - Broiler/Turkey Litter (60% D.M.)	7	12	370	20	74
Longmead - E	1.56	Poultry - Broiler/Turkey Litter (60% D.M.)	7	11	330	20	66
Longmead - F	1.93	Poultry - Broiler/Turkey Litter (60% D.M.)	7	14	406	20	81
Longmead - G	1.31	Poultry - Broiler/Turkey Litter (60% D.M.)	7	9	277	20	55

Longmead - H	3.95	Poultry - Broiler/Turkey Litter (60% D.M.)	7	28	834	20	167
Longmead - I	0.4	Poultry - Broiler/Turkey Litter (60% D.M.)	7	3	85	20	17
Longmead - J	3.58	Poultry - Broiler/Turkey Litter (60% D.M.)	7	25	756	20	151
Main Road STU - Whole Field	5.3	Poultry - Broiler/Turkey Litter (60% D.M.)	7	37	1119	20	224
Oxenhams HS - Whole Field	1.6	Poultry - Broiler/Turkey Litter (60% D.M.)	7	11	338	20	68
Parkers STU - Whole Field	3.4	Poultry - Broiler/Turkey Litter (60% D.M.)	7	24	718	20	144
Runston Field - Whole Field	4.7	Poultry - Broiler/Turkey Litter (60% D.M.)	7	33	992	20	198
Seven View Field - Whole Field	16.6	Poultry - Broiler/Turkey Litter (60% D.M.)	7	117	3504	20	701
Shellys No 1 - Whole Field	5.1	Poultry - Broiler/Turkey Litter (60% D.M.)	7	36	1077	20	215
Shellys No 2 - Whole Field	4.8	Poultry - Broiler/Turkey Litter (60% D.M.)	7	34	1013	20	203
Shepherds - Whole Field	6.58	Poultry - Broiler/Turkey Litter (60% D.M.)	7	46	1390	20	278
Shirenewton Road HS - Whole Field	3.8	Poultry - Broiler/Turkey Litter (60% D.M.)	7	27	802	20	160

Stoney Croft - Whole Field	10.4	Poultry - Broiler/Turkey Litter (60% D.M.)	7	73	2195	20	439
Tank Field - Whole Field	11.8	Poultry - Broiler/Turkey Litter (60% D.M.)	7	83	2491	20	498
Top Field - Whole Field	9.9	Poultry - Broiler/Turkey Litter (60% D.M.)	7	70	2090	20	418
Whiterns Pool Field - Whole Field	7.1	Poultry - Broiler/Turkey Litter (60% D.M.)	7	50	1499	20	300
Woodcocks - Whole Field	5.8	Poultry - Broiler/Turkey Litter (60% D.M.)	7	41	1224	20	245
<b>TOTAL AMOUNT OF CROP AVAILABLE NITROGEN FROM ALL APPLICATIONS OF LIVESTOCK MANURE:</b>							<b>7523</b>

### Manufactured Fertiliser N Applications to Wheat (winter)

Field Name & Zone Ref	Area (Ha)	Total Nitrogen Rate (kg)	Total N applied to Field (kg)
Artesian Well 11 49 - Whole Field	11.1	0	0
Artesian Well 2 5 - Whole Field	2.2	0	0
Barley Hill - A	1.65	0	0
Barley Hill - B	2.3	0	0
Coalpits - A	1.83	0	0
Coalpits - B	2.35	0	0
Coalpits - C	2.14	0	0
Coalpits - D	2.09	0	0
Coalpits - E	2.31	0	0
Coalpits - F	2.19	0	0
Cophill Barnetts - Whole Field	9.1	0	0
Cophill Big Hospital - Whole Field	7.9	0	0
Edwards HS - Whole Field	2.4	0	0
Italian Ground Pond - Whole Field	3.3	0	0
Italian Ground Track - Whole Field	6.2	0	0
Longmead - A	1.65	0	0
Longmead - B	2.73	0	0
Longmead - C	3.39	0	0
Longmead - D	1.76	0	0
Longmead - E	1.56	0	0
Longmead - F	1.93	0	0
Longmead - G	1.31	0	0
Longmead - H	3.95	0	0
Longmead - I	0.4	0	0
Longmead - J	3.58	0	0
Main Road STU - Whole Field	5.3	0	0
Oxenhams HS - Whole Field	1.6	0	0
Parkers STU - Whole Field	3.4	0	0
Runston Field - Whole Field	4.7	0	0
Seven View Field - Whole Field	16.6	0	0
Shellys No 1 - Whole Field	5.1	0	0
Shellys No 2 - Whole Field	4.8	0	0
Shepherds - Whole Field	6.58	0	0

# RHIZA

## Nutrient Management Plan Coombe Farms Manure NMP 2021

Shirenewton Road HS - Whole Field	3.8	0	0
Stoney Croft - Whole Field	10.4	0	0
Tank Field - Whole Field	11.8	0	0
Top Field - Whole Field	9.9	0	0
Whiterns Pool Field - Whole Field	7.1	0	0
Woodcocks - Whole Field	5.8	0	0
<b>TOTAL N FROM MANUFACTURED NITROGEN FERTILISER:</b>			<b>0</b>

<b>TOTAL CROP AVAILABLE N FROM APPLICATIONS OF LIVESTOCK MANURE</b>		<b>TOTAL N FROM MANUFACTURED NITROGEN FERTILISER</b>		<b>TOTAL N APPLIED TO CROP TYPE</b>
<b>7523</b>	+	<b>0</b>	=	<b>7523</b>

<b>MAXIMUM LIMIT FOR APPLIED N</b>	<b>TOTAL N APPLIED TO CROP TYPE</b>
<b>53462</b>	<b>7523</b>

# RHIZA

## Nutrient Management Plan Coombe Farms Manure NMP 2021

### Organic Manure Field N limit (250kg N/Ha)

Manure applications to field Artesian Well 11 49 (total area 11.1 Ha)

Spread Timing	Manure Description	Averaged Rate t/Ha or m <sup>3</sup> /Ha	Total N, kg per t/m <sup>3</sup>	Applied N/Ha	Rolling Annual Total N/Ha
A Poultry Manure	Poultry - Broiler/Turkey Litter (60% D.M.)	7.04	30	211.08	211.08

Manure applications to field Artesian Well 2 5 (total area 2.2 Ha)

Spread Timing	Manure Description	Averaged Rate t/Ha or m <sup>3</sup> /Ha	Total N, kg per t/m <sup>3</sup>	Applied N/Ha	Rolling Annual Total N/Ha
A Poultry Manure	Poultry - Broiler/Turkey Litter (60% D.M.)	7.04	30	211.08	211.08

Manure applications to field Artesian Well 4 26 (total area 3.8 Ha)

Spread Timing	Manure Description	Averaged Rate t/Ha or m <sup>3</sup> /Ha	Total N, kg per t/m <sup>3</sup>	Applied N/Ha	Rolling Annual Total N/Ha
A Poultry Manure	Poultry - Broiler/Turkey Litter (60% D.M.)	7.04	30	211.08	211.08

Manure applications to field Back Field (total area 3.7 Ha)

Spread Timing	Manure Description	Averaged Rate t/Ha or m <sup>3</sup> /Ha	Total N, kg per t/m <sup>3</sup>	Applied N/Ha	Rolling Annual Total N/Ha
S Poultry Manure	Poultry - Broiler/Turkey Litter (60% D.M.)	7.04	30	211.08	211.08

Manure applications to field Barley Hill (total area 3.95 Ha)

Spread Timing	Manure Description	Averaged Rate t/Ha or m <sup>3</sup> /Ha	Total N, kg per t/m <sup>3</sup>	Applied N/Ha	Rolling Annual Total N/Ha
A Poultry Manure	Poultry - Broiler/Turkey Litter (60% D.M.)	7.04	30	211.08	211.08



# RHIZA

## Nutrient Management Plan Coombe Farms Manure NMP 2021

Manure applications to field Big Field HS (total area 7.2 Ha)

Spread Timing	Manure Description	Averaged Rate t/Ha or m <sup>3</sup> /Ha	Total N, kg per t/m <sup>3</sup>	Applied N/Ha	Rolling Annual Total N/Ha
S Poultry Manure	Poultry - Broiler/Turkey Litter (60% D.M.)	7.04	30	211.08	211.08

Manure applications to field Chickory HS (total area 3.2 Ha)

Spread Timing	Manure Description	Averaged Rate t/Ha or m <sup>3</sup> /Ha	Total N, kg per t/m <sup>3</sup>	Applied N/Ha	Rolling Annual Total N/Ha
S Poultry Manure	Poultry - Broiler/Turkey Litter (60% D.M.)	7.04	30	211.08	211.08

Manure applications to field Coalpits (total area 12.91 Ha)

Spread Timing	Manure Description	Averaged Rate t/Ha or m <sup>3</sup> /Ha	Total N, kg per t/m <sup>3</sup>	Applied N/Ha	Rolling Annual Total N/Ha
A Poultry Manure	Poultry - Broiler/Turkey Litter (60% D.M.)	7.04	30	211.08	211.08

Manure applications to field Cophill 17 Acres (total area 6.2 Ha)

Spread Timing	Manure Description	Averaged Rate t/Ha or m <sup>3</sup> /Ha	Total N, kg per t/m <sup>3</sup>	Applied N/Ha	Rolling Annual Total N/Ha
A Poultry Manure	Poultry - Broiler/Turkey Litter (60% D.M.)	7.04	30	211.08	211.08

Manure applications to field Cophill 4 Acres (total area 2 Ha)

Spread Timing	Manure Description	Averaged Rate t/Ha or m <sup>3</sup> /Ha	Total N, kg per t/m <sup>3</sup>	Applied N/Ha	Rolling Annual Total N/Ha
S Poultry Manure	Poultry - Broiler/Turkey Litter (60% D.M.)	7.04	30	211.08	211.08

# RHIZA

## Nutrient Management Plan Coombe Farms Manure NMP 2021

---

Manure applications to field Cophill Barnetts (total area 9.1 Ha)

Spread Timing	Manure Description	Averaged Rate t/Ha or m <sup>3</sup> /Ha	Total N, kg per t/m <sup>3</sup>	Applied N/Ha	Rolling Annual Total N/Ha
A Poultry Manure	Poultry - Broiler/Turkey Litter (60% D.M.)	7.04	30	211.08	211.08

Manure applications to field Cophill Big Hospital (total area 7.9 Ha)

Spread Timing	Manure Description	Averaged Rate t/Ha or m <sup>3</sup> /Ha	Total N, kg per t/m <sup>3</sup>	Applied N/Ha	Rolling Annual Total N/Ha
A Poultry Manure	Poultry - Broiler/Turkey Litter (60% D.M.)	7.04	30	211.08	211.08

Manure applications to field Cophill Plough Field (total area 5.6 Ha)

Spread Timing	Manure Description	Averaged Rate t/Ha or m <sup>3</sup> /Ha	Total N, kg per t/m <sup>3</sup>	Applied N/Ha	Rolling Annual Total N/Ha
S Poultry Manure	Poultry - Broiler/Turkey Litter (60% D.M.)	7.04	30	211.08	211.08

Manure applications to field Corner Field (total area 3.92 Ha)

Spread Timing	Manure Description	Averaged Rate t/Ha or m <sup>3</sup> /Ha	Total N, kg per t/m <sup>3</sup>	Applied N/Ha	Rolling Annual Total N/Ha
S Poultry Manure	Poultry - Broiler/Turkey Litter (60% D.M.)	7.04	30	211.08	211.08

Manure applications to field Crossways (total area 24.41 Ha)

Spread Timing	Manure Description	Averaged Rate t/Ha or m <sup>3</sup> /Ha	Total N, kg per t/m <sup>3</sup>	Applied N/Ha	Rolling Annual Total N/Ha
S Poultry Manure	Poultry - Broiler/Turkey Litter (60% D.M.)	7.04	30	211.08	211.08

# RHIZA

## Nutrient Management Plan Coombe Farms Manure NMP 2021

---

Manure applications to field Edwards HS (total area 2.4 Ha)

Spread Timing	Manure Description	Averaged Rate t/Ha or m <sup>3</sup> /Ha	Total N, kg per t/m <sup>3</sup>	Applied N/Ha	Rolling Annual Total N/Ha
A Poultry Manure	Poultry - Broiler/Turkey Litter (60% D.M.)	7.04	30	211.08	211.08

Manure applications to field Gas Station STU (total area 4.6 Ha)

Spread Timing	Manure Description	Averaged Rate t/Ha or m <sup>3</sup> /Ha	Total N, kg per t/m <sup>3</sup>	Applied N/Ha	Rolling Annual Total N/Ha
S Poultry Manure	Poultry - Broiler/Turkey Litter (60% D.M.)	7.04	30	211.08	211.08

Manure applications to field Hens HS (total area 2 Ha)

Spread Timing	Manure Description	Averaged Rate t/Ha or m <sup>3</sup> /Ha	Total N, kg per t/m <sup>3</sup>	Applied N/Ha	Rolling Annual Total N/Ha
S Poultry Manure	Poultry - Broiler/Turkey Litter (60% D.M.)	7.04	30	211.08	211.08

Manure applications to field Italian Ground Pond (total area 3.3 Ha)

Spread Timing	Manure Description	Averaged Rate t/Ha or m <sup>3</sup> /Ha	Total N, kg per t/m <sup>3</sup>	Applied N/Ha	Rolling Annual Total N/Ha
A Poultry Manure	Poultry - Broiler/Turkey Litter (60% D.M.)	7.04	30	211.08	211.08

Manure applications to field Italian Ground Track (total area 6.2 Ha)

Spread Timing	Manure Description	Averaged Rate t/Ha or m <sup>3</sup> /Ha	Total N, kg per t/m <sup>3</sup>	Applied N/Ha	Rolling Annual Total N/Ha
A Poultry Manure	Poultry - Broiler/Turkey Litter (60% D.M.)	7.04	30	211.08	211.08

# RHIZA

## Nutrient Management Plan Coombe Farms Manure NMP 2021

Manure applications to field Longmead (total area 22.27 Ha)

Spread Timing	Manure Description	Averaged Rate t/Ha or m <sup>3</sup> /Ha	Total N, kg per t/m <sup>3</sup>	Applied N/Ha	Rolling Annual Total N/Ha
A Poultry Manure	Poultry - Broiler/Turkey Litter (60% D.M.)	7.04	30	211.08	211.08

Manure applications to field Main Road STU (total area 5.3 Ha)

Spread Timing	Manure Description	Averaged Rate t/Ha or m <sup>3</sup> /Ha	Total N, kg per t/m <sup>3</sup>	Applied N/Ha	Rolling Annual Total N/Ha
A Poultry Manure	Poultry - Broiler/Turkey Litter (60% D.M.)	7.04	30	211.08	211.08

Manure applications to field No 1 Dick the Miller (total area 3.41 Ha)

Spread Timing	Manure Description	Averaged Rate t/Ha or m <sup>3</sup> /Ha	Total N, kg per t/m <sup>3</sup>	Applied N/Ha	Rolling Annual Total N/Ha
S Poultry Manure	Poultry - Broiler/Turkey Litter (60% D.M.)	7.04	30	211.08	211.08

Manure applications to field No 2 Dick the Miller (total area 3.03 Ha)

Spread Timing	Manure Description	Averaged Rate t/Ha or m <sup>3</sup> /Ha	Total N, kg per t/m <sup>3</sup>	Applied N/Ha	Rolling Annual Total N/Ha
S Poultry Manure	Poultry - Broiler/Turkey Litter (60% D.M.)	7.04	30	211.08	211.08

Manure applications to field No 3 Dick the Miller (total area 9.11 Ha)

Spread Timing	Manure Description	Averaged Rate t/Ha or m <sup>3</sup> /Ha	Total N, kg per t/m <sup>3</sup>	Applied N/Ha	Rolling Annual Total N/Ha
S Poultry Manure	Poultry - Broiler/Turkey Litter (60% D.M.)	7.04	30	211.08	211.08

# RHIZA

## Nutrient Management Plan Coombe Farms Manure NMP 2021

---

Manure applications to field Oxenhams HS (total area 1.6 Ha)

Spread Timing	Manure Description	Averaged Rate t/Ha or m <sup>3</sup> /Ha	Total N, kg per t/m <sup>3</sup>	Applied N/Ha	Rolling Annual Total N/Ha
A Poultry Manure	Poultry - Broiler/Turkey Litter (60% D.M.)	7.04	30	211.08	211.08

Manure applications to field Parkers (total area 16.59 Ha)

Spread Timing	Manure Description	Averaged Rate t/Ha or m <sup>3</sup> /Ha	Total N, kg per t/m <sup>3</sup>	Applied N/Ha	Rolling Annual Total N/Ha
S Poultry Manure	Poultry - Broiler/Turkey Litter (60% D.M.)	7.04	30	211.08	211.08

Manure applications to field Parkers STU (total area 3.4 Ha)

Spread Timing	Manure Description	Averaged Rate t/Ha or m <sup>3</sup> /Ha	Total N, kg per t/m <sup>3</sup>	Applied N/Ha	Rolling Annual Total N/Ha
A Poultry Manure	Poultry - Broiler/Turkey Litter (60% D.M.)	7.04	30	211.08	211.08

Manure applications to field Peline (total area 8.46 Ha)

Spread Timing	Manure Description	Averaged Rate t/Ha or m <sup>3</sup> /Ha	Total N, kg per t/m <sup>3</sup>	Applied N/Ha	Rolling Annual Total N/Ha
S Poultry Manure	Poultry - Broiler/Turkey Litter (60% D.M.)	7.04	30	211.08	211.08

Manure applications to field Pond Field (total area 7.8 Ha)

Spread Timing	Manure Description	Averaged Rate t/Ha or m <sup>3</sup> /Ha	Total N, kg per t/m <sup>3</sup>	Applied N/Ha	Rolling Annual Total N/Ha
S Poultry Manure	Poultry - Broiler/Turkey Litter (60% D.M.)	7.04	30	211.08	211.08

# RHIZA

## Nutrient Management Plan Coombe Farms Manure NMP 2021

Manure applications to field Pond Field Small (total area 1.2 Ha)

Spread Timing	Manure Description	Averaged Rate t/Ha or m <sup>3</sup> /Ha	Total N, kg per t/m <sup>3</sup>	Applied N/Ha	Rolling Annual Total N/Ha
S Poultry Manure	Poultry - Broiler/Turkey Litter (60% D.M.)	7.04	30	211.08	211.08

Manure applications to field Runston Field (total area 4.7 Ha)

Spread Timing	Manure Description	Averaged Rate t/Ha or m <sup>3</sup> /Ha	Total N, kg per t/m <sup>3</sup>	Applied N/Ha	Rolling Annual Total N/Ha
A Poultry Manure	Poultry - Broiler/Turkey Litter (60% D.M.)	7.04	30	211.08	211.08

Manure applications to field Seven View Field (total area 16.6 Ha)

Spread Timing	Manure Description	Averaged Rate t/Ha or m <sup>3</sup> /Ha	Total N, kg per t/m <sup>3</sup>	Applied N/Ha	Rolling Annual Total N/Ha
A Poultry Manure	Poultry - Broiler/Turkey Litter (60% D.M.)	7.04	30	211.08	211.08

Manure applications to field Shellys No 1 (total area 5.1 Ha)

Spread Timing	Manure Description	Averaged Rate t/Ha or m <sup>3</sup> /Ha	Total N, kg per t/m <sup>3</sup>	Applied N/Ha	Rolling Annual Total N/Ha
A Poultry Manure	Poultry - Broiler/Turkey Litter (60% D.M.)	7.04	30	211.08	211.08

Manure applications to field Shellys No 2 (total area 4.8 Ha)

Spread Timing	Manure Description	Averaged Rate t/Ha or m <sup>3</sup> /Ha	Total N, kg per t/m <sup>3</sup>	Applied N/Ha	Rolling Annual Total N/Ha
A Poultry Manure	Poultry - Broiler/Turkey Litter (60% D.M.)	7.04	30	211.08	211.08

# RHIZA

## Nutrient Management Plan Coombe Farms Manure NMP 2021

---

Manure applications to field Shepherds (total area 6.58 Ha)

Spread Timing	Manure Description	Averaged Rate t/Ha or m <sup>3</sup> /Ha	Total N, kg per t/m <sup>3</sup>	Applied N/Ha	Rolling Annual Total N/Ha
A Poultry Manure	Poultry - Broiler/Turkey Litter (60% D.M.)	7.04	30	211.08	211.08

Manure applications to field Shirenewton Road HS (total area 3.8 Ha)

Spread Timing	Manure Description	Averaged Rate t/Ha or m <sup>3</sup> /Ha	Total N, kg per t/m <sup>3</sup>	Applied N/Ha	Rolling Annual Total N/Ha
A Poultry Manure	Poultry - Broiler/Turkey Litter (60% D.M.)	7.04	30	211.08	211.08

Manure applications to field Slough HS (total area 3.3 Ha)

Spread Timing	Manure Description	Averaged Rate t/Ha or m <sup>3</sup> /Ha	Total N, kg per t/m <sup>3</sup>	Applied N/Ha	Rolling Annual Total N/Ha
S Poultry Manure	Poultry - Broiler/Turkey Litter (60% D.M.)	7.04	30	211.08	211.08

Manure applications to field Stoney Croft (total area 10.4 Ha)

Spread Timing	Manure Description	Averaged Rate t/Ha or m <sup>3</sup> /Ha	Total N, kg per t/m <sup>3</sup>	Applied N/Ha	Rolling Annual Total N/Ha
A Poultry Manure	Poultry - Broiler/Turkey Litter (60% D.M.)	7.04	30	211.08	211.08

Manure applications to field Tank Field (total area 11.8 Ha)

Spread Timing	Manure Description	Averaged Rate t/Ha or m <sup>3</sup> /Ha	Total N, kg per t/m <sup>3</sup>	Applied N/Ha	Rolling Annual Total N/Ha
A Poultry Manure	Poultry - Broiler/Turkey Litter (60% D.M.)	7.04	30	211.08	211.08

# RHIZA

## Nutrient Management Plan Coombe Farms Manure NMP 2021

Manure applications to field Top Field (total area 9.9 Ha)

Spread Timing	Manure Description	Averaged Rate t/Ha or m <sup>3</sup> /Ha	Total N, kg per t/m <sup>3</sup>	Applied N/Ha	Rolling Annual Total N/Ha
A Poultry Manure	Poultry - Broiler/Turkey Litter (60% D.M.)	7.04	30	211.08	211.08

Manure applications to field Trellenny 1 (total area 3.4 Ha)

Spread Timing	Manure Description	Averaged Rate t/Ha or m <sup>3</sup> /Ha	Total N, kg per t/m <sup>3</sup>	Applied N/Ha	Rolling Annual Total N/Ha
A Poultry Manure	Poultry - Broiler/Turkey Litter (60% D.M.)	7.04	30	211.08	211.08

Manure applications to field Trellenny 2 (total area 5.6 Ha)

Spread Timing	Manure Description	Averaged Rate t/Ha or m <sup>3</sup> /Ha	Total N, kg per t/m <sup>3</sup>	Applied N/Ha	Rolling Annual Total N/Ha
A Poultry Manure	Poultry - Broiler/Turkey Litter (60% D.M.)	7.04	30	211.08	211.08

Manure applications to field Trellenny 3 (total area 6 Ha)

Spread Timing	Manure Description	Averaged Rate t/Ha or m <sup>3</sup> /Ha	Total N, kg per t/m <sup>3</sup>	Applied N/Ha	Rolling Annual Total N/Ha
A Poultry Manure	Poultry - Broiler/Turkey Litter (60% D.M.)	7.04	30	211.08	211.08

Manure applications to field Trellenny 4 (total area 5 Ha)

Spread Timing	Manure Description	Averaged Rate t/Ha or m <sup>3</sup> /Ha	Total N, kg per t/m <sup>3</sup>	Applied N/Ha	Rolling Annual Total N/Ha
A Poultry Manure	Poultry - Broiler/Turkey Litter (60% D.M.)	7.04	30	211.08	211.08



# RHIZA

## Nutrient Management Plan Coombe Farms Manure NMP 2021

Manure applications to field Trellenny 5 (total area 2.4 Ha)

Spread Timing	Manure Description	Averaged Rate t/Ha or m <sup>3</sup> /Ha	Total N, kg per t/m <sup>3</sup>	Applied N/Ha	Rolling Annual Total N/Ha
A Poultry Manure	Poultry - Broiler/Turkey Litter (60% D.M.)	7.04	30	211.08	211.08

Manure applications to field Trellenny 6 (total area 2.9 Ha)

Spread Timing	Manure Description	Averaged Rate t/Ha or m <sup>3</sup> /Ha	Total N, kg per t/m <sup>3</sup>	Applied N/Ha	Rolling Annual Total N/Ha
A Poultry Manure	Poultry - Broiler/Turkey Litter (60% D.M.)	7.04	30	211.08	211.08

Manure applications to field Trellenny 7 (total area 4.9 Ha)

Spread Timing	Manure Description	Averaged Rate t/Ha or m <sup>3</sup> /Ha	Total N, kg per t/m <sup>3</sup>	Applied N/Ha	Rolling Annual Total N/Ha
A Poultry Manure	Poultry - Broiler/Turkey Litter (60% D.M.)	7.04	30	211.08	211.08

Manure applications to field Triangle STU (total area 5.5 Ha)

Spread Timing	Manure Description	Averaged Rate t/Ha or m <sup>3</sup> /Ha	Total N, kg per t/m <sup>3</sup>	Applied N/Ha	Rolling Annual Total N/Ha
S Poultry Manure	Poultry - Broiler/Turkey Litter (60% D.M.)	7.04	30	211.08	211.08

Manure applications to field Under The Wood STU (total area 7.7 Ha)

Spread Timing	Manure Description	Averaged Rate t/Ha or m <sup>3</sup> /Ha	Total N, kg per t/m <sup>3</sup>	Applied N/Ha	Rolling Annual Total N/Ha
S Poultry Manure	Poultry - Broiler/Turkey Litter (60% D.M.)	7.04	30	211.08	211.08

# RHIZA

## Nutrient Management Plan Coombe Farms Manure NMP 2021

---

Manure applications to field Whiterns Pool Field (total area 7.1 Ha)

Spread Timing	Manure Description	Averaged Rate t/Ha or m <sup>3</sup> /Ha	Total N, kg per t/m <sup>3</sup>	Applied N/Ha	Rolling Annual Total N/Ha
A Poultry Manure	Poultry - Broiler/Turkey Litter (60% D.M.)	7.04	30	211.08	211.08

Manure applications to field Woodcocks (total area 5.8 Ha)

Spread Timing	Manure Description	Averaged Rate t/Ha or m <sup>3</sup> /Ha	Total N, kg per t/m <sup>3</sup>	Applied N/Ha	Rolling Annual Total N/Ha
A Poultry Manure	Poultry - Broiler/Turkey Litter (60% D.M.)	7.04	30	211.08	211.08

# RHIZA

## Nutrient Management Plan Coombe Farms Manure NMP 2021

Field Details:		Artesian Well 11 49 - Whole Field									
Crop:		Graham						Area (Ha):		11.1	
Spread Timing		Product			Product Rate/Ha	Nutrient Applied Kg/Ha					Zone Total
						N	P2O5	K2O	MgO	SO3	
A Poultry Manure		Poultry - Broiler/Turkey  Litter (60% D.M.)			8	53	176	114	31	57	79 (T)
Soil Indices	Tested	P	K	Mg	Totals:	53	176	114	31	57	
	Jan 2018	2.8	2.4	4.9	Defra:	220	0	96	0	40	
Notes:											

Field Details:		Artesian Well 2 5 - Whole Field									
Crop:		Graham						Area (Ha):		2.2	
Spread Timing		Product			Product Rate/Ha	Nutrient Applied Kg/Ha					Zone Total
						N	P2O5	K2O	MgO	SO3	
A Poultry Manure		Poultry - Broiler/Turkey Litter (60% D.M.)			8	53	176	127	31	57	16 (T)
Soil Indices	Tested	P	K	Mg	Totals:	53	176	127	31	57	
	Jan 2018	2.5	3.2	5.7	Defra:	220	82	0	0	40	
Notes:											

Field Details:		Artesian Well 4 26 - Whole Field									
Crop:		Momento						Area (Ha):		3.8	
Spread Timing		Product			Product Rate/Ha	Nutrient Applied Kg/Ha					Zone Total
						N	P2O5	K2O	MgO	SO3	
A Poultry Manure		Poultry - Broiler/Turkey  Litter (60% D.M.)			8	53	176	114	31	57	27 (T)
Soil Indices	Tested	P	K	Mg	Totals:	53	176	114	31	57	
	Jan 2018	3.3	2.2	4.0	Defra:	130	0	105	0	40	
Notes:											

# RHIZA

## Nutrient Management Plan Coombe Farms Manure NMP 2021

Field Details:		Back Field - Whole Field									
Crop:		Forage maize						Area (Ha):		3.7	
Spread Timing		Product			Product Rate/Ha	Nutrient Applied Kg/Ha					Zone Total
						N	P2O5	K2O	MgO	SO3	
S Poultry Manure		Poultry - Broiler/Turkey Litter (60% D.M.)			8	64	176	114	31	57	27 (T)
Soil Indices	Tested	P	K	Mg	Totals:	64	176	114	31	57	
	Sep 2017	4.0	2.0	6.8	Defra:	100	0	205	0	0	
Notes:											

Field Details:		Barley Hill - A									
Crop:		Graham						Area (Ha):		1.65	
Spread Timing		Product			Product Rate/Ha	Nutrient Applied Kg/Ha					Zone Total
						N	P2O5	K2O	MgO	SO3	
A Poultry Manure		Poultry - Broiler/Turkey Litter (60% D.M.)			8	53	176	127	31	57	12 (T)
Soil Indices	Tested	P	K	Mg	Totals:	53	176	127	31	57	
	Sep 2019	2.8	3.8	7.0	Defra:	220	0	0	0	40	
Notes:											

Field Details:		Barley Hill - B									
Crop:		Graham						Area (Ha):		2.3	
Spread Timing		Product			Product Rate/Ha	Nutrient Applied Kg/Ha					Zone Total
						N	P2O5	K2O	MgO	SO3	
A Poultry Manure		Poultry - Broiler/Turkey Litter (60% D.M.)			8	53	106	127	31	57	17 (T)
Soil Indices	Tested	P	K	Mg	Totals:	53	106	127	31	57	
	Sep 2019	2.3	3.2	6.7	Defra:	220	88	0	0	40	
Notes:											

# RHIZA

## Nutrient Management Plan Coombe Farms Manure NMP 2021

Field Details:		Big Field HS - Whole Field									
Crop:		IRG New Ley						Area (Ha):		7.2	
Spread Timing		Product			Product Rate/Ha	Nutrient Applied Kg/Ha					Zone Total
						N	P2O5	K2O	MgO	SO3	
S Poultry Manure		Poultry - Broiler/Turkey  Litter (60% D.M.)			8	64	176	114	31	57	51 (T)
Soil Indices	Tested	P	K	Mg	Totals:	64	176	114	31	57	
	Jan 2018	5.3	2.1	3.1	Defra:	400	0	231	0	40	
Notes:											

Field Details:		Chickory HS - Whole Field									
Crop:		IRG New Ley						Area (Ha):		3.2	
Spread Timing		Product			Product Rate/Ha	Nutrient Applied Kg/Ha					Zone Total
						N	P2O5	K2O	MgO	SO3	
S Poultry Manure		Poultry - Broiler/Turkey  Litter (60% D.M.)			8	64	176	114	31	57	23 (T)
Soil Indices	Tested	P	K	Mg	Totals:	64	176	114	31	57	
	Jan 2018	6.5	2.3	3.3	Defra:	400	0	218	0	40	
Notes:											

Field Details:		Coalpits - A									
Crop:		Graham						Area (Ha):		1.83	
Spread Timing		Product			Product Rate/Ha	Nutrient Applied Kg/Ha					Zone Total
						N	P2O5	K2O	MgO	SO3	
A Poultry Manure		Poultry - Broiler/Turkey Litter (60% D.M.)			8	53	106	127	31	57	13 (T)
Soil Indices	Tested	P	K	Mg	Totals:	53	106	127	31	57	
	Mar 2020	1.8	2.6	4.7	Defra:	220	103	0	0	40	
Notes:											

# RHIZA

## Nutrient Management Plan Coombe Farms Manure NMP 2021

Field Details:		Coalpits - B									
Crop:		Graham						Area (Ha):		2.35	
Spread Timing		Product			Product Rate/Ha	Nutrient Applied Kg/Ha					Zone Total
						N	P2O5	K2O	MgO	SO3	
A Poultry Manure		Poultry - Broiler/Turkey Litter (60% D.M.)			8	53	106	127	31	57	17 (T)
Soil Indices	Tested	P	K	Mg	Totals:	53	106	127	31	57	
	Mar 2020	1.6	2.5	4.1	Defra:	220	109	91	0	40	
Notes:											

Field Details:		Coalpits - C									
Crop:		Graham						Area (Ha):		2.14	
Spread Timing		Product			Product Rate/Ha	Nutrient Applied Kg/Ha					Zone Total
						N	P2O5	K2O	MgO	SO3	
A Poultry Manure		Poultry - Broiler/Turkey Litter (60% D.M.)			8	53	106	127	31	57	16 (T)
Soil Indices	Tested	P	K	Mg	Totals:	53	106	127	31	57	
	Mar 2020	2.0	3.0	6.9	Defra:	220	97	0	0	40	
Notes:											

Field Details:		Coalpits - D									
Crop:		Graham						Area (Ha):		2.09	
Spread Timing		Product			Product Rate/Ha	Nutrient Applied Kg/Ha					Zone Total
						N	P2O5	K2O	MgO	SO3	
A Poultry Manure		Poultry - Broiler/Turkey Litter (60% D.M.)			8	53	106	127	31	57	15 (T)
Soil Indices	Tested	P	K	Mg	Totals:	53	106	127	31	57	
	Mar 2020	2.0	3.1	6.4	Defra:	220	97	0	0	40	
Notes:											

# RHIZA

## Nutrient Management Plan Coombe Farms Manure NMP 2021

<b>Field Details:</b>		<b>Coalpits - E</b>									
<b>Crop:</b>		<b>Graham</b>							<b>Area (Ha):</b>		<b>2.31</b>
<b>Spread Timing</b>		<b>Product</b>		<b>Product Rate/Ha</b>	<b>Nutrient Applied Kg/Ha</b>					<b>Zone Total</b>	
					<b>N</b>	<b>P2O5</b>	<b>K2O</b>	<b>MgO</b>	<b>SO3</b>		
A Poultry Manure		Poultry - Broiler/Turkey Litter (60% D.M.)		8	53	176	127	31	57	17 (T)	
<b>Soil Indices</b>	<b>Tested</b>	<b>P</b>	<b>K</b>	<b>Mg</b>	<b>Totals:</b>	53	176	127	31	57	
	Mar 2020	2.6	3.5	7.0	<b>Defra:</b>	220	0	0	0	40	
<b>Notes:</b>											

<b>Field Details:</b>		<b>Coalpits - F</b>									
<b>Crop:</b>		<b>Graham</b>							<b>Area (Ha):</b>		<b>2.19</b>
<b>Spread Timing</b>		<b>Product</b>		<b>Product Rate/Ha</b>	<b>Nutrient Applied Kg/Ha</b>					<b>Zone Total</b>	
					<b>N</b>	<b>P2O5</b>	<b>K2O</b>	<b>MgO</b>	<b>SO3</b>		
A Poultry Manure		Poultry - Broiler/Turkey Litter (60% D.M.)		8	53	176	127	31	57	16 (T)	
<b>Soil Indices</b>	<b>Tested</b>	<b>P</b>	<b>K</b>	<b>Mg</b>	<b>Totals:</b>	53	176	127	31	57	
	Mar 2020	2.6	3.5	7.0	<b>Defra:</b>	220	0	0	0	40	
<b>Notes:</b>											

<b>Field Details:</b>		<b>Cophill 17 Acres - Whole Field</b>									
<b>Crop:</b>		<b>KWS Hawking</b>							<b>Area (Ha):</b>		<b>6.2</b>
<b>Spread Timing</b>		<b>Product</b>		<b>Product Rate/Ha</b>	<b>Nutrient Applied Kg/Ha</b>					<b>Zone Total</b>	
					<b>N</b>	<b>P2O5</b>	<b>K2O</b>	<b>MgO</b>	<b>SO3</b>		
A Poultry Manure		Poultry - Broiler/Turkey Litter (60% D.M.)		8	53	106	127	31	57	44 (T)	
<b>Soil Indices</b>	<b>Tested</b>	<b>P</b>	<b>K</b>	<b>Mg</b>	<b>Totals:</b>	53	106	127	31	57	
	Jan 2018	1.6	2.8	3.8	<b>Defra:</b>	130	109	0	0	40	
<b>Notes:</b>											

# RHIZA

## Nutrient Management Plan Coombe Farms Manure NMP 2021

<b>Field Details:</b>		<b>Cophill 4 Acres - Whole Field</b>									
<b>Crop:</b>		<b>IRG New Ley</b>							<b>Area (Ha):</b>		<b>2</b>
<b>Spread Timing</b>		<b>Product</b>		<b>Product Rate/Ha</b>	<b>Nutrient Applied Kg/Ha</b>					<b>Zone Total</b>	
					<b>N</b>	<b>P2O5</b>	<b>K2O</b>	<b>MgO</b>	<b>SO3</b>		
S Poultry Manure		Poultry - Broiler/Turkey Litter (60% D.M.)		8	64	106	127	31	57	15 (T)	
<b>Soil Indices</b>	<b>Tested</b>	<b>P</b>	<b>K</b>	<b>Mg</b>	<b>Totals:</b>	64	106	127	31	57	
	Jan 2018	2.4	2.8	3.5	<b>Defra:</b>	0	0	0	0	40	
<b>Notes:</b>											

<b>Field Details:</b>		<b>Cophill Barnetts - Whole Field</b>									
<b>Crop:</b>		<b>Graham</b>							<b>Area (Ha):</b>		<b>9.1</b>
<b>Spread Timing</b>		<b>Product</b>		<b>Product Rate/Ha</b>	<b>Nutrient Applied Kg/Ha</b>					<b>Zone Total</b>	
					<b>N</b>	<b>P2O5</b>	<b>K2O</b>	<b>MgO</b>	<b>SO3</b>		
A Poultry Manure		Poultry - Broiler/Turkey Litter (60% D.M.)		8	53	106	127	31	57	65 (T)	
<b>Soil Indices</b>	<b>Tested</b>	<b>P</b>	<b>K</b>	<b>Mg</b>	<b>Totals:</b>	53	106	127	31	57	
	Jan 2018	1.4	2.6	2.7	<b>Defra:</b>	220	115	0	0	40	
<b>Notes:</b>											

<b>Field Details:</b>		<b>Cophill Big Hospital - Whole Field</b>									
<b>Crop:</b>		<b>Graham</b>							<b>Area (Ha):</b>		<b>7.9</b>
<b>Spread Timing</b>		<b>Product</b>		<b>Product Rate/Ha</b>	<b>Nutrient Applied Kg/Ha</b>					<b>Zone Total</b>	
					<b>N</b>	<b>P2O5</b>	<b>K2O</b>	<b>MgO</b>	<b>SO3</b>		
A Poultry Manure		Poultry - Broiler/Turkey Litter (60% D.M.)		8	53	106	114	31	57	56 (T)	
<b>Soil Indices</b>	<b>Tested</b>	<b>P</b>	<b>K</b>	<b>Mg</b>	<b>Totals:</b>	53	106	114	31	57	
	Jan 2018	1.8	2.3	3.4	<b>Defra:</b>	220	103	100	0	40	
<b>Notes:</b>											



# RHIZA

## Nutrient Management Plan Coombe Farms Manure NMP 2021

Field Details:		Cophill Plough Field - Whole Field									
Crop:		Forage maize						Area (Ha):		5.6	
Spread Timing		Product			Product Rate/Ha	Nutrient Applied Kg/Ha					Zone Total
						N	P2O5	K2O	MgO	SO3	
S Poultry Manure		Poultry - Broiler/Turkey  Litter (60% D.M.)			8	64	106	114	31	57	40 (T)
Soil Indices	Tested	P	K	Mg	Totals:	64	106	114	31	57	
	Jan 2018	2.0	2.1	3.7	Defra:	100	77	200	0	0	
Notes:											

Field Details:		Corner Field - A									
Crop:		Forage maize						Area (Ha):		2.9	
Spread Timing		Product			Product Rate/Ha	Nutrient Applied Kg/Ha					Zone Total
						N	P2O5	K2O	MgO	SO3	
S Poultry Manure		Poultry - Broiler/Turkey  Litter (60% D.M.)			8	64	106	127	31	57	21 (T)
Soil Indices	Tested	P	K	Mg	Totals:	64	106	127	31	57	
	Mar 2020	2.4	3.1	5.9	Defra:	100	65	152	0	0	
Notes:											

Field Details:		Corner Field - B									
Crop:		Forage maize						Area (Ha):		1.02	
Spread Timing		Product			Product Rate/Ha	Nutrient Applied Kg/Ha					Zone Total
						N	P2O5	K2O	MgO	SO3	
S Poultry Manure		Poultry - Broiler/Turkey  Litter (60% D.M.)			8	64	176	127	31	57	8 (T)
Soil Indices	Tested	P	K	Mg	Totals:	64	176	127	31	57	
	Mar 2020	3.3	3.0	6.4	Defra:	100	34	157	0	0	
Notes:											

# RHIZA

## Nutrient Management Plan Coombe Farms Manure NMP 2021

Field Details:		Crossways - A									
Crop:		IRG New Ley						Area (Ha):		2.79	
Spread Timing		Product			Product Rate/Ha	Nutrient Applied Kg/Ha					Zone Total
						N	P2O5	K2O	MgO	SO3	
S Poultry Manure		Poultry - Broiler/Turkey Litter (60% D.M.)			8	64	176	127	31	57	20 (T)
Soil Indices	Tested	P	K	Mg	Totals:	64	176	127	31	57	
	Mar 2020	2.8	3.4	6.4	Defra:	400	52	84	0	40	
Notes:											

Field Details:		Crossways - B									
Crop:		IRG New Ley						Area (Ha):		0.53	
Spread Timing		Product			Product Rate/Ha	Nutrient Applied Kg/Ha					Zone Total
						N	P2O5	K2O	MgO	SO3	
S Poultry Manure		Poultry - Broiler/Turkey  Litter (60% D.M.)			8	64	106	127	31	57	4 (T)
Soil Indices	Tested	P	K	Mg	Totals:	64	106	127	31	57	
	Mar 2020	1.5	3.5	5.9	Defra:	400	90	70	0	40	
Notes:											

Field Details:		Crossways - C									
Crop:		IRG New Ley						Area (Ha):		4.1	
Spread Timing		Product			Product Rate/Ha	Nutrient Applied Kg/Ha					Zone Total
						N	P2O5	K2O	MgO	SO3	
S Poultry Manure		Poultry - Broiler/Turkey  Litter (60% D.M.)			8	64	106	127	31	57	29 (T)
Soil Indices	Tested	P	K	Mg	Totals:	64	106	127	31	57	
	Mar 2020	1.6	3.4	7.0	Defra:	400	88	84	0	40	
Notes:											

# RHIZA

## Nutrient Management Plan Coombe Farms Manure NMP 2021

Field Details:		Crossways - D									
Crop:		IRG New Ley						Area (Ha):		0.47	
Spread Timing		Product			Product Rate/Ha	Nutrient Applied Kg/Ha					Zone Total
						N	P2O5	K2O	MgO	SO3	
S Poultry Manure		Poultry - Broiler/Turkey Litter (60% D.M.)			8	64	106	127	31	57	4 (T)
Soil Indices	Tested	P	K	Mg	Totals:	64	106	127	31	57	
	Mar 2020	2.3	3.3	7.0	Defra:	400	70	97	0	40	
Notes:											

Field Details:		Crossways - E									
Crop:		IRG New Ley						Area (Ha):		2.71	
Spread Timing		Product			Product Rate/Ha	Nutrient Applied Kg/Ha					Zone Total
						N	P2O5	K2O	MgO	SO3	
S Poultry Manure		Poultry - Broiler/Turkey Litter (60% D.M.)			8	64	106	127	31	57	20 (T)
Soil Indices	Tested	P	K	Mg	Totals:	64	106	127	31	57	
	Mar 2020	2.0	3.7	7.0	Defra:	400	78	0	0	40	
Notes:											

Field Details:		Crossways - F									
Crop:		IRG New Ley						Area (Ha):		1.49	
Spread Timing		Product			Product Rate/Ha	Nutrient Applied Kg/Ha					Zone Total
						N	P2O5	K2O	MgO	SO3	
S Poultry Manure		Poultry - Broiler/Turkey  Litter (60% D.M.)			8	64	106	127	31	57	11 (T)
Soil Indices	Tested	P	K	Mg	Totals:	64	106	127	31	57	
	Mar 2020	2.3	3.2	6.8	Defra:	400	70	111	0	40	
Notes:											

# RHIZA

## Nutrient Management Plan Coombe Farms Manure NMP 2021

Field Details:		Crossways - G									
Crop:		IRG New Ley						Area (Ha):		1.49	
Spread Timing		Product			Product Rate/Ha	Nutrient Applied Kg/Ha					Zone Total
						N	P2O5	K2O	MgO	SO3	
S Poultry Manure		Poultry - Broiler/Turkey Litter (60% D.M.)			8	64	106	127	31	57	11 (T)
Soil Indices	Tested	P	K	Mg	Totals:	64	106	127	31	57	
	Mar 2020	2.2	2.7	6.0	Defra:	400	73	178	0	40	
Notes:											

Field Details:		Crossways - H									
Crop:		IRG New Ley						Area (Ha):		4.18	
Spread Timing		Product			Product Rate/Ha	Nutrient Applied Kg/Ha					Zone Total
						N	P2O5	K2O	MgO	SO3	
S Poultry Manure		Poultry - Broiler/Turkey Litter (60% D.M.)			8	64	106	127	31	57	30 (T)
Soil Indices	Tested	P	K	Mg	Totals:	64	106	127	31	57	
	Mar 2020	2.2	3.8	5.7	Defra:	400	73	0	0	40	
Notes:											

Field Details:		Crossways - I									
Crop:		IRG New Ley						Area (Ha):		2.09	
Spread Timing		Product			Product Rate/Ha	Nutrient Applied Kg/Ha					Zone Total
						N	P2O5	K2O	MgO	SO3	
S Poultry Manure		Poultry - Broiler/Turkey  Litter (60% D.M.)			8	64	106	127	31	57	15 (T)
Soil Indices	Tested	P	K	Mg	Totals:	64	106	127	31	57	
	Mar 2020	2.2	3.4	6.7	Defra:	400	73	84	0	40	
Notes:											

# RHIZA

## Nutrient Management Plan Coombe Farms Manure NMP 2021

Field Details:		Crossways - J									
Crop:		IRG New Ley						Area (Ha):		4.56	
Spread Timing		Product			Product Rate/Ha	Nutrient Applied Kg/Ha					Zone Total
						N	P2O5	K2O	MgO	SO3	
S Poultry Manure		Poultry - Broiler/Turkey Litter (60% D.M.)			8	64	106	127	31	57	33 (T)
Soil Indices	Tested	P	K	Mg	Totals:	64	106	127	31	57	
	Mar 2020	2.4	3.0	6.6	Defra:	400	68	138	0	40	
Notes:											

Field Details:		Edwards HS - Whole Field									
Crop:		Graham						Area (Ha):		2.4	
Spread Timing		Product			Product Rate/Ha	Nutrient Applied Kg/Ha					Zone Total
						N	P2O5	K2O	MgO	SO3	
A Poultry Manure		Poultry - Broiler/Turkey Litter (60% D.M.)			8	53	176	114	31	57	17 (T)
Soil Indices	Tested	P	K	Mg	Totals:	53	176	114	31	57	
	Sep 2017	4.0	2.1	5.4	Defra:	220	0	109	0	40	
Notes:											

Field Details:		Gas Station STU - Whole Field									
Crop:		Forage maize						Area (Ha):		4.6	
Spread Timing		Product			Product Rate/Ha	Nutrient Applied Kg/Ha					Zone Total
						N	P2O5	K2O	MgO	SO3	
S Poultry Manure		Poultry - Broiler/Turkey  Litter (60% D.M.)			8	64	176	114	31	57	33 (T)
Soil Indices	Tested	P	K	Mg	Totals:	64	176	114	31	57	
	Sep 2017	3.1	2.2	3.6	Defra:	100	41	196	0	0	
Notes:											

# RHIZA

## Nutrient Management Plan Coombe Farms Manure NMP 2021

Field Details:		Herns HS - Whole Field									
Crop:		Forage maize						Area (Ha):		2	
Spread Timing		Product			Product Rate/Ha	Nutrient Applied Kg/Ha					Zone Total
						N	P2O5	K2O	MgO	SO3	
S Poultry Manure		Poultry - Broiler/Turkey Litter (60% D.M.)			8	64	176	114	31	57	15 (T)
Soil Indices	Tested	P	K	Mg	Totals:	64	176	114	31	57	
	Jan 2018	4.2	1.7	3.2	Defra:	100	0	218	0	0	
Notes:											

Field Details:		Italian Ground Pond - Whole Field									
Crop:		Graham						Area (Ha):		3.3	
Spread Timing		Product			Product Rate/Ha	Nutrient Applied Kg/Ha					Zone Total
						N	P2O5	K2O	MgO	SO3	
A Poultry Manure		Poultry - Broiler/Turkey Litter (60% D.M.)			8	53	176	114	31	57	24 (T)
Soil Indices	Tested	P	K	Mg	Totals:	53	176	114	31	57	
	Jan 2018	2.7	2.0	3.7	Defra:	220	0	114	0	40	
Notes:											

Field Details:		Italian Ground Track - Whole Field									
Crop:		Graham						Area (Ha):		6.2	
Spread Timing		Product			Product Rate/Ha	Nutrient Applied Kg/Ha					Zone Total
						N	P2O5	K2O	MgO	SO3	
A Poultry Manure		Poultry - Broiler/Turkey  Litter (60% D.M.)			8	53	176	114	31	57	44 (T)
Soil Indices	Tested	P	K	Mg	Totals:	53	176	114	31	57	
	Jan 2018	2.8	2.3	4.0	Defra:	220	0	100	0	40	
Notes:											

# RHIZA

## Nutrient Management Plan Coombe Farms Manure NMP 2021

Field Details:		Longmead - A									
Crop:		Graham						Area (Ha):		1.65	
Spread Timing		Product			Product Rate/Ha	Nutrient Applied Kg/Ha					Zone Total
						N	P2O5	K2O	MgO	SO3	
A Poultry Manure		Poultry - Broiler/Turkey Litter (60% D.M.)			8	53	176	127	31	57	12 (T)
Soil Indices	Tested	P	K	Mg	Totals:	53	176	127	31	57	
	Mar 2020	3.6	3.0	6.3	Defra:	220	0	0	0	40	
Notes:											

Field Details:		Longmead - B									
Crop:		Graham						Area (Ha):		2.73	
Spread Timing		Product			Product Rate/Ha	Nutrient Applied Kg/Ha					Zone Total
						N	P2O5	K2O	MgO	SO3	
A Poultry Manure		Poultry - Broiler/Turkey Litter (60% D.M.)			8	53	176	114	31	57	20 (T)
Soil Indices	Tested	P	K	Mg	Totals:	53	176	114	31	57	
	Mar 2020	3.3	2.0	5.4	Defra:	220	0	114	0	40	
Notes:											

Field Details:		Longmead - C									
Crop:		Graham						Area (Ha):		3.39	
Spread Timing		Product			Product Rate/Ha	Nutrient Applied Kg/Ha					Zone Total
						N	P2O5	K2O	MgO	SO3	
A Poultry Manure		Poultry - Broiler/Turkey  Litter (60% D.M.)			8	53	176	127	31	57	24 (T)
Soil Indices	Tested	P	K	Mg	Totals:	53	176	127	31	57	
	Mar 2020	3.3	3.1	6.6	Defra:	220	0	0	0	40	
Notes:											

# RHIZA

## Nutrient Management Plan Coombe Farms Manure NMP 2021

Field Details:		Longmead - D									
Crop:		Graham						Area (Ha):		1.76	
Spread Timing		Product			Product Rate/Ha	Nutrient Applied Kg/Ha					Zone Total
						N	P2O5	K2O	MgO	SO3	
A Poultry Manure		Poultry - Broiler/Turkey Litter (60% D.M.)			8	53	176	127	31	57	13 (T)
Soil Indices	Tested	P	K	Mg	Totals:	53	176	127	31	57	
	Mar 2020	3.1	2.5	6.1	Defra:	220	0	91	0	40	
Notes:											

Field Details:		Longmead - E									
Crop:		Graham						Area (Ha):		1.56	
Spread Timing		Product			Product Rate/Ha	Nutrient Applied Kg/Ha					Zone Total
						N	P2O5	K2O	MgO	SO3	
A Poultry Manure		Poultry - Broiler/Turkey Litter (60% D.M.)			8	53	176	127	31	57	11 (T)
Soil Indices	Tested	P	K	Mg	Totals:	53	176	127	31	57	
	Mar 2020	2.9	2.7	7.0	Defra:	220	0	0	0	40	
Notes:											

Field Details:		Longmead - F									
Crop:		Graham						Area (Ha):		1.93	
Spread Timing		Product			Product Rate/Ha	Nutrient Applied Kg/Ha					Zone Total
						N	P2O5	K2O	MgO	SO3	
A Poultry Manure		Poultry - Broiler/Turkey Litter (60% D.M.)			8	53	176	114	31	57	14 (T)
Soil Indices	Tested	P	K	Mg	Totals:	53	176	114	31	57	
	Mar 2020	2.6	2.4	6.1	Defra:	220	0	96	0	40	
Notes:											



# RHIZA

## Nutrient Management Plan Coombe Farms Manure NMP 2021

Field Details:		Longmead - G									
Crop:		Graham						Area (Ha):		1.31	
Spread Timing		Product			Product Rate/Ha	Nutrient Applied Kg/Ha					Zone Total
						N	P2O5	K2O	MgO	SO3	
A Poultry Manure		Poultry - Broiler/Turkey Litter (60% D.M.)			8	53	176	127	31	57	10 (T)
Soil Indices	Tested	P	K	Mg	Totals:	53	176	127	31	57	
	Mar 2020	3.8	2.8	6.7	Defra:	220	0	0	0	40	
Notes:											

Field Details:		Longmead - H									
Crop:		Graham						Area (Ha):		3.95	
Spread Timing		Product			Product Rate/Ha	Nutrient Applied Kg/Ha					Zone Total
						N	P2O5	K2O	MgO	SO3	
A Poultry Manure		Poultry - Broiler/Turkey  Litter (60% D.M.)			8	53	176	114	31	57	28 (T)
Soil Indices	Tested	P	K	Mg	Totals:	53	176	114	31	57	
	Mar 2020	3.3	2.4	6.0	Defra:	220	0	96	0	40	
Notes:											

Field Details:		Longmead - I									
Crop:		Graham						Area (Ha):		0.4	
Spread Timing		Product			Product Rate/Ha	Nutrient Applied Kg/Ha					Zone Total
						N	P2O5	K2O	MgO	SO3	
A Poultry Manure		Poultry - Broiler/Turkey  Litter (60% D.M.)			8	53	106	127	31	57	3 (T)
Soil Indices	Tested	P	K	Mg	Totals:	53	106	127	31	57	
	Mar 2020	1.8	3.1	6.8	Defra:	220	103	0	0	40	
Notes:											

# RHIZA

## Nutrient Management Plan Coombe Farms Manure NMP 2021

Field Details:		Longmead - J									
Crop:		Graham						Area (Ha):		3.58	
Spread Timing		Product			Product Rate/Ha	Nutrient Applied Kg/Ha					Zone Total
						N	P2O5	K2O	MgO	SO3	
A Poultry Manure		Poultry - Broiler/Turkey Litter (60% D.M.)			8	53	176	127	31	57	26 (T)
Soil Indices	Tested	P	K	Mg	Totals:	53	176	127	31	57	
	Mar 2020	2.5	2.8	6.6	Defra:	220	82	0	0	40	
Notes:											

Field Details:		Main Road STU - Whole Field									
Crop:		Graham						Area (Ha):		5.3	
Spread Timing		Product			Product Rate/Ha	Nutrient Applied Kg/Ha					Zone Total
						N	P2O5	K2O	MgO	SO3	
A Poultry Manure		Poultry - Broiler/Turkey  Litter (60% D.M.)			8	53	176	127	31	57	38 (T)
Soil Indices	Tested	P	K	Mg	Totals:	53	176	127	31	57	
	Jan 2018	2.8	2.5	4.8	Defra:	220	0	91	0	40	
Notes:											

Field Details:		No 1 Dick the Miller - A									
Crop:		Forage maize						Area (Ha):		2.31	
Spread Timing		Product			Product Rate/Ha	Nutrient Applied Kg/Ha					Zone Total
						N	P2O5	K2O	MgO	SO3	
S Poultry Manure		Poultry - Broiler/Turkey  Litter (60% D.M.)			8	64	176	114	31	57	17 (T)
Soil Indices	Tested	P	K	Mg	Totals:	64	176	114	31	57	
	Mar 2020	2.8	2.3	4.4	Defra:	100	52	191	0	0	
Notes:											

# RHIZA

## Nutrient Management Plan Coombe Farms Manure NMP 2021

Field Details:		No 1 Dick the Miller - B									
Crop:		Forage maize						Area (Ha):		1.11	
Spread Timing		Product			Product Rate/Ha	Nutrient Applied Kg/Ha					Zone Total
						N	P2O5	K2O	MgO	SO3	
S Poultry Manure		Poultry - Broiler/Turkey  Litter (60% D.M.)			8	64	176	127	31	57	8 (T)
Soil Indices	Tested	P	K	Mg	Totals:	64	176	127	31	57	
	Mar 2020	3.0	3.8	3.5	Defra:	100	45	0	0	0	
Notes:											

Field Details:		No 2 Dick the Miller - A									
Crop:		Forage maize						Area (Ha):		3.03	
Spread Timing		Product			Product Rate/Ha	Nutrient Applied Kg/Ha					Zone Total
						N	P2O5	K2O	MgO	SO3	
S Poultry Manure		Poultry - Broiler/Turkey Litter (60% D.M.)			8	64	106	127	31	57	22 (T)
Soil Indices	Tested	P	K	Mg	Totals:	64	106	127	31	57	
	Mar 2020	1.8	3.1	6.2	Defra:	100	83	152	0	0	
Notes:											

Field Details:		No 3 Dick the Miller - A									
Crop:		Forage maize						Area (Ha):		1.98	
Spread Timing		Product			Product Rate/Ha	Nutrient Applied Kg/Ha					Zone Total
						N	P2O5	K2O	MgO	SO3	
S Poultry Manure		Poultry - Broiler/Turkey  Litter (60% D.M.)			8	64	106	127	31	57	14 (T)
Soil Indices	Tested	P	K	Mg	Totals:	64	106	127	31	57	
	Mar 2020	2.3	3.6	4.8	Defra:	100	68	0	0	0	
Notes:											

# RHIZA

## Nutrient Management Plan Coombe Farms Manure NMP 2021

Field Details:		No 3 Dick the Miller - B									
Crop:		Forage maize						Area (Ha):		1.87	
Spread Timing		Product			Product Rate/Ha	Nutrient Applied Kg/Ha					Zone Total
						N	P2O5	K2O	MgO	SO3	
S Poultry Manure		Poultry - Broiler/Turkey Litter (60% D.M.)			8	64	106	127	31	57	14 (T)
Soil Indices	Tested	P	K	Mg	Totals:	64	106	127	31	57	
	Mar 2020	1.8	3.4	3.1	Defra:	100	83	137	0	0	
Notes:											

Field Details:		No 3 Dick the Miller - C									
Crop:		Forage maize						Area (Ha):		2.62	
Spread Timing		Product			Product Rate/Ha	Nutrient Applied Kg/Ha					Zone Total
						N	P2O5	K2O	MgO	SO3	
S Poultry Manure		Poultry - Broiler/Turkey  Litter (60% D.M.)			8	64	106	127	31	57	19 (T)
Soil Indices	Tested	P	K	Mg	Totals:	64	106	127	31	57	
	Mar 2020	1.4	4.0	4.8	Defra:	100	95	0	0	0	
Notes:											

Field Details:		No 3 Dick the Miller - D									
Crop:		Forage maize						Area (Ha):		2.63	
Spread Timing		Product			Product Rate/Ha	Nutrient Applied Kg/Ha					Zone Total
						N	P2O5	K2O	MgO	SO3	
S Poultry Manure		Poultry - Broiler/Turkey  Litter (60% D.M.)			8	64	106	127	31	57	19 (T)
Soil Indices	Tested	P	K	Mg	Totals:	64	106	127	31	57	
	Mar 2020	2.0	3.5	5.0	Defra:	100	77	132	0	0	
Notes:											

# RHIZA

## Nutrient Management Plan Coombe Farms Manure NMP 2021

Field Details:		Oxenhams HS - Whole Field									
Crop:		Graham						Area (Ha):		1.6	
Spread Timing		Product			Product Rate/Ha	Nutrient Applied Kg/Ha					Zone Total
						N	P2O5	K2O	MgO	SO3	
A Poultry Manure		Poultry - Broiler/Turkey Litter (60% D.M.)			8	53	176	127	31	57	12 (T)
Soil Indices	Tested	P	K	Mg	Totals:	53	176	127	31	57	
	Sep 2017	4.4	2.6	4.1	Defra:	220	0	0	0	40	
Notes:											

Field Details:		Parkers - A									
Crop:		Forage maize						Area (Ha):		1.94	
Spread Timing		Product			Product Rate/Ha	Nutrient Applied Kg/Ha					Zone Total
						N	P2O5	K2O	MgO	SO3	
S Poultry Manure		Poultry - Broiler/Turkey Litter (60% D.M.)			8	64	176	127	31	57	14 (T)
Soil Indices	Tested	P	K	Mg	Totals:	64	176	127	31	57	
	Mar 2020	3.6	3.2	6.0	Defra:	100	0	147	0	0	
Notes:											

Field Details:		Parkers - B									
Crop:		Forage maize						Area (Ha):		2.19	
Spread Timing		Product			Product Rate/Ha	Nutrient Applied Kg/Ha					Zone Total
						N	P2O5	K2O	MgO	SO3	
S Poultry Manure		Poultry - Broiler/Turkey  Litter (60% D.M.)			8	64	176	127	31	57	16 (T)
Soil Indices	Tested	P	K	Mg	Totals:	64	176	127	31	57	
	Mar 2020	4.2	3.2	6.0	Defra:	100	0	147	0	0	
Notes:											

# RHIZA

## Nutrient Management Plan Coombe Farms Manure NMP 2021

Field Details:		Parkers - C									
Crop:		Forage maize						Area (Ha):		2.93	
Spread Timing		Product			Product Rate/Ha	Nutrient Applied Kg/Ha					Zone Total
						N	P2O5	K2O	MgO	SO3	
S Poultry Manure		Poultry - Broiler/Turkey Litter (60% D.M.)			8	64	176	127	31	57	21 (T)
Soil Indices	Tested	P	K	Mg	Totals:	64	176	127	31	57	
	Mar 2020	2.9	3.1	6.0	Defra:	100	48	152	0	0	
Notes:											

Field Details:		Parkers - D									
Crop:		Forage maize						Area (Ha):		2.48	
Spread Timing		Product			Product Rate/Ha	Nutrient Applied Kg/Ha					Zone Total
						N	P2O5	K2O	MgO	SO3	
S Poultry Manure		Poultry - Broiler/Turkey Litter (60% D.M.)			8	64	176	127	31	57	18 (T)
Soil Indices	Tested	P	K	Mg	Totals:	64	176	127	31	57	
	Mar 2020	3.0	3.1	5.4	Defra:	100	45	152	0	0	
Notes:											

Field Details:		Parkers - E									
Crop:		Forage maize						Area (Ha):		1.93	
Spread Timing		Product			Product Rate/Ha	Nutrient Applied Kg/Ha					Zone Total
						N	P2O5	K2O	MgO	SO3	
S Poultry Manure		Poultry - Broiler/Turkey Litter (60% D.M.)			8	64	176	127	31	57	14 (T)
Soil Indices	Tested	P	K	Mg	Totals:	64	176	127	31	57	
	Mar 2020	2.5	3.2	5.9	Defra:	100	62	147	0	0	
Notes:											

# RHIZA

## Nutrient Management Plan Coombe Farms Manure NMP 2021

Field Details:		Parkers - F									
Crop:		Forage maize						Area (Ha):		2.04	
Spread Timing		Product			Product Rate/Ha	Nutrient Applied Kg/Ha					Zone Total
						N	P2O5	K2O	MgO	SO3	
S Poultry Manure		Poultry - Broiler/Turkey Litter (60% D.M.)			8	64	176	127	31	57	15 (T)
Soil Indices	Tested	P	K	Mg	Totals:	64	176	127	31	57	
	Mar 2020	3.0	3.2	6.0	Defra:	100	45	147	0	0	
Notes:											

Field Details:		Parkers - G									
Crop:		Forage maize						Area (Ha):		1.3	
Spread Timing		Product			Product Rate/Ha	Nutrient Applied Kg/Ha					Zone Total
						N	P2O5	K2O	MgO	SO3	
S Poultry Manure		Poultry - Broiler/Turkey Litter (60% D.M.)			8	64	176	127	31	57	10 (T)
Soil Indices	Tested	P	K	Mg	Totals:	64	176	127	31	57	
	Mar 2020	3.0	3.3	4.4	Defra:	100	45	142	0	0	
Notes:											

Field Details:		Parkers - H									
Crop:		Forage maize						Area (Ha):		1.79	
Spread Timing		Product			Product Rate/Ha	Nutrient Applied Kg/Ha					Zone Total
						N	P2O5	K2O	MgO	SO3	
S Poultry Manure		Poultry - Broiler/Turkey  Litter (60% D.M.)			8	64	176	127	31	57	13 (T)
Soil Indices	Tested	P	K	Mg	Totals:	64	176	127	31	57	
	Mar 2020	3.0	3.5	3.9	Defra:	100	45	132	0	0	
Notes:											

# RHIZA

## Nutrient Management Plan Coombe Farms Manure NMP 2021

<b>Field Details:</b>		<b>Parkers STU - Whole Field</b>									
<b>Crop:</b>		<b>Graham</b>							<b>Area (Ha):</b>		<b>3.4</b>
<b>Spread Timing</b>		<b>Product</b>		<b>Product Rate/Ha</b>	<b>Nutrient Applied Kg/Ha</b>					<b>Zone Total</b>	
					<b>N</b>	<b>P2O5</b>	<b>K2O</b>	<b>MgO</b>	<b>SO3</b>		
A Poultry Manure		Poultry - Broiler/Turkey Litter (60% D.M.)		8	53	176	127	31	57	24 (T)	
<b>Soil Indices</b>	<b>Tested</b>	<b>P</b>	<b>K</b>	<b>Mg</b>	<b>Totals:</b>	53	176	127	31	57	
	Sep 2017	3.0	2.8	4.0	<b>Defra:</b>	220	0	0	0	40	
<b>Notes:</b>											

<b>Field Details:</b>		<b>Penline - A</b>									
<b>Crop:</b>		<b>Forage maize</b>							<b>Area (Ha):</b>		<b>1.93</b>
<b>Spread Timing</b>		<b>Product</b>		<b>Product Rate/Ha</b>	<b>Nutrient Applied Kg/Ha</b>					<b>Zone Total</b>	
					<b>N</b>	<b>P2O5</b>	<b>K2O</b>	<b>MgO</b>	<b>SO3</b>		
S Poultry Manure		Poultry - Broiler/Turkey Litter (60% D.M.)		8	64	106	127	31	57	14 (T)	
<b>Soil Indices</b>	<b>Tested</b>	<b>P</b>	<b>K</b>	<b>Mg</b>	<b>Totals:</b>	64	106	127	31	57	
	Sep 2019	2.2	4.3	6.3	<b>Defra:</b>	100	71	0	0	0	
<b>Notes:</b>											

<b>Field Details:</b>		<b>Penline - B</b>									
<b>Crop:</b>		<b>Forage maize</b>							<b>Area (Ha):</b>		<b>2.99</b>
<b>Spread Timing</b>		<b>Product</b>		<b>Product Rate/Ha</b>	<b>Nutrient Applied Kg/Ha</b>					<b>Zone Total</b>	
					<b>N</b>	<b>P2O5</b>	<b>K2O</b>	<b>MgO</b>	<b>SO3</b>		
S Poultry Manure		Poultry - Broiler/Turkey Litter (60% D.M.)		8	64	106	127	31	57	22 (T)	
<b>Soil Indices</b>	<b>Tested</b>	<b>P</b>	<b>K</b>	<b>Mg</b>	<b>Totals:</b>	64	106	127	31	57	
	Sep 2019	1.2	4.6	7.0	<b>Defra:</b>	100	101	0	0	0	
<b>Notes:</b>											



# RHIZA

## Nutrient Management Plan Coombe Farms Manure NMP 2021

Field Details:		Penline - C									
Crop:		Forage maize						Area (Ha):		1.93	
Spread Timing		Product			Product Rate/Ha	Nutrient Applied Kg/Ha					Zone Total
						N	P2O5	K2O	MgO	SO3	
S Poultry Manure		Poultry - Broiler/Turkey Litter (60% D.M.)			8	64	106	127	31	57	14 (T)
Soil Indices	Tested	P	K	Mg	Totals:	64	106	127	31	57	
	Sep 2019	1.6	5.3	7.0	Defra:	100	89	0	0	0	
Notes:											

Field Details:		Penline - D									
Crop:		Forage maize						Area (Ha):		1.6	
Spread Timing		Product			Product Rate/Ha	Nutrient Applied Kg/Ha					Zone Total
						N	P2O5	K2O	MgO	SO3	
S Poultry Manure		Poultry - Broiler/Turkey  Litter (60% D.M.)			8	64	106	127	31	57	12 (T)
Soil Indices	Tested	P	K	Mg	Totals:	64	106	127	31	57	
	Sep 2019	1.5	4.3	7.0	Defra:	100	92	0	0	0	
Notes:											

Field Details:		Pond Field - Whole Field									
Crop:		Fieldstar						Area (Ha):		7.8	
Spread Timing		Product			Product Rate/Ha	Nutrient Applied Kg/Ha					Zone Total
						N	P2O5	K2O	MgO	SO3	
S Poultry Manure		Poultry - Broiler/Turkey  Litter (60% D.M.)			8	64	176	114	31	57	55 (T)
Soil Indices	Tested	P	K	Mg	Totals:	64	176	114	31	57	
	Sep 2017	2.8	1.9	2.9	Defra:	100	52	209	0	0	
Notes:											

# RHIZA

## Nutrient Management Plan Coombe Farms Manure NMP 2021

Field Details:		Pond Field Small - Whole Field									
Crop:		IRG New Ley						Area (Ha):		1.2	
Spread Timing		Product			Product Rate/Ha	Nutrient Applied Kg/Ha					Zone Total
						N	P2O5	K2O	MgO	SO3	
S Poultry Manure		Poultry - Broiler/Turkey  Litter (60% D.M.)			8	64	176	114	31	57	9 (T)
Soil Indices	Tested	P	K	Mg	Totals:	64	176	114	31	57	
	Sep 2017	3.0	2.4	3.6	Defra:	0	0	0	0	40	
Notes:											

Field Details:		Runston Field - Whole Field									
Crop:		Graham						Area (Ha):		4.7	
Spread Timing		Product			Product Rate/Ha	Nutrient Applied Kg/Ha					Zone Total
						N	P2O5	K2O	MgO	SO3	
A Poultry Manure		Poultry - Broiler/Turkey  Litter (60% D.M.)			8	53	106	114	31	57	34 (T)
Soil Indices	Tested	P	K	Mg	Totals:	53	106	114	31	57	
	Sep 2017	0.9	2.0	6.4	Defra:	220	130	114	0	40	
Notes:											

Field Details:		Seven View Field - Whole Field									
Crop:		RGT Wolverine						Area (Ha):		16.6	
Spread Timing		Product			Product Rate/Ha	Nutrient Applied Kg/Ha					Zone Total
						N	P2O5	K2O	MgO	SO3	
A Poultry Manure		Poultry - Broiler/Turkey  Litter (60% D.M.)			8	53	106	114	31	57	117 (T)
Soil Indices	Tested	P	K	Mg	Totals:	53	106	114	31	57	
	Sep 2017	2.1	2.4	7.0	Defra:	220	94	96	0	40	
Notes:											

# RHIZA

## Nutrient Management Plan Coombe Farms Manure NMP 2021

Field Details:		Shellys No 1 - Whole Field									
Crop:		Graham						Area (Ha):		5.1	
Spread Timing		Product			Product Rate/Ha	Nutrient Applied Kg/Ha					Zone Total
						N	P2O5	K2O	MgO	SO3	
A Poultry Manure		Poultry - Broiler/Turkey Litter (60% D.M.)			8	53	176	127	31	57	36 (T)
Soil Indices	Tested	P	K	Mg	Totals:	53	176	127	31	57	
	Sep 2017	2.9	2.8	7.0	Defra:	220	0	0	0	40	
Notes:											

Field Details:		Shellys No 2 - Whole Field									
Crop:		Graham						Area (Ha):		4.8	
Spread Timing		Product			Product Rate/Ha	Nutrient Applied Kg/Ha					Zone Total
						N	P2O5	K2O	MgO	SO3	
A Poultry Manure		Poultry - Broiler/Turkey Litter (60% D.M.)			8	53	106	114	31	57	34 (T)
Soil Indices	Tested	P	K	Mg	Totals:	53	106	114	31	57	
	Sep 2017	0.9	2.3	6.7	Defra:	220	130	100	0	40	
Notes:											

Field Details:		Shepherds - Whole Field									
Crop:		Graham						Area (Ha):		6.58	
Spread Timing		Product			Product Rate/Ha	Nutrient Applied Kg/Ha					Zone Total
						N	P2O5	K2O	MgO	SO3	
A Poultry Manure		Poultry - Broiler/Turkey  Litter (60% D.M.)			8	53	106	127	31	57	47 (T)
Soil Indices	Tested	P	K	Mg	Totals:	53	106	127	31	57	
	Mar 2020	2.1	2.6	4.2	Defra:	220	94	0	0	40	
Notes:											

# RHIZA

## Nutrient Management Plan Coombe Farms Manure NMP 2021

Field Details:		Shirenewton Road HS - Whole Field									
Crop:		Graham						Area (Ha):		3.8	
Spread Timing		Product			Product Rate/Ha	Nutrient Applied Kg/Ha					Zone Total
						N	P2O5	K2O	MgO	SO3	
A Poultry Manure		Poultry - Broiler/Turkey Litter (60% D.M.)			8	53	176	127	31	57	27 (T)
Soil Indices	Tested	P	K	Mg	Totals:	53	176	127	31	57	
	Sep 2017	5.3	2.5	5.4	Defra:	220	0	91	0	40	
Notes:											

Field Details:		Slough HS - Whole Field									
Crop:		Forage maize						Area (Ha):		3.3	
Spread Timing		Product			Product Rate/Ha	Nutrient Applied Kg/Ha					Zone Total
						N	P2O5	K2O	MgO	SO3	
S Poultry Manure		Poultry - Broiler/Turkey Litter (60% D.M.)			8	64	176	114	31	57	24 (T)
Soil Indices	Tested	P	K	Mg	Totals:	64	176	114	31	57	
	Jan 2018	4.0	2.2	3.8	Defra:	100	0	196	0	0	
Notes:											

Field Details:		Stoney Croft - Whole Field									
Crop:		KWS Extase						Area (Ha):		10.4	
Spread Timing		Product			Product Rate/Ha	Nutrient Applied Kg/Ha					Zone Total
						N	P2O5	K2O	MgO	SO3	
A Poultry Manure		Poultry - Broiler/Turkey  Litter (60% D.M.)			8	53	176	127	31	57	74 (T)
Soil Indices	Tested	P	K	Mg	Totals:	53	176	127	31	57	
	Sep 2017	3.1	3.1	5.7	Defra:	220	0	0	0	40	
Notes:											

# RHIZA

## Nutrient Management Plan Coombe Farms Manure NMP 2021

Field Details:		Tank Field - Whole Field									
Crop:		Wheat (winter, milling)						Area (Ha):		11.8	
Spread Timing		Product			Product Rate/Ha	Nutrient Applied Kg/Ha					Zone Total
						N	P2O5	K2O	MgO	SO3	
A Poultry Manure		Poultry - Broiler/Turkey  Litter (60% D.M.)			8	53	176	127	31	57	84 (T)
Soil Indices	Tested	P	K	Mg	Totals:	53	176	127	31	57	
	Sep 2017	2.6	3.1	7.0	Defra:	220	0	0	0	40	
Notes:											

Field Details:		Top Field - Whole Field									
Crop:		Graham						Area (Ha):		9.9	
Spread Timing		Product			Product Rate/Ha	Nutrient Applied Kg/Ha					Zone Total
						N	P2O5	K2O	MgO	SO3	
A Poultry Manure		Poultry - Broiler/Turkey  Litter (60% D.M.)			8	53	176	114	31	57	70 (T)
Soil Indices	Tested	P	K	Mg	Totals:	53	176	114	31	57	
	Sep 2017	2.8	2.0	3.0	Defra:	220	0	114	0	40	
Notes:											

Field Details:		Trellenny 1 - Whole Field									
Crop:		KWS Hawking						Area (Ha):		3.4	
Spread Timing		Product			Product Rate/Ha	Nutrient Applied Kg/Ha					Zone Total
						N	P2O5	K2O	MgO	SO3	
A Poultry Manure		Poultry - Broiler/Turkey  Litter (60% D.M.)			8	53	106	114	31	57	24 (T)
Soil Indices	Tested	P	K	Mg	Totals:	53	106	114	31	57	
	Sep 2017	1.4	2.2	4.6	Defra:	130	115	105	0	40	
Notes:											

# RHIZA

## Nutrient Management Plan Coombe Farms Manure NMP 2021

Field Details:		Trellenny 2 - Whole Field									
Crop:		KWS Hawking						Area (Ha):		5.6	
Spread Timing		Product			Product Rate/Ha	Nutrient Applied Kg/Ha					Zone Total
						N	P2O5	K2O	MgO	SO3	
A Poultry Manure		Poultry - Broiler/Turkey  Litter (60% D.M.)			8	53	106	114	31	57	40 (T)
Soil Indices	Tested	P	K	Mg	Totals:	53	106	114	31	57	
	Sep 2017	1.4	2.4	6.0	Defra:	130	115	96	0	40	
Notes:											

Field Details:		Trellenny 3 - Whole Field									
Crop:		KWS Hawking						Area (Ha):		6	
Spread Timing		Product			Product Rate/Ha	Nutrient Applied Kg/Ha					Zone Total
						N	P2O5	K2O	MgO	SO3	
A Poultry Manure		Poultry - Broiler/Turkey Litter (60% D.M.)			8	53	106	114	31	57	43 (T)
Soil Indices	Tested	P	K	Mg	Totals:	53	106	114	31	57	
	Sep 2017	2.3	1.8	6.1	Defra:	130	88	123	0	40	
Notes:											

Field Details:		Trellenny 4 - Whole Field									
Crop:		KWS Hawking						Area (Ha):		5	
Spread Timing		Product			Product Rate/Ha	Nutrient Applied Kg/Ha					Zone Total
						N	P2O5	K2O	MgO	SO3	
A Poultry Manure		Poultry - Broiler/Turkey  Litter (60% D.M.)			8	53	176	114	31	57	36 (T)
Soil Indices	Tested	P	K	Mg	Totals:	53	176	114	31	57	
	Sep 2017	2.9	2.3	3.3	Defra:	130	0	100	0	40	
Notes:											

# RHIZA

## Nutrient Management Plan Coombe Farms Manure NMP 2021

Field Details:		Trellenny 5 - Whole Field									
Crop:		KWS Hawking						Area (Ha):		2.4	
Spread Timing		Product			Product Rate/Ha	Nutrient Applied Kg/Ha					Zone Total
						N	P2O5	K2O	MgO	SO3	
A Poultry Manure		Poultry - Broiler/Turkey Litter (60% D.M.)			8	53	176	114	31	57	17 (T)
Soil Indices	Tested	P	K	Mg	Totals:	53	176	114	31	57	
	Sep 2017	2.9	2.1	4.0	Defra:	130	0	109	0	40	
Notes:											

Field Details:		Trellenny 6 - Whole Field									
Crop:		KWS Hawking						Area (Ha):		2.9	
Spread Timing		Product			Product Rate/Ha	Nutrient Applied Kg/Ha					Zone Total
						N	P2O5	K2O	MgO	SO3	
A Poultry Manure		Poultry - Broiler/Turkey  Litter (60% D.M.)			8	53	176	114	31	57	21 (T)
Soil Indices	Tested	P	K	Mg	Totals:	53	176	114	31	57	
	Sep 2017	3.0	2.3	3.7	Defra:	130	0	100	0	40	
Notes:											

Field Details:		Trellenny 7 - Whole Field									
Crop:		KWS Hawking						Area (Ha):		4.9	
Spread Timing		Product			Product Rate/Ha	Nutrient Applied Kg/Ha					Zone Total
						N	P2O5	K2O	MgO	SO3	
A Poultry Manure		Poultry - Broiler/Turkey  Litter (60% D.M.)			8	53	176	114	31	57	35 (T)
Soil Indices	Tested	P	K	Mg	Totals:	53	176	114	31	57	
	Sep 2017	3.1	1.9	3.4	Defra:	130	0	118	0	40	
Notes:											

# RHIZA

## Nutrient Management Plan Coombe Farms Manure NMP 2021

Field Details:		Triangle STU - Whole Field									
Crop:		Forage maize						Area (Ha):		5.5	
Spread Timing		Product			Product Rate/Ha	Nutrient Applied Kg/Ha					Zone Total
						N	P2O5	K2O	MgO	SO3	
S Poultry Manure		Poultry - Broiler/Turkey  Litter (60% D.M.)			8	64	176	114	31	57	39 (T)
Soil Indices	Tested	P	K	Mg	Totals:	64	176	114	31	57	
	Sep 2017	4.1	2.4	3.7	Defra:	100	0	187	0	0	
Notes:											

Field Details:		Under The Wood STU - Whole Field									
Crop:		Forage maize						Area (Ha):		7.7	
Spread Timing		Product			Product Rate/Ha	Nutrient Applied Kg/Ha					Zone Total
						N	P2O5	K2O	MgO	SO3	
S Poultry Manure		Poultry - Broiler/Turkey  Litter (60% D.M.)			8	64	176	127	31	57	55 (T)
Soil Indices	Tested	P	K	Mg	Totals:	64	176	127	31	57	
	Sep 2017	3.3	2.7	6.6	Defra:	100	34	172	0	0	
Notes:											

Field Details:		Whiterns Pool Field - Whole Field									
Crop:		Graham						Area (Ha):		7.1	
Spread Timing		Product			Product Rate/Ha	Nutrient Applied Kg/Ha					Zone Total
						N	P2O5	K2O	MgO	SO3	
A Poultry Manure		Poultry - Broiler/Turkey  Litter (60% D.M.)			8	53	106	114	31	57	50 (T)
Soil Indices	Tested	P	K	Mg	Totals:	53	106	114	31	57	
	Sep 2017	1.0	1.6	6.3	Defra:	220	127	132	0	40	
Notes:											



# RHIZA

## Nutrient Management Plan Coombe Farms Manure NMP 2021

<b>Field Details:</b>		<b>Woodcocks - Whole Field</b>									
<b>Crop:</b>		<b>Graham</b>							<b>Area (Ha):</b>		<b>5.8</b>
<b>Spread Timing</b>		<b>Product</b>		<b>Product Rate/Ha</b>	<b>Nutrient Applied Kg/Ha</b>					<b>Zone Total</b>	
					<b>N</b>	<b>P2O5</b>	<b>K2O</b>	<b>MgO</b>	<b>SO3</b>		
A Poultry Manure		Poultry - Broiler/Turkey Litter (60% D.M.)		8	53	106	114	31	57	41 (T)	
<b>Soil Indices</b>	<b>Tested</b>	<b>P</b>	<b>K</b>	<b>Mg</b>	<b>Totals:</b>	53	106	114	31	57	
	Jan 2018	1.8	2.3	7.0	<b>Defra:</b>	220	103	100	0	40	
<b>Notes:</b>											

**Product**  
**Timing**

**Poultry - Broiler/Turkey Litter (60% D.M.)**

**A Poultry Manure**

Field Name	Tonnes Required	Spread Date	Tonnes Applied	Notes / Weather
Artesian Well 11 49	78.1			
Artesian Well 2 5	15.5			
Artesian Well 4 26	26.7			
Barley Hill	27.8			
Coalpits	90.8			
Cophill 17 Acres	43.6			
Cophill Barnetts	64			
Cophill Big Hospital	55.6			
Edwards HS	16.9			
Italian Ground Pond	23.2			
Italian Ground Track	43.6			
Longmead	156.7			

**Product**  
**Timing**

**Poultry - Broiler/Turkey Litter (60% D.M.)**

**A Poultry Manure**

Field Name	Tonnes Required	Spread Date	Tonnes Applied	Notes / Weather
Main Road STU	37.3			
Oxenhams HS	11.3			
Parkers STU	23.9			
Runston Field	33.1			
Seven View Field	116.8			
Shellys No 1	35.9			
Shellys No 2	33.8			
Shepherds	46.3			
Shirenewton Road HS	26.7			
Stoney Croft	73.2			
Tank Field	83			
Top Field	69.7			

**Product**  
**Timing**

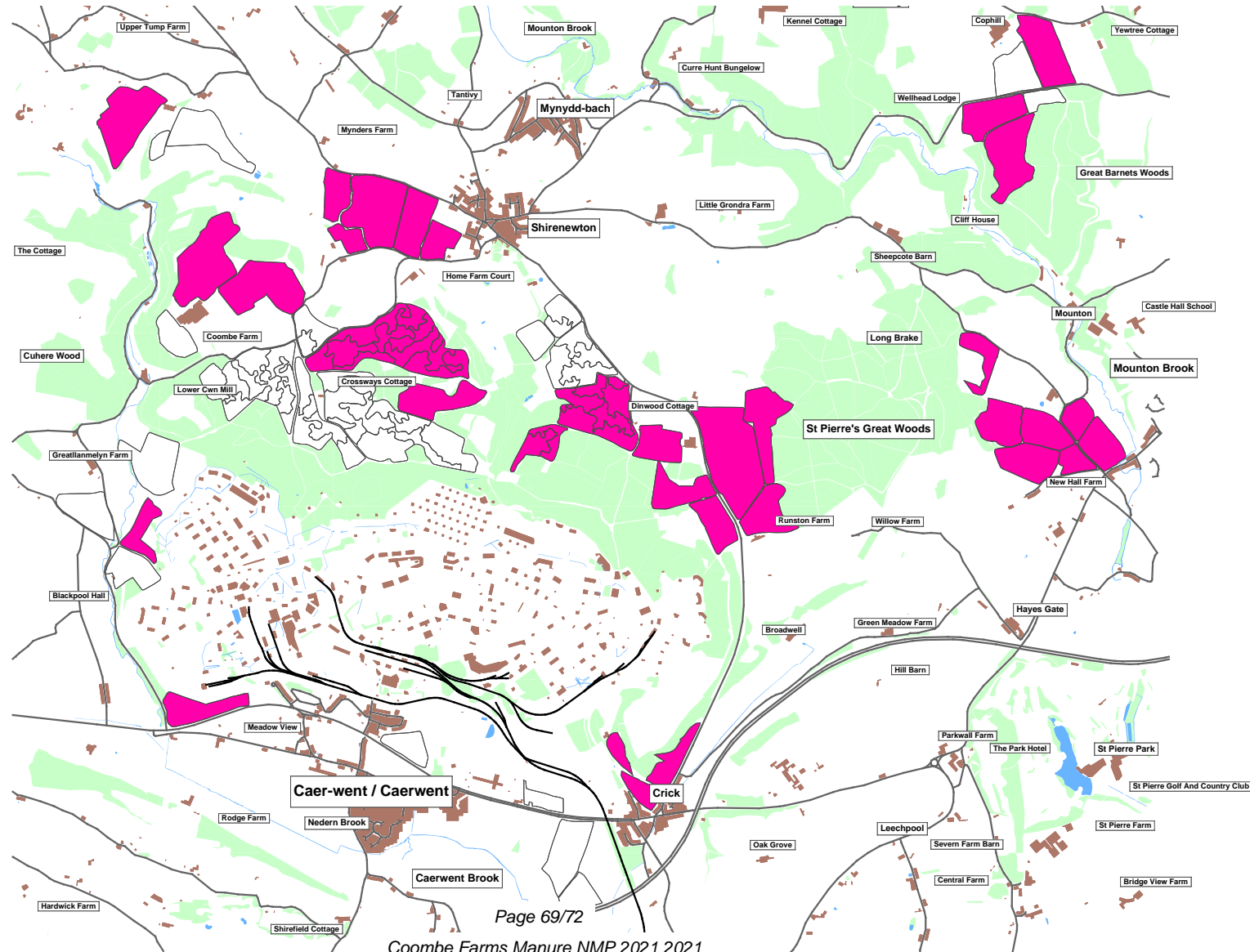
<b>Poultry - Broiler/Turkey Litter (60% D.M.)</b>
<b>A Poultry Manure</b>

Field Name	Tonnes Required	Spread Date	Tonnes Applied	Notes / Weather
Trellenny 1	23.9			
Trellenny 2	39.4			
Trellenny 3	42.2			
Trellenny 4	35.2			
Trellenny 5	16.9			
Trellenny 6	20.4			
Trellenny 7	34.5			
Whiterns Pool Field	50			
Woodcocks	40.8			

Key: T/ha

8

### Poultry - Broiler/Turkey Litter (60% D.M.), A Poultry Manure



**Product**  
**Timing**

**Poultry - Broiler/Turkey Litter (60% D.M.)**

**S Poultry Manure**

Field Name	Tonnes Required	Spread Date	Tonnes Applied	Notes / Weather
Back Field	26			
Big Field HS	50.7			
Chickory HS	22.5			
Cophill 4 Acres	14.1			
Cophill Plough Field	39.4			
Corner Field	27.6			
Crossways	171.8			
Gas Station STU	32.4			
Herns HS	14.1			
No 1 Dick the Miller	24			
No 2 Dick the Miller	21.3			
No 3 Dick the Miller	64.1			

**Product**  
**Timing**

**Poultry - Broiler/Turkey Litter (60% D.M.)**

**S Poultry Manure**

Field Name	Tonnes Required	Spread Date	Tonnes Applied	Notes / Weather
Parkers	116.7			
Penline	59.5			
Pond Field	54.9			
Pond Field Small	8.4			
Slough HS	23.2			
Triangle STU	38.7			
Under The Wood STU	54.2			

Key: T/ha

8

### Poultry - Broiler/Turkey Litter (60% D.M.), S Poultry Manure

