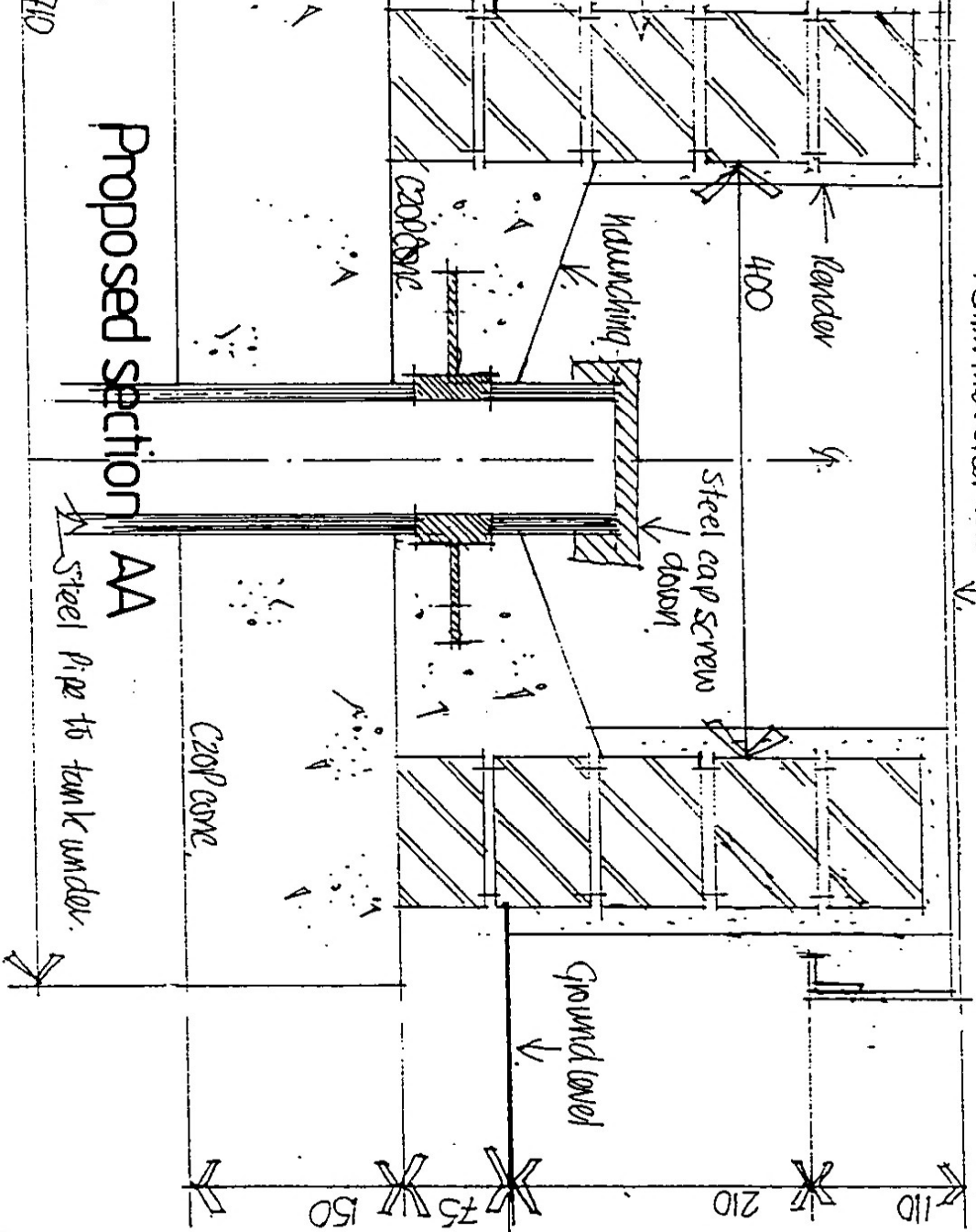


1.5mm thick steel cover



EAWML  
3 40 3 2

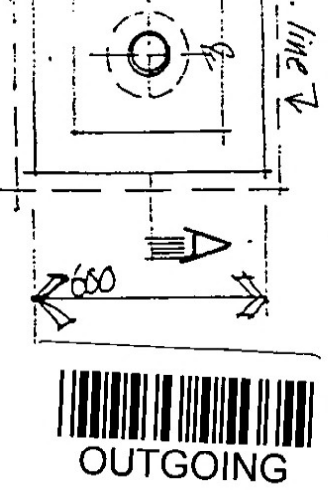


PERMIT

Proposed oil intake covers at

Gloque quarry

For Mansel Davies & Son Ltd,  
Llwyd Edwards Branch AR184 Chattered, Nethy



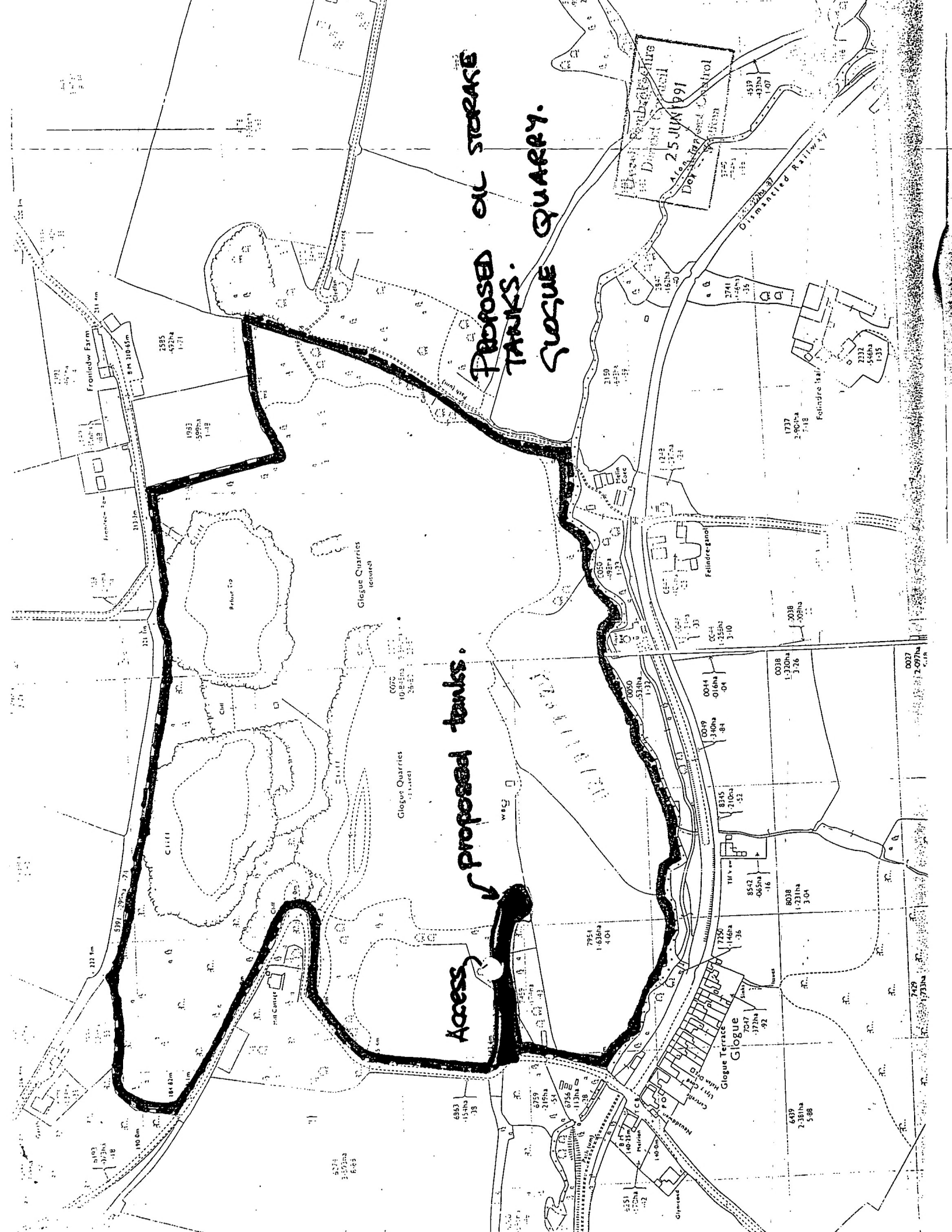
OUTGOING

MD-3

Access

Proposed tanks

PROPOSED OIL STORAGE  
TANKS.  
GLOUGUE QUARRY.



**Globe Carriers**  
12-11-1918

LICENCE NUMBER 175366 AR

TO ENTRANCE

TO QUARRY

Progress Embroidery  
 District Council  
 25 JUN 1991  
 Development Control

2/12000 Gallons OIL TANKS

Inlets

## hlets

SCALE 1:200

LOGUE QUARRY, SITING OF OIL TANKS, For MANSEL DAVIES & SON, LLANFYRNACH

JAMES EDWARDS, B. ARCH, A.R.I.S.A. CHURCH ARCHITECT,  
 THE OLD STAGES, ST. MARY STREET, CARDIFF. [339] 64-305.