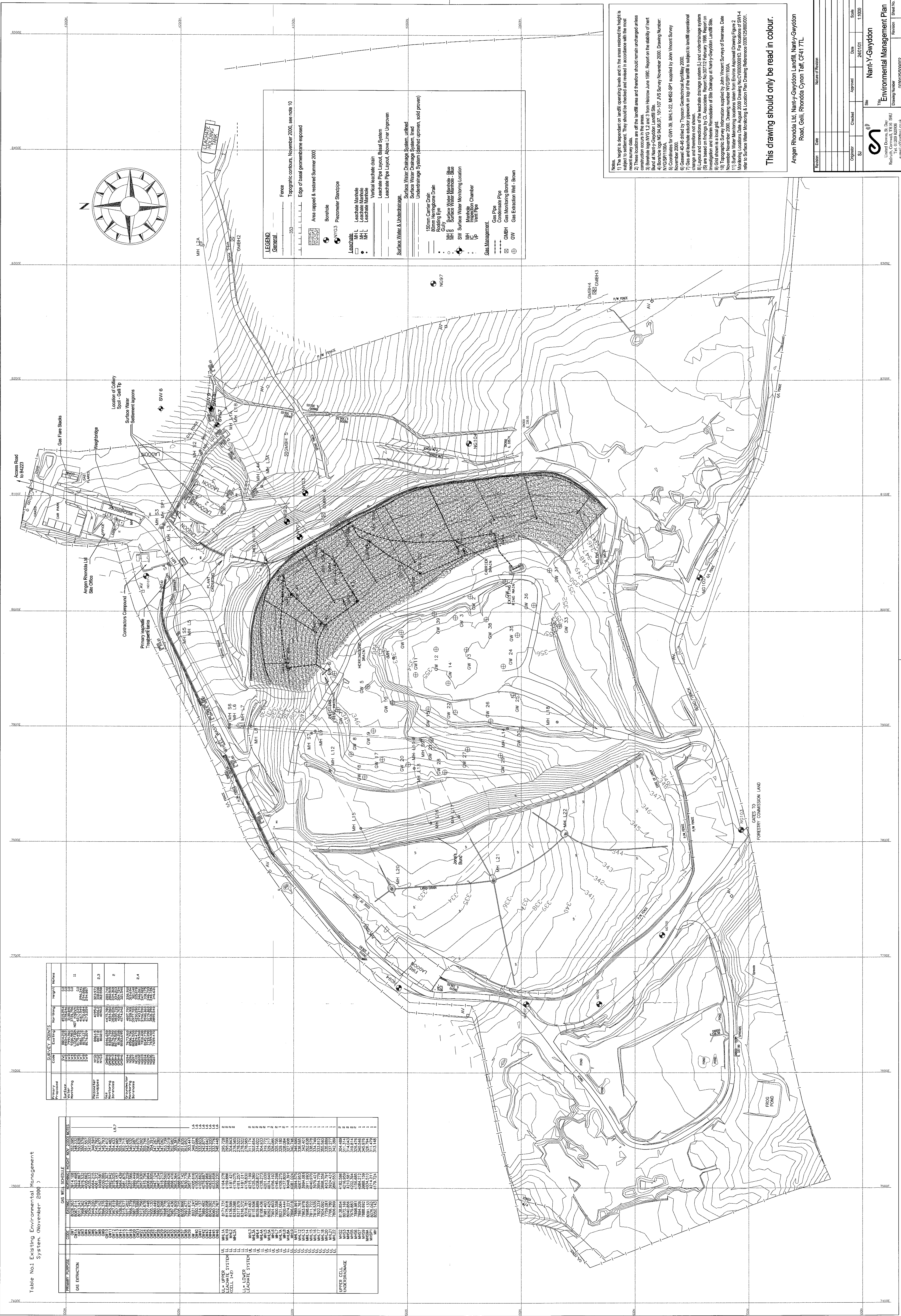


System. (November 2000) >

PRELIM. PURPOSE	CODE	EXTING.	GAS WEL. STORAGE	EXTING. HEIGHT	WEL. 2000 MINUTES
GAS EXTRACTION	OWH1	8009.74	3514.488	344.029	344.029
	OWH2	8009.74	3514.488	344.029	344.029
	OWH3	8009.74	3514.488	344.029	344.029
	OWH4	8009.74	3514.488	344.029	344.029
	OWH5	8009.74	3514.488	344.029	344.029
	OWH6	8009.74	3514.488	344.029	344.029
	OWH7	8009.74	3514.488	344.029	344.029
	OWH8	8009.74	3514.488	344.029	344.029
	OWH9	8009.74	3514.488	344.029	344.029
	OWH10	8009.74	3514.488	344.029	344.029
	OWH11	8009.74	3514.488	344.029	344.029
	OWH12	8009.74	3514.488	344.029	344.029
	OWH13	8009.74	3514.488	344.029	344.029
	OWH14	8009.74	3514.488	344.029	344.029
	OWH15	8009.74	3514.488	344.029	344.029
	OWH16	8009.74	3514.488	344.029	344.029
	OWH17	8009.74	3514.488	344.029	344.029
	OWH18	8009.74	3514.488	344.029	344.029
	OWH19	8009.74	3514.488	344.029	344.029
	OWH20	8009.74	3514.488	344.029	344.029
GAS EXTRACTION	OWH21	8009.74	3514.488	344.029	344.029
	OWH22	8009.74	3514.488	344.029	344.029
	OWH23	8009.74	3514.488	344.029	344.029
	OWH24	8009.74	3514.488	344.029	344.029
	OWH25	8009.74	3514.488	344.029	344.029
	OWH26	8009.74	3514.488	344.029	344.029
	OWH27	8009.74	3514.488	344.029	344.029
	OWH28	8009.74	3514.488	344.029	344.029
	OWH29	8009.74	3514.488	344.029	344.029
	OWH30	8009.74	3514.488	344.029	344.029
	OWH31	8009.74	3514.488	344.029	344.029
	OWH32	8009.74	3514.488	344.029	344.029
	OWH33	8009.74	3514.488	344.029	344.029
	OWH34	8009.74	3514.488	344.029	344.029
	OWH35	8009.74	3514.488	344.029	344.029
	OWH36	8009.74	3514.488	344.029	344.029
	OWH37	8009.74	3514.488	344.029	344.029
	OWH38	8009.74	3514.488	344.029	344.029
	OWH39	8009.74	3514.488	344.029	344.029
	OWH40	8009.74	3514.488	344.029	344.029
GAS EXTRACTION	OWH41	8009.74	3514.488	344.029	344.029
	OWH42	8009.74	3514.488	344.029	344.029
	OWH43	8009.74	3514.488	344.029	344.029
	OWH44	8009.74	3514.488	344.029	344.029
	OWH45	8009.74	3514.488	344.029	344.029
	OWH46	8009.74	3514.488	344.029	344.029
	OWH47	8009.74	3514.488	344.029	344.029
	OWH48	8009.74	3514.488	344.029	344.029
	OWH49	8009.74	3514.488	344.029	344.029
	OWH50	8009.74	3514.488	344.029	344.029
	OWH51	8009.74	3514.488	344.029	344.029
	OWH52	8009.74	3514.488	344.029	344.029
	OWH53	8009.74	3514.488	344.029	344.029
	OWH54	8009.74	3514.488	344.029	344.029
	OWH55	8009.74	3514.488	344.029	344.029
	OWH56	8009.74	3514.488	344.029	344.029
	OWH57	8009.74	3514.488	344.029	344.029
	OWH58	8009.74	3514.488	344.029	344.029
	OWH59	8009.74	3514.488	344.029	344.029
	OWH60	8009.74	3514.488	344.029	344.029
GAS EXTRACTION	OWH61	8009.74	3514.488	344.029	344.029
	OWH62	8009.74	3514.488	344.029	344.029
	OWH63	8009.74	3514.488	344.029	344.029
	OWH64	8009.74	3514.488	344.029	344.029
	OWH65	8009.74	3514.488	344.029	344.029
	OWH66	8009.74	3514.488	344.029	344.029
	OWH67	8009.74	3514.488	344.029	344.029
	OWH68	8009.74	3514.488	344.029	344.029
	OWH69	8009.74	3514.488	344.029	344.029
	OWH70	8009.74	3514.488	344.029	344.029
	OWH71	8009.74	3514.488	344.029	344.029
	OWH72	8009.74	3514.488	344.029	344.029
	OWH73	8009.74	3514.488	344.029	344.029
	OWH74	8009.74	3514.488	344.029	344.029
	OWH75	8009.74	3514.488	344.029	344.029
	OWH76	8009.74	3514.488	344.029	344.029
	OWH77	8009.74	3514.488	344.029	344.029
	OWH78	8009.74	3514.488	344.029	344.029
	OWH79	8009.74	3514.488	344.029	344.029
	OWH80	8009.74	3514.488	344.029	344.029
GAS EXTRACTION	OWH81	8009.74	3514.488	344.029	344.029
	OWH82	8009.74	3514.488	344.029	344.029
	OWH83	8009.74	3514.488	344.029	344.029
	OWH84	8009.74	3514.488	344.029	344.029
	OWH85	8009.74	3514.488	344.029	344.029
	OWH86	8009.74	3514.488	344.029	344.029
	OWH87	8009.74	3514.488	344.029	344.029
	OWH88	8009.74	3514.488	344.029	344.029
	OWH89	8009.74	3514.488	344.029	344.029
	OWH90	8009.74	3514.488	344.029	344.029
	OWH91	8009.74	3514.488	344.029	344.029
	OWH92	8009.74	3514.488	344.029	344.029
	OWH93	8009.74	3514.488	344.029	344.029
	OWH94	8009.74	3514.488	344.029	344.029
	OWH95	8009.74	3514.488	344.029	344.029
	OWH96	8009.74	3514.488	344.029	344.029
	OWH97	8009.74	3514.488	344.029	344.029
	OWH98	8009.74	3514.488	344.029	344.029
	OWH99	8009.74	3514.488	344.029	344.029
	OWH100	8009.74	3514.488	344.029	344.029
GAS EXTRACTION	OWH101	8009.74	3514.488	344.029	344.029
	OWH102	8009.74	3514.488	344.029	344.029
	OWH103	8009.74	3514.488	344.029	344.029
	OWH104	8009.74	3514.488	344.029	344.029
	OWH105	8009.74	3514.488	344.029	344.029
	OWH106	8009.74	3514.488	344.029	344.029
	OWH107	8009.74	3514.488	344.029	344.029
	OWH108	8009.74	3514.488	344.029	344.029
	OWH109	8009.74	3514.488	344.029	344.029
	OWH110	8009.74	3514.488	344.029	344.029
	OWH111	8009.74	3514.488	344.029	344.029
	OWH112	8009.74	3514.488	344.029	344.029
	OWH113	8009.74	3514.488	344.029	344.029
	OWH114	8009.74	3514.488	344.029	344.029
	OWH115	8009.74	3514.488	344.029	344.029
	OWH116	8009.74	3514.488	344.029	344.029
	OWH117	8009.74	3514.488	344.029	344.029
	OWH118	8009.74	3514.488	344.029	344.029
	OWH119	8009.74	3514.488	344.029	344.029
	OWH120	8009.74	3514.488	344.029	344.029
GAS EXTRACTION	OWH121	8009.74	3514.488	344.029	344.029
	OWH122	8009.74	3514.488	344.029	344.029
	OWH123	8009.74	3514.488	344.029	344.029
	OWH124	8009.74	3514.488	344.029	344.029
	OWH125	8009.74	3514.488	344.029	344.029
	OWH126	8009.74	3514.488	344.029	344.029
	OWH127	8009.74	3514.488	344.029	344.029
	OWH128	8009.74	3514.488	344.029	344.029
	OWH129	8009.74	3514.488	344.029	344.029
	OWH130	8009.74	3514.488	344.029	344.029
	OWH131	8009.74	3514.488	344.029	344.029
	OWH132	8009.74	3514.488	344.029	344.029
	OWH133	8009.74	3514.488	344.029	344.029
	OWH134	8009.74	3514.488	344.029	344.029
	OWH135	8009.74	3514.488	344.029	344.029
	OWH136	8009.74	3514.488	344.029	344.029
	OWH137	8009.74	3514.488	344.029	344.029
	OWH138	8009.74	3514.488	344.029	344.029
	OWH139	8009.74	3514.488	344.029	344.029
	OWH140	8009.74	3514.488	344.029	344.029
GAS EXTRACTION	OWH141	8009.74	3514.488	344.029	344.029
	OWH142	8009.74	3514.488	344.029	344.029
	OWH143	8009.74	3514.488	344.029	344.029
	OWH144	8009.74	3514.488	344.029	344.029
	OWH145	8009.74	3514.488	344.029	344.029
	OWH146	8009.74	3514.488	344.029	344.029
	OWH147	8009.74	3514.488	344.029	344.029
	OWH148	8009.74	3514.488	344.029	344.029
	OWH149	8009.74	3514.488	344.029	344.029
	OWH150	8009.74	3514.488	344.029	344.029
	OWH151	8009.74	3514.488	344.029	344.029
	OWH152	8009.74	3514.488	344.029	344.029
	OWH153	8009.74	3514.488	344.029	344.029
	OWH154	8009.74	3514.488	344.029	344.029
	OWH155	8009.74	3514.488	344.029	344.029
	OWH156	8009.74	3514.488	344.029	344.029
	OWH157	8009.74	3514.488	344.029	344.029
	OWH158	8009.74	3514.488	344.029	344.029
	OWH159	8009.74	3514.488	344.029	344.029
	OWH160	8009.74	3514.488	344.029	344.029
GAS EXTRACTION	OWH161	8009.74	3514.488	344.029	344.029
	OWH162	8009.74	3514.488	344.029	344.029
	OWH163	8009.74	3514.488	344.029	344.029
	OWH164	8009.74	3514.488	344.029	344.029
	OWH165	8009.74	3514.488	344.029	344.029
	OWH166	8009.74	3514.488	344.029	344.029
	OWH167	8009.74	3514.488	344.029	344.029
	OWH168	8009.74	3514.488	344.029	344.029
	OWH169	8009.74	3514.488	344.029	344.029
	OWH170	8009.74	3514.488	344.029	344.029
	OWH171	8009.74	3514.488	344.029	344.029
	OWH172	8009.74	3514.488	344.029	344.029
	OWH173	8009.74	3514.488	344.029	344.029
	OWH174	8009.74	3514.488	344.029	344.029
	OWH175	8009.74	3514.488	344.029	344.029
	OWH176	8009.74	3514.488	344.029	344.029
	OWH177	8009.74	3514.488	344.029	344.029
	OWH178	8009.74	3514.488	344.029	344.029
	OWH179	8009.74	3514.488	344.029	344.029
	OWH180	8009.74	3514.488	344.029	344.029
GAS EXTRACTION	OWH181	8009.74	3514.488	344.029	344.029
	OWH182	8009.74	3514.488	344.029	344.029
	OWH183	8009.74	3514.488	344.029	344.029
	OWH184	8009.74	3514.488	344.029	344.029
	OWH185	8009.74	3514.488	344.029	344.029
	OWH186	8009.74	3514.488	344.029	344.029
	OWH187	8009.74	3514.488	344.029	344.029
	OWH188	8009.74	3514.488	344.029	344.029
	OWH189	8009.74	3514.488	344.029	344.029
	OWH190	8009.74	3514.488	344.029	344.029
	OWH191	8009.74	3514.488	344.029	344.029
	OWH192	8009.74	3514.488	344.029	344.029
	OWH193	8009.74	3514.488	344.029	344.029
	OWH194	8009.74	3514.488	344.029	344.029
	OWH195	8009.74	3514.488	344.029	344.029
	OWH196				

[illegible]

- 1 The height is dependent on local operating levels and in the areas restored the height is dependent on the height of the adjacent land.
- 2 The height of the landfill area is dependent on the height of the adjacent land and the extent of settlement. This should be checked and revised in accordance with the most recent survey data.
- 3 The height of the landfill area and therefore should terrain and changed unless construction occurs in the area.
- 4 Evaluate zones MVS 1.2 and 3 from Marchion June 1980. Report on the stability of inert bank at Nany-County Landfill Site.
- 5 USFS Report dated 1980.
- 6 USFS Report dated 1980.
- 7 USFS Report dated 1980.
- 8 USFS Report dated 1980.
- 9 USFS Report dated 1980.
- 10 USFS Report dated 1980.
- 11 USFS Report dated 1980.
- 12 USFS Report dated 1980.
- 13 USFS Report dated 1980.
- 14 USFS Report dated 1980.
- 15 USFS Report dated 1980.
- 16 USFS Report dated 1980.
- 17 USFS Report dated 1980.
- 18 USFS Report dated 1980.
- 19 USFS Report dated 1980.
- 20 USFS Report dated 1980.
- 21 USFS Report dated 1980.
- 22 USFS Report dated 1980.
- 23 USFS Report dated 1980.
- 24 USFS Report dated 1980.
- 25 USFS Report dated 1980.
- 26 USFS Report dated 1980.
- 27 USFS Report dated 1980.
- 28 USFS Report dated 1980.
- 29 USFS Report dated 1980.
- 30 USFS Report dated 1980.
- 31 USFS Report dated 1980.
- 32 USFS Report dated 1980.
- 33 USFS Report dated 1980.
- 34 USFS Report dated 1980.
- 35 USFS Report dated 1980.
- 36 USFS Report dated 1980.
- 37 USFS Report dated 1980.
- 38 USFS Report dated 1980.
- 39 USFS Report dated 1980.
- 40 USFS Report dated 1980.
- 41 USFS Report dated 1980.
- 42 USFS Report dated 1980.
- 43 USFS Report dated 1980.
- 44 USFS Report dated 1980.
- 45 USFS Report dated 1980.
- 46 USFS Report dated 1980.
- 47 USFS Report dated 1980.
- 48 USFS Report dated 1980.
- 49 USFS Report dated 1980.
- 50 USFS Report dated 1980.
- 51 USFS Report dated 1980.
- 52 USFS Report dated 1980.
- 53 USFS Report dated 1980.
- 54 USFS Report dated 1980.
- 55 USFS Report dated 1980.
- 56 USFS Report dated 1980.
- 57 USFS Report dated 1980.
- 58 USFS Report dated 1980.
- 59 USFS Report dated 1980.
- 60 USFS Report dated 1980.
- 61 USFS Report dated 1980.
- 62 USFS Report dated 1980.
- 63 USFS Report dated 1980.
- 64 USFS Report dated 1980.
- 65 USFS Report dated 1980.
- 66 USFS Report dated 1980.
- 67 USFS Report dated 1980.
- 68 USFS Report dated 1980.
- 69 USFS Report dated 1980.
- 70 USFS Report dated 1980.
- 71 USFS Report dated 1980.
- 72 USFS Report dated 1980.
- 73 USFS Report dated 1980.
- 74 USFS Report dated 1980.
- 75 USFS Report dated 1980.
- 76 USFS Report dated 1980.
- 77 USFS Report dated 1980.
- 78 USFS Report dated 1980.
- 79 USFS Report dated 1980.
- 80 USFS Report dated 1980.
- 81 USFS Report dated 1980.
- 82 USFS Report dated 1980.
- 83 USFS Report dated 1980.
- 84 USFS Report dated 1980.
- 85 USFS Report dated 1980.
- 86 USFS Report dated 1980.
- 87 USFS Report dated 1980.
- 88 USFS Report dated 1980.
- 89 USFS Report dated 1980.
- 90 USFS Report dated 1980.
- 91 USFS Report dated 1980.
- 92 USFS Report dated 1980.
- 93 USFS Report dated 1980.
- 94 USFS Report dated 1980.
- 95 USFS Report dated 1980.
- 96 USFS Report dated 1980.
- 97 USFS Report dated 1980.
- 98 USFS Report dated 1980.
- 99 USFS Report dated 1980.
- 100 USFS Report dated 1980.

This drawing should only be read in colour.

Amgen Rhondda Ltd, Nant-y-Gwyddon Landfill, Nant-y-Gwyddon Road, Gelli, Rhondda Cynon Taff, CF41 7TL.

[illegible]