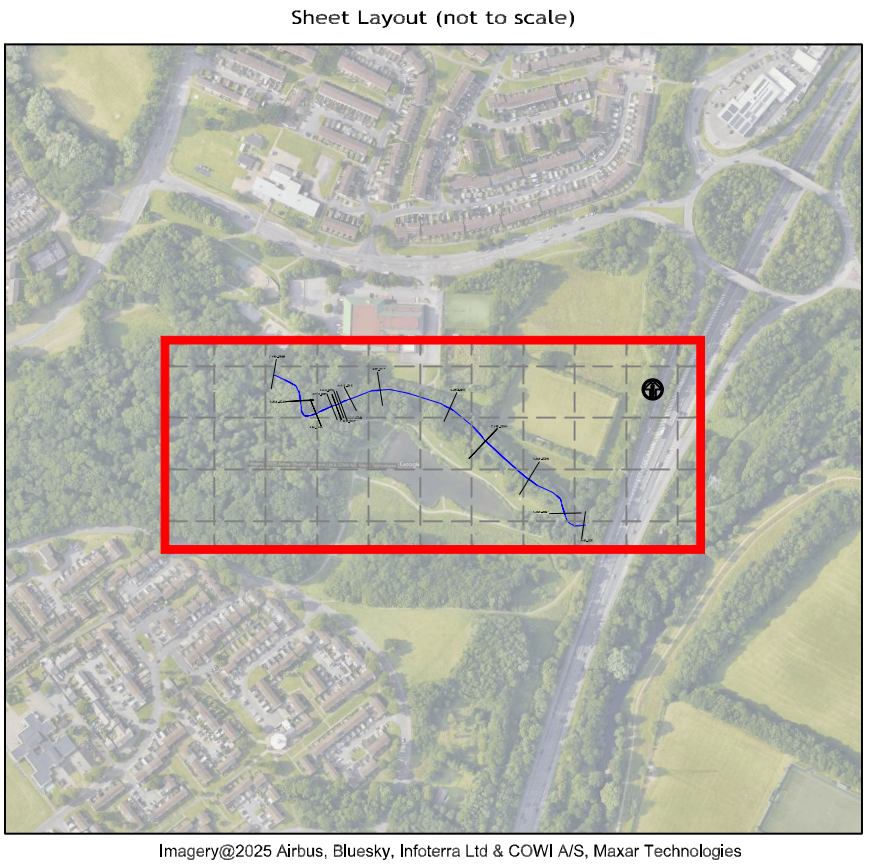


Scale: 1:500H 1:100V



NOTES:

ALL LAYOUTS AND VIEWS ARE FOR INFORMATION ONLY. THE INFORMATION IS NOT TO BE USED FOR ANY OTHER PURPOSES.

ALL LAYOUTS AND VIEWS ARE FOR INFORMATION ONLY. THE INFORMATION IS NOT TO BE USED FOR ANY OTHER PURPOSES.

REV	AMENDMENT	DATE
1	ISSUED FOR INFORMATION	19/02/2025

REV	AMENDMENT	DATE
1	ISSUED FOR INFORMATION	19/02/2025

REV	AMENDMENT	DATE
1	ISSUED FOR INFORMATION	19/02/2025

REV	AMENDMENT	DATE
1	ISSUED FOR INFORMATION	19/02/2025

REV	AMENDMENT	DATE
1	ISSUED FOR INFORMATION	19/02/2025

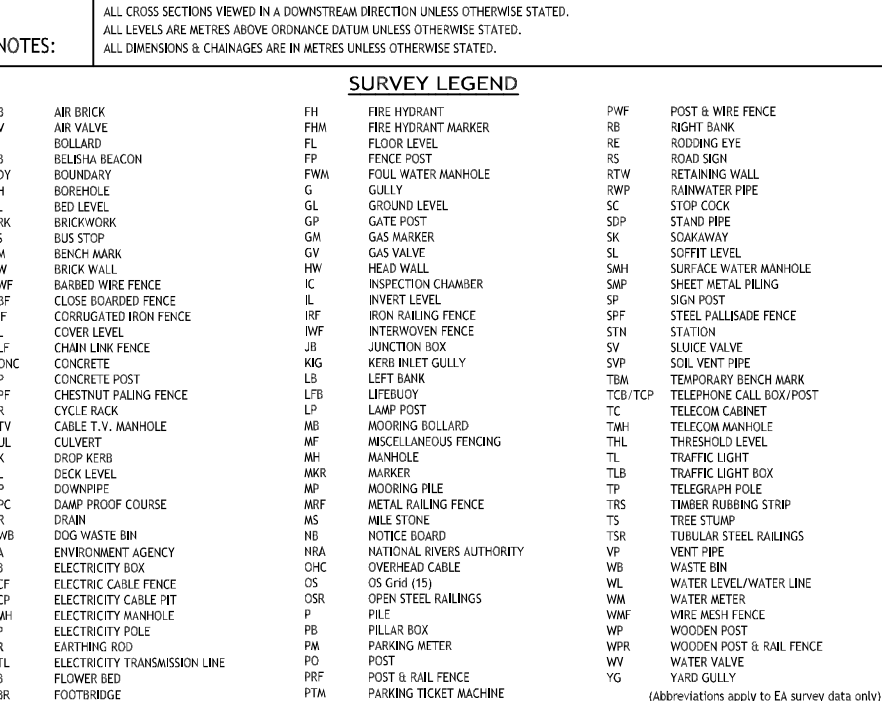
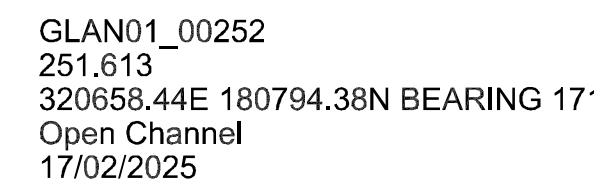
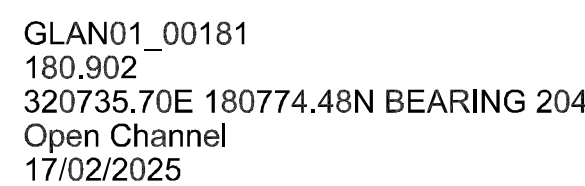
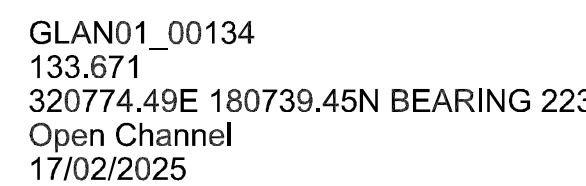
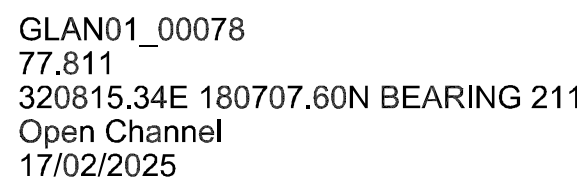
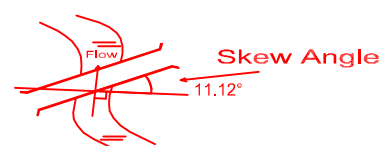
REV	AMENDMENT	DATE
1	ISSUED FOR INFORMATION	19/02/2025

REV	AMENDMENT	DATE
1	ISSUED FOR INFORMATION	19/02/2025

REV	AMENDMENT	DATE
1	ISSUED FOR INFORMATION	19/02/2025

REV	AMENDMENT	DATE
1	ISSUED FOR INFORMATION	19/02/2025

REV	AMENDMENT	DATE
1	ISSUED FOR INFORMATION	19/02/2025



REV.	AMENDMENT	DRN	CHD	DATE

ID	DESCRIPTION	Easting	Northing	Height
5-1	PK Nail	32066.4264	180726.022	10.869

STORM
GEOMATICS

Tel: 01608 664910
mail@storm-geomatics.com
www.storm-geomatics.com

 **RICS**
REGISTERED
MEMBER

 **THE QUALITY STANDARD**
FOR
CONSTRUCTION

 **RICS**
REGISTERED
MEMBER

 **Constructionline**
MEMBER

 **CARBON**
TRUST
REGISTERED
MEMBER

 **GBC**
REGISTERED
MEMBER

 **GBC**
REGISTERED
MEMBER

 **GBC**
REGISTERED
MEMBER

JBA Consulting

PROJECT Pentwyn Lake

Pentwyn, Cardiff, CF23 7EZ
GLAN01
GLAN01_00002 to GLAN01_00252
Sheet 1 of 2

SURVEYED BY: Storm Geomatics Ltd		Project Ref: 25s02s02530	
SURVEY DATE: February 2025			
SCALE: 1:100 (A0 Sheet)		DRN: MBH	CHKD: M.B.M
DATUM: OS Newlyn (15)		DATE: 19/02/2025	DATE: 19/02/2025
GRID: OS Grid (15)		DRAWING NO.	REV.
A0 FILENAME: 2025s0024_DCS_GLAND1_XS.dwg		2025s0024/01	-

