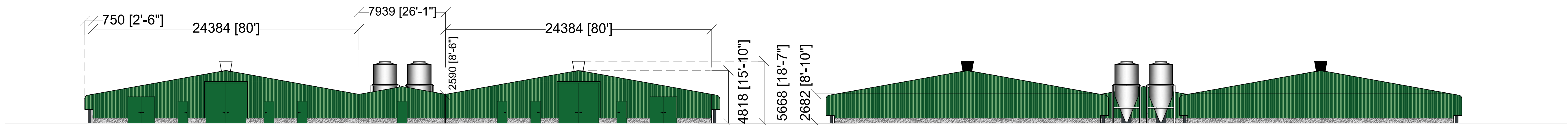
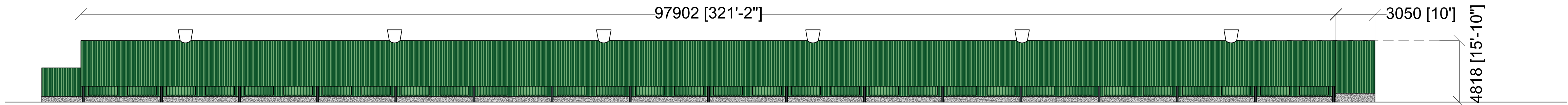


floor plan

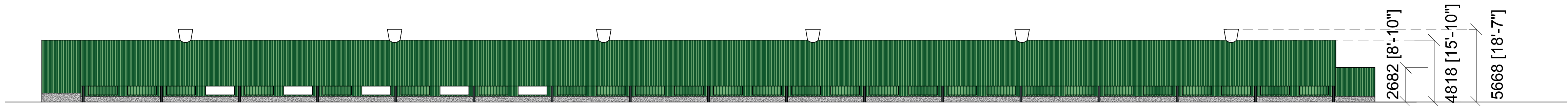


front elevation

front elevation



front elevation



front elevation



Amendments:

PLANNING ISSUE

BERRYS
PROPERTY | BUSINESS | PLANNING

01743 271697 | SY2 6FG
www.berrys.uk.com

Client:

G & A Powell Ltd.

Project:

Proposed Broiler Units on Land at Glenmiheli
Farm, Kerry, Newtown.

Drawing:

Proposed floor plan and elevations of new units.

Drawing Number: SA31064_PL_21 | Rev. | Scale 1:200 | Paper A1 | Drawn By: RC | Date: Oct 2018