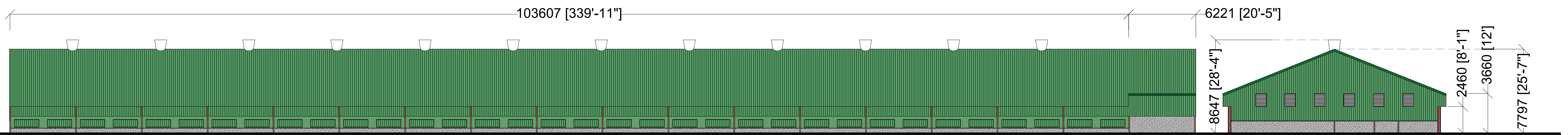
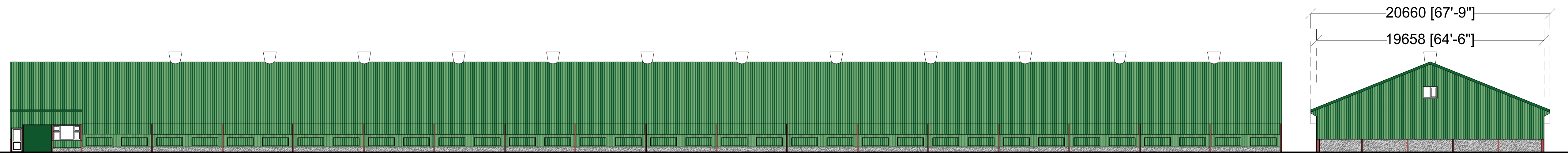


floor plan



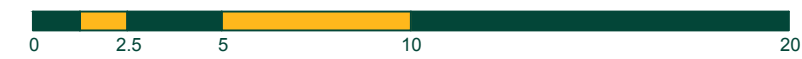
side (ne) elevation

rear (se) elevation



side (sw) elevation

front (nw) elevation



Amendments:

PLANNING ISSUE

**BERRYS**

PROPERTY | BUSINESS | PLANNING  
01743 271697 | SY2 6FG

[www.berrys.uk.com](http://www.berrys.uk.com)

Client:

G & A Powell Ltd.

Project:

Proposed Broiler Units on Land at Glenmiheli  
Farm, Kerry, Newtown.

Drawing:

Proposed floor plan and elevations of converted  
unit.

Drawing Number:  
SA31064\_PL\_22

Rev.

Scale  
1:200

Paper  
A1

Drawn By: RC  
Date: Oct 2018