

NOTES

1. THIS PLAN CONTAINS ORDNANCE SURVEY MAP DATA REPRODUCED WITH THE PERMISSION OF THE CONTROLLER OF HER MAJESTY'S STATIONARY OFFICE, CROWN COPYRIGHT © (LICENCE No AL100036676)

LEGEND

- INSTALLATION BOUNDARY
- COMPLETED LANDFILL
- CURRENT LANDFILL
- BH 6A GAS MONITORING POINTS
- GW 3 GROUNDWATER MONITORING POINTS
- SW 1 SURFACE WATER MONITORING POINTS
- LMP LEACHATE MONITORING POINT

WYN GRIFFITHS & SONS

TY-MAWR FARM,
ABERGELE

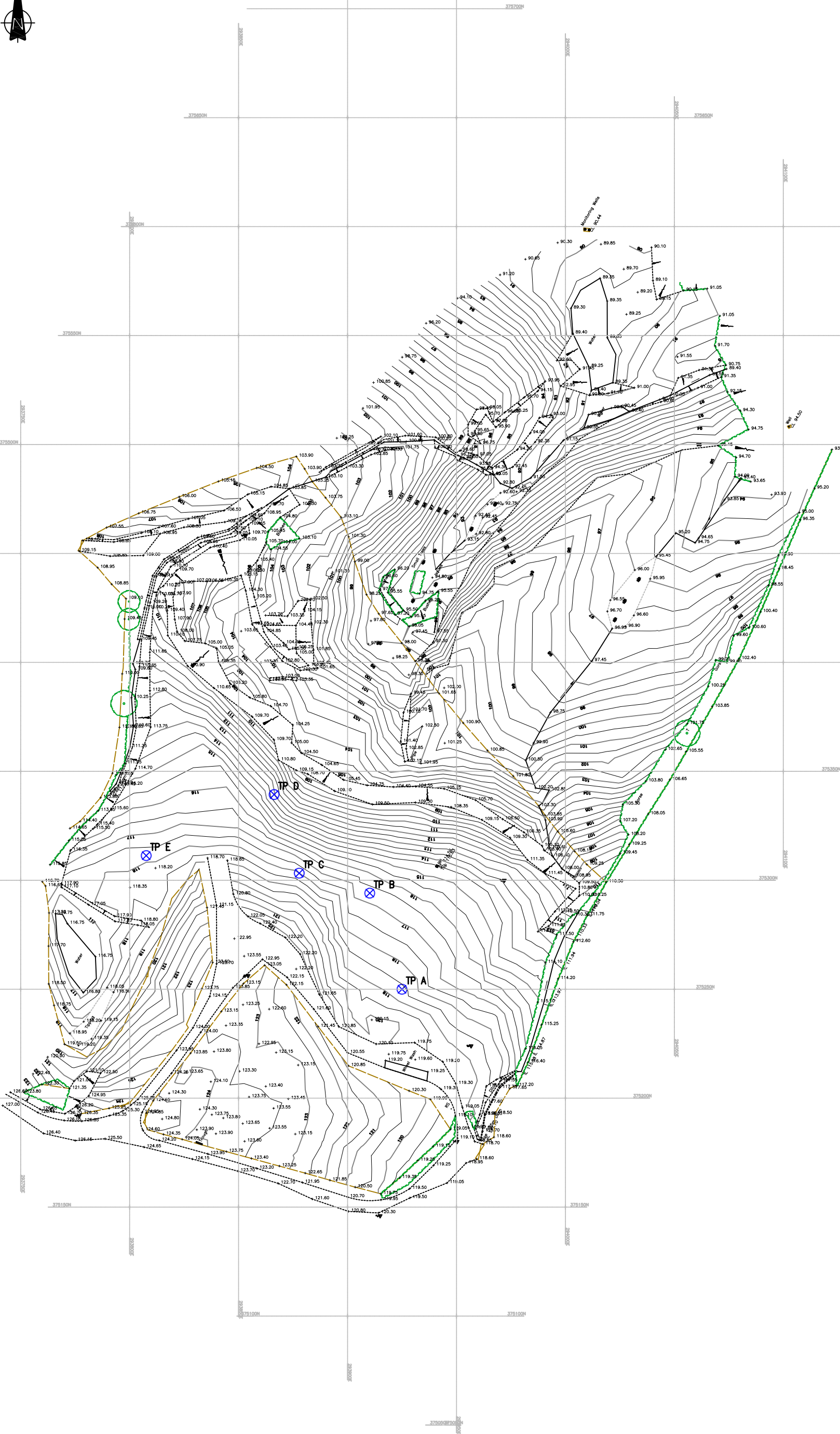
LANDFILL PHASING

DRAWN BY	EW	DATE	03.05.2006
CHECKED BY	SV	SCALE @ A3	1:5000
APPROVED BY	AS	ISSUING OFFICE	ALFRETON
DRAWING NUMBER	2058.ESID.04	ISSUE	Fn
		REVISION	A

Egnioi Limited
Amber Mill, Oakertorpe,
Alfreton, Derbyshire,
DE55 7LL



Tel: 01773 520200
Fax: 01773 835439
Website: www.egnioi.co.uk



NOTES
1. THIS DRAWING IS BASED ON INFORMATION PROVIDED BY CO-ORDINATED SURVEYS.
DRAWING REFERENCE: 5890/1. DATED: APRIL 2006.

2. LEGEND
TP A DENOTES APPROXIMATE TRIAL PIT LOCATION

WYN GRIFFITHS
& SONS

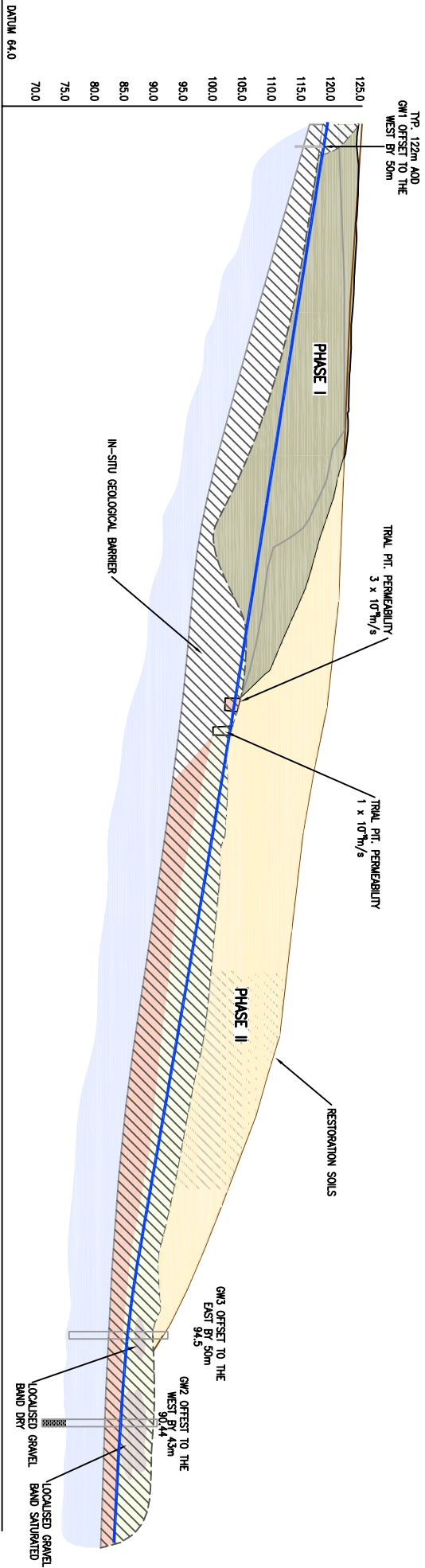
TY-MAWR FARM,
ABERGELE

TRIAL PIT LOCATIONS

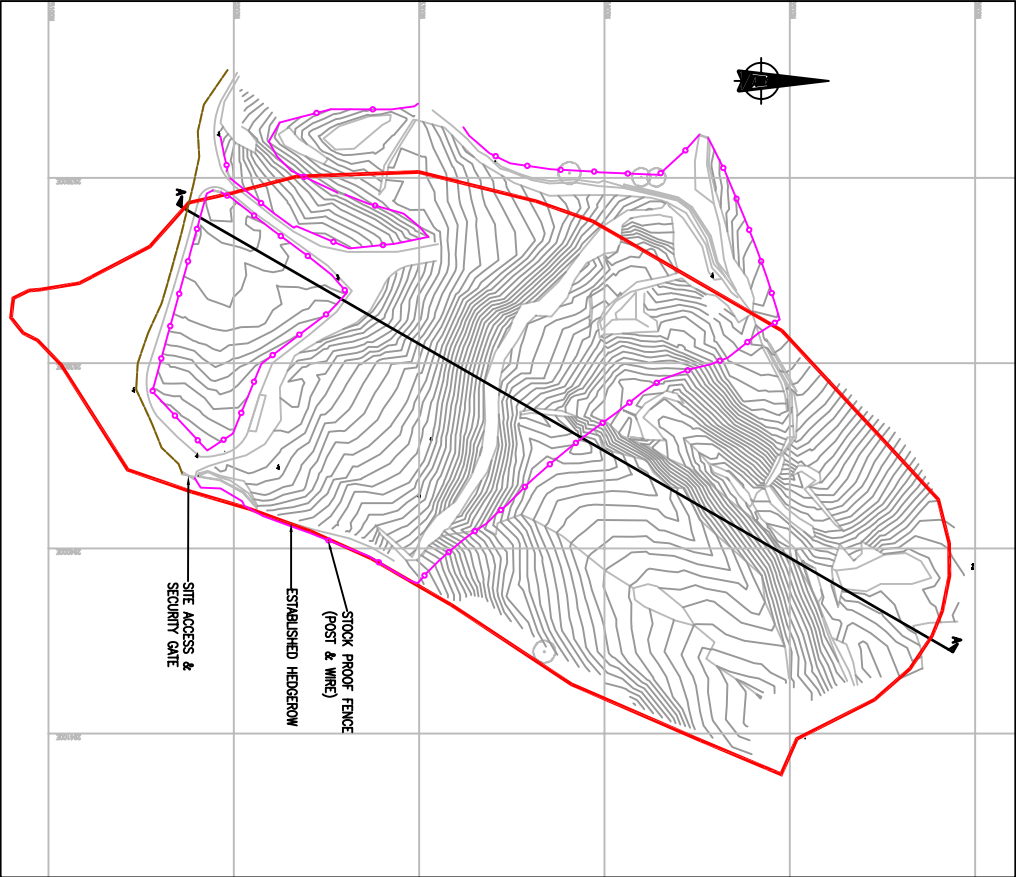
DRAWN BY SSG	DATE 06.11.06
CHECKED BY DK	SCALE 1:1250
APPROVED BY SV	ISSUING OFFICE BANGOR
DRAWING NUMBER 2058.SCH.01	ISSUE -
	REVISION -

Egniol Limited
Tre Felin,
Bangor, Gwynedd,
LL57 4LH
Tel: 01248 355996
Fax: 01248 371996
Website: www.egniol.com





SECTION A-A
HORIZONTALLY 1:1000, VERTICALLY 1:500



PLAN OF SITE SHOWING SECTION LOCATIONS
1:2000

- NOTES
1. LEGEND
- DENOTES EXTENT OF WASTE TO BE INFILLED
 - DENOTES EXTENT OF INFILLED WASTE MASS 1988–1995
 - SAND & GRAVEL IN GW2 & GW3
 - UNDIFFERENTIATED BOULDER CLAY
 - BLUE GREY CLAY
 - GRAVELLY CLAY
 - AQUIFER COMPRISING SAND & GRAVEL IN NORTH, BEDROCK IN SOUTH
 - PIEZOMETRIC SURFACE

REV	MODIFICATIONS	BY	CH	AP	DATE
-----	---------------	----	----	----	------

WYN GRIFFITHS & SONS

TY-MAWR FARM,
ABERGELE

HYDROGEOLOGICAL
CROSS SECTION

DRAWN BY	EW	DATE	06.11.2006
----------	----	------	------------

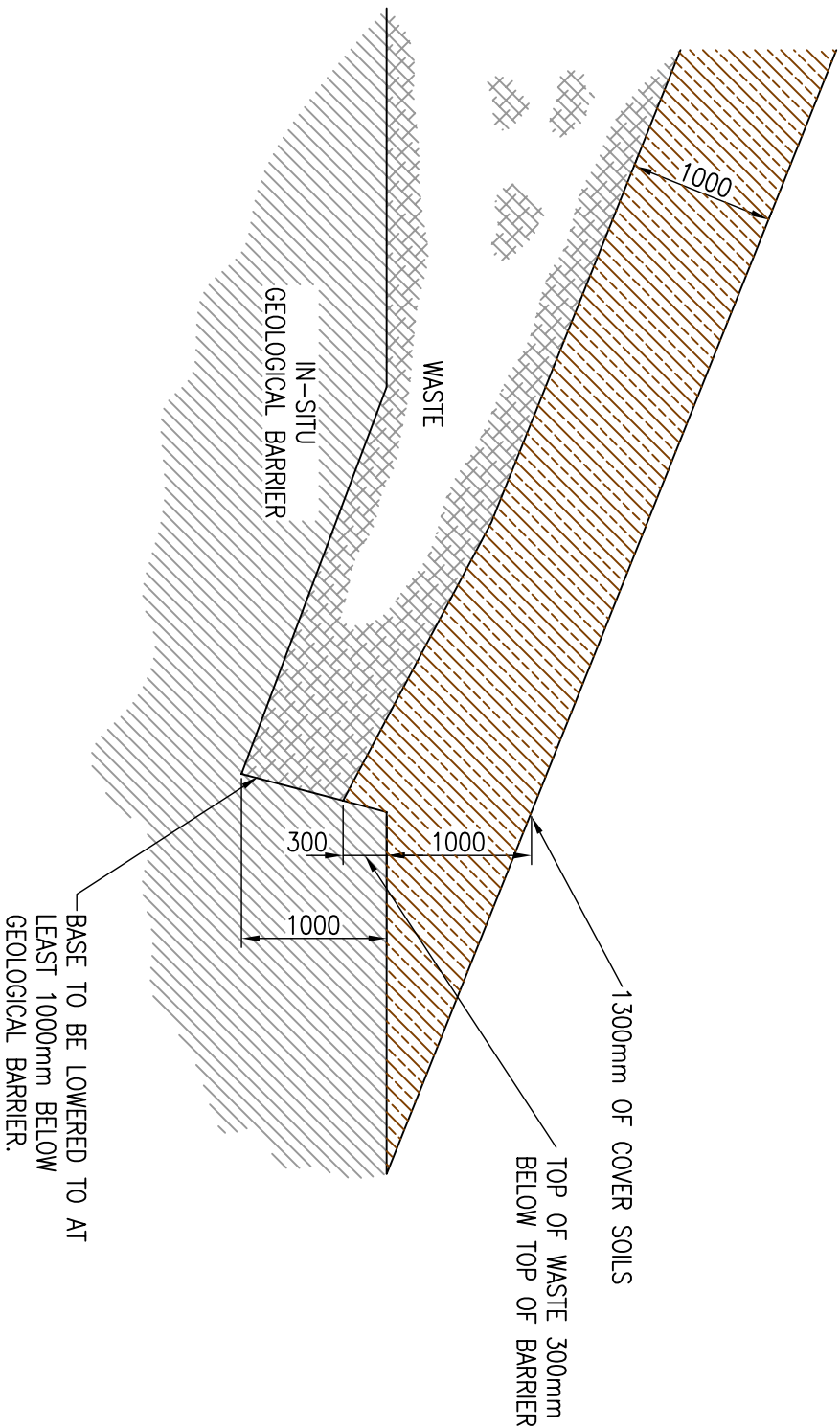
CHECKED BY	MP	SCALE	AS SHOWN
------------	----	-------	----------

APPROVED BY	SV	ISSUING OFFICE	ALFETON
-------------	----	----------------	---------

DRAWING NUMBER	2058.SRA.01	ISSUE	Fn	REASON	-
----------------	-------------	-------	----	--------	---

Egniol Limited
Amber Mill, Oakenhorpe,
Alfreton, Derbyshire,
DE65 7TL
Tel: 01773 320200
Fax: 01773 320200
Website: www.egniol.co.uk





NOTES

WYN GRIFFITHS & SONS				
TY-MAWR FARM, ABERGELE				
ENGINEERING & INSTALLATION DETAILS				
DRAWN BY EW	DATE 06.11.2006			
CHECKED BY MP	SCALE @ A3 1:50			
APPROVED BY SV	ISSUING OFFICE ALFRETON			
DRAWING NUMBER 2058.SRA.02	ISSUE Fn	REVISION -		
Egniol Limited Amber Mill, Oakerthorpe, Alfreton, Derbyshire, DE55 7LL				
Tel: 01773 520200 Fax: 01773 835439 Website: www.egniol.co.uk				

