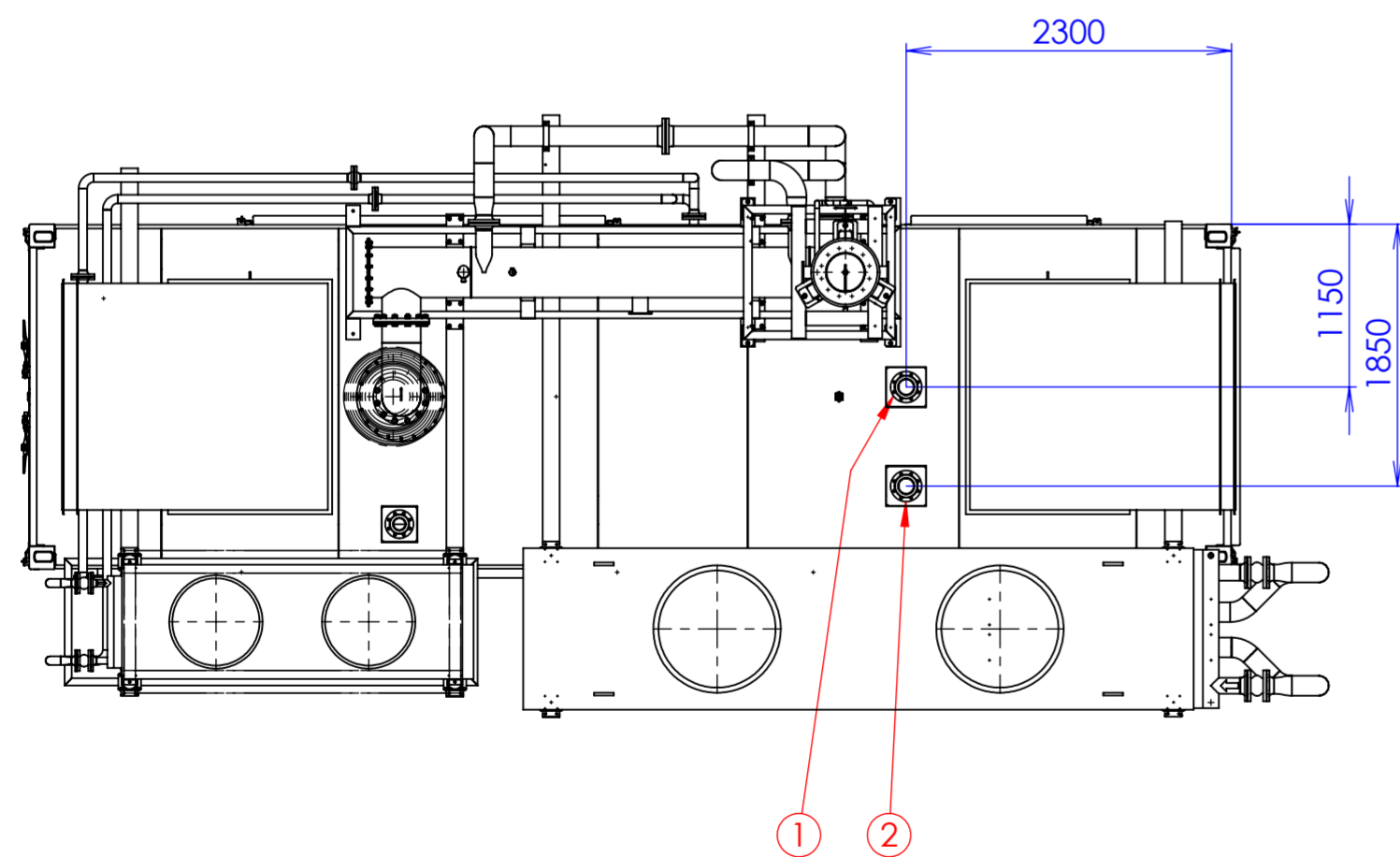
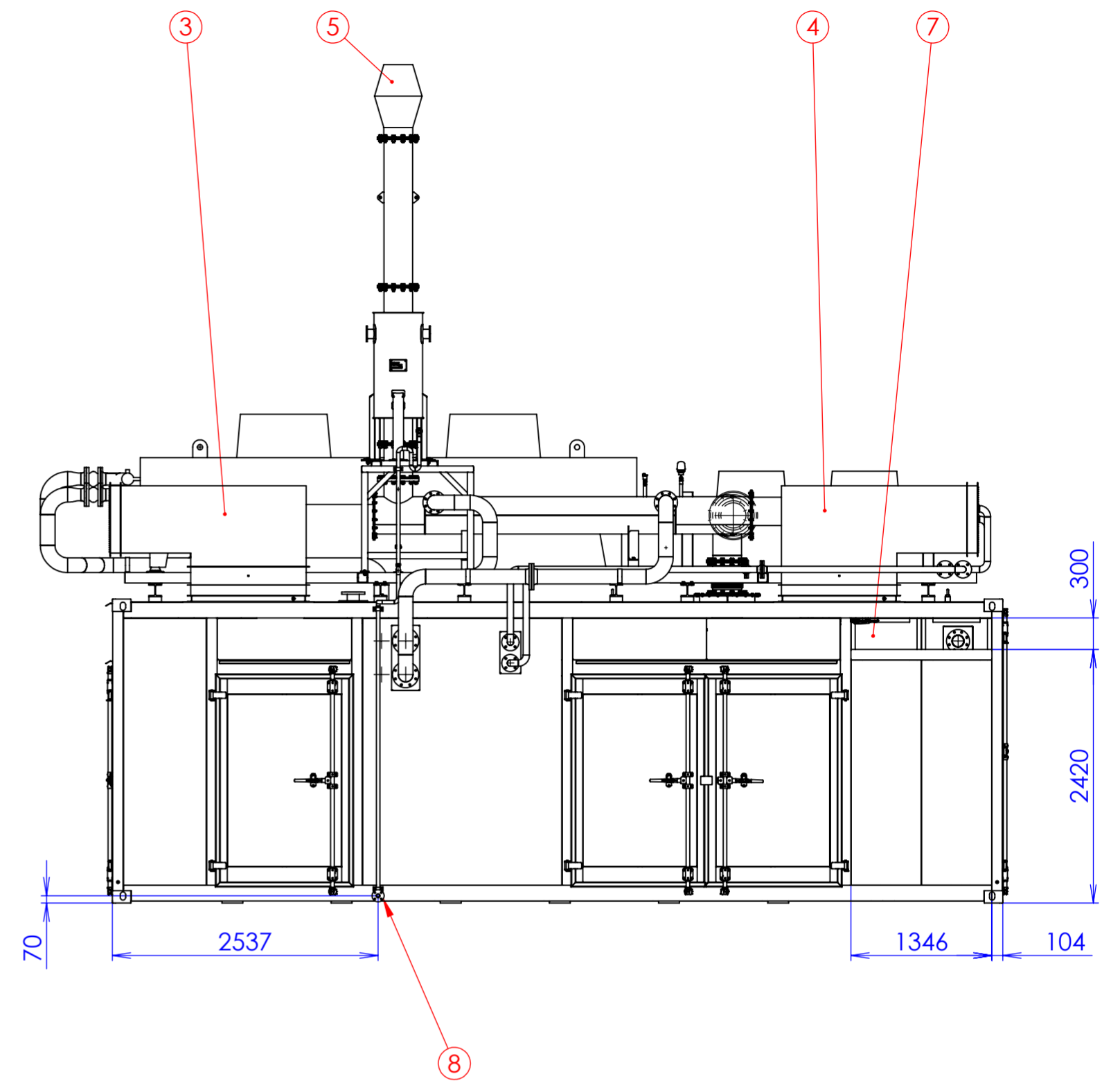
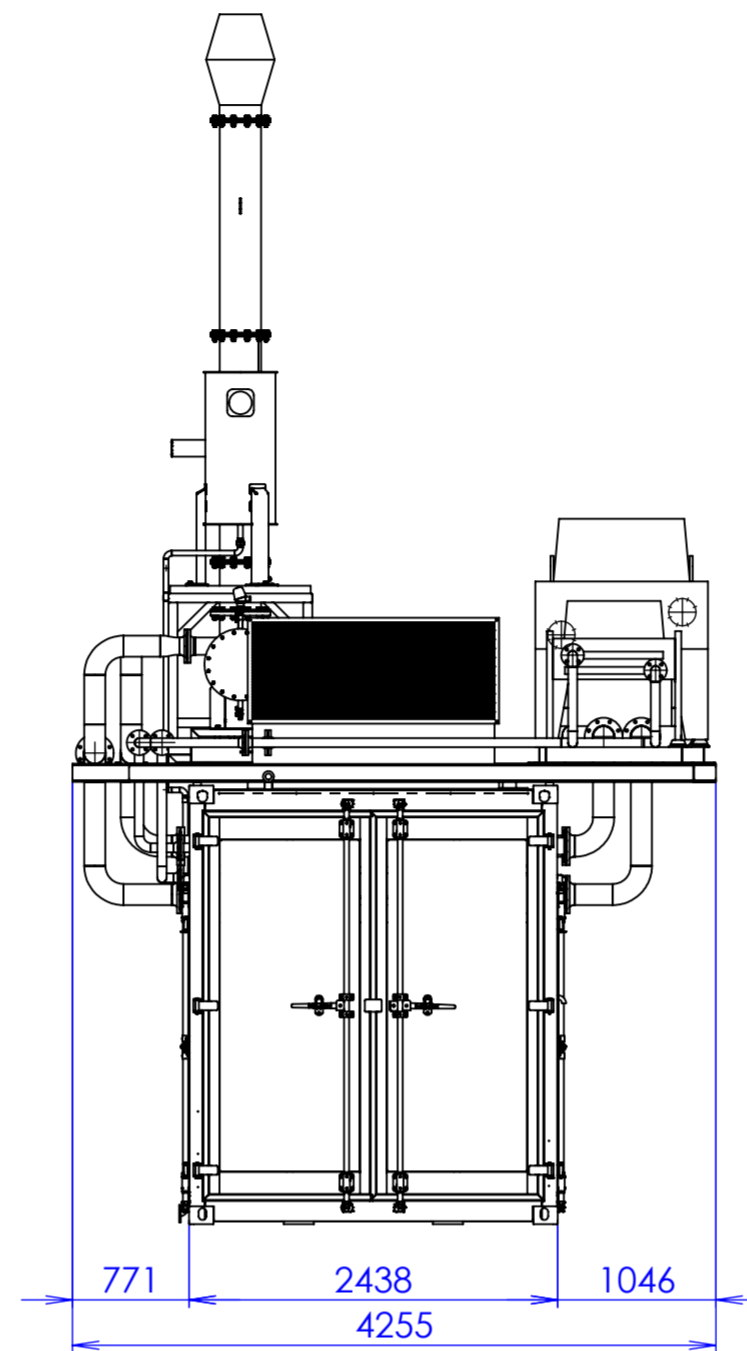
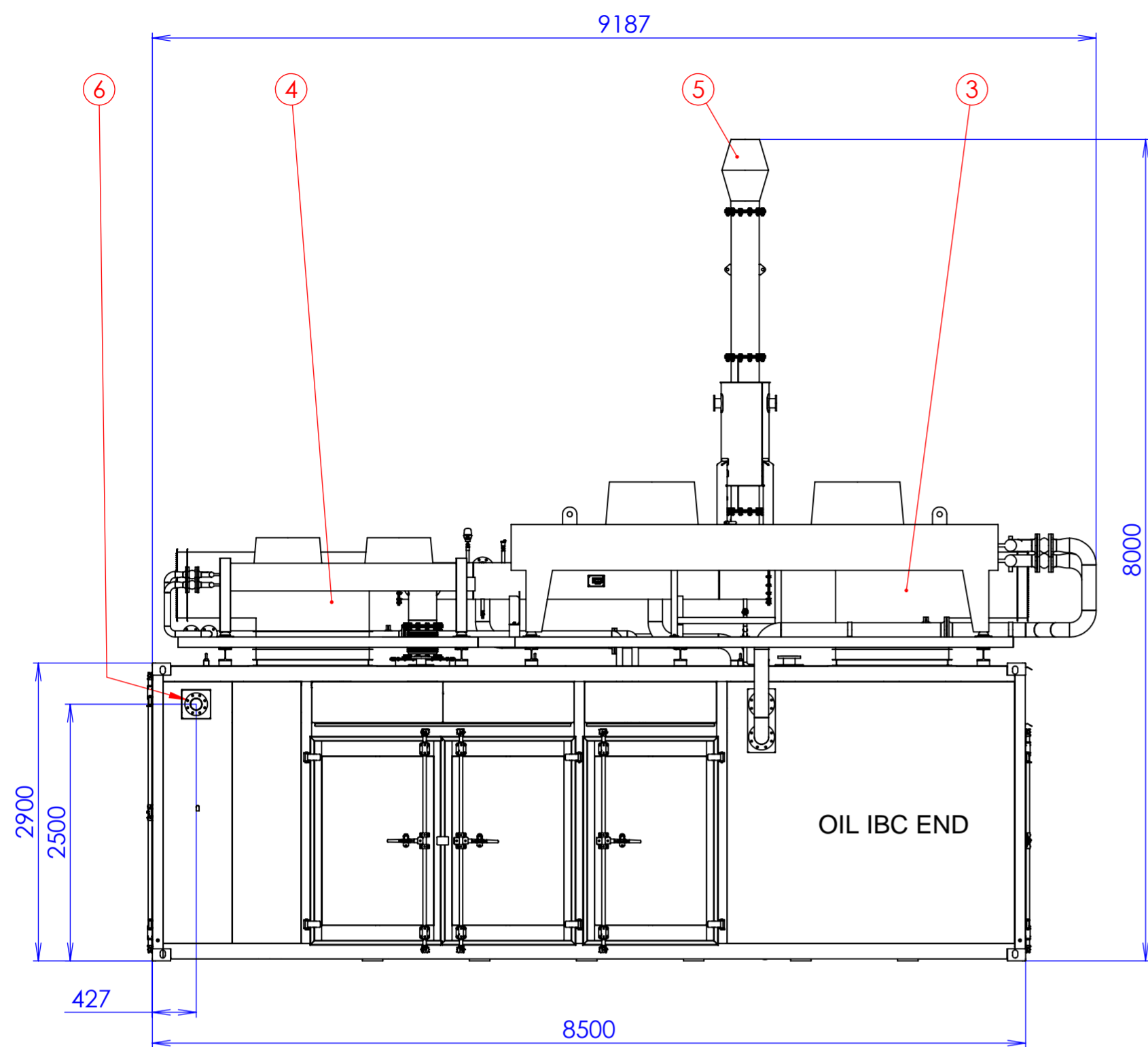
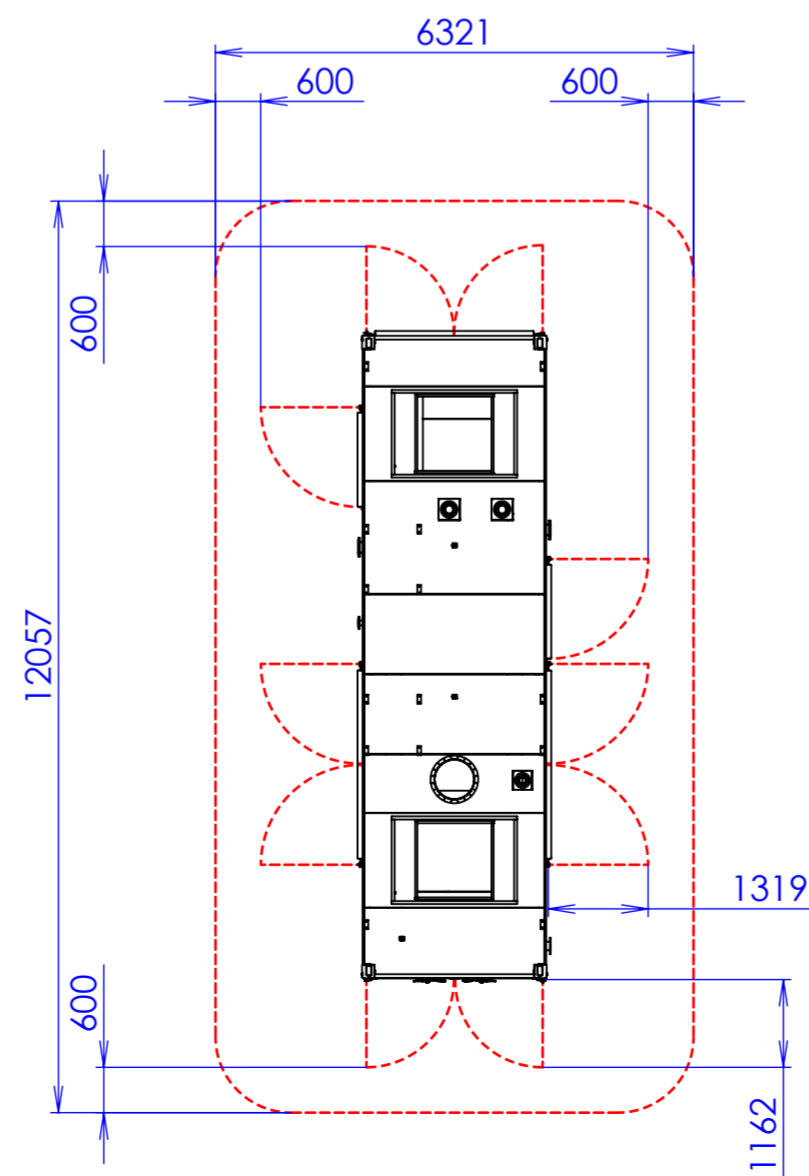


REVISION			
REV.	DESCRIPTION	DATE	NAME



TOP VIEW - OPERATING AREA  
SCALE 1:100



1. SECONDARY CIRCUIT INLET - 1x DN100 PN16 EN 1092-1
2. SECONDARY CIRCUIT OUTLET - 1x DN100 PN16 EN 1092-1
3. VENTILATION DUCT - OUTLET
4. VENTILATION DUCT - INLET
5. EXHAUST GAS OUTLET - DN250
6. GAS CONNECTION - DN100 PN10 EN 1092-1
7. POWER CABLE ENTRANCE - 1350x300mm
8. CONDENSATE OUTLET - DN25 PN10 EN 1092-1

OPERATING WEIGHT OF THE INSTALLATION 21860 kg

NADŘAZENÝ VÝKRES/PARENT DRW.	PROMĚTÁNÍ/PROJECTION	TOLEROVÁNÍ/TOLERATION ISO 8015	POVRCHOVÁ ÚPRAVA/SURFACE FINISH	HMOTNOST/MASS [kg]
POZICE/ NR. ITEM	ODJEHLENO/DEBURRING	PŘESNOST/ACCURACY ISO 2768 mK	MĚŘÍTKO/SCALE 1:50	20560
RADA/CHP TYPE KE-MBG 500-BS	KRESLIL/DESIGNED BY: SAŠA WOLFOVÁ	DATUM/DATE: 22.11.2023	REVIZE/REVISION: 22.11.2023	ČÍSLO/NR.# 0
NAZEV PROJEKTU/PROJECT NAME 231029	SCHVÁLIL/APPROVED BY: PETR ŠEBESTA	NAZEV DOKUMENTU/DRAWING TITLE: PRELIMINARY DIMENSIONAL DRAWING		
MATERIAL/MATERIAL:		C. VÝKRESU/DRAWING NUMBER: 231029-01_000		
POLOTOVAR/STOCK PART:		A2		



This drawing is our property.  
It can't be reproduced  
or communicated without our written agreement.