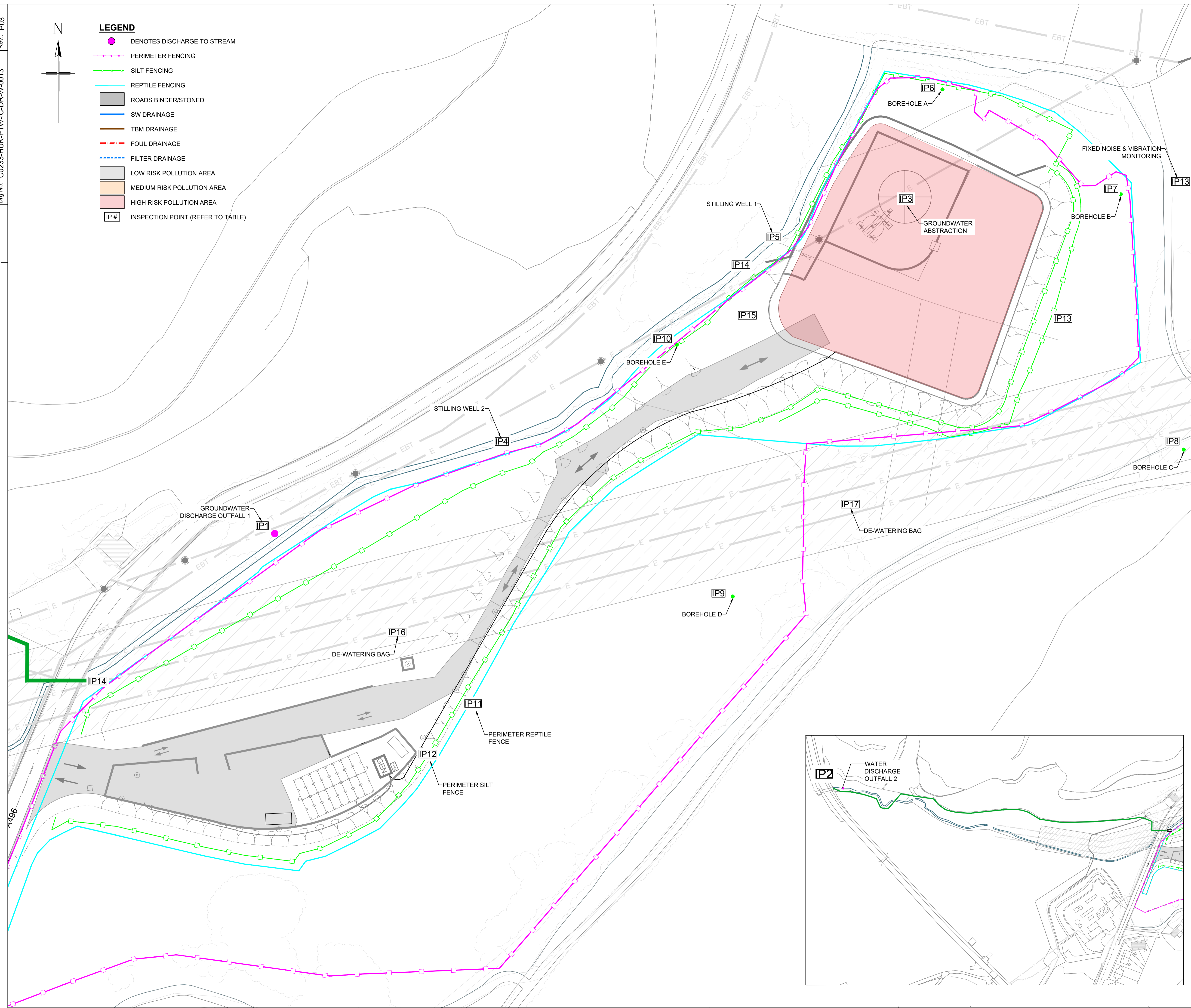


**LEGEND**

- DENOTES DISCHARGE TO STREAM
- PERIMETER FENCING
- SILT FENCING
- REPTILE FENCING
- ROADS BINDER/STONED
- SW DRAINAGE
- TBM DRAINAGE
- FOUL DRAINAGE
- FILTER DRAINAGE
- LOW RISK POLLUTION AREA
- MEDIUM RISK POLLUTION AREA
- HIGH RISK POLLUTION AREA
- IP # INSPECTION POINT (REFER TO TABLE)



- NOTES:**
1. ALL DIMENSIONS IN METRES UNLESS SHOWN OTHERWISE
  2. DO NOT SCALE FROM DRAWINGS
  3. THIS DRAWING SHALL BE READ IN CONJUNCTION WITH THE SPECIFICATIONS AND ALL RELEVANT
  4. ALL WORKMANSHIP AND MATERIALS SHALL BE IN ACCORDANCE WITH THE RELEVANT SPECIFICATIONS

Monitoring Points			
Inspection Point	Description	Permit Reference	Monitoring Criteria
1	Groundwater Discharge Outfall 1	NRW permitted discharge of Groundwater up to 120m <sup>3</sup> /day. (NRW ref. WA/065/0003/0003 dated 13-01-23). Groundwater Investigation Consent (GIC) up to 754m <sup>3</sup> /day (NRW ref. WA-065-0003-0003 dated 06-02-24)	Visual water quality Record water quality and daily discharge volume. 120m <sup>3</sup> /day limit for abstraction permit and 754m <sup>3</sup> /day limit for GIC. 2mm fish screen on outlet.
2	Process Water Discharge Outfall 2	NRW discharge consent for treated water up to 754m <sup>3</sup> /day (NRW ref. EPR/D831/902V dated 23-02-23)	Visual water quality and daily discharge volume. 2mm fish screen on outlet
3	Groundwater Abstraction	NRW Land Drainage ref. Harlech & Maestwrog/2023/01 issued 14-03-23	Record daily abstraction volume + monitoring borehole water levels hourly and still well levels.
4	Stilling Well 1	NRW Land Drainage ref. Harlech & Maestwrog/2023/02 issued 26-06-23	
5	Stilling Well 2	NRW ref. EPR/D831/902V dated 23-02-23). Groundwater Investigation Consent (GIC) up to 754m <sup>3</sup> /day (NRW ref. WA-065-0003-0003 dated 06-02-24)	
6	Monitoring Borehole A		
7	Monitoring Borehole B		
8	Monitoring Borehole C		
9	Monitoring Borehole D		
10	Monitoring Borehole E		
11	Perimeter Reptile Fence		Biweekly visual check
12	Perimeter Silt Fence		Biweekly visual check
13	Fixed Noise and Vibration Monitoring		Monthly report
14	Existing Ditch Outfall		Twice daily visual check. Close shut off valve if discoloured discharge. Start dewatering pump discharge to dewatering bag(s) IP16 & IP17
15	Pump		Twice daily visual check to confirm operational
16 & 17	Dewatering Bags		Twice daily check when operating to confirm functioning properly.

P03	DAI	DGM	DMY	04.04.24	IP'S MOVED AS PER COMMENTS
P02	DAI	DGM	DGM	02.04.24	INSPECTION POINTS ADDED
P01	DAI	DGM	DGM	-	ISSUED FOR INFORMATION
Rev	By	Chk'd	Auth'd	Data	Description



**HOCHTIEF**  
 Head Office:  
 Whitehill House  
 Windmill Hill Business Park  
 Whitehill Way  
 Swindon  
 SN5 6PE  
 Tel: 01793 755555  
 Email:  
 CADservices@hochtief.co.uk

Project:  
**SNOWDONIA VIP**

Title:  
**TEMPORARY WORKS ENVIRONMENTAL INSPECTION CHECK POINTS**

Drawn by: DAI Date: 22.01.24	Checked by: DGM Date: 22.01.24	Approved by: DGM Date: 22.01.24
---------------------------------	-----------------------------------	------------------------------------

Drawing Scale & Paper Size: 1:500@A1  
 CAD Filename: C0233-HUK-PTW-IC-DR-W-0013

Drawing status: **FOR INFORMATION**

Drawing No.: C0233-HUK-PTW-IC-DR-W-0013	Rev.: P03
---	-----------