

	<p>Q3 Landfill Groundwater Sampling Results 2024 Dow Silicones UK Ltd Barry</p>	<p>Quarter 3 2024</p>
---	---	-----------------------

## **Q3-2024 Landfill Groundwater Sampling Results**

The impact of bulk storage of materials on the landfill and its performance was monitored in quarter 3 of 2024 and the results shown in this report.

The quarterly sampling plan satisfies both SPMP (Site Protection and Monitoring Programme) and Landfill licence requirements (ref URS design of a site monitoring programme, 44382681, July 2006 and Dow Silicones UK landfill CMS review, 49310733, October 2008).

This report provides sample results for boreholes and surface water bodies. They have been assessed for copper and Trimethylsilanol (TMS) concentrations.

- The boreholes ~~LF1, LF4, LF6, LF7, E1s, E1m, E1d, E2s, E2d, E4s, E4d~~, 210, 312, 412, A2d, LF10S, ~~LF10M~~, LF10D, ~~LF11S~~, LF11M, LF11D, LF12S, LF12D, ~~LF13S, LF13M, LF13D~~, ~~LF14S~~, LF14M, LF14D, CP1S, CP1M, CP1D, CP2S, CP2M, CP2D
- The surface water bodies are Cadoxton pond (North), Cadoxton pond (South), Freshwater pond, Cadoxton River SW2, Cadoxton River SW3 and the Timber Pond.

The graphs illustrated have been prepared from borehole and surface water samples taken for Q3-2007 up till Q3-2024

The following boreholes were lost and are no longer sampled – but the historical data is still in this report for reference. Alternative boreholes were added in 2016 & 2018 to provide additional data because of the unavailability of these ones: E1s, E1m, E1d, E2S, E2D, E4S, E4D, LF1, LF4, LF6, LF13S, LF13M, LF13D.

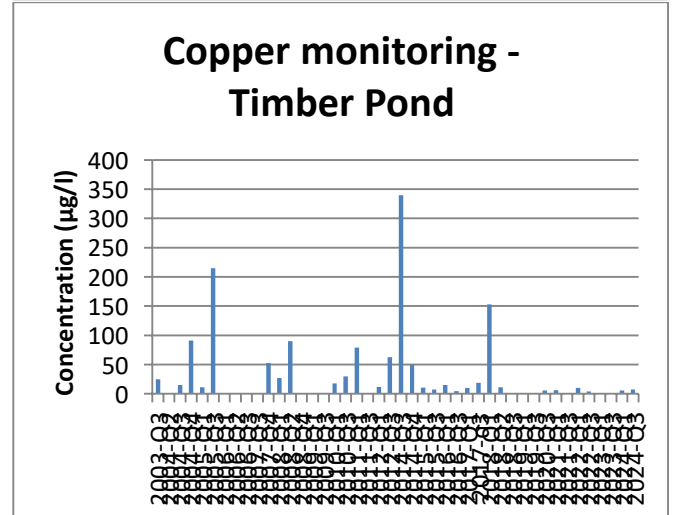
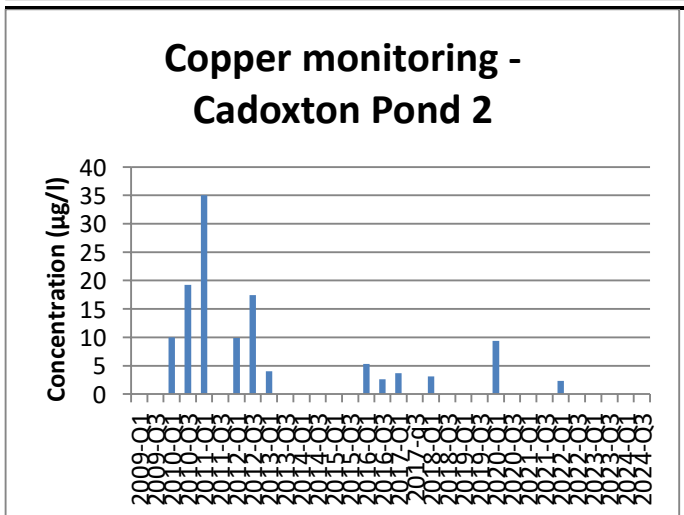
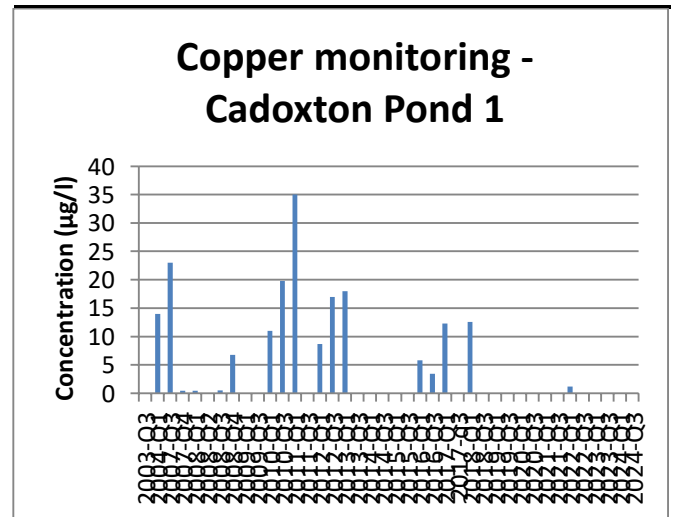
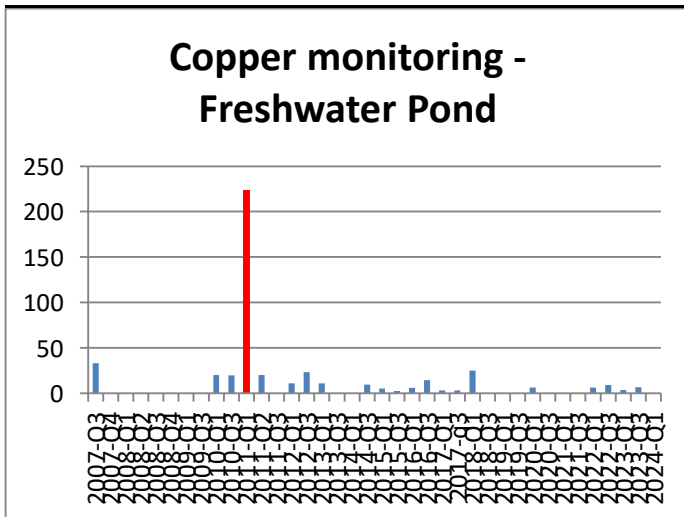
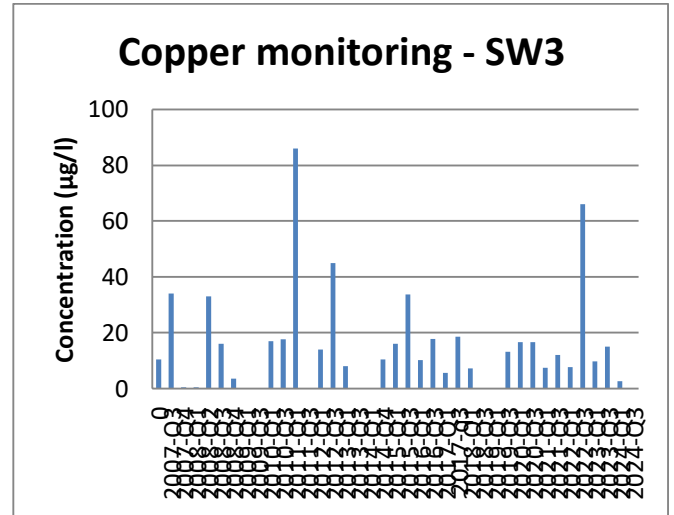
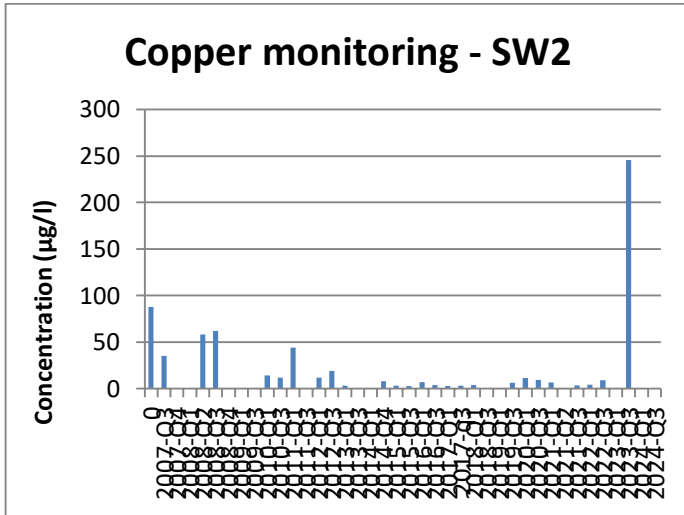
Some of the boreholes were not fully analysed during Q3 2024 due to being inaccessible, due to being unable to draw a sample or enough sample for metals. These were LF11S, LF12S, CP1S, CP1M and Freshwater pond. These boreholes show no results on the charts.



### Leachate graphs.

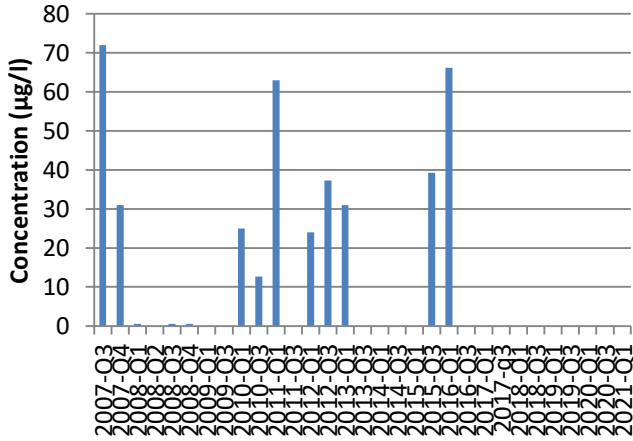
#### Copper

The detectable limit for Copper is 0.5 µg/l – any results below this will show on the graphs as 0

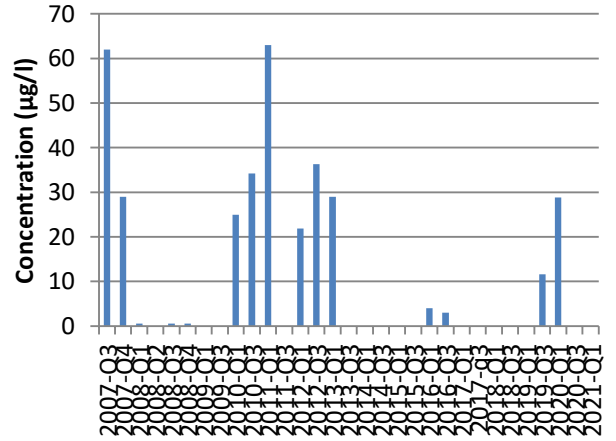




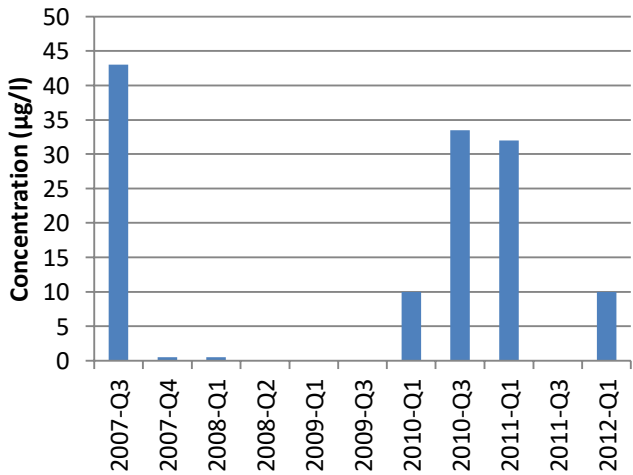
### Copper monitoring - E1M



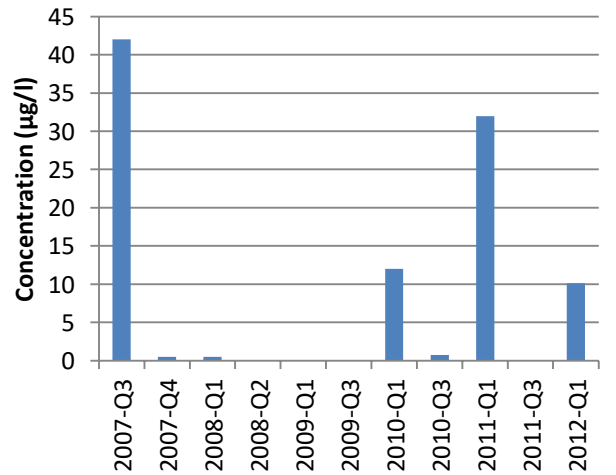
### Copper monitoring - E1D



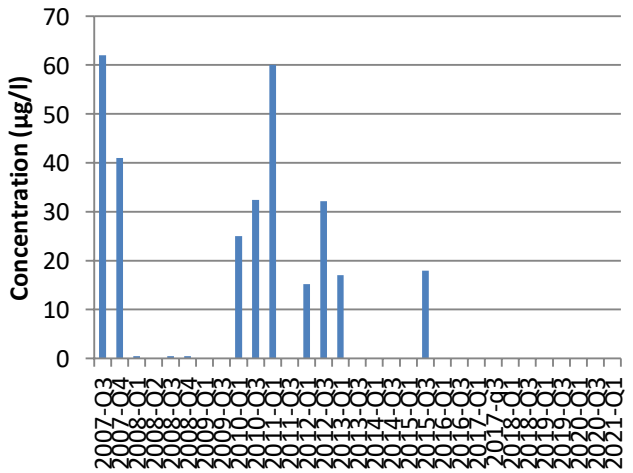
### Copper monitoring - E2S



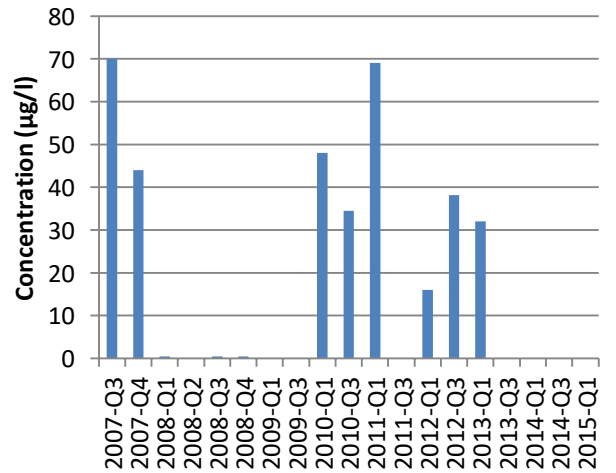
### Copper monitoring - E2D



### Copper monitoring - E1S

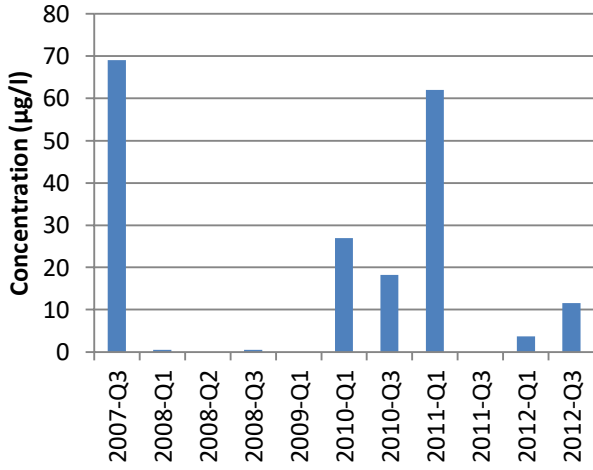


### Copper monitoring - E4S

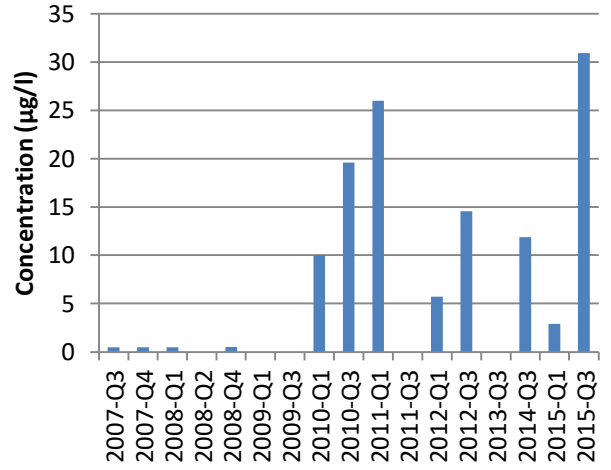




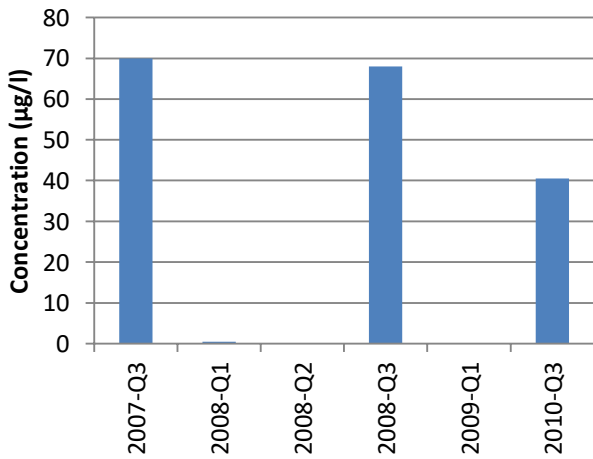
### Copper monitoring - LF1



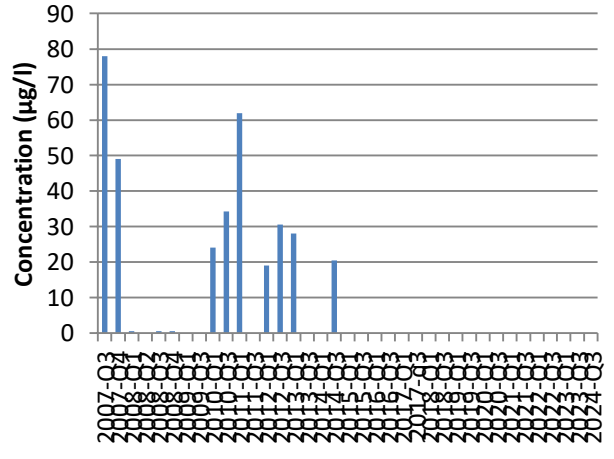
### Copper monitoring - LF4



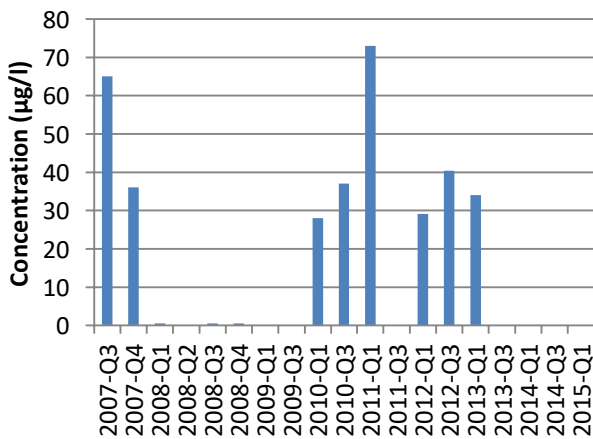
### Copper monitoring - LF6



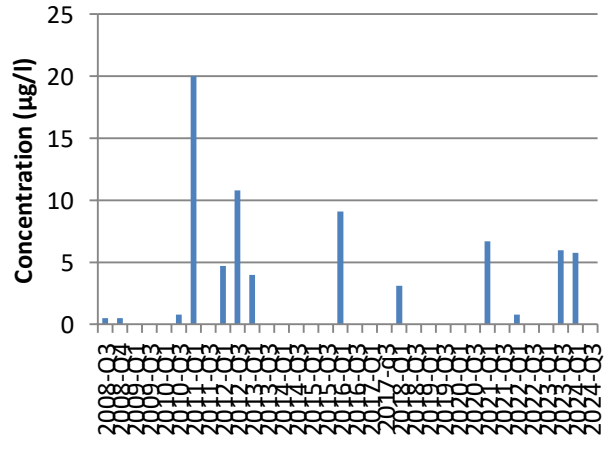
### Copper monitoring - LF7



### Copper monitoring - E4D

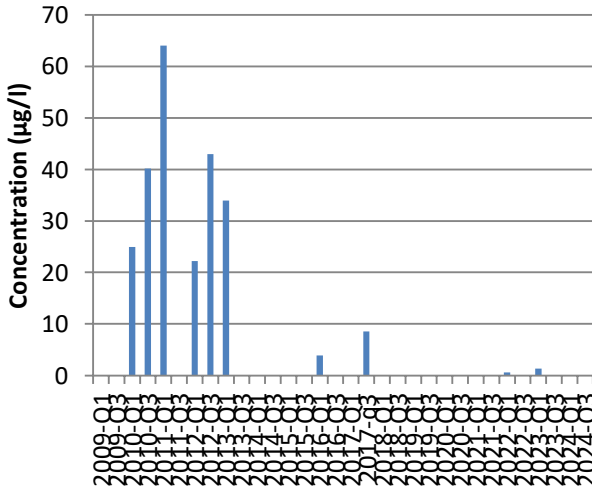


### Copper monitoring - BH 210

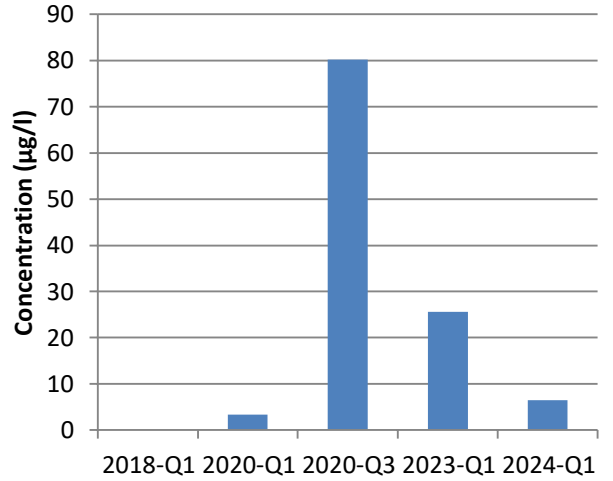




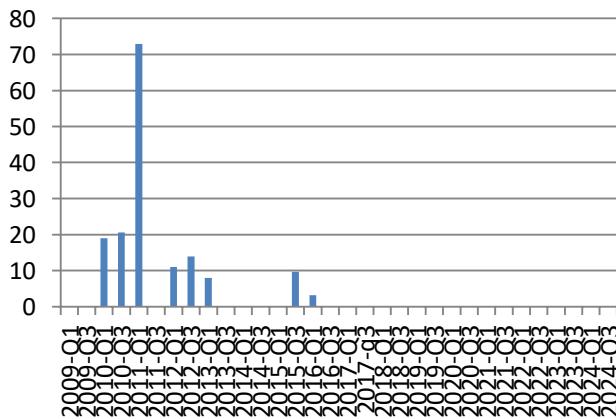
### Copper monitoring - BH 412



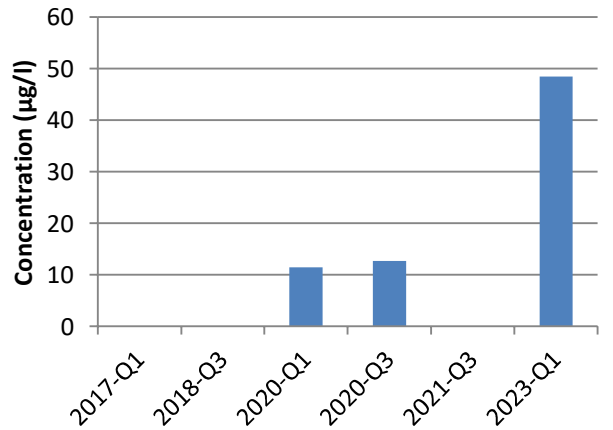
### Copper monitoring - CP1S



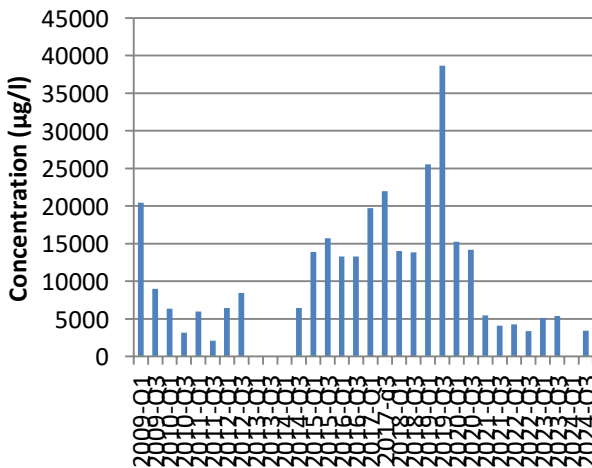
### Copper monitoring - BH 312



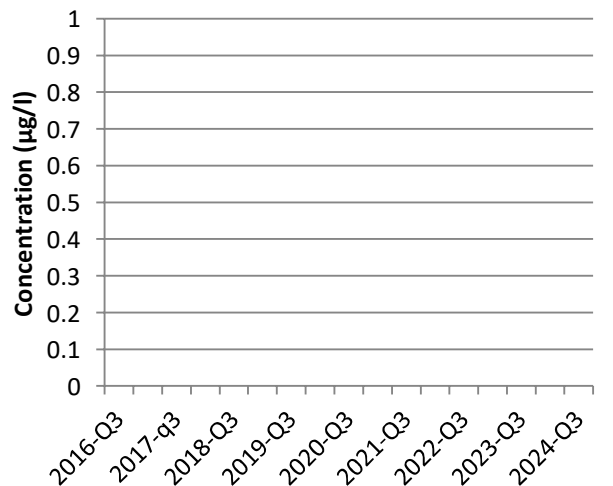
### Copper monitoring - CP1M



### Copper monitoring - A2D

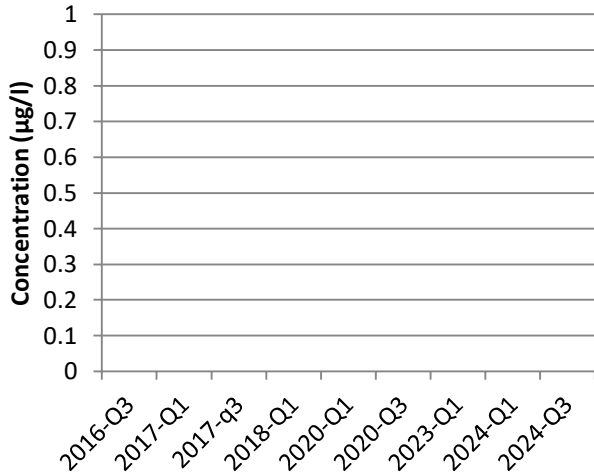


### Copper monitoring - CP1D

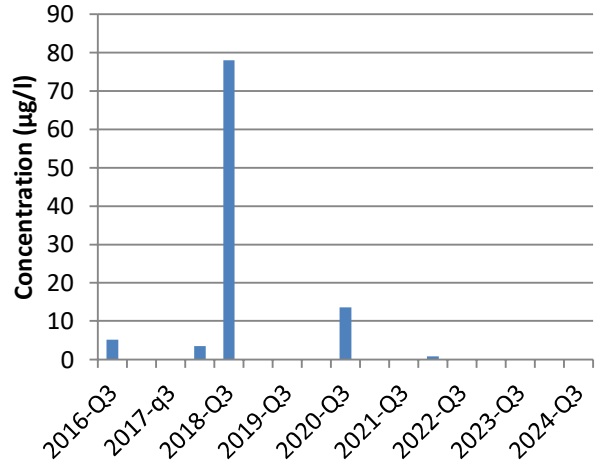




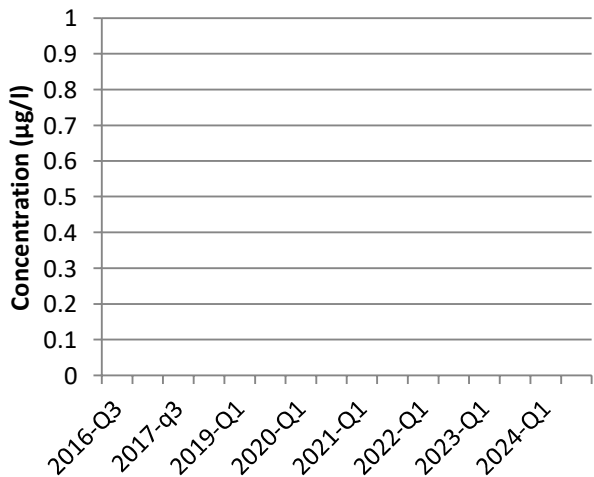
**Copper monitoring - CP2S**



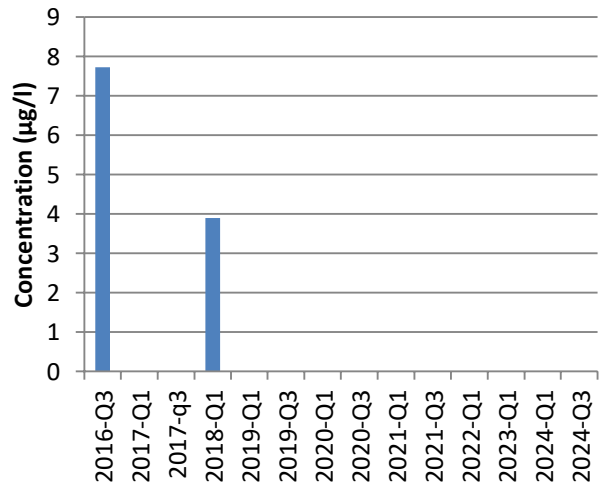
**Copper monitoring - LF10S**



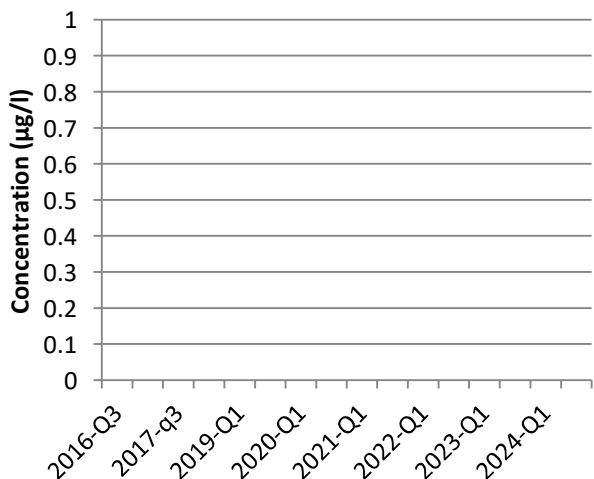
**Copper monitoring - CP2M**



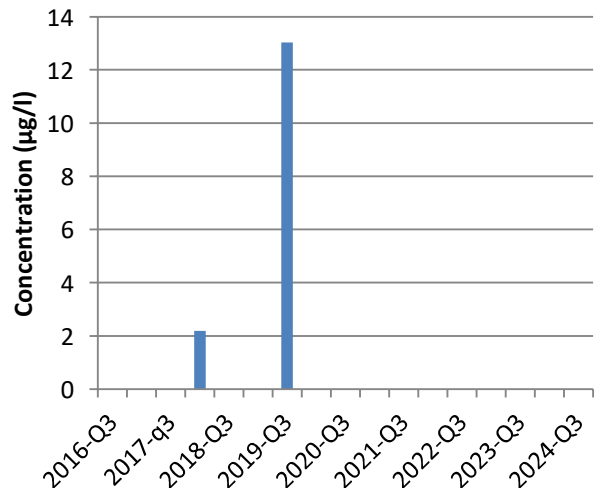
**Copper monitoring - LF10M**



**Copper monitoring - CP2D**

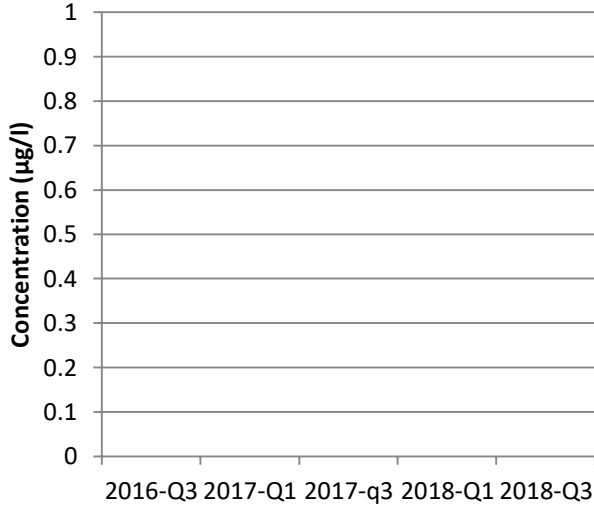


**Copper monitoring - LF10D**

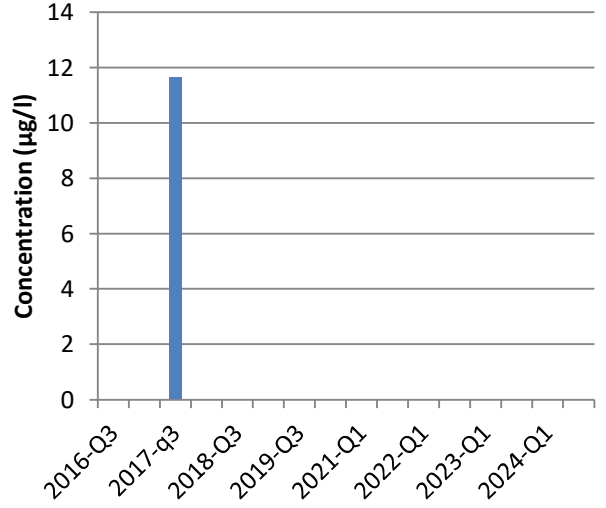




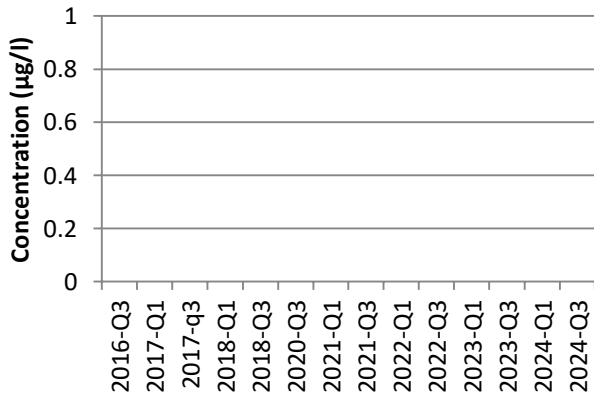
**Copper monitoring - LF11S**



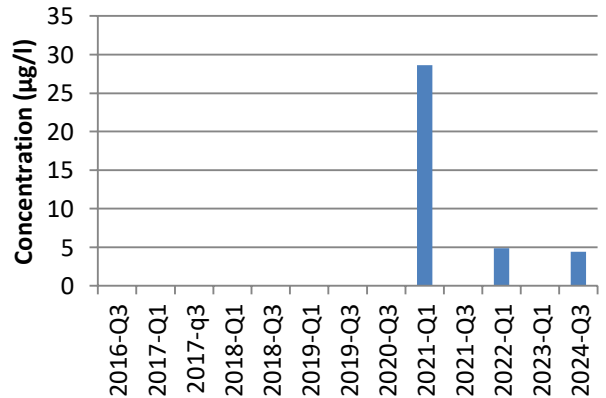
**Copper monitoring - LF12M**



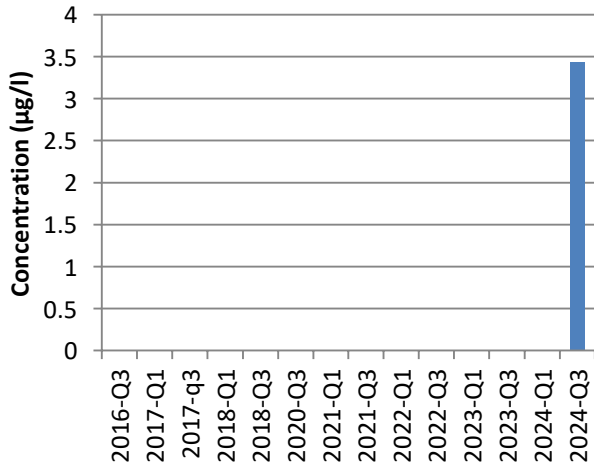
**Copper monitoring - LF11M**



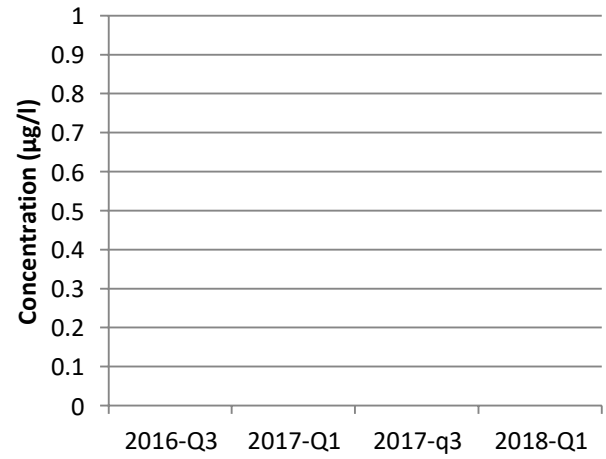
**Copper monitoring - LF12D**



**Copper monitoring - LF11D**

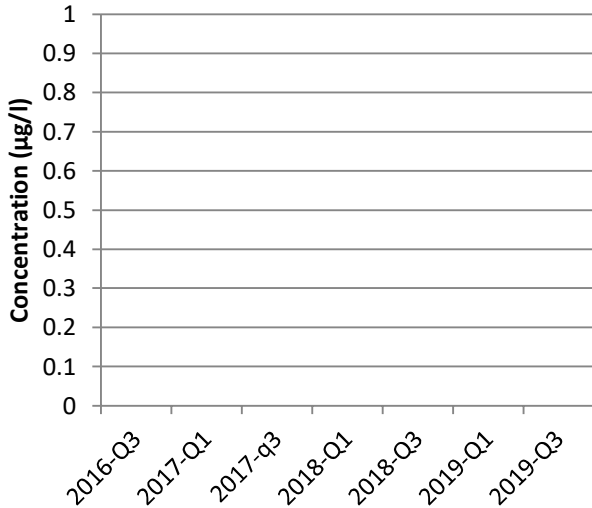


**Copper monitoring - LF13S**

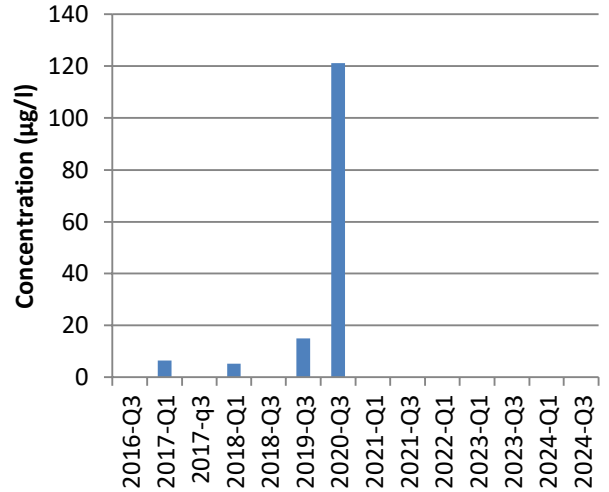




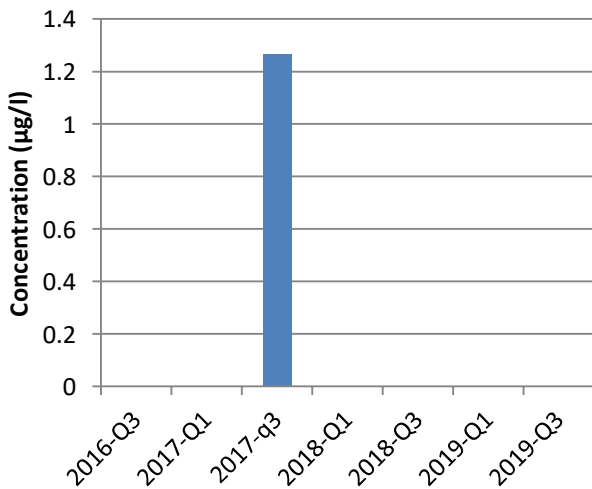
**Copper monitoring - LF13M**



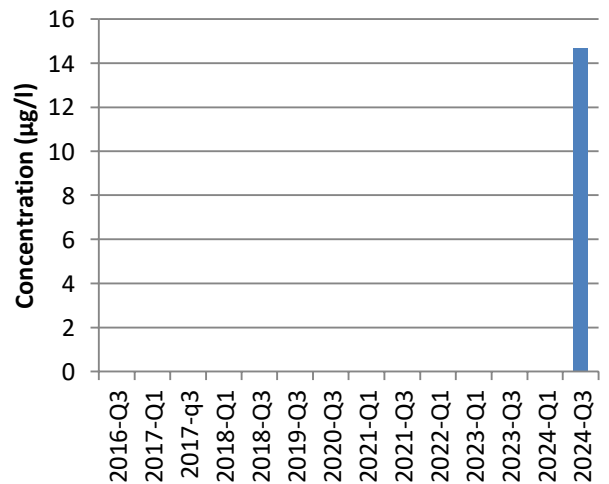
**Copper monitoring - LF14M**



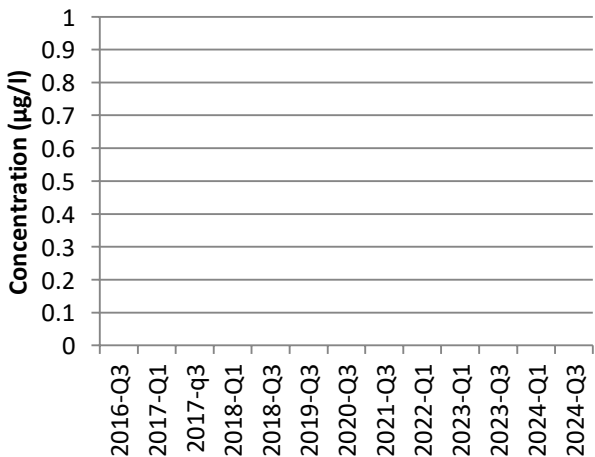
**Copper monitoring - LF13D**



**Copper monitoring - LF14D**



**Copper monitoring - LF14S**



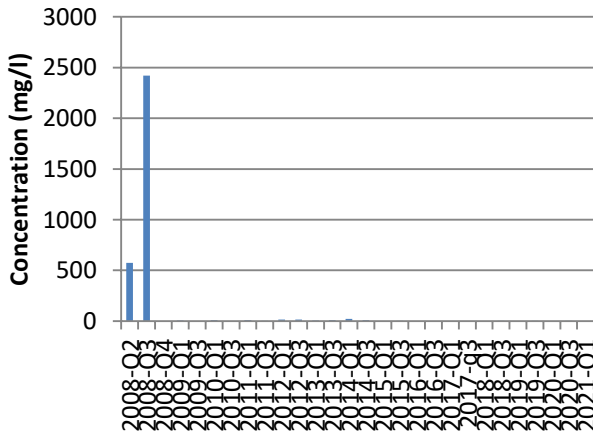
**Comments**

1. Results from the sampling this quarter fall within the normal range of the previous sampling data.
2. No boreholes displayed significant values for copper.

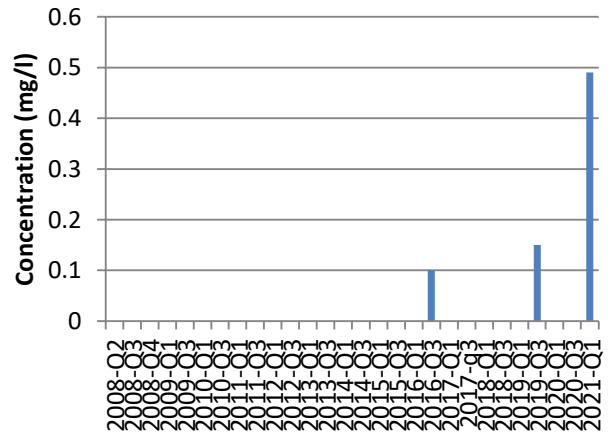




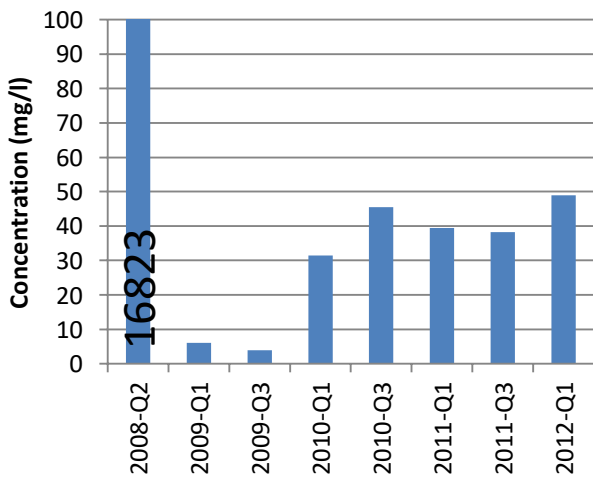
### TMS monitoring - E1M



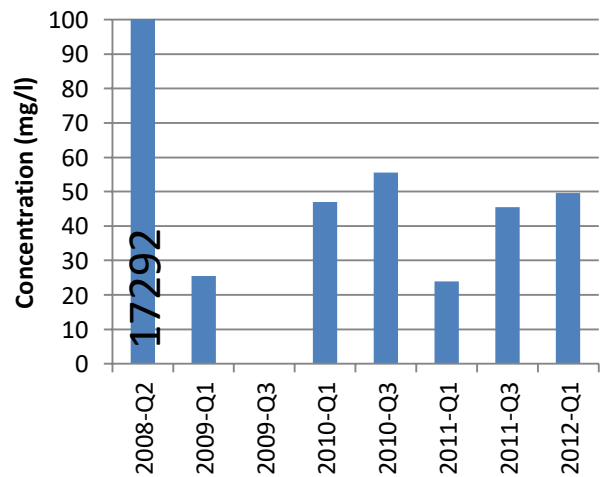
### TMS monitoring - E1D



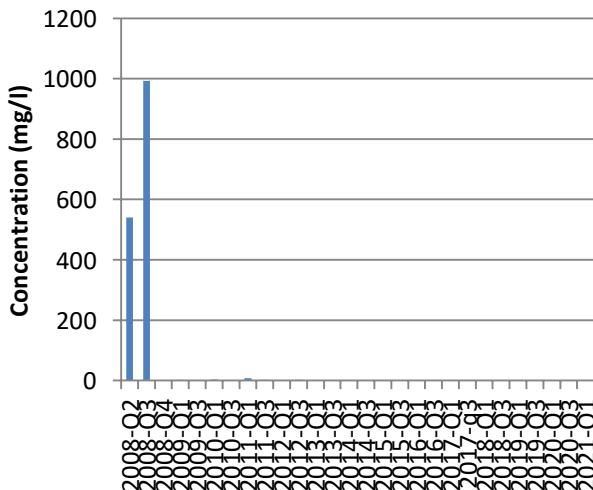
### TMS monitoring - E2S



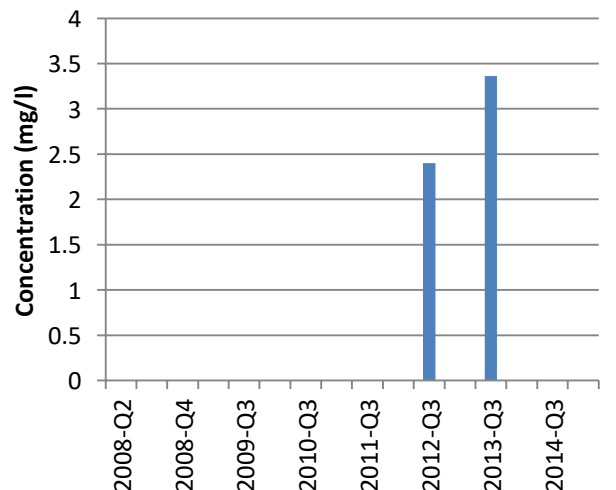
### TMS monitoring - E2D



### TMS monitoring - E1S

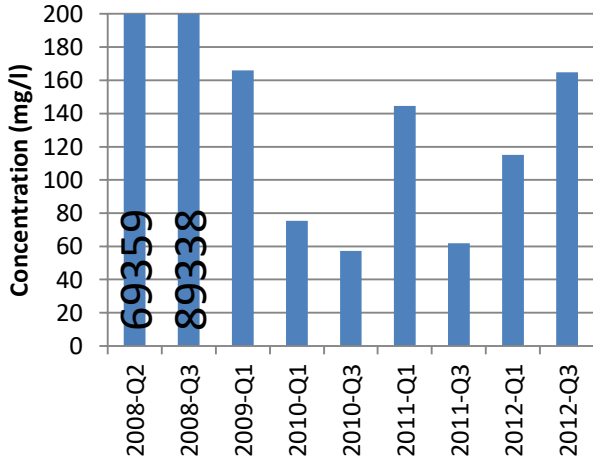


### TMS monitoring - E4S

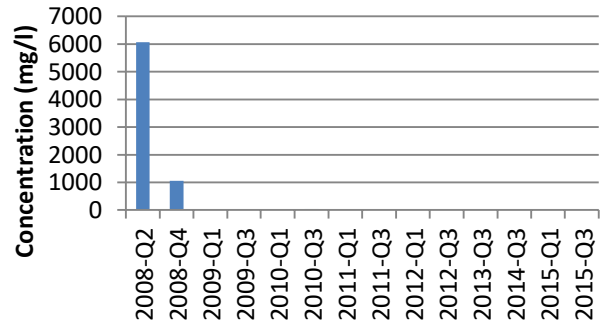




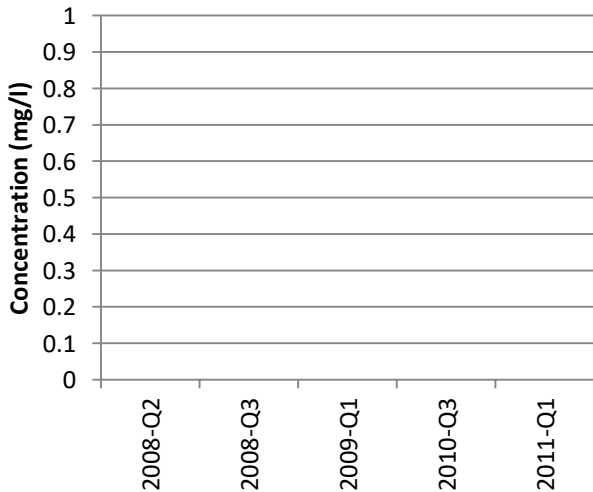
### TMS monitoring - LF1



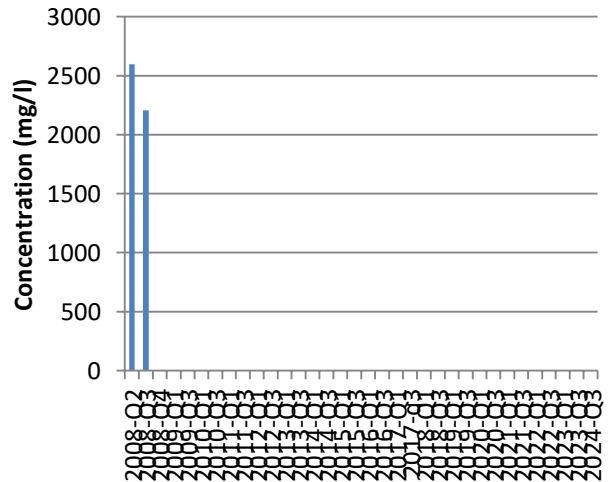
### TMS monitoring - LF4



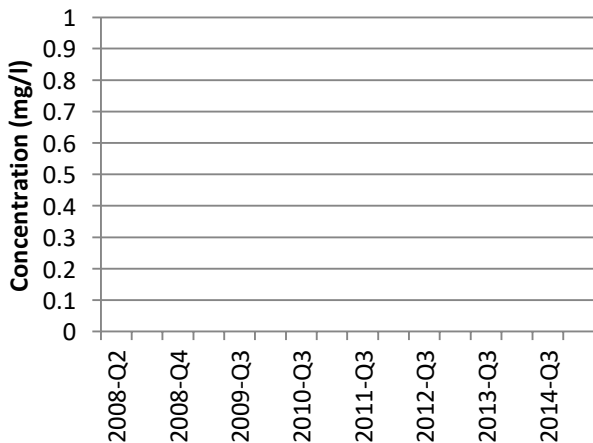
### TMS monitoring - LF6



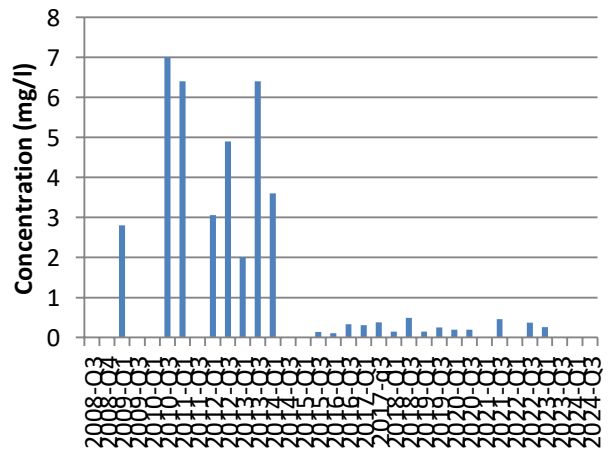
### TMS monitoring - LF7



### TMS monitoring - E4D

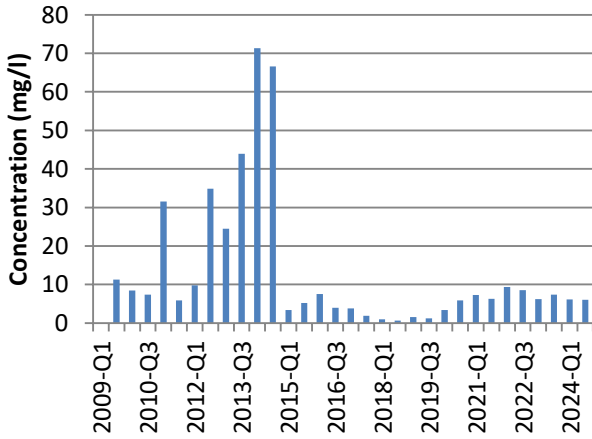


### TMS monitoring - BH 210

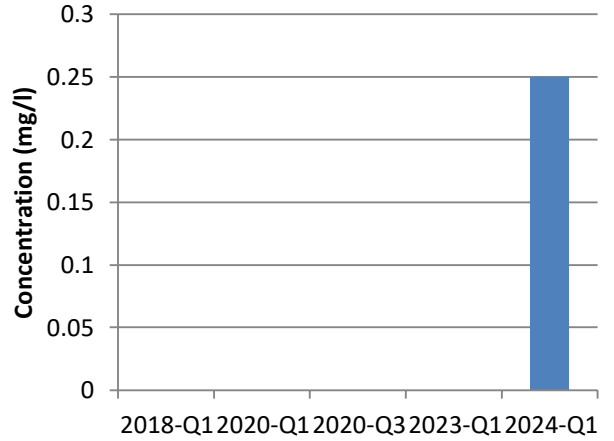




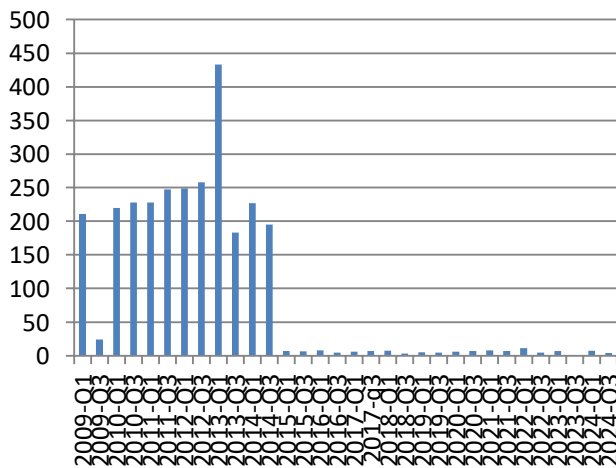
**TMS monitoring - BH 412**



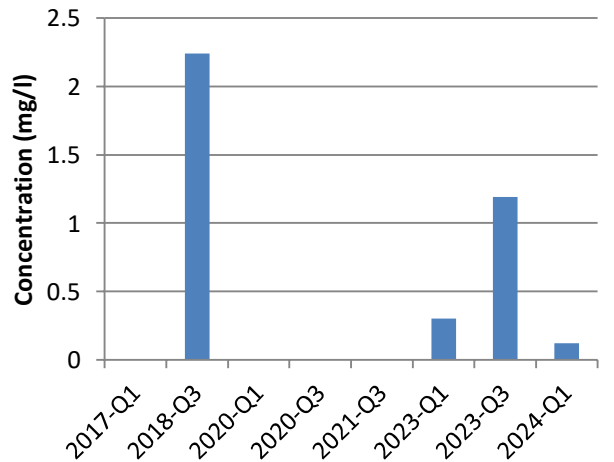
**TMS monitoring - CP1S**



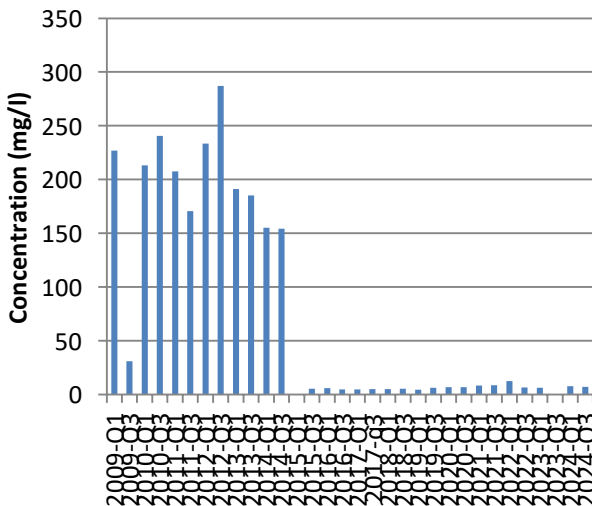
**TMS monitoring - BH 312**



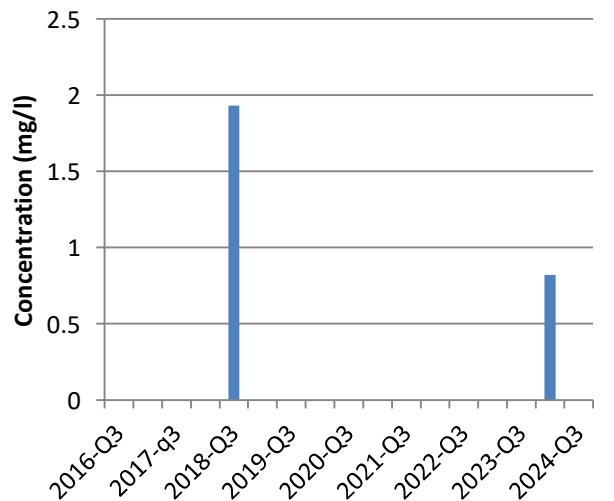
**TMS monitoring - CP1M**

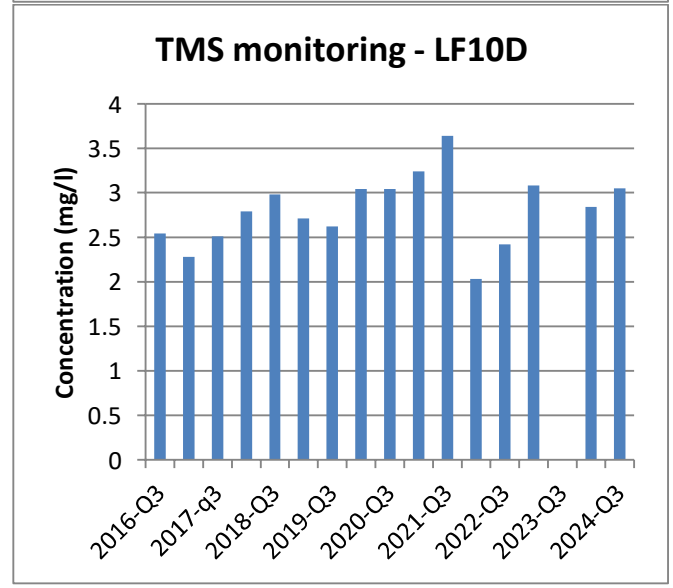
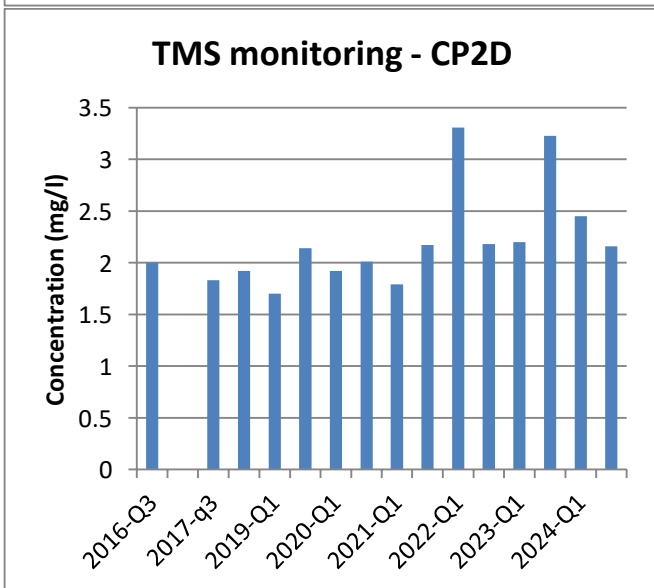
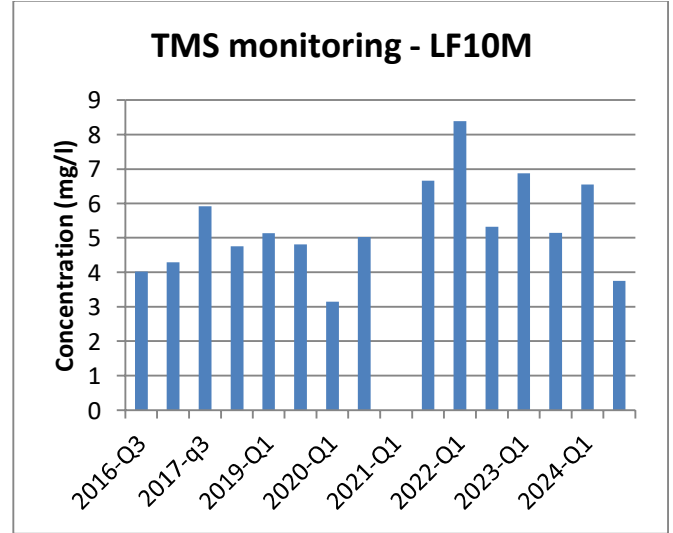
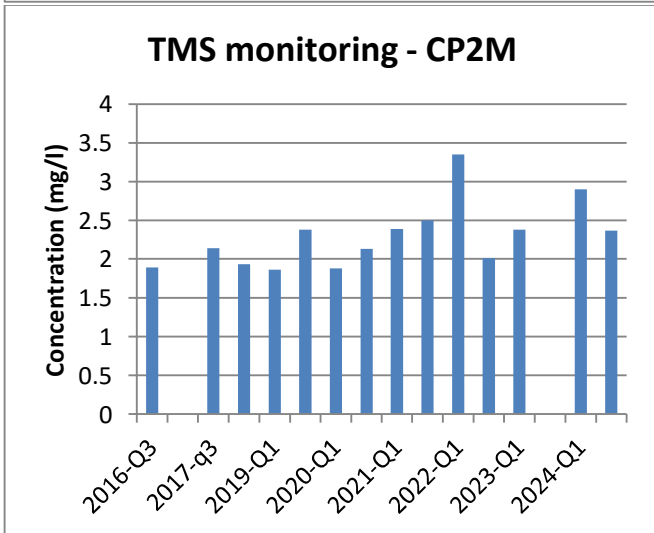
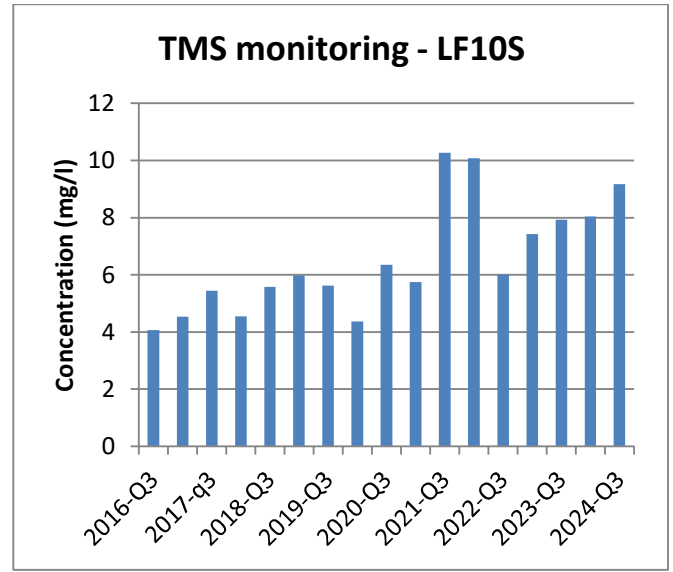
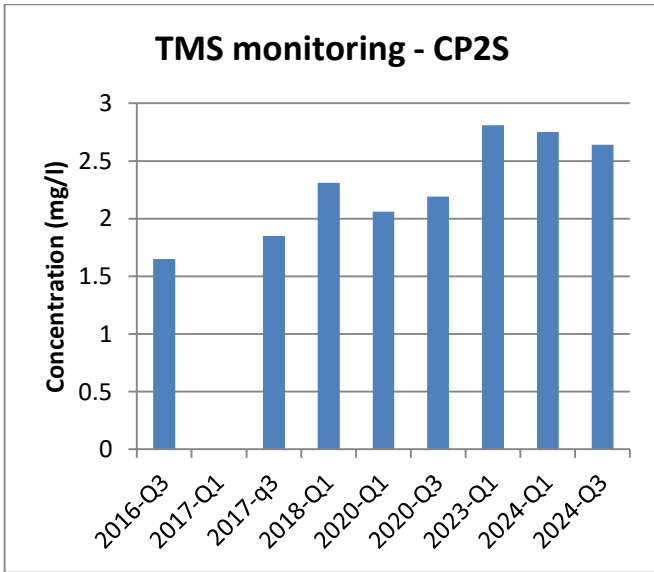


**TMS monitoring - A2D**



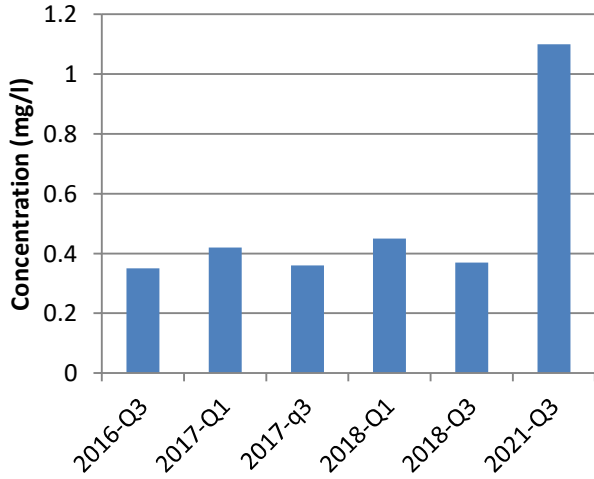
**TMS monitoring - CP1D**



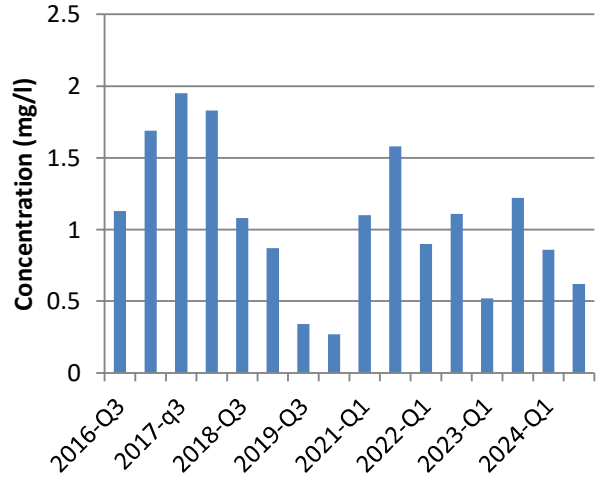




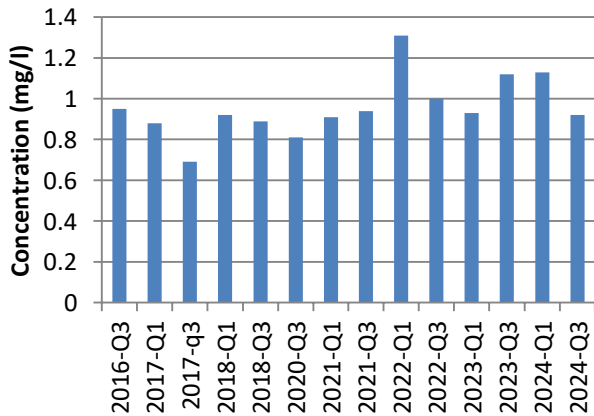
**TMS monitoring - LF11S**



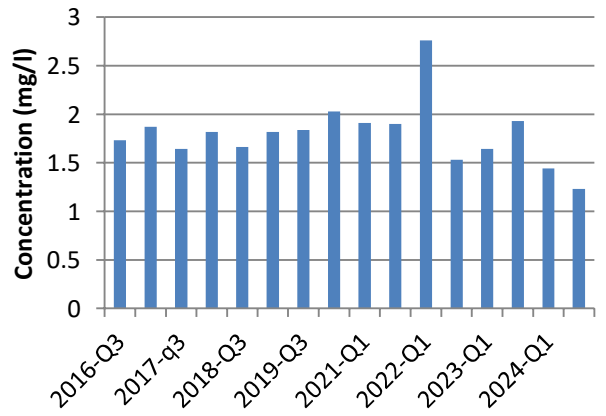
**TMS monitoring - LF12M**



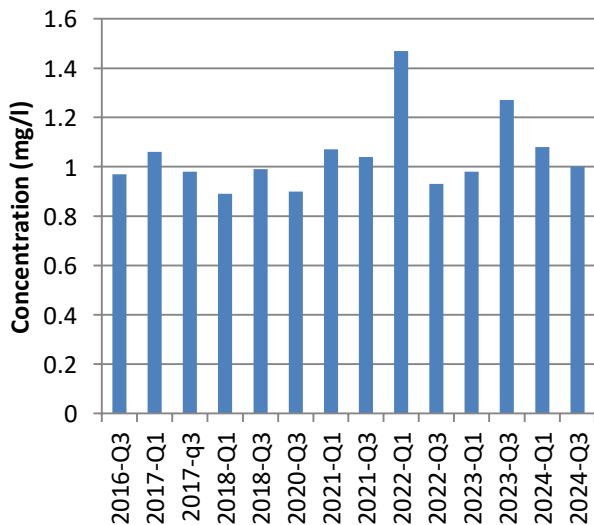
**TMS monitoring - LF11M**



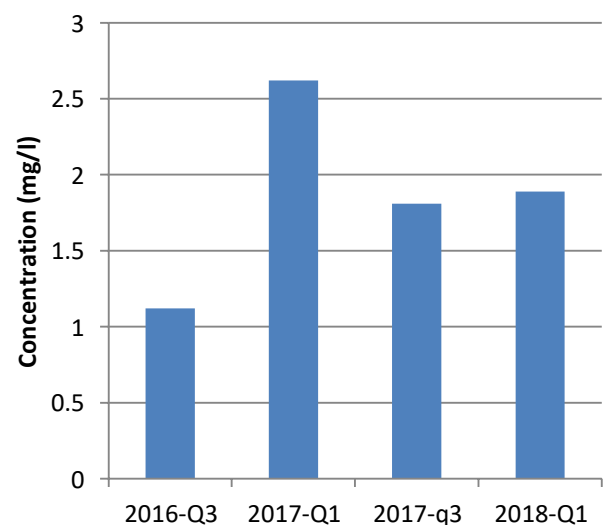
**TMS monitoring - LF12D**



**TMS monitoring - LF11D**

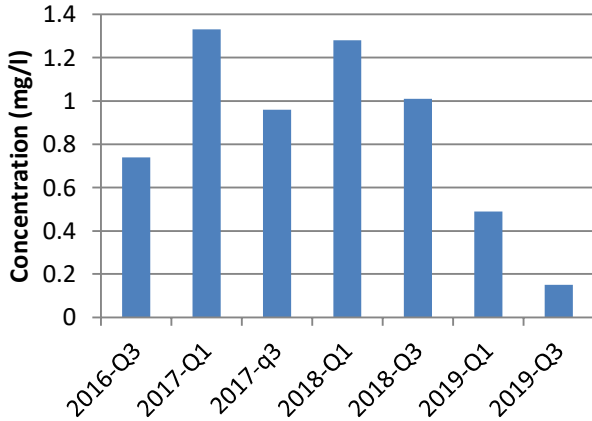


**TMS monitoring - LF13S**

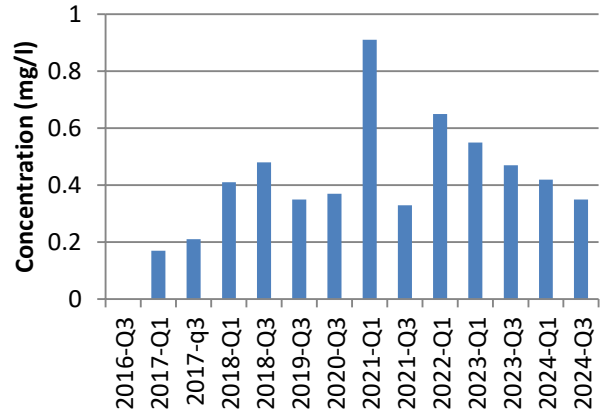




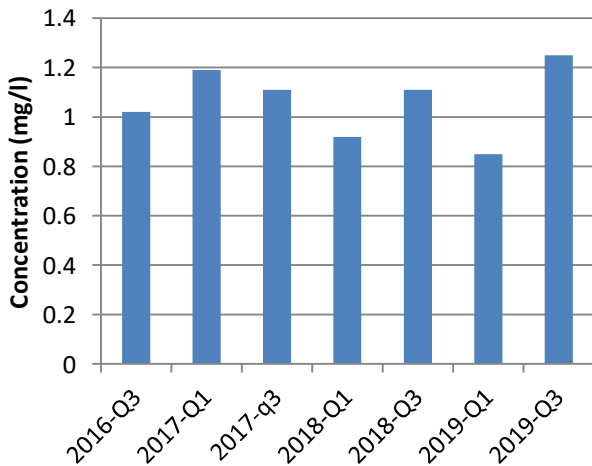
**TMS monitoring - LF13M**



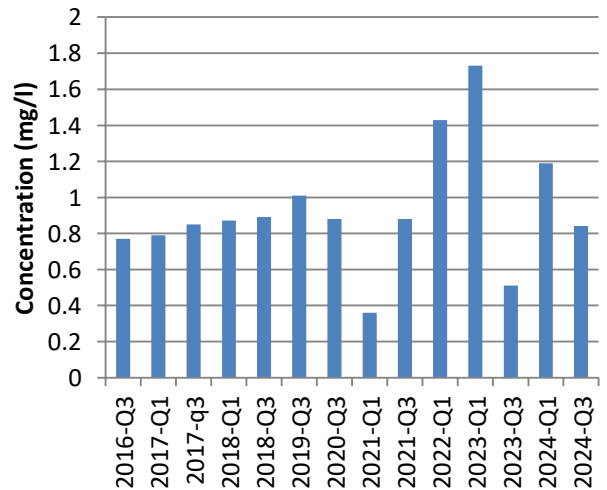
**TMS monitoring - LF14M**



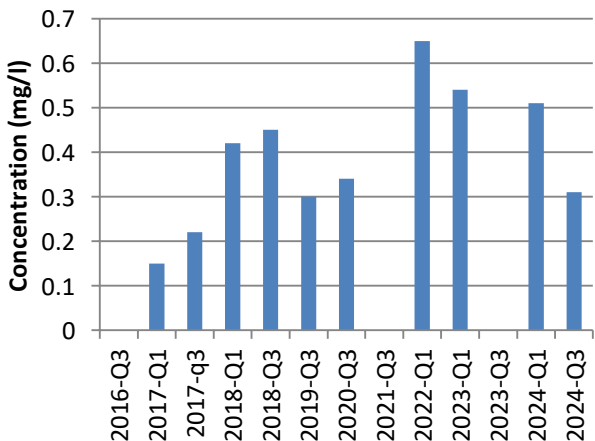
**TMS monitoring - LF13D**



**TMS monitoring - LF14D**



**TMS monitoring - LF14S**



**Comments**

1. No boreholes show significant TMS concentrations this quarter.
2. The results of sampling the boreholes shows the usual fluctuations.

**The next report is to be completed for the next 6months.**