

RevNo	REVISION NOTE	DATE	DRAWN	CHECKED	APPROVED
04	Certified, general update, cones added	09/08/2025	NOM	JNS	NOM
03	Certified, general update	07/08/2025	NOM	JNS	NOM
02	Certified, see revision clouds	04/25/2025	NOM	JNS	MSA
01	Certified	04/17/2025	NOM	JNS	MSA

MATERIAL CODE		
CODE	NAME	
VH10HT	PN10 AISI 304L	
VH10HA	PN10 AISI 304L	
VH25HA	PN25 AISI 304L	
VH40HA	PN40 AISI 304L	

VALVE TYPE CODE (acc. to SSG)		
CODE	NAME	BODY MAT.
454	BALL VALVE	AISI 304
204	BUTTERFLY VALVE	CARBON STEEL
044	KNIFE GATE VALVE	CARBON STEEL
1154	SAMPLE VALVE	AISI 304
654	SWING CHECK VALVE	AISI 304
554	DISC CHECK VALVE	AISI 304
1054	SAFETY VALVE	AISI 304

FLOW SUBSTANCES	
MEDIA	NAME
P95	PULP BLEACHED DRIED DISSOLVED SULPHATE SOFTWOOD
P96	PULP BLEACHED DRIED DISSOLVED SULPHATE HARDWOOD
P91	PULP BROKE, MIX OF P95 & P96
P85	PULP, MACHINE FURNISH, BLEACHED
B85	WHITE WATER, PAPER MACHINE
B86	WHITE WATER, CLEAR FILTRATE
B88	WHITE WATER, SUPERFILTRATE
W03	WATER, MECHANICALLY TREATED
G70	AIR, VACUUM SYSTEM
G75	COMPRESSED AIR, MILL
G76	COMPRESSED AIR, INSTRUMENT
D10	EFFLUENT FLOOR, DRAINAGE
S01	STEAM, L.W.E., 0.5 MPa
S02	STEAM, L.W.E., 0.5-1.3 MPa
C10	CONDENSATE, LIVE STEAM
A01	WET STRENGTH
A02	SOFTENER
A03	ANTI BACTERIAL
A04	DEFOAMER
A05	WIRE/FELT PASSIVATION
A06	FLOCCULANT
A07	MOFFER
A08	ADHESIVE
A09	RELEASE
A10	BODIE

Pipe number  
Dim. - Media code - Pipe specification

NOM FLOW kg/min / cons. % / LPM  
MAX FLOW (kg/min / cons. % / LPM)  
**20 / 4 / 505**  
**(24 / 4 / 600)**

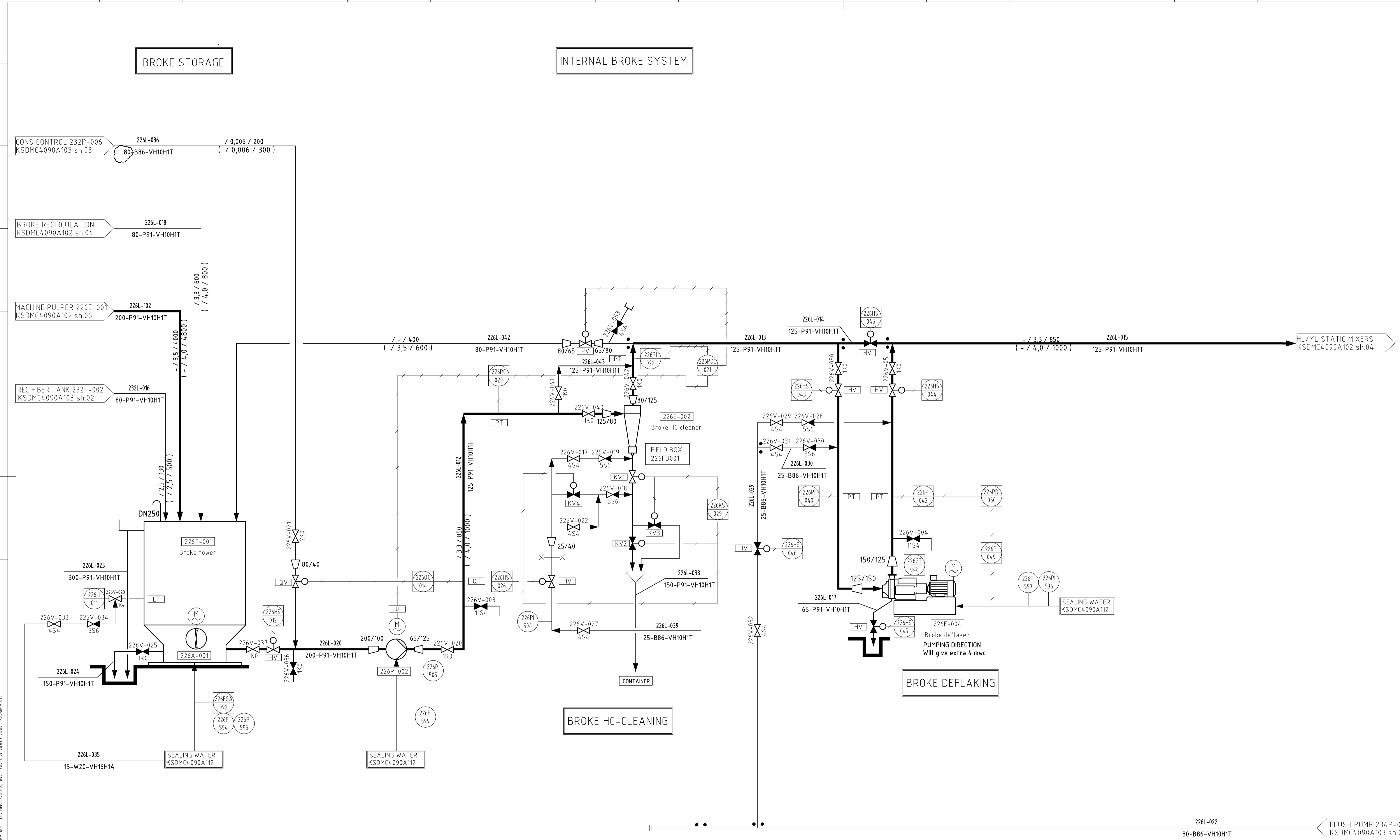
CONNECTED TO DCS SYSTEM LOCAL

TM PRODUCTION 209 BDT/D
PRODUCTION SPLIT (MAX/LINE):
SOFTWOOD 105 BDT/D
HARDWOOD 209 BDT/D
BROKE 40 BDT/D
RECYCLED BDT/D

DESIGN PRODUCTION 225.8 BDT/D "PROD." 17.5 G/M <sup>2</sup>
HARDWOOD 65 % 14.7 BDT/D
SOFTWOOD 30 % 68 BDT/D
BROKE 5 % 11 BDT/D

**Valmet**  
Certified  
Signature NOM  
Date 04/17/2025

Valmet	CUSTOMER NAME CONFIDENTIAL	CUSTOMER'S DRWG. NAME/FILE	SYSTEM AutoCAD
	LOCATION OF MILL UK	CUSTOMER'S POS. NUM.	
DRW. NUM. / PROJECT NUM. 4.090A	LANGUAGES /	SCALE 1:1	DRAWN ELN
DATE 2025-09-08	CHECKED JNS	DATE 2025-09-08	DATE 2025-09-08
APPROVED NOM	DATE 2025-09-08	DATE 2025-09-08	DATE 2025-09-08
TITLE VESTA INTERNAL BROKE SYSTEM	DOCUMENT ID KSDMC4090A102	SHEET 7/7	REVISION 04
REASON FOR ISSUE CERTIFIED			



ITEM NUMBER	226T-001	226A-001	226E-002	226P-002	226E-004
TECHNICAL DATA					
l/min, bar		SSF-60.80 - l/min	HC Cleaner150B - l/min	ACP65-31S.4S 1500 l/min	DF-0 - l/min
%-weight	4.0 %	4.0 %	4 %	3.5 %	4 %
t/d	300 m <sup>3</sup>			55 m wc	
DUTY, kW		Inst: 11 kW, 1500 rpm	Inst: .	Inst: 30 kW, 1500 rpm	Inst: 110 kW, 1500 rpm

THE INFORMATION CONTAINED HEREIN CONSTITUTES CONFIDENTIAL INFORMATION OF VALMET. IT IS THE PROPERTY OF VALMET AND IS NOT TO BE REPRODUCED, COPIED, OR DISCLOSED TO ANY THIRD PARTY WITHOUT THE PRIOR WRITTEN CONSENT OF VALMET TECHNOLOGIES, INC. OR ITS SUBSIDIARY COMPANY.