

WHITE WATER SYSTEM

Rev No	REVISION NOTE	DATE	DRAWN	CHECKED	APPROVED
04	Certified, cone dimension change	09/09/2025	NOM	JNS	NOM
03	Certified, cone dimension change	07/10/2025	NOM	JNS	NOM
02	Certified, general revision	05/16/2025	NOM	JNS	MSA
01	Certified	04/17/2025	NOM	JNS	MSA

FLOW SUBSTANCES	
MEDIA	NAME
P95	PULP BLEACHED DRIED DISSOLVED SULPHATE SOFTWOOD
P96	PULP BLEACHED DRIED DISSOLVED SULPHATE HARDWOOD
P91	PULP BROKE, MIX OF P95 & P96
P95	PULP, MACHINE FURNISH, BLEACHED
B85	WHITE WATER, PAPER MACHINE
B86	WHITE WATER, CLEAR FILTRATE
B88	WHITE WATER, SUPERFILTRATE
B89	WATER, MECHANICALLY TREATED
G70	AIR, VACUUM SYSTEM
G75	COMPRESSED AIR, MLL
G76	COMPRESSED AIR, INSTRUMENT
D10	EFFLUENT FLOOR, DRAINAGE
S01	STEAM, LIVE, 4.5 MPa
S02	STEAM, LIVE, 0.5-1.3 MPa
C10	CONDENSATE, LIVE STEAM
A101	WET STRENGTH
A102	SOFTENER
A103	ANTI-BACTERIAL
A104	DEFOMER
A105	WIRE/FELT PASSIVATION
A106	FLOCCULANT
A107	MOFFIER
A108	ADHESIVE
A109	RELEASE
A110	BROKE

MAX FLOW kg/min / cons. % / LPM
 NOM FLOW (kg/min / cons. % / LPM)

24 / 4 / 600
 (20 / 4 / 505)

CONNECTED TO DCS SYSTEM
 CONNECTED TO PLC SYSTEM

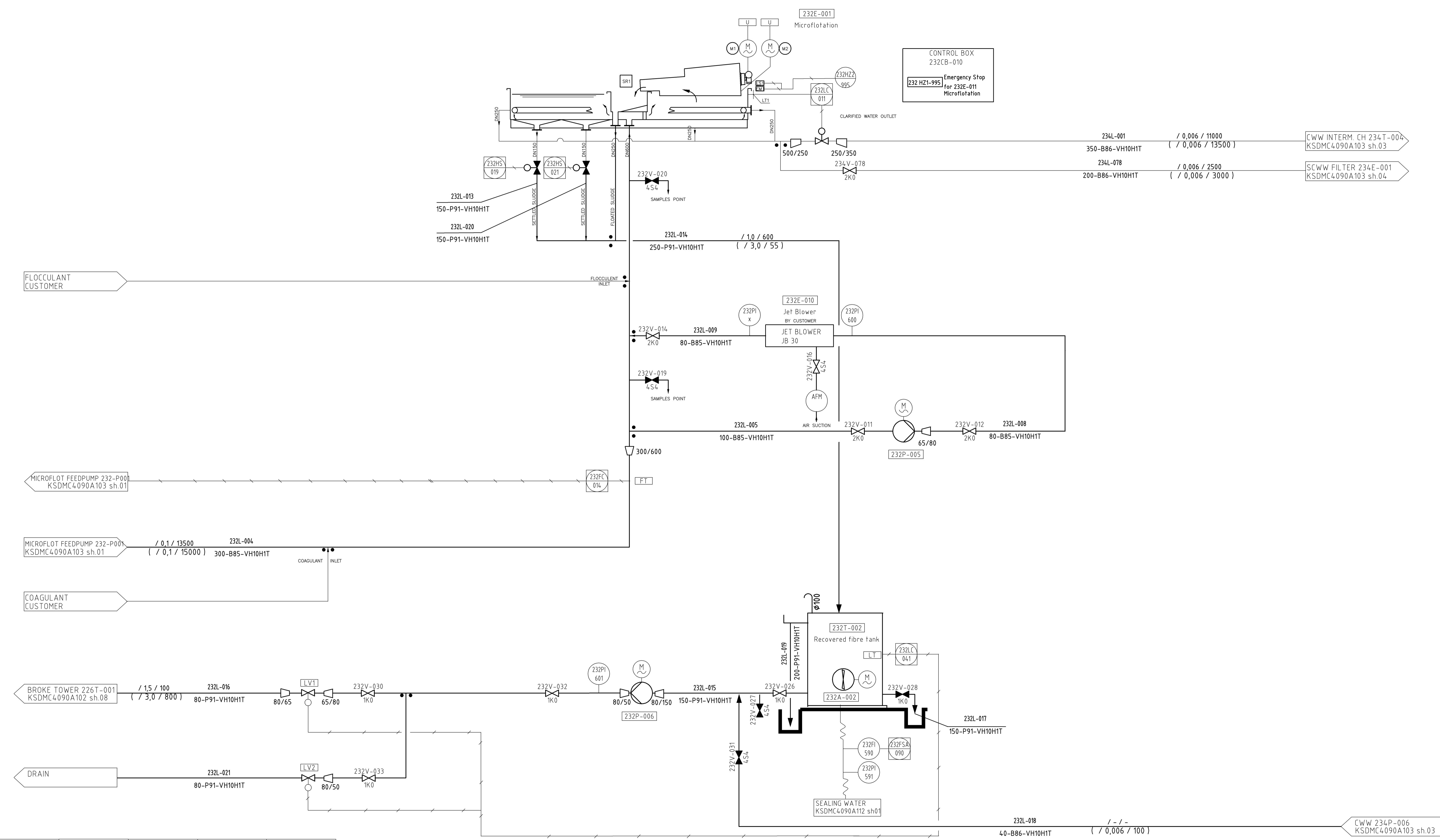
LOCAL

Pipe number
 Dim. - Media code - Pipe specification

TM PRODUCTION 209 BDT/D
PRODUCTION SPLIT (MAX/LINE):
SOFTWOOD 105 BDT/D
HARDWOOD 209 BDT/D
BROKE 40 BDT/D
RECYCLED BDT/D

DESIGN PRODUCTION 225.8 BDT/D "PROD." 17.5 G/M ²
HARDWOOD 65 % 147 BDT/D
SOFTWOOD 30 % 68 BDT/D
BROKE 5 % 11 BDT/D

Valmet
 Certified
 Signature NOM
 Date 04/17/2025



232E-001	232A-002	232T-002	232P-005	232P-006
Deltafloat	SSF-60.55	10 m ³	ACP65-315.4S	ACP50-250.4S
15000 l/min	3.5 %	3.5 %	1200 l/min	800 l/min
0,07 %			0,01 %	3 %
			30 m wc	22 m wc
Inst: kW, rpm	Inst: 5,5 kW, 1500 rpm		Inst: 15 kW, 1500 rpm	Inst: 7,5 kW, 1500 rpm

Valmet	CUSTOMER NAME CONFIDENTIAL	CUSTOMER'S DRWG. NAME/FILE	SYSTEM AutoCAD
	LOCATION OF MILL UK	CUSTOMER'S POS. NUM.	
DRW. NUM. / PROJECT NUM. 4.090A	LANGUAGES /	SCALE	DRAWN ELN
DOCUMENT KIND FLOW DIAGRAM			DATE 2024-12-17
TITLE VESTA			CHECKED DATE
WHITE WATER SYSTEM			APPROVED DATE
REASON FOR ISSUE CERTIFIED			DOCUMENT ID KSDMC4090A103
			SHEET 2/5
			REVISION 04

THE INFORMATION CONTAINED HEREIN IS CONFIDENTIAL AND PROPRIETARY TO VALMET TECHNOLOGIES, INC. OR ITS SUBSIDIARY COMPANY. IT IS NOT TO BE REPRODUCED OR DISCLOSED TO ANY THIRD PARTY WITHOUT THE PRIOR WRITTEN CONSENT OF VALMET TECHNOLOGIES, INC. OR ITS SUBSIDIARY COMPANY.