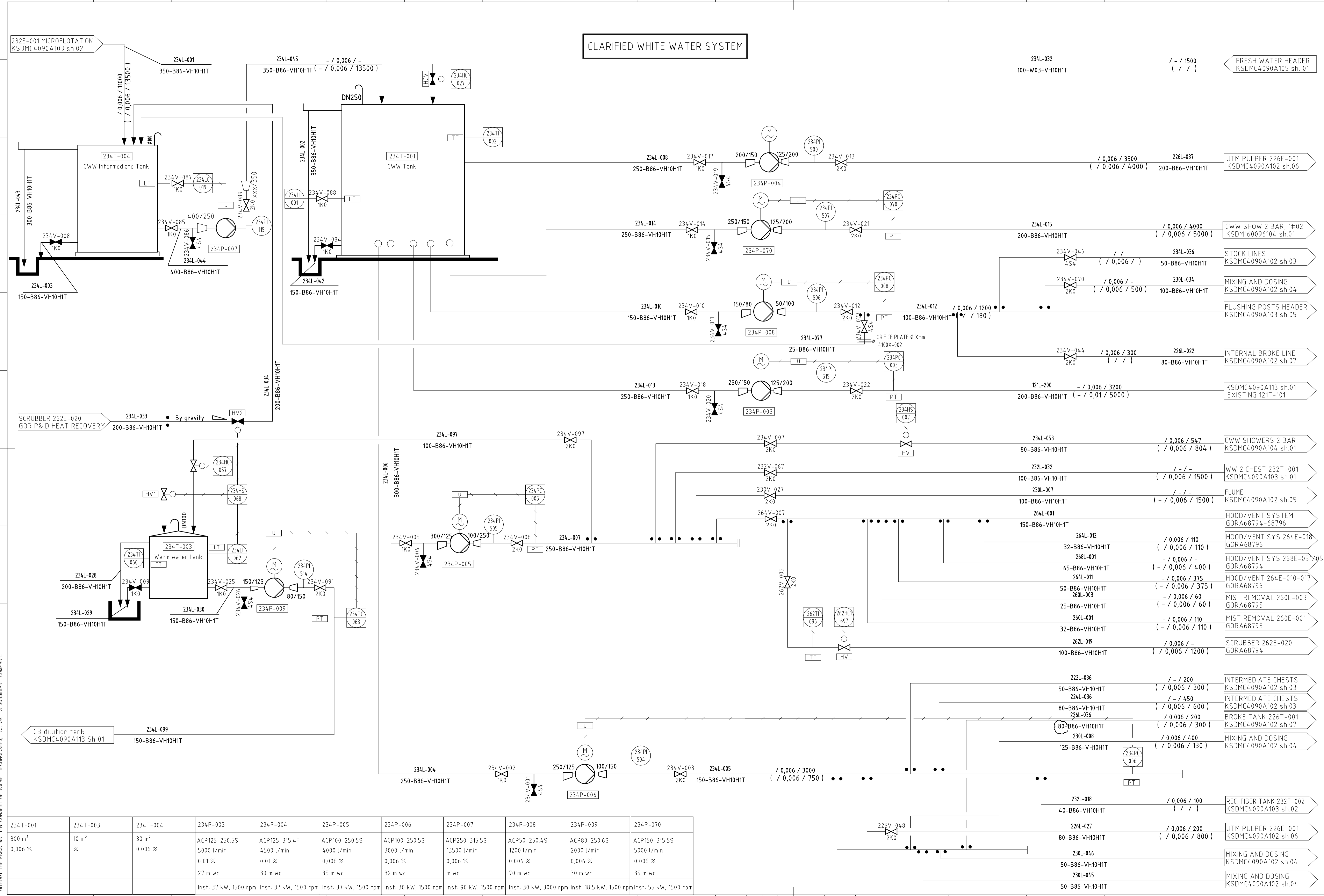


CLARIFIED WHITE WATER SYSTEM



REV	REVISION NOTE	DATE	DRAWN	CHECKED	APPROVED
04	Certified, general update	09/08/2025	NOM	JNS	NOM
03	Certified, Cone dimensions change	07/10/2025	NOM	JNS	NOM
02	Certified, Pump 234P-070 added	05/16/2025	NOM	JNS	MSA
01	Certified	04/17/2025	NOM	JNS	MSA

MEDIA	NAME
P95	PULP BLEACHED DRIED DISSOLVED SULPHATE SOFTWOOD
P96	PULP BLEACHED DRIED DISSOLVED SULPHATE HARDWOOD
P91	PULP BROKE, MIX OF P95 & P96
P85	PULP, MACHINE FURNISH, BLEACHED
B85	WHITE WATER, PAPER MACHINE
B86	WHITE WATER, CLEAR FILTRATE
B88	WHITE WATER, SUPERFILTRATE
W03	WATER, MECHANICALLY TREATED
G70	AIR, VACUUM SYSTEM
G75	COMPRESSED AIR, MILL
G76	COMPRESSED AIR, INSTRUMENT
D10	EFFLUENT FLOOR, DRAINAGE
S01	STEAM, LIVE, -0.5 MPa
S02	STEAM, LIVE, 0.5-1.3 MPa
C10	CONDENSATE, LIVE STEAM
A101	WET STRENGTH
A102	SOFTENER
A103	ANTI BACTERIAL
A104	DEFOAMER
A105	WIRE/FELT PASSIVATION
A106	FLOCCULANT
A107	MODIFIER
A108	ADHESIVE
A109	RELEASE
A110	BROKE

MAX FLOW kg/min / cons. % / LPM
 NOM FLOW (kg/min / cons. % / LPM)

24 / 4 / 600
 (20 / 4 / 505)

MAX FLOW kg/min / cons. % / LPM
 CONNECTED TO DCS SYSTEM CONNECTED TO PLC SYSTEM

LOCAL

TM PRODUCTION 209 BDT/D
PRODUCTION SPLIT (MAX/LINE):
SOFTWOOD 105 BDT/D
HARDWOOD 209 BDT/D
BROKE 40 BDT/D
RECYCLED BDT/D

DESIGN PRODUCTION 225,8 BDT/D "PROD." 17,5 G/M ²
HARDWOOD 65 % 147 BDT/D
SOFTWOOD 30 % 68 BDT/D
BROKE 5 % 11 BDT/D

Valmet
 Certified
 Signature NOM
 Date 04/17/2025

234T-001	234T-003	234T-004	234P-003	234P-004	234P-005	234P-006	234P-007	234P-008	234P-009	234P-070
300 m ³	10 m ³	30 m ³	ACP125-250.5S	ACP125-315.4F	ACP100-250.5S	ACP100-250.5S	ACP250-315.5S	ACP50-250.4S	ACP80-250.6S	ACP150-315.5S
0,006 %	%	0,006 %	5000 l/min	4500 l/min	4000 l/min	3000 l/min	13500 l/min	1200 l/min	2000 l/min	5000 l/min
			0,01 %	0,01 %	0,006 %	0,006 %	0,006 %	0,006 %	0,006 %	0,006 %
			27 m wc	30 m wc	35 m wc	32 m wc	m wc	70 m wc	30 m wc	35 m wc
			Inst: 37 kW, 1500 rpm	Inst: 37 kW, 1500 rpm	Inst: 37 kW, 1500 rpm	Inst: 30 kW, 1500 rpm	Inst: 90 kW, 1500 rpm	Inst: 30 kW, 3000 rpm	Inst: 18,5 kW, 1500 rpm	Inst: 55 kW, 1500 rpm

Valmet	CUSTOMER NAME CONFIDENTIAL	CUSTOMER'S DRWG. NAME/FILE	SYSTEM AutoCAD
	LOCATION OF MILL UK	CUSTOMER'S POS. NUM.	
DOC. NUM. / PROJECT NUM. C4.090A	LANGUAGES EN / -	SCALE	DRAWN ELN
DOCUMENT KIND FLOW DIAGRAM		CHECKED	DATE 2024-12-17
TITLE VESTA WHITE WATER SYSTEM REASON FOR ISSUE CERTIFIED		APPROVED	DATE
	DOCUMENT ID KSDMC4.090A103		SHEET 3/5 REVISION 04