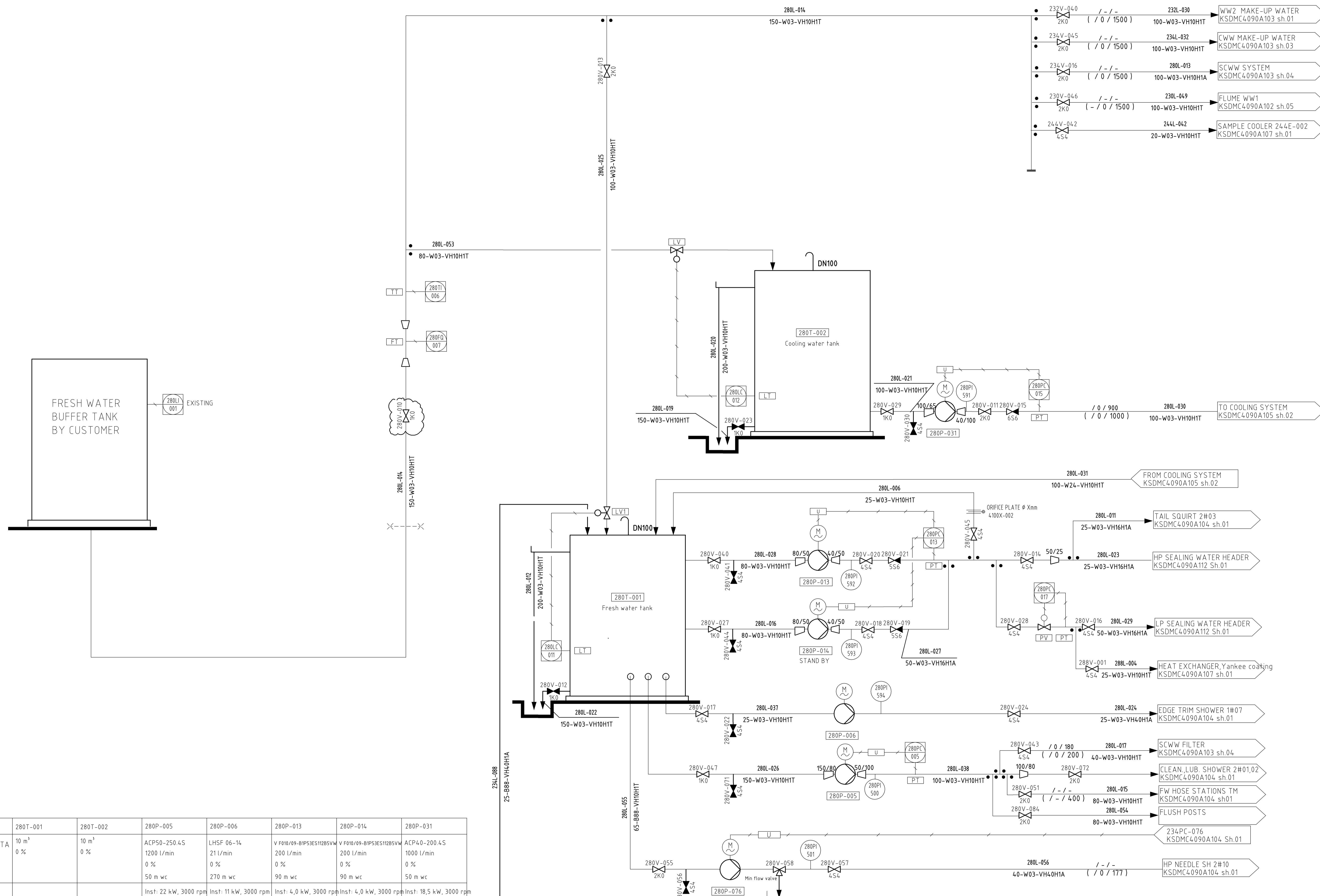


THE INFORMATION CONTAINED HEREIN CONSTITUTES CONFIDENTIAL INFORMATION OF VALMET. IT IS THE PROPERTY OF VALMET AND IS NOT TO BE REPRODUCED, COPIED, OR DISCLOSED TO ANY THIRD PARTY WITHOUT THE PRIOR WRITTEN CONSENT OF VALMET TECHNOLOGIES, INC. OR ITS SUBSIDIARY COMPANY.

04	Certified_general update	09/10/2025	NOM	JNS	NOM
03	Certified_cone dim changes	07/10/2025	NOM	JNS	NOM
02	Certified_see revision cloud	05/16/2025	NOM	JNS	MSA
01	Certified	04/17/2025	NOM	JNS	MSA

MATERIAL CODE		
CODE	NAME	
VE10HT	PN10 AISI 304L	
VE10H1A	PN10 AISI 304L	
VE25H1A	PN25 AISI 304L	
VE40H1A	PN40 AISI 304L	
VALVE TYPE CODE (acc. to SSG)		
CODE	NAME	BODY MAT.
454	BALL VALVE	AISI 304
204	BUTTERFLY VALVE	CARBON STEEL
904	KNIFE GATE VALVE	CARBON STEEL
1054	SAMPLE VALVE	AISI 304
654	SWING CHECK VALVE	AISI 304
554	DISC CHECK VALVE	AISI 304
1054	SAFETY VALVE	AISI 304
FLOW SUBSTANCES		
MEDIA	NAME	
P95	PULP BLEACHED DRIED DISSOLVED SULPHATE SOFTWOOD	
P96	PULP BLEACHED DRIED DISSOLVED SULPHATE HARDWOOD	
P91	PULP BROKE, MIX OF P95 & P96	
P85	PULP, MACHINE FURNISH, BLEACHED	
B85	WHITE WATER, PAPER MACHINE	
B86	WHITE WATER, CLEAR FILTRATE	
B88	WHITE WATER, SUPERFILTRATE	
W03	WATER, MECHANICALLY TREATED	
G70	AIR, VACUUM SYSTEM	
G75	COMPRESSED AIR, MILL	
G76	COMPRESSED AIR, INSTRUMENT	
D10	EFFLUENT FLOOR, DRAINAGE	
S01	STEAM, LVE, 0.5 MPa	
S02	STEAM, LVE, 0.5-1.3 MPa	
C10	CONDENSATE, LIVE STEAM	
A101	WET STRENGTH	
A102	SOFTENER	
A103	ANTI BACTERIAL	
A104	DEFOAMER	
A105	WIRE/FELT PASSIVATION	
A106	FLOCCULANT	
A107	MOFFER	
A108	ADHESIVE	
A109	RELEASE	
A110	BODIE	



Pipe number
 Dim. - Media code - Pipe specification
 NOM FLOW kg/min / cons. % / LPM
 MAX FLOW (kg/min / cons. % / LPM)
20 / 4 / 505
(24 / 4 / 600)

CONNECTED TO DCS SYSTEM
 LOCAL

TM PRODUCTION 209 BDT/D
PRODUCTION SPLIT (MAX/LINE):
SOFTWOOD 105 BDT/D
HARDWOOD 209 BDT/D
BROKE 40 BDT/D
RECYCLED BDT/D

DESIGN PRODUCTION 225.8 BDT/D "PROD." 17.5 G/M ²
HARDWOOD 65 % 147 BDT/D
SOFTWOOD 30 % 68 BDT/D
BROKE 5 % 11 BDT/D

Valmet
 Certified
 Signature NOM _____
 Date 04/17/2025

ITEM NUMBER	280T-001	280T-002	280P-005	280P-006	280P-013	280P-014	280P-031
TECHNICAL DATA	10 m ³	10 m ³	ACPS0-250.4S	LHSF 06-14	V F010/09-BIP53ES11285VV	V F010/09-BIP53ES11285VV	ACP4.0-200.4S
l/min, bar	0 %	0 %	1200 l/min	21 l/min	200 l/min	200 l/min	1000 l/min
%-weight			0 %	0 %	0 %	0 %	0 %
t/d			50 m wc	270 m wc	90 m wc	90 m wc	50 m wc
DUTY, kW			Inst: 22 kW, 3000 rpm	Inst: 11 kW, 3000 rpm	Inst: 4,0 kW, 3000 rpm	Inst: 4,0 kW, 3000 rpm	Inst: 18,5 kW, 3000 rpm

Valmet CONFIDENTIAL CUSTOMER NAME LOCATION OF MILL UK LANGUAGES EN / -	CUSTOMER'S DRWG. NAME/FILE CUSTOMER'S POS. NUM. SCALE DRAWN ELN CHECKED JNS APPROVED NOM DATE 2024-12-17 DATE 2025-09-10 DATE 2025-09-10	SYSTEM AutoCAD KSDMC4090A105 SHEET 1/3 REVISION 04
--	--	---