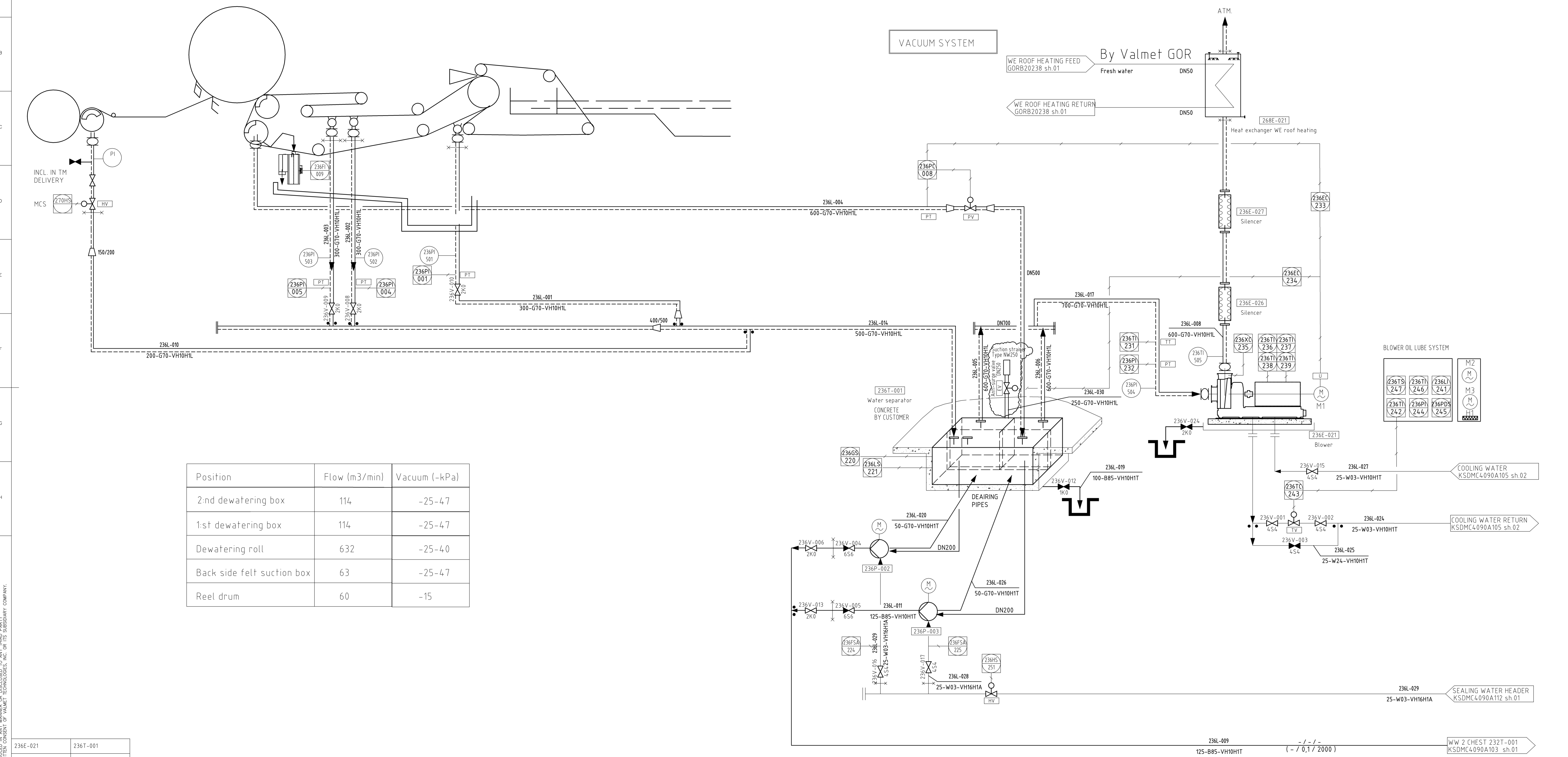


REV	REVISION NOTE	DATE	DRAWN	CHECKED	APPROVED
03	Certified, anti-surge valve moved to separator	10/06/2025	NOM	JNS	NOM
02	Certified, general revision	08/15/2025	NOM	JNS	NOM
01	Certified	04/17/2025	NOM	JNS	MSA
00	Preliminary	02/12/2025	NOM	JNS	MSA

MATERIAL CODE		
CODE	NAME	
VH10HT	PN16 AISI 304	
VH10HA	PN16 AISI 304	
VH20HA	PN25 AISI 304	
VH10HA	PN16 AISI 304	

VALVE TYPE CODE (acc. to SSG)		
CODE	NAME	BODY MAT.
454	BALL VALVE	AISI 304
284	BUTTERFLY VALVE	CARBON STEEL
184	KNIFE GATE VALVE	CARBON STEEL
1164	SAMPLE VALVE	AISI 304
654	SWING CHECK VALVE	AISI 304
554	DISC CHECK VALVE	AISI 304
1054	SAFETY VALVE	AISI 304

FLOW SUBSTANCES	
MEDIA	NAME
P95	PULP BLEACHED DRED DISSOLVED SULPHATE HARDWOOD
P96	PULP BLEACHED DRED DISSOLVED SULPHATE HARDWOOD
P91	PULP BLEACHING W/ OF P95 & P96
P95	PULP MACHINE FURNISH BLEACHED
B85	WHITE WATER, PAPER MACHINE
B86	WHITE WATER, CLEAR FILTRATE
B88	WHITE WATER, SUPERFILTRATE
W03	WATER, MECHANICALLY TREATED
G70	AIR, VACUUM SYSTEM
G75	COMPRESSED AIR, MLL
G76	COMPRESSED AIR, INSTRUMENT
D10	EFFLUENT FLOOR, DRAINAGE
S01	STEAM LINE, 4.5 MPa
S02	STEAM LINE, 0.5-1.3 MPa
C10	CONDENSATE LINE STEAM
A101	NET STRENGTH
A102	SOFTENER
A103	ANTI BACTERIAL
A104	DEFAMER
A105	WIRE/FEEL PASSIVATION
A106	FLOCCULANT
A107	HOPPER
A108	ADHESIVE
A109	RELEASE
A110	RODDE



Position	Flow (m3/min)	Vacuum (-kPa)
2-nd dewatering box	114	-25-47
1-st dewatering box	114	-25-47
Dewatering roll	632	-25-40
Back side felt suction box	63	-25-47
Reel drum	60	-15

236E-021	236T-001
RT 71-1	-
923 m ³ /min	-
- %	- %
Inst: 950 kW, 1500 rpmInst: ,	

Pipe number
Dim. - Media code - Pipe specification

NOM FLOW kg/min / cons. % / LPM
MAX FLOW (kg/min / cons. % / LPM)
20 / 4 / 505
(24 / 4 / 600)

CONNECTED TO DCS SYSTEM LOCAL

TM PRODUCTION 209 BDT/D
PRODUCTION SPLIT (MAX/LINE):
SOFTWOOD 105 BDT/D
HARDWOOD 209 BDT/D
BROKE 40 BDT/D
RECYCLED BDT/D

DESIGN PRODUCTION 225,8 BDT/D "PROD." 17,5 G/M ²
HARDWOOD 65 % 14,7 BDT/D
SOFTWOOD 30 % 6,8 BDT/D
BROKE 5 % 1,1 BDT/D

Valmet
Certified
Signature NOM
Date 04/17/2025

Valmet	CUSTOMER NAME	CUSTOMER'S DWG. NUMBER	SYSTEM
	CONFIDENTIAL		AutoCAD
	LOCATION OF MILL		
	UK		
DATE: NAL / PROJECT NAL	LANGUAGES	SCALE	DRAWN
C4090A	EN / -		ELN
DOCUMENT NUMBER			CHECKED
FLOW DIAGRAM			JNS
TITLE			DATE
VESTA			2025-10-06
VACUUM SYSTEM			APPROVED
REVISION FOR ISSUE			NOM
CERTIFIED			DATE
			2025-10-06
			PROJECT
			1/1
			REVISION
			03
			KSDMC4090A106