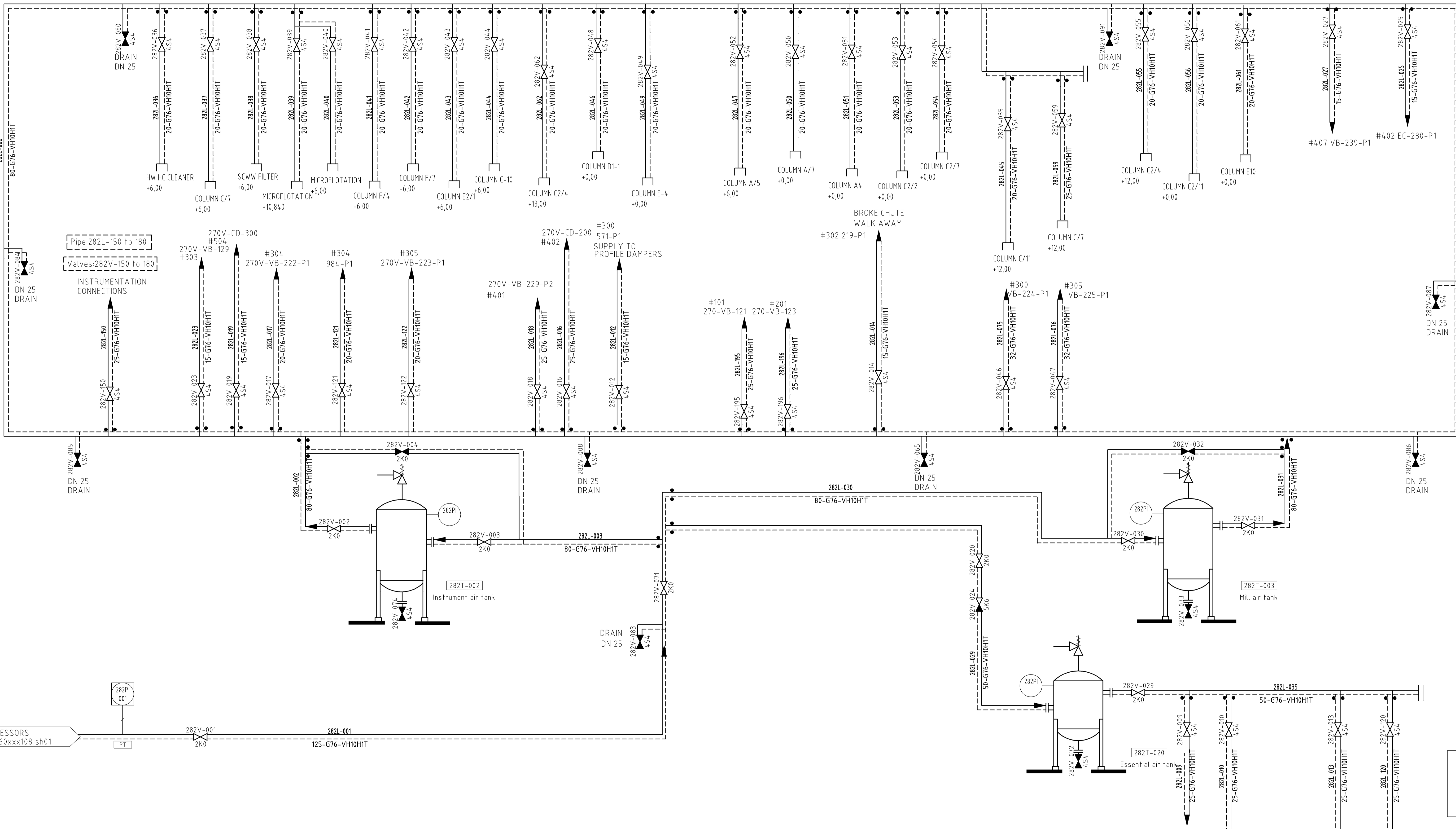


RevNo	REVISION NOTE	DATE	DRAWN	CHECKED	APPROVED
04	Certified, general update	09/09/2025	NOM	JNS	NOM
03	Certified, inlet header changes	08/14/2025	NOM	JNS	NOM
02	Certified, general revision	05/22/2025	NOM		
01	Certified	04/17/2025	NOM	JNS	MSA



VALVE TYPE CODE (acc. to SSG)

CODE	NAME	BODY MAT.
454	BALL VALVE	ALSI 304
284	BUTTERFLY VALVE	CARBON STEEL
814	KNIFE GATE VALVE	CARBON STEEL
184	SAMPLE VALVE	ALSI 304
454	SWING CHECK VALVE	ALSI 304
554	DISC CHECK VALVE	ALSI 304
854	SAFETY VALVE	ALSI 304

FLOW SUBSTANCES

MEDIA	NAME
P95	PULP BLEACHED ORED DISSOLVED SULPHATE SOFTWOOD
P96	PULP BLEACHED ORED DISSOLVED SULPHATE HARDWOOD
P91	PULP BROKE, MIX OF P95 & P96
P85	PULP, MACHINE FURNISH, BLEACHED
B85	WHITE WATER, PAPER MACHINE
B86	WHITE WATER, CLEAR FILTRATE
B88	WHITE WATER, SUPERFILTRATE
W83	WATER, MECHANICALLY TREATED
G70	AIR, VACUUM SYSTEM
G75	COMPRESSED AIR, MILL
G76	COMPRESSED AIR, INSTRUMENT
D10	EFFLUENT FLOOR, DRAINAGE
S01	STEAM, LIVE, 0.5 MPa
S02	STEAM, LIVE, 0.5-1.3 MPa
C10	CONDENSATE, LIVE STEAM
A01	WET STRENGTH
A02	SOFTENER
A03	ANTI BACTERIAL
A04	DEFAMER
A05	WIRE/FELT PASSIVATION
A06	FLOCCULANT
A07	MOFFER
A08	ADHESIVE
A09	RELEASE
A10	BIOIDE

DESIGN FLOW kg/min / cons. % / LPM  
 MAX FLOW (kg/min / cons. % / LPM)  
 • 20 / 4 / 505  
 (24 / 4 / 600)

CONNECTED TO DCS SYSTEM  
 CONNECTED TO PLC SYSTEM  
 LOCAL

TM PRODUCTION 209 BDT/D  
 PRODUCTION SPLIT (MAX/LINE):  
 SOFTWOOD 105 BDT/D  
 HARDWOOD 209 BDT/D  
 BROKE 40 BDT/D  
 RECYCLED BDT/D

DESIGN PRODUCTION 225,8 BDT/D "PROD." 17,5 G/M<sup>2</sup>  
 HARDWOOD 65 % 147 BDT/D  
 SOFTWOOD 30 % 68 BDT/D  
 BROKE 5 % 11 BDT/D

**Valmet**  
 Certified  
 Signature NDM  
 Date 04.17.2025

Customer Name: CONFIDENTIAL	Customer's Draw. Name/ File	System: AutoCAD
Location of Mill: UK	Customer's Pos. Num.	
Order Num. / Project Num.: C4.090A	Scale	Drawn: ELN
Document Kind: FLOW DIAGRAM	Language: EN / -	Checked: JNS
Title: VESTA MILL AIR SYSTEM	Reason for Issue: CERTIFIED	Approved: NOM
		Document ID: KSDMC4090A108
		Sheet: 1/1
		Revision: 04

282T-002	282T-003	282T-020
5 m <sup>3</sup>	5 m <sup>3</sup>	1 m <sup>3</sup>
%	%	%

THE INFORMATION CONTAINED HEREIN CONSTITUTES CONFIDENTIAL INFORMATION THEREOF, AND SHALL NOT BE REPRODUCED, COPIED, OR DISCLOSED TO ANY THIRD PARTY WITHOUT THE PRIOR WRITTEN CONSENT OF VALMET TECHNOLOGIES, INC. OR ITS SUBSIDIARY COMPANY.