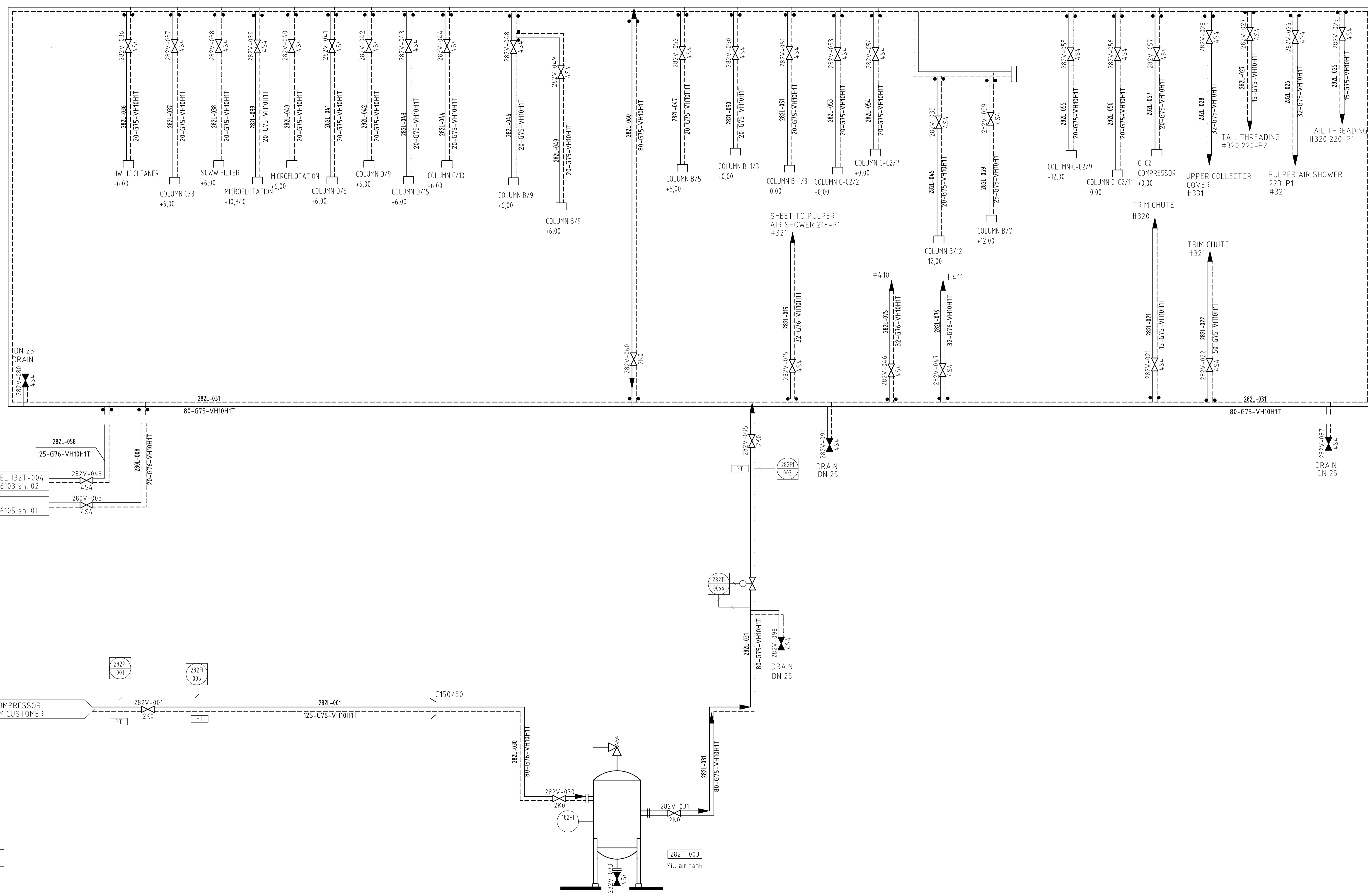


REV	REVISION NOTE	DATE	DRAWN	CHECKED	APPROVED
00	Preliminary	02/12/2025	NOM	JNS	MSA



CODE	NAME	BODY MAT.
454	BALL VALVE	ANSI 304
284	BUTTERFLY VALVE	CARBON STEEL
864	KNEE GATE VALVE	CARBON STEEL
454	SAMPLE VALVE	ANSI 304
454	SHING CHECK VALVE	ANSI 304
554	DISC CHECK VALVE	ANSI 304
854	SAFETY VALVE	ANSI 304

MEDIA	NAME
P95	PULP BLEACHED ORED DISSOLVED SULPHATE SOFTWOOD
P96	PULP BLEACHED ORED DISSOLVED SULPHATE HARDWOOD
P91	PULP BROKE, MIX OF P95 & P96
P85	PULP, MACHINE FURNISH, BLEACHED
B85	WHITE WATER, PAPER MACHINE
B86	WHITE WATER, CLEAR FILTRATE
B88	WHITE WATER, SUPERFILTRATE
W83	WATER, MECHANICALLY TREATED
G70	AIR, VACUUM SYSTEM
G75	COMPRESSED AIR, MILL
G76	COMPRESSED AIR, INSTRUMENT
D10	EFFLUENT FLOOR, DRAINAGE
S01	STEAM, LIVE, 0.5 MPa
S02	STEAM, LIVE, 0.5-1.3 MPa
C10	CONDENSATE, LIVE STEAM
A01	WET STRENGTH
A02	SOFTENER
A03	ANTI BACTERIAL
A04	DEFOAMER
A05	WIRE/FELT PASSIVATION
A06	FLOCCULANT
A07	MOFFER
A08	ADHESIVE
A09	RELEASE
A10	BIOIDE

DESIGN FLOW kg/min / cons. % / LPM
 MAX FLOW (kg/min / cons. % / LPM)
 20 / 4 / 505
 (24 / 4 / 600)

CONNECTED TO DCS SYSTEM
 CONNECTED TO PLC SYSTEM
 LOCAL

TM PRODUCTION 209 BDT/D
 PRODUCTION SPLIT (MAX/LINE):
 SOFTWOOD 105 BDT/D
 HARDWOOD 209 BDT/D
 BROKE 40 BDT/D
 RECYCLED BDT/D

DESIGN PRODUCTION 225,8 BDT/D "PROD." 17,5 G/M²
 HARDWOOD 65 % 147 BDT/D
 SOFTWOOD 30 % 68 BDT/D
 BROKE 5 % 11 BDT/D

Valmet
 Preliminary
 Signature NDM
 Date 02/12/2025

Valmet CUSTOMER NAME CONFIDENTIAL LOCATION OF MILL UK LANGUAGES EN / -	CUSTOMER'S DRWG. NAME/FILE CUSTOMER'S POS. NUM. SCALE	SYSTEM AutoCAD
QDR. NUM. / PROJECT NUM. C4.090A DOCUMENT KIND FLOW DIAGRAM TITLE VESTA MILL AIR SYSTEM REASON FOR ISSUE PRELIMINARY	DRAWN ELN CHECKED JNS APPROVED MSA DOCUMENT ID KSDMC4090A108	DATE 12/17/2024 DATE 02/12/2025 DATE 02/12/2025 SHEET 2/2 REVISION 00

THE INFORMATION CONTAINED HEREIN CONSTITUTES CONFIDENTIAL INFORMATION AND IS NOT TO BE REPRODUCED IN ANY MANNER OR DISCLOSED TO ANY THIRD PARTY WITHOUT THE PRIOR WRITTEN CONSENT OF VALMET TECHNOLOGIES, INC. OR ITS SUBSIDIARY COMPANY.

282T-003