

Compliance Assessment Report CAR_NRW0049835

Permit being assessed: KP3795FU.

For: Hendy Quarry Landfill, **held by:** Tarmac Trading Limited

At: School Road, Miskin, Pontyclun, R C T, CF72 8PG.

Type of assessment: Site Inspection,

Reason: Routine.

On: 24/10/2025 between 13:00 and 14:00.

Parts of permit assessed: 2.1.1, 2.3.1, 2.2.1, 3.6.1.

NRW Lead Officer: Greg Gardner.

Report sent to: RAP Manager, RAP Manager, on 07/11/2025.

1. Summary of our findings (full details in section 4)

Part of permitted activity assessed (compliance criteria)	Assessment result	Permit condition
W2A - Waste - Operations - Permitted activities	Assessed (A)	
W2C - Waste - Operations - Operating techniques	Assessed (A)	
W2D - Waste - Operations - The site	Assessed (A)	
W3E - Waste - Emissions and monitoring - Monitoring	Assessed (A)	

Result types are explained in more detail in the 'Important Information' section below.

Total non-compliances recorded	Total non-compliance score
0	0

How we use the non-compliance score to calculate your annual fee is explained in the 'Important Information' section below.

2. What action is required?

No action required.

3. What will happen next?

Any non-compliance we have identified and recorded on this form is an offence. It can result in criminal prosecution and/or suspension or revocation of your permit.

At this time, we do not intend to take any further action.

This statement does not stop us from taking additional enforcement action if further relevant information comes to light or offences continue.

4. Details of our assessment

This report details the site visit made on the 24th October 2025 to Tarmac Trading Ltd Hendy Quarry Landfill permit reference number EPR-KP3795FU.

Natural Resources Wales (NRW) Senior Officer Greg GARDNER attended the Hendy Quarry, School Road, Miskin, Pontyclun CF72 8PG for a planned routine site inspection at 13:00pm where I met with a member of Tarmac Trading Management. The weather was wet, sunny and reasonably mild at the time of the inspection.

GENERAL OBSERVATIONS

The purpose of the visit was to conduct a site handover from Officer Ty WARD to Officer GARDNER and to become familiar with the sites operations, process and surroundings. Discussions took place regarding current site operations and future intentions such as any planned maintenance.

The site is currently non-operational with no immediate plans to restart operations. Site management walked NRW Officers through the process where it was noted that in the areas that were visited (both inside and outside the permitted boundary), it was deemed that there were no offensive odours witnessed and / or excessive noise / dust witnessed.

During the inspection, the overall housekeeping standards across the site were observed to be sufficient. Storage areas were free from unnecessary clutter, waste materials were appropriately stored or disposed of, and walkways remained unobstructed. (see photos 1-2) The on site water pump used to extract water from the base of the quarry was operational with no signs of poor maintenance with the newly installed control system (see photo 3).



Photo 1 - View of Quarry at Tarmac Hendy site



Photo 2 - Old Landfill area currently non-operational at Tarmac Hendy Site

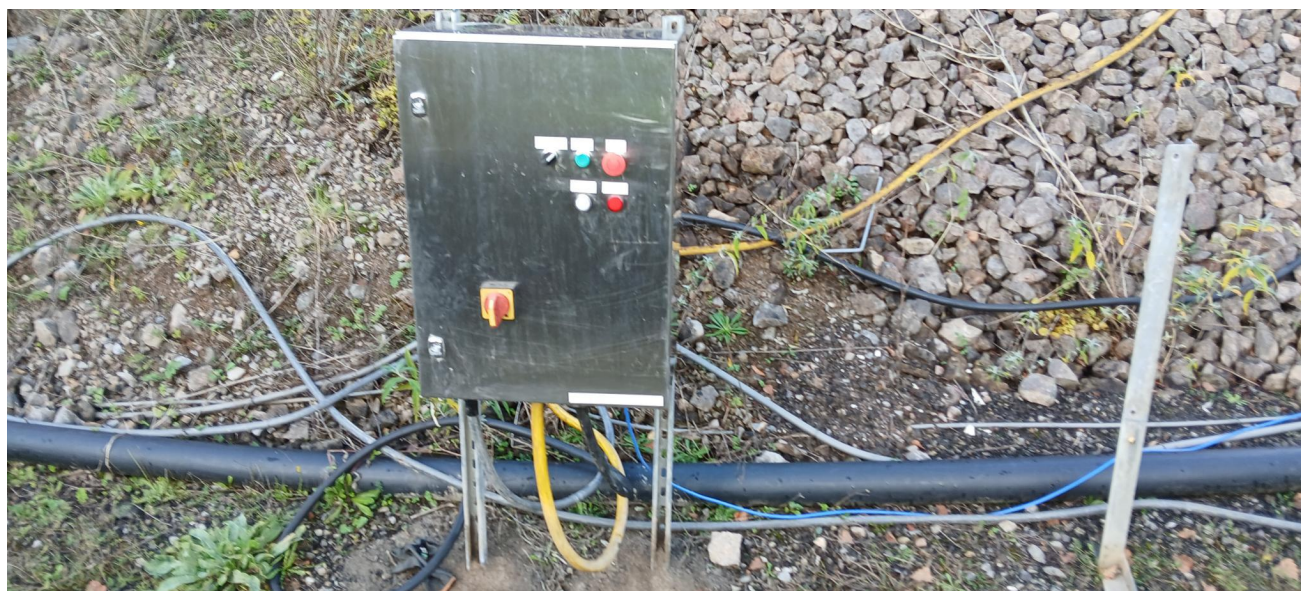


Photo 3 - Newly installed pump control system

DAILY MONITORING

It was previously identified (CAR_NRW0049033) that the site was not conducting daily monitoring of surface water emissions. During the most recent site visit, it was observed that a new telemetry system had been installed to facilitate daily readings. However, additional maintenance was required to ensure the system's full reliability. These works were scheduled for completion, with the system expected to be fully operational by 24/10/2025.



Photo 4 - Flow meter located on surface water discharge pipe at Tarmac Hendy site

On 5 November 2025, Tarmac site management notified Officer GARDNER via email that the monitoring system has been successfully commissioned. Daily readings are now being conducted in accordance with permit conditions, with supporting evidence provided in the form of system screenshots. As such, the action identified in the previous Compliance Assessment Report (CAR_NRW0049033) is considered complete and can be formally closed.

In this document 'Natural Resources Wales' means the Natural Resource Body for Wales established by Article 3 of the Natural Resources Body for Wales (Establishment) Order 2012

END.

If you have any queries about this report, or to discuss completion of any actions, please contact the NRW Officer named above.

Important information

Legal status of this report

Your permit is issued to you under the Environmental Permitting Regulations. You have a responsibility to comply with the conditions of your permit and prevent pollution/harm of the environment. You must also ensure that you comply with any other relevant legislation that may apply to your site's operations.

This report explains the findings of our assessment and any action you are required to take. We categorise non-compliance using our guidance for assessing non-compliance at regulated sites.

When we find potential non-compliance/s we will normally give you advice on how to maintain compliance.

To correct non-compliance, we may:

- require you to take specific actions
- issue a notice
- review the conditions of your permit.

Any advice and guidance we give will be without prejudice to any other enforcement response that we consider may be required.

Assessment results and non-compliance categories (used in section 1):

Assessment result	Description
Assessed (A)	Assessed or assessed in part, no evidence of non-compliance found
Action only (X)	Action only relating to the activity assessment
Ongoing (O)	Ongoing non-compliance, not scored

Non-compliance category	Description	Score
C1 Major	Potential to have a major, serious, persistent and/or extensive impact or effect on the environment, people and/or property	60
C2 Significant	Potential to have a significant impact or effect on the environment, people and/or property	31
C3 Minor	Potential to have a minor or minimal impact or effect on the environment, people and/or property	4
C4 No environmental impact	Non-compliance at a regulated site that cannot foreseeably have any impact on the environment, people and/or property	0.1

How we use assessment scores

The number and severity of non-compliances recorded in a year will affect your annual subsistence fee the following year. A non-compliance factor is added to your site's Operator

Performance Risk Appraisal (OPRA) score when we calculate your fee to reflect the additional resource we use to assess permit compliance.

If your assessment result in Section 1 is suspended, what does this mean?

In line with our guidance, we may suspend scores for up to six months to allow time for remedial action to be taken. Suspended scores will be re-instated if the action is not completed.

Full list of Waste compliance criteria (used in section 1 and 2):

1. Management

- W1A – General management
- W1B – Energy Efficiency (MCP/SG facilities only)
- W1C – Avoidance, recovery and disposal of wastes produced by the activities

2. Operations

- W2A – Permitted activities
- W2B – Waste recovery plan
- W2C – Operating techniques
- W2D – The site
- W2E – Waste acceptance
- W2F – Technical requirements
- W2G – Improvement programme
- W2H – Pre-operational conditions

3. Emission and Monitoring

- W3A – Emissions to water, air or land
- W3B – Emissions of substances not controlled by emission limits
- W3C – Odour
- W3D – Noise and vibration
- W3E – Monitoring
- W3F – Pests
- W3G – Fire

4. Information

- W4A – Records
- W4B – Reporting
- W4C – Notification

Enforcement response

Any non-compliance with a permit condition is an offence and we may take legal action against you. Action we take can include prosecution, serving a notice on you and/or suspension or revocation of your permit. See our Enforcement and Sanctions Guidance for further information.

Data protection notice

You should make sure that anyone named in this report knows that the information it contains will be processed by Natural Resources Wales to fulfil its regulatory and monitoring functions and to maintain the relevant public register(s).

We may also use and/or disclose the report in connection with:

- offering or providing you with our literature or services relating to environmental matters
- consulting with the public, public bodies and other organisations (e.g. Health and Safety Executive, local authorities) on environmental issues
- carrying out statistical analysis, research and development on environmental issues
- providing public register information to enquirers
- investigating possible breaches of environmental law
- assessing customer service satisfaction and improving our service
- Freedom of Information Act or Environmental Information Regulations requests.

We may also pass it on to our agents or representatives to do these things on our behalf.

Disclosure of information – this report will be available to view on-line

If you think this report contains commercially confidential information that should not be placed on our public register, you must contact your local Natural Resources Wales office within **fifteen working days** of receiving this report, using the contact details in the accompanying email or letter. You must give a full explanation of why it should not be added to our public register, including specifying which information is commercially confidential. We will assess your request and respond to you within twenty working days to let you know if we agree to your request.

What do I do if I disagree with the report or have a complaint?

If you disagree with this compliance assessment report, you should contact the lead officer without delay to discuss your concerns.

If you are unable to resolve the issue with the lead officer or their line manager you should contact our Customer Contact team on 0300 065 3000 (Monday to Friday 08:00 to 18:00), or email enquiries@naturalresourceswales.gov.uk for details of how to raise your dispute further through our Complaints and Commendations procedure.

If you are dissatisfied with our response, you can contact the Public Services Ombudsman for Wales by phone on 0300 7900203 or by email at ask@ombudsman.wales

Welsh Language Standards

We are committed to establishing Natural Resources Wales as a naturally bilingual organisation. We will provide compliance reports in your preferred language.