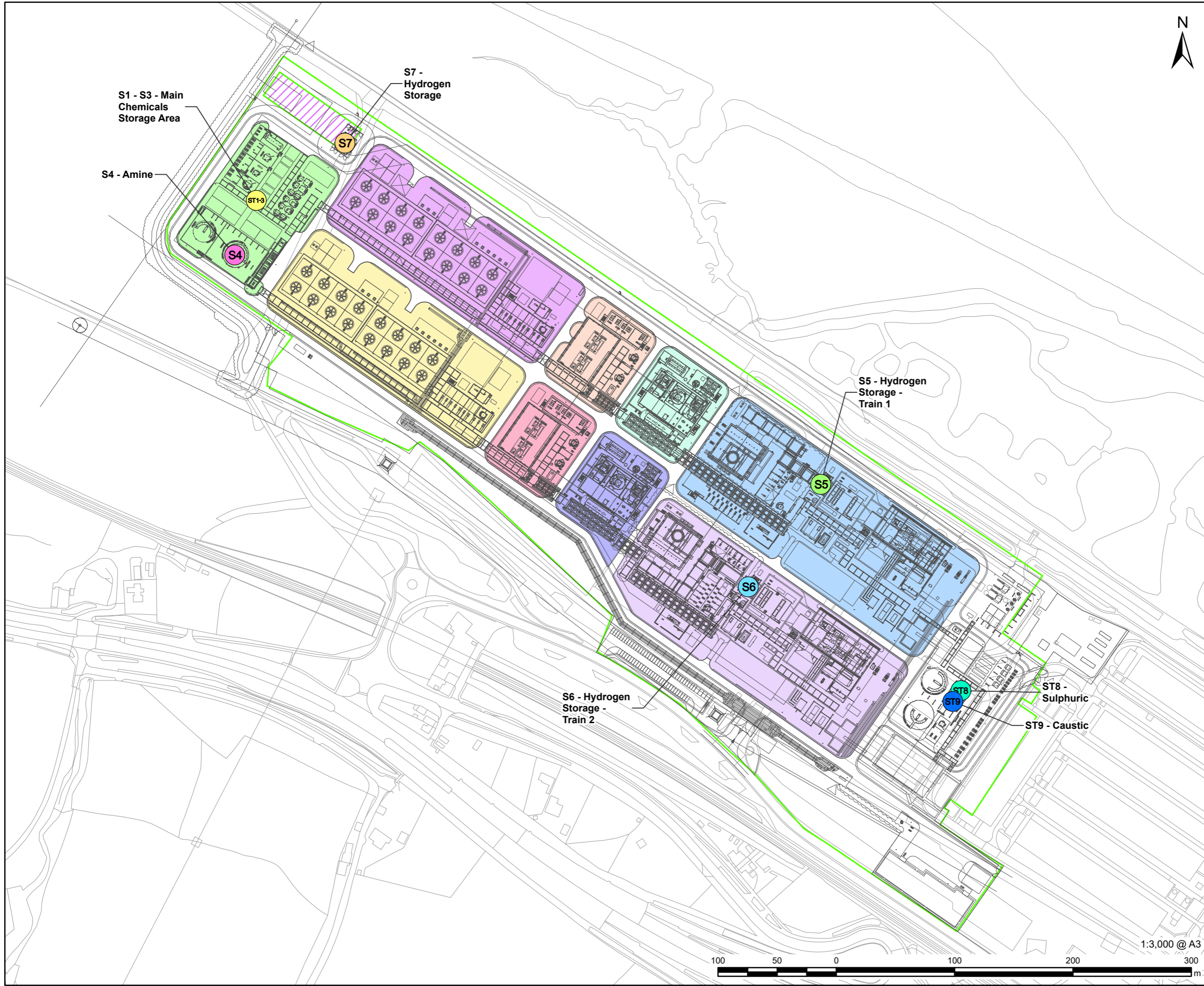


LEGEND

	Indicative Installation Boundary
	S1 - S3 - Main Chemicals Storage Area
	S4 - Amine
	S5 - Hydrogen Storage - Train 1
	S6 - Hydrogen Storage - Train 2
	S7 - Hydrogen Storage
	ST8 - Sulphuric
	ST9 - Caustic
	CO2 AGI (Proposed)
	Process Effluent Plant Air / Inst Air / N2
	Train 1 CCP Plant Cooling Towers & Power Plant Cooling Towers
	Train 1 CO2 Compression & CO2 Conditioning
	Train 1 Power Plant Gas Turbine / HRSG & Carbon Capture Direct Contact Cooler / Absorber
	Train 1 Stripper Thermal Reclaimer Unit (TRU)
	Train 2 CCP Plant Cooling Towers & Power Plant Cooling Towers
	Train 2 CO2 Compression & CO2 Conditioning
	Train 2 Power Plant Gas Turbine / HRSG & Carbon Capture Direct Contact Cooler / Absorber
	Train 2 Stripper Thermal Reclaimer Unit (TRU)



NOTES
 © Crown Copyright 2025. All rights reserved.
 Ordnance Survey Licence AC0000808122.

ISSUE PURPOSE
 Environmental Permit Application

DATE
 January 2026

PROJECT NUMBER
 60756365

FIGURE TITLE
 Site Layout - Contractor 2

FIGURE NUMBER
 Figure 3-2

This drawing has been prepared for the use of AECOM's client. It may not be used, modified, reproduced or relied upon by third parties, except as signed by AECOM or as required by law. AECOM accepts no responsibility, and denies any liability whatsoever, to any party that uses or relies on this drawing without AECOM's express written consent. Do not scale this document. All measurements must be obtained from the stated dimensions.