



MCERTS - EDM Inspection Report

Llandrillo WwTW

29 April 2025

Report No. CFS/ 17906





Site Information



Site Name:	Llandrillo WwTW	
Consent/Permit Holder:	Dŵr Cymru Welsh Water	
Site Address:	Off Berwyn Street B4401 Llandrillo LL21 0SW	
Site Contact:	Statutory & Regulatory Maintenance Manager	
Contact Phone Number:	mcerts@dwrwymru.com	
Site Ref or Postcode:	898	
Grid Ref (Sensor):	SJ 03463 37484	
Consent/Permit No:	CM0006001	
Location of EDM Sensor:	Waste water overflow to storm management system	
Number of EDMs:	1	
Instrument Type:	Type A (non contact) - R	
Instrument/Device(s):	Vega Vegamet 862 C 22 (HART)	
Level Meter Serial Number:	69867828	
Sensor Serial Number:	69211909	
Date of Inspection:	29/04/2025	
Inspector:	Sam Lawson - MI 23 032/1	
Inspection Report No:	CFS/ 17906	
Survey Pack:	F	* Kit Inventory and calibration data recorded on central QMS database
Uncertainty:	± 2.1 mm	P A S S
Site Compliance:	Following a site inspection, the measurement system was found to meet the requirements of the Environment Agency <i>MCERTS: requirements for installing and using event duration monitors - MCERTS Performance Standard.</i> Published 28th August 2024	

Site Details

Site Description
Llandrillo WwTW is a sewage treatment works with biological trickling filters (see process diagram).
Location of Event Monitor(s)
The EDM is located above the inlet pumping station. There is an overflow pipe to nature.
Overflow Point(s) Requiring Event Monitoring
Waste water overflow to nature.
Verification / Calibration
The sensor was mounted on a rigid bracket with a removable datum plate to reference the sensor height relative to the hydraulic datum. The reference height of the datum plate has been set accurately and recorded.
Site Maintenance Arrangements, Evidence and Suitability
A routine maintenance schedule has not been confirmed but is required as part of the consent holders Quality Management System, as audited by CSA. The level measurement system was found to be in a satisfactory condition at the time of the Inspection.
MCERTS Approved Product
The installed meter has a valid MCERTS Approved product certificate. Certificate number: CSA MC210360/01
System Observed in Operation
The EDM was not observed in a storm condition during the inspection. However, there is no evidence to suggest that the system would not be suitable, during a storm event.
Indicated Discharge Status
The indicated discharge status can be observed on site by: The level activation - Access to telemetry required.
Telemetry Arrangements
The Event Monitor data is collected on the SCADA system. The data is transmitted using an analogue 4/20mA signal
Inspector's Judgements or Comments About the Installation
The site manual was used to identify the correct overflow pipe.



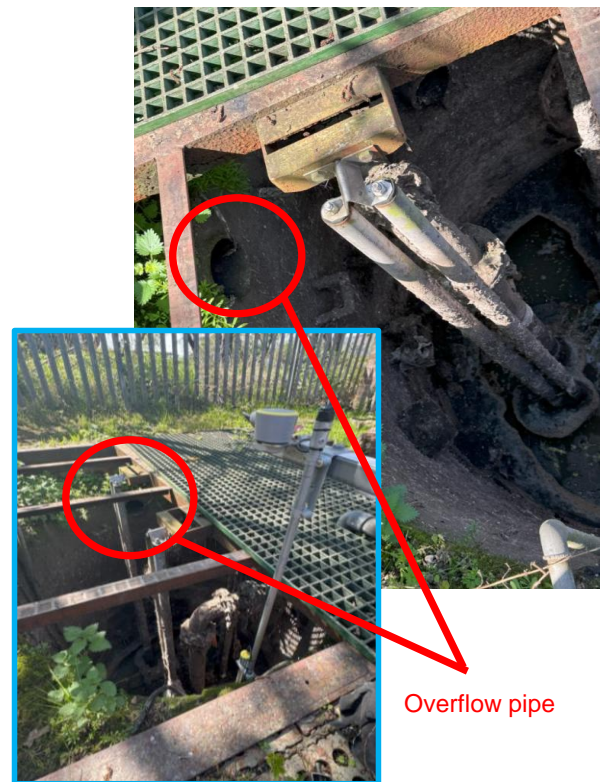
EDM Level Meter and Serial Number



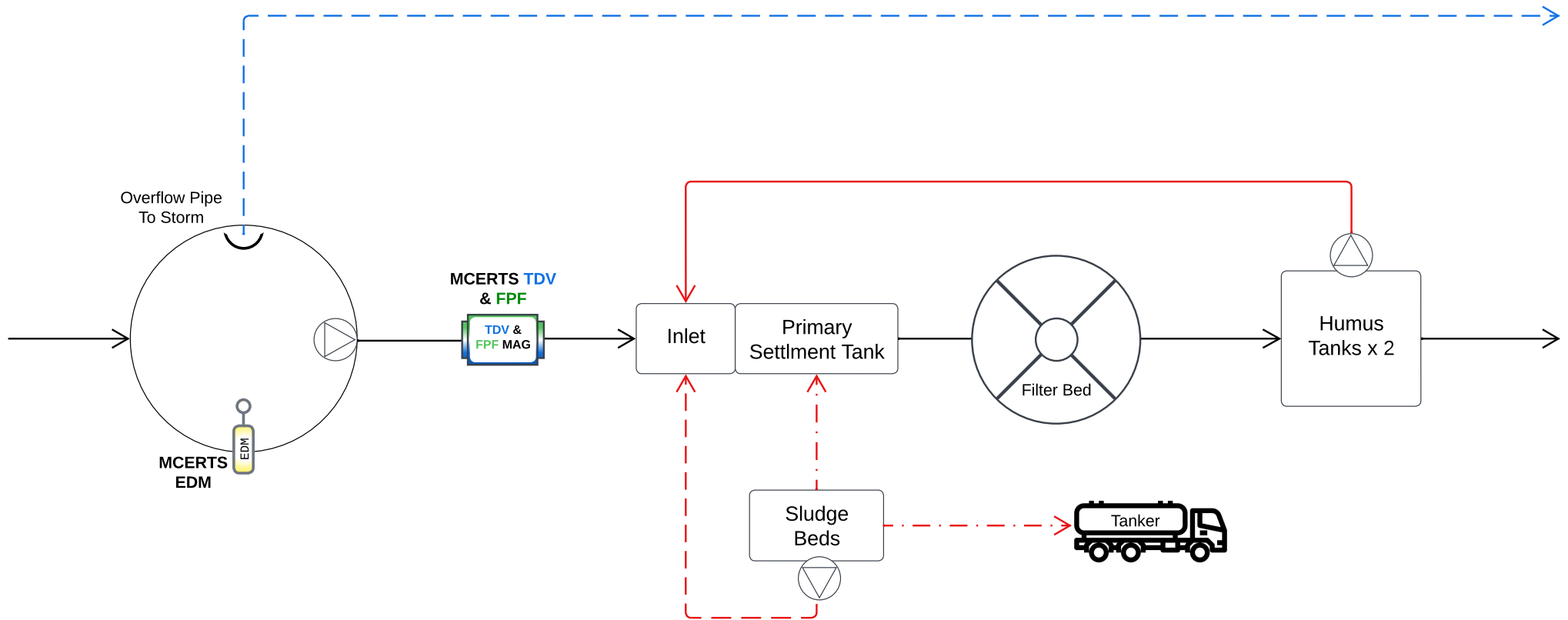
EDM Sensor Serial Number



EDM MCERTS Labels



Location of Overflow Pipe



Treated Flow	→
Storm Flow	→
Storm Overflow	→
Humus Returns	→
Top Liquors	→
De-Sludge	→
Washwater	→

Process interpreted from site visit and has not been confirmed



Process Diagram - Llandrillo WwTW

Site Owner - DCWW

Date - 29/04/2025

Comments -

Rev	Date	Drawn By	Notes
A	06/05/2025	LJB	MCERTS EDM

