

Compliance Assessment Report CAR_NRW0050632

Permit being assessed: CM0058401

For: Flint Wastewater Treatment Works, **held by:** DWR CYMRU CYFYNGEDIG

At: Chester Road, Flint, Flintshire, CH6 5DZ.

Type of assessment carried out: Check Monitoring/Sampling,

Reason: Incident Response (Incident number: 2600640).

On 18/01/2026 - 19/01/2026.

Parts of permit assessed: 2.3.2 For the discharge specified in table S3.3: (a) The discharge shall only occur when and only for as long as the flow passed forward is equal to or greater than the overflow setting indicated due to rainfall and/or snow melt.

NRW Lead Officer: Amy Chisnell.

Report sent to: CARS mailbox, CARS mailbox, on 10/02/2026.

1. Summary of our findings (full details in section 4)

Part of permitted activity assessed (criteria)	Assessment result	Non-compliant permit condition
WQ-B3 - Water Quality - Operations - Operating techniques	C3 Minor	2.3.2 For the discharge specified in table S3.3: (a) The discharge shall only occur when and only for as long as the flow passed forward is equal to or greater than the overflow setting indicated due to rainfall and/or snow melt.

Result types are explained in more detail in the 'Important Information' section below.

2. What action is required?

Criteria	Action needed	Complete by
WQ-B3	carry out an investigation and rectify issues found on site	Already

Criteria	Action needed	Complete by
		completed

Action criteria codes are listed in the 'Important information' section below.

3. What will happen next?

Any non-compliance we have identified and recorded on this form is an offence. It can result in criminal prosecution and/or suspension or revocation of your permit.

At this time, we do not intend to take any further action.

This statement does not stop us from taking additional enforcement action if further relevant information comes to light or offences continue.

4. Details of our assessment

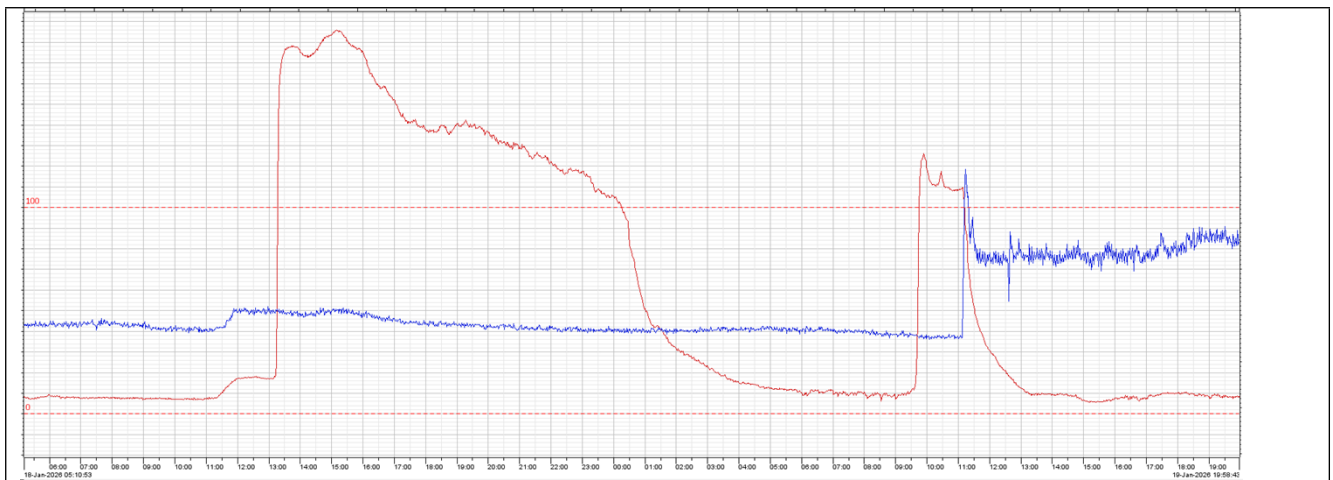
DCWW self reported a spill to the environment from the storm tanks on the 19th January 2026 at Flint WWTW prior to full FPF being achieved. An Operator attended site and found a screen level sensor fault which resulted in partial flows diverting to storm. The Operator stopped further discharges and collected a storm discharge sample as the outfall is inaccessible due to its location on the Dee Estuary.

Sample taken	Location	Result
Ammonia	Storm Tank Discharge	6.28mg/l
Turbidity	Storm Tank Discharge	36.79FTU

On the 21/01/2026 as a result of further investigation and review of the telemetry data, it was discovered that there was a spill to the environment on the previous day (18th January) also. The self report was updated to include this information.

A storyboard was completed and sent to NRW.

On the 19th January 2026, the Operator attended site and found the screen not running in auto. A storm tank discharge sample was obtained and the site operator ran the screen in hand which stopped partial flow going to the storm tank and discharging to the environment. An ICA Technician attended site shortly after to investigate the screen fault and found a fault with the Inlet level sensor. The transducer was replaced and has worked as designed since. As a precautionary measure, the transducer was also replaced on the site's other level sensor. ICA have also set up a 'fail safe' with the level sensor, if for any reason the level sensor has loss of echo, the screens will continue operating in auto.



Telemetry data shows Storm Tank Spill (red) trend against FPF (blue) trend

During the spill to environment on the 18th January the site was treating (FPF) between 36 – 50l/s. The spill lasted ~11 hours and started approximately 13:15 on the 18th and lasted until 00:15 on the 19th.

The shorter duration spill on 19th January the FPF was between 36 – 38l/s. The spill lasted ~ 1 hour and 30 mins, starting at 9:45 and stopping at 11:15 due to operator action.

The issues found on site were investigated and rectified, with no further issues.

If you have any queries about this report, or to discuss completion of any actions, please contact the NRW Officer named above.

Important information

Legal status of this report

Your permit is issued to you under the Environmental Permitting Regulations. You have a responsibility to comply with the conditions of your permit and prevent pollution/harm to the environment. You must also ensure that you comply with any other relevant legislation that may apply to your site's operations.

This report explains the findings of our assessment and any action you are required to take. We categorise non-compliance using our guidance for assessing non-compliance at regulated sites.

When we find potential non-compliance/s we will normally give you advice on how to maintain compliance.

To correct non-compliance, we may:

- require you to take specific actions
- issue a notice
- review the conditions of your permit.

Any advice and guidance we give will be without prejudice to any other enforcement response that we consider may be required.

Assessment results and non-compliance categories (used in section 1):

Assessment result	Description
Assessed (A)	Assessed or assessed in part, no evidence of non-compliance found
Action only (X)	Action required for the permit condition assessed to avoid non-compliance. No non-compliance scored at this time
Ongoing (O)	Ongoing non-compliance, not scored

Non-compliance category	Description
C1 Major	Potential to have a major, serious, persistent and/or extensive impact or effect on the environment, people and/or property
C2 Significant	Potential to have a significant impact or effect on the environment, people and/or property
C3 Minor	Potential to have a minor or minimal impact or effect on the environment, people and/or property
C4 No environmental impact	Non-compliance at a regulated site that cannot foreseeably have any impact on the environment, people and/or property

Full list of water quality action criteria (used in section 1 and 2):**WQ A: Management**

- WQ-A1 General management

WQ B: Operations

- WQ-B1 Permitted activities
- WQ-B2 The site
- WQ-B3 Operating techniques
- WQ-B4 Improvement programme
- WQ-B5 Pre-operational conditions

WQ C: Emissions and monitoring

- WQ-C1 Emissions to water
- WQ-C2 Emissions to land
- WQ-C3 Emissions of substances not controlled by emission limits
- WQ-C4 Monitoring
- WQ-C5 Installation of monitoring boreholes

WQ D: Information

- WQ-D1 Records
- WQ-D2 Reporting
- WQ-D3 Notifications

Enforcement response

Any non-compliance with a permit condition is an offence and we may take legal action against you. Action we take can include prosecution, serving a notice on you and/or suspension or revocation of your permit. See our Enforcement and Sanctions Guidance for further information.

Data protection notice

You should make sure that anyone named in this report knows that the information it contains will be processed by Natural Resources Wales to fulfil its regulatory and monitoring functions and to maintain the relevant public register(s).

We may also use and/or disclose the report in connection with:

- offering or providing you with our literature or services relating to environmental matters
- consulting with the public, public bodies and other organisations (e.g. Health and Safety Executive, local authorities) on environmental issues
- carrying out statistical analysis, research and development on environmental issues
- providing public register information to enquirers
- investigating possible breaches of environmental law
- assessing customer service satisfaction and improving our service
- Freedom of Information Act or Environmental Information Regulations requests.

We may also pass it on to our agents or representatives to do these things on our behalf.

Disclosure of information – this report will be available to view on-line

If you think this report contains commercially confidential information that should not be placed on our public register, you must contact your local Natural Resources Wales office within **fifteen working days** of receiving this report, using the contact details in the accompanying email or letter. You must give a full explanation of why it should not be added to our public register, including specifying which information is commercially confidential. We will assess your request and respond to you within twenty working days to let you know if we agree to your request.

Disputing the Content of this Compliance Assessment Report Form

If you disagree with the content of this Compliance Assessment Report form, you should submit your concerns, in writing, to the regulating officer who issued it within **15 working days** of its issue. This will be treated as a **Stage 1 review**.

If you are not satisfied with the outcome of the stage 1 review, you may request a **Stage 2 appeal**. This request must be submitted **within 21 working days** of receiving the response from the stage 1 review.

Further details on our review and appeal process are available at: [Natural Resources Wales / Appeal a regulatory decision from Natural Resources Wales](#)

Concerns Not Related to the Content of this Compliance Assessment Report Form

If your concerns do not relate to the content of the Compliance Assessment Report form, you should first attempt to resolve the issue with the regulating officer or their line manager.

If the issue remains unresolved, please contact our **Customer Contact Team**:

- **Telephone:** 0300 065 3000 (Monday to Friday, 09:00–17:00)
- **Email:** enquiries@naturalresourceswales.gov.uk

They will provide details on how to escalate your concerns through our **Complaints and Commendations procedure**.

If you are dissatisfied with our response, you may contact the **Public Services Ombudsman for Wales**:

- **Telephone:** 0300 790 0203
- **Email:** ask@ombudsman.wales

Welsh Language Standards

We are committed to establishing Natural Resources Wales as a naturally bilingual organisation. We will provide compliance reports in your preferred language.