

# MCERTS - EDM Inspection Report

## Henllan (North) WwTW

10 December 2025

Report No. CFS/ 19876v1



Version No. 25.14

<b>Site Name:</b>	Henllan (North) WwTW	
<b>Consent/Permit Holder:</b>	Dŵr Cymru Welsh Water	
<b>Site Address:</b>	Llanefydd Road Henllan Denbighshire LL16 5BD	
<b>Site Contact:</b>	Statutory & Regulatory Maintenance Manager	
<b>Contact Phone Number:</b>	mcerts@dwrwymru.com	
<b>Site Ref or Postcode:</b>	486	
<b>Grid Ref (Sensor):</b>	SJ 01976 68528	
<b>Consent/Permit No:</b>	CM0107601	
<b>Location of EDM Sensor:</b>	Storm Overflow	
<b>Number of EDMs:</b>	1	
<b>Instrument Type:</b>	Type A (non contact) - R	
<b>Instrument/Device(s):</b>	Vega Vegapuls C22 with Vegamet 862	
<b>Level Meter Serial Number:</b>	74383512	
<b>Sensor Serial Number:</b>	73229967	
<b>Date of Inspection:</b>	10/12/2025	
<b>Inspector:</b>	Tamas Borondi - MI 18 027	
<b>Inspection Report No:</b>	CFS/ 19876v1	
<b>Survey Pack:</b>	F	* Kit Inventory and calibration data recorded on central QMS database
<b>Uncertainty:</b>	± 4.6 mm	<b>PASS</b>
<b>Site Compliance:</b>	Following a site inspection, the measurement system was found to meet the requirements of the Environment Agency <i>MCERTS: requirements for installing and using event duration monitors - MCERTS Performance Standard</i> . Published 28th August 2024	

# Site Details

## Site Description

Henllan (North) WwTW is a sewage treatment works with aeration processes (see process diagram).

## Location of Event Monitor(s)

The EDM is located above the Pump sump storm overflow pipe

## Overflow Point(s) Requiring Event Monitoring

Storm Overflow (See Process Diagram.)

## Verification / Calibration

The sensor was mounted on a rigid bracket with a removable datum plate to reference the sensor height relative to the hydraulic datum. The reference height of the datum plate has been set accurately and recorded.

## Site Maintenance Arrangements, Evidence and Suitability

A routine maintenance schedule has not been confirmed but is required as part of the consent holders Quality Management System, as audited by CSA.  
The level measurement system was found to be in a satisfactory condition at the time of the Inspection.

## MCERTS Approved Product

The installed meter has a valid MCERTS Approved product certificate. Certificate number: CSA MC210360/01

## System Observed in Operation

The EDM was not observed in a storm condition during the inspection. However, there is no evidence to suggest that the system would not be suitable, during a storm event.

## Indicated Discharge Status

The indicated discharge status can be observed on site by:  
A secondary display/indicator.

## Telemetry Arrangements

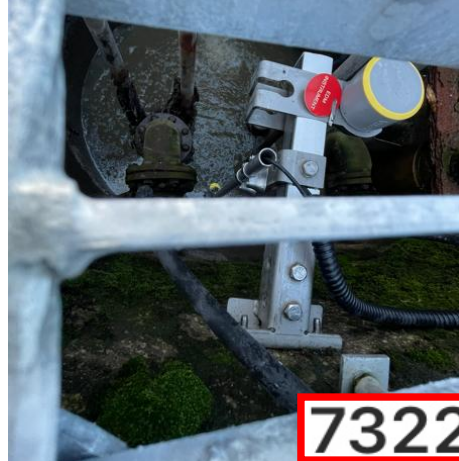
The Event Monitor data is collected on the SCADA system.  
The data is transmitted using an analogue 4/20mA signal

## Inspector's Judgements, Comments or Changes to the Setup

V1 report issued with the following amendments:  
On/Off spill points adjusted.  
Telemetry commissioned 17/02/2026



74383512



73229967

Level Monitor Display and Serial Number

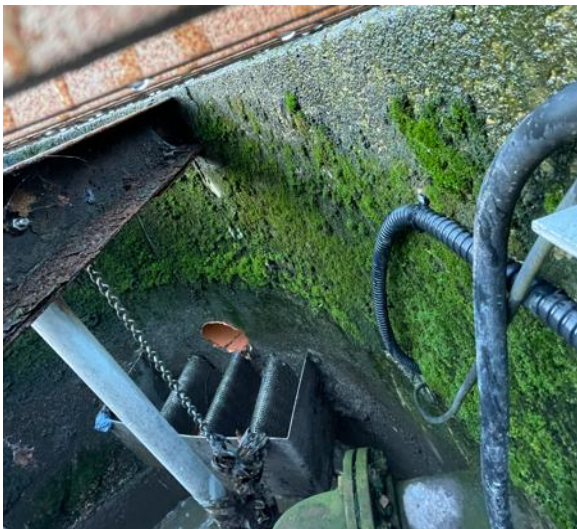
Level Sensor Location and Serial Number



Calibration Stickers



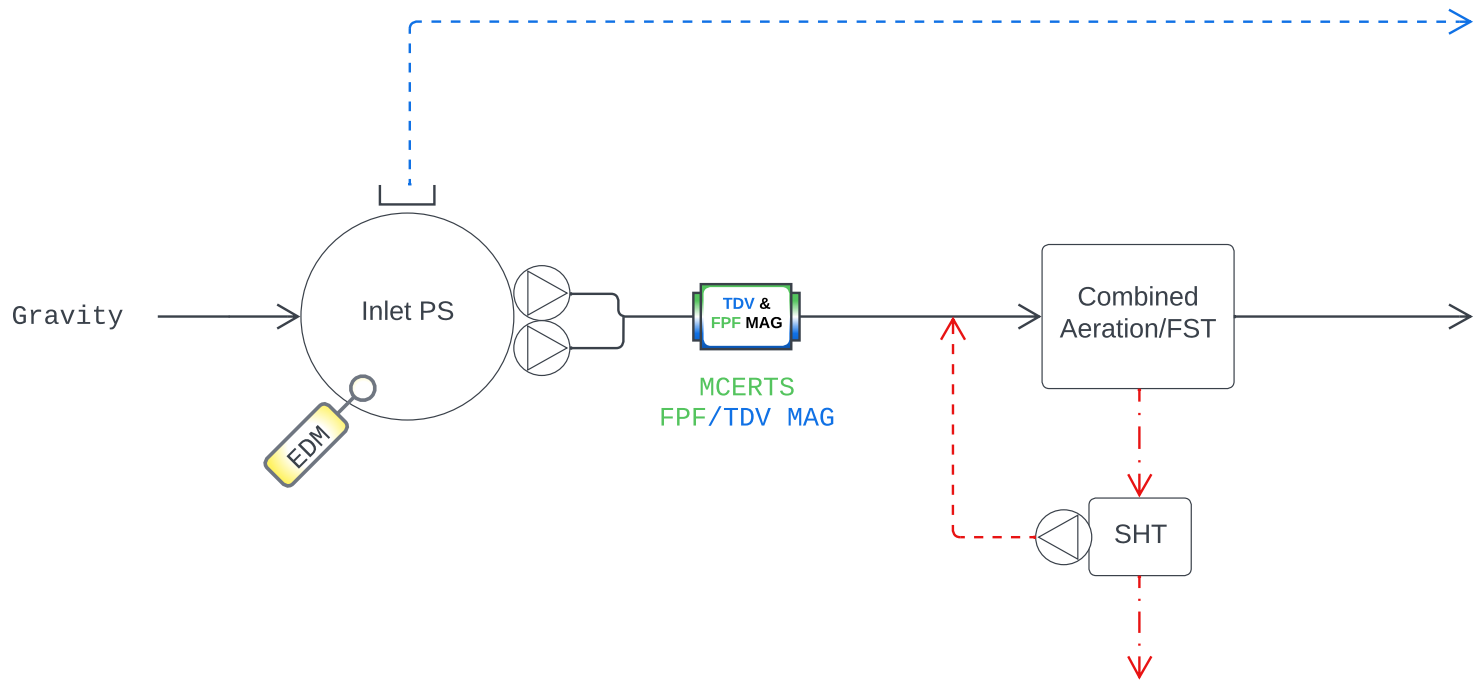
EDM Location



Overflow Pipe



Location Overflow



- Treated Flow
- Storm Flow
- Storm Overflow
- Humus Returns
- Top Liquors
- De-Sludge
- Washwater

*Process interpreted from site visit and has not been confirmed*

Comments -



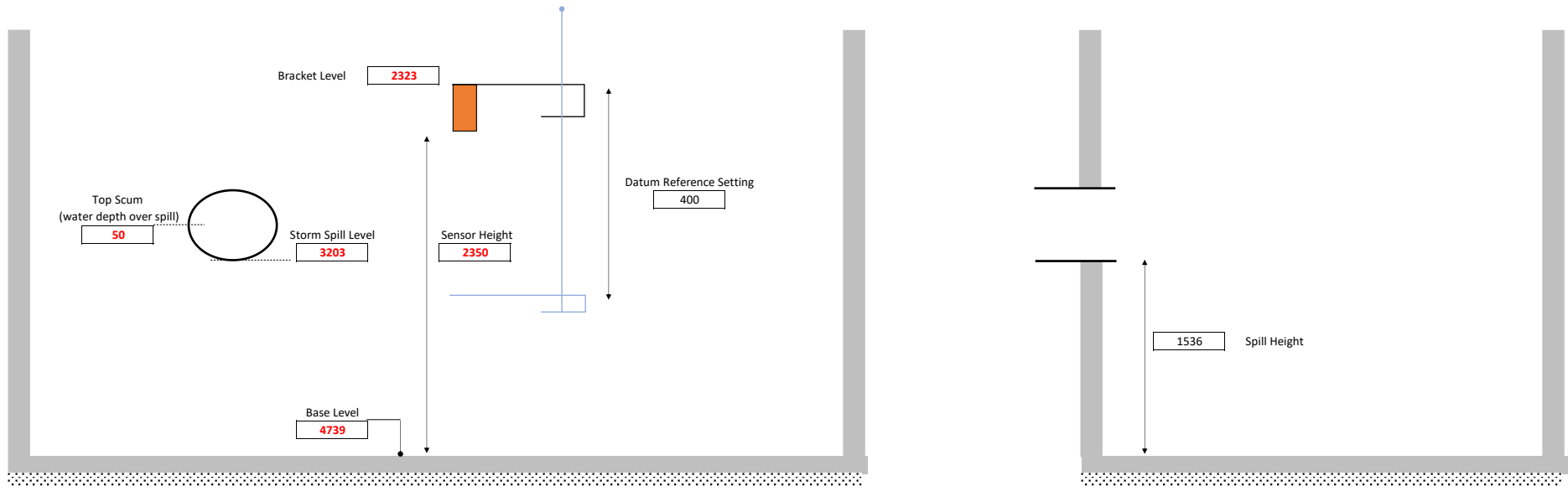
Process Diagram - Henllan WwTW

Site Owner - DCWW

Date - 10/12/25

Rev	Date	Drawn By	Notes
A	11/12/25	CSKH	MCERTS EDM Inspection

Site Name	Henllan (North) WwTW	EDM Level Meter	Vega Vegapuls C22 with Vegamet 862	Location	Storm Overflow
Event Duration Monitor	Date	10 December 2025			
Total Uncertainty	4.6 mm				



Depth Readings	
2016	2016
2016	2016
2016	2016
2016	2016
2016	2016
VAR +1	1.00

Measured Temp.	N/A °C
Instrument Temp.	N/A °C
<b>Error</b>	<b>0.0 mm</b>
Datum Level	2016 mm
Instrument Level	2013 mm
<b>Calibration Error</b>	<b>3 mm</b>
<b>Survey Error</b>	<b>2 mm</b>
Sensor height above spill	814 mm
Accuracy	0.09 %
<b>Instrument Error</b>	<b>0.71 mm</b>
<b>Estimate of wave height</b>	<b>5 mm</b>
<b>Repeatability#1</b>	<b>0.4 mm</b>
<b>Telemetry Error</b>	<b>1 mm</b>
<b>Total Uncertainty</b>	<b>4.6 mm</b>

Sensor Height	2350 mm
Base Level	4739 mm (Staff Reading)
Spill Level	3203 mm (Staff Reading)
Spill Height	1536 mm

Analogue Output	0 mm - 4mA
	2395 mm - 20mA
Storm Event Activated	1536 mm - 14.26 mA
Event De-Activated	1535 mm - 14.25 mA

Bracket Level	2323	Staff Reading
Bobbin	White	(400 mm)
Datum Ref. Ht.	2016	mm

Compliance Check	
Uncertainty < ±5mm	OK
Logging Intervals <2min	OK
Sensor distance to overflow	N/A
Sensor securely mounted	OK
Sensor Height	OK
Sunshade Required	No
Sunshade Installed	No

**Notes:** #1 Repeatability uses IS4359 14.5.1  
 Default Values: Telemetry Error for Relay = 0, for 4/20mA = 2mm  
 Total Uncertainty uses Error items in 'bold'

CFS/19876v1

All dimensions in mm, unless stated otherwise.