

SOP	REFERENCE POINT	EASTING	NORTHING
SOP 1	DIRECT PIPE ENTRY	334986.134	367352.837
SOP 2	DIRECT PIPE EXIT	334675.755	366823.633

BOREHOLE	GROUND LEVEL (mAOD)	HOLE DEPTH (m)	APPROX DISTANCE FROM CROSSING (m)
LB_21_44_CPT	5.06	1.2	<20
LB_21_44_BH	5.15	30	<20
LB_21_45_BH	4.43	30	100

SOP	REFERENCE POINT	EASTING	NORTHING
SOP 1	DIRECT PIPE ENTRY	334986.134	367352.837
SOP 2	DIRECT PIPE EXIT	334675.755	366823.633

NUMBER	TITLE
100002B0DLP80233	GEOLOGY PROFILE (RIVER DEE)
100002B0DLP80333	MONITORING DRAWING (RIVER DEE)
100002B0DLP80633	SITE LAYOUTS (RIVER DEE)
100002B0DGE08133	DESIGN RISK ASSESSMENT (RIVER DEE)
100002B0DLRV80106	LAUNCH PIT DETAIL (RIVER DEE)

NOTES:

- DO NOT SCALE OF THIS DRAWING.
- ALL LEVELS IN METERS ABOVE ORDINANCE DATUM (AOD).
- ALL DIMENSIONS IN MILLIMETERS UNLESS OTHERWISE SHOWN.
- COORDINATES AND MAPPING GRID ARE IN METERS TO OSGB 1936 National Grid.
- SCALES ON THE DRAWINGS ARE NOT APPLICABLE TO TO REDUCED SIZED PRINTS.
- TOLERANCES:
 - DEVIATIONS OF ACTUAL BORE HOLE RADIUS MUST NOT EXCEED 10%.
 - DEVIATIONS AT ENTRY POINT MAY EQUAL PIPE DIAMETER MULTIPLIED BY FACTOR ONE, BUT MUST NOT BE GREATER THAN 5.0m.
 - DEVIATIONS AT EXIT POINT MAY EQUAL 2% OF THE DRILL LENGTH BUT MUST NOT BE GREATER THAN 5.0m.
- EXCEPT FOR THE ENTRY AND EXIT POINT, DEVIATIONS FROM PLANNED PROFILE MUST NOT EXCEED 10% OF MAXIMUM LATERAL POSITION AND DEPTH.
- UTILITY INFORMATION FROM MASTER UTILITY CAD FILE.
- GROUND PROFILE FROM: 1025H0BGRV09409_CDDE01_01.
- FOR RISK MITIGATION REFER TO THE FULL DESIGNERS RISK ASSESSMENT REFERENCED.
- DRAWING TO BE READ IN CONJUNCTION WITH REFERENCE DOCUMENTS.
- PIPE TO BE INSTALLED IN MICROTUNNEL IS 36" (914mm OD), APL 5L X60, 22.23mm WT, 0.3mm THICK FBE EXTERNAL COATING.
- FOR RIVER DEE BATHYMETRIC SURVEY REFER TO C343-RF1-008-Bathymetric Survey River Dee - River Dee Contour Drawing 3D Rev 106.dwg.
- TRENCHLESS CROSSING DESIGN REPORT: 100002B0DLRH80133.
- JUSTIFICATION OF CHOSEN TRENCHLESS CROSSING METHOD REFER TO TRS-28 Direct Pipe - Technical Justification.

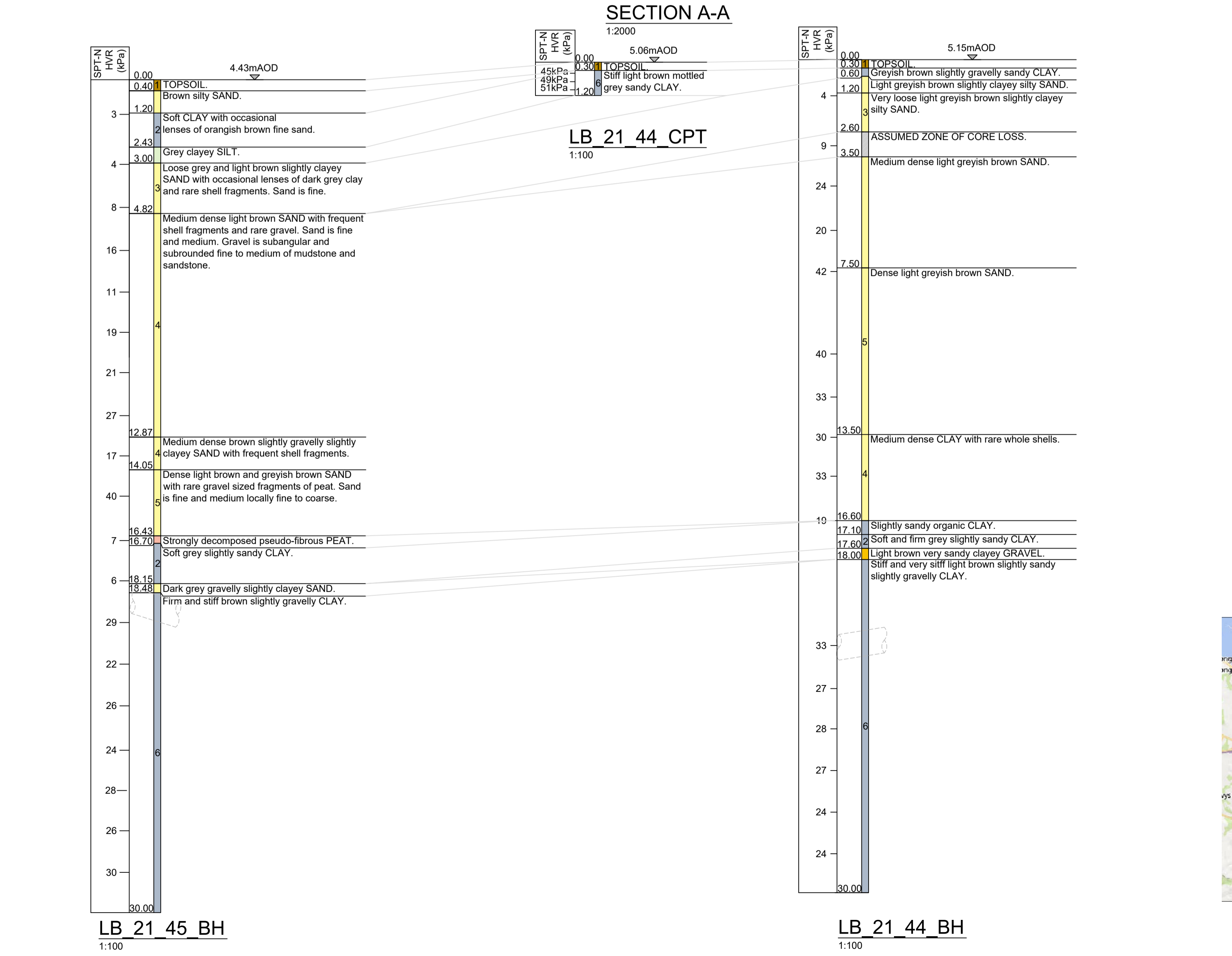
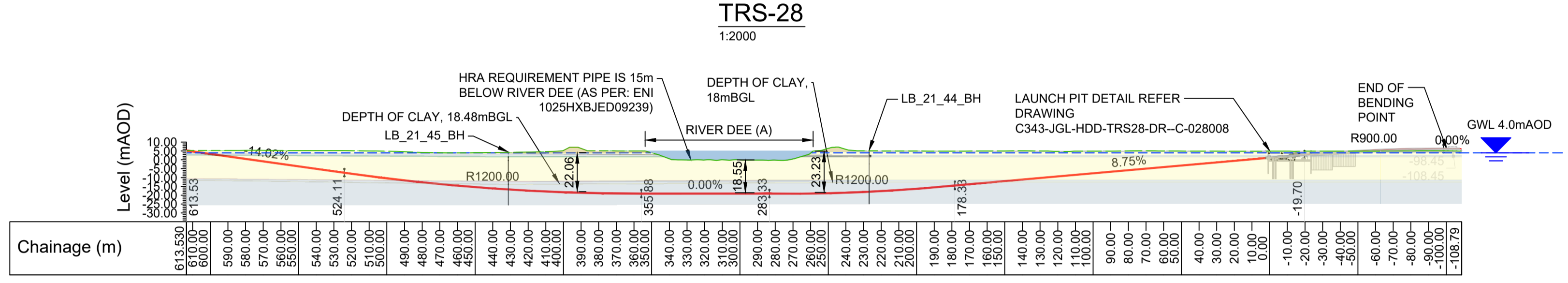
LEGEND:

- DIRECT PIPE
- ELECTRIC - SP ENERGY NETWORKS
- ORDER LIMITS
- 36" PIPELINE
- TELECOM
- GROUND WATER LEVEL
- BOREHOLE

GEOLOGY KEY:

- TOPSOIL (SILT)
- SOFT CLAY
- VERY LOOSE SAND
- MEDIUM DENSE SAND
- DENSE TO VERY DENSE SAND
- FIRM TO STIFF CLAY
- GRAVEL
- STIFF TO VERY STIFF CLAY

WATER RISE



EX-DE	01	13032020	ISSUED FOR INFORMATION	N.DESAI	R.STEAD	E.PRITCHARD
EX-DE	00	17042025	ISSUED FOR INFORMATION	E.CARAY <td>R.STEAD <td>E.PRITCHARD</td> </td>	R.STEAD <td>E.PRITCHARD</td>	E.PRITCHARD
Version Number			Description	Prepared by	Checked by	Approved by
Revision index						
Company logo and business name				Contract Code 000593		Contract Code 000593
Contractor logo and business name				Contract Code 000593		Contract Code 000593
Vendor logo and business name				Contract Code 000593		Contract Code 000593
Facility and Sub Facility Description				Contract Code 000593		Contract Code 000593
Sub Facility Description				Contract Code 000593		Contract Code 000593
Document Title				Contract Code 000593		Contract Code 000593