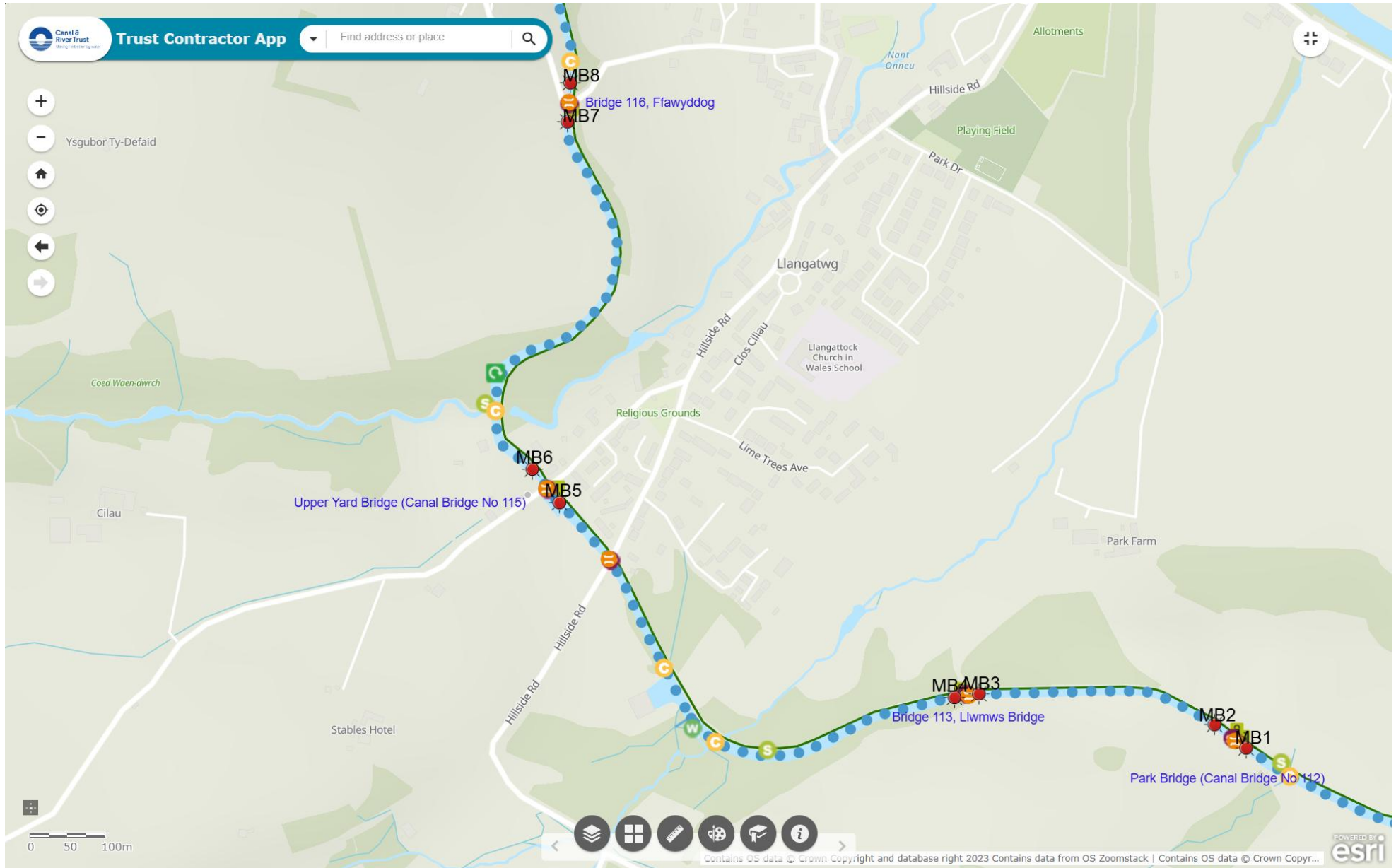
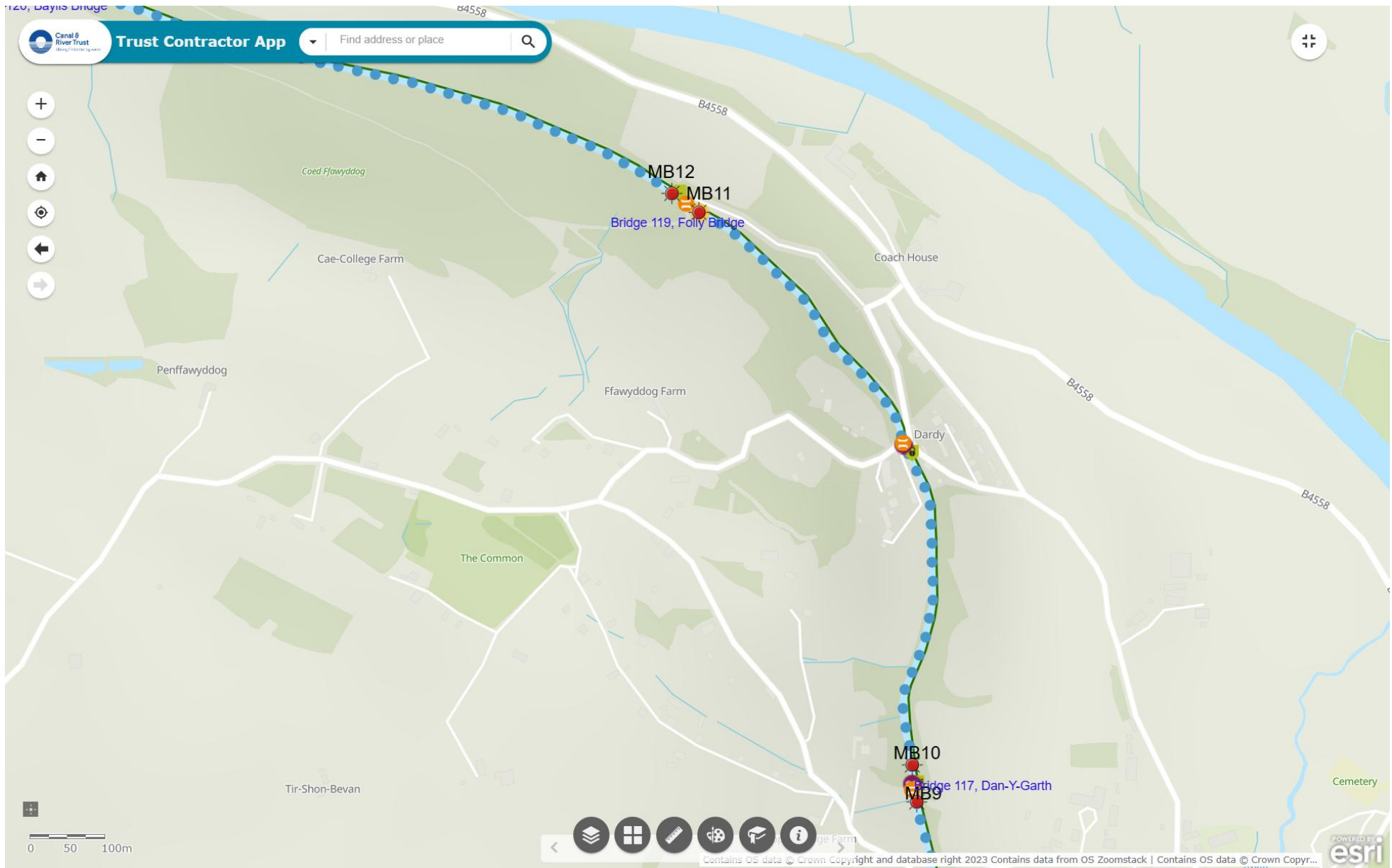


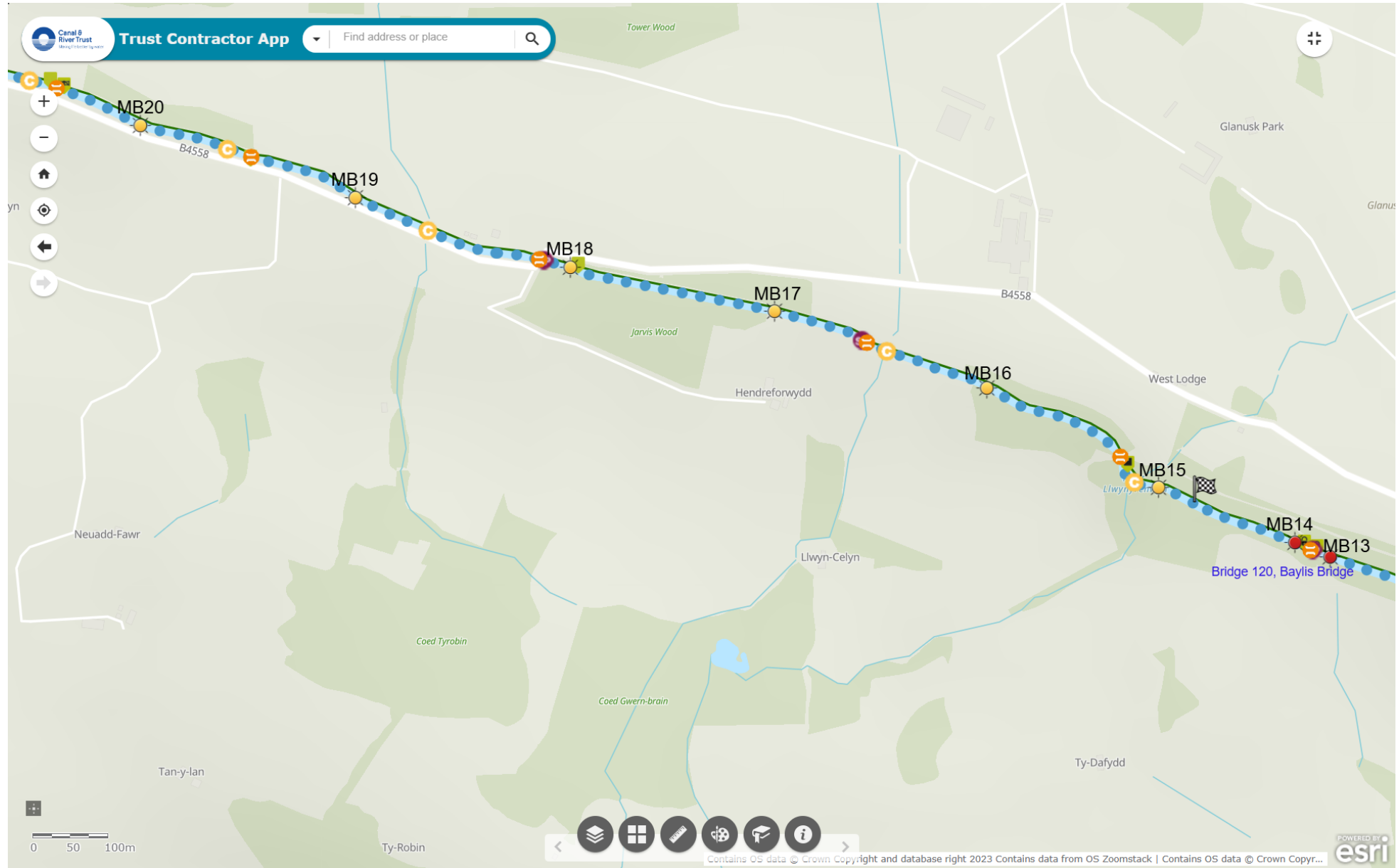
MB 1 – 8

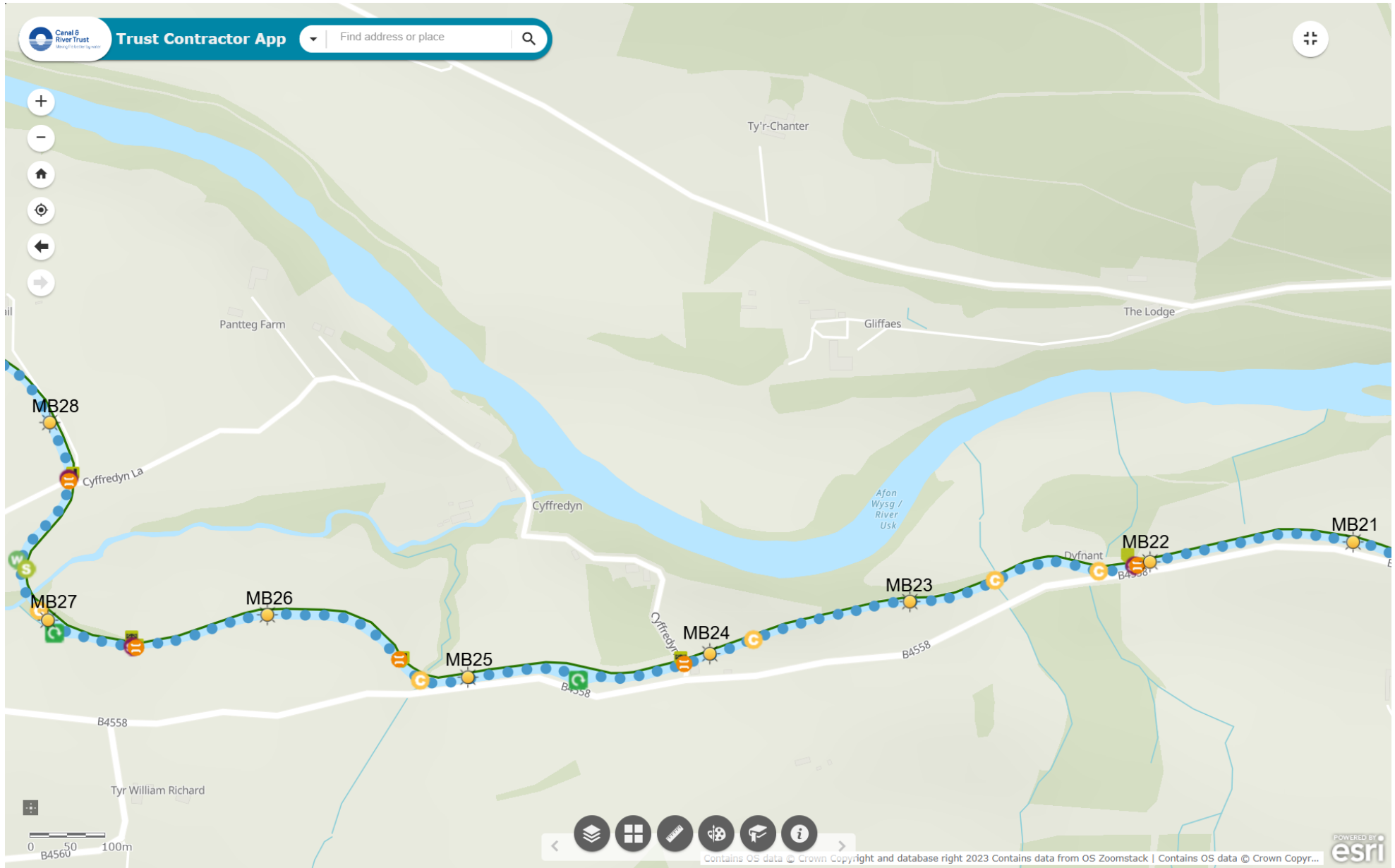


MB 9-12



MB 13 -20





MB 29 -30

The screenshot displays a web browser window with the following elements:

- Browser Tab:** Trust Contractor App
- Address Bar:** canalrivertrust.maps.arcgis.com/apps/webappviewer/index.html?id=5969bc4dc02a40cd9b1dfb4443823c2e
- Browser Extensions:** New Tab, Login, בנק הפועלים - כניס..., (1) Pinterest, Amazon.co.uk: Ama..., Instagram, halifax login - Goog..., Halifax - Welcome t..., Stainless Steel Twin..., Contact us - Bespok..., Floating Pontoon Se...
- Notification:** Google Chrome isn't your default browser. Set as default
- App Header:** Canal & River Trust logo, Trust Contractor App, Find address or place (search bar)
- Map:** Shows a canal section with markers MB230, MB29, and MB28. A bridge labeled 'Aberyail Bridge No 130' is visible. Other labels include 'Aberyail', 'Pantteg', 'Nant Yail', and 'Cyffredyn La'. A scale bar indicates 0, 30, and 60m.
- Map Controls:** Zoom in (+), zoom out (-), home, location, and navigation arrows.
- Map Legend:** Contains OS data © Crown Copyright and database right 2023 Contains data from OS Zoomstack | Contains OS data © Crown Copyr...
- Footer:** POWERED BY esri
- Windows Taskbar:** Shows 30°C Sunny, Search bar, and system tray with date and time: 16:11 12/08/2025.