




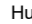
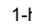
PROJECT

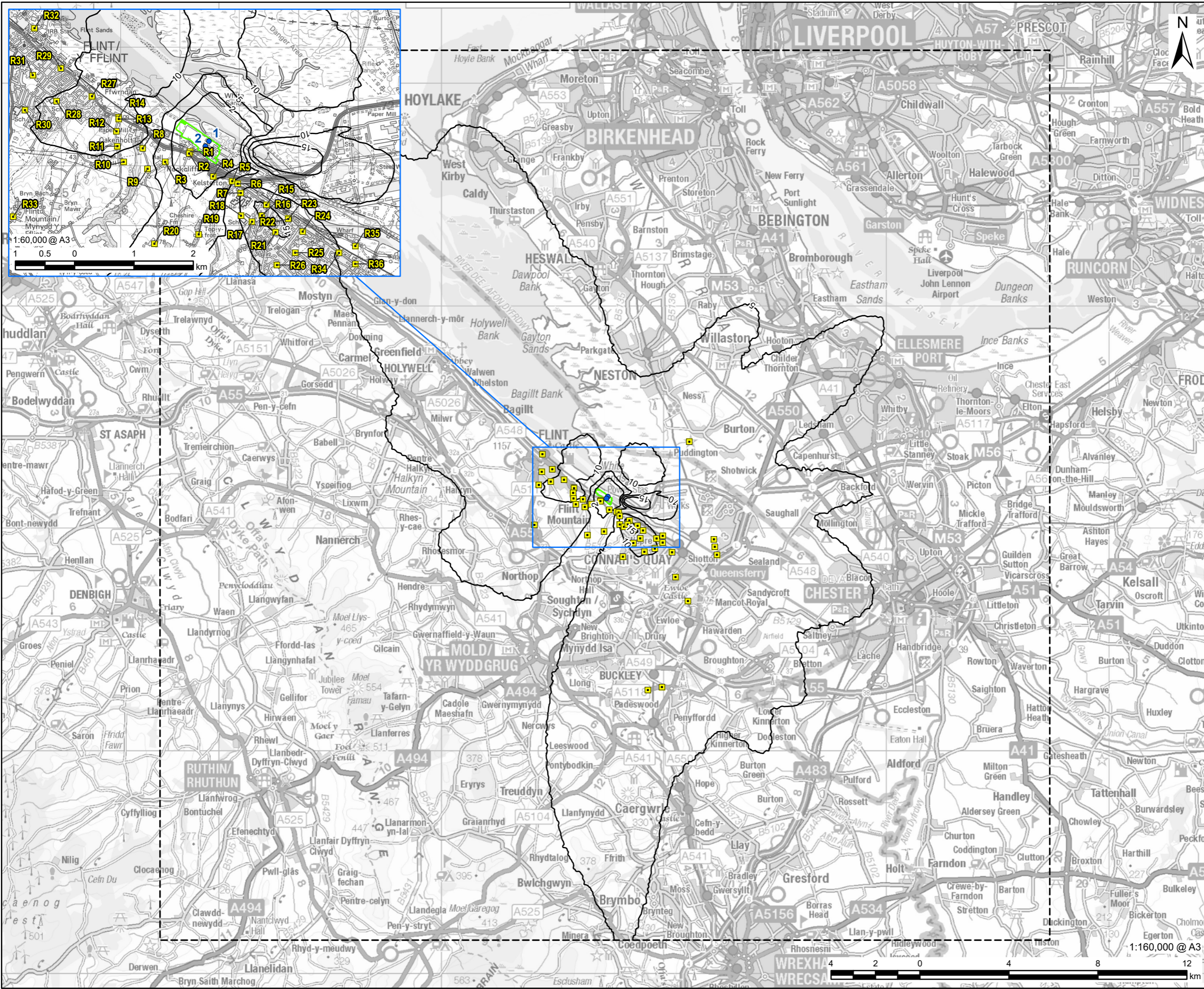
Connah's Quay Low
Carbon Power

CONSULTANT

AECOM Limited
The Colmore Building
Colmore Circus, Queensway
Birmingham, B4 6AT
www.aecom.com

LEGEND

-  Indicative Installation Boundary
-  Model Domain
-  Feed 2 - Bypass Stack
-  Human Health Receptor
-  1-hour Mean NO₂ Process Contribution (µg/m³), 99.79th Percentile of Hourly Averages



NOTES

© Crown Copyright 2025. All rights reserved.
Ordnance Survey Licence AC0000808122.
Contains OS data © Crown copyright 2025.

ISSUE PURPOSE

Environmental Permit Application

DATE

January 2026

PROJECT NUMBER

60756365

FIGURE TITLE

FEED 2 Unabated Scenario, 1-hour
Mean NO₂ Process Contribution (µg/
m³), 99.79th Percentile of Hourly
Averages, 2023 Meteorological Data

FIGURE NUMBER

Figure 30

This drawing has been prepared for the use of AECOM's client. It may not be used, modified, reproduced or relied upon by third parties, except as signed by AECOM or as required by law. AECOM accepts no responsibility, and denies any liability whatsoever, to any party that uses or relies on this drawing without AECOM's express written consent. Do not scale this document. All measurements must be obtained from the stated dimensions.