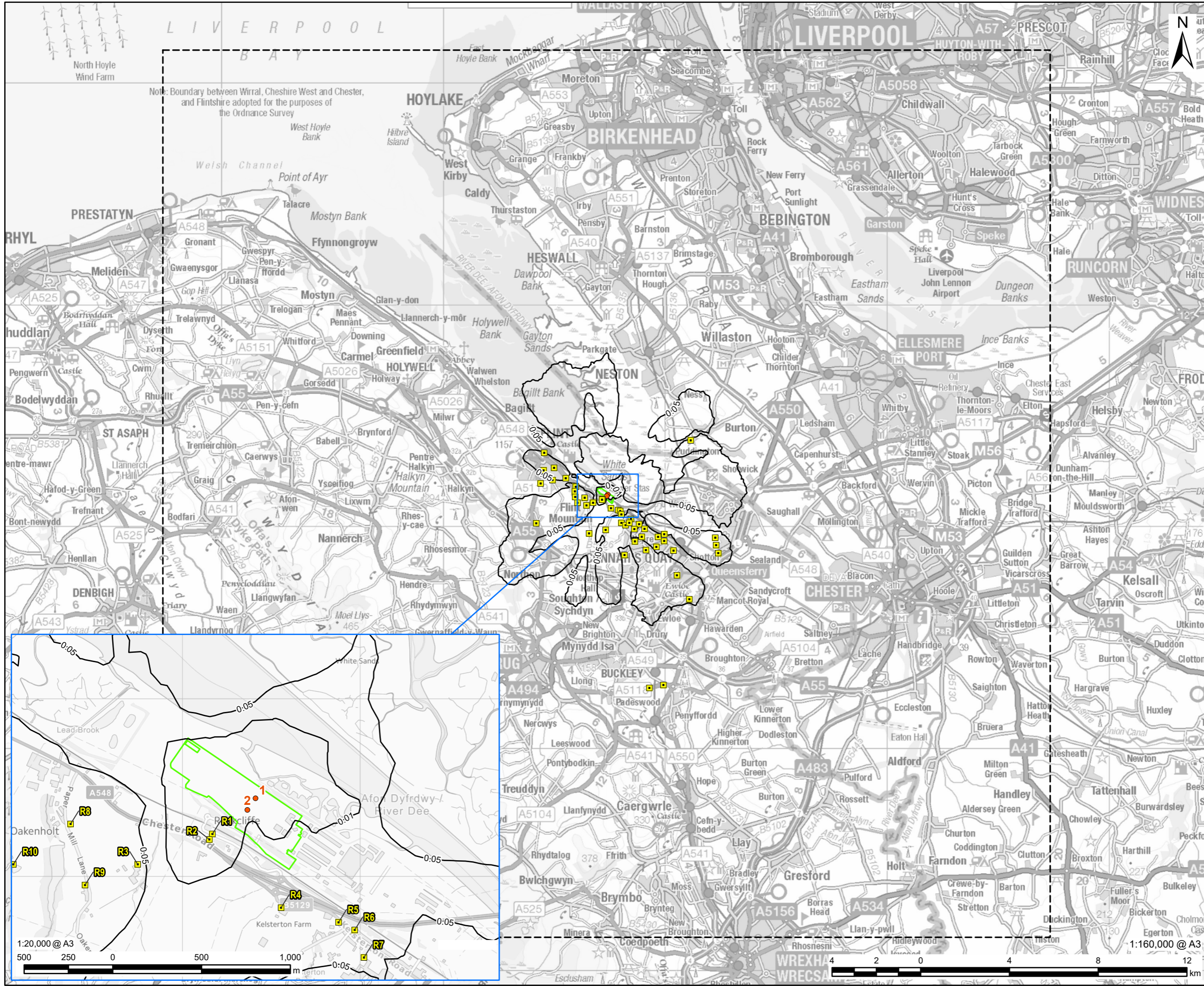


PROJECT
Connah's Quay Low Carbon Power

CONSULTANT
AECOM Limited
The Colmore Building
Colmore Circus, Queensway
Birmingham, B4 6AT
www.aecom.com

- LEGEND**
- Indicative Installation Boundary
 - Model Domain
 - Feed 2 - Absorber Stack
 - Human Health Receptor
 - Maximum 1-hour Mean Amines Process Contribution ($\mu\text{g}/\text{m}^3$), 100th Percentile of Hourly Averages



NOTES
© Crown Copyright 2025. All rights reserved.
Ordnance Survey Licence AC0000808122.
Contains OS data © Crown copyright 2025.

ISSUE PURPOSE
Environmental Permit Application

DATE
January 2026

PROJECT NUMBER
60756365

FIGURE TITLE
FEED 2 Abated Scenario, Maximum 1-hour Mean Amines Process Contribution ($\mu\text{g}/\text{m}^3$), 100th Percentile of Hourly Averages, 2022 Meteorological Data

FIGURE NUMBER
Figure 18

This drawing has been prepared for the use of AECOM's client. It may not be used, modified, reproduced or relied upon by third parties, except as signed by AECOM or as required by law. AECOM accepts no responsibility, and denies any liability whatsoever, to any party that uses or relies on this drawing without AECOM's express written consent. Do not scale this document. All measurements must be obtained from the stated dimensions.