



### Legend

Proposed Works Area

Indicative Site

Designations

● Grade II Listed Buildings

National Cycle Network

Special Areas of Conservation

Sites of Special Scientific Interest

Conservation Areas



EQ, Floor 2, 111 Victoria Street,  
Redcliffe, Bristol, BS1 6AX  
Tel +44 (0) 117 976 5432  
www.arup.com



P01	4/23/2026	A.N	K.R	G.M	--
Rev	Date	By	Chkd	Appd	Authd

Client

Capital Delivery Alliance  
Cynghroir Cyflawni Cyfalaf

Project Name

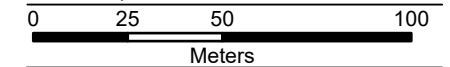
**Treborth Menai Ville**

Drawing Title

**Environmental Constraints**

Scale at A4

Scale: 1:2,000



Coordinate system: British National Grid

Sources: Esri, Vantor, Airbus DS, USGS, NGA, NASA, CGIAR, N Robinson, NCEAS, NLS, OS, NMA, Geodastatystrelen, Rijkswaterstaat, GSA, Geoland, FEMA, Intermap, and the GIS user community. Sources: Esri, TomTom, Garmin, FAO, NOAA, USGS, © OpenStreetMap contributors, and the GIS User Community

Project Number

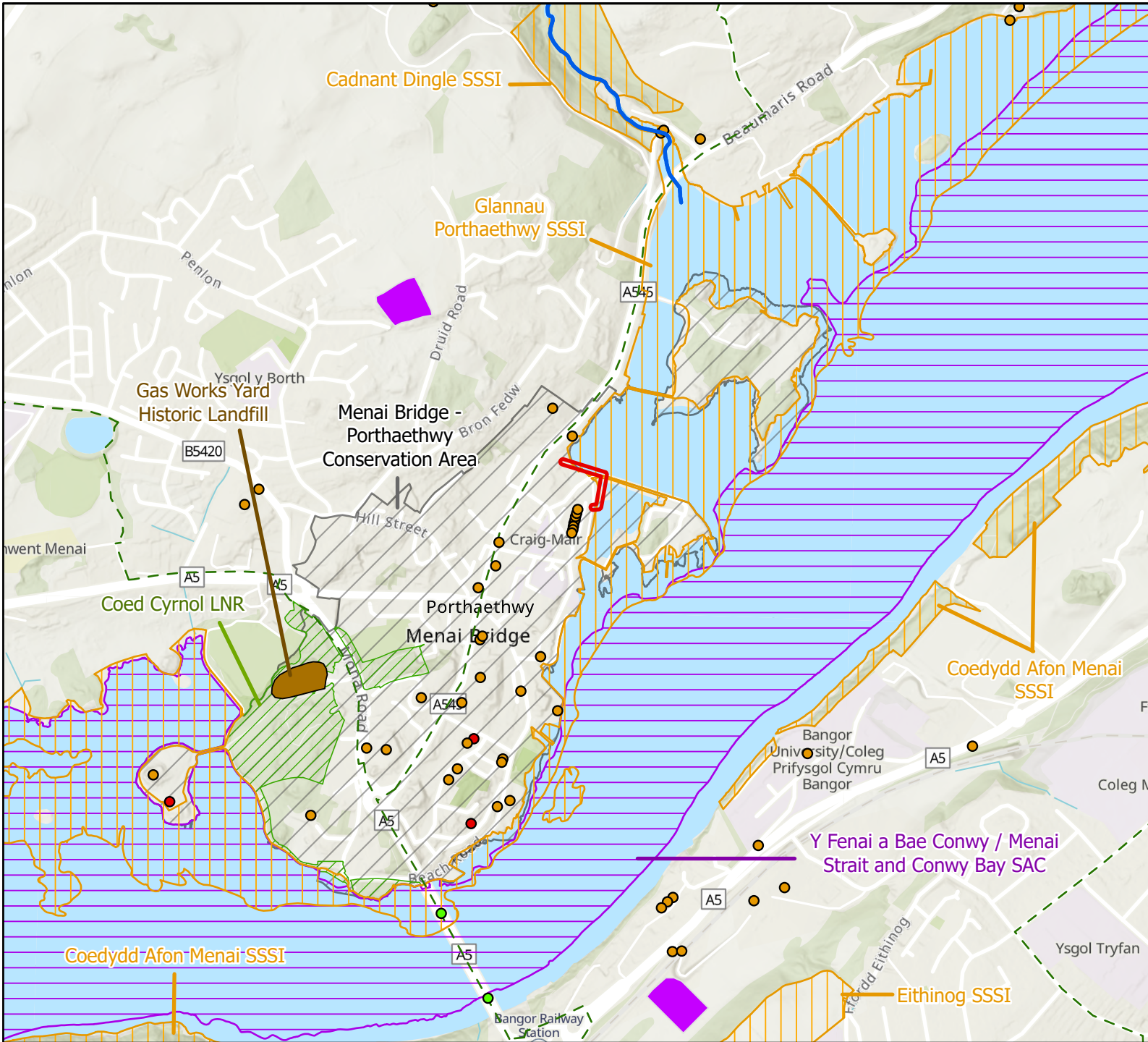
**309537-00**

Figure Number

**Figure 1**

Map Number

**1 of 3**



### Legend

#### Proposed Works Area

- Indicative Site
- Designations**
- Grade I Listed Buildings
- Grade II Listed Buildings
- Grade II\* Listed Buildings
- Priority Habitat High Sensitivity
- Historic Landfill Sites
- Local Nature Reserves
- Sites of Special Scientific Interest
- Special Areas of Conservation
- Conservation Areas
- Cadnant WFD Main River Waterbody
- National Cycle Network



EQ, Floor 2, 111 Victoria Street,  
Redcliffe, Bristol, BS1 6AX  
Tel +44 (0) 117 976 5432  
www.arup.com



P01	4/23/2026	A.N	K.R	G.M	--
Rev	Date	By	Chkd	Appd	Authd

Client  
**Capital Delivery Alliance**  
 Cyngor Cymuned Pen-y-bont-y-ddu

Project Name  
**Treborth Menai Ville**

Drawing Title  
**Environmental Constraints Wider Context**

Scale at A4  
**Scale: 1:10,000**

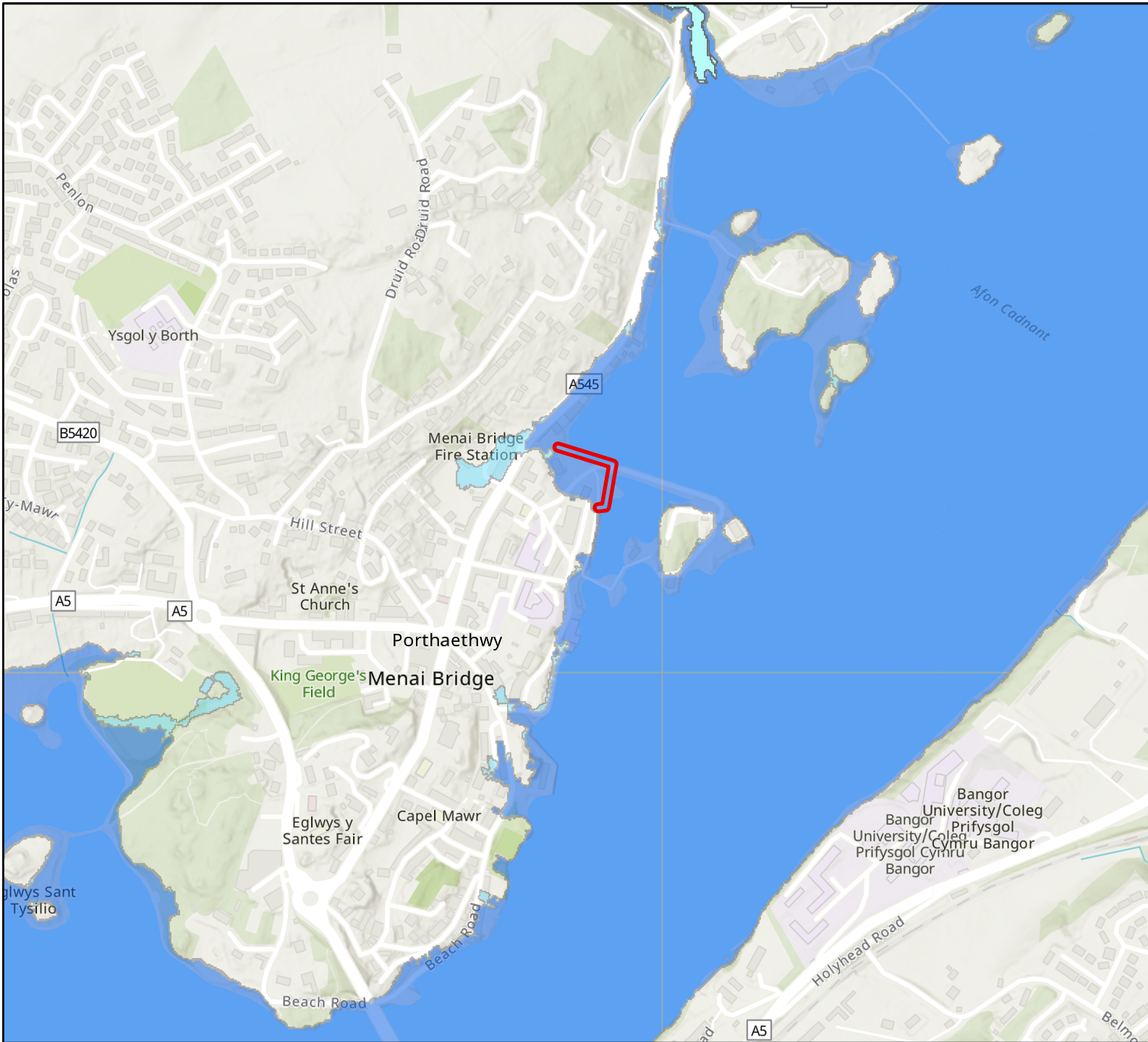
**Coordinate system: British National Grid**

Esri, Intermap, NASA, NGA, USGS, Sources: Esri, TomTom, Garmin, FAO, NOAA, USGS, © OpenStreetMap contributors, and the GIS User Community

Project Number  
**309537-00**

Figure Number  
**Figure 2**

Map Number  
**2 of 3**



# Legend

- Indicative Site
- Flood Zone 2
- Flood Zone 3
- Risk of Flooding from Rivers

# ARUP

EQ, Floor 2, 111 Victoria Street,  
Redcliffe, Bristol, BS1 6AX  
Tel +44 (0) 117 976 5432  
www.arup.com



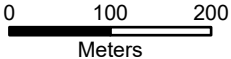
P01	4/23/2026	A.N	K.R	G.M	--
Rev	Date	By	Chkd	Appd	Authd

Client  
**Capital Delivery Alliance**  
 Cyngroir Cyflawni Cyfalaf

Project Name  
**Treborth Menai Ville**

Drawing Title  
**Coastal and fluvial flood zone map**

Scale at A4  
 Scale: 1:7,500



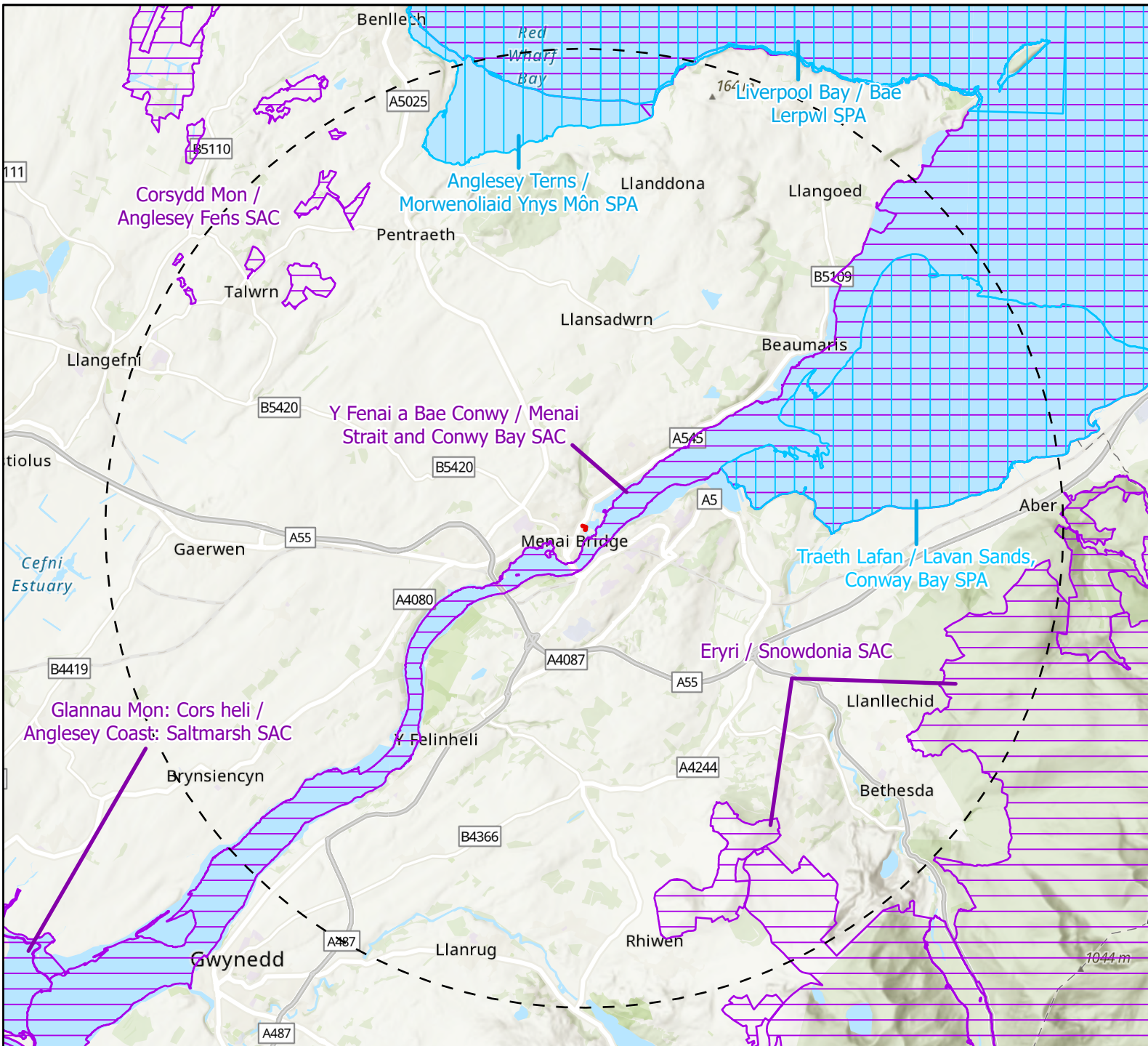
Coordinate system: **British National Grid**

Esri, Intermap, NASA, NGA, USGS, Sources: Esri, TomTom, Garmin, FAO, NOAA, USGS, © OpenStreetMap contributors, and the GIS User Community

Project Number  
**309537-00**

Figure Number  
**Figure 3**

Map Number  
**3 of 3**



### Legend

- Indicative Site
- Indicative 10km Buffer
- Special Protection Areas
- Special Areas of Conservation



EQ, Floor 2, 111 Victoria Street,  
Redcliffe, Bristol, BS1 6AX  
Tel +44 (0) 117 976 5432  
www.arup.com

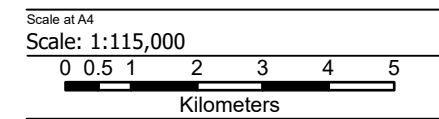


P01	4/23/2026	A.N	B.F	G.M	--
Rev	Date	By	Chkd	Appd	Authd

Client  
**Capital Delivery Alliance**  
 Cyngor Cymuned Cefnallwys

Project Name  
**Treborth Menai Ville**

Drawing Title  
**Ecology- International Designated Sites**



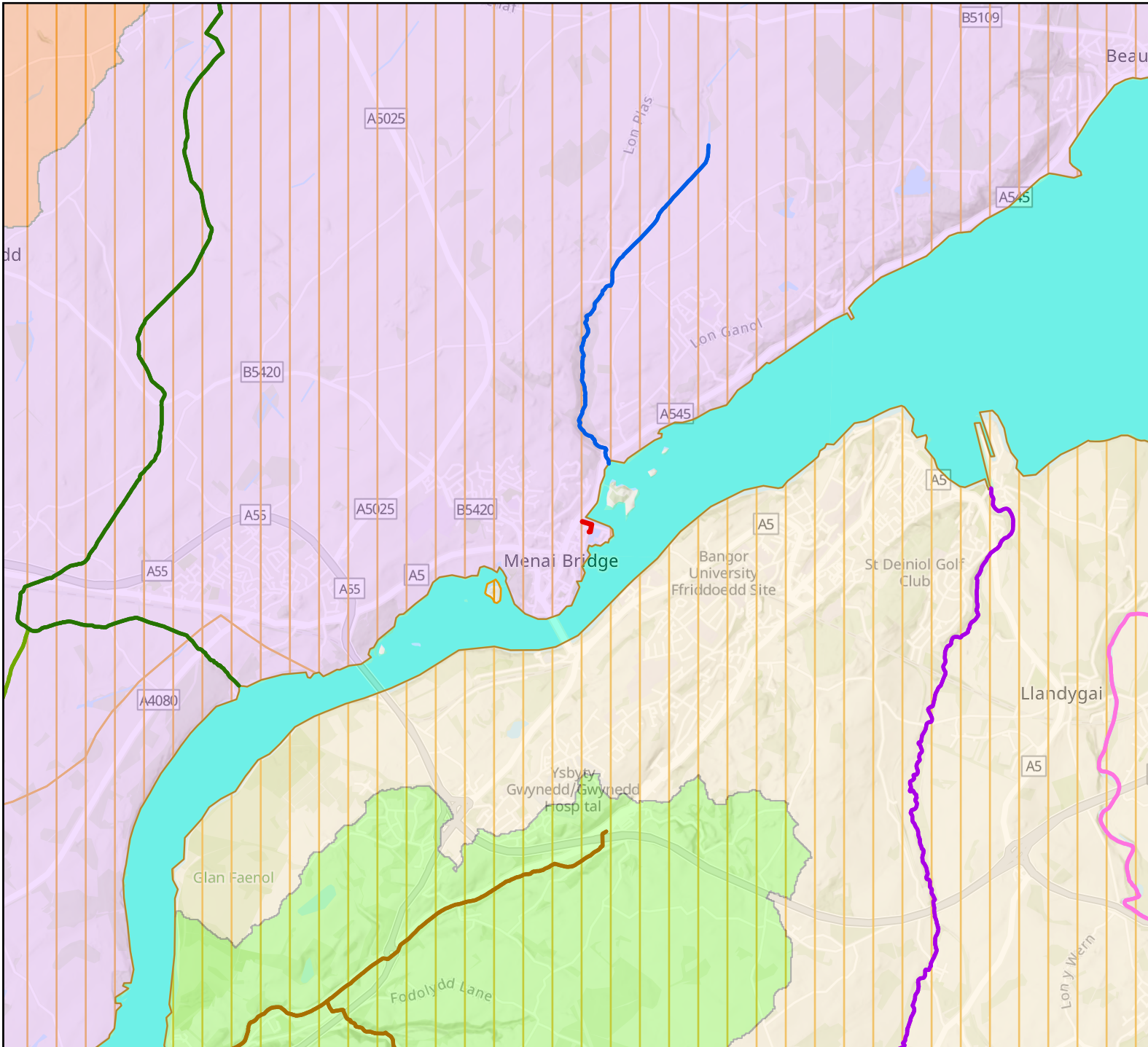
**Coordinate system: British National Grid**

Sources: Esri, TomTom, Garmin, FAO, NOAA, USGS, © OpenStreetMap contributors, and the GIS User Community, Esri, Ordnance Survey, NASA, NGA, USGS

Project Number  
**309537-00**

Figure Number  
**Figure 1**

Map Number  
**1 of 1**



## Legend

- Indicative Site
- WFD Operational Catchments**
  - Braint Cadnant Lleinog Operational Catchment
  - Cefni Operational Catchment
  - Gwyrfai Seiont Operational Catchment
  - Ogwen Ddu Operational Catchment
- WFD Groundwater Waterbodies**
  - Ynys Mon Secondary Groundwater Body
- WFD Coastal Waterbodies**
  - Menai Strait Coastal Waterbody
- WFD River Waterbodies**
  - Braint - lower
  - Braint - upper
  - Cadnant
  - Cegin
  - Nant-y-Garth (Menai Strait)
  - Ogwen - lower

# ARUP

EQ, Floor 2, 111 Victoria Street,  
Redcliffe, Bristol, BS1 6AX  
Tel +44 (0) 117 976 5432  
www.arup.com



P01	4/23/2026	A.N	R.T	G.M	--
Rev	Date	By	Chkd	Appd	Authd

Client



Project Name

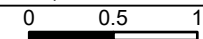
**Treborth Menai Ville**

Drawing Title

**WFD Waterbodies and Catchments**

Scale at A4

Scale: 1:45,000



**Coordinate system: British National Grid**

Esri, Intermap, NASA, NGA, USGS, Sources: Esri, TomTom, Garmin, FAO, NOAA, USGS, © OpenStreetMap contributors, and the GIS User Community

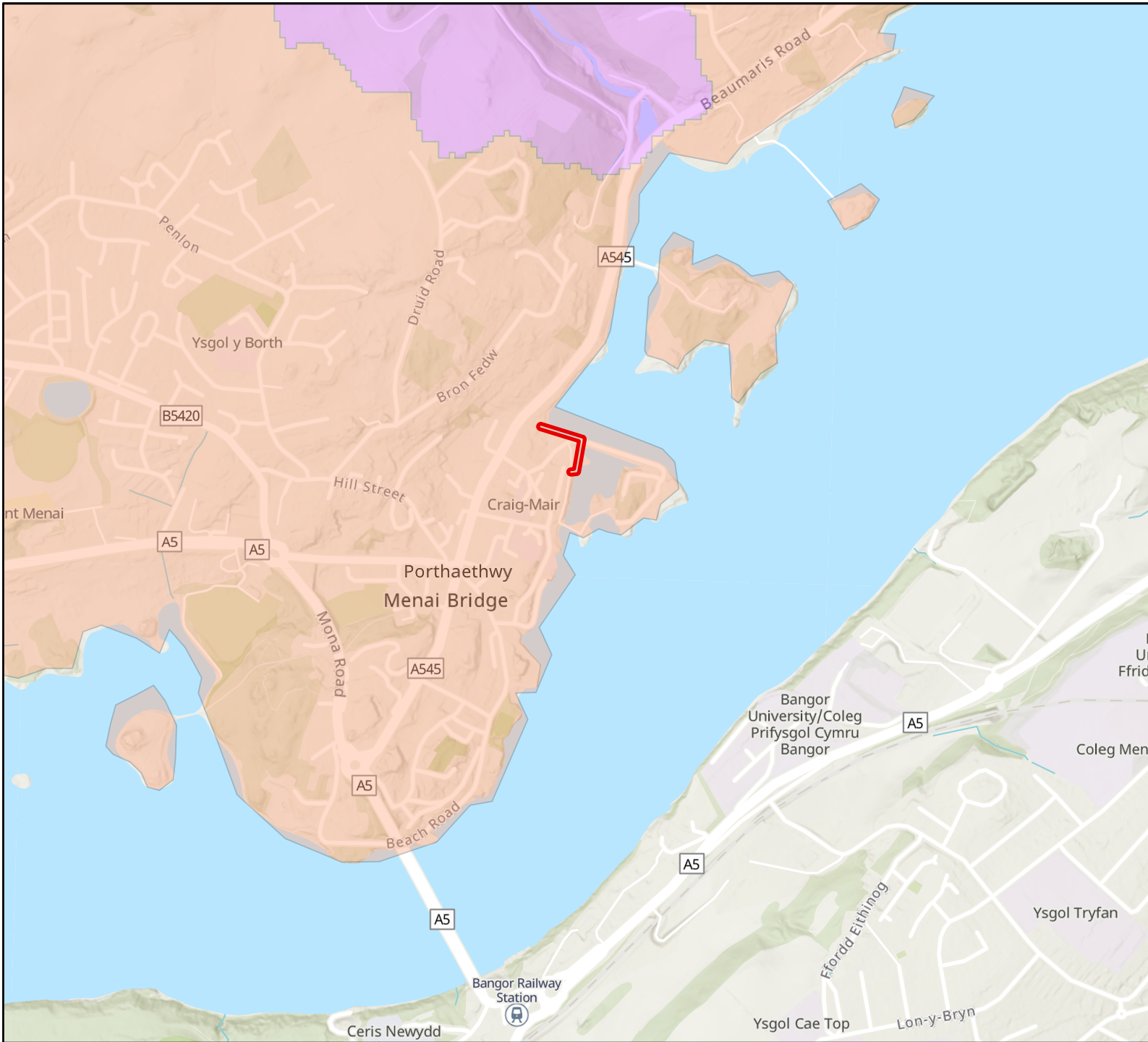
Project Number

Figure Number

Map Number  
**1 of 2**

A4

4/23/2026 5:05 PM



**Legend**

- Indicative Site
- WFD Opportunity Catchments**
- Ynys Môn / Anglesey
- Cadnant



EQ, Floor 2, 111 Victoria Street,  
Redcliffe, Bristol, BS1 6AX  
Tel +44 (0) 117 976 5432  
www.arup.com

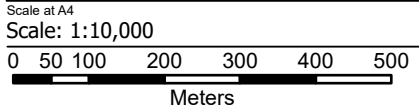


P01	4/23/2026	A.N	R.T	G.M	--
Rev	Date	By	Chkd	Appd	Authd

Client  
 Capital Delivery Alliance  
 Cyngroir Cyflawni Cyfalaf

Project Name  
**Treborth Menai Ville**

Drawing Title  
**WFD Opportunity Catchments**



**Coordinate system: British National Grid**

Sources: Esri, Vantor, Airbus DS, USGS, NGA, NASA, CGIAR, N Robinson, NCEAS, NLS, OS, NMA, Geodatasystemen, Rijkswaterstaat, GSA, Geoland, FEMA, Intermap, and the GIS user community, Sources: Esri, TomTom, Garmin, FAO, NOAA, USGS, © OpenStreetMap contributors, and the GIS User Community

Project Number  
**309537-00**

Figure Number  
**Figure 2**

Map Number  
**2 of 2**