

DCWW

Treborth Menai Ville

Report to Inform a Habitats Regulation Assessment- Screening

Reference: B17575-102503-ZZ-ZZ-RP-NB-E11200

P0.1 | 29 April 2026



© Arup 2026

This report takes into account the particular instructions and requirements of our client. It is not intended for and should not be relied upon by any third party and no responsibility is undertaken to any third party.

Job number 309537


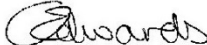

Ove Arup & Partners Limited

4 Pierhead Street
Capital Waterside
Cardiff
CF10 4QP
United Kingdom
arup.com

Document Verification

Project title Treborth Menai Ville
Document title Report to Inform a Habitats Regulation Assessment- Screening
Job number 309537
Document ref Treborth Menai Ville - Report to Inform a Habitats Regulation Assessment
File reference B17575-102503-ZZ-ZZ-RP-NB-EI1200

Revision	Date	Filename	
P0.1	29/04/2026	B17575-102503-ZZ-ZZ-RP-NB-EI1200	Description
			Draft for client review

	Prepared by	Checked by	Approved by
Name	Bethan Follis	Chelsea Edwards	Pippa Wood
Signature			

Filename			
Description			
	Prepared by	Checked by	Approved by
Name			
Signature			

Filename			
Description			
	Prepared by	Checked by	Approved by
Name			
Signature			

Issue Document Verification with Document



Contents

1.	Introduction	1
1.2	Purpose and Scope of this report	1
1.3	Legislative and Policy Context	1
1.4	Role of the Competent Authority	1
1.5	Definitions and Terminology	2
2.	The Project	3
2.1	Need for the Proposed Development	3
2.2	Site Description	3
2.3	Project description	4
2.4	Embedded control measures	5
3.	Methodology	9
3.2	Overview of the HRA Process	9
3.3	Guidance and policy	9
3.4	Data Sources and Evidence Base	10
3.5	Habitats Regulations Assessment methodology	10
4.	Stage 1 – Screening assessment: identification of likely significant effects	13
4.1	Relevant Environmental baseline	13
4.2	Potential impact pathways	17
4.3	Screening assessment	18
4.4	Screening conclusions	23
	Figures	24
	Tables	
	Table 1 Pollution prevention best practice measures	5
	Table 4-1: Potential impact pathways that could result from the Proposed Development	17
	Table 4-2 Summary of likely significant effects from the Proposed Development. 'n/a' denotes no effect to that receptor.	22
	Table 4-3 Features, conservation objectives and threats / vulnerabilities of Y Fenai a Bae Conwy/ Menai Strait and Conwy Bay Special area of Conservation	27
	Appendices	
A.1	Habitats regulations assessment process	25
A.2	Features, conservation objectives and threats / vulnerabilities of Y Fenai a Bae Conwy/ Menai Strait and Conwy Bay Special area of Conservation	26

1. Introduction

- 1.1.1 Ove Arup & Partners Ltd. ('Arup') has been appointed by DCWW to prepare a report to inform a Habitats Regulations Stage 1 Screening Assessment for the Treborth Menai Ville project (the 'Proposed Development'), located approximately NGR SH 55907 72286, due to its proximity to Y Fenai a Bae Conwy / Menai Strait and Conwy Bay Special Area of Conservation (SAC) which lies adjacent (refer to Figure 1- International Sites).
- 1.1.2 The Proposed Development comprises remedial works to an existing DCWW gravity sewer located near St George's Road, Menai Bridge, Anglesey. The purpose of the project is to repair and extend the operational life of the sewer infrastructure by installing an internal liner within existing combined sewer pipes and addressing any structural defects identified during inspection. The Proposed Development is considered to comprise Permitted Development under the General Permitted Development Order (GDPO) Part 17 Class G. Further details of the Proposed Development are provided in Section 2.

1.2 Purpose and Scope of this report

- 1.2.1 The document presents the findings of a Stage 1 Screening for likely significant effects (LSE) undertaken in accordance with Regulation 63 of the Conservation of Habitats and Species Regulations 2017 (as amended) ("the Habitats Regulations").
- 1.2.2 The purpose of the screening is to determine, using the precautionary principle, whether the Proposed Development could have a LSE on any site forming part of the National Site Network (NSN) (comprising SACs, Special Protection Areas (SPAs) and, where relevant, Ramsar sites), either alone or in-combination with other plans or projects.
- 1.2.3 If significant effects cannot be excluded, the proposal must proceed to Appropriate Assessment before any consent, permission or other authorisation may be given.

1.3 Legislative and Policy Context

- 1.3.1 The Habitats Regulations transpose the requirements of Articles 6(3) and 6(4) of the EU Habitats Directive (92/43/EEC) into domestic law for England and Wales. These Regulations were amended by the Conservation of Habitats and Species (Amendment) (EU Exit) Regulations 2019 to ensure continuity of protections following the UK's withdrawal from the EU.
- 1.3.2 The Habitats Regulations require a competent authority to consider whether any plan or project, not directly connected with or necessary to the management of a National Site Network site, is likely to have a significant effect on that site in view of its conservation objectives, either alone or in-combination with other plans or projects.

1.4 Role of the Competent Authority

- 1.4.1 Responsibility for determining whether a project or plan will have a likely significant effect on a national Site Network site lies with the 'competent authority', which in this case is Natural Resources Wales as this document forms part of a marine licence submission to NRW's Marine Licensing Team (MLT).

1.4.2 This report has been prepared by Arup to provide technical evidence and a reasoned screening opinion to assist the competent authority in discharging its duty under Regulation 63.

1.5 Definitions and Terminology

1.5.1 Following the UK's withdrawal from the European Union, the network of sites previously referred to as "European sites" is now collectively termed the National Site Network (NSN) in England and Wales, though the protection afforded under the Habitats Regulations remains unchanged.

1.5.2 For the purpose of this assessment, European sites are taken to include any sites within the NSN, including those previously designated under the Habitats Directive (92/43/EEC). These include SACs, SPAs, European Marine Sites (EMS) and Wetlands of International Importance designated under the Ramsar Convention (known as Ramsar sites). The UK and Welsh Government wishes that candidate and possible sites (e.g. cSACs and pSACs) included in a list sent to the European Commission are also considered as if they have already been classified or designated¹. A summary of these designations is detailed below:

- SACs are high-quality conservation sites that have been given strict protection under the Habitats Regulations. These important sites are selected to conserve a range of rare and vulnerable animals, plants and habitats (excluding birds).
- SPAs are strictly protected sites that have been implemented to protect rare and vulnerable bird species and their habitats.
- EMSs are marine areas protected as SACs or SPAs often managed through underlying Site of Special Scientific Interest (SSSI) or Areas of Special Scientific Interest (ASSI). These areas range from subtidal to intertidal and can comprise the entire SAC or SPA or only part of it.
- Ramsar sites are selected for their international significance relating to all ecology, botany, zoology, limnology or hydrology wetland components. The designation recognises the importance of wetlands as economic, social and environmental entities and the need to conserve them.

1.5.3 Sites contained within the NSN are designated for both Annex I habitat features and Annex II species. The statutory nature conservation organisations (in this case NRW) have a duty to publish conservation advice for European marine sites (under Regulation 37 of the Habitats Regulations). This information contains the conservation objectives and targets relating to maintaining the integrity of these features.

1.5.4 Functional land refers to off-site areas used by mobile qualifying species for feeding, roosting or movement, which are necessary to support the ecological function of the European site.

¹ Welsh Government (2009) Planning Policy Wales - Technical Advice Note 5: Nature conservation and planning.

2. The Project

2.1 Need for the Proposed Development

- 2.1.1 The Proposed Development involves remedial works to an existing Dŵr Cymru Welsh Water (DCWW) gravity sewer located near St George's Road, Menai Bridge, Anglesey (NGR SH 55907 72286). The purpose of the project is to repair and extend the operational life of the sewer infrastructure by installing an internal liner within existing combined sewer pipes and addressing any structural defects identified during inspection.
- 2.1.2 The Project aims to:
- Repair defects in an existing combined sewer serving the Menai Bridge area.
 - Improve the structural integrity and hydraulic performance of the pipework.
 - Reduce the risk of leakage, infiltration or sewer failure.
 - Extend the operational lifespan of the sewer network while minimising excavation works.

2.2 Site Description

Site location

- 2.2.1 The Proposed Development site ('the Site'), refer to Figure 2- Site Layout, is located at Menai Bridge, Anglesey (post code LL59 5ES), NGR SH 55907 72286. The Site is situated in the intertidal zone of the Menai Strait. The Site area is approximately 1000m². The Site is accessed from St Georges Road, and an access road/ causeway which leads to Ynys Faelog (private property) which is adjacent to the Site.
- 2.2.2 The Site compound will utilise the contractors existing site- Alun Griffiths Contractors, Penmynydd Road, Four Crosses, Menai Bridge LL59 5RP.

Site surroundings

- 2.2.3 Menai Bridge is set in a broadly coastal landscape on the edge of the Menai Strait, with a mix of built-up areas and open shoreline. The surrounding area typically includes residential neighbourhoods, local roads and services, alongside intertidal habitats and coastal vegetation. Views are shaped by the Menai Strait, Snowdonia national park to the east and the presence of major transport links crossing between Anglesey and mainland Wales.

Site characteristics

- 2.2.4 The Site lies within the intertidal zone. Residential properties border the Site on the landwards side, and Ynys Faelog and the Menai Strait border the Site to the seaward side. The Site is overlooked by several of the adjacent properties.
- 2.2.5 The Site compound will be situated in the contractors existing site- Alun Griffiths Contractors, Penmynydd Road, Four Crosses, Menai Bridge LL59 5RP. This area is entirely hardstanding, including a tarmacked car park and access to the Site via public roads. The compound will provide welfare facilities, material storage and plant areas.

2.3 Project description

2.3.1 The Proposed Development will focus on a short section of sewer network between four existing manholes (MH1–MH4) and a downstream pumping station. The sewer sections include 375 mm diameter and 600 mm diameter pipes, which will be rehabilitated by inserting a liner inside the existing pipes rather than replacing them, thereby reducing excavation and disruption.

Construction methodology

2.3.2 Prior to construction, a compound will be set up within the contractors existing site- Alun Griffiths Contractors, Penmynydd Road, Four Crosses, Menai Bridge LL59 5RP. The compound will provide welfare facilities, material storage and plant areas. Initial preparatory activities include:

- Site inductions and safety briefings for personnel.
- Topographic survey and setting out of the works area.
- Utility scanning (CAT and Genny) and trial holes to identify underground services.
- Establishment of traffic management and access arrangements.

2.3.3 Plant likely to be used includes:

- Mechanical excavators (approximately 8-tonne).
- Dumpers and lifting equipment.
- Mobile cranes (approximately 7.5-tonne).
- CCTV survey units and jet-vac equipment.
- Pumps for temporary sewer over-pumping.

2.3.4 The sewer sections between the manholes will be inspected and prepared prior to lining. Key activities include:

- Temporary removal of manhole cover slabs at MH1–MH4 to access the sewer.
- Installation of temporary manhole rings (approximately 1 m–1.5 m high) to protect the openings from tidal flooding during the works.
- Over-pumping of sewage flows to maintain the operation of the network during construction.
- CCTV inspection of the pipelines to identify defects.
- Jet-vac cleaning to remove debris and sediment.
- Any defects identified during the inspection will be repaired through localised patch lining prior to the main lining works.

2.3.5 The primary construction activity is the installation of an internal liner within the existing sewer pipes. Key activities include:

- Installation of temporary scaffold towers above selected manholes to facilitate access
- Positioning of cranes and liner feed trailers adjacent to the work areas.
- Scaffold towers and plants will be situated in the intertidal area- work will be undertaken at low tides and no equipment will be situated below MHWS at least one hour either side of high tide.
- Insertion and curing of a liner within the 375 mm and 600 mm diameter sewer pipes between the manholes.
- Lining of the identified pipe sections between MH1–MH2 and MH3–MH4, with additional patch repairs where necessary.

2.3.6 Once lining works are complete, the Site will be reinstated. This will include:

- Removal of temporary manhole rings.
- Reinstallation of the original cover slabs.

- Installation of new sealed and bolted manhole covers where required.
- Removal of plant, equipment and temporary works from Site.

2.3.7 Any excavated materials generated during the works will be temporarily stored at the main compound and disposed of in accordance with the Site Waste Management Plan.

2.4 Embedded control measures

2.4.1 Embedded control measures include environmental best practice working methods to be followed during the construction phase of the Proposed Development e.g. pollution prevention measures to protect the environment from contamination of surface water or dust deposition. Such measures are inherently part of the design and do not include mitigation that is included specifically to address impacts to European sites.

2.4.2 All construction works will typically be undertaken during daytime working hours (where reasonably practicable) to avoid/minimise the requirement for artificial lighting (Site construction hours will be Monday to Friday 8:00- 18:00, and Saturday 08:00- 13:00).

2.4.3 Embedded control measures during construction are described in the Construction Environmental Management Plan (CEMP) (Refer to Marine Licence Appendix B- Construction Environmental Management Plan) which sets out strict pollution prevention and biosecurity measures, including buffers from watercourses, silt control, and emergency spill procedures.

2.4.4 The CEMP includes measures such as those contained within the Environment Agency’s Guidance for Pollution Prevention 5 (PPG5)², Pollution Prevention Guidelines 6 (PPG6)³, and GPP12 pollution incident response planning. All construction activities will be carried out in accordance with guidance outlined within CIRIA best practice guidance⁴.

2.4.5 The CEMP contains the following information and best practice methods to mitigate the risk of pollution:

Table 1 Pollution prevention best practice measures

Activity	Control Measures
Operation of plant and equipment	Above ground oil storage tanks: GPP2 ⁵ Working at construction and demolition sites: PPG6 Generators/tower lights/ pumps should be stood on plant nappies
Storage of fuel and chemicals	Oil and fuel to be stored in accordance with the Oil Storage Regulations Storage containers to be in good condition with proper fitted lids and secured against vandalism Spill kits to be readily accessible in the event of a spillage Storage areas to be at least 10m away from controlled waters

² Guidance for Pollution Prevention: Works and maintenance in or near water (GPP5), NetRegs. Available from: <https://www.netregs.org.uk/media/1418/gpp-5-works-and-maintenance-in-or-near-water.pdf> [Last accessed April 2026]

³ Working at construction and demolition sites: PPG6, Pollution Prevention Guidelines, Environment Agency. Available from: https://www.gov.uk/government/uploads/system/uploads/attachment_data/file/290139/pmho0412bwfe-e-e.pdf [Last accessed April 2026]

⁴ CIRIA (2018) CIRIA Available from: <http://www.ciria.org> [Last accessed April 2026]

⁵ <https://www.netregs.org.uk/media/1299/gpp-2-pdf.pdf> [Last accessed April 2026]

Highway works	Drains to be protected, where required and practicable
Working in/near water	Use biofuels in all plant. Follow works & maintenance in or near water: GPP5

2.4.6 The minimum pollution prevention requirements as outlined in the CEMP are listed below. The below practices/mitigations typically apply to the majority of construction sites and form general good practice:

- A Traffic Management Plan (TMP) may be implemented that will provide designated routes that will be used by heavy plant and for vehicle movements, particularly during topsoil stripping and excavation of soils.
- Areas subject to soil stripping and not forming part of the active construction zone will be demarcated as off limits to vehicle tracking. This will prevent unnecessary disturbance of soils.
- Wheeled plant such as telehandlers and dumper trucks should have their wheels cleaned and excess sediment removed from around the wheel housing prior to moving onto the wider public highway realm.
- It is advisable that a wheel washing facility is set up at the construction zone entrance/exit point should sediment adhere to vehicles. All vehicles leaving the construction zone should have their tracks/wheels washed via the use of a pressure-washer bowser, the resulting runoff will have to be controlled so as to not run onto roadways, into gullies or cause localised flooding of the entrance/exit.
- Any pollution incidents (fuel or oil spills) will be cleaned up immediately following the incident. Any wastes will be removed from site for off-site disposal to prevent contamination from becoming entrained within the surface water infiltration system under the necessary permits and procedures.
- Contact where spill/incident/clean-up is beyond normal project capability: OHES Environmental 0333 600 2424
- No fuel storage will be allowed close to surface water attenuation ponds, stilling basins, trenches and weirs or directly close to surface waters and surface drainage
- Adhere to the Water Resources (Control of Pollution) (Oil Storage) (Wales) Regulations 2016
- Storage areas will not be located within 30m of surface water drains or highway gullies.
- Drums will be stored in bunded areas with a minimum capacity of 25% of the total volume contained within the bund, or 110% of the largest container, whichever is greater. Drums will be maintained in good condition, fitted with lids and labelled to indicate the contents.
- Trained operatives only will carry out refuelling of plant and equipment.
- Static combustion engine plant (e.g. compressors, lighting sets) will be integrally bunded or placed on drip trays.
- Vehicles are to be parked in a dedicated site car park. On street parking is to be prevented to allow a road brush access to clean the full width of the road and prevent surface waters from flowing past operational gullies.
- General good housekeeping shall be maintained across Site, including the appropriate stockpiling of soils at a suitable distance from construction zone boundaries (at least 10m from watercourses in line with best practice), surface water features, gullies and manhole covers to prevent debris from blocking up drainage infrastructure.
- The placement of gully guards in gullies maybe be installed during development for the duration of the construction project. These are to be inspected regularly and importantly replaced or cleaned as necessary, with a record kept. If found to be damaged, gully bags should be replaced immediately.
- The placement of a terram layer within all other non-operational manholes during construction, such as storm drain covers. These are to be inspected and replaced, when necessary, with a record kept.
- Pumps will be regularly checked for leaks and will be maintained in accordance with the manufacturer's specification.

- Spill kits will be provided within close proximity to fuel and oil storage areas and operatives will be trained in their use.
- Fire extinguishers will be placed at re-fuelling points and will be ready to hand.
- Should a significant fuel spill occur, such as during a fuel bowser delivery, the appointed Environment Advisor will be contacted to obtain further advice. Spill kits would be deployed in the interim and a readily available stock will be kept on site in case of emergency
- Re-fuelling areas should be bunded, with spill kits located in close proximity to contain releases. Plant nappies will be utilised when refuelling is being undertaken.
- All delivery vehicles including HGVs should have their wheels washed prior to leaving the construction zone in order to prevent silt from being mobilised onto the public highway.
- Any excess sediment or silt slurries on roadways, particularly close to the construction zone entrance/exit points should be regularly scraped. This may be required multiple times each day, depending upon the prevailing weather conditions and traffic volume. Furthermore, it may need to be carried out more frequently during the day as opposed to just the start and end of the working day. Sediment and silt slurries should not be passed into surface water drainage systems and gullies.
- Sediment and silt slurries should be stored within the Site boundary or an agreed storage area, away from gullies, drains and surface water receptors. It may be necessary to construct a temporary bunded area to contain this material, allowing it to dry out. Regular maintenance and cleaning of this bunded area should be undertaken to ensure continued capacity during wetter conditions.
- To clean excessive silt slurries at construction zones the use of road sweepers should be avoided. Road sweepers are not designed for this activity and further spread sediment on roadways if overwhelmed; or move sediment into the surface water drainage system. Agricultural brushes/road brushes are a good alternative system to move heavy sediment from roads.
- It is particularly important to note that road sweepers should not be used to clean up any hydrocarbon spillages in conjunction with undertaking general silt sweeping. This would result in the contamination of the silt that would subsequently require special treatment and/or costly off-site disposal as hazardous waste.
- Excavation water will not be discharged direct to surface water drains without prior treatment to remove silt.
- As a minimum, daily inspection of the roadways and surface water features should be undertaken.

2.4.7 The following measures are outlined within Contractor Risk Assessment and Method Statement (RAMS) (Refer to Marine Licence Appendix A- Risk Assessment and Method Statement) for the Proposed Development:

- All excavated material to be stored in the main site compound away from the work area.
- Disposal of Surplus Materials and waste to be in conformance to the Site Waste Management Plan.
- Noise levels shall be minimized where possible and all works will be within the Site daytime working hours.
- Refueling of plant to be carried out in accordance with the most recent approved procedures and 30m away from any water course.
- Spill kits will be positioned on site and an incident response plan put in place.
- All fuel will be stored in a secure, double bunded container (110% capacity) and all equipment containing fuel shall be stored on a plant nappy.
- Any spills will be reported immediately by the works supervisor to the Environment Advisor in line with the Site environmental incident response plan.
- Waste management will be conducted in accordance with the Site Waste Management Plan.
- Works to be planned around weather and tide times.
- Residents to be informed and parking on causeway to be coordinated with residents.

- Excavator to operate on bio oil and have spill kit/nappy, and only in marine environment for duration of works.
- Bauer connections or flanged connections for over pumping line to be placed outside tidal range where possible and plant nappy/spill decks to be placed between joints to mitigate risk of any water from line being leaked into environment when operating/disconnected.
- Liner to be prepared off-site.
- Safe System of Work (SSOW) and permit to work system.

3. Methodology

- 3.1.1 This assessment has been undertaken in accordance with the Habitats Regulations, relevant Government guidance, and associated case law.

3.2 Overview of the HRA Process

- 3.2.1 The process comprises three key stages, as follows and illustrated in Appendix A.1:

1. **Stage 1 – Screening for LSE:** This determines whether the proposal, alone or in combination, is likely to have a significant effect on any European site in view of its conservation objectives; and
2. **Stage 2 – Appropriate Assessment (AA):** Undertaken only if the screening cannot rule out LSE. It considers whether the proposal would have an adverse effect on the integrity of any European site, and, if necessary, identifies mitigation or alternatives.
3. **Stage Three:**
 - **Derogation Assessment of Alternative Solutions:** Identifying and examining alternative ways of achieving the objectives of the project to establish whether there are solutions that would avoid or have a lesser effect on the site(s).
 - **Imperative reasons of over-riding public interest (IROPI) and Compensation:** Where no alternative solution exists and where an adverse effect on site integrity remains, the next stage of the process is to assess whether the development is necessary for IROPI and if so, the identification of compensatory measures needed to maintain site integrity or the overall coherence of the designated site network.

- 3.2.2 An important aspect of the process is that the outcome at each successive stage determines whether the next stage in the process is required.

- 3.2.3 This report relates solely to **Stage 1 – Screening for LSE**, which has been undertaken applying the precautionary principle, as established in Waddenzee (C-127/02). The precautionary principle requires that, where uncertainty exists, it must be assumed that a significant effect may occur unless it can be excluded on the basis of objective scientific evidence.

- 3.2.4 Embedded design features forming integral parts of the project have been taken into account at this stage, whereas mitigation measures specifically intended to avoid or reduce effects on the designated site alone cannot be considered until any subsequent Appropriate Assessment (People Over Wind, C-323/17).

3.3 Guidance and policy

- 3.3.1 This information has been informed by the following guidance and policy documents:
- UK Government Guidance (applies to England and Wales) on HRA⁶;
 - Welsh Government (2025) Planning Policy Wales (12th edition)⁷;

⁶ Habitats Regulations Assessments: protecting a European site [Habitats regulations assessments: protecting a European site - GOV.UK](#)

⁷ <https://www.gov.wales/sites/default/files/publications/2024-07/planning-policy-wales-edition-12.pdf>

- Welsh Government (2009) Technical Advice Note (TAN) 5: Nature Conservation and Planning⁸;
- Welsh Government (2025). Habitats regulation assessment (HRA guidance)⁹; and
- Tyldesley, D. and Chapman, C. 2018. People Over Wind¹⁰ – some Implications of the Judgment. The Habitat Regulations Journal, Issue 10, pp. 19 – 23.

3.3.2 This guidance is intended to improve understanding of how projects are regulated under the Habitat Regulations. This guidance draws on experience throughout Britain and on case law in Britain and Europe.

3.4 Data Sources and Evidence Base

3.4.1 In addition to the guidance noted above, sources were used to gather information on the European sites to inform this assessment such as the Core Management Plans for the relevant European sites, JNCC Standard Data Forms and citations:

- Natural Resources Wales (NRW) (and legacy body Countryside Council for Wales (CCW))¹¹ website;
- MAGIC (Multi-Agency Geographic Information for the Countryside)¹² website;
- Joint Nature Conservation Committee (JNCC)¹³ website; and
- Project-specific information, including the Contractors RAMS and CEMP.

3.4.2 Information on the interest features of European sites has been obtained from the information provided on the JNCC website and NRW website. In particular, the Core Management Plans for the sites were obtained and have been used to inform this assessment. These documents provide the main elements of NRW's management plan for European sites along with the Conservation Objectives for the features.

3.4.3 The features will be considered to be in Favourable Conservation Status only when the conservation objectives are being met. These objectives therefore provide an indication of the type of effects which could affect the qualifying features of European sites. An impact which could affect the ability of a site or feature to meet its objective could be considered to be an adverse effect on the integrity of the European site concerned.

3.5 Habitats Regulations Assessment methodology

3.5.1 For the purposes of this report to inform an HRA, the Screening criteria applied comprises a 10km Zone of Influence (ZoI) from the Proposed Development, which is considered an appropriate distance to identify LSE as a result of the Proposed Development including the potential for indirect impacts such as through hydrological connectivity. European sites within 10km of the Proposed Development were identified using Geographic Information System data from datasets downloaded from the JNCC, MAGIC and NRW data sources. Sites beyond the ZoI were scoped out of the Screening assessment on the basis that given this

⁸ Welsh Government. (2009). Planning Policy Wales - Technical Advice Note 5: Nature Conservation and Planning. Cardiff: Welsh Government.

⁹ <https://www.gov.wales/habitats-regulations-assessment-hra-guidance>

¹⁰ People over Wind, Case C323/17 European Court of Justice, 12th April 2018.

¹¹ NRW. Available at <https://naturalresources.wales/guidance-and-advice/environmental-topics/wildlife-and-biodiversity/protected-areas-of-land-and-seas/find-protected-areas-of-land-and-sea/?lang=en> (Accessed April 2025).

¹² Defra. Available at <https://magic.defra.gov.uk/MagicMap.aspx> (Accessed April 2025).

¹³ JNCC. Available at <https://jncc.gov.uk/> (Accessed April 2025).

distance and the scale of the activities required by the Proposed Development, no pathway for effect is identified and impacts would not occur.

Understanding qualifying interests

- 3.5.2 For each of the European sites identified within the 10km search area, the qualifying features were established and the Conservation Objectives for each qualifying feature were obtained. Information was also sought to understand the potential vulnerability of the features to any effects that might arise from the Proposed Development.

Identification of the potential effects of the project

- 3.5.3 Any potential effects and pathways for effect on European sites resulting from the Proposed Development were identified prior to consideration of mitigation measures to be put in place specifically for the protection of that site. Embedded control measures (see section **Error! Reference source not found.**) have been considered as part of the Screening of potential impact pathways.
- 3.5.4 Effects on a European site can be both direct or indirect, short, medium or long term, temporary or permanent, continuous or intermittent, positive, neutral or negative and reversible or irreversible.

Identification of plans or projects considered for in-combination effects

- 3.5.5 An 'in-combination' assessment is required where a project may have an effect on a European site which is not significant but could act in-combination with another plan or project where the combined effects may become significant.
- 3.5.6 The Isle of Anglesey County Council¹⁴ and Gwynedd Council¹⁵ planning portals were used to search for planning applications within 1km of the Proposed Development, submitted within the last 6 months. Only planning applications with potential to have likely significant environmental impacts were considered below, and as such, the following types of applications are not considered:
- Withdrawn applications;
 - refused applications;
 - applications relating to small scale tree removals/surgery;
 - approvals of details reserved by conditions;
 - changes of use (that does not require facilitatory development);
 - listed building applications; and
 - non-material amendment type applications.

Consideration of the significance of potential effects

- 3.5.7 Potential effects were assessed in the absence of mitigation, using professional ecological judgement informed by the best available data and the Conservation Objectives for each site.

¹⁴ <https://www.anglesey.gov.wales/en/Residents/Planning-building-control-and-conservation/Planning/View-planning-and-building-control-applications.aspx>

¹⁵ <https://www.gwynedd.llyw.cymru/en/Residents/Planning-and-building-control/Planning/View-planning-applications-Track-and-Trace.aspx>

- 3.5.8 At the screening stage, assessment against specific Conservation Objectives is not required; rather, the question is whether it can be excluded, on the basis of objective information, that the proposal is likely to have a significant effect on a European. Professional judgement was applied with reference to:
- The vulnerability and sensitivity of qualifying features;
 - The phase and duration of potential effects (e.g. construction and/or operation);
 - The likely geographical extent of potential effects; and
 - The probability of effects occurring, based on comparable experience and evidence.
- 3.5.9 Where there was not enough information about the risk of qualifying interest being present, or of the risk of effects, the assessment used the precautionary principle to inform the judgement. The precautionary principle has been applied to ensure that any assessment errs on the side of caution, without being overly cautious. This principle means that the Conservation Objectives should prevail where there is uncertainty or that harmful effects will be assumed in the absence of evidence to the contrary.
- 3.5.10 This approach ensures that conclusions are based on the best available evidence and consistent with the legal interpretation of Article 6(3) of the Habitats Directive as set out in Waddenzee (C-127/02).

Limitations

- 3.5.11 This HRA Screening has been undertaken using the best available information at the time of assessment. Should design or data change, the screening should be revisited to confirm conclusions remain valid.
- 3.5.12 Information obtained from third-party and publicly available sources is considered accurate and up to date at the time of publication. However, due to the dynamic nature of the environment, local conditions and datasets may change between completion of this report and the construction or operation of the proposed development.
- 3.5.13 The assessment is therefore subject to limitations inherent in the age, resolution, coverage, and availability of source data. Designated site information is sourced primarily from NRW, JNCC datasets and MAGIC, which are periodically updated; users of this report should ensure they refer to the latest datasets at the time of decision-making.
- 3.5.14 The conclusions of this screening are based on the design information and scope defined in Section 2. Should the design, footprint or construction methods change materially, the assessment may need to be revisited to confirm that its conclusions remain valid.
- 3.5.15 Where uncertainty remains, professional ecological judgement has been applied in accordance with recognised guidance and the precautionary principle. Any such uncertainties that could influence the conclusions have been identified and acknowledged where relevant within this report.

4. Stage 1 – Screening assessment: identification of likely significant effects

4.1 Relevant Environmental baseline

Identification of European sites

4.1.1 The desk study highlighted six European sites within 10km of the Site. Distances and directions are measured from the closest point of the Site, and locations can be viewed in Figure 1. A summary of the European sites can be viewed below:

Table 1 European sites within 10km of the Site

Designated site	Site features	Distance and orientation from Site
Y Fenai a Bae Conwy/ Menai Strait and Conwy Bay Special area of Conservation (SAC)	<p>This site is a designated marine conservation area recognised for its diverse and ecologically significant habitats. The site encompasses a variety of marine and coastal environments, including estuaries, large shallow inlets and bays, reefs, sandbanks, mudflats, and coastal lagoons. These habitats support a wide range of flora and fauna, some of which are unique to this region.</p> <p>Annex I habitats, which are a primary reason for its designation include:</p> <ul style="list-style-type: none"> - Sandbanks which are slightly covered by sea water all the time - Mudflats and sandflats not covered by seawater at low tide - Reefs <p>Annex I habitats present as a qualifying feature, but not a primary reason for selection of this site include:</p> <ul style="list-style-type: none"> - Large shallow inlets and bays - Submerged or partially submerged sea caves 	Approximately 200m East of the Site.
Traeth Lafan / Lavan Sands, Conway Bay Special Protection Area (SPA)	<p>This large area of intertidal sand and mudflats lies at the eastern edge of the Menai Strait. The site is of importance for wintering waterbirds, especially oystercatcher (<i>Haematopus ostralegus</i>) and curlew (<i>Numenius Arquata</i>). The site is also an important moulting roost for great-crested grebe (<i>Podiceps cristatus</i>) in late summer / early autumn. The SPA contains a range of intertidal habitats from sheltered mudflats traversed by freshwater streams, to saltmarsh and exposed sand banks. These habitats support large numbers of invertebrates which provide rich feeding grounds for the birds, making this one of the most important sites in Wales for waders and wildfowl.</p> <p>This SPA is also notified as a site of special scientific interest (SSSI) and is overlapped by the Menai Strait and Conway Bay special area of conservation (SAC). The following SSSI features are a component part:</p> <ul style="list-style-type: none"> - Dwarf eel Grass (<i>Zostera noltei</i>) - Moderately exposed sand - Rockpools (pools and depressions in the mussel bed supporting hydroids or sea firs) - Oystercatcher (<i>Haematopus ostralegus</i>) - Curlew (<i>Numenius arquata</i>) - Redshank (<i>Tringa totanus</i>) - Red-breasted merganser (<i>Mergus serrator</i>) 	Approximately 3km North East of the Site at the closest point.

	<ul style="list-style-type: none"> - Great crested grebe (<i>Podiceps cristatus</i>) - Running water - Saltmarsh 	
Eryri / Snowdonia SAC	<p>The site is renowned for its extensive upland habitats, which include mountainous heathland and grassland. These habitats are vital for supporting a diverse range of flora and fauna, including several rare and protected species. Snowdonia is of particular importance for its natural beauty, ecological value, and its role in safeguarding key habitats and species for conservation in the region.</p> <p>Annex I habitats, which are a primary reason for its designation include:</p> <ul style="list-style-type: none"> - Oligotrophic to mesotrophic standing waters with vegetation of the <i>Littorelletea uniflorae</i> and/or of the <i>Isoëto-Nanojuncetea</i> - Siliceous alpine and boreal grasslands - Hydrophilous tall herb fringe communities of plains and of the montane to alpine levels - Siliceous scree of the montane to snow levels (<i>Androsacetalia alpinae</i> and <i>Galeopsietalia ladani</i>) - Calcareous rocky slopes with chasmophytic vegetation - Siliceous rocky slopes with chasmophytic vegetation <p>Annex I habitats present as a qualifying feature, but not a primary reason for selection of this site include:</p> <ul style="list-style-type: none"> - Northern Atlantic wet heaths with <i>Erica tetralix</i> - European dry heaths - Alpine and Boreal heaths - Alpine and subalpine calcareous grasslands - Species-rich <i>Nardus</i> grasslands, on silicious substrates in mountain areas (and submountain areas in Continental Europe) - Blanket bogs - Depressions on peat substrates of the Rhynchosporion - Petrifying springs with tufa formation (Cratoneurion) - 7230 Alkaline fens - 7240 Alpine pioneer formations of the <i>Caricion bicoloris-atrofuscae</i> - 91A0 Old sessile oak woods with <i>Ilex</i> and <i>Blechnum</i> in the British Isles <p>Annex II species that are a primary reason for selection of this site:</p> <ul style="list-style-type: none"> - Slender green feather-moss <i>Drepanocladus (Hamatocaulis) vernicosus</i> - Floating water-plantain 	Approximately 6.3km South East of the Site at the closest point.
Corsydd Mon/ Angelsey Fens SAC	<p>The site covers an area of approximately 465 hectares and was designated to protect a nationally important complex of calcareous and alkaline fen habitats, which are among the best examples of their type in the UK.</p> <p>The SAC has been designated for the following Annex I habitats, which are the primary reasons for site selection:</p> <ul style="list-style-type: none"> - Hard oligo-mesotrophic waters with benthic vegetation of <i>Chara</i> spp. - Calcareous fens with <i>Cladium mariscus</i> and species of the <i>Caricion davallianae</i> - Alkaline fens <p>Annex I habitats present as a qualifying feature, but not a primary reason for selection of this site:</p> <ul style="list-style-type: none"> - Northern Atlantic wet heaths with <i>Erica tetralix</i> - <i>Molinia</i> meadows on calcareous, peaty or clayey-silt-laden soils (<i>Molinion caeruleae</i>) 	Approximately 7.3km North West of the Site

	<p>Annex II species that are a primary reason for selection of this site:</p> <ul style="list-style-type: none"> - Geyer's whorl snail <i>Vertigo geyeri</i> <p>Annex II species present as a qualifying feature, but not a primary reason for site selection</p> <ul style="list-style-type: none"> - Southern damselfly <i>Coenagrion mercurial</i> <p>Marsh fritillary butterfly <i>Euphydryas (Eurodryas, Hypodryas) aurinia</i></p>	
Anglesey Terns / Morwenoliaid Ynys Môn SPA	The site qualifies under Article 4.1 of the Birds Directive by regularly supporting more than 1% of the GB population of four species of seabird: common tern (<i>Sterna Hirundo</i>), Arctic tern (<i>Sterna paradisica</i>), roseate tern (<i>Sterna dougalli</i>), and sandwich tern (<i>Thalasseus sandvicensis</i>). All of which are also Annex 1 breeding bird species.	Approximately 8km North West of the Site.
Liverpool Bay / Bae Lerpwl SPA	This site borders the coastlines of north-west England and north Wales, and runs as a broad arc from Morecambe Bay to the east coast of Anglesey. It is classified for the protection of red-throated diver (<i>Gavia stellata</i>), common scoter (<i>Melanitta nigra</i>), and little gull (<i>Hydrocoloeus minutus</i>) in the non-breeding season; common tern and little tern (<i>Sternula albifrons</i>) in the breeding season, and an internationally important waterbird assemblage.	Approximately 9.6 km North East of the Site.

Relevant Site Baseline

Desk Study

- 4.1.2 The Site falls within Glannau Porthaethwy Site of Special Scientific Interest (SSSI). This site extends along 4 km of the shore of Menai Bridge in the Menai Strait from Britannia Bridge to Craig y Don and has been selected for its marine biological features. This south-east facing shore is sheltered from wave-action and consists of a mixture of mud, bedrock, pebbles, cobbles and boulders. The shores of the islands of Ynys Gorad Goch, Ynys Welltog, Ynys Benlas, Ynys Tysilio, Half Tide Rock, Ynys Faelog, Ynys Tobig, Ynys Gaint, Ynys Castell and Ynys y Big are also included in the site. The shore is of special interest as it is the most extensive sheltered rock shore in the area between Bardsey Island and Great Orme's Head and because it supports the greatest diversity of marine plant and animal communities on this type of shore within this area.
- 4.1.3 DataMap Wales shows records of the following habitats listed under Environment (Wales) Act Section 7 and OSPAR: Marine Habitats¹⁶, within and around the works area:
- Tide swept channels- adjacent to site.
 - Sheltered muddy gravels- adjacent to site (end of outfall).
- 4.1.4 DataMap Wales shows records of the following Marine Article 17 Habitats Features¹⁷ within the works area:
- Intertidal mudflats- on Site

¹⁶ [Environment \(Wales\) Act Section 7 and OSPAR: Marine Habitats | DataMapWales](#)

¹⁷ [Marine Article 17 Habitats Features | DataMapWales](#)

- 4.1.5 The following Shellfish Waters Protected Areas (SWPAs)¹⁸ were identified via DataMap Wales:
- Menai Strait (East)- on Site.
- 4.1.6 No Marine Invasive Non-Native Species (INNS) records were identified within or immediately surrounding the Site on the Wales INNS Portal¹⁹.

Intertidal Biotope Survey

- 4.1.7 An Intertidal Biotope Survey was undertaken by experienced Arup marine ecologists Gareth McIlquham (Chartered Environmentalist) and Bethan Follis (Registered Environmental Practitioner) on 26th March 2026. The survey exceeded the estimated extent of the Site (approximate buffer of 100m) to account for potential important and/or sensitive features that may experience indirect effects from the Proposed Development.
- 4.1.8 The survey was undertaken with reference to the Marine Nature Conservation Review (MNCR) Intermediate Level survey for rapid biotope assessment²⁰ comprising broad biotope appraisal and identification of conspicuous flora and fauna. The survey was timed to target low water to maximise the extent of accessible intertidal habitat. The Intertidal Biotope Survey was undertaken either side of low water to maximise lower shore access; tides occurred as follows:
- Thursday 26th March 2026 - low water 10:35 (1.99m Above Chart Datum).
- 4.1.9 The upper shore of the survey area was characterised predominantly by exposed, barren rocks and shingle. Barren rocks and shingle dominated much of the upper shore, interspersed with occasional drift material and patches of lichens. These surfaces were largely devoid of macroalgae, except in sheltered pockets. The rocky outcrop (approximate grid reference SH 55947 72238) displayed a distinct lichen *Xanthoria parietina* and *Pelvetia canaliculata* band. Scattered plants were observed growing on the high ground amongst a layer of green algal coverage. The causeway was also characterised by a layer of green algae.
- 4.1.10 The mid shore supported a range of brown macroalgae and gastropods. Communities of brown seaweeds, such as *Ulva sp.* [C], *Fucus vesiculosus* [A] and *Ascophyllum nodosum* [A] were abundant along the mid shore. Gastropods such as *Littorina obtusata* [O], *Littorina littorea* [C], *Patella vulgata* [O], *Steromphala umbilicalis* [O], *Phorcus lineatus* [O], and *Nucella lapillus* [O] were found throughout the mid shore. Shore crabs (*Carcinus maenas*) were also observed [O].

Lower shore

- 4.1.11 The lower shore largely transitioned into softer substrates, with mud flats and areas of accumulated debris. Numerous casts from polychaete worms (likely *Arenicola marina* or similar species) were evident, forming small mounds across the muddy substrate. The lower shore was also marked by significant debris, including both natural and anthropogenic materials. Macroalgae was observed where the mud transitioned into rockier substrates, with brown algae species *Fucus Serratus* [A] widespread and red algae species including *Chondrus crispus* [O] present in patches. Extensive mud flats were observed, supporting a range of infaunal species and offering foraging grounds for birds. Signs of sewage

¹⁸ [Shellfish Waters Protected Area \(SWPA\) | DataMap Wales](#)

¹⁹ [*:* | Search | NBN Atlas Wales INNS](#)

²⁰ <https://mhc.jnce.gov.uk/>

contamination were noted, including discoloured water and sediments and odour, which may impact local biodiversity and water quality.

4.1.12 Intertidal Biotopes identified during the survey included:

4.1.13 On Site:

- LS.LCS.Sh.BarSh - Barren littoral shingle- upper shore.
- LR.LLR.F.Asc.X- *Ascophyllum nodosum* and *Fucus vesiculosus* on variable salinity mid eulittoral rock- mid shore.
- LR.R- Littoral rock- causeway (artificial).
- LR.HLR.FR- adjacent to causeway.

4.1.14 Adjacent to Site:

- LR.FLR.Lic.Ver.Ver- *Verrucaria spp.* on exposed upper littoral fringe rock- rocky outcrop.
- LR.LLR.F.Pel- *Pelvetia canaliculata* on sheltered upper littoral fringe rock- rocky outcrop.
- LR.LLR.F.Fspi.X- *Fucus spiralis* on full salinity upper eulittoral mixed substrata- - rocky outcrop.
- LS.LSa.MuSa.HedMacEte- *Hediste diversicolor* and/or *Macoma balthica* in estuarine intertidal muddy sand- large extents of intertidal area
- LR.LLR.F.Asc.FS- *Ascophyllum nodosum* with *Fucus serratus* on very sheltered mid eulittoral rock- lower shore.

4.1.15 The Marine Invasive Non-Native Species (INNS) *Sargassum muticum* (Japanese wireweed) was noted during the survey, approximate grid reference SH 56008 72256. The Marine Invasive Non-native Species Priority Monitoring and Surveillance List for Wales²¹ states that *S.muticum* has “Unproven impact on biodiversity but will change community structure and dominance, having a visual impact where it forms dense beds. It is potentially a nuisance species” and assigns *S.muticum* a risk assessment score of Medium.

4.2 Potential impact pathways

4.2.1 There will be no works **within** any European site and therefore there is no impact pathway for direct permanent or temporary loss of any qualifying habitats during the construction or operation stages of the Proposed Development.

4.2.2 All works forming part of the Proposed Development will take place outside of European sites. Any impacts on habitats resulting from the Proposed Development will be temporary in nature and will not result in permanent loss of habitats supporting qualifying features of the SAC.

4.2.3 The potential impact pathways that could result from the Proposed Development are identified in Table 4-1.

Table 4-1: Potential impact pathways that could result from the Proposed Development

Potential impact pathway	Pathway description
Air quality impacts	Emissions produced during construction from vehicular movements have the potential to cause changes in air quality through the release of pollutants.
Water Pollution	Y Fenai a Bae Conwy/ Menai Strait and Conwy Bay SAC is located approximately 200m from the Proposed Development and is therefore hydrologically linked through surface water runoff and tidal regimes and is susceptible to pollution incidents. There is the potential for construction activities to result in a pollution incidents e.g. oil/chemical pollution

²¹ [invasive-aquatic-species-priority-marine-species.pdf](#)

Potential impact pathway	Pathway description
	through spills leading to habitat degradation through changes in water quality and sedimentation whilst working near the waterbody . Furthermore, there is also the potential for indirect effects to qualifying species which are supported by habitats sensitive to changes in water quality.
Harm, disturbance or displacement of qualifying species	<p>While no works will occur within any European site and no direct mortality or injury will occur, the potential for disturbance of qualifying species using adjacent habitats could occur as a result of light, noise and vibration during construction. Y Fenai a Bae Conwy/ Menai Strait and Conwy Bay SAC is located approximately 200m east of the Site, however, this SAC is designated largely for its qualifying habitats rather than species.</p> <p>The Site is adjacent to busy areas, public roads and residential properties, therefore is already subject to moderate noise levels and human disturbance. Additionally, the Proposed Development is minor in scale and will take place over short timescales. The Proposed Development is therefore not expected to cause a significant increase in disturbance to bird species associated with Traeth Lafan / Lavan Sands, Anglesey Terns / Morwenoliaid Ynys Môn or Liverpool Bay / Bae Lerpwl SPAs.</p> <p>There is therefore not considered to be an impact pathway for direct harm or displacement of qualifying species.</p> <p>There is potential for sediment disturbance to occur from scaffolding and plant within the intertidal areas, this has the potential to disturb intertidal sediment, which could move sediment and/ or locked pollution into the SAC, potentially indirectly impacting qualifying species.</p>
Spread of INNS	INNS could be spread from the Site or adjoining habitats via construction machinery, or on construction workers' footwear.

4.3 Screening assessment

- 4.3.1 Screening for each relevant European site identified in section **Error! Reference source not found.** against the potential pathways identified in Table 4-1: Potential impact pathways that could result from the Proposed Development has been carried out. A justification and context for each conclusion is provided in the following paragraphs.
- 4.3.2 Potential impact pathways (as outline above) have been identified to the following European Sites which meet the screening criteria outlined in section 3:
- Y Fenai a Bae Conwy/ Menai Strait and Conwy Bay SAC
- 4.3.3 The following European sites and features were screened out of further assessment on the basis that there is no plausible impact pathway linking the proposed development to their qualifying features:
- Eryri / Snowdonia SAC
 - Corsydd Mon/ Anglesey Fens SAC
 - Traeth Lafan / Lavan Sands, Conway Bay Special Protection Area (SPA)
 - Anglesey Terns / Morwenoliaid Ynys Môn SPA
 - Liverpool Bay / Bae Lerpwl SPA
- 4.3.4 The qualifying features, status, Conservation Objectives and vulnerabilities of Y Fenai a Bae Conwy/ Menai Strait and Conwy Bay SAC are provided in Appendix A.2, and the results of the Stage 1 Screening are summarised in Table 4-2.

Air Quality Impacts

- 4.3.5 The Proposed Development is located over 3km from Traeth Lafan / Lavan Sands, Conway Bay SPA, Eryri / Snowdonia SAC, Corsydd Mon/ Angelsey Fens SAC, Anglesey Terns / Morwenoliaid Ynys Môn SPA and Liverpool Bay / Bae Lerpwl SPA. Considering the scope and the temporal scale of the works proposed, it is considered that any changes in air quality during construction and operation would be negligible at these distances and would not result in any likely significant effects to qualifying habitats of these European sites and their respective conservation objectives.

Y Fenai a Bae Conwy/ Menai Strait and Conwy Bay SAC

- 4.3.6 Y Fenai a Bae Conwy/ Menai Strait and Conwy Bay SAC is located approximately 200m east of the Proposed Development. However, none of the qualifying features identify air quality as a threat to condition²².
- 4.3.7 Given the small scale of the Proposed Development, emissions from vehicles and construction work will be minimal, and will be managed and controlled with standard good practice measures which will be set out in the outline CEMP; therefore, no likely significant effects to Y Fenai a Bae Conwy/ Menai Strait and Conwy Bay SAC from construction are anticipated.
- 4.3.8 During operation of the Proposed Development, the Site will return to pre-construction conditions. Therefore, there is no potential for changes in air quality to result in likely significant effects during operation.
- 4.3.9 In conclusion, when considering the minimal scope and size of the Proposed Development, no likely significant effects from changes in air quality are anticipated on Y Fenai a Bae Conwy/ Menai Strait and Conwy Bay SAC.

Water Pollution

- 4.3.10 There is not anticipated to be an impact pathway from water pollution to the Traeth Lafan / Lavan Sands, Conway Bay Special Protection Area (SPA) Eryri / Snowdonia SAC, Corsydd Mon/ Angelsey Fens SAC, Anglesey Terns / Morwenoliaid Ynys Môn SPA, or Liverpool Bay / Bae Lerpwl SPA owing to either a lack of hydrological connection or the significant dilution that would occur before any pollution event reaches these European sites.

Y Fenai a Bae Conwy/ Menai Strait and Conwy Bay SAC

- 4.3.11 Y Fenai a Bae Conwy/ Menai Strait and Conwy Bay SAC is located approximately 200m east of the Proposed Development. Several qualifying features of the site identify Water quality as a threat to condition, listed below:
- Mudflats and sandflats not covered by seawater at low tide (approximately 200m east of the Site)
 - Reefs (approx. 200m east of the Site)
 - Sandbanks which are slightly covered by sea water all the time (6km north east of the Site)
 - Large shallow inlets and bays (2km north east of the Site)

²² NRW (2025). NRW Evidence Report 910: Condition Assessments for the Designated Features of Ardal Cadwraeth Arbennig Y Fenai a Bae Conwy / Menai Strait and Conwy Bay Special Area of Conservation. Available at <https://cdn.cyfoethnaturiol.cymru/ygfl0bib/condition-assessment-for-menai-strait-and-conwy-bay-sac.pdf> [Accessed April 2026]

- 4.3.12 Following the latest condition assessment for the SAC, published in June 2025, one qualifying habitat that is present within the vicinity of the Site were found to be in unfavourable condition- Reefs, found approximately 200m east of the Site. Y Fenai a Bae Conwy/ Menai Strait and Conwy Bay SAC is therefore considered to be highly sensitive to water pollution.
- 4.3.13 There is potential for runoff and contamination generated during construction to enter the Y Fenai a Bae Conwy/ Menai Strait and Conwy Bay SAC. Pollution events may occur directly from spillages of polluting substances into waterbodies, for example during refuelling, or indirectly by being conveyed in runoff from hard standing, other sealed surfaces or from construction machinery. In addition, construction activities such as site preparation and excavations will result in the disturbance of soil. Temporary scaffolding set up within the intertidal area could potentially result in sediment disturbance and unlocking of pollution that could move into the SAC. There is also potential for increased risk of pollution/sewage spills via jet-vaccing of pipe and over pumping of sewage network during the works. Areas of exposed soil are susceptible to erosion during rainfall events, partly due to loosening of soil and increased runoff rates. Surface runoff from such areas can be heavily laden with sediment, which could be transported to surface watercourses and waterbodies.
- 4.3.14 A number of construction phase best practice mitigation measures, including standard pollution prevention measures, will be secured through the CEMP. The contractor will ensure that site personnel are fully aware of the potential impact to water resources associated with the construction works and procedures to be followed in the event of an accidental pollution event occurring. Following the implementation of the measures outlined in section 2.4, there is not anticipated to be any potential for likely significant effects on the Y Fenai a Bae Conwy/ Menai Strait and Conwy Bay SAC from water pollution during construction.
- 4.3.15 During operation, the Site will return to pre-construction conditions, with potentially beneficial effects to water quality through reduced leakage of sewage infrastructure. As such, given the scale of the works and the embedded mitigation, it is reasonable to conclude that likely significant effects on the Y Fenai a Bae Conwy/ Menai Strait and Conwy Bay SAC during operation can be ruled out.

Harm, disturbance or displacement of qualifying species

- 4.3.16 All construction and operational activities will take place outside of any European sites. There is therefore not considered to be an impact pathway for direct harm or displacement of qualifying species. Y Fenai a Bae Conwy/ Menai Strait and Conwy Bay SAC is located approximately 200m east of the Site, however, this SAC is designated largely for its qualifying habitats rather than species.
- 4.3.17 There is potential for sediment disturbance to occur from temporary scaffolding and plant within the intertidal areas, this has the potential to disturb intertidal sediment, which could move sediment and/ or locked pollution into the SAC, potentially indirectly impacting qualifying species. A number of construction phase best practice mitigation measures, including standard pollution prevention measures, will be secured through the CEMP. Work will be undertaken at low tides, and no equipment will be situated below MHWS at least one hour either side of high tide. It can therefore be concluded that there is no potential for likely significant effects on any European site to arise from harm, disturbance or displacement of qualifying species
- 4.3.18 The Site is adjacent to busy areas, public roads and residential properties, therefore is already subject to moderate noise levels and human disturbance. Additionally, the Proposed Development is minor in scale and will take place over short timescales. The Proposed Development is therefore not expected to cause a significant increase in disturbance to bird

species associated with Traeth Lafan / Lavan Sands, Anglesey Terns / Morwenoliaid Ynys Môn or Liverpool Bay / Bae Lerpwl SPAs. There is therefore not considered to be an impact pathway for direct harm or displacement of qualifying species. It can therefore be concluded that there is no potential for likely significant effects on any European site to arise from harm, disturbance or displacement of qualifying species

Spread of INNS

- 4.3.19 Y Fenai a Bae Conwy/ Menai Strait and Conwy Bay SAC is located approximately 200m east of the Proposed Development. Several qualifying features of the site INNS as a threat to condition, listed below:
- Mudflats and sandflats not covered by seawater at low tide (approximately 200m east of the Site)
 - Reefs (approximately 200m east of the Site)
 - Submerged or partially submerged sea caves (approximately 1.5km north east of the Site)
 - Sandbanks which are slightly covered by sea water all the time (6km north east of the Site)
 - Large shallow inlets and bays (2km north east of the Site)
- 4.3.20 Following the latest condition assessment for the SAC, published in June 2025, one qualifying habitat that is present within the vicinity of the Site were found to be in unfavourable condition- Reefs, found approximately 200m east of the Site. Y Fenai a Bae Conwy/ Menai Strait and Conwy Bay SAC is therefore considered to be sensitive to INNS.
- 4.3.21 Works will be undertaken within the intertidal zone below Mean High Water Springs (MHWS), and there is therefore potential for the Proposed Development to mobilise or spread marine INNS. *Sargassum muticum*, a Schedule 9 INNS listed under Wildlife and Countryside Act 1981 (as amended) was recorded in proximity to the Site (approximate OSGR SH 56008 72256) during the intertidal biotope survey. However, this is outside of the works area.
- 4.3.22 INNS could be spread from the Site or adjoining habitats via construction machinery, or on construction workers' footwear. There is also a risk that INNS could be mobilised whilst working in the intertidal area. Wheel washing measures will be implemented for plant entering and leaving site, in line with the CEMP.
- 4.3.23 Considering the embedded control measures for pollution prevention and biosecurity set out in the CEMP, it can be concluded that there is no potential for likely significant effects on any European site to arise from the spread of INNS.

In-Combination Assessment

- 4.3.24 Any in-combination assessment, as a requirement of the Habitat Regulations must consider the proposed works, not in isolation, but in relation to other projects and plans in-combination.
- 4.3.25 A search of Isle of Anglesey County Council and Gwynedd Council planning registers, undertaken in April 2026 has identified the project listed below for the assessment of likely significant cumulative effects on the environment.
- Planning application FPL/2024/228 (Isle of Anglesey County Council) – “Full application for the erection of an extra care facility and residential care home with community facilities, construction of a new vehicular access, highway improvement works, demolition of the existing dwelling on the site together with associated development on land near (Validation 02/13/2026). This application site is approximately 350m west of the Proposed Development.

4.3.26 Due to the small scale of the Proposed Development, it is not anticipated that there will be significant interactions with the above project. The assessment of the Proposed Development acting together with the above planning application has therefore concluded that there would be no in-combination effects that would be significant and lead to adverse effects on the integrity of European sites.

Summary of screening assessment

Table 4-2 Summary of likely significant effects from the Proposed Development.

European site / broad qualifying features Site	Pathway	Likely significant effect alone	Yes or no (alone)	Likely significant effect in combination	Yes or no (in combination)
Y Fenai a Bae Conwy/ Menai Strait and Conwy Bay SAC	Air Quality Impacts	Refer to section 4.3 for rationale	No	No effect alone therefore no effect in combination	No
	Water Pollution	Refer to section 4.3 for rationale	No	No effect alone therefore no effect in combination	No
	Harm, disturbance or displacement of qualifying species	Refer to section 4.3 for rationale	No	No effect alone therefore no effect in combination	No
	Spread of INNS	Refer to section 4.3 for rationale	No	No effect alone therefore no effect in combination	No
Traeth Lafan / Lavan Sands, Conway Bay SPA	Air Quality Impacts	Refer to section 4.3 for rationale	No	No effect alone therefore no effect in combination	No
	Water Pollution	Refer to section 4.3 for rationale	No	No effect alone therefore no effect in combination	No
	Harm, disturbance or displacement of qualifying species	Refer to section 4.3 for rationale	No	No effect alone therefore no effect in combination	No
	Spread of INNS	Refer to section 4.3 for rationale	No	No effect alone therefore no effect in combination	No
Eryri / Snowdonia SAC	Air Quality Impacts	Refer to section 4.3 for rationale	No	No effect alone therefore no effect in combination	No
	Water Pollution	Refer to section 4.3 for rationale	No	No effect alone therefore no effect in combination	No
	Harm, disturbance or displacement of qualifying species	Refer to section 4.3 for rationale	No	No effect alone therefore no effect in combination	No
	Spread of INNS	Refer to section 4.3 for rationale	No	No effect alone therefore no effect in combination	No
Corsydd Mon/ Anglesey Fens SAC	Air Quality Impacts	Refer to section 4.3 for rationale	No	No effect alone therefore no effect in combination	No
	Water Pollution	Refer to section 4.3 for rationale	No	No effect alone therefore no effect in combination	No
	Harm, disturbance or displacement of qualifying species	Refer to section 4.3 for rationale	No	No effect alone therefore no effect in combination	No
	Spread of INNS	Refer to section 4.3 for rationale	No	No effect alone therefore no effect in combination	No
Anglesey Terns / Morwenoliaid Ynys Môn SPA	Air Quality Impacts	Refer to section 4.3 for rationale	No	No effect alone therefore no effect in combination	No
	Water Pollution	Refer to section 4.3 for rationale	No	No effect alone therefore no effect in combination	No

European site / broad qualifying features Site	Pathway	Likely significant effect alone	Yes or no (alone)	Likely significant effect in combination	Yes or no (in combination)
	Harm, disturbance or displacement of qualifying species	Refer to section 4.3 for rationale	No	No effect alone therefore no effect in combination	No
	Spread of INNS	Refer to section 4.3 for rationale	No	No effect alone therefore no effect in combination	No
Liverpool Bay / Bae Lerpwl SPA	Air Quality Impacts	Refer to section 4.3 for rationale	No	No effect alone therefore no effect in combination	No
	Water Pollution	Refer to section 4.3 for rationale	No	No effect alone therefore no effect in combination	No
	Harm, disturbance or displacement of qualifying species	Refer to section 4.3 for rationale	No	No effect alone therefore no effect in combination	No
	Spread of INNS	Refer to section 4.3 for rationale	No	No effect alone therefore no effect in combination	No

4.4 Screening conclusions

4.4.1 DCWW are seeking to implement sewer realigning works at Treborth Menai Ville.

4.4.2 A Stage 1 Habitats Regulations Assessment has been undertaken to determine whether the Proposed Development has the potential to give rise to likely significant effects on any European site, either alone or in combination with other plans or projects.

4.4.3 Potential pathways for effect have been identified for the:

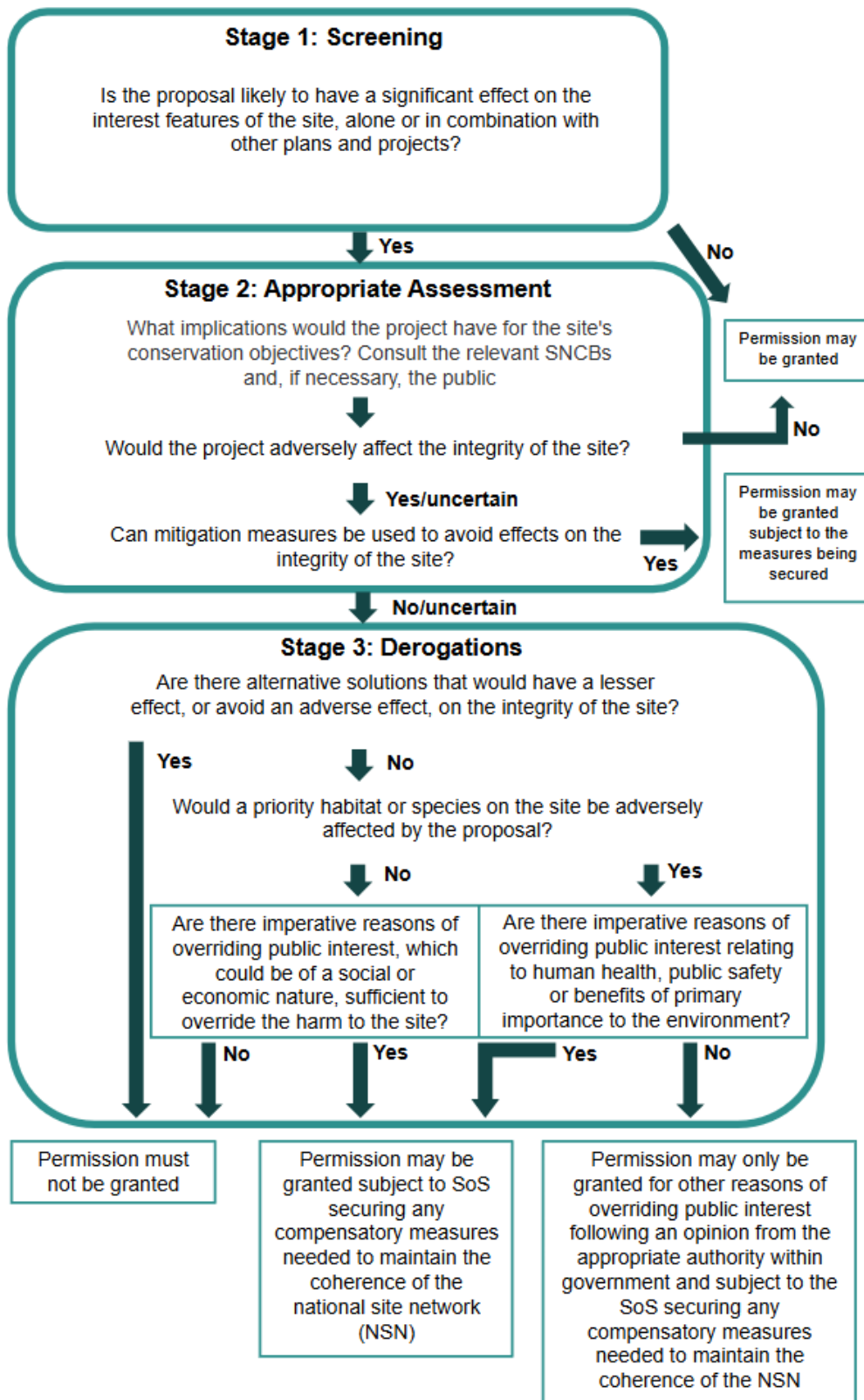
- Y Fenai a Bae Conwy/ Menai Strait and Conwy Bay SAC.

4.4.4 No likely significant effect has been identified alone therefore no effect is expected in combination. Based on the best available evidence and applying the precautionary principle, the Proposed Development will not result in likely significant effects on any European site, either alone or in combination with other plans or projects. An Appropriate Assessment (Stage 2) is not required.

Figures

Figure 1 International Sites
Figure 2 Site Layout

A.1 Habitats regulations assessment process



A.2 Features, conservation objectives and threats / vulnerabilities of Y Fenai a Bae Conwy/ Menai Strait and Conwy Bay Special area of Conservation

Table 4-3 Features, conservation objectives and threats / vulnerabilities of Y Fenai a Bae Conwy/ Menai Strait and Conwy Bay Special area of Conservation

Site Name: Y Fenai a Bae Conwy/ Menai Strait and Conwy Bay Special area of Conservation

JNCC Site Code: UK0030202

Area (Ha): 26501.64

Category for designation	Qualifying features of the site	Condition Assessment	Conservation Objectives	Threats to condition
Annex I habitats that are a primary reason	1110 Sandbanks which are slightly covered by sea water all the time	Unfavourable	<p>Objective 1: The overall distribution and extent of the sandbanks feature within the SAC is stable or increasing, subject to natural change.</p> <ul style="list-style-type: none"> 1a. Feature extent and distribution- Maintain the extent and distribution of each of the sandbanks that form the sandbanks feature. <p>Objective 2: The hydro-morphological and chemical elements necessary for the structure and function of the sandbanks feature are stable or improving, subject to natural change.</p> <ul style="list-style-type: none"> 2a. Water and sediment quality- Contaminants are at levels not detrimental to the structure and function of the sandbanks feature. Nutrients are at levels not detrimental to the structure and function of the sandbanks feature. Physicochemical characteristics are at levels not detrimental to the structure and function of sandbanks the feature. 2b. Hydro-morphology- The characteristic hydrodynamics, sediment transport and morphology necessary for the structure and function of the sandbanks feature are sustained. 2c. Sediment supply- The sediment type, size distribution and budget necessary for the structure and function of the sandbanks feature are sustained <p>Objective 3: The abundance, distribution and diversity of species within component habitats and communities necessary for the structure and function of the sandbanks feature are stable or improving, subject to natural variability.</p> <ul style="list-style-type: none"> 3a. Habitats and communities- Restore the abundance, distribution and diversity of species within habitats and communities necessary for the structure and function of the sandbanks feature. 3b. Invasive and non-native species- Introduction or spread of new non-native species to the SAC by anthropogenic activities should not have a detrimental impact on the structure and function of the sandbanks feature. 	<ul style="list-style-type: none"> INNS Water quality: contaminants Climate change

	1140 Mudflats and sandflats not covered by seawater at low tide	Favourable	<p>Objective 1: The overall distribution and extent of the mudflats and sandflats feature within the SAC and each of its main component habitats are stable or increasing, subject to natural change.</p> <ul style="list-style-type: none"> • 1a. Feature extent and distribution- Maintain the extent and distribution of mudflats and sandflats, subject to natural change. • 1b. Component habitat extent and distribution- Maintain the extent and distribution of component habitats and communities necessary for the structure and function of the mudflats and sandflats feature. <p>Objective 2: The hydro-morphological and chemical structure necessary for the function of the mudflats and sandflats feature are stable or improving, subject to natural change.</p> <ul style="list-style-type: none"> • 2a. Water and sediment quality- Contaminants are at levels not detrimental to the structure and function of the mudflats and sandflats feature. Nutrients are at levels not detrimental to the structure and function of the mudflats and sandflats feature. Physicochemical characteristics are at levels not detrimental to the structure and function of the mudflats and sandflats feature. • 2b. Hydro-morphology- The characteristic hydrodynamics, sediment transport and morphology necessary for the structure and function of the mudflats and sandflats feature are sustained. • 2c. Sediment supply- The sediment type, size distribution and budget necessary for the structure and function of the mudflats and sandflats feature is sustained. <p>Objective 3: The abundance, distribution and diversity of communities and component habitats necessary for the structure and function of the mudflats and sandflats feature are stable or improving, subject to natural variability.</p> <ul style="list-style-type: none"> • 3a. Habitats and communities- Maintain the abundance, distribution and diversity of species within component habitats and communities necessary for the structure and function of the mudflats and sandflats feature. • 3b. Invasive and non-native species- Introduction or spread of new non-native species to the SAC by anthropogenic activities should not have a detrimental impact on the structure and function of the mudflats and sandflats feature 	<ul style="list-style-type: none"> • Unconsented infrastructure • INNS • Water quality: contaminants • Management of coastal defences • Climate change
--	--	------------	--	---

	1170 Reefs	Unfavourable	<p>Objective 1: The overall distribution and extent of the reefs feature within the SAC and each of its main component habitats are stable or increasing, subject to natural change.</p> <ul style="list-style-type: none"> • 1a. Feature extent and distribution- Maintain the extent and distribution of the reefs feature and reef types, subject to natural change. • 1b. Component habitat extent and distribution- Maintain the extent and distribution of the component habitats and communities necessary for the structure and function of the reefs feature. <p>Objective 2: The hydro-morphological and chemical elements necessary for the structure and function of the reefs feature are stable or improving, subject to natural change.</p> <ul style="list-style-type: none"> • a. Water and sediment quality- Contaminants are at levels not detrimental to the structure and function of the reefs feature. Nutrients are at levels not detrimental to the structure and function of the reefs feature. Physicochemical characteristics are at levels not detrimental to the structure and function of the reefs feature. • 2b. Hydro-morphology- The characteristic hydrodynamics, sediment transport and morphology necessary for the structure and function of the reefs feature are sustained. • 2c. Sediment supply The sediment type, size distribution and budget necessary for the structure and function of the reefs feature is sustained <p>Objective 3: The abundance, distribution and diversity of species within component habitats and communities necessary for the structure and function of the reefs feature are stable or improving, subject to natural variability.</p> <ul style="list-style-type: none"> • 3a. Habitats and communities- Maintain the abundance, distribution and diversity of species within intertidal component habitats and communities necessary for the structure and function of the reefs feature. Restore the abundance, distribution and diversity of species within subtidal component habitats and communities necessary for the structure and function of the reefs feature. • 3b. Invasive and non-native species (INNS)- Introduction or spread of new non-native species to the SAC by anthropogenic activities should not have a detrimental impact on the structure and function of the reefs feature 	<ul style="list-style-type: none"> • Unconsented infrastructure • Recreational access and collection • INNS • Water quality: contaminants • Management of coastal defences • Climate change
--	------------	--------------	---	---

Annex I habitats present as a qualifying feature, but not a primary reason	1160 Large shallow inlets and bays	Unfavourable	<p>Objective 1: The overall distribution and extent of the large shallow inlets and bays feature within the SAC and each of its main component habitats are stable or increasing, subject to natural change.</p> <ul style="list-style-type: none"> • 1a. Feature extent and distribution- Maintain the extent and distribution of the large shallow inlets and bays feature, subject to natural change. • 1b. Component habitat extent and distribution- Maintain the extent and distribution of component habitats and communities necessary for the structure and function of the large shallow inlets and bays feature. <p>Objective 2: The hydro-morphological and chemical elements necessary for the structure and function of the large shallow inlets and bays feature are stable or improving, subject to natural change.</p> <ul style="list-style-type: none"> • 2a Water and sediment quality- Contaminants are at levels not detrimental to the structure and function of the large shallow inlets and bays feature. Nutrients are at levels not detrimental to the structure and function of the large shallow inlets and bays feature. Physicochemical characteristics of the water column and sediments are at levels not detrimental to the structure and function of the large shallow inlets and bays feature. • 2b. Hydro-morphology- The characteristic hydrodynamics, sediment transport and morphology necessary for the structure and function of the large shallow inlets and bays feature are sustained. • 2c. Sediment supply- The sediment type, size distribution and budget necessary for the structure and function of the large shallow inlets and bays feature is sustained. <p>Objective 3: The abundance, distribution and diversity of species within component habitats and communities necessary for the structure and function of the large shallow inlets and bays feature are stable or improving, subject to natural variability.</p> <ul style="list-style-type: none"> • 3a. Habitats and communities- Restore the abundance, distribution and diversity of species within component habitats and communities necessary for the structure and function of the large shallow inlets and bays feature • 3b. Invasive and no-native species- Introduction or spread of new non-native species to the SAC by anthropogenic activities should not have a detrimental impact on the structure and function of the large shallow inlets and bays feature. 	<ul style="list-style-type: none"> • Unconsented infrastructure • INNS • Water quality: contaminants • Management of coastal defences • Climate change • Recreational access and collection
--	------------------------------------	--------------	---	---

	8330 Submerged or partially submerged sea caves	Unknown	<p>Objective 1: The overall distribution and extent of the sea caves feature within the SAC are stable subject to natural change.</p> <ul style="list-style-type: none"> • 1a. Feature extent and distribution- Maintain the extent and distribution of sea caves, subject to natural change. <p>Objective 2: The hydro-morphological and chemical elements necessary for the structure and function of the sea caves feature are stable or improving, subject to natural change</p> <ul style="list-style-type: none"> • 2a. Water and sediment quality- Contaminants are at levels not detrimental to the structure and function of the sea caves feature. Nutrient concentrations are at levels not detrimental to the structure and function of the sea caves feature. Physio-chemical characteristics of the water column and sediments are at levels not detrimental to the structure and function of the sea caves feature. • 2b. Hydro-morphology- Ensure the characteristic hydrodynamics, sediment transport and morphology necessary for the structure and function of the sea caves feature are sustained. • 2c. Sediment supply- The sediment type, size distribution and budget necessary for the structure and function of the sea caves feature are sustained. <p>Objective 3: The abundance, distribution and diversity of communities and habitats necessary for the structure and function of the feature are stable or improving, subject to natural variability.</p> <ul style="list-style-type: none"> • 3a. Habitats and communities- Maintain the abundance, distribution and diversity of species within component habitats and communities necessary for the structure and function of the sea caves feature. • 3b. Invasive and non-native species- Introduction or spread of new non-native species to the SAC by anthropogenic activities should not have a detrimental impact on the structure and function of the sea caves feature. 	<ul style="list-style-type: none"> • Marine Litter • INNS • Recreation • Climate change • Management of coastal defences • Metal mines
--	--	---------	--	--

