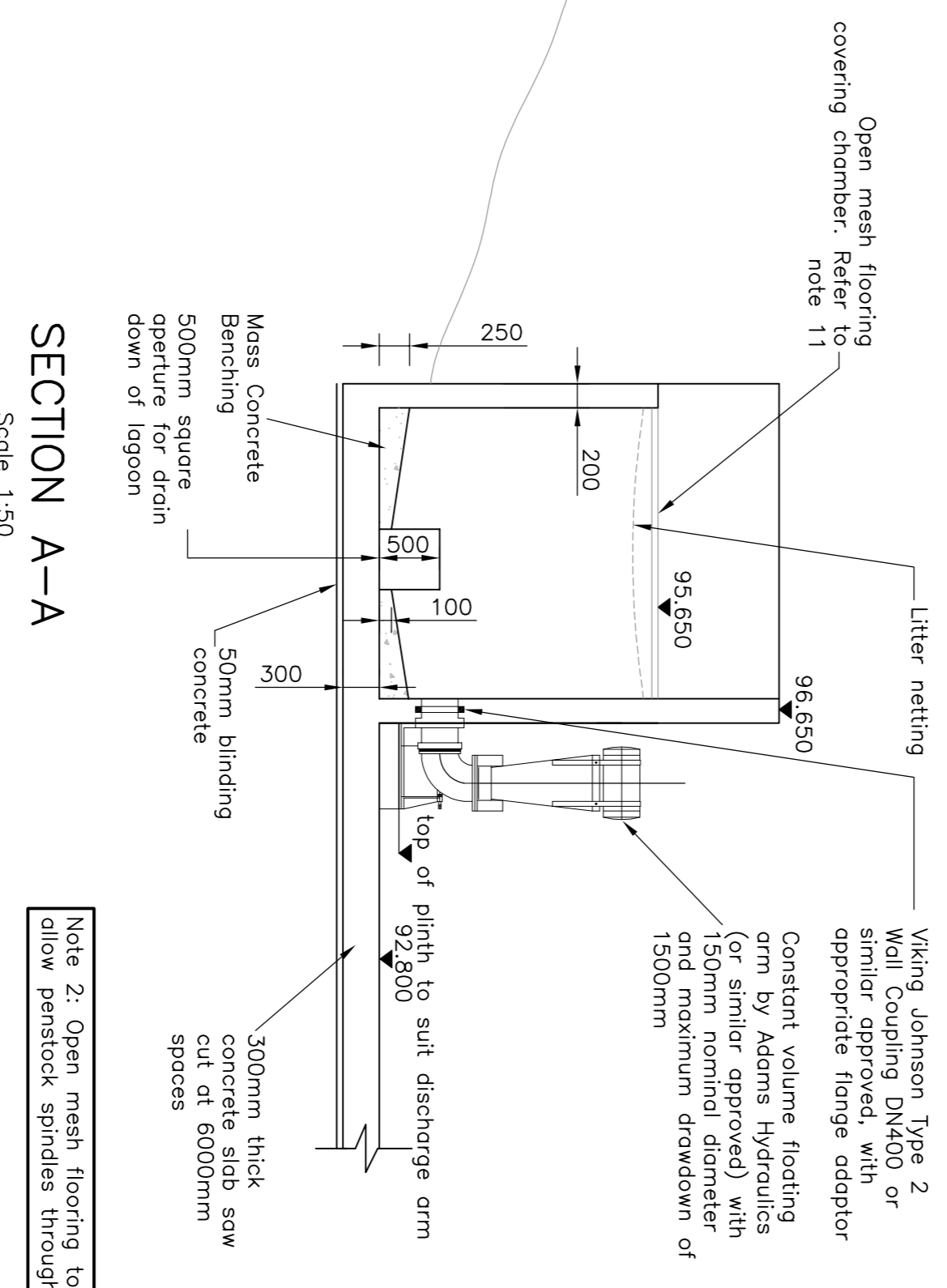
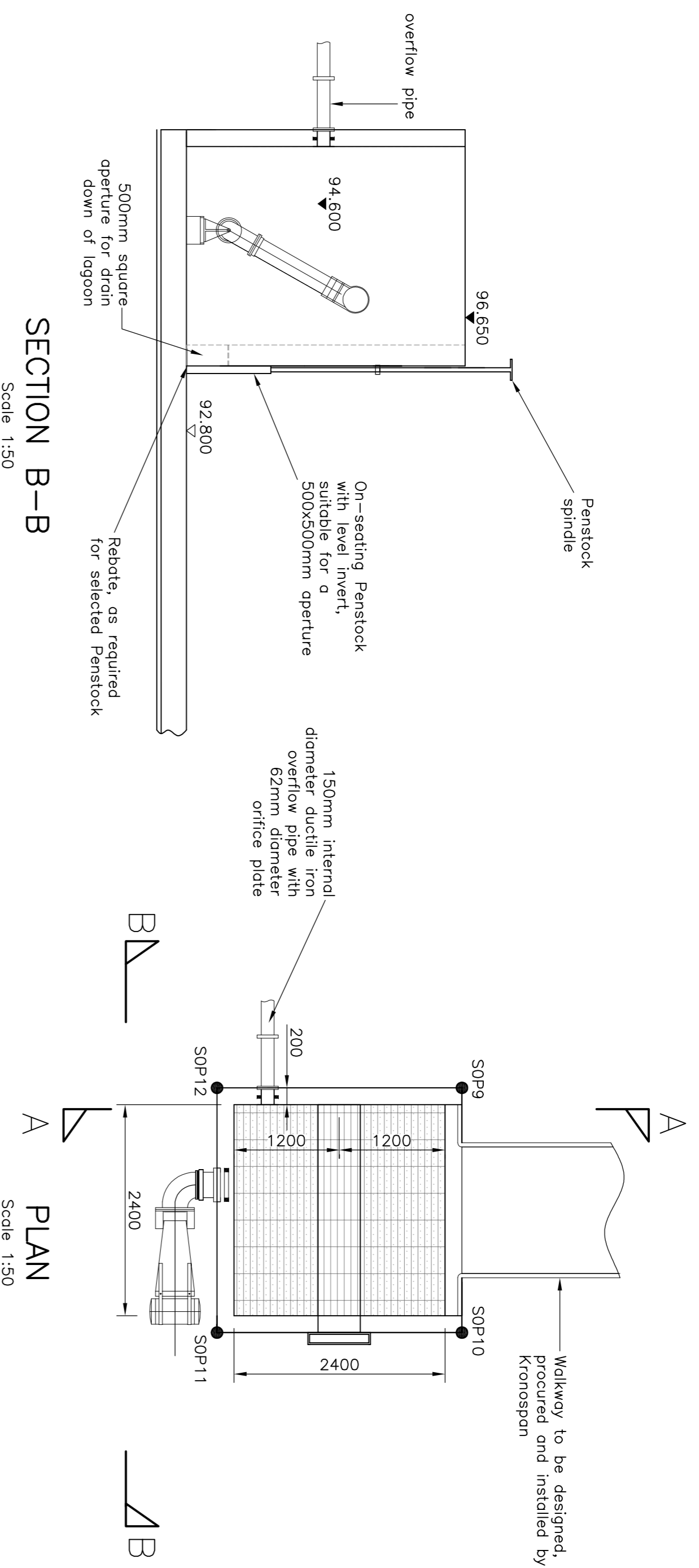


OUTFALL CHAMBER	
SOP9	E=328636,3796, N=338941,1309
SOP10	E=328639,1759, N=338940,3137
SOP11	E=328638,3935, N=338937,5664
SOP12	E=328635,5792, N=338938,3911



- NOTES**
- All levels are in metres above ordnance datum.
 - This drawing should only be read in relation to subject of the title. Other information shown on drawings as to be used should be read to appropriate drawing series for other information.
 - Do not scale from this drawing.
 - It is the responsibility of the Contractor to check the validity of primary setting out control of stations prior to carrying out work on site.
 - All dimensions are in millimeters unless otherwise stated.
 - Open mesh cover on chamber to be 'Cooper Clarke' open mesh beam multiple for clear opening of 2.4m x 2.4m, or similar approved. Load classification to conform with B125 in BS EN 124, or greater. All mild steel fixtures & fittings to be galvanised BSEN ISO 1461:2009. Open mesh flooring to be in accordance with BS 4992 part 1, 2006.
 - For details of lagoon outfall chamber, refer to drawing 16147/H/502/06.
 - For details of penstocks refer to Appendix 5/1 - Drainage Specification.
 - All metalwork to be hot dip galvanised to BS EN ISO 1461.
 - Walkway to be designed, supplied and installed by Kronospan.
 - Pumps and rising main to be designed, supplied and installed by Kronospan.

Kronospan Approved	
Date	Rev.
AS SHOWN	1

Client	Project	Drawing Title
	THE RAIL SIDING PROJECT	PROPOSED FLOATING DISCHARGE ARM DETAILS
20 Nibleholme Street, Chester, CH1 2HX Tel: 01244 311955 Fax: 01244 314680 www.kronospan.co.uk		