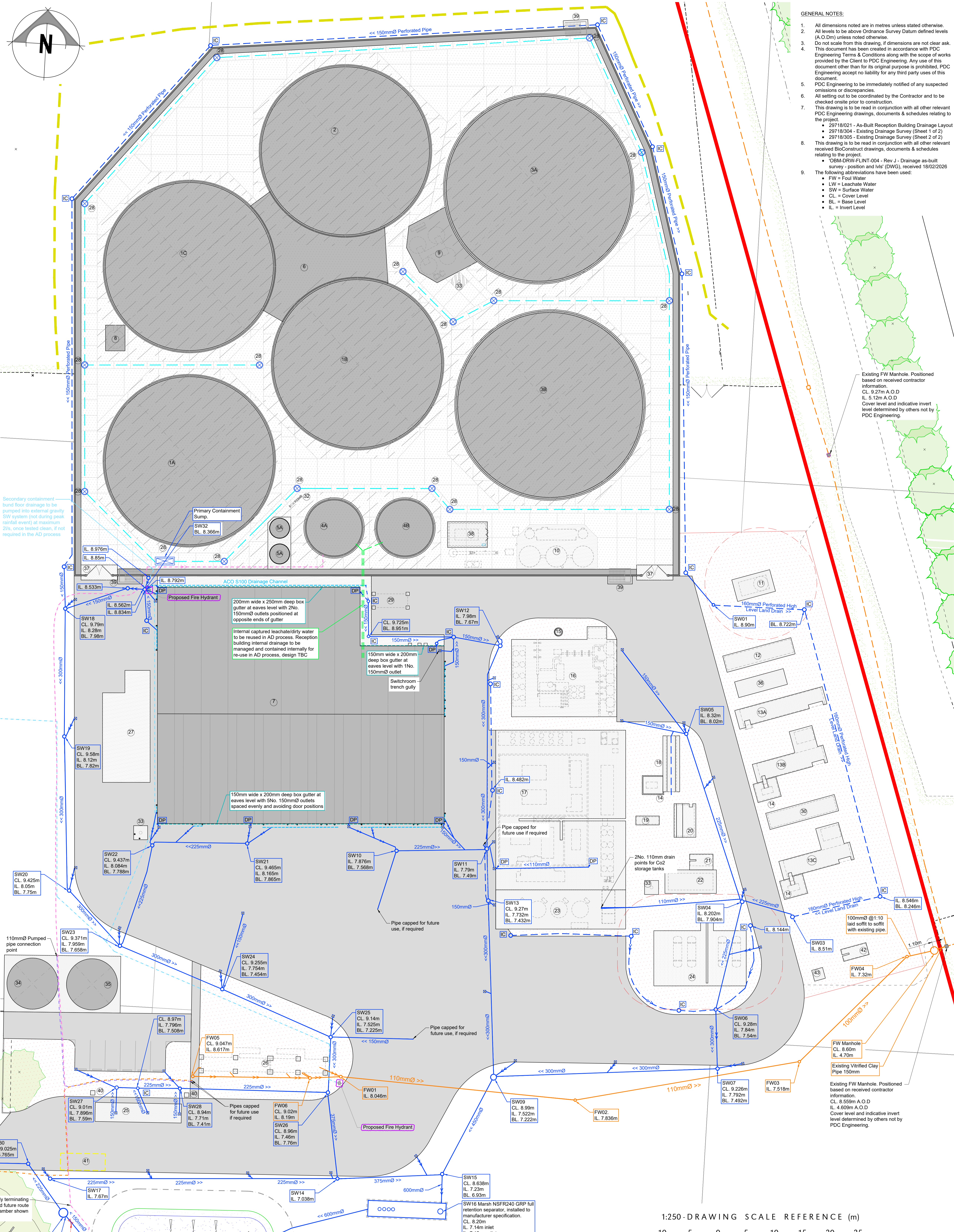


- PROPOSED PLANT KEY:**
- 1A Fermenter 1 (30m<sup>0</sup>)
  - 1B Fermenter 2 (30m<sup>0</sup>)
  - 1C Fermenter 3 (30m<sup>0</sup>)
  - 2 Post Fermenter (30m<sup>0</sup>)
  - 3A Digestate Storage Tank 1 (33m<sup>0</sup>)
  - 3B Digestate Storage Tank 2 (33m<sup>0</sup>)
  - 4A Pre-storage Tank 1
  - 4B Pre-storage Tank 2
  - 5A Quarantine Tank 1
  - 5B Quarantine Tank 2
  - 6 Technical Building
  - 7 Reception Building
  - 8 Ferric Chloride Tank
  - 9 Pasteurisation Tanks (4No. Thus)
  - 10 Desulphurisation & Gas Drying
  - 11 Gas Flare (10m Exclusion Zone)
  - 12 Boiler Container
  - 13A CHP 1 (2000kN)
  - 13B CHP 2 & Cooler (1500kN)
  - 13C CHP 3 & Cooler (1500kN)
  - 14 Transformer (3No. Thus)
  - 15 Condensate Pit
  - 16 Biogas Pre-treatment
  - 17 Gas Upgrading Unit & CO<sub>2</sub> Liquefaction
  - 18 LV Board
  - 19 Emergency Generator
  - 20 Substation
  - 21 PRS Kiosk
  - 22 Grid Entry Unit
  - 23 CO<sub>2</sub> Storage Tanks
  - 24 Propane Tanks
  - 25 Weighbridge
  - 26 Site Office
  - 27 Odour Control Filter
  - 28 Containment Area Floor Sump (17No. Thus)
  - 29 Storage Container
  - 30 Steam Generator
  - 31 Surface Water Holding Lagoon (1,823m<sup>3</sup> Storage Capacity)
  - 32 Pump Equipment
  - 33 Lightning Protection Column (3No. Thus)
  - 34 Fire Water Tank (9.14m<sup>0</sup>)
  - 35 Process Water Tank (9.14m<sup>0</sup>)
  - 36 Cooler 1
  - 37 Bund Gate (2No.)
  - 38 Oxygen Generator
  - 39 Emergency Access Steps (3No.)
  - 40 Traffic Light Plinth (2No.)
  - 41 Wheel Wash (Spec TBC by Client)
  - 42 PRS Kiosk (Toyota)
  - 43 Equipment TBC

- DRAINAGE KEY:**
- - - Existing Surface Water Network (SW)
  - - - Existing Foul Water Main (FW) (Positioned Indicatively)
  - - - Proposed Leachate Water Pumped Pipe (LW)
  - - - Proposed Clean Water Pumped Pipe

- AS BUILT DRAINAGE KEY:**
- Surface Water Gravity Drainage (SW)
  - Surface Water Filter Drain (SW)
  - Surface Water Pumped Pipe (SW)
  - Surface Water Manhole (SW)
  - Surface Water Inspection Chamber (SW)
  - Surface Water Downpipe (SW)
  - Surface Water Gully (SW)
  - ACO Drainage Channel (SW)
  - Surface Water Box Gutter (SW)
  - Process Water Pumped Pipe
  - Fire Water Tank Pumped Pipe
  - Foul Water Gravity Drainage (FW)
  - Foul Water Pumped Pipe (FW)
  - Foul Water Manhole (FW)
  - Foul Water Cesspit (FW)

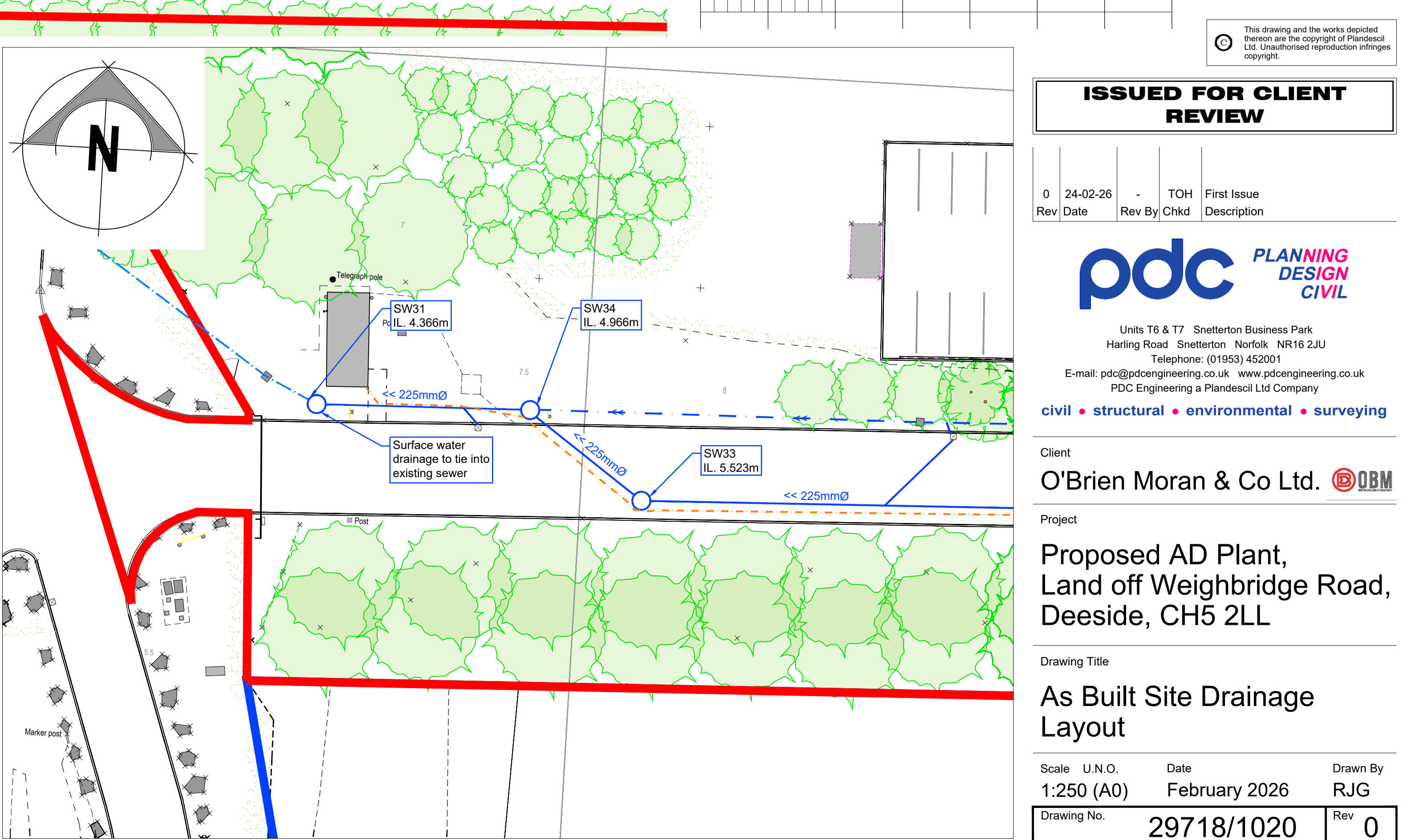
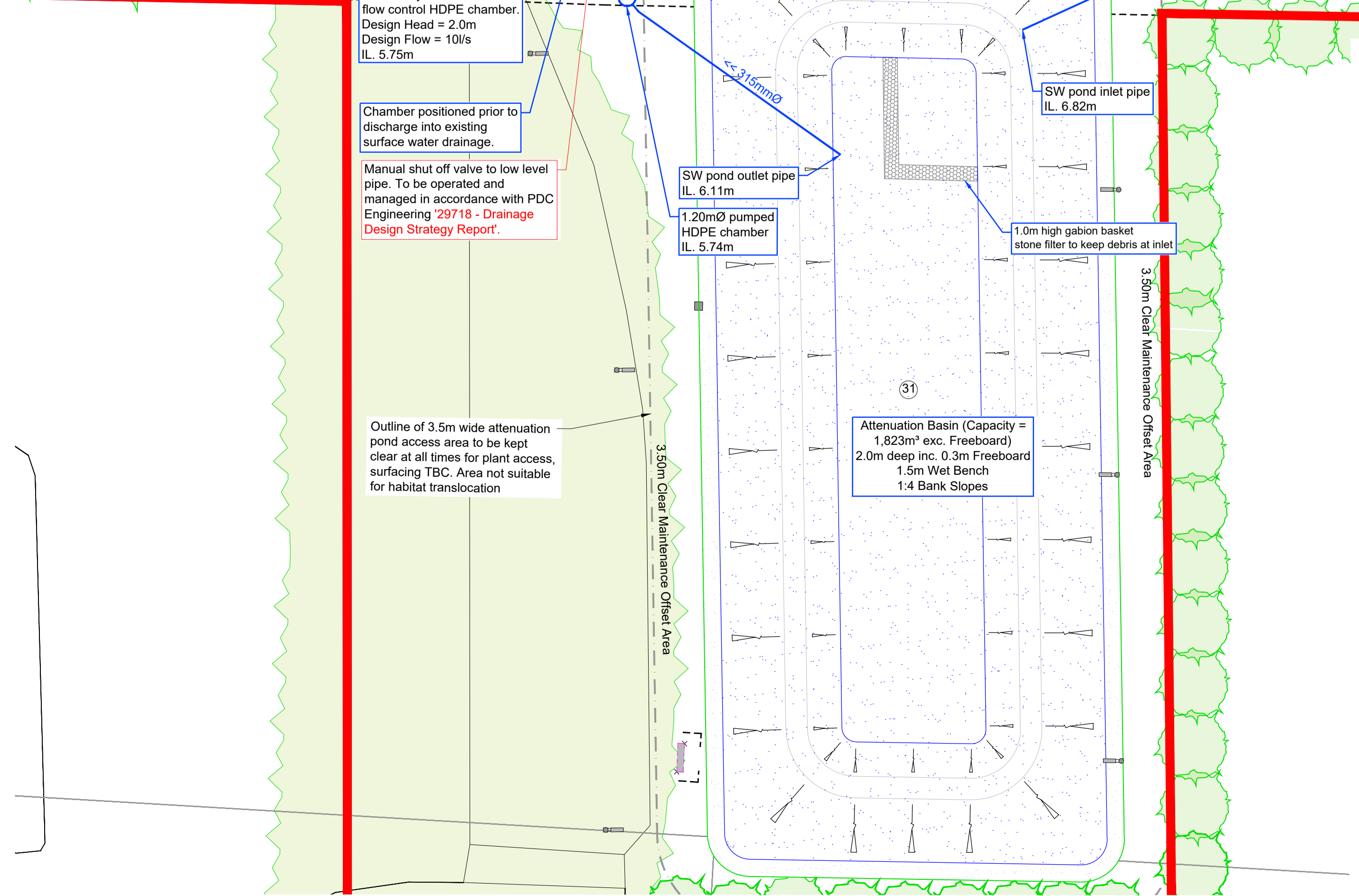
- GENERAL KEY:**
- Site Boundary
  - Asphalt Surfacing
  - Containment Bund Floor Slab - Type A (Thickness Varies 175mm - 200mm)
  - 200mm Thick Containment Bund Floor Slab - Type B
  - 100mm Thick Containment Bund Floor Slab - Type C
  - Hardcore / D.I.T Type 1 Surfacing
  - Non Dirty Containment Floor Sump (Type Varies)
  - Non Dirty Containment Floor Drainage Channel
  - Existing Reptile Fencing
  - Wheel Wash (TBC by Client)
  - Emergency Staircase



- GENERAL NOTES:**
1. All dimensions noted are in metres unless stated otherwise.
  2. All levels to be above Ordnance Survey Datum defined levels (A.O.Dm) unless noted otherwise.
  3. Do not scale from this drawing, if dimensions are not clear ask.
  4. This document has been created in accordance with PDC Engineering Terms & Conditions along with the scope of works provided by the Client to PDC Engineering. Any use of this document other than for its original purpose is prohibited. PDC Engineering accept no liability for any third party uses of this document.
  5. PDC Engineering to be immediately notified of any suspected omissions or discrepancies.
  6. All setting out to be coordinated by the Contractor and to be checked onsite prior to construction.
  7. This drawing is to be read in conjunction with all other relevant PDC Engineering drawings, documents & schedules relating to the project.
    - 29718/021 - As-Built Reception Building Drainage Layout
    - 29718/304 - Existing Drainage Survey (Sheet 1 of 2)
    - 29718/305 - Existing Drainage Survey (Sheet 2 of 2)
  8. This drawing is to be read in conjunction with all other relevant received BioConstruct drawings, documents & schedules relating to the project.
    - OBM-DRW-FLINT-004 - Rev J - Drainage as-built survey - position and lvs' (DWG), received 18/02/2026
  9. The following abbreviations have been used:
    - FW = Foul Water
    - LW = Leachate Water
    - SW = Surface Water
    - CL = Cover Level
    - BL = Base Level
    - IL = Invert Level

Existing FW Manhole Positioned based on received contractor information.  
 CL 5.27m A.O.D  
 IL 5.12m A.O.D  
 Cover level and indicative invert level determined by others not by PDC Engineering.

Existing FW Manhole Positioned based on received contractor information.  
 CL 8.559m A.O.D  
 IL 4.609m A.O.D  
 Cover level and indicative invert level determined by others not by PDC Engineering.



**ISSUED FOR CLIENT REVIEW**

Rev	Date	Rev By	Chd	First Issue	Description
0	24-02-26		TOH	First Issue	

**pdc** PLANNING DESIGN CIVIL

Units T6 & T7 Snettleton Business Park  
 Harling Road Snettleton Norfolk NR16 2JU  
 Telephone: (01853) 452001  
 E-mail: pdc@pdcengineering.co.uk www.pdcengineering.co.uk  
 PDC Engineering a Flancess Ltd Company

civil • structural • environmental • surveying

Client: **O'Brien Moran & Co Ltd.**

Project: **Proposed AD Plant, Land off Weighbridge Road, Deeside, CH5 2LL**

Drawing Title: **As Built Site Drainage Layout**

Scale: U.N.O. Date: February 2026 Drawn By: RJG

Drawing No.: **29718/1020** Rev: **0**

PROPOSED SITE LAYOUT - VIEWPORT AREA 1  
 Scale 1:250

PROPOSED SITE LAYOUT - VIEWPORT AREA 2  
 Scale 1:250