



Element, Unit C6, Emery Court, The Embankment Business Park, Heaton Mersey, Stockport, SK4 3GL
Your Element Contact: Darren Price (+44 (0)7712 658 483)
E: darren.price@element.com

Stack Emissions Testing Report Commissioned by
Glannmiheli AD Facility

Installation Name & Address

Glannmiheli AD Facility
G & A Powell
Glanmiheli AD Facility
Kerry
Newtown
Powys
SY16 4LN

EPR Permit: EPR/BB3697HD

Stack Reference
Engine 1

Dates of the Monitoring Campaign
3rd February 2026


Job Reference Number
EMT15589

Report Written by Keith Miller Team Leader MCERTS Level 2 MM02 135 TE1 TE2 TE3 TE4
--

Report Approved by John Hawkins Technical Report Writer MCERTS Level 2 MM 02 122 TE1 TE2 TE3 TE4
--

Report Date 20th February 2026
--

Version Version 1

Signature of Report Approver 
--

CONTENTS

TITLE PAGE

CONTENTS

EXECUTIVE SUMMARY

Monitoring Objectives	3
Monitoring Results	4
Monitoring Dates & Times	5
Process Details	6
Monitoring & Analytical Methods	7
Summary of Sampling Deviations	7
Sampling Location	8
Plant Photos / Sample Points	9

APPENDIX 1 - Monitoring Personnel & List of Equipment

APPENDIX 2 - Raw Data, Sampling Equations & Charts

Opinions and interpretations expressed herein are outside the scope of Element's ISO 17025 accreditation.

This test report shall not be reproduced, except in full, without the written approval of Element.

Executive Summary

(Page 1 of 7)

MONITORING OBJECTIVES

Glanmiheli AD Facility, Powys

Engine 1

3rd February 2026

Overall Aim of the Monitoring Campaign

Element were commissioned by Glanmiheli AD Facility to carry out stack emissions testing on the Engine 1 at Powys.

The aim of the monitoring campaign was to demonstrate compliance with a set of emission limit values (ELVs) as specified in the Site's Permit.

Special Requirements

There were no special requirements.

Target Parameters

Sulphur Dioxide, Total VOCs (as Carbon), Oxides of Nitrogen (as NO₂), Carbon Monoxide

Executive Summary
(Page 2 of 7)

MONITORING RESULTS

Glannmiheli AD Facility, Powys
Engine 1
3rd February 2026

where MU = Measurement Uncertainty associated with the Result

Parameter	Concentration			
	Units	Result	MU +/-	Limit
Sulphur Dioxide	¹ mg/m ³	259	19.4	350
Total VOCs (as Carbon)	¹ mg/m ³	898	67.2	1000
Oxides of Nitrogen (as NO ₂)	¹ mg/m ³	458	34.9	500
Carbon Monoxide	¹ mg/m ³	787	59.8	1400
Oxygen	% v/v	Dry 6.5	0.46	
Water Vapour	% v/v	11.0	0.51	

¹ Reference Conditions (REF) are: 273K, 101.3kPa, dry gas, 5% oxygen.

Executive Summary

(Page 3 of 7)

MONITORING DATE(S) & TIMES

Glannmiheli AD Facility, Powys

Engine 1

3rd February 2026

Parameter	Units	Concentration	Sampling Date(s)	Sampling Times	Duration mins
Sulphur Dioxide	R1 mg/m ³	259	03/02/2026	12:00 - 13:00	60
Total VOCs (as Carbon)	R1 mg/m ³	898	03/02/2026	12:00 - 13:00	60
Oxides of Nitrogen (as NO ₂)	R1 mg/m ³	458	03/02/2026	12:00 - 13:00	60
Carbon Monoxide	R1 mg/m ³	787	03/02/2026	12:00 - 13:00	60
Oxygen	R1 % v/v	6.5	03/02/2026	12:00 - 13:00	60

All results are expressed at the respective reference conditions.

Executive Summary

(Page 4 of 7)

PROCESS DETAILS

Glannmiheli AD Facility, Powys

Engine 1

3rd February 2026

Standard Operating Conditions

Parameter	Value
Process Status	Normal Operation
Capacity (of 100%) and Tonnes / Hour	500kW Full Load
Continuous or Batch Process	Continuous
Feedstock (if applicable)	Farm Wastes
Abatement System	None
Abatement System Running Status	N/A
Fuel	Digester Biogas
Plume Appearance	None

Executive Summary

(Page 5 of 7)

MONITORING & ANALYTICAL METHODS

Glannmiheli AD Facility, Powys

Engine 1

3rd February 2026

Parameter	Monitoring				Analysis				Overall Status	LOD (Average)
	Standard	Technical Procedure	Sampling Status	Testing Lab	Analytical Procedure	Analytical Technique	Analysis Status	Analysis Lab		
Sulphur Dioxide	EN 14791	MD 009	MCERTS	EET	MD-101	IC	MCERTS	EET	MCERTS	0.123 mg/m ³
Water Vapour	EN 14790	MD 005	MCERTS	EET	MD 005	Gravimetric	MCERTS	EET	MCERTS	0.10 % v/v
Total VOCs (as Carbon)	EN 12619:2013	MD 020	MCERTS	EET	Flame Ionisation Detection by TESTA iFiD			MCERTS	0.32 mg/m ³	
Oxides of Nitrogen (as NO ₂)	EN 14792	MD 039	MCERTS	EET	Chemiluminescence by Horiba PG-350E			MCERTS	0.41 mg/m ³	
Carbon Monoxide	EN 15058	MD 039	MCERTS	EET	NDIR by Horiba PG-350E			MCERTS	0.9 mg/m ³	
Oxygen	EN 14789	MD 039	MCERTS	EET	Dry Paramagnetic Cell by Horiba PG-350E			MCERTS	0.1 %	

ANALYSIS LABORATORIES

(with short name reference as appears in the table above)

Element (Stockport Lab - EET)	ISO 17025 Accreditation Number: UKAS 4279
-------------------------------	---

SUMMARY OF SAMPLING DEVIATIONS

Parameter	Run	Deviation
All Parameters	All	There are no deviations associated with the sampling employed.

Executive Summary
(Page 6 of 7)

SUITABILITY OF SAMPLING LOCATION

Duct Characteristics

Parameter	Units	Value
Type	-	Circular
Depth	m	0.20
Width	m	-
Area	m ²	0.03
Port Depth	cm	2
Orientation of Duct	-	Vertical
Number of Ports	-	1
Sample Port Size	-	1" BSP

Location of Sampling Platform

General Platform Information	Value
Permanent / Temporary Platform	On Ground
Inside / Outside	Inside

Platform Details

EA Technical Guidance Note M1 / EN 15259 Platform Requirements	Value
Sufficient working area to manipulate probe and operate the measuring instruments	Yes
Platform has 2 levels of handrails (approx. 0.5m & 1.0m high)	N/A
Platform has vertical base boards (approx. 0.25m high)	N/A
Platform has chains / self closing gates at top of ladders	N/A
There are no obstructions present which hamper insertion of sampling equipment	Yes
Safe Access Available	Yes
Easy Access Available	Yes

Sampling Location / Platform Improvement Recommendations

Due to the nature of the access into the duct, it is not possible to conduct a full velocity profile, however no particulate phase sampling was required and all gaseous species were considered to be mixed sufficiently for the purposes of these tests. There is also no requirement to undertake a homogeneity test as per EN 15259 and as such the location cannot be compared against that or the criteria within TGN M1. The sampling location used in this instance has been approved for use by the Environment Agency.

EN 15259 Homogeneity Test Requirements

There is no requirement to perform a EN 15259 Homogeneity Test on this Stack.

Executive Summary
 (Page 7 of 7)

PLANT PHOTOS

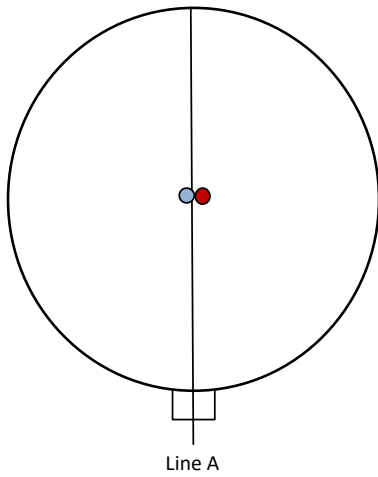
Photo 1



Photo 2



SAMPLE POINTS



- where**
- = isokinetic point sampled at
 - = isokinetic point not sampled at
 - = combustion gases sample point
 - = non-isokinetic sample point

APPENDICES

APPENDIX CONTENTS

APPENDIX 1 - Stack Emissions Monitoring Personnel, List of Equipment & Methods and Technical Procedures Used

APPENDIX 2 - Summaries, Calculations, Raw Data and Charts

STACK EMISSIONS MONITORING PERSONNEL

Position	Name	MCERTS Accreditation	MCERTS Number	Technical Endorsements
Team Leader	Keith Miller	MCERTS Level 2	MM02 135	TE1 TE2 TE3 TE4

LIST OF EQUIPMENT

Extractive Sampling		Instrumental Analysers		Miscellaneous Items	
Equipment Type	Equipment I.D.	Equipment Type	Equipment I.D.	Equipment Type	Equipment I.D.
Control Box DGM (1)	-	Horiba PG-350E	CAT 9.30	Digital Manometer (1)	-
Control Box DGM (2)	-	Horiba PG-350E	-	Digital Manometer (2)	-
Box Thermocouples (1)	-	Servomex 4900	-	Digital Temperature Meter	-
Box Thermocouples (2)	-	Ankersmid AOX210	-	Stopwatch	-
Umbilical (1)	-	ABB AO2020-URAS26	-	Barometer	CAT 13.104
Umbilical (2)	-	Testo 350 XL	-	Stack Thermocouple (1)	CAT 4.0176
Oven Box (1)	-	M&C PSS5	CAT 4.1963	Stack Thermocouple (2)	-
Oven Box (2)	-	Gasmet DX4000	-	Stack Thermocouple (3)	-
Heated Probe (1)	CAT 5.259	Gasmet Sampling System	-	1m Heated Line (1)	-
Heated Probe (2)	-	TESTA iFiD	CAT 8.58	1m Heated Line (2)	-
Heated Probe (3)	-	M&C PSS	CAT 12.171	1m Heated Line (3)	-
S-Pitot (1)	-	Mass Flow Controller (1)	CAT 6.77	5m Heated Line (1)	-
S-Pitot (2)	-	Mass Flow Controller (2)	CAT 6.78	15m Heated Line (1)	CAT 20.158
L-Pitot	-	Mass View (1)	CAT 25.73	20m Heated Line (1)	CAT 20.239
Site Balance	CAT 17.55	Mass View (2)	CAT 25.74	20m Heated Line (2)	-
500g / 1Kg Check Weights	CAT 17.55	Hioki 5043 (V)	-	Dual Channel Heater Controller	CAT 3.187
Last Impinger Arm	CAT 4.1190	Hioki 5043 (V)	-	Single Channel Heater Controller	-
Callipers	-	Bioaerosols Temperature Logger	-	Laboratory Balance	-
Tubes Kit Thermocouple	-	Electronic Refrigerator	-	Tape Measure	CAT 16.146

METHODS & TECHNICAL PROCEDURES USED

Parameter	Standard	Technical Procedure
Sulphur Dioxide	EN 14791	MD 009
Water Vapour	EN 14790	MD 005
Total VOCs (as Carbon)	EN 12619:2013	MD 020
Oxides of Nitrogen (as NO ₂)	EN 14792	MD 039
Carbon Monoxide	EN 15058	MD 039
Oxygen	EN 14789	MD 039

SULPHUR DIOXIDE: RESULTS SUMMARY

Glanmiheli AD Facility, Powys

Engine 1

Sample Runs

Parameter	Units	Run 1	Mean
Concentration	mg/m ³	259	259
Uncertainty	±mg/m ³	19.4	19.4
Mass Emission	g/hr		
Uncertainty	±g/hr		

Parameter	Units	Run 1	Mean
Water Vapour	% v/v	11.0	11.0
Uncertainty	±% v/v	0.51	0.51

Blank Runs

Parameter	Units	Blank 1	Maximum
Concentration	mg/m ³	< 0.10	< 0.10

General Sampling Information

Parameter	Value
Standard	EN 14791
Technical Procedure	MD 009
Name of Analytical Laboratory	EET
Analytical Laboratory's Procedure	MD-101
ISO 17025 Accredited Analysis?	MCERTS
Date of Sample Analysis	11/02/2026
Probe Material	Stainless Steel
Filter Housing Material	Quartz Glass
Impinger Material	Quartz Glass
Absorption Solution	0.3% Hydrogen Peroxide
Positioning of Filter	Out Stack
Filter Size and Material	47mm Quartz Fibre
Number of Sampling Lines Used	1 / 1
Number of Sampling Points Used	1 / 1
Sample Point I.D.'s	A1

FORMAT: Number Used / Number Required

FORMAT: Number Used / Number Required

Reference Conditions

Reference Conditions are: 273K, 101.3kPa, dry gas, 5% oxygen.

SULPHUR DIOXIDE: SAMPLING DETAILS

Sample Runs

Parameter	Units	Run 1
Sampling Times	-	12:00 - 13:00
Sampling Dates	-	03/02/2026
Sampling Device	-	MFC / MV
Duration	mins	60
Volume Sampled (STP, Dry)	m ³	0.1848
Volume Sampled (STP, Wet)	m ³	0.2076
Volume Sampled (REF)	m ³	0.1673
Sample Flow Rate	l/min	2.95
Laboratory Result for Front Impingers	µg/ml	158.12
Laboratory Result for Back Impinger	µg/ml	0.33
Volume in Front Impingers	ml	273.9
Volume in Back Impinger	ml	137.9
Mass in Front Impingers	µg	43309.1
Mass in Back Impinger	µg	45.5
Total Mass Collected	µg	43354.6
Calculated Concentration	mg/m ³	259.11
Liquid Trap Start Mass	g	1588.2
Liquid Trap End Mass	g	1606.0
Silica Trap Start Mass	g	1563.1
Silica Trap End Mass	g	1563.6
Total Mass Of Water Vapour	g	18.3
Calculated Water Vapour	% v/v	10.99

Where: MFC stands for Mass Flow Controller, MV stands for Mass View Flowmeter

Blank Runs

Parameter	Units	Blank 1
Blank Dates	-	03/02/2026
Average Volume Sampled (REF)	m ³	0.1673
Laboratory Result for Impingers	µg/ml	< 0.05
Volume in Impingers	ml	320.8
Total Mass Collected	µg	< 16.0
Calculated Concentration	mg/m ³	< 0.10

SULPHUR DIOXIDE: QUALITY ASSURANCE

Sample Runs

Leak Test Results	Units	Run 1
Mean Sampling Rate	l/min	3.0
Pre-Sampling Leak Rate	l/min	0.01
Post-Sampling Leak Rate	l/min	0.05
Allowable Leak Rate	l/min	0.06
Leak Test Acceptable	-	Yes

Absorption Efficiency	Units	Run 1
Absorption Efficiency	%	99.9
Allowable Absorption Efficiency	%	95
Absorption Efficiency Acceptable	-	Yes

Water Droplets	Units	Run 1
Are Water Droplets Present	-	No

MU (Concurrent Water Vapour)	Units	Run 1
Measurement Uncertainty (MU)	%	4.6
Allowable MU	%	20.0
MU Acceptable	%	Yes

Silica Gel (Concurrent Water Vapour)	Units	Run 1
Less than 50% Faded	%	Yes

Test Conditions	Units	Run 1
Ambient Temperature Recorded?	-	Yes

Blank Runs

Leak Test Results	Units	Blank 1
Expected Sampling Rate	l/min	3.0
Pre-Sampling Leak Rate	l/min	0.01
Post-Sampling Leak Rate	l/min	0.02
Allowable Leak Rate	l/min	0.06
Leak Test Acceptable	-	Yes

Validity of Blank vs ELV	Units	Blank 1
Allowable Blank	mg/m ³	35.0
Blank Acceptable	-	Yes

Method Deviations

Nature of Deviation	Run Number
(x = deviation applies to the associated run, wx = deviation also applies to the concurrent water vapour run)	1
There are no deviations associated with the sampling employed.	wx

SULPHUR DIOXIDE: MEASUREMENT UNCERTAINTY CALCULATIONS

Measured Quantities	Value		Standard uncertainty		
	Symbol	Run 1	Symbol	Units	Run 1
Sampled Volume (STP)	V _m	0.1848	uV _m	m ³	0.0037
Leak	L	1.69	uL	%	-
Laboratory Result	L _r	2.55	uL _r	%	-

Measured Quantities	Uncertainty as a Percentage		Requirement of Standard
	Units	Run 1	
Sampled Volume (STP)	%	2.00	≤2%
Leak	%	1.69	≤2%
Laboratory Result	%	2.55	No Requirement

Measured Quantities	Uncertainty in Measurement Units			Sensitivity Coefficient	
	Symbol	Units	Run 1	Run 1	
Sampled Volume (STP)	V _m	m ³	0.1848	1402	
Leak	L	mg/m ³	2.533	1.00	
Laboratory Result	L _r	mg/m ³	6.607	1.00	

Measured Quantities	Uncertainty in Result	
	Units	Run 1
Sampled Volume (STP)	mg/m ³	5.182
Leak	mg/m ³	2.533
Laboratory Result	mg/m ³	6.607

Measured Quantities	Oxygen Correction Part of MU Budget	
	Units	Run 1
O ₂ Correction Factor	-	1.10
Stack Gas O ₂ Content	% v/v	6.51
MU for O ₂ Correction	-	0.04
Overall MU For O ₂ Measurement	%	3.45

Parameter	Units	Run 1
Combined uncertainty	mg/m ³	8.77
Expanded uncertainty (95% confidence), without Oxygen Correction	mg/m ³	17.19
Expanded uncertainty (95% confidence), with Oxygen Correction	mg/m ³	19.38
Expanded uncertainty (95% confidence), estimated with Method Deviations	mg/m ³	19.38
Reported Uncertainty	mg/m ³	19.38
Expanded uncertainty (95% confidence), without Oxygen Correction	%	6.6
Expanded uncertainty (95% confidence), with Oxygen Correction	%	7.5
Expanded uncertainty (95% confidence), estimated with Method Deviations	%	7.5
Reported Uncertainty	%	7.5
Reported Uncertainty as % of ELV	%	5.5

TOTAL VOCs (as CARBON): RESULTS SUMMARY

Glannmiheli AD Facility, Powys
Engine 1

Sample Runs

Parameter	Units	Run 1	Mean
Concentration	mg/m ³	898	898
Uncertainty	±mg/m ³	67.2	67.2
Mass Emission	g/hr		
Uncertainty	±g/hr		

General Sampling Information

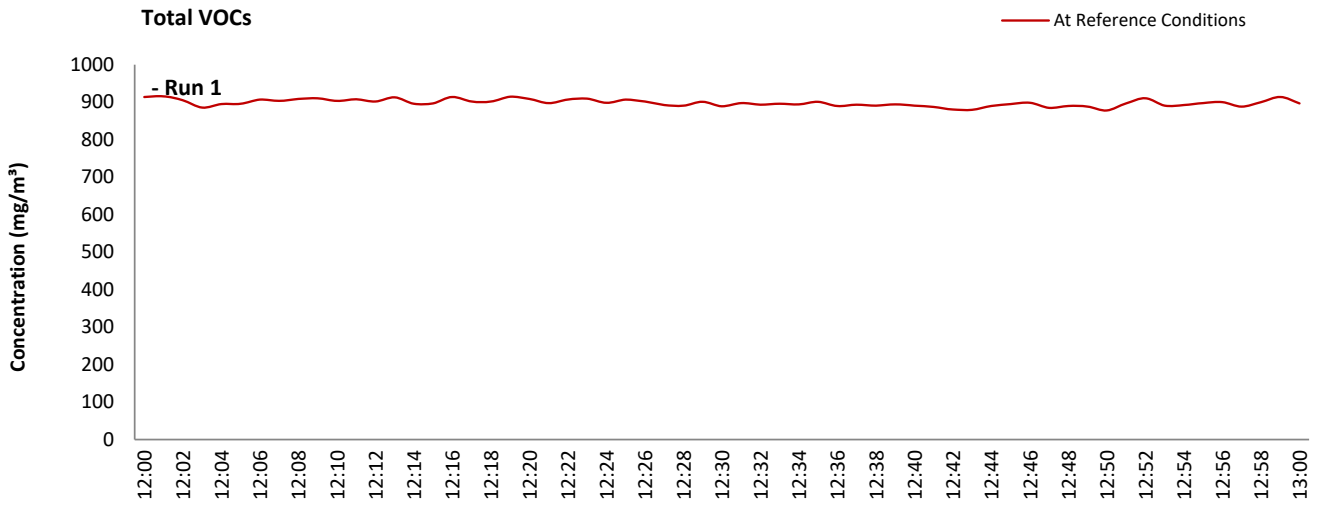
Parameter	Value	
Standard	EN 12619:2013	
Technical Procedure	MD 020	
Probe Material	Stainless Steel	
Filtration Type / Size	0.1µm Glass Fibre	
Heated Head Filter Used	Yes	
Heated Line Temperature	180°C	
Span Gas Type	Propane In Synthetic Air (5 Grade)	
Span Gas Reference Number	CYL12.0685	
Span Gas Expiry Date	08/07/2026	
Span Gas Start Pressure (bar)	50	
Gas Cylinder Concentration (ppm)	581	
Span Gas Set Point (ppm)	581.00	
Span Gas Uncertainty (%)	2	
Zero Gas Type	Synthetic Air (5 Grade)	
Number of Sampling Lines Used	1 / 1	FORMAT: Number Used / Number Required
Number of Sampling Points Used	1 / 1	FORMAT: Number Used / Number Required
Sample Point I.D.'s	A1	

Reference Conditions

Reference Conditions are: 273K, 101.3kPa, dry gas, 5% oxygen.

TOTAL VOCs (as CARBON): DATA TREND

Graphical Trend of Data



TOTAL VOCs (as CARBON): SAMPLING DETAILS & QUALITY ASSURANCE

Sampling Details

Parameter	Units	Run 1
Sampling Times	-	12:00 - 13:00
Sampling Dates	-	03/02/2026
Instrument Range	ppm	1000
Span Gas Value	ppm	581.0

Quality Assurance

	Zero Drift	Units	Run 1
CAL 1	Zero Down Sampling Line (Pre)	ppm	0.23
	Zero Down Sampling Line (Post)	ppm	0.77
	Zero Drift	ppm	0.54
	Zero Drift	%	0.09
	Drift Correction Applied	2-5%	No
	Allowable Zero Drift	± ppm	29.05
	Zero Drift Acceptable	-	Yes

	Span Drift	Units	Run 1
CAL 1	Span Down Sampling Line (Pre)	ppm	585.50
	Span Down Sampling Line (Post)	ppm	589.00
	Span Drift	ppm	3.50
	Span Drift	%	0.60
	Drift Correction Applied	2-5%	No
	Allowable Span Drift	± ppm	29.05
	Span Drift Acceptable	-	Yes

Test Conditions	Units	Run 1
Run Ambient Temperature Range	°C	6

Method Deviations

Nature of Deviation	Run Number
(x = deviation applies to the associated run)	1
There are no deviations associated with the sampling employed.	x

TOTAL VOCs (as CARBON): MEASUREMENT UNCERTAINTY CALCULATIONS

Performance characteristics	RUN 1	Units
Limit value	1000.0	mg/m ³ (REF)
Allowable MU	15.0	%
Measured concentration	813.45	mg/m ³ (STP, dry)
Range Used	1000.0	ppm
Range Used [A]	1606.1	mg/m ³
Cal gas conc.	581.0	ppm
Conversion	1.61	ppm to mg/m ³
MCERTS Range [B]	15.0	mg/m ³
Lower of [A] or [B]	15.0	mg/m ³
Cal gas conc.	933.2	mg/m ³

Performance characteristics	RUN 1	Units
Response time	18	seconds
Number of readings in measurement	60	-
Repeatability at zero	0.05	% full scale
Repeatability at span level	0.08	% full scale
Deviation from linearity	0.23	% of value
Zero drift	0.09	% full scale
Span drift	0.60	% full scale
Volume or pressure flow dependence	-0.42	% of full scale
Atmospheric pressure dependence	0.30	% of value/kPa
Ambient temperature dependence	-0.60	% full scale/10K
Combined interference	3.90	% range
Dependence on voltage	-0.46	% full scale/10V
Losses in the line (leak)	0.00	% of value
Uncertainty of calibration gas	2.00	% of value

Performance characteristic	RUN 1	Units
Standard deviation of repeatability at zero	use rep at span	mg/m ³
Standard deviation of repeatability at span level	0.01	mg/m ³
Lack of fit	0.02	mg/m ³
Drift	3.30	mg/m ³
Volume or pressure flow dependence	0.00	mg/m ³
Atmospheric pressure dependence	0.01	mg/m ³
Ambient temperature dependence	-0.09	mg/m ³
Combined interference (from MCERTS Certificate)	0.34	mg/m ³
Dependence on voltage	-0.05	mg/m ³
Losses in the line (leak)	0.00	mg/m ³
Uncertainty of calibration gas	9.39	mg/m ³

Measurement uncertainty	Result	RUN 1	Units
Combined uncertainty		813.45	mg/m ³
Expanded uncertainty		9.96	mg/m ³
Expanded uncertainty	k = 1.96	19.53	mg/m ³
Uncertainty corrected to std conds. (O ₂)		21.56	mg/m ³ (REF)

	RUN 1	Units
Expanded uncertainty (no O ₂) - at 95% Confidence	2.40	% of Value
Expanded uncertainty (no O ₂) - at 95% Confidence	1.95	% at ELV
Overall Allowable uncertainty (no O ₂) - at 95% Confidence	15.0	% at ELV
Result of Compliance with Uncertainty Requirement	N/A	-

	RUN 1	Units
Expanded uncertainty (with O ₂) - at 95% Confidence	7.48	% of Value
Expanded uncertainty (with O ₂) - at 95% Confidence	7.40	% at ELV
Overall Allowable uncertainty (with O ₂) - at 95% Confidence	16.6	% at ELV
Result of Compliance with Uncertainty Requirement	COMPLIANT	-

Requirement for SRM is that Uncertainty should be <15% of the value at the ELV, on a dry gas basis, or if O₂ correction is applied less than 15% + the uncertainty associated with the O₂ correction (using sqrt of sum squares to add uncertainty components).

OXIDES OF NITROGEN (as NO₂): RESULTS SUMMARY

Glannmiheli AD Facility, Powys
Engine 1

Sample Runs

Parameter	Units	Run 1	Mean
Concentration	mg/m ³	458	458
Uncertainty	±mg/m ³	34.9	34.9
Mass Emission	g/hr		
Uncertainty	±g/hr		

General Sampling Information

Parameter	Value
Standard	EN 14792
Technical Procedure	MD 039
Probe Material	Stainless Steel
Filtration Type / Size	0.1µm Glass Fibre
Heated Head Filter Used	Yes
Heated Line Temperature	180°C
Date & Result of Last Converter Check	04/12/2025 - 97.3%
Span Gas Type	Nitrogen Monoxide
Span Gas Reference Number	CYL12.0592
Span Gas Expiry Date	28/02/2026
Span Gas Start Pressure (bar)	50
Gas Cylinder Concentration (ppm)	2103
Span Gas Uncertainty (%)	2
Zero Gas Type	Nitrogen (5 Grade)
Number of Sampling Lines Used	1 / 1
Number of Sampling Points Used	1 / 1
Sample Point I.D.'s	A1

NOTE: Dilution performed to achieve correct span value

FORMAT: Number Used / Number Required

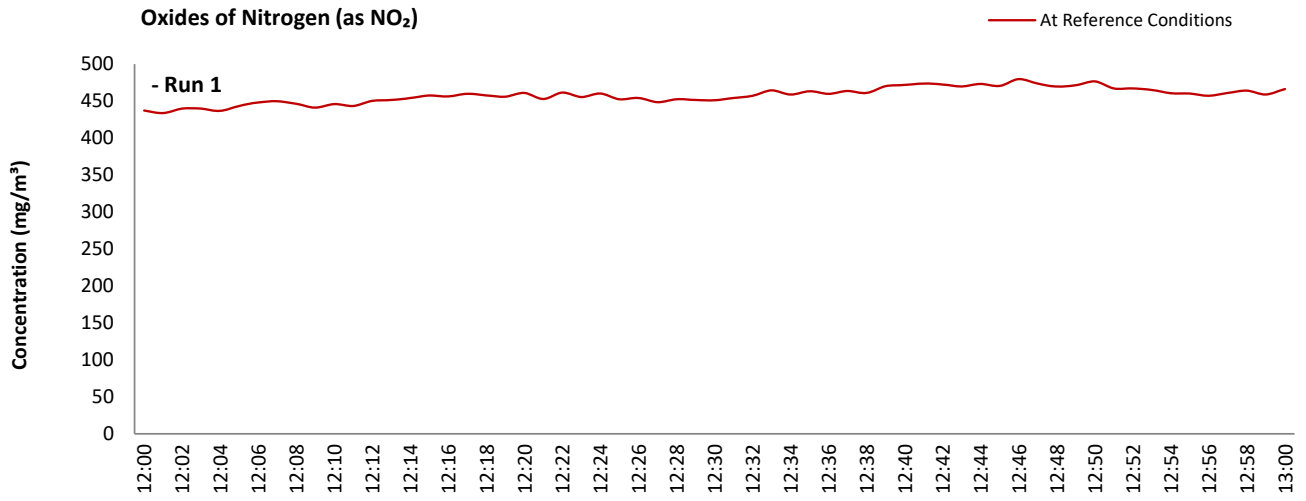
FORMAT: Number Used / Number Required

Reference Conditions

Reference Conditions are: 273K, 101.3kPa, dry gas, 5% oxygen.

OXIDES OF NITROGEN (as NO₂): DATA TREND

Graphical Trend of Data



OXIDES OF NITROGEN (as NO₂): SAMPLING DETAILS & QUALITY ASSURANCE

Sampling Details

Parameter	Units	Run 1
Sampling Times	-	12:00 - 13:00
Sampling Dates	-	03/02/2026
Instrument Range	ppm	500
Span Gas Value	ppm	243.6

Quality Assurance

Conditioning Unit Temperature	Units	Run 1
Average Temperature	°C	N/A
Allowable Temperature	< °C	N/A
Temperature Acceptable	-	N/A

	Units	Run 1	
Zero Drift			
CAL 1	Zero at Analyser (Pre)	ppm	0.00
	Zero at Analyser (Post)	ppm	0.00
	Zero Drift	ppm	0.00
	Zero Drift	%	0.00
	Drift Correction Applied	2-5%	No
	Allowable Zero Drift	± %	5.00
	Zero Drift Acceptable	-	Yes

	Units	Run 1	
Span Drift			
CAL 1	Span at Analyser (Pre)	ppm	243.60
	Span at Analyser (Post)	ppm	237.00
	Span Drift	ppm	-6.60
	Zero Adj. Span Drift	%	2.71
	Drift Correction Applied	2-5%	Yes
	Allowable Span Drift	± %	5.00
	Span Drift Acceptable	-	Yes

Test Conditions	Units	Run 1
Run Ambient Temperature Range	°C	6

Method Deviations

Nature of Deviation	Run Number
(x = deviation applies to the associated run)	1
There are no deviations associated with the sampling employed.	x

OXIDES OF NITROGEN (as NO₂): MEASUREMENT UNCERTAINTY CALCULATIONS

Performance characteristics	RUN 1	Units
Limit value	500.0	mg/m ³ (REF)
Allowable MU	10.0	%
Measured concentration	414.56	mg/m ³ (STP, dry)
Ratio NO / NO ₂	5	%
Range Used	500.0	ppm
Range Used [A]	1026.1	mg/m ³
Cal gas conc.	243.6	ppm
Conversion	2.05	ppm to mg/m ³
MCERTS Range [B]	205.0	mg/m ³
Lower of [A] or [B]	205.0	mg/m ³
Cal gas conc.	500.0	mg/m ³

Performance characteristics	RUN 1	Units
Response time	31	seconds
Number of readings in measurement	60	-
Repeatability at zero	0.00	% full scale
Repeatability at span level	0.10	% full scale
Deviation from linearity	0.38	% of value
Zero drift	0.00	% full scale
Span drift	0.00	% full scale
Volume or pressure flow dependence	0.10	% of full scale
Atmospheric pressure dependence	0.10	% of value/kPa
Ambient temperature dependence	0.04	% full scale/10K
Combined interference	0.63	% range
Dependence on voltage	-0.23	% full scale/10V
Converter efficiency	97.3	%
Losses in the line (leak)	0.00	% of value
Uncertainty of calibration gas blending	1.40	% of value
Uncertainty of calibration gas	2.00	% of value

Performance characteristic	RUN 1	Units
Standard deviation of repeatability at zero	use rep at span	mg/m ³
Standard deviation of repeatability at span level	0.01	mg/m ³
Lack of fit	0.45	mg/m ³
Drift	0.00	mg/m ³
Volume or pressure flow dependence	0.00	mg/m ³
Atmospheric pressure dependence	0.06	mg/m ³
Ambient temperature dependence	0.01	mg/m ³
Combined interference (from MCERTS Certificate)	0.75	mg/m ³
Dependence on voltage	-0.03	mg/m ³
Converter efficiency	0.32	mg/m ³
Losses in the line (leak)	0.00	mg/m ³
Uncertainty of calibration gas blending	3.35	mg/m ³
Uncertainty of calibration gas	4.79	mg/m ³

Measurement uncertainty	Result	RUN 1	Units
Combined uncertainty		414.56	mg/m ³
Expanded uncertainty	k = 1.96	5.92	mg/m ³
Expanded uncertainty		11.60	mg/m ³
Uncertainty corrected to std conds. (O ₂)		12.81	mg/m ³ (REF)

	RUN 1	Units
Expanded uncertainty (no O ₂) - at 95% Confidence	2.80	% of Value
Expanded uncertainty (no O ₂) - at 95% Confidence	2.32	% at ELV
Overall Allowable uncertainty (no O ₂) - at 95% Confidence	10.0	% at ELV
Result of Compliance with Uncertainty Requirement	N/A	-

	RUN 1	Units
Expanded uncertainty (with O ₂) - at 95% Confidence	7.61	% of Value
Expanded uncertainty (with O ₂) - at 95% Confidence	7.53	% at ELV
Overall Allowable uncertainty (with O ₂) - at 95% Confidence	12.3	% at ELV
Result of Compliance with Uncertainty Requirement	COMPLIANT	-

Requirement for SRM is that Uncertainty should be <10% of the value at the ELV, on a dry gas basis, or if O₂ correction is applied less than 10% + the uncertainty associated with the O₂ correction (using sqrt of sum squares to add uncertainty components).

CARBON MONOXIDE: RESULTS SUMMARY

Glannmiheli AD Facility, Powys
Engine 1

Sample Runs

Parameter	Units	Run 1	Mean
Concentration	mg/m ³	787	787
Uncertainty	±mg/m ³	59.8	59.8
Mass Emission	g/hr		
Uncertainty	±g/hr		

General Sampling Information

Parameter	Value
Standard	EN 15058
Technical Procedure	MD 039
Probe Material	Stainless Steel
Filtration Type / Size	0.1µm Glass Fibre
Heated Head Filter Used	Yes
Heated Line Temperature	180°C
Span Gas Type	Carbon Monoxide
Span Gas Reference Number	CYL12.0592
Span Gas Expiry Date	28/02/2026
Span Gas Start Pressure (bar)	50
Gas Cylinder Concentration (ppm)	4138.4
Span Gas Uncertainty (%)	2
Zero Gas Type	Nitrogen (5 Grade)
Number of Sampling Lines Used	1 / 1
Number of Sampling Points Used	1 / 1
Sample Point I.D.'s	A1

NOTE: Dilution performed to achieve correct span value

FORMAT: Number Used / Number Required

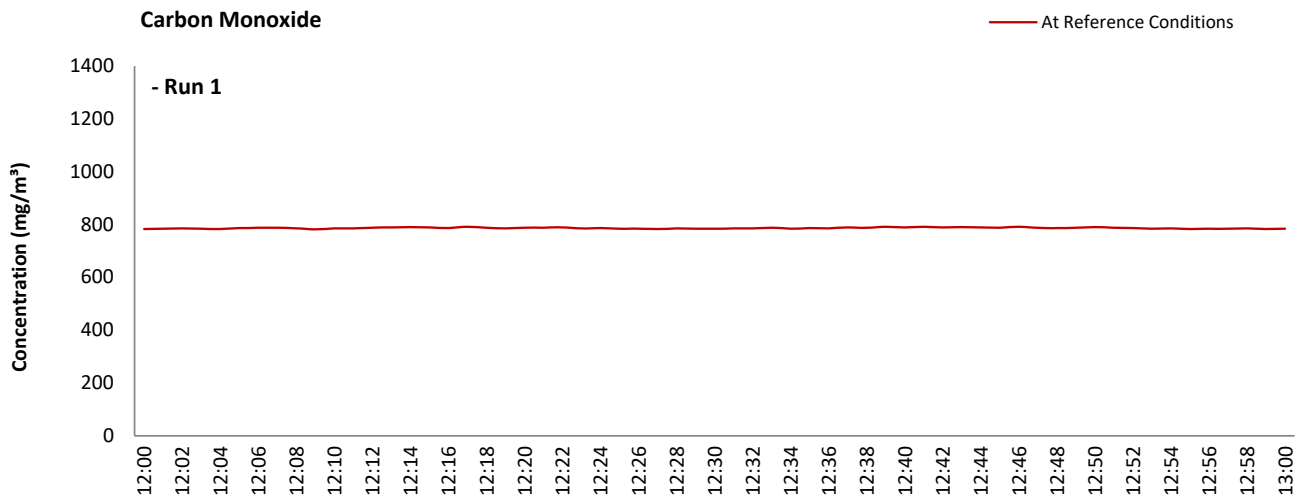
FORMAT: Number Used / Number Required

Reference Conditions

Reference Conditions are: 273K, 101.3kPa, dry gas, 5% oxygen.

CARBON MONOXIDE: DATA TREND

Graphical Trend of Data



CARBON MONOXIDE: SAMPLING DETAILS & QUALITY ASSURANCE

Sampling Details

Parameter	Units	Run 1
Sampling Times	-	12:00 - 13:00
Sampling Dates	-	03/02/2026
Instrument Range	ppm	2000
Span Gas Value	ppm	1120.7

Quality Assurance

Conditioning Unit Temperature	Units	Run 1
Average Temperature	°C	N/A
Allowable Temperature	< °C	N/A
Temperature Acceptable	-	N/A

Zero Drift	Units	Run 1	
CAL 1	Zero at Analyser (Pre)	ppm	0.00
	Zero at Analyser (Post)	ppm	1.00
	Zero Drift	ppm	1.00
	Zero Drift	%	0.09
	Drift Correction Applied	2-5%	No
	Allowable Zero Drift	± %	5.00
	Zero Drift Acceptable	-	Yes

Span Drift	Units	Run 1	
CAL 1	Span at Analyser (Pre)	ppm	1120.00
	Span at Analyser (Post)	ppm	1119.00
	Span Drift	ppm	-1.00
	Zero Adj. Span Drift	%	0.18
	Drift Correction Applied	2-5%	No
	Allowable Span Drift	± %	5.00
	Span Drift Acceptable	-	Yes

Test Conditions	Units	Run 1
Run Ambient Temperature Range	°C	6

Method Deviations

Nature of Deviation	Run Number
(x = deviation applies to the associated run)	1
There are no deviations associated with the sampling employed.	x

CARBON MONOXIDE: MEASUREMENT UNCERTAINTY CALCULATIONS

Performance characteristics	RUN 1	Units
Limit value	1400.0	mg/m ³ (REF)
Allowable MU	6.0	%
Measured concentration	712.35	mg/m ³ (STP, dry)
Range Used	2000.0	ppm
Range Used [A]	2498.4	mg/m ³
Cal gas conc.	1120.7	ppm
Conversion	1.25	ppm to mg/m ³
MCERTS Range [B]	75.0	mg/m ³
Lower of [A] or [B]	75.0	mg/m ³
Cal gas conc.	1400.0	mg/m ³

Performance characteristics	RUN 1	Units
Response time	28	seconds
Number of readings in measurement	60	-
Repeatability at zero	0.10	% full scale
Repeatability at span level	0.20	% full scale
Deviation from linearity	0.88	% of value
Zero drift	0.09	% full scale
Span drift	-0.18	% full scale
Volume or pressure flow dependence	0.10	% of full scale
Atmospheric pressure dependence	0.22	% of value/kPa
Ambient temperature dependence	-0.20	% full scale/10K
Combined interference	-0.48	% range
Dependence on voltage	-0.35	% full scale/10V
Losses in the line (leak)	0.00	% of value
Uncertainty of calibration gas blending	1.40	% of value
Uncertainty of calibration gas	2.00	% of value

Performance characteristic	RUN 1	Units
Standard deviation of repeatability at zero	use rep at span	mg/m ³
Standard deviation of repeatability at span level	0.03	mg/m ³
Lack of fit	0.38	mg/m ³
Drift	-0.01	mg/m ³
Volume or pressure flow dependence	0.00	mg/m ³
Atmospheric pressure dependence	0.05	mg/m ³
Ambient temperature dependence	-0.03	mg/m ³
Combined interference (from MCERTS Certificate)	-0.21	mg/m ³
Dependence on voltage	-0.04	mg/m ³
Losses in the line (leak)	0.00	mg/m ³
Uncertainty of calibration gas blending	5.76	mg/m ³
Uncertainty of calibration gas	8.23	mg/m ³

Measurement uncertainty	Result	RUN 1	Units
Combined uncertainty		712.35	mg/m ³
Expanded uncertainty	k = 1.96	10.05	mg/m ³
Expanded uncertainty		19.70	mg/m ³
Uncertainty corrected to std conds. (O ₂)		21.75	mg/m ³ (REF)

	RUN 1	Units
Expanded uncertainty (no O ₂) - at 95% Confidence	2.77	% of Value
Expanded uncertainty (no O ₂) - at 95% Confidence	1.41	% at ELV
Overall Allowable uncertainty (no O ₂) - at 95% Confidence	6.0	% at ELV
Result of Compliance with Uncertainty Requirement	N/A	-

	RUN 1	Units
Expanded uncertainty (with O ₂) - at 95% Confidence	7.60	% of Value
Expanded uncertainty (with O ₂) - at 95% Confidence	7.25	% at ELV
Overall Allowable uncertainty (with O ₂) - at 95% Confidence	9.3	% at ELV
Result of Compliance with Uncertainty Requirement	COMPLIANT	-

Requirement for SRM is that Uncertainty should be <6% of the value at the ELV, on a dry gas basis, or if O₂ correction is applied less than 6% + the uncertainty associated with the O₂ correction (using sqrt of sum squares to add uncertainty components).

OXYGEN: RESULTS SUMMARY

Glannmiheli AD Facility, Powys
Engine 1

Sample Runs

Parameter	Units	Run 1	Mean
Concentration	% v/v	6.51	6.51
Uncertainty	±% v/v	0.46	0.46

General Sampling Information

Parameter	Value
Standard	EN 14789
Technical Procedure	MD 039
Probe Material	Stainless Steel
Filtration Type / Size	0.1µm Glass Fibre
Heated Head Filter Used	Yes
Heated Line Temperature	180°C
Span Gas Type	Synthetic Air (5 Grade)
Span Gas Reference Number	CLY 11.0685
Span Gas Expiry Date	30/01/2030
Span Gas Start Pressure (bar)	10
Gas Cylinder Concentration (% v/v)	21.47
Span Gas Uncertainty (%)	2
Zero Gas Type	Nitrogen (5 Grade)
Number of Sampling Lines Used	1 / 1
Number of Sampling Points Used	1 / 1
Sample Point I.D.'s	A1

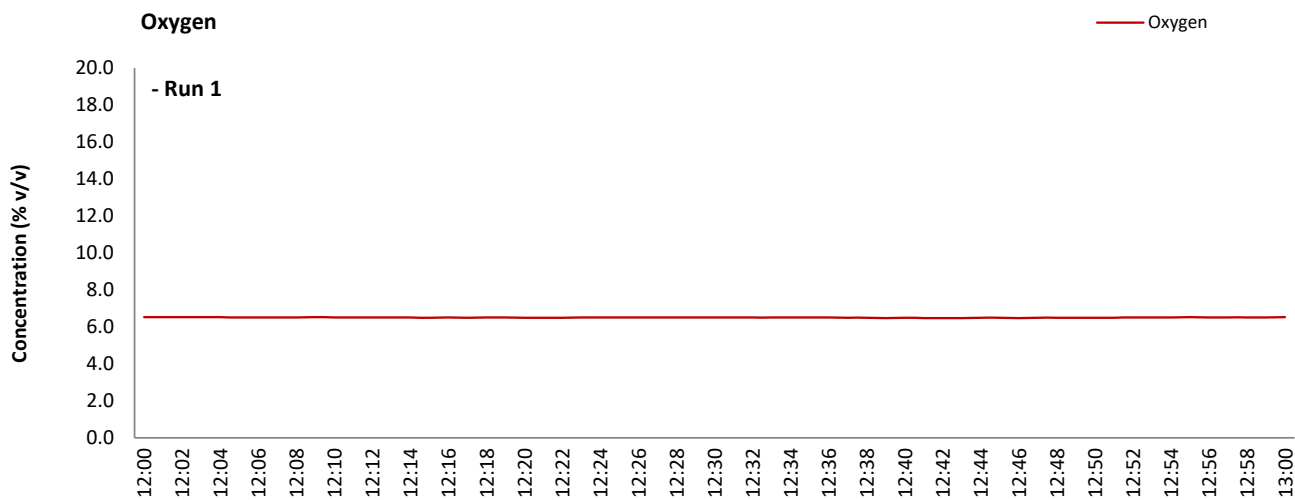
NOTE: Dilution performed to achieve correct span value

FORMAT: Number Used / Number Required

FORMAT: Number Used / Number Required

OXYGEN: DATA TREND

Graphical Trend of Data



OXYGEN: SAMPLING DETAILS & QUALITY ASSURANCE

Sampling Details

Parameter	Units	Run 1
Sampling Times	-	12:00 - 13:00
Sampling Dates	-	03/02/2026
Instrument Range	% v/v	25.0
Span Gas Value	% v/v	8.0

Quality Assurance

Conditioning Unit Temperature	Units	Run 1
Average Temperature	°C	N/A
Allowable Temperature	< °C	N/A
Temperature Acceptable	-	N/A

Zero Drift	Units	Run 1	
CAL 1	Zero at Analyser (Pre)	% v/v	0.00
	Zero at Analyser (Post)	% v/v	0.13
	Zero Drift	% v/v	0.13
	Zero Drift	%	1.62
	Drift Correction Applied	2-5%	No
	Allowable Zero Drift	± %	5.00
	Zero Drift Acceptable	-	Yes

Span Drift	Units	Run 1	
CAL 1	Span at Analyser (Pre)	% v/v	8.01
	Span at Analyser (Post)	% v/v	8.18
	Span Drift	% v/v	0.17
	Zero Adj. Span Drift	%	0.50
	Drift Correction Applied	2-5%	No
	Allowable Span Drift	± %	5.00
	Span Drift Acceptable	-	Yes

Test Conditions	Units	Run 1
Run Ambient Temperature Range	°C	6

Method Deviations

Nature of Deviation	Run Number
(x = deviation applies to the associated run)	1
There are no deviations associated with the sampling employed.	x

OXYGEN: MEASUREMENT UNCERTAINTY CALCULATIONS

Performance characteristics	RUN 1	Units
Limit value	N/A	%vol
Allowable MU	6.0	%
Measured concentration	6.51	%vol
Range Used	25.0	%vol
Cal gas conc.	21.5	%vol

Performance characteristics	RUN 1	Units
Response time	41	seconds
Number of readings in measurement	60	-
Repeatability at zero	0.02	% full scale
Repeatability at span level	0.02	% full scale
Deviation from linearity	0.09	% of value
Zero drift	1.62	% full scale
Span drift	0.50	% full scale
Volume or pressure flow dependence	0.10	% of full scale
Atmospheric pressure dependence	0.19	% of value/kPa
Ambient temperature dependence	-0.21	% full scale/10K
Combined interference	0.00	% range
Dependence on voltage	0.02	% full scale/10V
Losses in the line (leak)	0.00	% of value
Uncertainty of calibration gas	2.00	% of value

Performance characteristic	RUN 1	Units
Standard deviation of repeatability at zero	use rep at span	%vol
Standard deviation of repeatability at span level	0.00	%vol
Lack of fit	0.01	%vol
Drift	0.22	%vol
Volume or pressure flow dependence	0.00	%vol
Atmospheric pressure dependence	0.01	%vol
Ambient temperature dependence	-0.03	%vol
Combined interference (from MCERTS Certificate)	0.00	%vol
Dependence on voltage	0.00	%vol
Losses in the line (leak)	0.00	%vol
Uncertainty of calibration gas	0.08	%vol

Measurement uncertainty	Result	RUN 1	Units
Combined uncertainty		6.51	%vol
Expanded uncertainty	k = 1.96	0.24	%vol
		0.46	%vol

	RUN 1	Units
Expanded uncertainty (no O ₂) - at 95% Confidence	7.08	% of Value
Result of Compliance with Uncertainty Requirement	NON-COMPLIANT	-

Requirement for SRM is that Uncertainty should be 0.3% vol absolute or 6% relative whichever is the lower, on a dry gas basis. Source, EN 14789.

VERSION HISTORY

Version Number	Record of changes made within this version of the document
V1	The original document issued to the client